

How to list BIOS settings – Local or Remote Computer

In this post, I am going to explore PS commands on how to get BIOS settings on a local or remote machine. PS command will work on HP, LENOVO, DELL, TOSHIBA hardware.

Install the module - Open PowerShell as Admin - Run install-module GetBIOS

```
PS C:\Users\Administrator> install-module GetBIOS

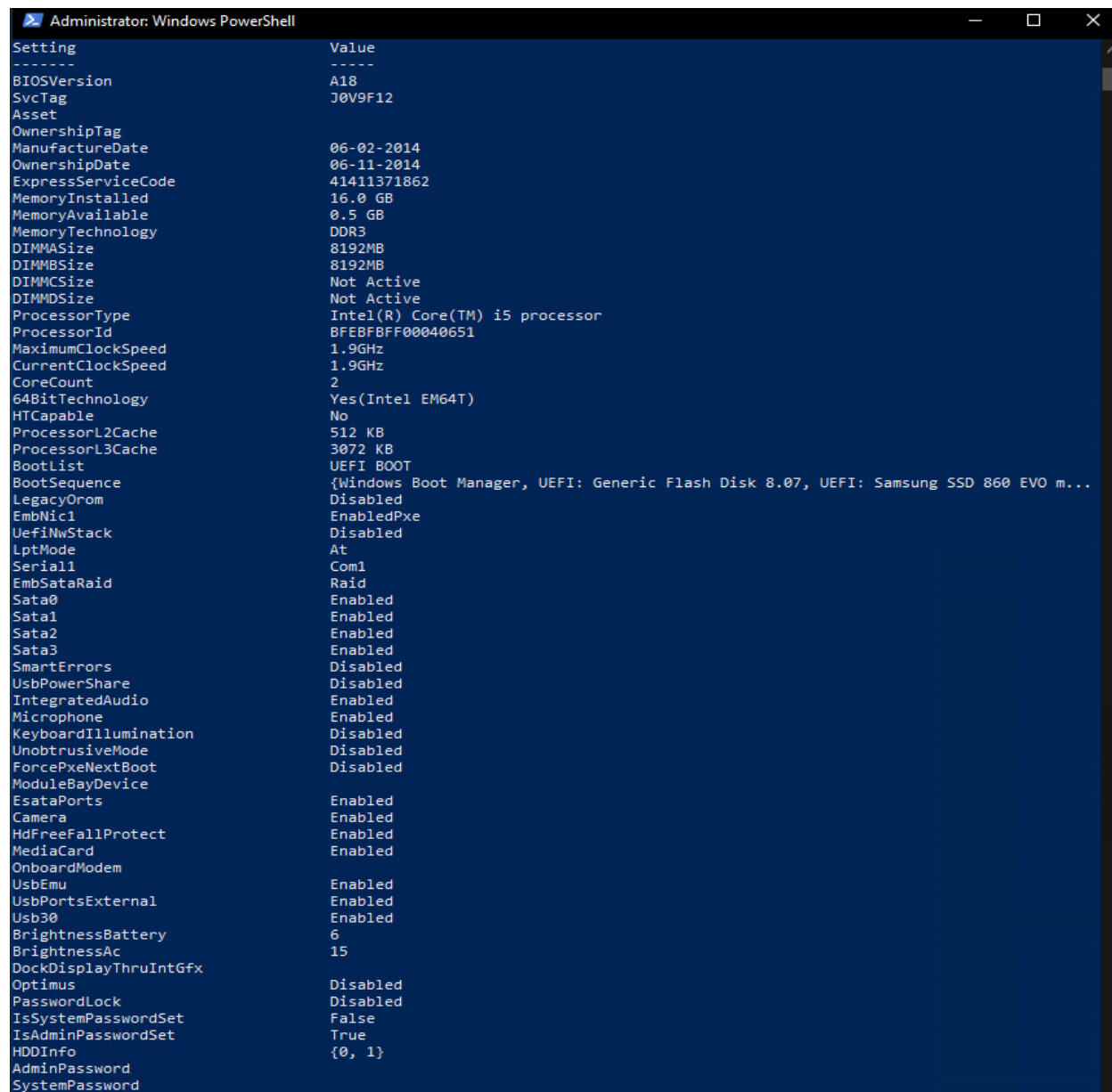
Untrusted repository
You are installing the modules from an untrusted repository. If you trust this repository, change its
InstallationPolicy value by running the Set-PSRepository cmdlet. Are you sure you want to install the modules from
'PSGallery'?
[Y] Yes [A] Yes to All [N] No [L] No to All [S] Suspend [?] Help (default is "N"): A
```

To get BIOS info – type Get-BIOS – did not work because I was using ASUS laptop

```
PS C:\Users\Administrator> Get-BIOS

#####
Your manufacturer is not supported by the module
Supported manufacturer: Dell, HP, Lenovo, Toshiba
#####
```

When I ran same command on Lenovo T430 below are the details



```
Administrator: Windows PowerShell

Setting                Value
-----
BIOSVersion            A18
SvcTag                 J0V9F12
Asset
OwnershipTag
ManufactureDate       06-02-2014
OwnershipDate         06-11-2014
ExpressServiceCode    41411371862
MemoryInstalled       16.0 GB
MemoryAvailable       0.5 GB
MemoryTechnology      DDR3
DIMMSize              8192MB
DIMMBSize             8192MB
DIMMCSize             Not Active
DIMMDSize             Not Active
ProcessorType         Intel(R) Core(TM) i5 processor
ProcessorId           BFEBFBFF00040651
MaximumClockSpeed     1.9GHz
CurrentClockSpeed    1.9GHz
CoreCount             2
64BitTechnology      Yes(Intel EM64T)
HTCapable             No
ProcessorL2Cache     512 KB
ProcessorL3Cache     3072 KB
BootList              UEFI_BOOT
BootSequence          {Windows Boot Manager, UEFI: Generic Flash Disk 8.07, UEFI: Samsung SSD 860 EVO m...
LegacyOrom            Disabled
EmbNict1              EnabledPxe
UefiNwStack           Disabled
LptMode               At
Serial1               Com1
EmbSataRaid           Raid
Sata0                 Enabled
Sata1                 Enabled
Sata2                 Enabled
Sata3                 Enabled
SmartErrors           Disabled
UsbPowerShare         Disabled
IntegratedAudio       Enabled
Microphone            Enabled
KeyboardIllumination Disabled
UnobtrusiveMode       Disabled
ForcePxeNextBoot     Disabled
ModuleBayDevice
EsataPorts            Enabled
Camera                Enabled
HdFreeFallProtect     Enabled
MediaCard             Enabled
OnboardModem
UsbEmu                Enabled
UsbPortsExternal      Enabled
Usb30                 Enabled
BrightnessBattery     6
BrightnessAc          15
DockDisplayThruIntGfx
Optimus
PasswordLock          Disabled
IsSystemPasswordSet   False
IsAdminPasswordSet    True
HDDInfo               {0, 1}
AdminPassword
SystemPassword
```

```

Administrator: Windows PowerShell
HDDPassword Disabled
StrongPassword Disabled
PasswordBypass Disabled
OromKeyboardAccess Enabled
CpuXdSupport Enabled
AdminSetupLockout Disabled
WirelessSwitchChanges Disabled
Computrace
TpmSecurity Enabled
TpmActivation Enabled
TpmPpiAcpi Enabled
TpmPpiPci Disabled
TpmPpiDpo Disabled
SecureBoot Enabled
MultiCoreSupport CoresAll
InstTimer 30
Speedstep Enabled
CStatesCtrl Enabled
TurboMode Enabled
LogicProc Enabled
AutoOn Disabled
AutoOnHr 0
AutoOnMn 0
PeakShiftCfg Disabled
PeakShiftBatteryThreshold 15
PeakShiftDayConfiguration {Monday, Tuesday, Wednesday, Thursday...}
AdvBatteryChargeCfg Disabled
AdvancedBatteryChargeConfiguration {Monday, Tuesday, Wednesday, Thursday...}
UsbWake Disabled
WakeOnAc Disabled
WlanAutoSense Enabled
WwanAutoSense Enabled
WakeOnLan LanOnly
BlockSleep Disabled
PrimaryBattChargeCfg Adaptive
CustomChargeStart 50
CustomChargeStop 90
SliceBattChargeCfg Express
Int1SmartConnect Disabled
PowerWarn Enabled
Keypad EnabledByFnKey
PntDevice Touchpad
NumLock Enabled
ExternalHotKey Enabled
RptKeyErr Enabled
Fastboot Minimal
PostMebxKey Enabled
Virtualization Enabled
VtForDirectIo Enabled
TrustExecution Enabled
WirelessSwitchCellularCtrl Enabled
WirelessSwitchWlanOnlyCtrl Enabled
WirelessSwitchBluetoothCtrl Enabled
WirelessSwitchWiGigCtrl Enabled
WirelessWwan Enabled
WirelessLan Enabled
BluetoothDevice Enabled
AllowBiosDowngrade Enabled
ForcedNetworkFlag TBD

```

Grid View – Get-BIOS -showgridview

SGet_BIOS_Settings | out-gridview

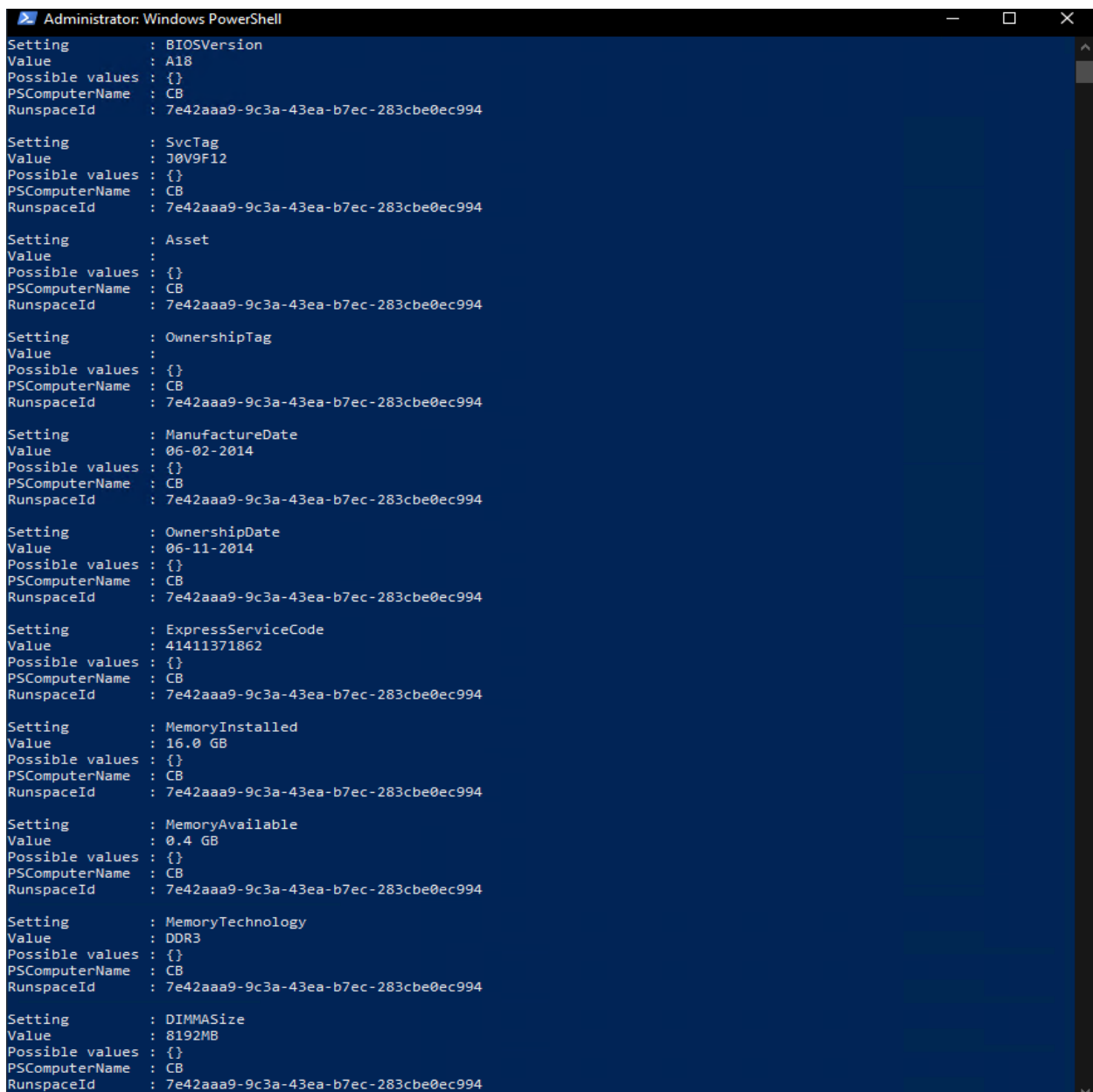
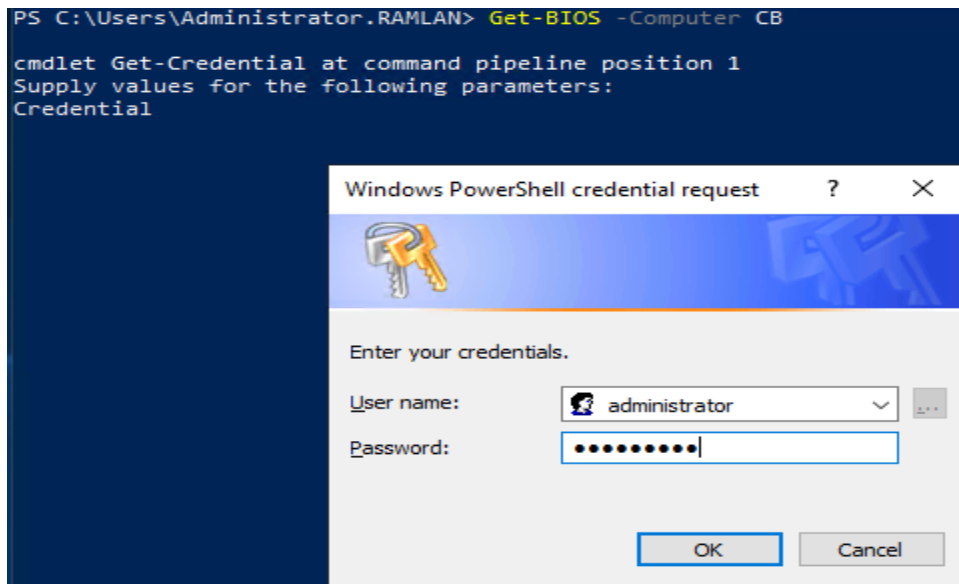
Filter

Add criteria

Setting	Value	Possible values
SvcTag	J0V9F12	0
Asset		0
OwnershipTag		0
ManufactureDate	06-02-2014	0
OwnershipDate	06-11-2014	0
ExpressServiceCode	41411371862	0
MemoryInstalled	16.0 GB	0
MemoryAvailable	0.5 GB	0
MemoryTechnology	DDR3	0
DIMMSize	8192MB	0
DIMMBSize	8192MB	0
DIMMCSize	Not Active	0
DIMMDSize	Not Active	0
ProcessorType	Intel(R) Core(TM) i5 processor	0
ProcessorId	BFE8BF00040651	0
MaximumClockSpeed	1.9GHz	0
CurrentClockSpeed	1.9GHz	0
CoreCount	2	0
64BitTechnology	Yes(Intel EM64T)	0
HTCapable	No	0
ProcessorL2Cache	512 KB	0
ProcessorL3Cache	3072 KB	0
BootList	UEFI BOOT	(Legacy, Uefi)
BootSequence	(Windows Boot Manager, UEFI: Generic Flash Disk 8.07, UEFI: Samsung SSD 860 EVO mSATA 1TB)	
LegacyOrom	Disabled	(Disabled, Enabled)
EmbNic1	EnabledPxe	(Disabled, Enabled, EnabledPxe)
UefiNwStack	Disabled	(Enabled, Disabled)
LptMode	At	(Disabled, At, Ps2, Ecp)
Serial1	Com1	(Disabled, Com1, Com2, Com3...)
EmbSataRaid	Raid	(Disabled, Ahci, Raid)
Sata0	Enabled	(Enabled, Disabled)
Sata1	Enabled	(Enabled, Disabled)
Sata2	Enabled	(Enabled, Disabled)
Sata3	Enabled	(Enabled, Disabled)
SmartErrors	Disabled	(Enabled, Disabled)
UsbPowerShare	Disabled	(Disabled, Enabled)
IntegratedAudio	Enabled	(Enabled, Disabled, Auto)
Microphone	Enabled	(Enabled, Disabled)

To get BIOS info remote computer

Get-BIOS -Computer "CB"



```
PS C:\Users\Administrator.RAMLAN> Get-BIOS -Computer CB -showgridview

cmdlet Get-Credential at command pipeline position 1
Supply values for the following parameters:
Credential
```

Setting	Value	Possible values	PSComputerName
AdvancedBatteryChargeC...	(Monday, Tuesday, Wednesday, Thursday...)		CB
UsbWake	Disabled	(Disabled, Enabled)	CB
WakeOnAc	Disabled	(Disabled, Enabled)	CB
WlanAutoSense	Enabled	(Enabled, Disabled)	CB
WwanAutoSense	Enabled	(Enabled, Disabled)	CB
WakeOnLan	LanOnly	(LanOnly, Disabled, WlanOnly, LanWlan)	CB
BlockSleep	Disabled	(Enabled, Disabled)	CB
PrimaryBattChargeCfg	Adaptive	(Adaptive, Standard, Express, PrimAcUse...)	CB
CustomChargeStart	50	(50-95)	CB
CustomChargeStop	90	(55-100)	CB
SliceBattChargeCfg	Express	(Standard, Express)	CB
InttSmartConnect	Disabled	(Enabled, Disabled)	CB
PowerWarn	Enabled	(Enabled, Disabled)	CB
Keypad	EnabledByFnKey	(EnabledByNumLock, EnabledByFnKey)	CB
PntDevice	Touchpad	(SerialMouse, Ps2Mouse, Touchpad)	CB
NumLock	Enabled	(Enabled, Disabled)	CB
ExternalHotKey	Enabled	(Enabled, Disabled)	CB
RptKeyErr	Enabled	(Enabled, Disabled)	CB
Fastboot	Minimal	(Minimal, Thorough, Auto)	CB
PostMebxKey	Enabled	(Disabled, Enabled)	CB
Virtualization	Enabled	(Enabled, Disabled)	CB
VtForDirectlo	Enabled	(Enabled, Disabled)	CB
TrustExecution	Enabled	(Enabled, Disabled)	CB
WirelessSwitchCellularCtrl	Enabled	(Enabled, Disabled)	CB
WirelessSwitchWlanOnlyCtrl	Enabled	(Enabled, Disabled)	CB
WirelessSwitchBluetoothCtrl	Enabled	(Enabled, Disabled)	CB
WirelessSwitchWiGigCtrl	Enabled	(Enabled, Disabled)	CB
WirelessWwan	Enabled	(Enabled, Disabled)	CB
WirelessLan	Enabled	(Enabled, Disabled)	CB
BluetoothDevice	Enabled	(Enabled, Disabled)	CB
AllowBiosDowngrade	Enabled	(Disabled, Enabled)	CB
ForcedNetworkFlag	TBD	()	CB

Pretty useful if you want to upgrade BIOS.

Thanks

Ram
18th June 2023