

How to setup PatchMyPC for Intune

In this post, I am going to install trial version of PatchMyPC for Intune only. They also have same product for Configuration Manager.

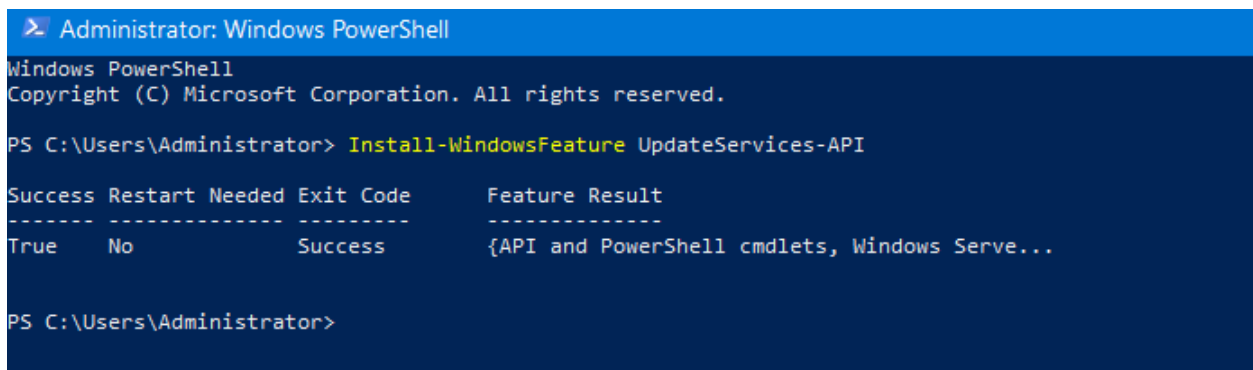
I was able to get 30 days trial license key which will be used during the setup. The setup will be on my Domain Controller running Windows 2019. You can install on Windows Server 2016, 2019,2022 or Windows Workstation 10 or 11.

REQUIREMENTS:

Since, I am running Windows Server 2019, I need to run this command for WSUS API

Open PowerShell as Admin and run this command

Install-WindowsFeature UpdateServices-API



```
Administrator: Windows PowerShell
Windows PowerShell
Copyright (C) Microsoft Corporation. All rights reserved.

PS C:\Users\Administrator> Install-WindowsFeature UpdateServices-API

Success Restart Needed Exit Code      Feature Result
-----
True      No              Success          {API and PowerShell cmdlets, Windows Serve...

PS C:\Users\Administrator>
```

HARDWARE:

PatchMyPC Publisher is lightweight. Doesn't require lot of memory or hard disk space. The min are

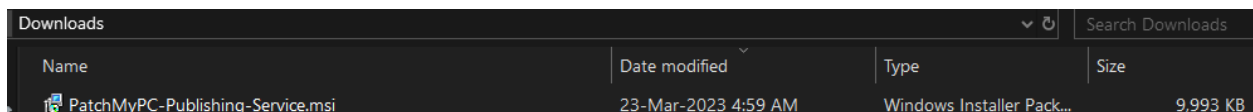
- CPU: 2 CPU or more
- Memory: 8GB of RAM or more
- Disk Space: 80GB of disk space or more
 - The amount of disk space required will depend on the number of selected products.


INSTALLER DOWNLOAD:

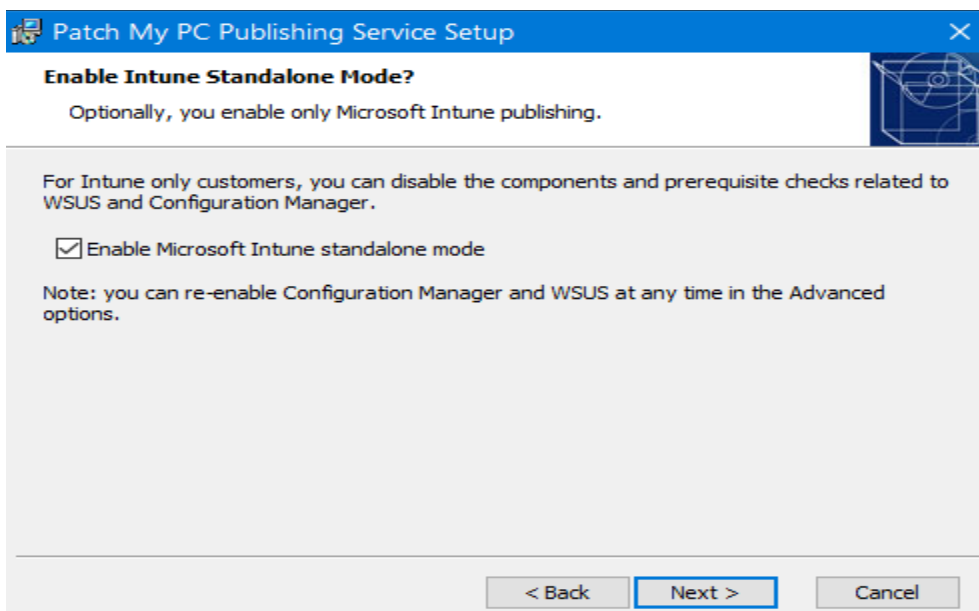
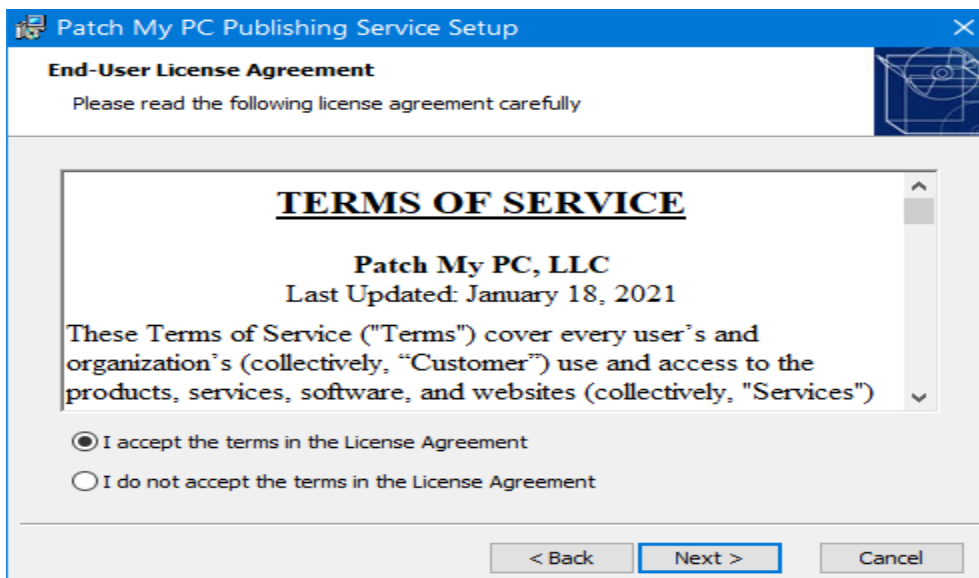
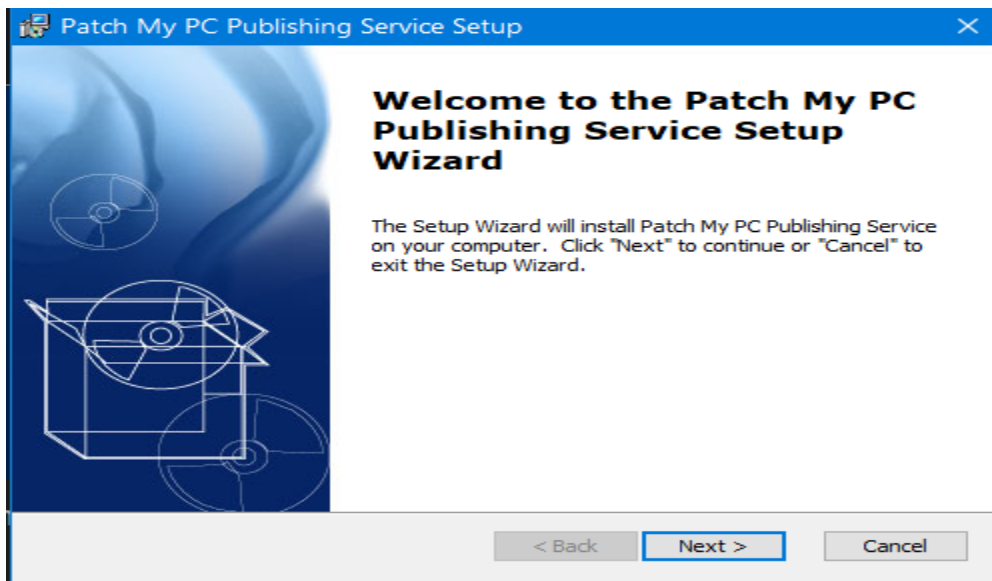
You can download latest version of PatchMyPC Publishing Service from here

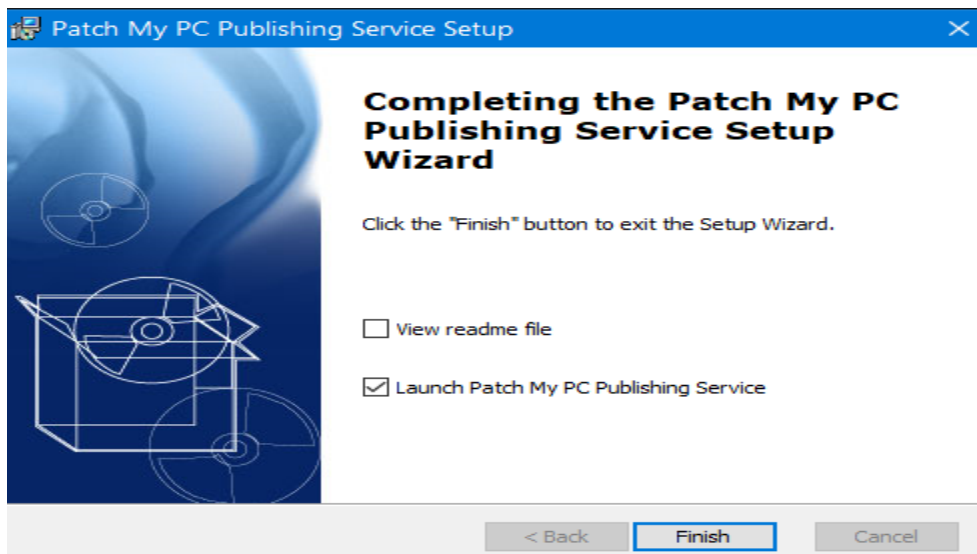
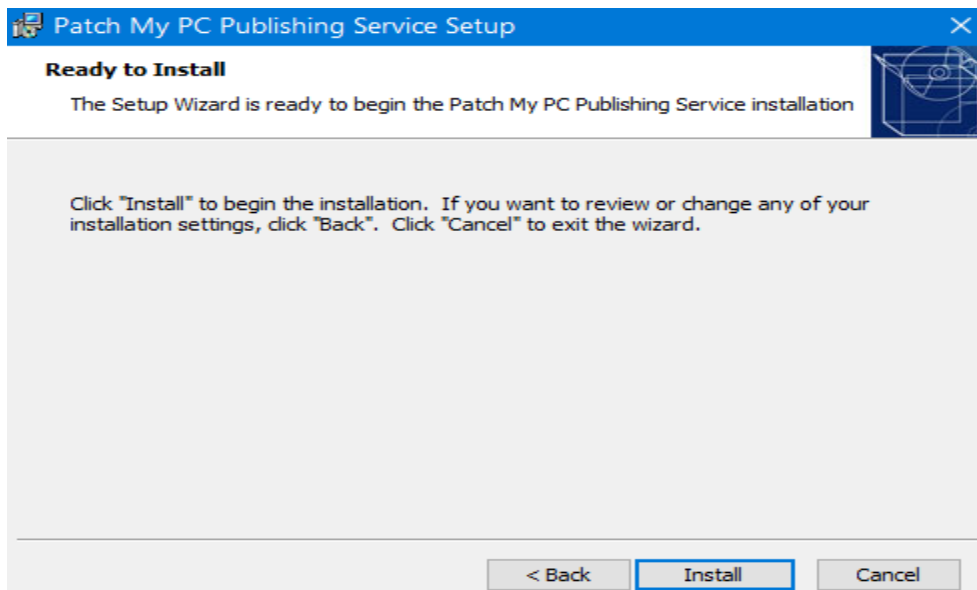
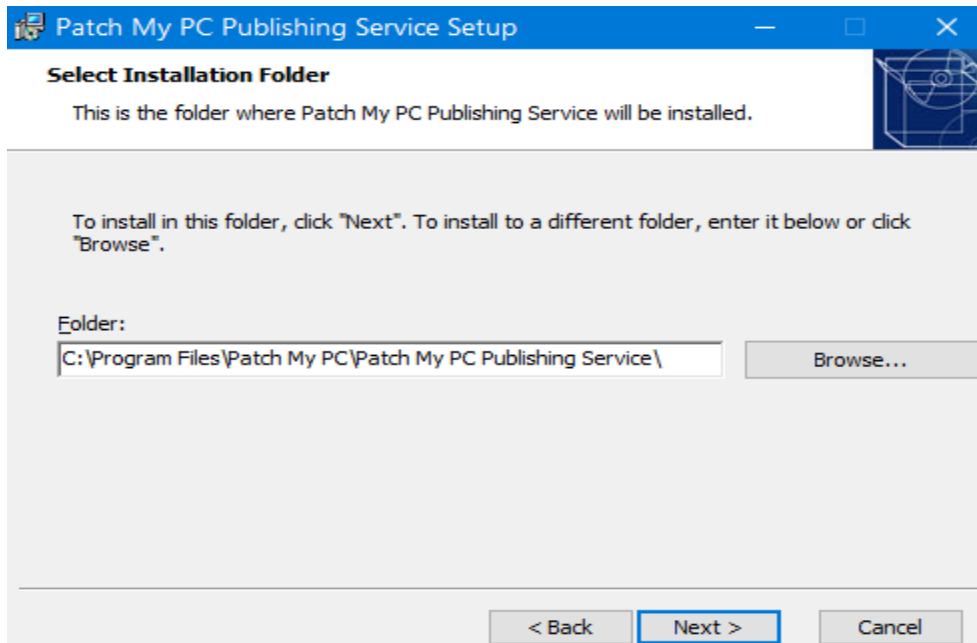
<https://patchmypc.com/scupcatalog/downloads/publishingservice/PatchMyPC-Publishing-Service.msi>

Run the installer and follow the prompts



Name	Date modified	Type	Size
 PatchMyPC-Publishing-Service.msi	23-Mar-2023 4:59 AM	Windows Installer Pack...	9,993 KB





LICENSE KEY:

When you launch PatchMyPC the first task is to complete License key configuration. I have 30 day trial license which, I will use to complete the task.

Patch My PC - Publishing Settings - 2.1.12.0

General Intune Apps Intune Updates Sync Schedule Alerts Advanced About

License Information

License Key: [Redacted] **Validate**

Subscription level:
Expiration date:
Licensed device count:

License status not tested yet.

Usage Statistics

Published applications: Last sync:
Published updates: Next sync:
Published CVEs: Total syncs:

Certificate Management [\(More Info\)](#)

Show Certificate Import PFX Certificate
Export Certificate... Generate a Self-Signed Certificate

The certificate hasn't been tested, because WSUS publishing is disabled.

Logging Options

Logging Level: Information Logs to Retain: 5 Max Size in MB: 3

Open PatchMyPC.log Collect Logs

OK Cancel Apply

Subscription Validation Succeeded

This catalog subscription has been validated.

Licensed To: RAMLAN INC
Expiration: 19-Apr-2023

OK

Patch My PC - Publishing Settings - 2.1.12.0

General | Intune Apps | Intune Updates | Sync Schedule | Alerts | Advanced | About

License Information

License Key: [REDACTED] Subscription level: Enterprise Plus
 Expiration date: 19-Apr-2023 | 27 days
 Licensed device count: 25

Licensed to RAMLAN INC

Usage Statistics

Published applications: 00 Last sync:
 Published updates: 00 Next sync:
 Published CVEs: 00 Total syncs: 00

Certificate Management [\(More Info\)](#)

The certificate hasn't been tested, because WSUS publishing is disabled.

Logging Options

Logging Level: Information Logs to Retain: 5
 Max Size in MB: 3

AZURE APP REGISTRATION:

Register PatchMyPC in Azure AD – Login to Azure and complete below task

Dashboard > App registrations >

Register an application

* Name

The user-facing display name for this application (this can be changed later).

PatchMyPC-Intune Connection ✓

Supported account types

Who can use this application or access this API?

- Accounts in this organizational directory only (RAMLAN INC only - Single tenant)
- Accounts in any organizational directory (Any Azure AD directory - Multitenant)
- Accounts in any organizational directory (Any Azure AD directory - Multitenant) and personal Microsoft accounts (e.g. Skype, Xbox)
- Personal Microsoft accounts only

Help me choose...

Redirect URI (optional)

We'll return the authentication response to this URI after successfully authenticating the user. Providing this now is optional and it can be changed later, but a value is required for most authentication scenarios.

Web e.g. https://example.com/auth ✓

Register an app you're working on here. Integrate gallery apps and other apps from outside your organization by adding from [Enterprise applications](#).

By proceeding, you agree to the [Microsoft Platform Policies](#)

PERMISSION FOR API – Now we will complete permissions

API Permissions -> Add a Permission -> Microsoft Graph -> Application Permissions

Select permissions expand all

DeviceManagementApps.ReadWrite.All ✕

Permission	Admin consent required
DeviceManagementApps (1)	
<input checked="" type="checkbox"/> DeviceManagementApps.ReadWrite.All ⓘ Read and write Microsoft Intune apps	Yes

Select permissions expand all

DeviceManagementConfiguration.Read.All ✕

Permission	Admin consent required
DeviceManagementConfiguration (1)	
<input checked="" type="checkbox"/> DeviceManagementConfiguration.Read.All ⓘ Read Microsoft Intune device configuration and policies	Yes

Select permissions expand all

DeviceManagementManagedDevices.Read.All ✕

Permission	Admin consent required
DeviceManagementManagedDevices (1)	
<input checked="" type="checkbox"/> DeviceManagementManagedDevices.Read.All ⓘ Read Microsoft Intune devices	Yes

Select permissions expand all

DeviceManagementRBAC.Read.All ✕

Permission	Admin consent required
DeviceManagementRBAC (1)	
<input checked="" type="checkbox"/> DeviceManagementRBAC.Read.All ⓘ Read Microsoft Intune RBAC settings	Yes

Select permissions expand all

DeviceManagementServiceConfig.ReadWrite.All ✕


Permission	Admin consent required
DeviceManagementServiceConfig (1)	
<input checked="" type="checkbox"/> DeviceManagementServiceConfig.ReadWrite.All ⓘ Read and write Microsoft Intune configuration	Yes

Select permissions expand all

GroupMember.Read.All ✕

Permission	Admin consent required
GroupMember (1)	
<input checked="" type="checkbox"/> GroupMember.Read.All ⓘ Read all group memberships	Yes

Now we have to grant permission to the above.

+ Add a permission ✓ Grant admin consent for RAMLAN INC 

API / Permissions name	Type	Description	Admin consent requ...	Status
Microsoft Graph (7)				
DeviceManagementApps.ReadW	Application	Read and write Microsoft Intune apps	Yes	⚠ Not granted for RAMLA...
DeviceManagementConfiguratic	Application	Read Microsoft Intune device configuration and policies	Yes	⚠ Not granted for RAMLA...
DeviceManagementManagedDe	Application	Read Microsoft Intune devices	Yes	⚠ Not granted for RAMLA...
DeviceManagementRBAC.Read./	Application	Read Microsoft Intune RBAC settings	Yes	⚠ Not granted for RAMLA...
DeviceManagementServiceConfi	Application	Read and write Microsoft Intune configuration	Yes	⚠ Not granted for RAMLA...
GroupMember.Read.All	Application	Read all group memberships	Yes	⚠ Not granted for RAMLA...
User.Read	Delegated	Sign in and read user profile	No	

+ Add a permission ✓ Grant admin consent for RAMLAN INC

API / Permissions name	Type	Description	Admin consent requ...	Status
Microsoft Graph (7)				
DeviceManagementApps.ReadW	Application	Read and write Microsoft Intune apps	Yes	✅ Granted for RAMLAN INC
DeviceManagementConfiguratic	Application	Read Microsoft Intune device configuration and policies	Yes	✅ Granted for RAMLAN INC
DeviceManagementManagedDe	Application	Read Microsoft Intune devices	Yes	✅ Granted for RAMLAN INC
DeviceManagementRBAC.Read./	Application	Read Microsoft Intune RBAC settings	Yes	✅ Granted for RAMLAN INC
DeviceManagementServiceConfi	Application	Read and write Microsoft Intune configuration	Yes	✅ Granted for RAMLAN INC
GroupMember.Read.All	Application	Read all group memberships	Yes	✅ Granted for RAMLAN INC
User.Read	Delegated	Sign in and read user profile	No	✅ Granted for RAMLAN INC



CLIENT SECRET and APPLICATION ID - Now, we must add a client secret, a string that our app will use to prove its identity when requesting a token.

Dashboard -> App Registration -> PatchMyPC-Intune Connection -> Certificates & Secrets -> New Client Secret

Add a client secret

Description:

Expires:

Description	Expires	Value	Copy	Refresh ID
Publisher Tool	3/22/2024			


Copy the Value for the Client Secret you created. Save this value to a secure location, you will enter the value under Application Secret in the Intune Options of the Publisher.

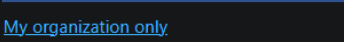
Navigate to the Overview node, and copy the Application (client) ID.

Essentials

Display name : [PatchMyPC-Intune Connection](#) Copied

Application (client) ID : f838d864-230b-429d-ac15-50b177a5ede3

Object ID : 

Directory (tenant) ID : 

Supported account types : [My organization only](#)

Client credentials : [0 certificate, 1 secret](#)

Redirect URIs : [Add a Redirect URI](#)

Application ID URI : [Add an Application ID URI](#)

Managed application in I... : [PatchMyPC-Intune Connection](#)

CONFIGURE PATCHMYPC PUBLISHER TO INTUNE TENANT – Now we will complete this task within PatchMyPC window


Patch My PC - Publishing Settings - 2.1.12.0

General | **Intune Apps** | Intune Updates | Sync Schedule | Alerts | Advanced | About

Enable creation of Win32 applications in Microsoft Intune Options...

Intune Options

Intune Authentication (Azure App Registration) [\(More Info\)](#)


 Friendly Name:

Authority:

Application ID:

Application Secret:

Certificate: Browse... Display Selected Certificate



Test

Intune Win32 Application Options [\(More Info\)](#)

Digitally sign the detection method script and enforce signature checking on the application in Intune.

Select code-signing certificate: Browse... Display Selected Certificate

Update Enrollment Status Page associations with new application when an updated application is created.

Copy the assignments from previously created applications or updates when an updated application is created.

Delete the assignments from previously created applications or updates when an updated application is created.

Update application dependencies from previously created applications when an updated application is created.

Copy the requirements from previously created applications or updates when an updated application is created.

Delete any previously created applications when an updated application is published.

Retain up to previously created applications.

Delete any previously created updates when a new update is published.

Retain up to previously created updates.

Microsoft Graph API Settings







Authentication URL: [Restore to default](#)

Graph base URL: [Restore to default](#)

Ok Cancel

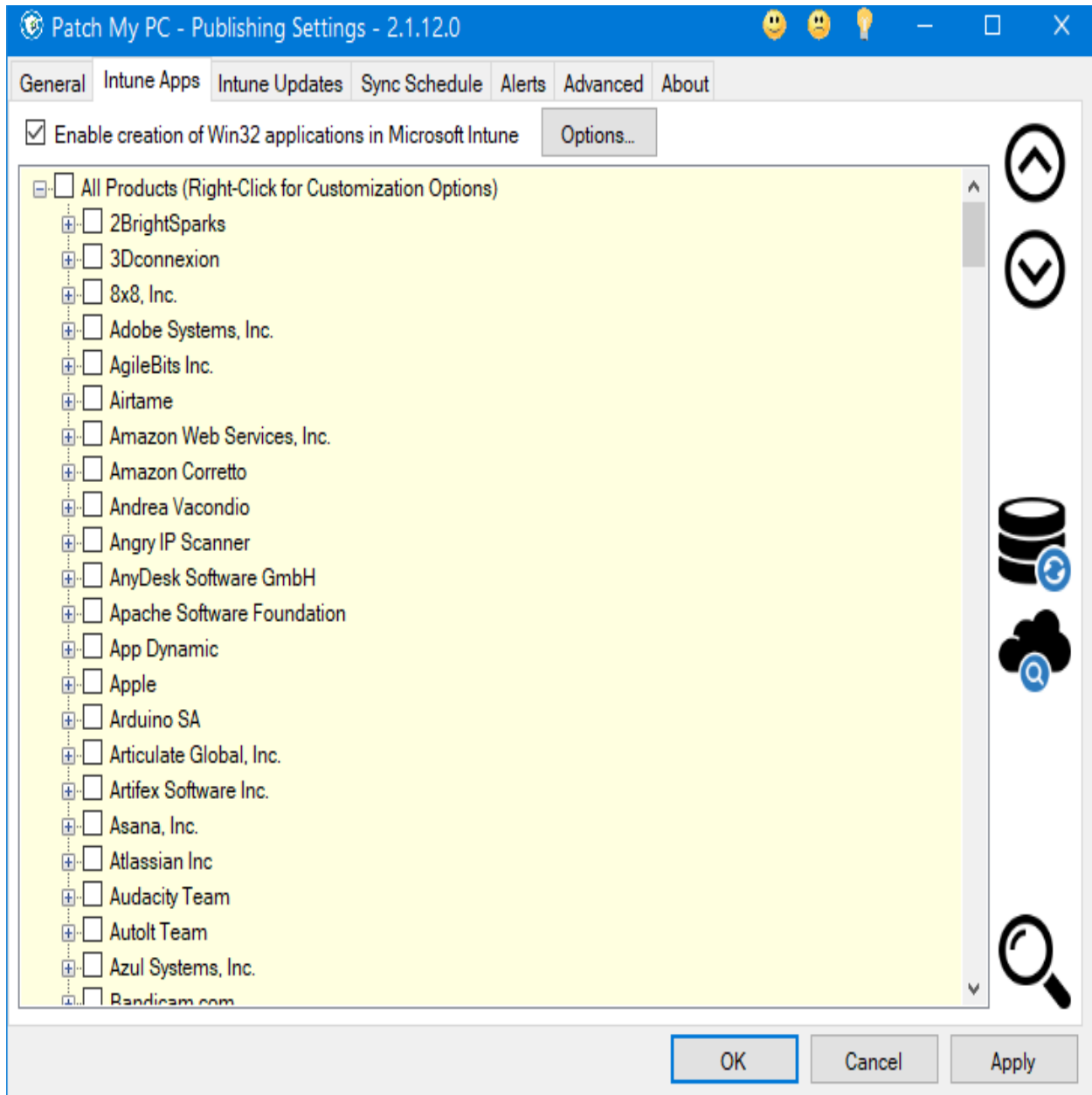
Intune Connection Status

Intune Connection Status [\(More Info\)](#)

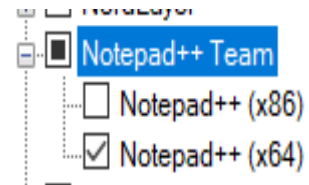
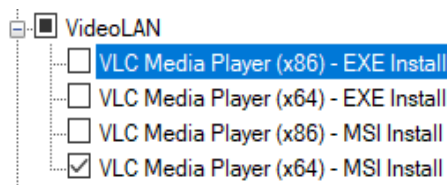
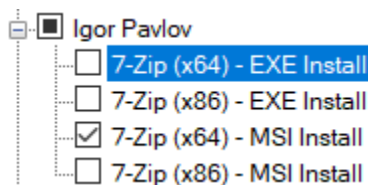
Enabled	Permission	Description
	DeviceManagementApps.ReadWrite.All	View and create applications in Intune
	DeviceManagementConfiguration.Read.All	View properties and relationships of assignment filters
	DeviceManagementManagedDevices.Read.All	View device inventory for the auto-publish feature
	DeviceManagementRBAC.Read.All	View scopes to be assigned to applications
	DeviceManagementServiceConfig.ReadWrite.All	Update Enrollment Status Page configurations
	GroupMember.Read.All	View Azure AD groups to enable automatic application deployment

Close

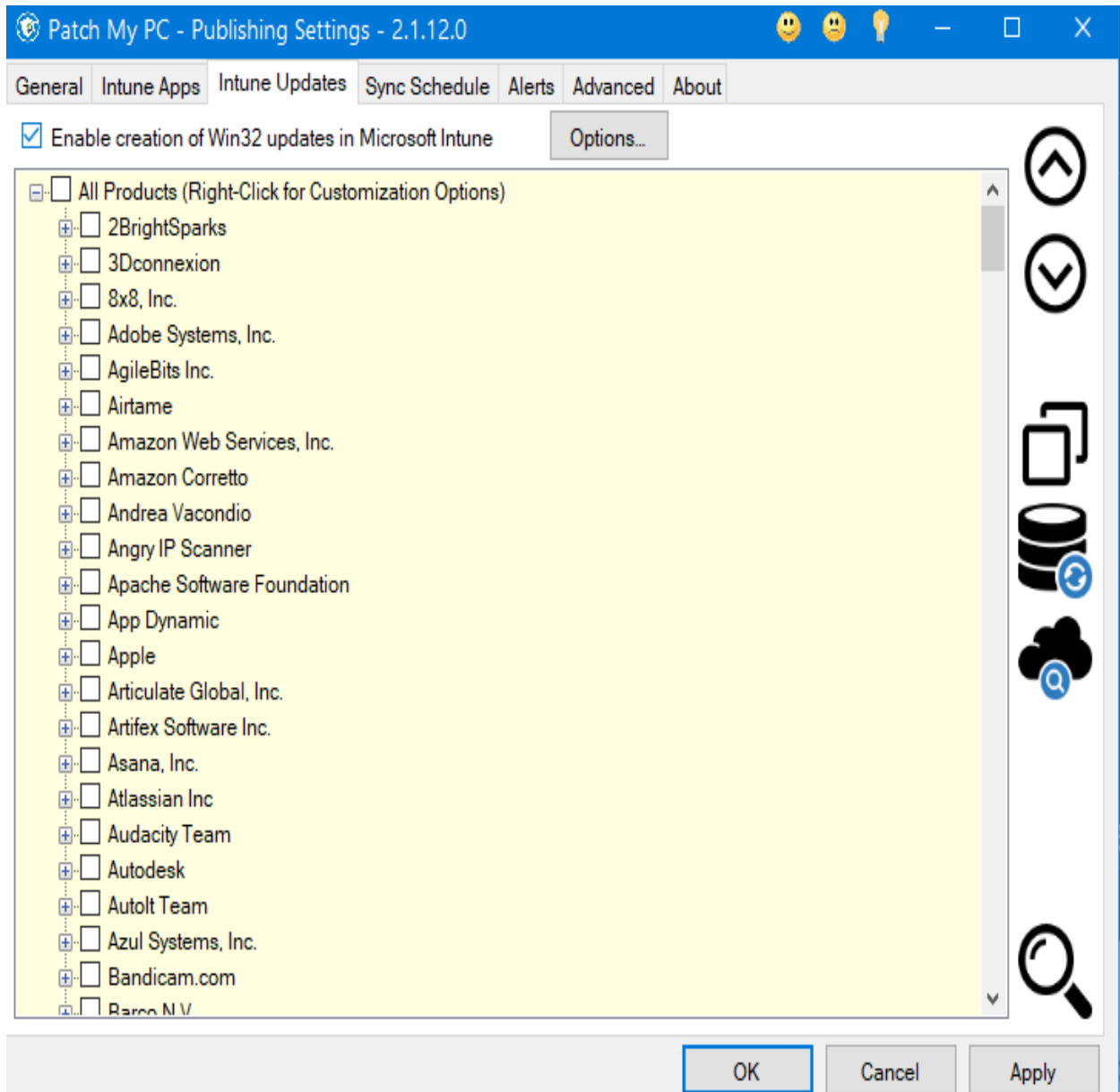
FEATURE ENABLEMENT - To enable products to publish, check the "Enable creation of Win32 applications in Microsoft Intune" checkbox.



Once the option is selected, you'll be able to enable other products. When first getting started with the product, it is recommended that you only choose one or two products to reduce the impact on the first sync and to validate your implementation quickly. We have found that Notepad++ and 7-Zip tend to be great initial use case tests.



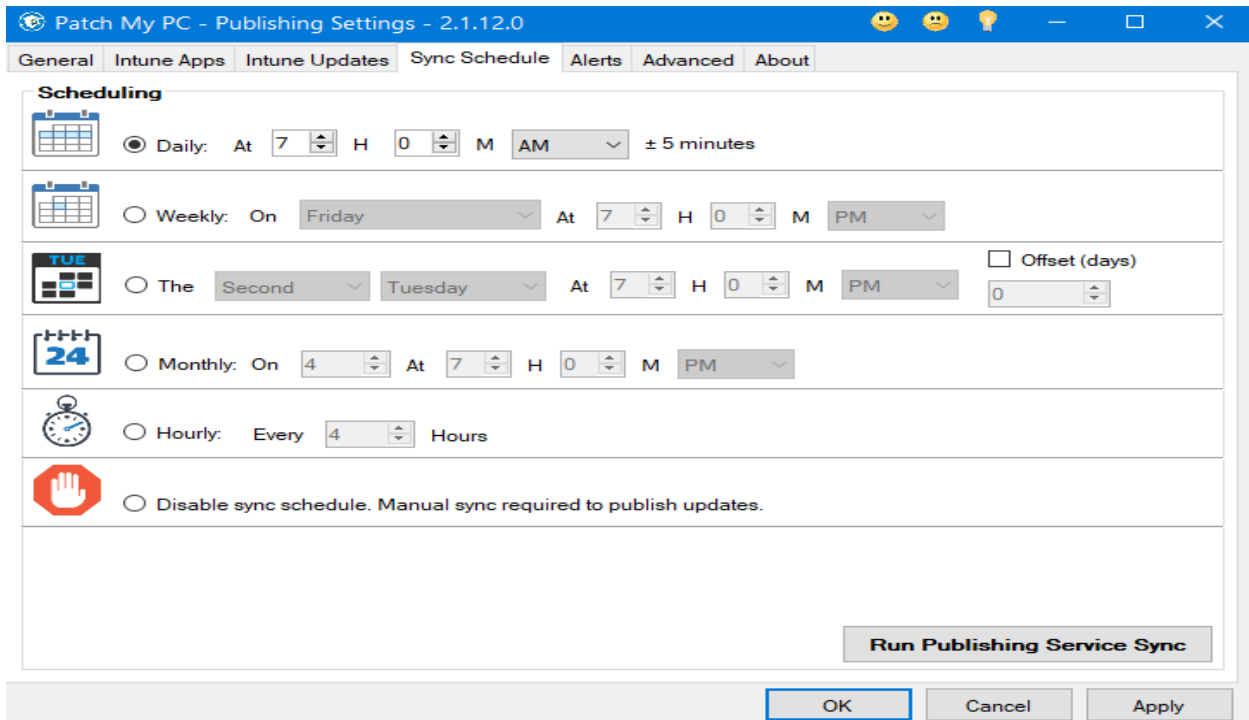
FEATURE ENABLEMENT - To enable products to publish, check the "**Enable creation of Win32 updates in Microsoft Intune**" checkbox.



Once the option is selected, you'll be able to enable other products. When first getting started with the product, it is recommended that you only **choose one or two products** to reduce the impact on the first sync and to validate your implementation quickly. We have found that **Notepad++** and **7-Zip** tend to be great initial use case tests.

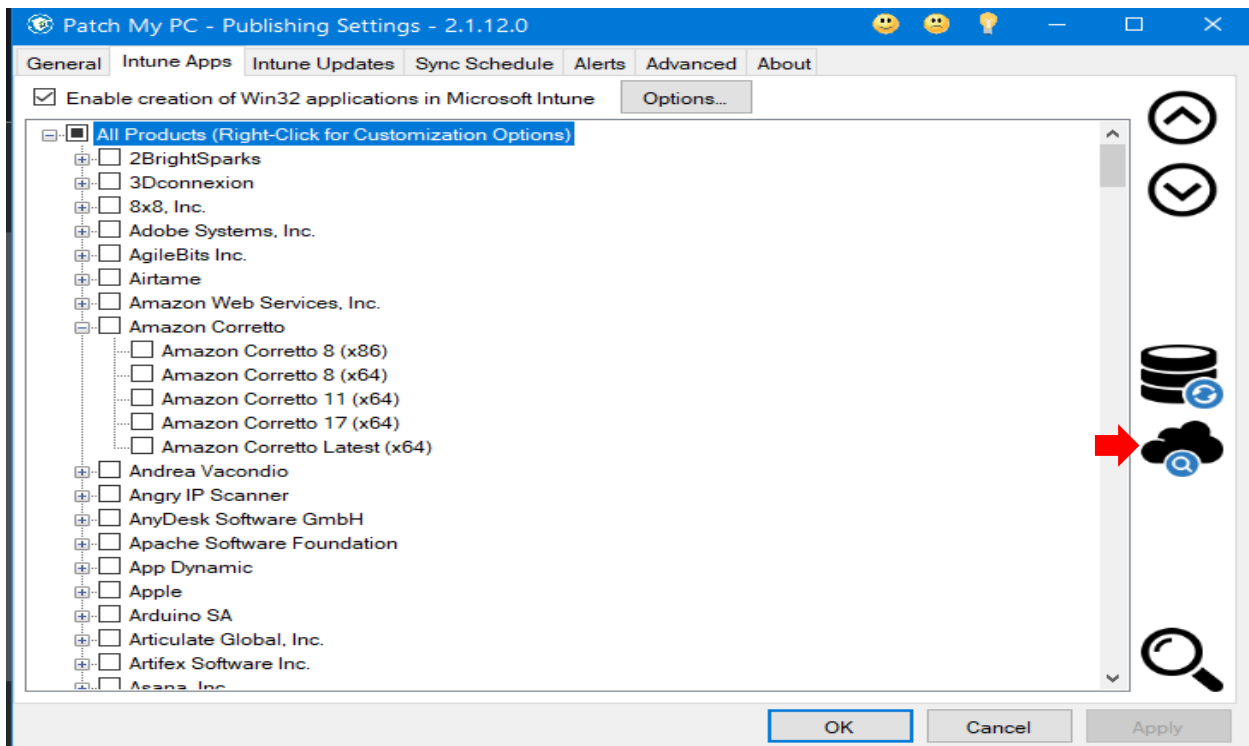


SYNC SCHEDULE - By default, we recommend the Publisher sync runs on a daily basis. The sync schedule only controls **when updates or applications are published** to your environment.



You can also manually start the sync and publication process at any time by selecting the **Run Publishing Service Sync** option.

INTUNE APPLICATION MANAGER – After the sync you can view published apps in Intune. You can also click this icon within PatchMyPC Publisher to get the list. You can do it from Intune Apps or Intune Updates



Intune Application Manager - Intune Lab Testing

Name	Description	Publisher	Modified Date	Assigned	Installed	Install Pending	Not Applicable	Classification	Purpose
7-Zip 22.01 (MSI-...	7-Zip is a free and open-source file archiver, ...	Igor Pavlov	23-Mar-2023 6:2...	<input type="checkbox"/>	0	0	0	Applications	
Notepad++ 8.5.0 ...	Notepad++ is a text editor and source code e...	Notepad++ Team	23-Mar-2023 6:2...	<input type="checkbox"/>	0	0	0	Applications	
Update for 7-Zip ...	UDF support was improved to UDF version 2....	Igor Pavlov	23-Mar-2023 6:2...	<input type="checkbox"/>	0	0	0	Updates	
Update for Notep...	Notepad++ v8.5 bug-fixes and new features: ...	Notepad++ Team	23-Mar-2023 6:2...	<input type="checkbox"/>	0	0	0	Updates	

(More Info) Select All Select None Show Categories Query Published by PatchMyPC Show All Export Delete assignments Delete applications

ALERTS – You can configure alerts for email notification

Patch My PC - Publishing Settings - 2.1.12.0

General Intune Apps Intune Updates Sync Schedule Alerts Advanced About

SMTP Settings (More Info) Common Email Providers: Office 365

Send Email Reports Disable Emails for Manual Syncs

Sender: administrator@ramlan.ca
 Recipients: ram@ramlan.ca
 CC Recipients:
 Server: mail.ramlan.ca

Email Authentication
 Anonymous
 Specified User
 System

Specified User
 Login: ram
 Password:

Use TLS
 Port: 25

Webhook Settings (More Info)
 Enabled

Label

Email Sent Successfully
 A test email has been sent. Please check your inbox.
 OK

OK Cancel Apply

So PatchMyPC deployments is working for Intune devices. Here is the screen shot

Downloads & updates (8 results)

Installed apps (8)

Name	Version	Required by your organization	Publisher	Status
7-Zip 22.01 (MSI-x64)	22.01	Yes	Igor Pavlov	Installed
Admin By Request Workstation	8.0.0.0	Yes	Admin by Request	Installed
Company Portal	Not reported	No	Microsoft Corporation	Installed
FileZilla_3.62.2_win64-setup.exe	3.62.2	Yes	FileZilla	Installed
Notepad++ 8.5.0 (x64)	8.5.0	Yes	Notepad++ Team	Installed
Notepad++ 8.5.1 (x64)	8.5.1	Yes	Notepad++ Team	Installed
W365 O365 M365 (Teams) 20220926_11:08:48	1	Yes	Microsoft	Installed
W365 O365 Microsoft Edge 20220926_11:08:48	1	Yes	Microsoft	Installed

I was checking device status for compliance. This device did not have bit locker ON. So, I had to complete below task to fix the issue.

X

← BitLocker Drive Encryption (C:)

Starting BitLocker

✘ You can't create both a recovery password and a recovery key. Contact your system administrator for more information.

Delete this key from the registry.

Registry Editor

File Edit View Favorites Help

Computer\HKEY_LOCAL_MACHINE\SOFTWARE\Policies\Microsoft\FVE

BitLocker Drive Encryption

Help protect your files and folders from unauthorized access by protecting your drives with BitLocker.

i For your security, some settings are managed by your system administrator.

Operating system drive

C: BitLocker on



- Suspend protection
- Change how drive is unlocked at startup
- Turn off BitLocker

WINDOWS11

THIS DEVICE

Actions

Device status

✔ Can access company resources

This device meets RAMLAN INC compliance and security policies. You can access resources like company email with this device.

Check access

Device information

Original Name
WINDOWS11

Model
VMware7.1

Operating System
Windows

This concludes PatchMyPC for Intune(EndPoint). I will write another blog for Configuration Manager.

Thanks

Ram

1st Apr 2023