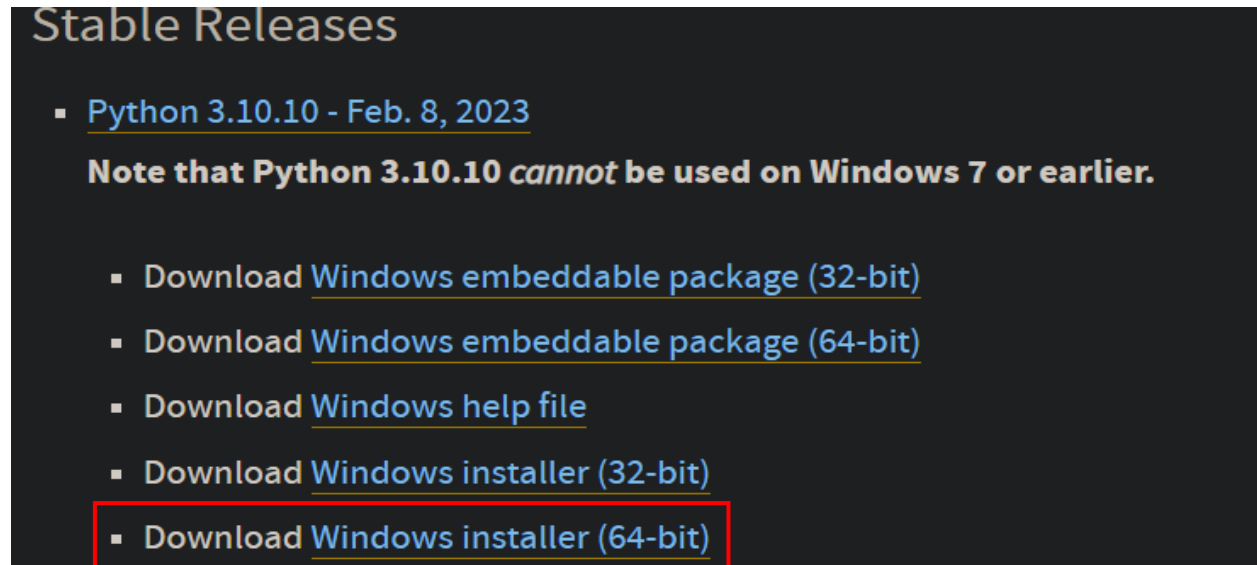


## How to install latest version of Python on Windows 10

In this post, I am going to install latest version of Python on Windows 10 running version 22H2. You can download the file from here <https://www.python.org/downloads/windows/>



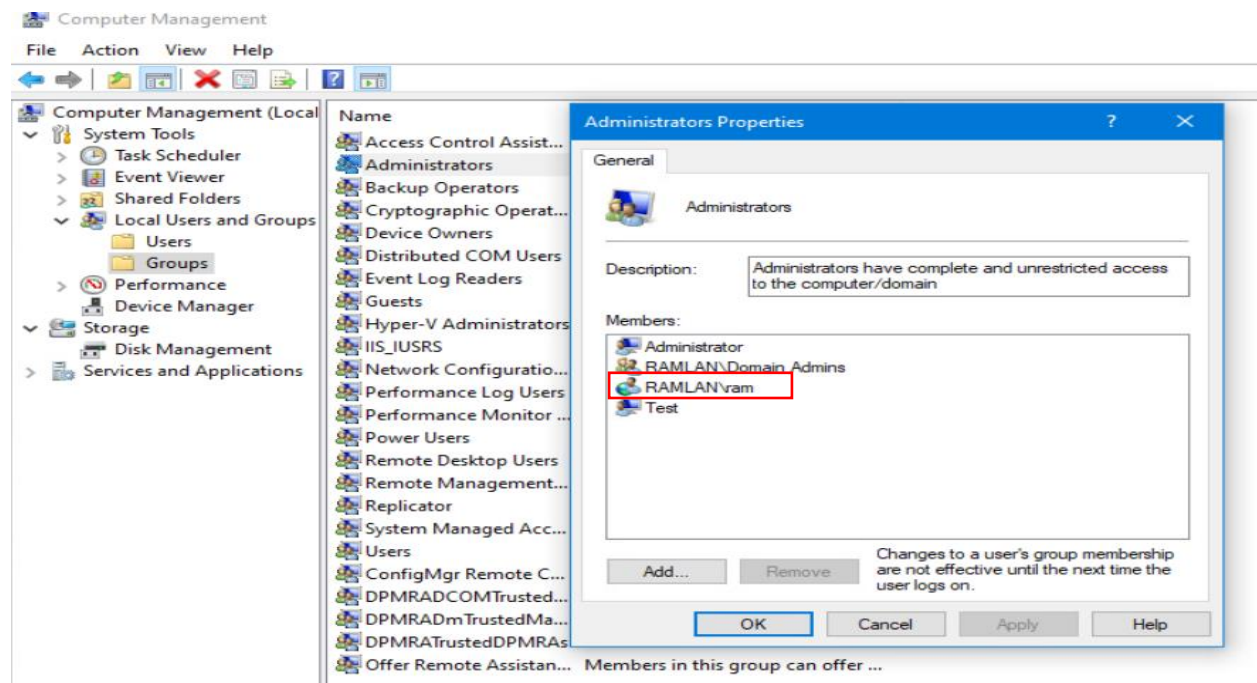
**Stable Releases**

- [Python 3.10.10 - Feb. 8, 2023](#)

**Note that Python 3.10.10 cannot be used on Windows 7 or earlier.**

- [Download Windows embeddable package \(32-bit\)](#)
- [Download Windows embeddable package \(64-bit\)](#)
- [Download Windows help file](#)
- [Download Windows installer \(32-bit\)](#)
- [Download Windows installer \(64-bit\)](#)

Before running the setup, I added user to Local Admin, so we won't have permission issue during the install.



Computer Management

File Action View Help

Computer Management (Local)

- System Tools
  - Task Scheduler
  - Event Viewer
  - Shared Folders
  - Local Users and Groups
    - Users
    - Groups
  - Performance
  - Device Manager
- Storage
  - Disk Management
- Services and Applications

Administrators Properties

General

Administrators

Description: Administrators have complete and unrestricted access to the computer/domain

Members:

- Administrator
- RAMLAN\Domain Admins
- RAMLAN\ram**
- Test

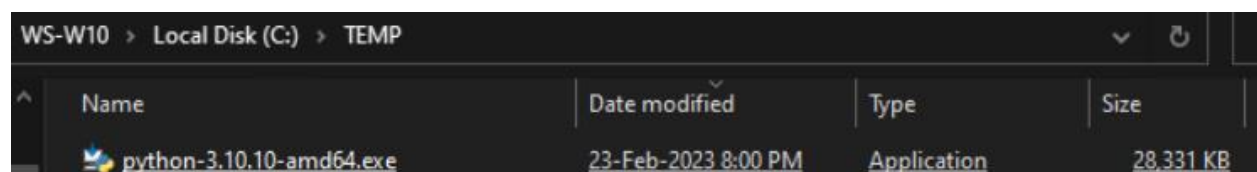
Add... Remove

Changes to a user's group membership are not effective until the next time the user logs on.

OK Cancel Apply Help

Members in this group can offer ...

Here is the setup file. Now time to run the exe

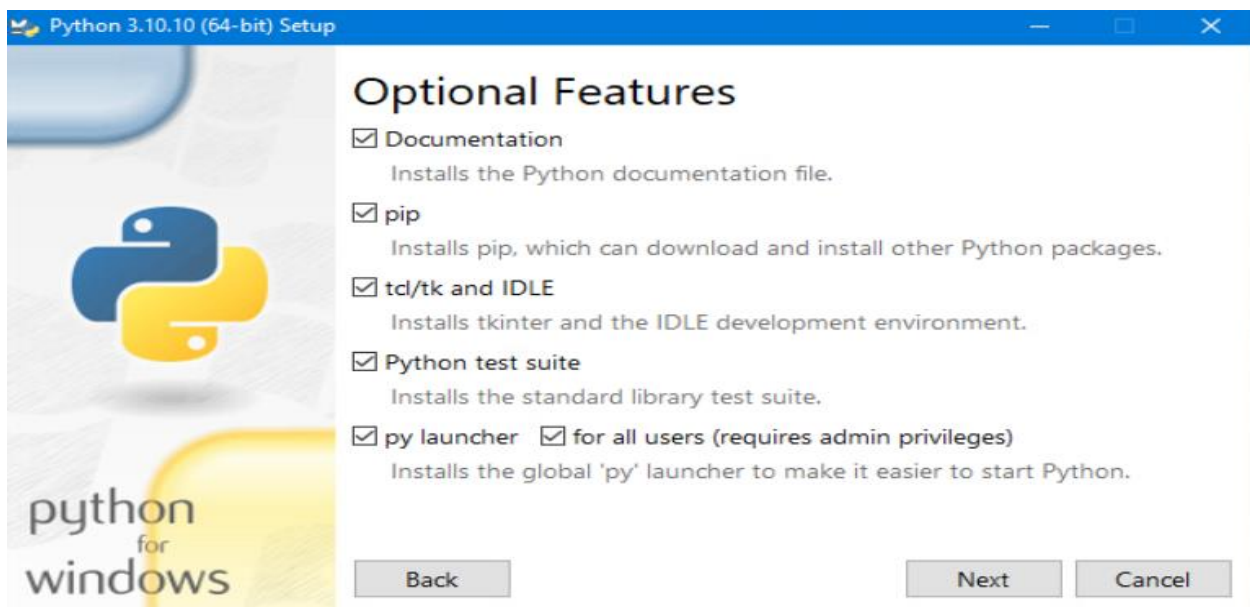


WS-W10 > Local Disk (C:) > TEMP

Name	Date modified	Type	Size
python-3.10.10-amd64.exe	23-Feb-2023 8:00 PM	Application	28,331 KB

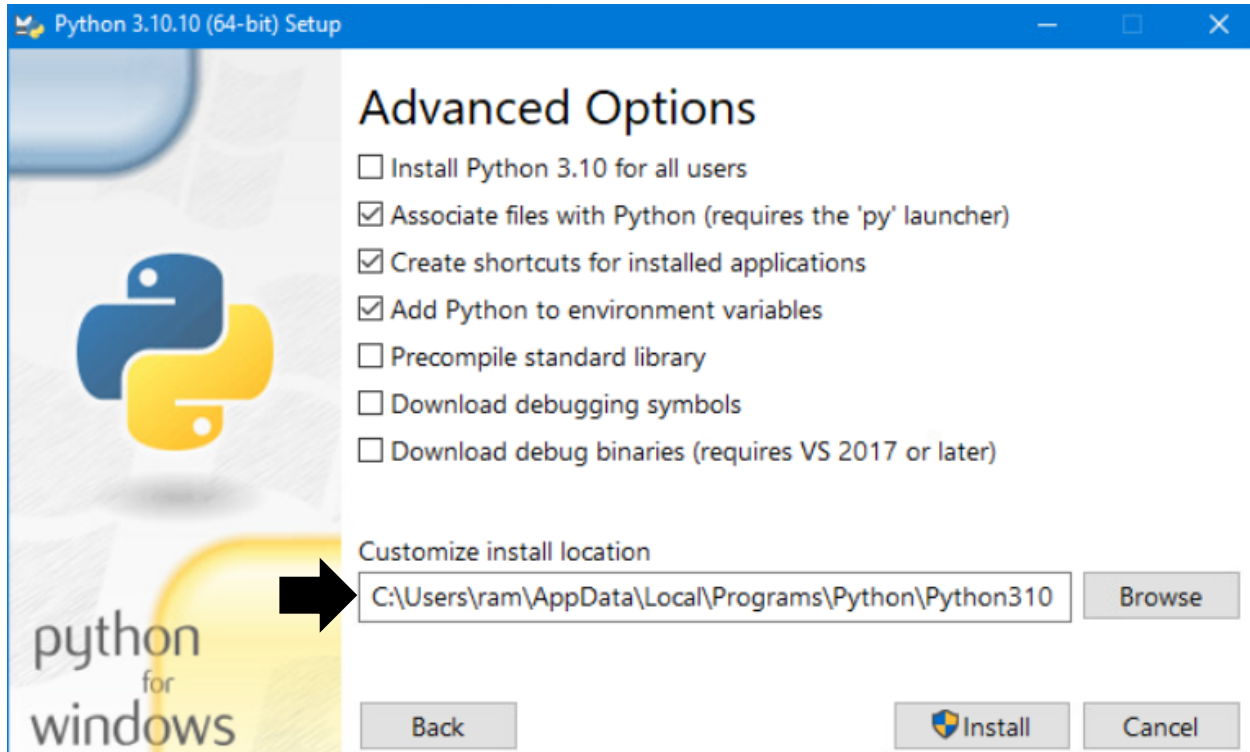


If you want optional features – click Customize installation.

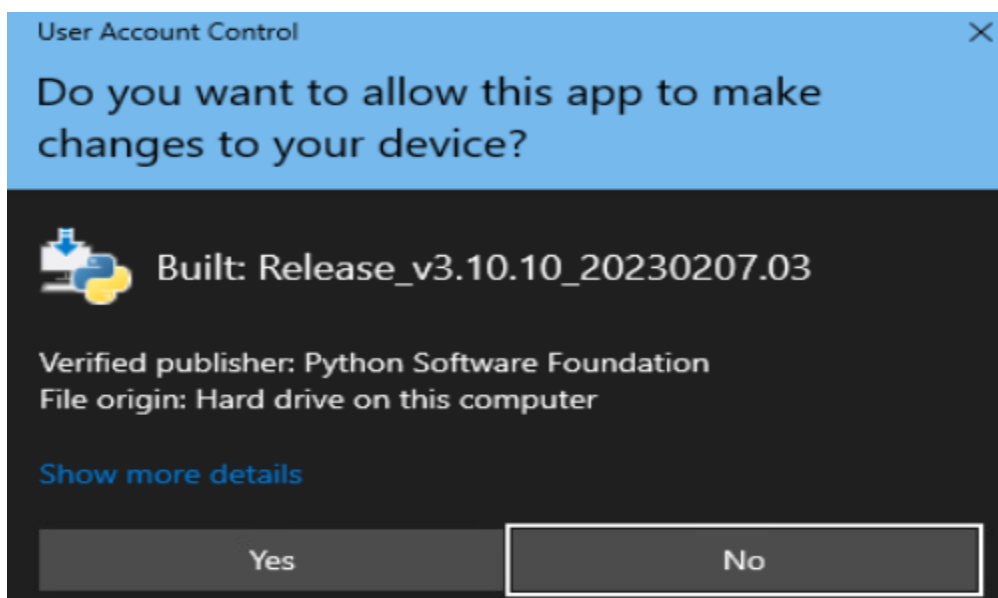


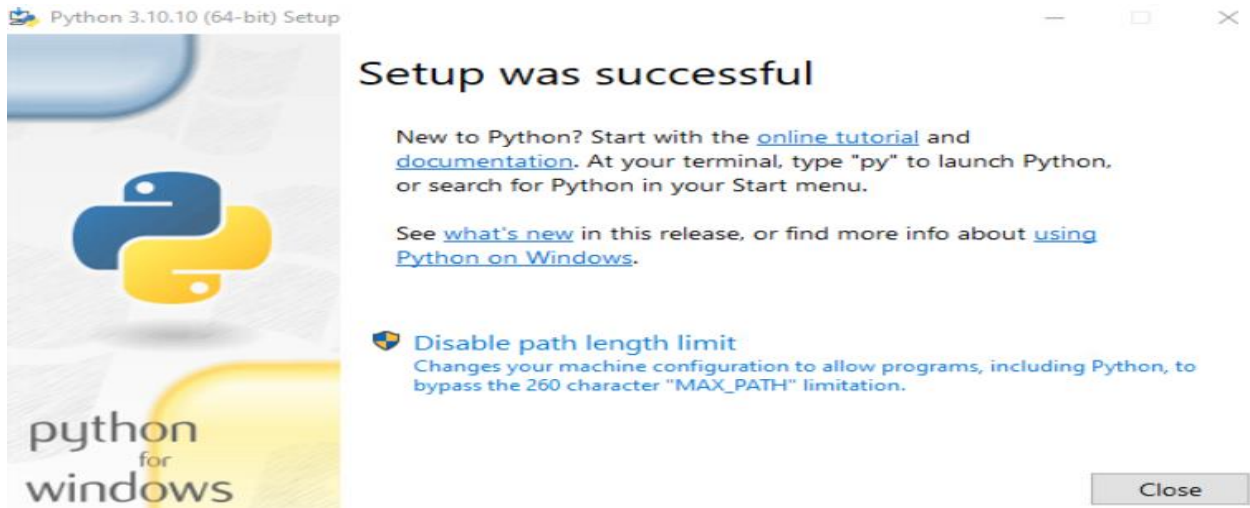
What the optional features are with full description.

- **Documentation:** recommended
- **pip:** recommended if you want to install other Python packages, such as NumPy or pandas
- **tcl/tk and IDLE:** recommended if you plan to use IDLE or follow tutorials that use it
- **Python test suite:** recommended for testing and learning
- **py launcher and for all users:** recommended to enable users to launch Python from the command line

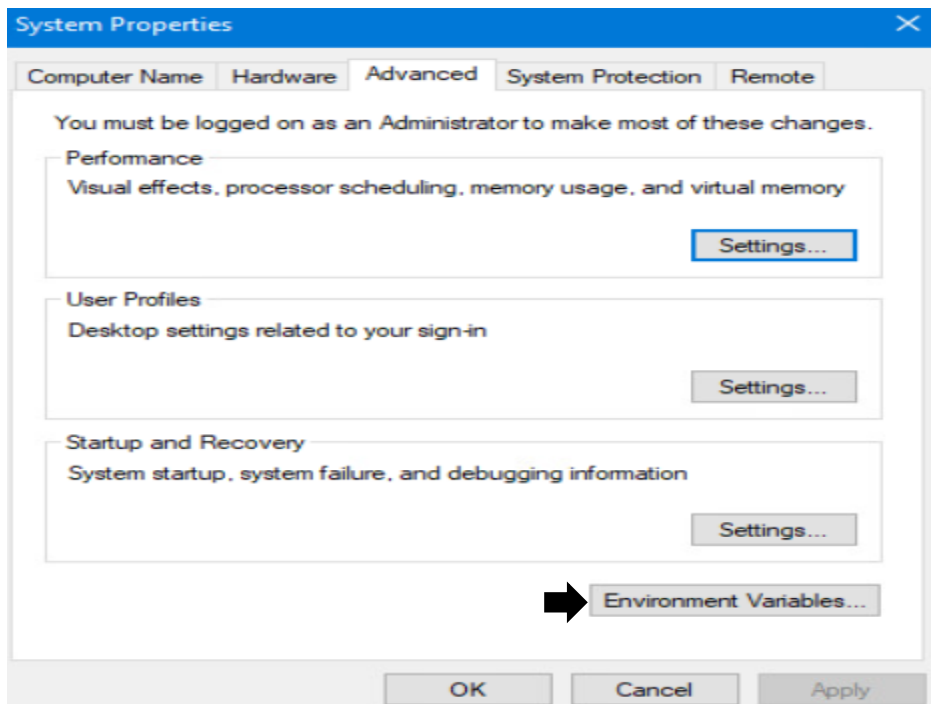
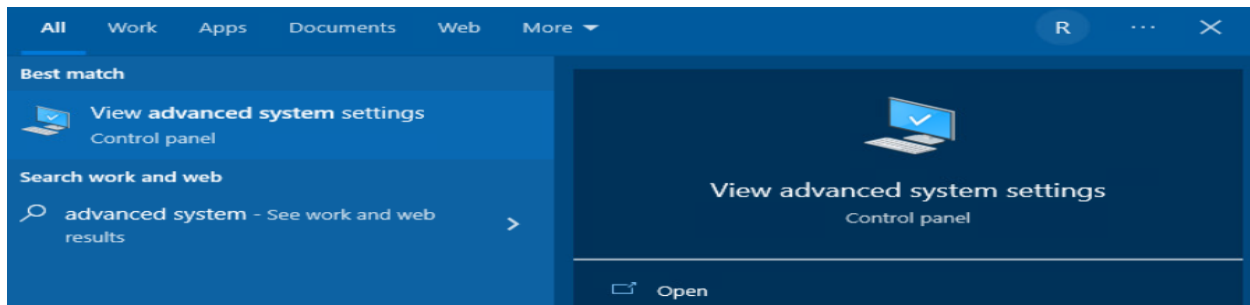


- **Install for all users:** recommended if you're not the only user on this computer
- **Associate files with Python:** recommended, because this option associates all the Python file types with the launcher or editor
- **Create shortcuts for installed applications:** recommended to enable shortcuts for Python applications
- **Add Python to environment variables:** recommended to enable launching Python
- **Precompile standard library:** not required, it might slow down the installation
- **Download debugging symbols** and **Download debug binaries:** recommended only if you plan to create C or C++ extensions





Now let me check whether proper environment variable were created after the install. Click Start → Type Advanced System Settings → Open



- If you selected **Install for all users** during installation, select **Path** from the list of **System Variables** and click **Edit**.
- If you didn't select **Install for all users** during installation, select **Path** from the list of **User Variables** and click **Edit**.

### Environment Variables

User variables for ram

Variable	Value
include	C:\Program Files (x86)\Microsoft Visual Studio\VC98\at\include;C:\...
lib	C:\Program Files (x86)\Microsoft Visual Studio\VC98\mfc\lib;C:\Pro...
MSDevDir	C:\Program Files (x86)\Microsoft Visual Studio\Common\MSDev98
OneDrive	C:\Users\ram\OneDrive - RAMLAN INC
OneDriveCommercial	C:\Users\ram\OneDrive - RAMLAN INC
Path	C:\Users\ram\AppData\Local\Programs\Python\Python310\Scripts...
TEMP	C:\Users\ram\AppData\Local\Temp

System variables

Variable	Value
ComSpec	C:\Windows\system32\cmd.exe
DriverData	C:\Windows\System32\Drivers\DriverData
NUMBER_OF_PROCESSORS	2
OS	Windows_NT
Path	C:\IT\Quickcuts;C:\Windows\system32;C:\Windows;C:\Windows\S...
PATHEXT	.COM;.EXE;.BAT;.CMD;.VBS;.VBE;.JS;.JSE;.WSF;.WSH;.MSC
PROCESSOR_ARCHITECTURE	AMD64

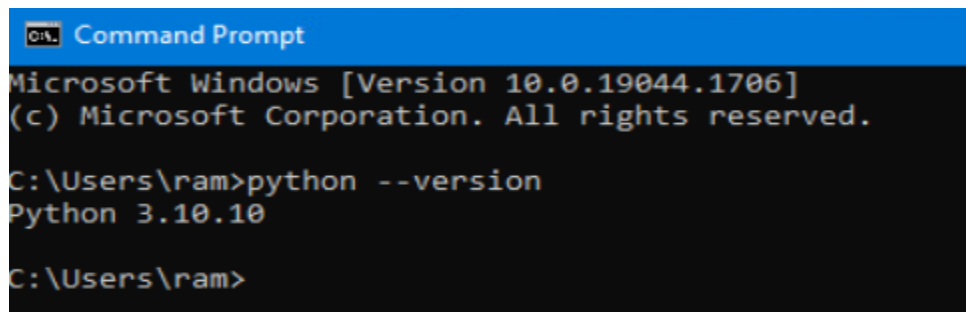
Buttons: New..., Edit..., Delete, OK, Cancel

### Edit environment variable

C:\Users\ram\AppData\Local\Programs\Python\Python310\Scripts\  
 C:\Users\ram\AppData\Local\Programs\Python\Python310\  
 C:\Program Files (x86)\Microsoft Visual Studio\Common\Tools\WinNT  
 C:\Program Files (x86)\Microsoft Visual Studio\Common\MSDev98\Bin  
 C:\Program Files (x86)\Microsoft Visual Studio\Common\Tools  
 C:\Program Files (x86)\Microsoft Visual Studio\VC98\bin  
 %USERPROFILE%\AppData\Local\Microsoft\WindowsApps

Buttons: New, Edit, Browse..., Delete, Move Up, Move Down, Edit text..., OK, Cancel

Now it is time to verify the install. Open Command Prompt

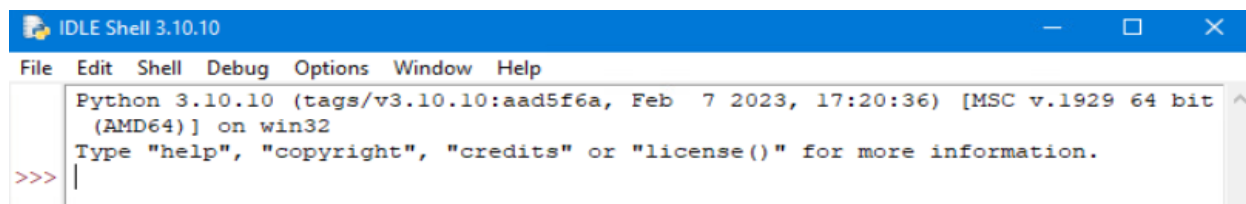
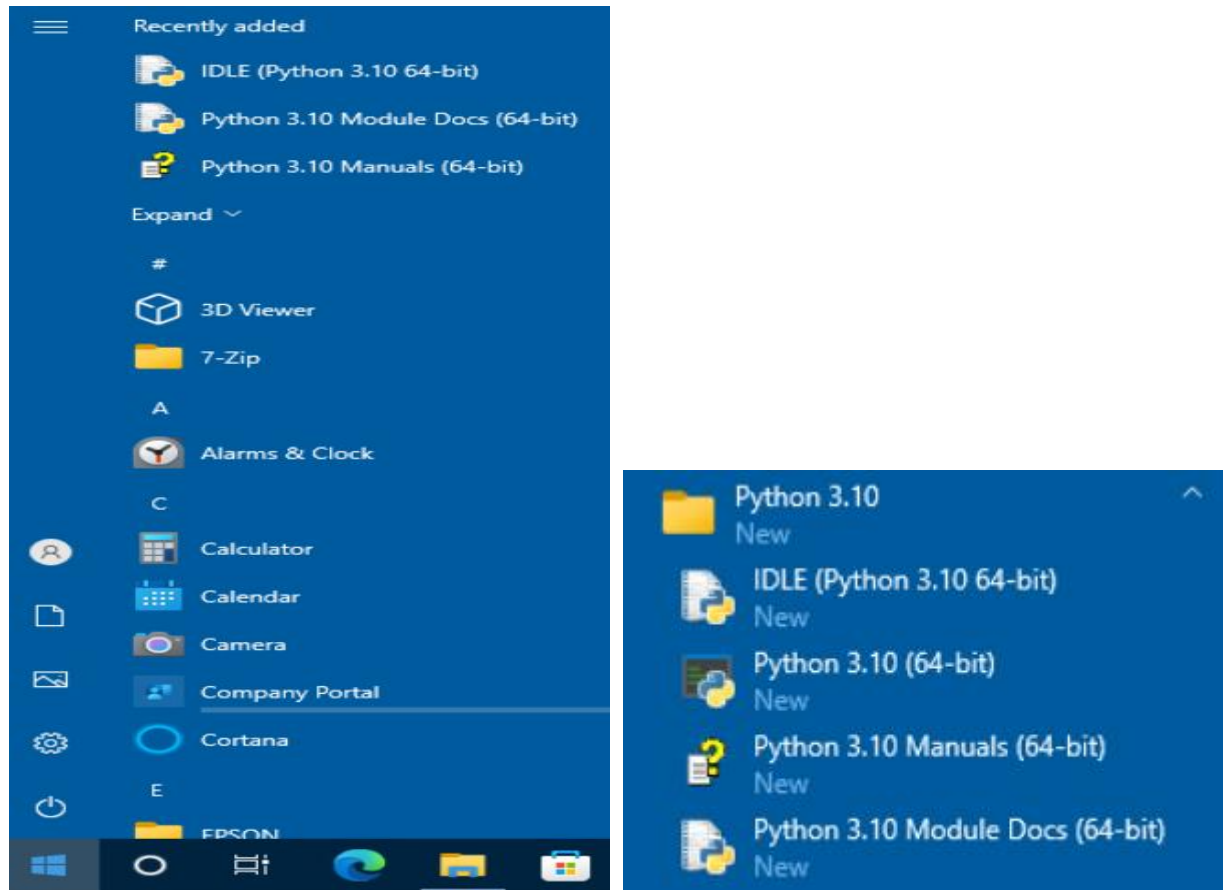


```
Command Prompt
Microsoft Windows [Version 10.0.19044.1706]
(c) Microsoft Corporation. All rights reserved.

C:\Users\ram>python --version
Python 3.10.10

C:\Users\ram>
```

This is what got installed.



```
IDLE Shell 3.10.10
File Edit Shell Debug Options Window Help
Python 3.10.10 (tags/v3.10.10:aad5f6a, Feb 7 2023, 17:20:36) [MSC v.1929 64 bit
(AMD64)] on win32
Type "help", "copyright", "credits" or "license()" for more information.
>>> |
```

This complete Python install.

Thanks

**Ram**

**23<sup>rd</sup> Feb 2023**