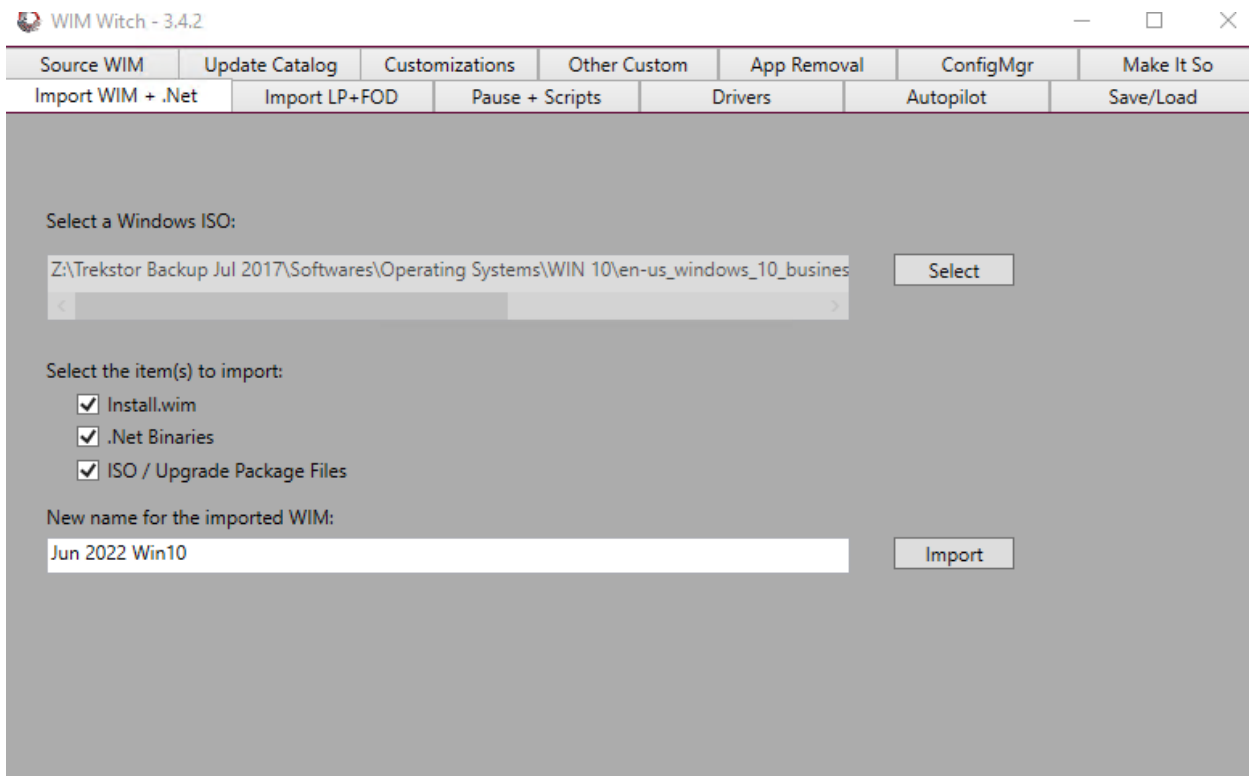


How to use WimWitch v3.4.2

In this post, I am going to share the steps in using WimWitch v3.4.2. Open WimWitch within PowerShell as Admin and off we go with these screen shots

```
Directory: C:\wimWitch

Mode                LastWriteTime         Length Name
----                -
d-----            27-Jul-2022   6:44 PM      Temp
07/27/2022 18:44:47 Information - This session is running as admin
07/27/2022 18:44:47 Information - This is a 64 bit PowerShell session
07/27/2022 18:44:47 Information - The currently installed version of WIM witch is 3.4.2
07/27/2022 18:44:47 Information - Checking for updates from PowerShell Gallery...
07/27/2022 18:44:56 Information - The latest version from the Gallery is 3.4.2
07/27/2022 18:44:56 Information - WIM Witch is up to date. Starting WIM witch
07/27/2022 18:44:56 Information - ConfigMgr feature disabled
07/27/2022 18:44:56 Information - Site Information found in Registry
07/27/2022 18:44:56 Information - ConfigMgr detected and properties set
07/27/2022 18:44:56 Information - ConfigMgr feature enabled
07/27/2022 18:44:56 Information - Site Code - TOR
07/27/2022 18:44:56 Information - Site Server - CB.RAMLAN.CA
07/27/2022 18:45:00 Information - ConfigMgr PowerShell module imported
07/27/2022 18:45:00 Information - ConfigMgr is selected as the update catalog
07/27/2022 18:45:00 Comment - *****
07/27/2022 18:45:00 Comment - This version brings:
07/27/2022 18:45:00 Comment -
07/27/2022 18:45:00 Comment - Bug Fix for Win10 20H2 and .Net binary injection failing
07/27/2022 18:45:00 Comment - Bug Fix for Win11 not applying LCU
07/27/2022 18:45:00 Comment - Added error output from DISM for .Net injection
07/27/2022 18:45:00 Comment -
07/27/2022 18:45:00 Comment - *****
07/27/2022 18:45:00 Information - Starting WIM Witch GUI
07/27/2022 18:49:45 Information - Z:\Trekstor Backup Jul 2017\Softwares\Operating Systems\WIN 10\en-us_windows_10_busi
ness_editions_version_21h2_updated_june_2022_x64_dvd_0e360967.iso selected as the ISO to import from
07/27/2022 18:51:18 Information - Checking to see if the destination WIM file exists...
07/27/2022 18:51:18 Information - Appending new file name with an extension
07/27/2022 18:51:18 Information - Name appears to be good. Continuing...
07/27/2022 18:51:18 Information - Mounting ISO...
07/27/2022 18:51:22 Information - MSFT_DiskImage (ImagePath = "Z:\Trekstor Backup Jul 2017\Softwares\0..., StorageType
= 1)
21H2
07/27/2022 18:52:27 Information - Purging staging folder...
07/27/2022 18:52:27 Information - Purge complete.
07/27/2022 18:52:27 Information - Copying WIM file to the staging folder...
```



Select Win10 Version

Please select the correct version of Windows 10.

21H2 OK Cancel

WIM Witch - 3.4.2

Source WIM	Update Catalog	Customizations	Other Custom	App Removal	ConfigMgr	Make It So
Import WIM + .Net	Import LP+FOD	Pause + Scripts	Drivers	Autopilot	Save/Load	

Object Type: Windows OS: Version:

Language Pack
Local Experience Pack
Feature On Demand

Selected items

Import

WIM Witch - 3.4.2

Source WIM	Update Catalog	Customizations	Other Custom	App Removal	ConfigMgr	Make It So
Import WIM + .Net	Import LP+FOD	Pause + Scripts	Drivers	Autopilot	Save/Load	

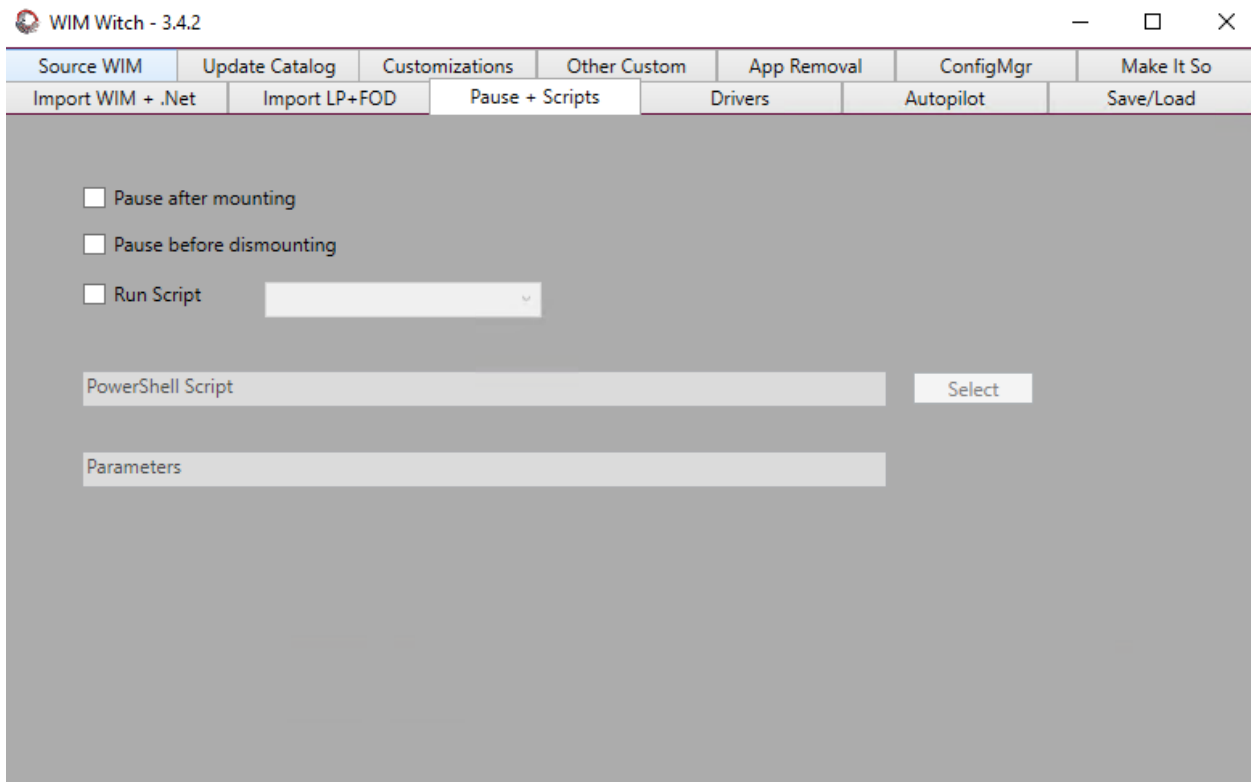
Object Type: Windows OS: Version:

path to source

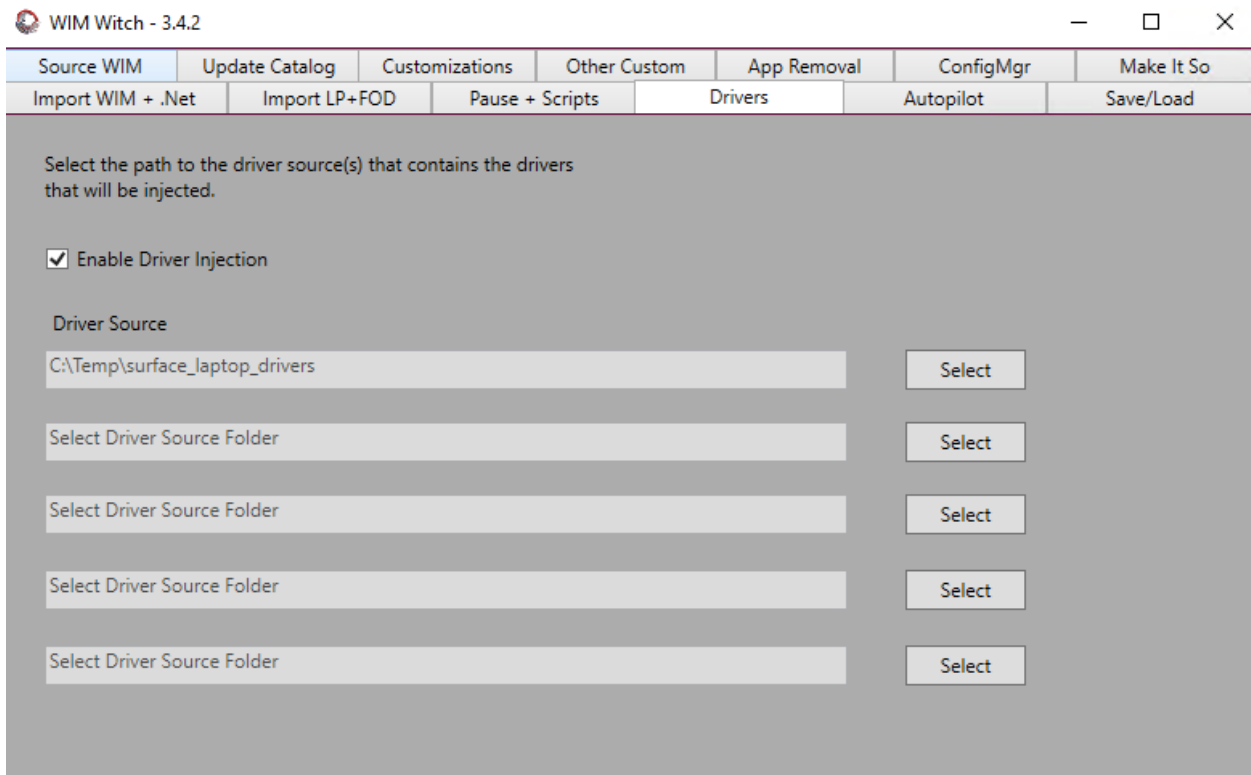
Windows Server
Windows 10
Windows 11

Selected items

Import



Going to inject Surface Pro Laptop 4 drivers



WIM Witch - 3.4.2

Source WIM	Update Catalog	Customizations	Other Custom	App Removal	ConfigMgr	Make It So
Import WIM + .Net	Import LP+FOD	Pause + Scripts	Drivers	Autopilot	Save/Load	

Select a JSON file for use in deploying Autopilot systems. The file will be copied to processing folder during the build

Enable Autopilot

Source JSON

ZTD ID#

Tenant Name

Deployment Profile

To download a new Autopilot profile from Intune, click select to choose the folder to save the file to. Then click Retrieve Profile.

Path to save file:

WIM Witch - 3.4.2

Source WIM	Update Catalog	Customizations	Other Custom	App Removal	ConfigMgr	Make It So
Import WIM + .Net	Import LP+FOD	Pause + Scripts	Drivers	Autopilot	Save/Load	

Provide a name for the saved configuration

Select configuration file to load

Choose an Image Index

Filter

+ Add criteria ▼

ImagePath	ImageName	ImageIndex	ImageDescription	ImageSize
E:\sources\install.wim	Windows 10 Education	1	Windows 10 Education	15,296,357,379
E:\sources\install.wim	Windows 10 Education N	2	Windows 10 Education N	14,541,540,282
E:\sources\install.wim	Windows 10 Enterprise	3	Windows 10 Enterprise	15,296,511,374
E:\sources\install.wim	Windows 10 Enterprise N	4	Windows 10 Enterprise N	14,541,446,559
E:\sources\install.wim	Windows 10 Pro	5	Windows 10 Pro	15,310,887,726
E:\sources\install.wim	Windows 10 Pro N	6	Windows 10 Pro N	14,538,662,766
E:\sources\install.wim	Windows 10 Pro Education	7	Windows 10 Pro Education	15,296,295,797
E:\sources\install.wim	Windows 10 Pro Education N	8	Windows 10 Pro Education N	14,541,477,800
E:\sources\install.wim	Windows 10 Pro for Workstations	9	Windows 10 Pro for Workstations	15,296,326,588
E:\sources\install.wim	Windows 10 Pro N for Workstations	10	Windows 10 Pro N for Workstations	14,541,509,041

WIM Witch - 3.4.2

Import WIM + .Net Import LP+FOD Pause + Scripts Drivers Autopilot Save/Load

Source WIM Update Catalog Customizations Other Custom App Removal ConfigMgr Make It So

Select the WIM file, and then Edition, that will serve as the base for the custom WIM.

Source Wim
E:\sources\install.wim

Edition Windows 10 Enterprise

Arch x64

Build 10.0.19041.1766

Patch Level 1766

Languages en-US

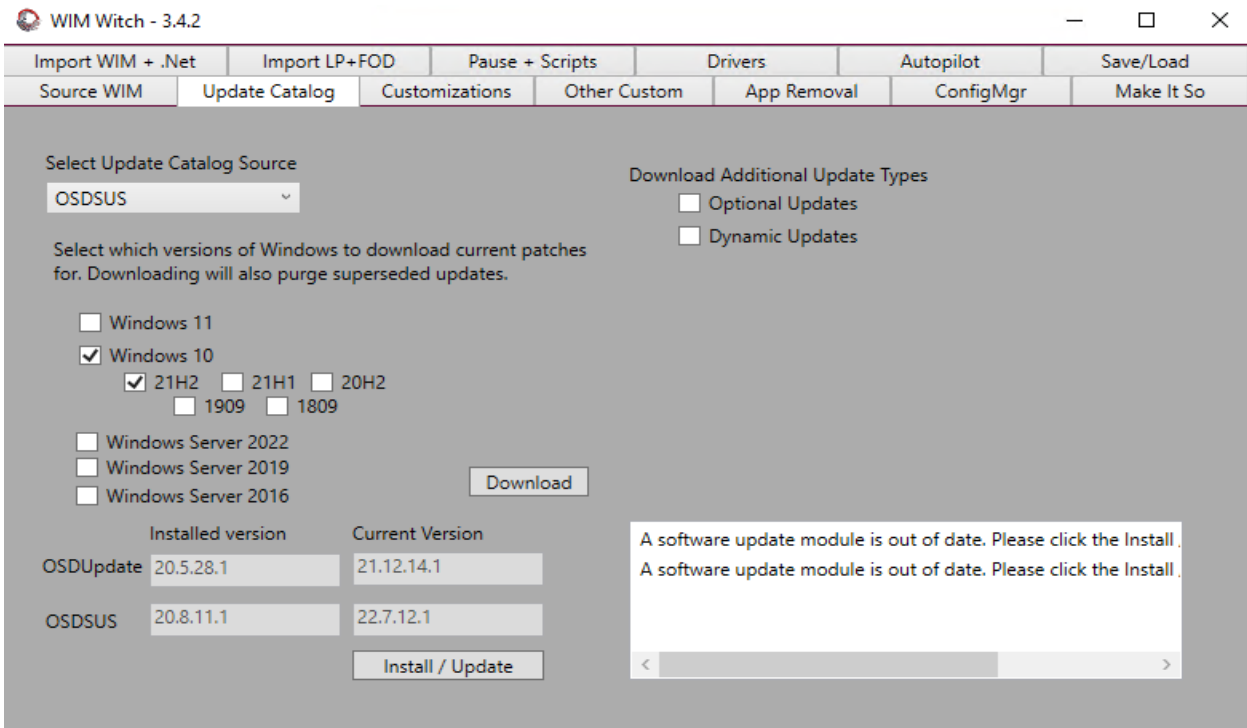
Index 3

Version

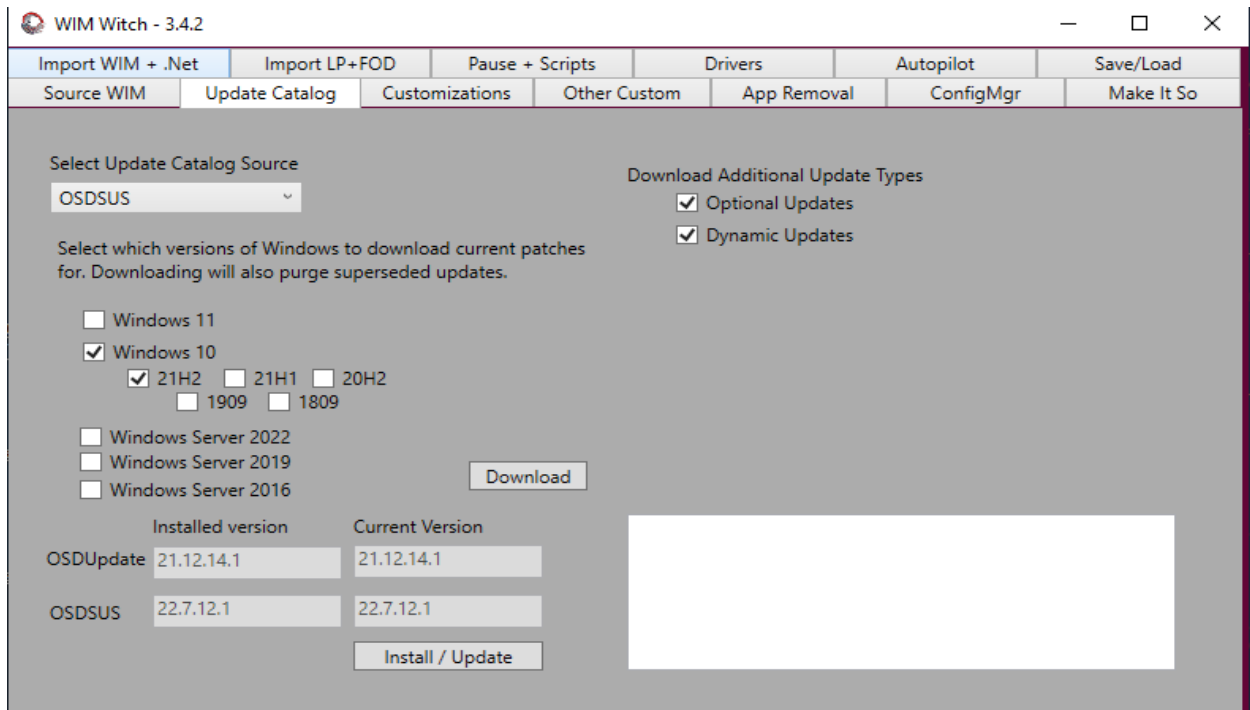
Select Win10 Version

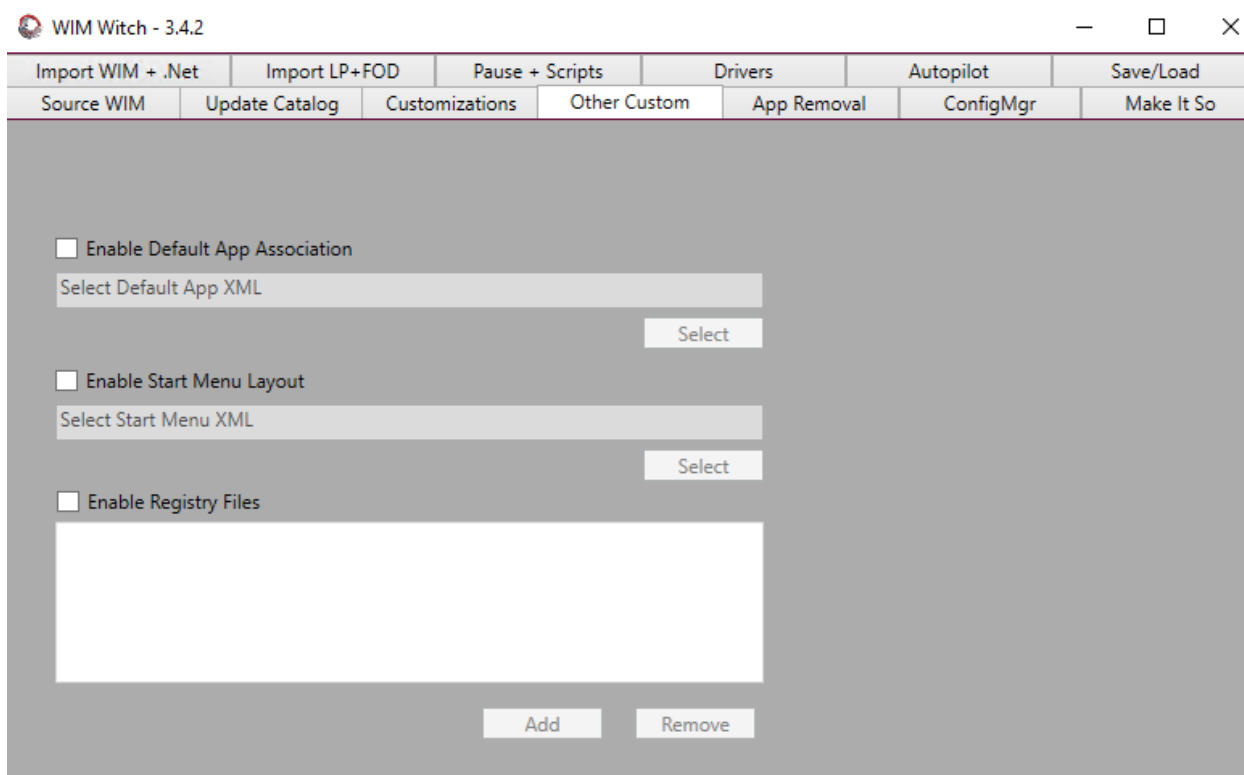
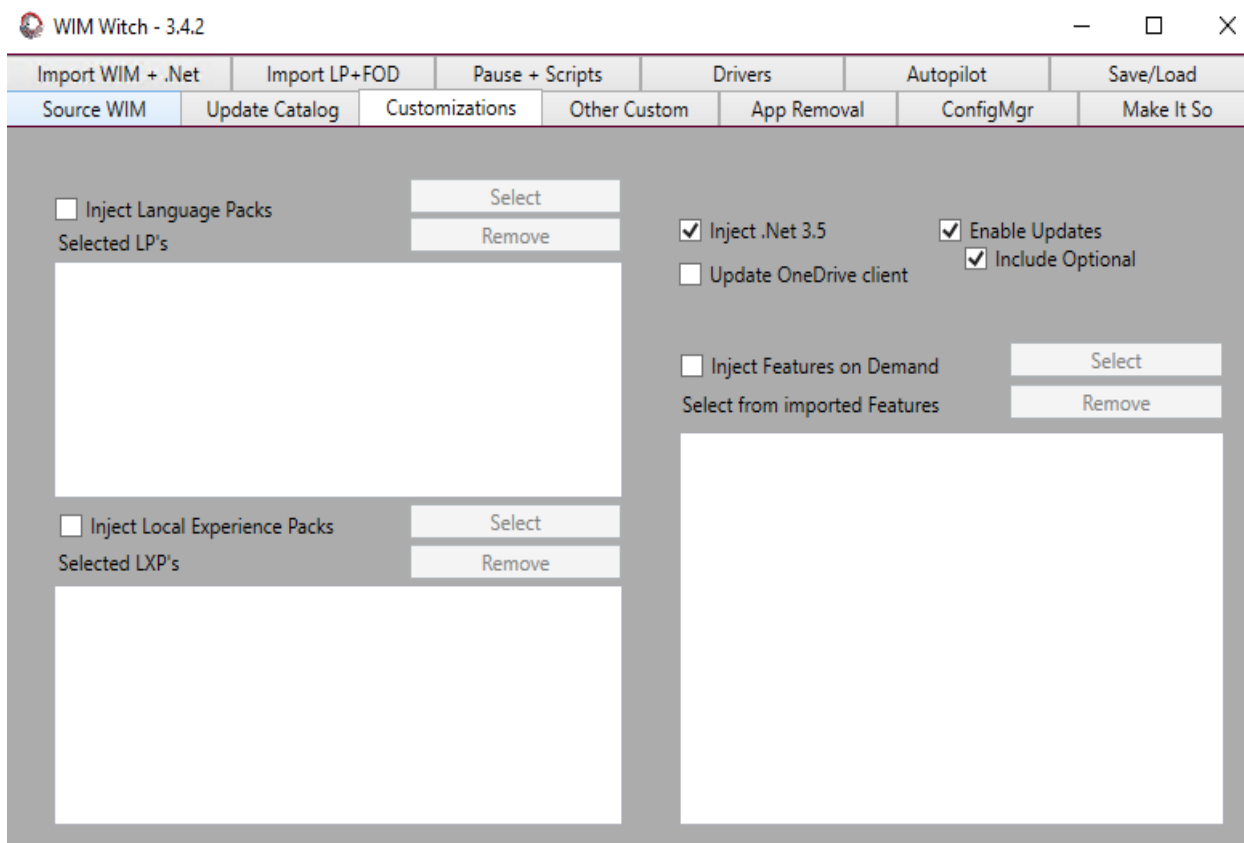
Please select the correct version of Windows 10.

21H2

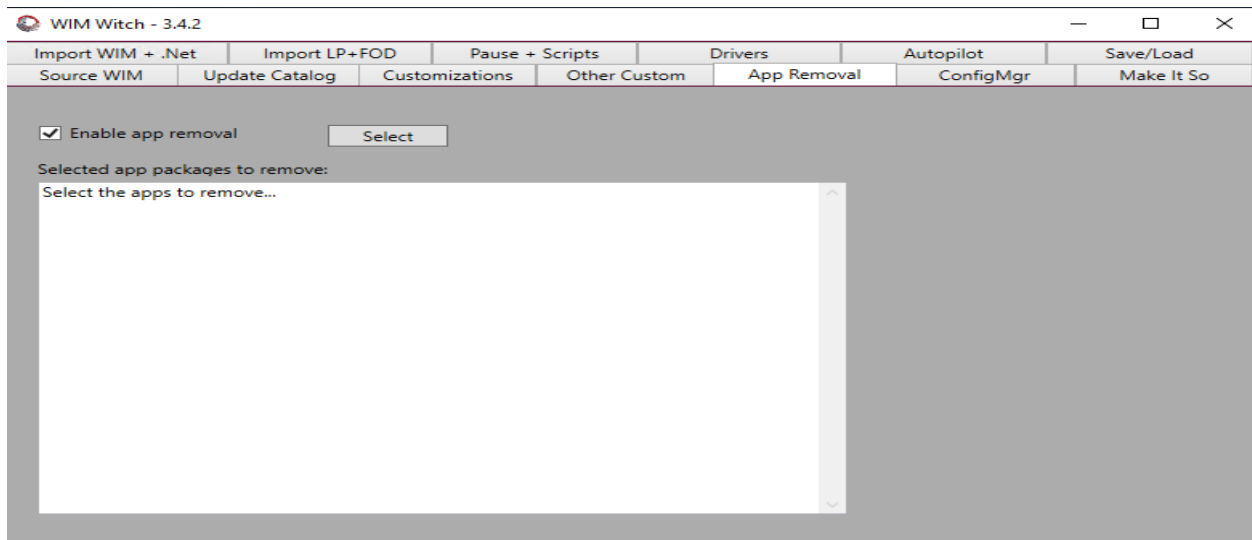


```
Installing package 'OSDUpdate'
Installing dependent package 'OSDSUS'
[
Installing package 'OSDSUS'
[
```



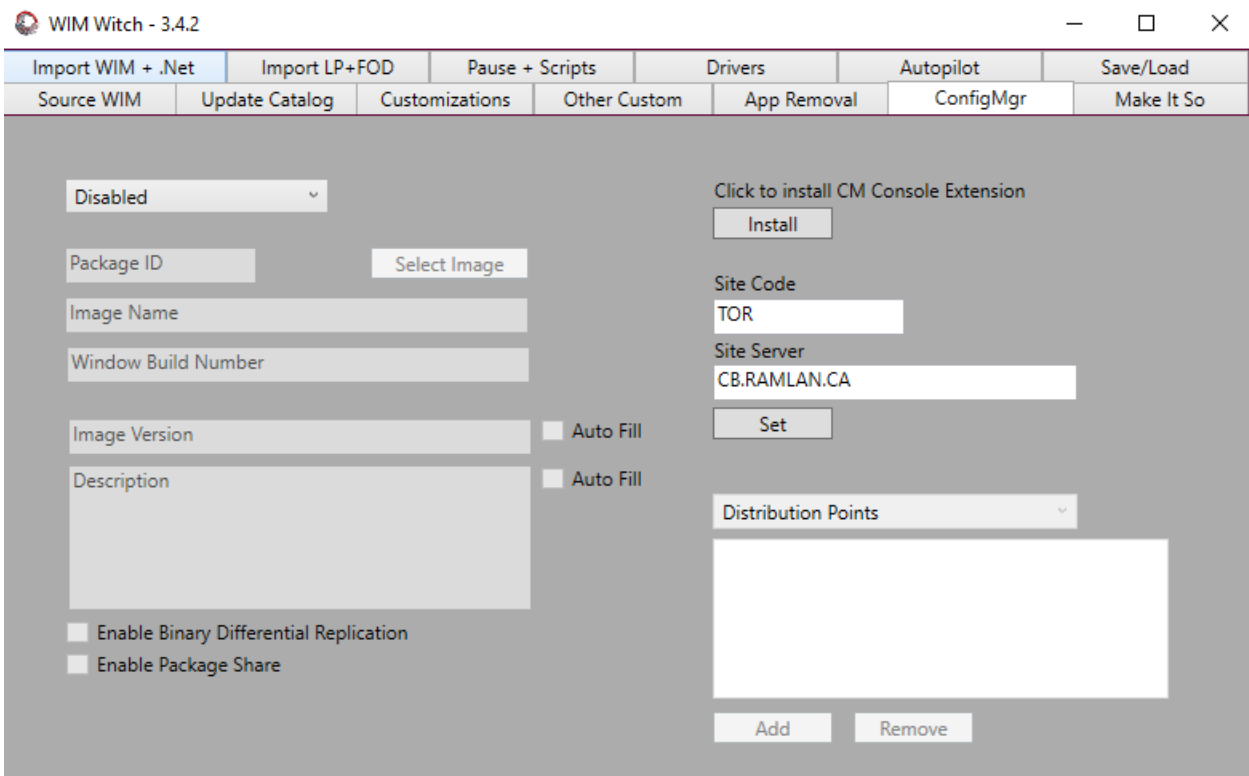
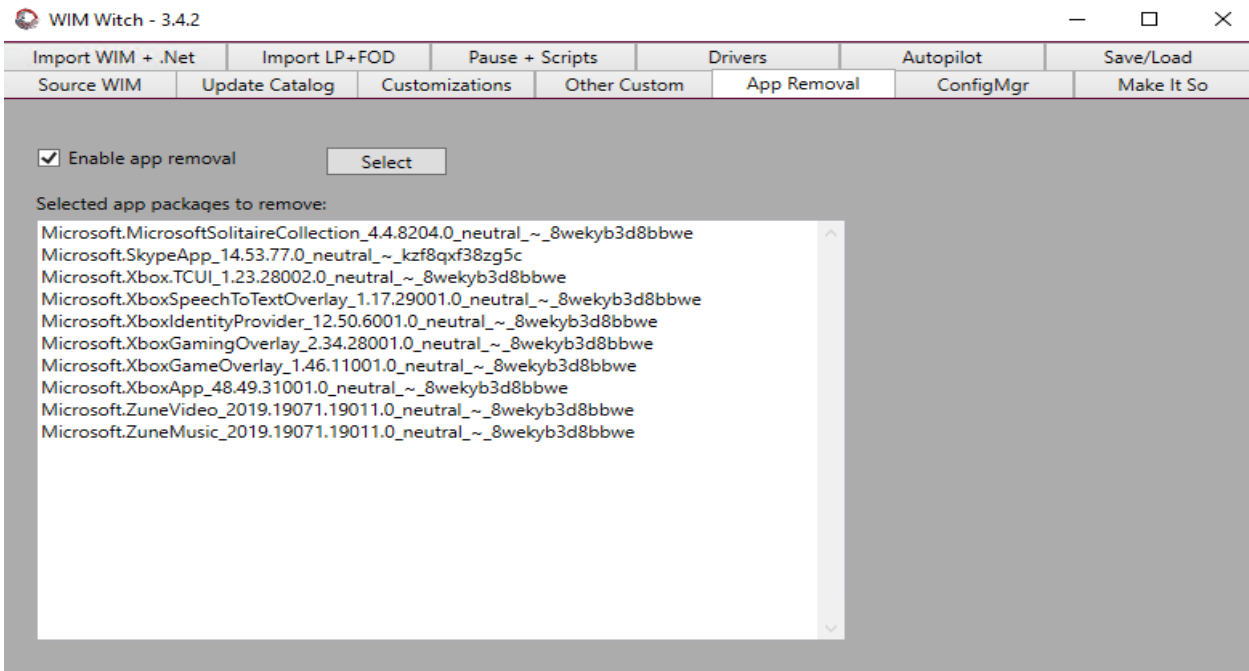


Here you can remove store app that you don't need and leave the rest ASIS

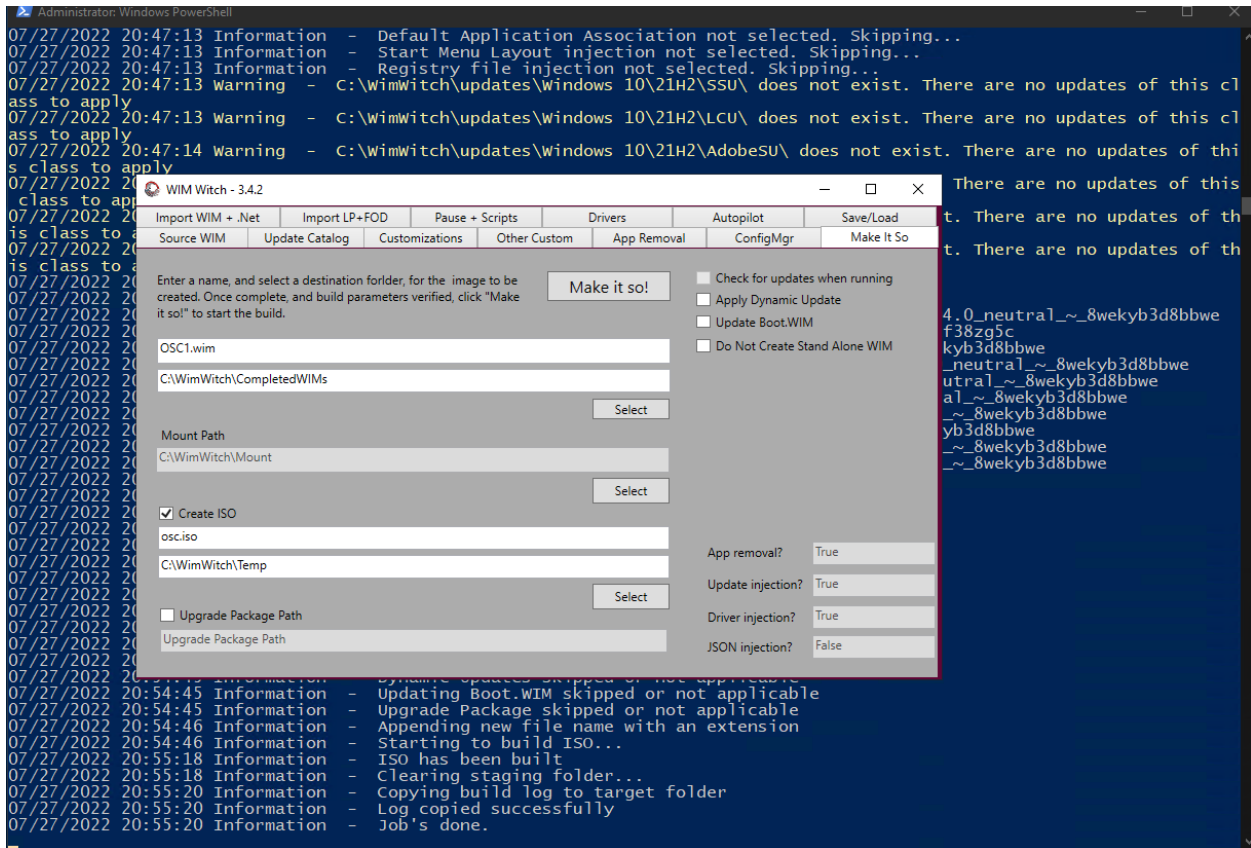


Microsoft.549981C3F5F10_1.1911.21713.0_neutral~_8wekyb3d8bbwe
Microsoft.BingWeather_4.25.20211.0_neutral~_8wekyb3d8bbwe
Microsoft.DesktopAppInstaller_2019.125.2243.0_neutral~_8wekyb3d8bbwe
Microsoft.GetHelp_10.1706.13331.0_neutral~_8wekyb3d8bbwe
Microsoft.Getstarted_8.2.22942.0_neutral~_8wekyb3d8bbwe
Microsoft.HEIFImageExtension_1.0.22742.0_x64__8wekyb3d8bbwe
Microsoft.Microsoft3DViewer_6.1908.2042.0_neutral~_8wekyb3d8bbwe
Microsoft.MicrosoftOfficeHub_18.1903.1152.0_neutral~_8wekyb3d8bbwe
Microsoft.MicrosoftSolitaireCollection_4.4.8204.0_neutral~_8wekyb3d8bbwe
Microsoft.MicrosoftStickyNotes_3.6.73.0_neutral~_8wekyb3d8bbwe
Microsoft.MixedReality.Portal_2000.19081.1301.0_neutral~_8wekyb3d8bbwe
Microsoft.MSPaint_2019.729.2301.0_neutral~_8wekyb3d8bbwe
Microsoft.Office.OneNote_16001.12026.20112.0_neutral~_8wekyb3d8bbwe
Microsoft.People_2019.305.632.0_neutral~_8wekyb3d8bbwe
Microsoft.ScreenSketch_2019.904.1644.0_neutral~_8wekyb3d8bbwe
Microsoft.SkypeApp_14.53.77.0_neutral~_kzf8qxf38zg5c
Microsoft.StorePurchaseApp_11811.1001.1813.0_neutral~_8wekyb3d8bbwe
Microsoft.VCLibs.140.00_14.0.27323.0_x64__8wekyb3d8bbwe
Microsoft.VP9VideoExtensions_1.0.22681.0_x64__8wekyb3d8bbwe
Microsoft.Wallet_2.4.18324.0_neutral~_8wekyb3d8bbwe
Microsoft.WebMediaExtensions_1.0.20875.0_neutral~_8wekyb3d8bbwe
Microsoft.WebpImageExtension_1.0.22753.0_x64__8wekyb3d8bbwe
Microsoft.Windows.Photos_2019.19071.12548.0_neutral~_8wekyb3d8bbwe
Microsoft.WindowsAlarms_2019.807.41.0_neutral~_8wekyb3d8bbwe
Microsoft.WindowsCalculator_2020.1906.55.0_neutral~_8wekyb3d8bbwe
Microsoft.WindowsCamera_2018.826.98.0_neutral~_8wekyb3d8bbwe
Microsoft.windowscommunicationsapps_16005.11629.20316.0_neutral~_8wekyb3d8bbwe
Microsoft.WindowsFeedbackHub_2019.1111.2029.0_neutral~_8wekyb3d8bbwe
Microsoft.WindowsMaps_2019.716.2316.0_neutral~_8wekyb3d8bbwe
Microsoft.WindowsSoundRecorder_2019.716.2313.0_neutral~_8wekyb3d8bbwe
Microsoft.WindowsStore_11910.1002.513.0_neutral~_8wekyb3d8bbwe
Microsoft.Xbox.TCUI_1.23.28002.0_neutral~_8wekyb3d8bbwe
Microsoft.XboxApp_48.49.31001.0_neutral~_8wekyb3d8bbwe
Microsoft.XboxGameOverlay_1.46.11001.0_neutral~_8wekyb3d8bbwe
Microsoft.XboxGamingOverlay_2.34.28001.0_neutral~_8wekyb3d8bbwe
Microsoft.XboxIdentityProvider_12.50.6001.0_neutral~_8wekyb3d8bbwe
Microsoft.XboxSpeechToTextOverlay_1.17.29001.0_neutral~_8wekyb3d8bbwe

Microsoft.XboxIdentityProvider_12.50.6001.0_neutral_~_8wekyb3d8bbwe
 Microsoft.XboxSpeechToTextOverlay_1.17.29001.0_neutral_~_8wekyb3d8bbwe
 Microsoft.YourPhone_2019.430.2026.0_neutral_~_8wekyb3d8bbwe
 Microsoft.ZuneMusic_2019.19071.19011.0_neutral_~_8wekyb3d8bbwe
 Microsoft.ZuneVideo_2019.19071.19011.0_neutral_~_8wekyb3d8bbwe



Finally click Make it so and also create ISO. With this we have a new ISO and WIM file that can be used for deployment through SCCM or MDT.



Thanks

28th Jul 2022