

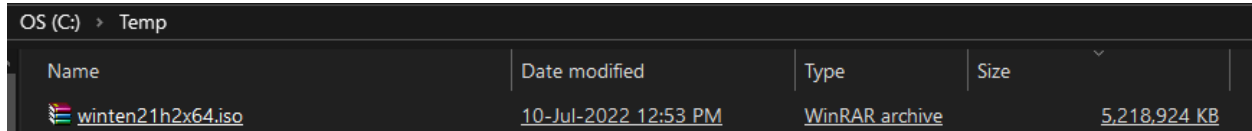
How to strip unwanted edition from Windows 10 ISO and add CU to the wim file

In this post, I am going to strip unwanted edition of windows and leave just Windows 10 Entp x64. The details are as follows:

Open CMD as Admin

Change directory to c:\temp

Mount the ISO



Name	Date modified	Type	Size
winten21h2x64.iso	10-Jul-2022 12:53 PM	WinRAR archive	5,218,924 KB

Run this command `Dism /Get-WimInfo /WimFile:"I:\Sources\Install.wim"` As you can see, I had just one edition (Index 1).

```
C:\Temp>Dism /Get-WimInfo /WimFile:"I:\sources\install.wim"

Deployment Image Servicing and Management tool
Version: 10.0.17763.1697

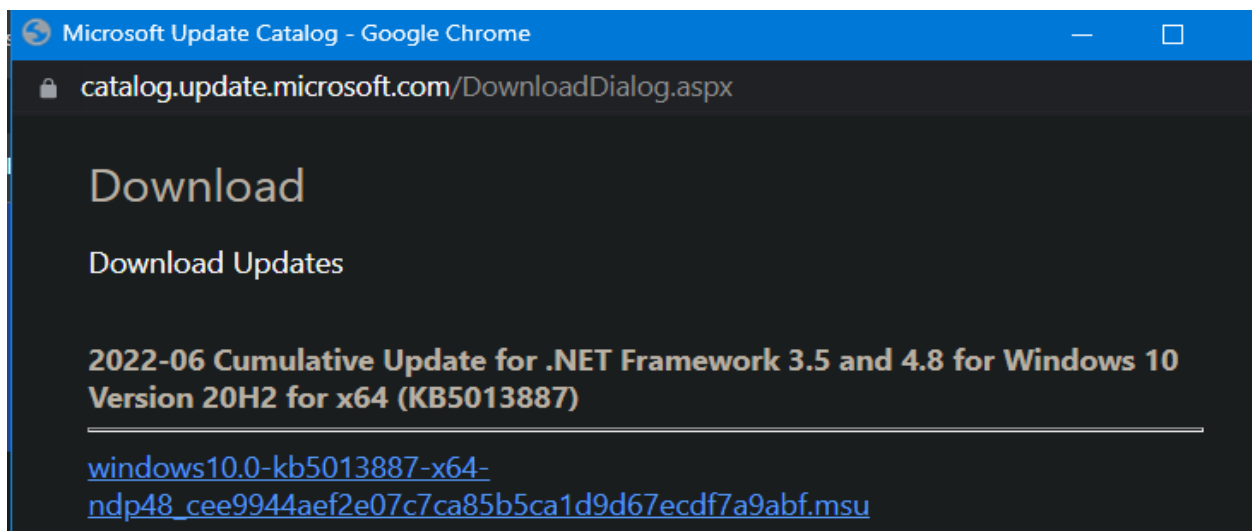
Details for image : I:\sources\install.wim

Index : 1
Name : Windows 10 Enterprise Evaluation
Description : Windows 10 Enterprise Evaluation
Size : 15,053,333,515 bytes

The operation completed successfully.
```

I am going to insert this CU update to the wim file.

<https://www.catalog.update.microsoft.com/Search.aspx?q=5013887>



I created a folder called Mount which will be used to mount the WIM file and inject the CU. I also created a folder called Win10 where, I copied all the ISO files.

OS (C:) > Mount

After you download the ISO, extract the ISO file to a folder. Or right-click the ISO file and mount it. Copy the contents of Windows 10 media to a folder.

OS (C:) > IT > Win10

Name	Date modified	Type	Size
boot	11-Jul-2022 6:...	File folder	
efi	11-Jul-2022 6:...	File folder	
sources	11-Jul-2022 6:...	File folder	
support	06-Oct-2021 2:...	File folder	
autorun.inf	06-Oct-2021 2:...	Setup Informati...	1 KB
bootmgr	06-Oct-2021 2:...	File	405 KB
bootmgr.efi	06-Oct-2021 2:...	EFI File	1,506 KB
setup.exe	06-Oct-2021 2:...	Application	73 KB

Now our command to mount install.wim file

```
DISM /mount-wim /wimfile:"C:\IT\Win10\sources\install.wim" /index:1 /mountdir:"C:\Mount"
```

```
Administrator: C:\Windows\system32\cmd.exe

C:\Temp>DISM /mount-wim /wimfile:"C:\IT\Win10\sources\install.wim" /index:1 /mountdir:"C:\Mount"

Deployment Image Servicing and Management tool
Version: 10.0.17763.1697

Mounting image
[=====100.0%=====]
The operation completed successfully.
```

Now we are ready to inject the CU with below command.

```
Dism /Add-Package /Image:"C:\Mount" /PackagePath="C:\Temp\windows10.0-kb5013887-x64-ndp48_cee9944aef2e07c7ca85b5ca1d9d67ecdf7a9abf.msu" /LogPath=C:\Mount\dism.log
```

```
C:\Temp>Dism /Add-Package /Image:"C:\Mount" /PackagePath="C:\Temp\windows10.0-kb5013887-x64-ndp48_cee9944aef2e07c7ca85b5ca1d9d67ecdf7a9abf.msu" /LogPath=C:\Mount\dism.log

Deployment Image Servicing and Management tool
Version: 10.0.17763.1697

Image Version: 10.0.19044.1288

Processing 1 of 1 - Adding package C:\Temp\windows10.0-kb5013887-x64-ndp48_cee9944aef2e07c7ca85b5ca1d9d67ecdf7a9abf.msu
[=====100.0%=====]
The operation completed successfully.
```

After you successfully add the update package to image file, using the below command you can verify the update package.

Dism /Get-Packages /image:C:\Mount

```
Administrator: C:\Windows\system32\cmd.exe
Package Identity : Package_for_DotNetRollup~31bf3856ad364e35~amd64~~10.0.4515.1
State : Installed
Release Type : Update
Install Time : 11-Jul-2022 10:57 PM

Package Identity : Package_for_KB5003791~31bf3856ad364e35~amd64~~19041.1237.1.3
State : Installed
Release Type : Update
Install Time : 06-Oct-2021 1:45 PM

Package Identity : Package_for_RollupFix~31bf3856ad364e35~amd64~~19041.1288.1.7
State : Installed
Release Type : Security Update
Install Time : 06-Oct-2021 1:59 PM

Package Identity : Package_for_ServicingStack~31bf3856ad364e35~amd64~~19041.1220.1.0
State : Installed
Release Type : Security Update
Install Time : 06-Oct-2021 1:45 PM

Package Identity : Package_for_ServicingStack~31bf3856ad364e35~amd64~~19041.985.1.1
State : Superseded
Release Type : Security Update
Install Time : 06-Oct-2021 1:45 PM

The operation completed successfully.
```

After you add the update package to the image, the last step is to dismount the wim file and commit changes. Unless you commit the changes the process isn't complete.

dism.exe /Unmount-wim /mountdir:"C:\Mount" /commit

```
C:\Temp>dism.exe /Unmount-wim /mountdir:"C:\Mount" /commit

Deployment Image Servicing and Management tool
Version: 10.0.17763.1697

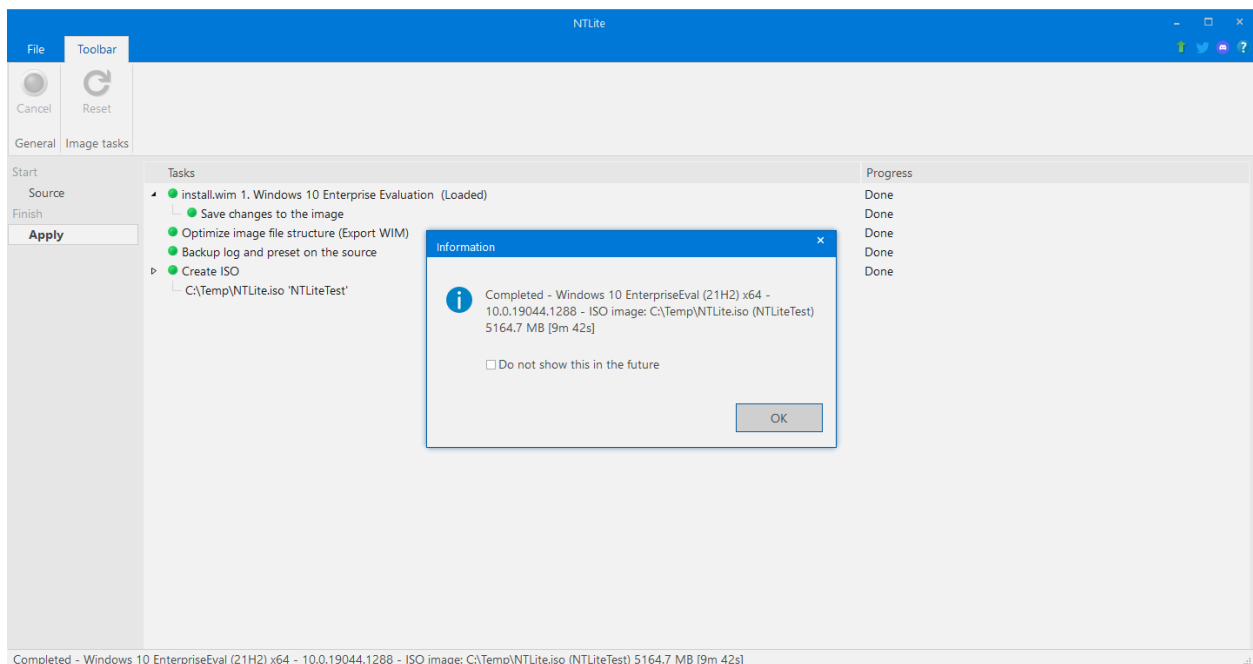
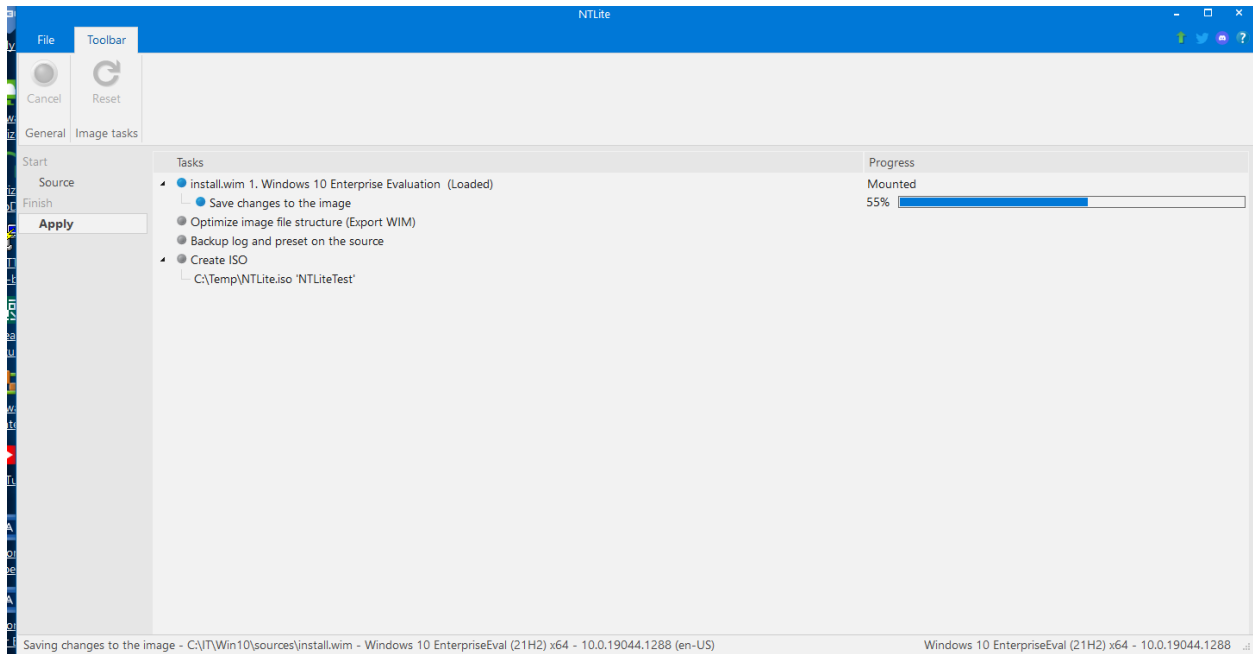
Image File : C:\IT\Win10\sources\install.wim
Image Index : 1
Saving image
[=====100.0%=====]
Unmounting image
[=====100.0%=====]
```

<https://www.prajwaldesai.com/add-windows-update-package-to-windows-10-image/>

You can use this tool as well to update the ISO with latest updates. Download the file – install and open.

<https://www.ntlite.com/download/>

Click Add – Select the folder where you have mounted ISO files that contain install.wim file. Once the wim file is loaded click Add to include any updates you want to inject to the ISO. Make sure to manually download the updates and put them in a folder. Select the folder and the app will add all the updates. Click Apply and then we are ready to save the WIM file and also create a new ISO after injecting the updates. For this test, I included June CU5013887



Below we have a brand new ISO file.

Name	Date modified	Type	Size
NTLite.iso	11-Jul-2022 7:52 PM	WinRAR archive	5,288,640 KB

```
dism /get-wiminfo /wimfile:I:\sources\install.wim /index:1
```

```
Administrator: C:\Windows\system32\cmd.exe

C:\Temp>dism /get-wiminfo /wimfile:I:\sources\install.wim /index:1

Deployment Image Servicing and Management tool
Version: 10.0.17763.1697

Details for image : I:\sources\install.wim

Index : 1
Name : Windows 10 Enterprise Evaluation
Description : Windows 10 Enterprise Evaluation
Size : 15,226,033,945 bytes
WIM Bootable : No
Architecture : x64
Hal : <undefined>
Version : 10.0.19041
ServicePack Build : 1288
ServicePack Level : 0
Edition : EnterpriseEval
Installation : Client
ProductType : WinNT
ProductSuite : Terminal Server
System Root : WINDOWS
Directories : 26758
Files : 97994
Created : 06-Oct-2021 - 10:07:52 AM
Modified : 11-Jul-2022 - 7:51:01 PM
Languages :
    en-US (Default)

The operation completed successfully.
```

<https://www.winhelponline.com/blog/slipstream-windows-10-integrate-updates-setup-media-iso/>

<https://www.paehl.de/dism-gui> - You can also use this tool as well.

Thanks

Ram

11th Jul 2022