

# Installing SQL Server 2022 CTP

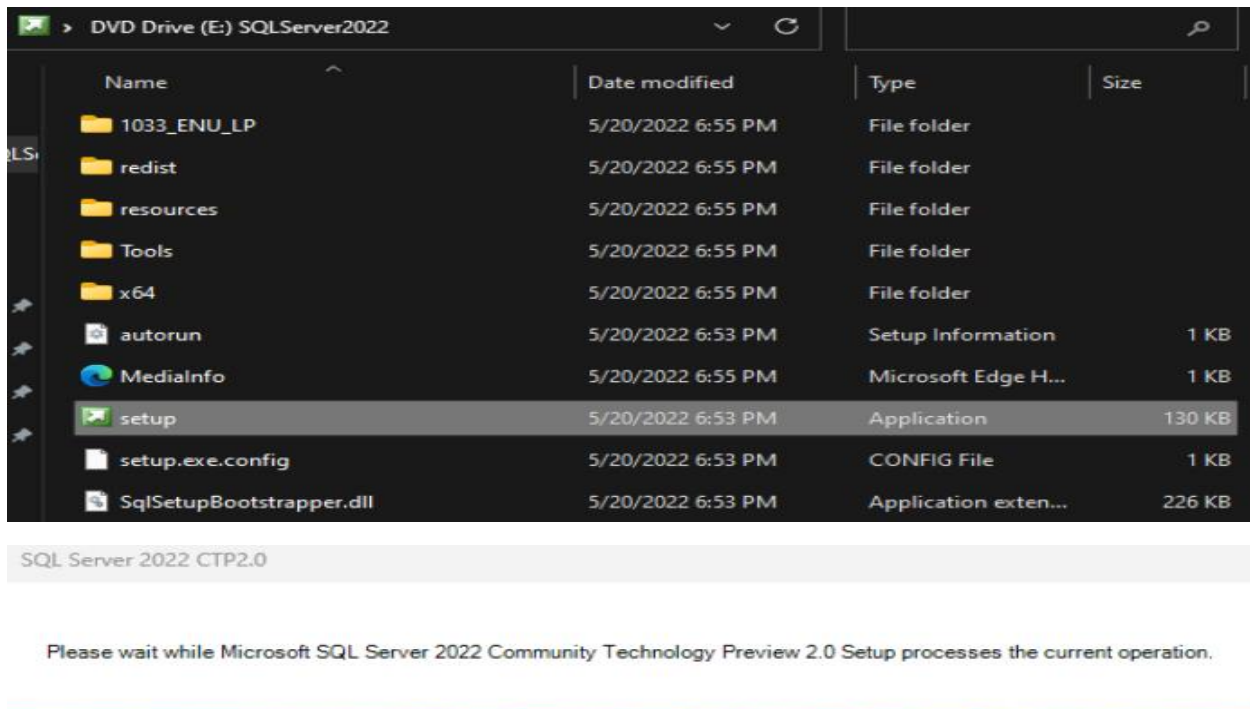
In this post, I am going to install SQL Server 2022 on Windows Server 2022(vNEXT). Just want to check out new features in this release.

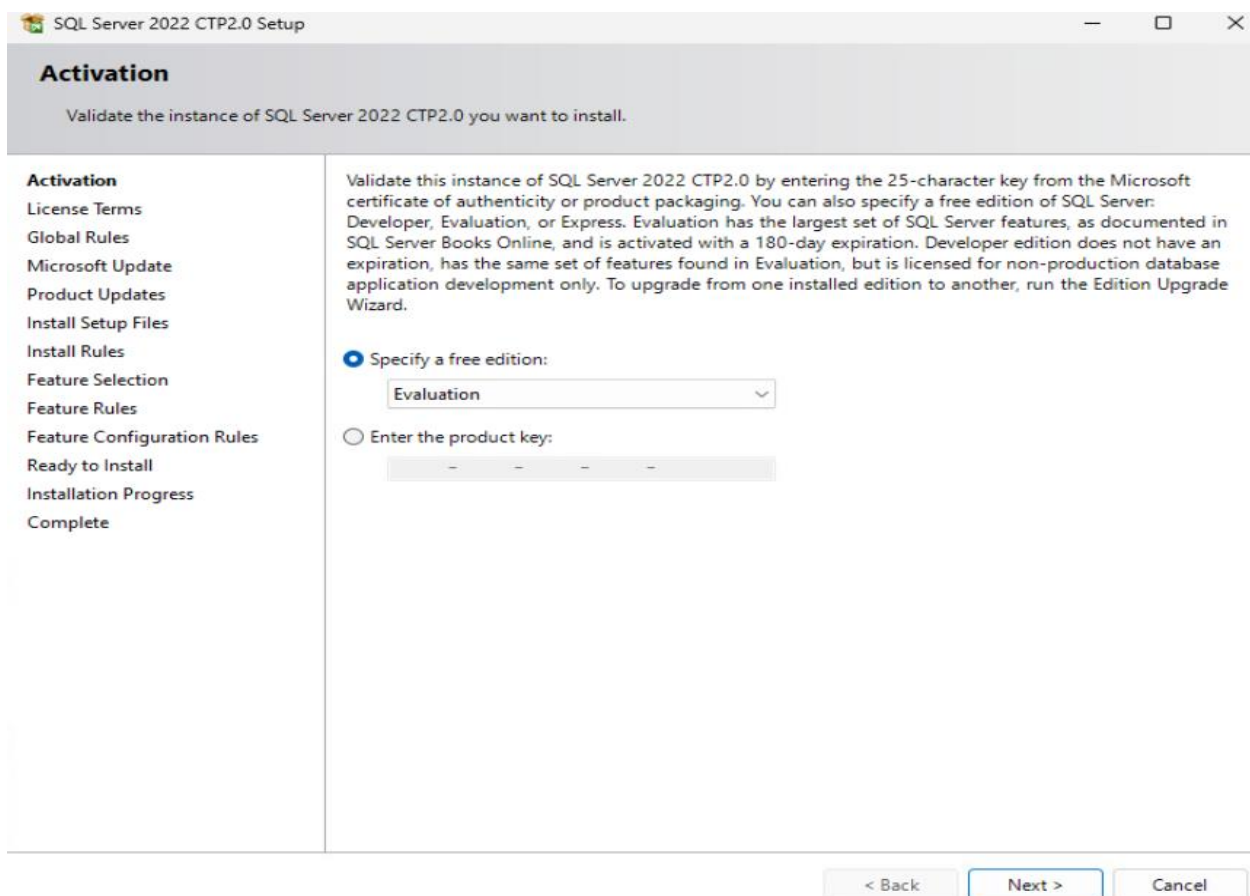
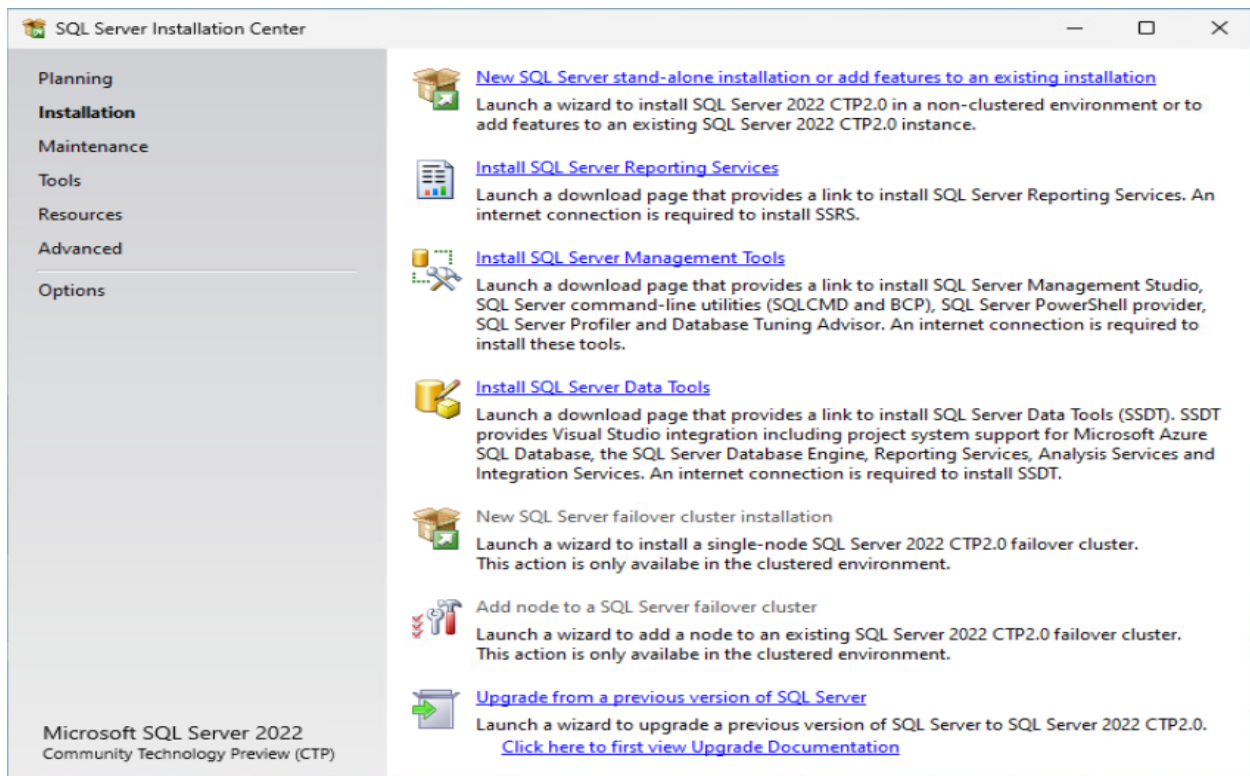
I was able to download trial version from Microsoft site. You can do the same from here

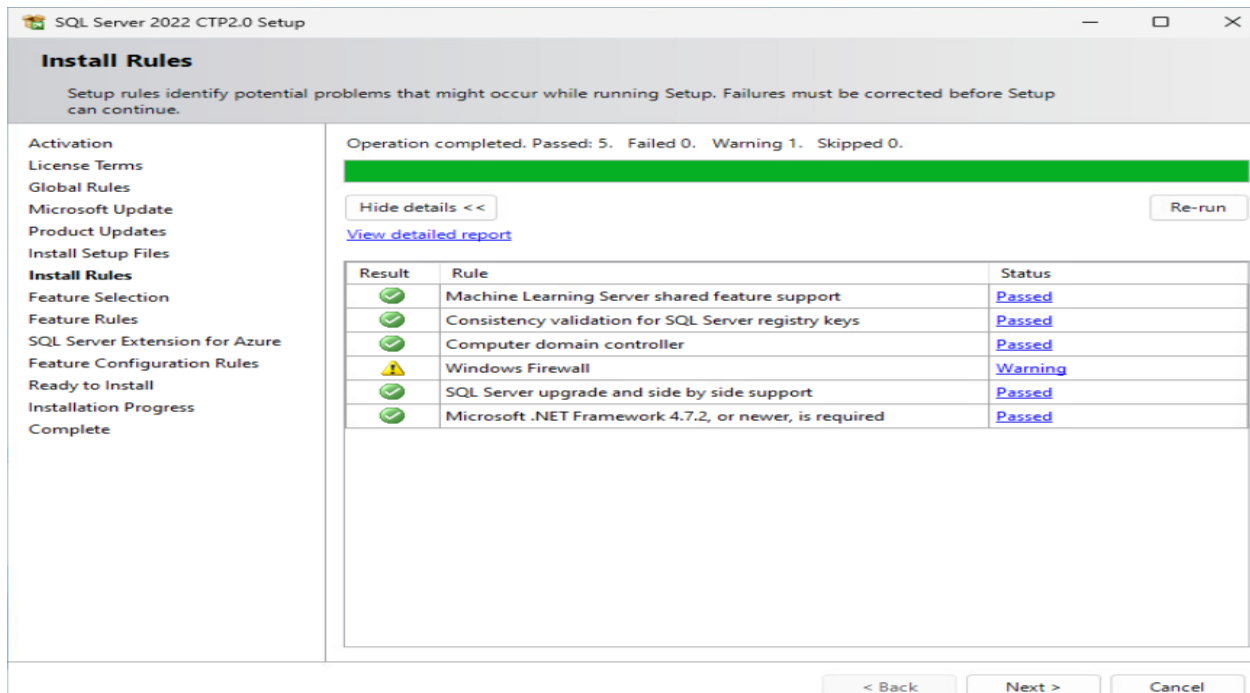
<https://download.microsoft.com/download/4/0/2/4027643f-d845-4250-ae93-e66854ee1de6/SQLServer2022-x64-ENU.iso>



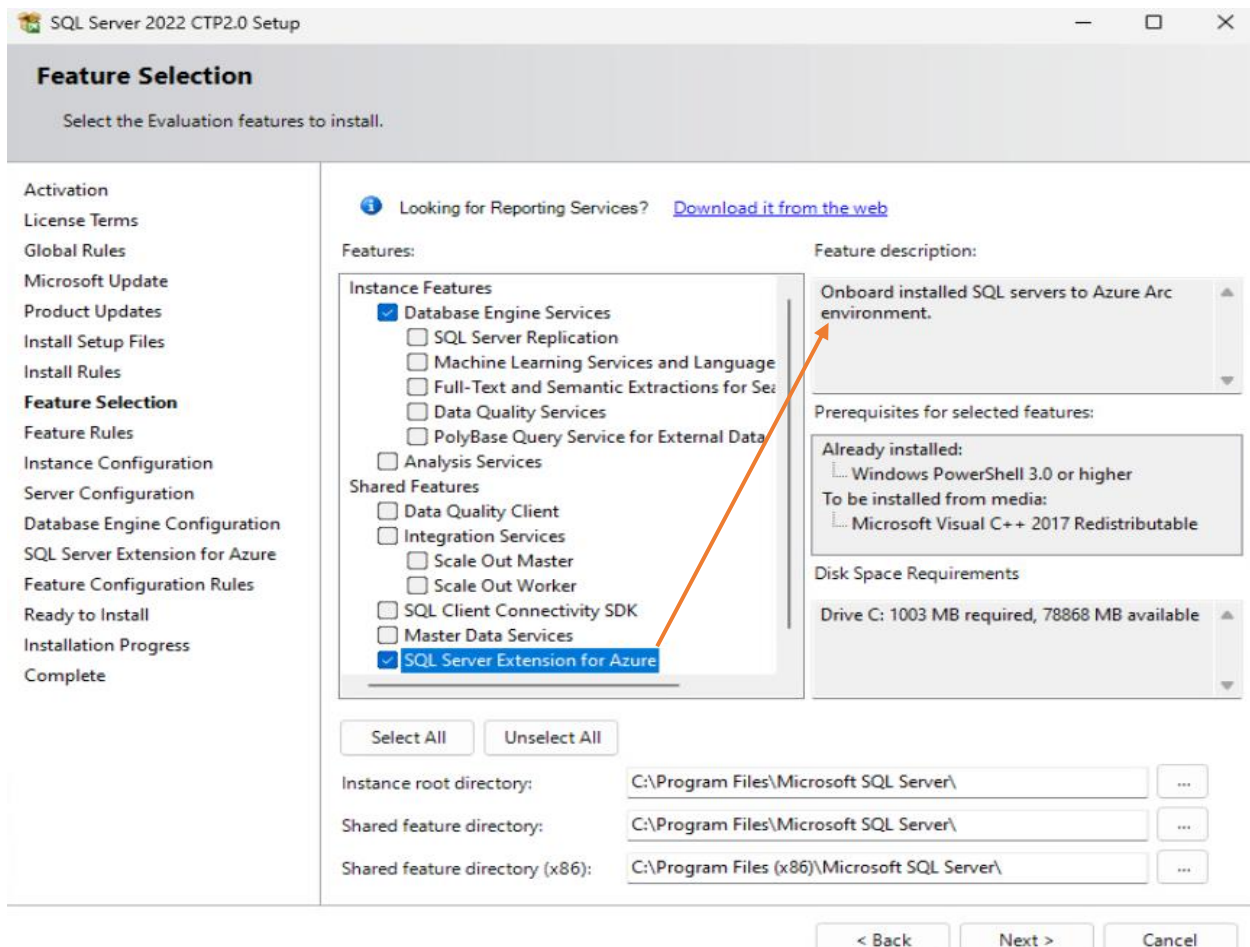
Mount the ISO and run setup.exe







This Azure feature is new in SQL 2022 CTP. It is selected by default.



SQL Server 2022 CTP2.0 Setup

### Instance Configuration

Specify the name and instance ID for the instance of SQL Server. Instance ID becomes part of the installation path.

Activation  
License Terms  
Global Rules  
Microsoft Update  
Product Updates  
Install Setup Files  
Install Rules  
Feature Selection  
Feature Rules  
**Instance Configuration**  
Server Configuration  
Database Engine Configuration  
SQL Server Extension for Azure  
Feature Configuration Rules  
Ready to Install  
Installation Progress  
Complete

☐ Default instance

☒ Named instance: \* SQL2022

Instance ID: SQL2022

SQL Server directory: C:\Program Files\Microsoft SQL Server\MSSQL16.SQL2022

Installed instances:

Instance Name	Instance ID	Features	Edition	Version
---------------	-------------	----------	---------	---------

< Back    Next >    Cancel

SQL Server 2022 CTP2.0 Setup

### Server Configuration

Specify the service accounts and collation configuration.

Activation  
License Terms  
Global Rules  
Microsoft Update  
Product Updates  
Install Setup Files  
Install Rules  
Feature Selection  
Feature Rules  
Instance Configuration  
**Server Configuration**  
Database Engine Configuration  
SQL Server Extension for Azure  
Feature Configuration Rules  
Ready to Install  
Installation Progress  
Complete

Service Accounts    Collation

Microsoft recommends that you use a separate account for each SQL Server service.

Service	Account Name	Password	Startup Type
SQL Server Agent	NT Service\SQLAgent\$S...		Manual ▾
SQL Server Database Engine	NT Service\MSSQL\$SQL...		Automatic ▾
SQL Server Browser	NT AUTHORITY\LOCAL ...		Automatic ▾

☐ Grant Perform Volume Maintenance Tasks privilege to SQL Server Database Engine Service

This privilege enables instant file initialization by avoiding zeroing of data pages. This may lead to information disclosure by allowing deleted content to be accessed.

[Click here for details](#)

< Back    Next >    Cancel

SQL Server 2022 CTP2.0 Setup

Server Configuration

Specify the service accounts and collation configuration.

Activation

License Terms

Global Rules

Microsoft Update

Product Updates

Install Setup Files

Install Rules

Feature Selection

Feature Rules

Instance Configuration

**Server Configuration**

Database Engine Configuration

SQL Server Extension for Azure

Feature Configuration Rules

Ready to Install

Installation Progress

Complete

Service Accounts

Collation

Database Engine:

SQL\_Latin1\_General\_CP1\_CI\_AS

Customize...

Latin1-General, case-insensitive, accent-sensitive, kanatype-insensitive, width-insensitive for Unicode Data, SQL Server Sort Order 52 on Code Page 1252 for non-Unicode Data

< Back

Next >

Cancel

SQL Server 2022 CTP2.0 Setup

Database Engine Configuration

Specify Database Engine authentication security mode, administrators, data directories, TempDB, Max degree of parallelism, Memory limits, and Filestream settings.

Activation

License Terms

Global Rules

Microsoft Update

Product Updates

Install Setup Files

Install Rules

Feature Selection

Feature Rules

Instance Configuration

Server Configuration

**Database Engine Configuration**

SQL Server Extension for Azure

Feature Configuration Rules

Ready to Install

Installation Progress

Complete

Server Configuration

Data Directories

TempDB

MaxDOP

Memory

FILESTREAM

Specify the authentication mode and administrators for the Database Engine.

Authentication Mode

☒ Windows authentication mode

☐ Mixed Mode (SQL Server authentication and Windows authentication)

Specify the password for the SQL Server system administrator (sa) account.

Enter password:

Confirm password:

Specify SQL Server administrators

VNEXT2025\Administrator (Administrator)

SQL Server administrators have unrestricted access to the Database Engine.

Add Current User

Add...

Remove

< Back

Next >

Cancel



SQL Server 2022 CTP2.0 Setup

Database Engine Configuration

Specify Database Engine authentication security mode, administrators, data directories, TempDB, Max degree of parallelism, Memory limits, and Filestream settings.

Activation

License Terms

Global Rules

Microsoft Update

Product Updates

Install Setup Files

Install Rules

Feature Selection

Feature Rules

Instance Configuration

Server Configuration

**Database Engine Configuration**

SQL Server Extension for Azure

Feature Configuration Rules

Ready to Install

Installation Progress

Complete

Server Configuration

Data Directories

TempDB

MaxDOP

Memory

FILESTREAM

Data root directory:

C:\Program Files\Microsoft SQL Server\

...

System database directory:

C:\Program Files\Microsoft SQL Server\MSSQL16.SQL2022\MSSQL\Data

User database directory:

C:\Program Files\Microsoft SQL Server\MSSQL16.SQL2022\MSSC

...

User database log directory:

C:\Program Files\Microsoft SQL Server\MSSQL16.SQL2022\MSSC

...

Backup directory:

C:\Program Files\Microsoft SQL Server\MSSQL16.SQL2022\MSSC

...

< Back

Next >

Cancel

SQL Server 2022 CTP2.0 Setup

Database Engine Configuration

Specify Database Engine authentication security mode, administrators, data directories, TempDB, Max degree of parallelism, Memory limits, and Filestream settings.

Activation

License Terms

Global Rules

Microsoft Update

Product Updates

Install Setup Files

Install Rules

Feature Selection

Feature Rules

Instance Configuration

Server Configuration

**Database Engine Configuration**

SQL Server Extension for Azure

Feature Configuration Rules

Ready to Install

Installation Progress

Complete

Server Configuration

Data Directories

TempDB

MaxDOP

Memory

FILESTREAM

TempDB data files:

tempdb.mdf, tempdb\_mssql\_#.ndf

Number of files:

2

Initial size (MB):

8

Total initial size (MB):

16

Autogrowth (MB):

64

Total autogrowth (MB):

128

Data directories:

C:\Program Files\Microsoft SQL Server\MSSQL16.SQL2022\MSSC

Add...

Remove

TempDB log file:

templog.ldf

Initial size (MB):

8

Autogrowth (MB):

64

Log directory:

C:\Program Files\Microsoft SQL Server\MSSQL16.SQL2022\MSSC

...

< Back

Next >

Cancel

SQL Server 2022 CTP2.0 Setup

Database Engine Configuration

Specify Database Engine authentication security mode, administrators, data directories, TempDB, Max degree of parallelism, Memory limits, and Filestream settings.

Activation  
License Terms  
Global Rules  
Microsoft Update  
Product Updates  
Install Setup Files  
Install Rules  
Feature Selection  
Feature Rules  
Instance Configuration  
Server Configuration  
**Database Engine Configuration**  
SQL Server Extension for Azure  
Feature Configuration Rules  
Ready to Install  
Installation Progress  
Complete

Server ConfigurationData DirectoriesTempDBMaxDOPMemoryFILESTREAM

When an instance of SQL Server runs on a computer that has more than one CPU logical core, it detects the best degree of parallelism, that is, the number of processors employed to run a single statement, for each parallel plan execution. MAXDOP specifies the maximum number of cores to utilize for this instance.

Detected logical CPU cores on this computer: 2

Maximum degree of parallelism (MaxDOP)\*:

\* The displayed default value was either calculated by Setup, or was explicitly specified on the Setup command line with the /SQLMAXDOP parameter.

You can modify the MaxDOP here to be used as the default in all query executions for this instance, unless overridden at the query level. To suppress parallel query plan generation, set MaxDOP to 1. See [Configure the max degree of parallelism Server Configuration Option](#) for more information.

< Back

Next >

Cancel

SQL Server 2022 CTP2.0 Setup

Database Engine Configuration

Specify Database Engine authentication security mode, administrators, data directories, TempDB, Max degree of parallelism, Memory limits, and Filestream settings.

Activation  
License Terms  
Global Rules  
Microsoft Update  
Product Updates  
Install Setup Files  
Install Rules  
Feature Selection  
Feature Rules  
Instance Configuration  
Server Configuration  
**Database Engine Configuration**  
SQL Server Extension for Azure  
Feature Configuration Rules  
Ready to Install  
Installation Progress  
Complete

Server ConfigurationData DirectoriesTempDBMaxDOPMemoryFILESTREAM

SQL Server can change its memory requirements dynamically based on available system resources. However, in some scenarios you can configure the range of memory (in MB) that is managed by the SQL Server Memory Manager for this instance, by specifying min server memory and/or max server memory.

☐ Recommended ☒ Default

Min Server Memory (MB):

Max Server Memory (MB):

\* The displayed recommended values were calculated by Setup based on your system configuration and edition, unless these were explicitly specified in the Setup command line using the /SQLMINMEMORY and /SQLMAXMEMORY parameters.

For more information see: [Server Memory Server Configuration Options](#).

☒ Click here to accept the recommended memory configurations for the SQL Server Database Engine

< Back

Next >

Cancel

SQL Server 2022 CTP2.0 Setup

Database Engine Configuration

Specify Database Engine authentication security mode, administrators, data directories, TempDB, Max degree of parallelism, Memory limits, and Filestream settings.

Activation

License Terms

Global Rules

Microsoft Update

Product Updates

Install Setup Files

Install Rules

Feature Selection

Feature Rules

Instance Configuration

Server Configuration

**Database Engine Configuration**

SQL Server Extension for Azure

Feature Configuration Rules

Ready to Install

Installation Progress

Complete

Server Configuration

Data Directories

TempDB

MaxDOP

Memory

FILESTREAM

☐ Enable FILESTREAM for Transact-SQL access

☐ Enable FILESTREAM for file I/O access

Windows share name:

☐ Allow remote clients access to FILESTREAM data

< Back

Next >

Cancel

SQL Server 2022 CTP2.0 Setup

SQL Server Extension for Azure

Enable Azure Arc Connectivity

Activation

License Terms

Global Rules

Microsoft Update

Product Updates

Install Setup Files

Install Rules

Feature Selection

Feature Rules

Instance Configuration

Server Configuration

Database Engine Configuration

**SQL Server Extension for Azure...**

Feature Configuration Rules

Ready to Install

Installation Progress

Complete

By connecting to Azure, you can leverage Azure services such as Microsoft Defender for cloud, AAD authentication, Microsoft Purview and many others. Use Azure Service Principal details to register below.

[Learn more about Azure Arc benefit for SQL Server](#)

Azure Service Principal ID

Required

Azure Service Principal Secret

.....

Azure Subscription ID

Required

Azure Resource Group

Required

Azure Region

Required

Azure Tenant ID

Required

Proxy Server URL

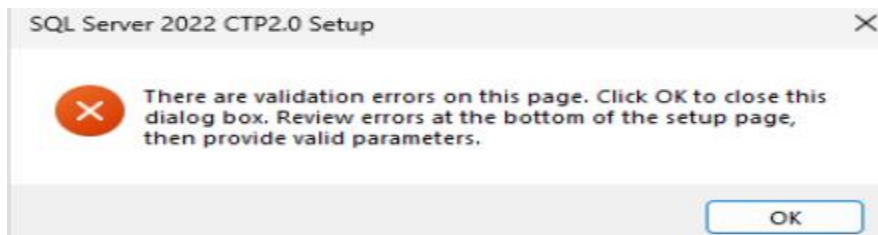
Optional

< Back

Next >

Cancel





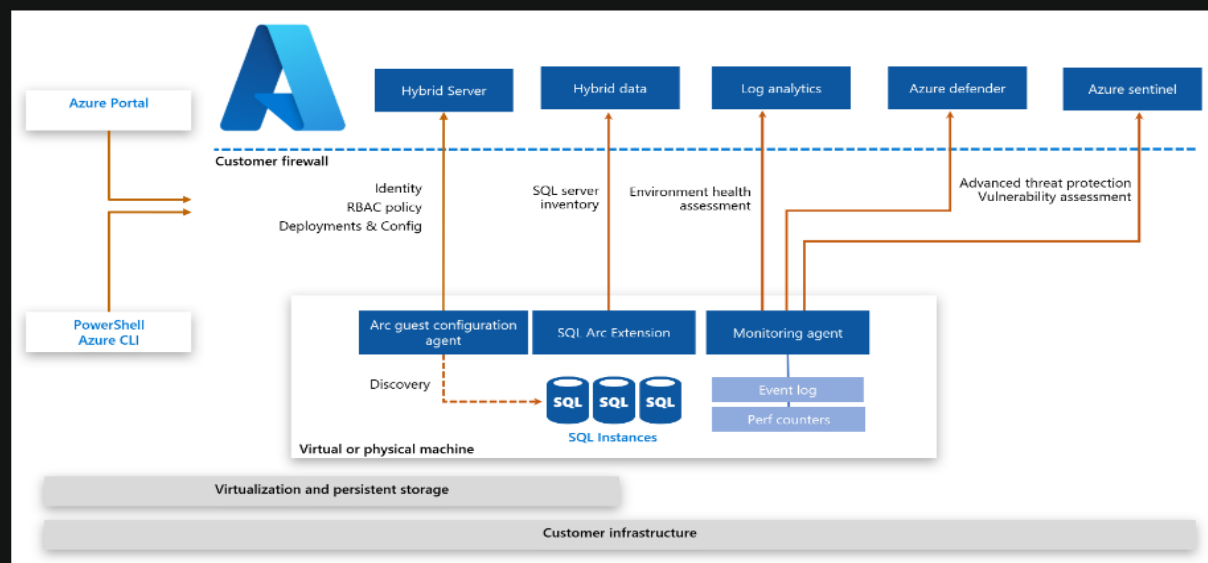
- ✗ Provided input is not valid. Expecting the AZURESUBSCRIPTIONID value to be in guid format.
- ✗ Provided input is not valid. Expecting the AZURETENANTID value to be in guid format.
- ✗ Provided input is not valid. Expecting the AZURESUBSCRIPTIONID value to be in guid format.

Because of Azure selection, I was not able to proceed. Had to uncheck because I did not have valid input for the above.

<https://docs.microsoft.com/en-us/sql/sql-server/azure-arc/overview?view=sql-server-ver16>

SQL Server on Azure Arc-enabled servers supports a set of solutions that require the Microsoft Monitoring Agent (MMA) server extension to be installed and connected to an Azure Log analytics workspace for data collection and reporting. These solutions include Advanced data security using Azure Security Center and Azure Sentinel, and SQL Environment health checks using On-demand SQL Assessment feature.

The following diagram illustrates the architecture of SQL Server on Azure Arc enable servers.



## Required permissions

To connect the SQL Server instances and the hosting machine to Azure Arc, you must have an account with privileges to perform the following actions:

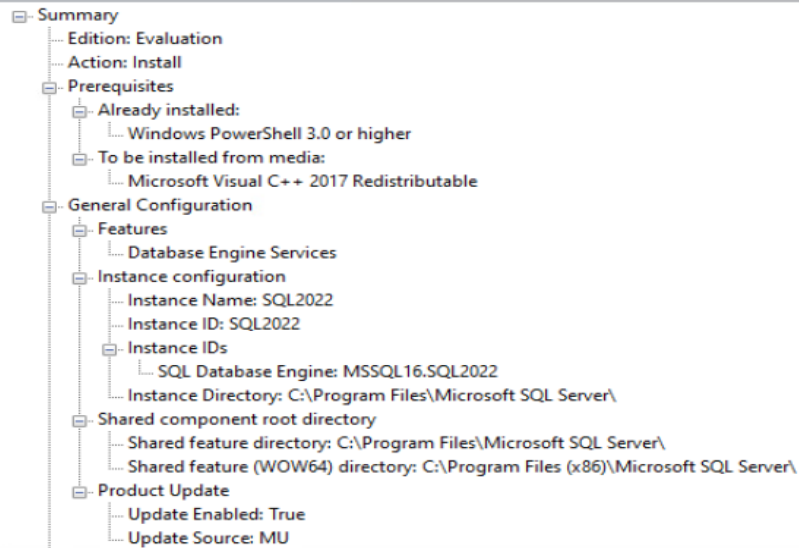
- Microsoft.HybridCompute/machines/extensions/read
- Microsoft.HybridCompute/machines/extensions/write
- Microsoft.HybridCompute/machines/extensions/delete
- Microsoft.HybridCompute/machines/read
- Microsoft.HybridCompute/machines/write
- Microsoft.GuestConfiguration/guestConfigurationAssignments/read
- Microsoft.Authorization/roleAssignments/write
- Microsoft.Authorization/roleAssignments/read

**Ready to Install**

Verify the SQL Server 2022 CTP2.0 features to be installed.

Activation  
License Terms  
Global Rules  
Microsoft Update  
Product Updates  
Install Setup Files  
Install Rules  
Feature Selection  
Feature Rules  
Instance Configuration  
Server Configuration  
Database Engine Configuration  
Feature Configuration Rules  
**Ready to Install**  
Installation Progress  
Complete

Ready to install SQL Server 2022 CTP2.0:



Configuration file path:

C:\Program Files\Microsoft SQL Server\160\Setup Bootstrap\Log\20220527\_080010\ConfigurationFile.ini

&lt; Back

Install

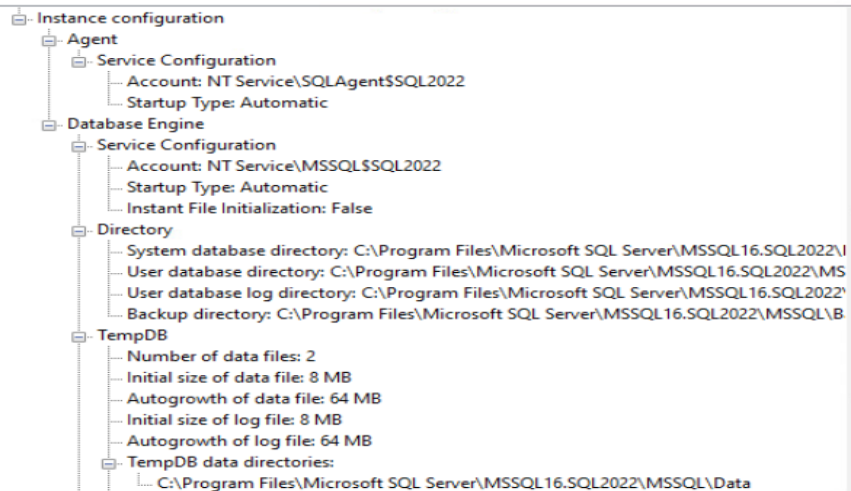
Cancel

**Ready to Install**

Verify the SQL Server 2022 CTP2.0 features to be installed.

Activation  
License Terms  
Global Rules  
Microsoft Update  
Product Updates  
Install Setup Files  
Install Rules  
Feature Selection  
Feature Rules  
Instance Configuration  
Server Configuration  
Database Engine Configuration  
Feature Configuration Rules  
**Ready to Install**  
Installation Progress  
Complete

Ready to install SQL Server 2022 CTP2.0:



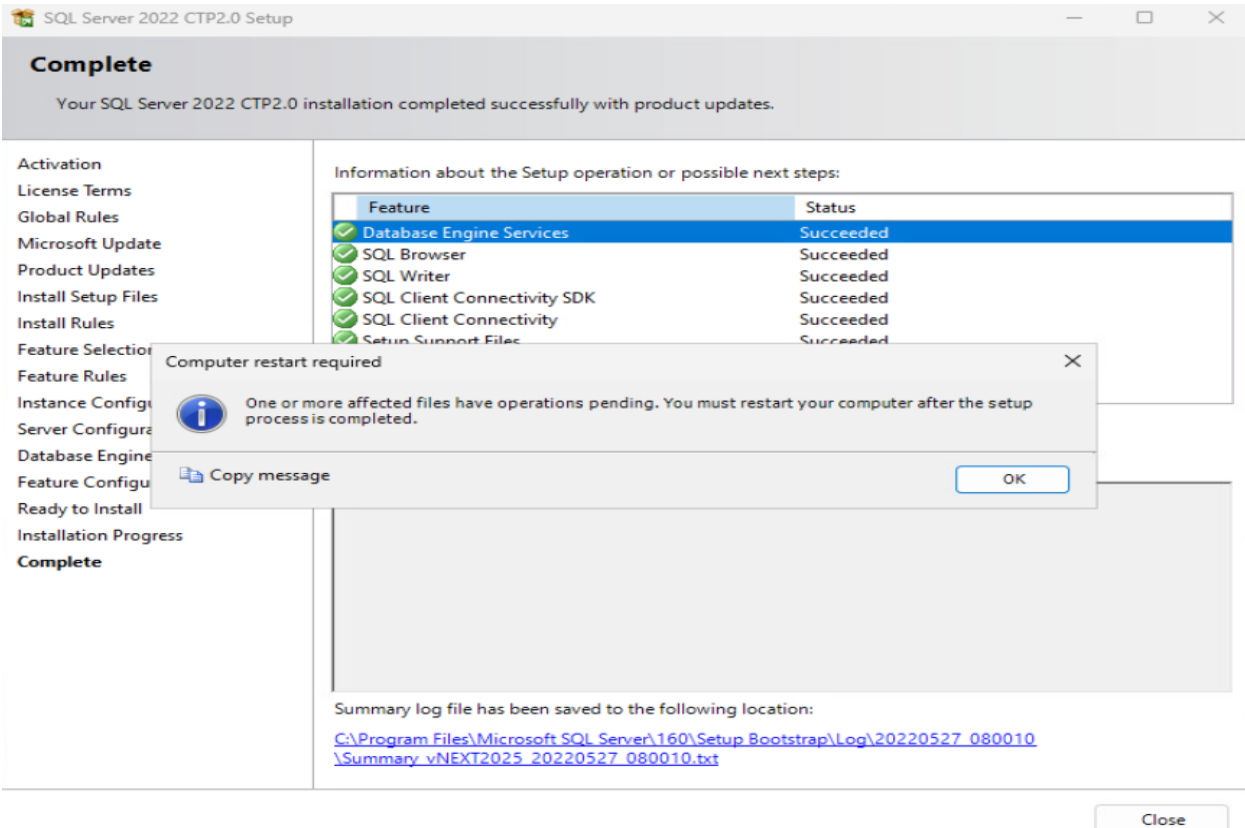
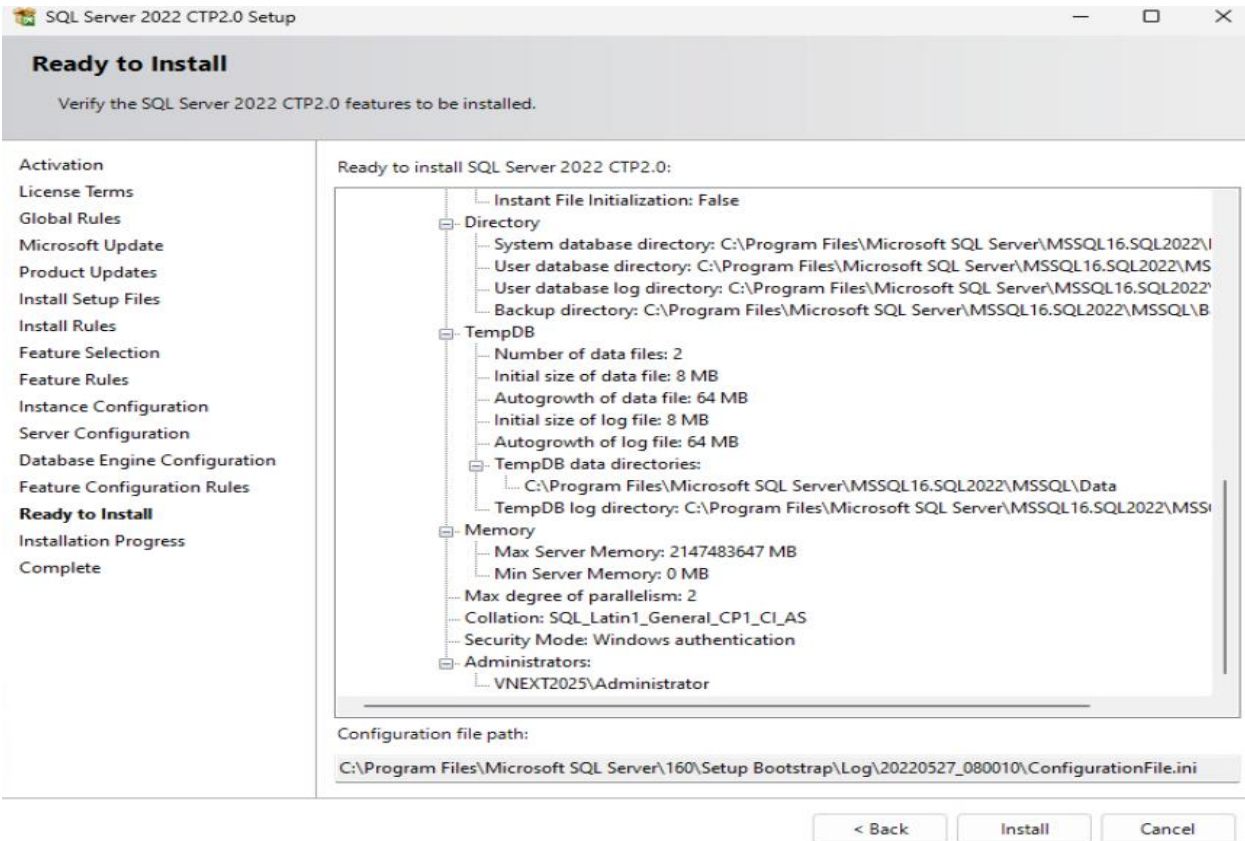
Configuration file path:

C:\Program Files\Microsoft SQL Server\160\Setup Bootstrap\Log\20220527\_080010\ConfigurationFile.ini

&lt; Back

Install

Cancel





RELEASE 18.11.1

## Microsoft SQL Server Management Studio with Azure Data Studio

Welcome. Click "Install" to begin.

Location:

C:\Program Files (x86)\Microsoft SQL Server Management Studio 18

Change

By clicking the "Install" button, I acknowledge that I accept the [Privacy Statement](#) and the License Terms for [SQL Server Management Studio](#) and [Azure Data Studio](#)

SQL Server Management Studio transmits information about your installation experience, as well as other usage and performance data, to Microsoft to help improve the product. To learn more about data processing and privacy controls, and to turn off the collection of this information after installation, see the [documentation](#)

Install

Close



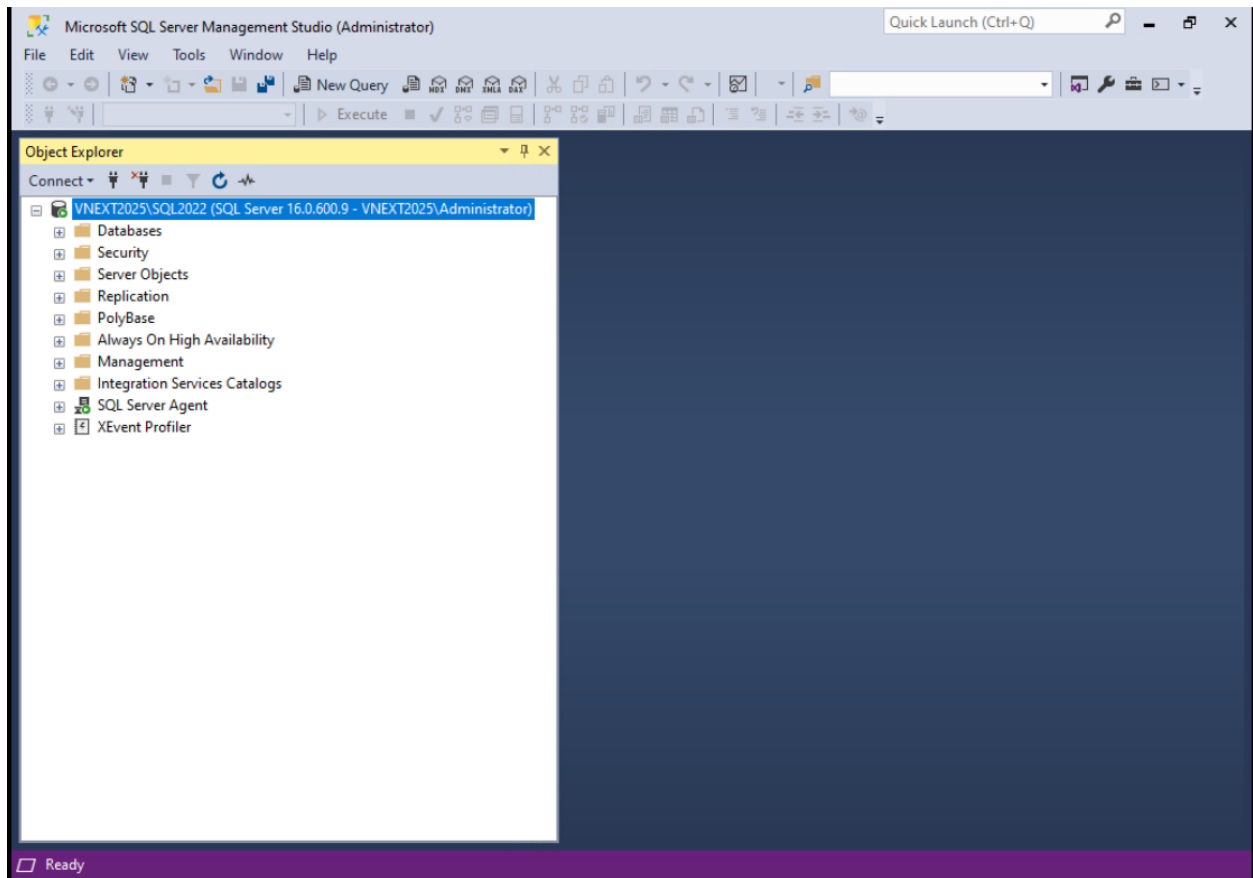
RELEASE 18.11.1

## Microsoft SQL Server Management Studio with Azure Data Studio

### Setup Completed

All specified components have been installed successfully.

Close



I don't see any major changes within SSMS. This concludes the install.

Thanks

**Ram**

**27<sup>th</sup> May 2022**