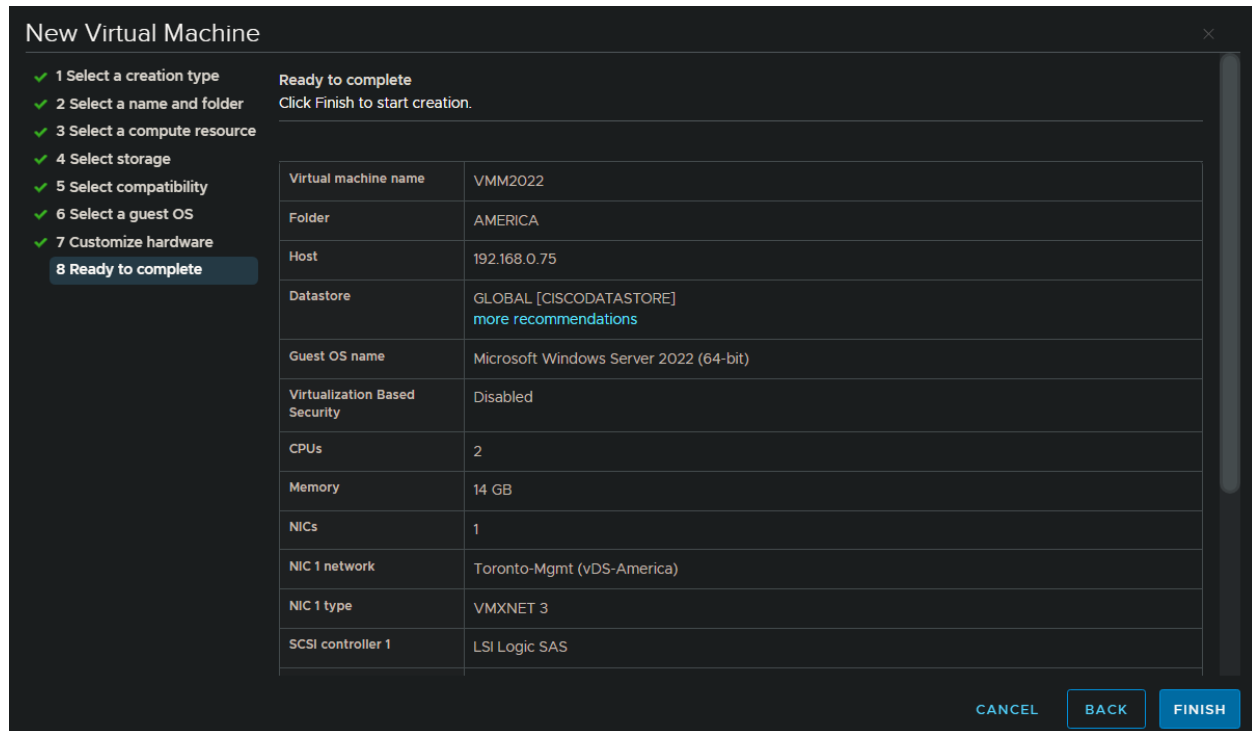
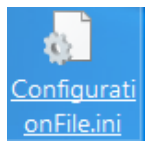


How to Install Virtual Machine Manager 2022 on Windows Server 2022

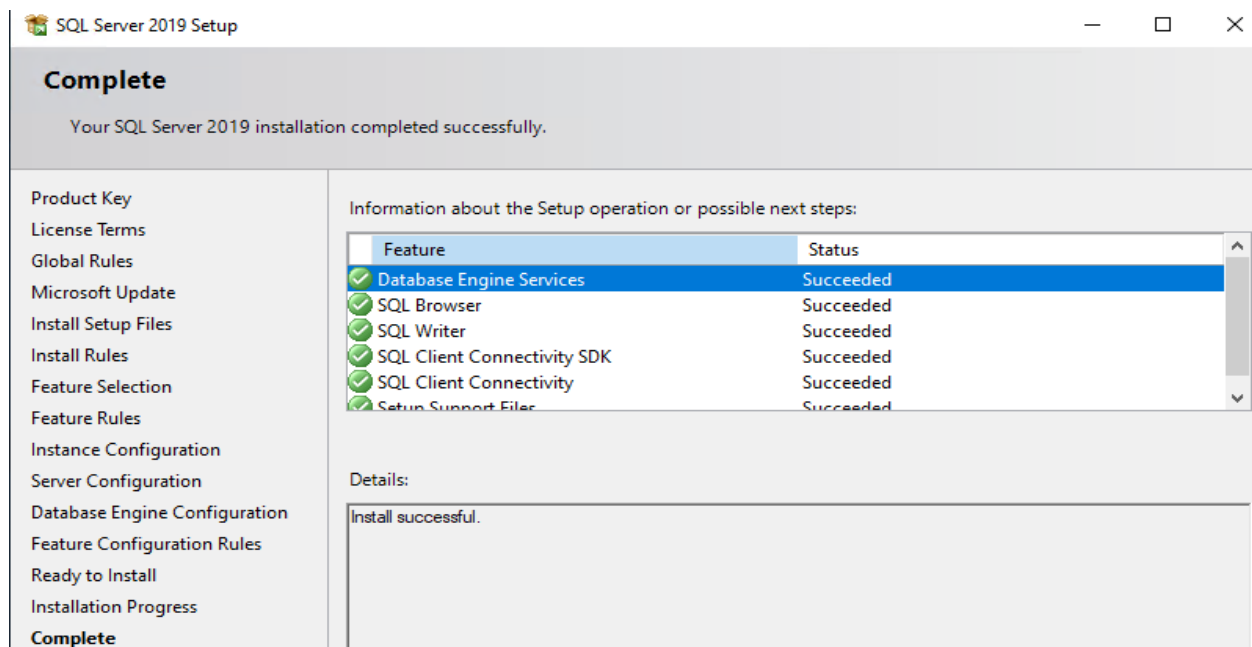
In this post, I am going to install VMM 2022 on Windows Server 2022 with SQL Server 2019. Created a VM on vCenter with the following:



Power on the VM – Install Windows Server 2022 – Install the updates and Restart. I used configurationfile.ini to install SQL Server 2019.

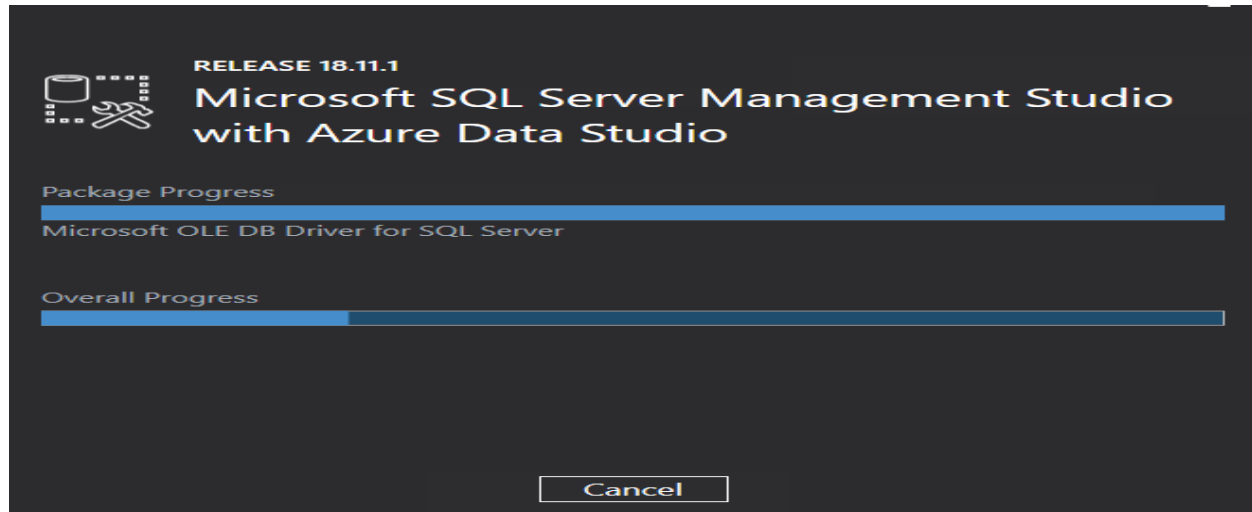


The command is `setup.exe /CONFIGURATIONFILE="C:\ConfigurationFile.ini" /QS /IACCEPTSQLSERVERLICENSETERMS`



```
PS C:\Users\ADMINISTRATOR.RAMLAN> Get-Service *SQL* | FT -AutoSize
Status Name DisplayName
-----
Running MSSQL$VMM2022 SQL Server (VMM2022)
Running SQLAgent$VMM2022 SQL Server Agent (VMM2022)
Running SQLBrowser SQL Server Browser
Running SQLServerReportingServices SQL Server Reporting Services
Running SQLTELEMETRY$VMM2022 SQL Server CEIP service (VMM2022)
Running SQLWriter SQL Server VSS Writer
```

Installed SSMS, SSRS & ADK



Copied Offline ADK installer to perform quiet install.

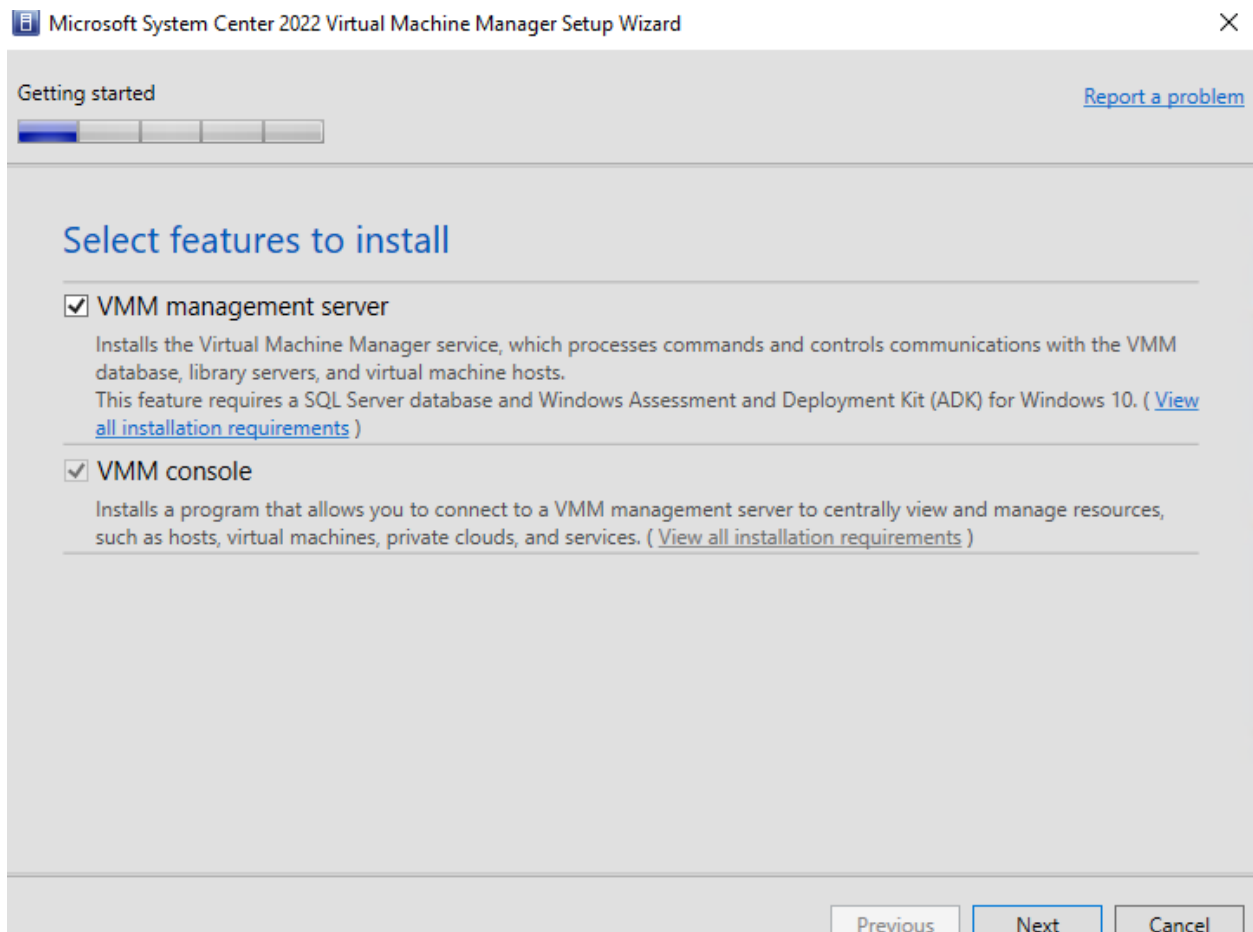
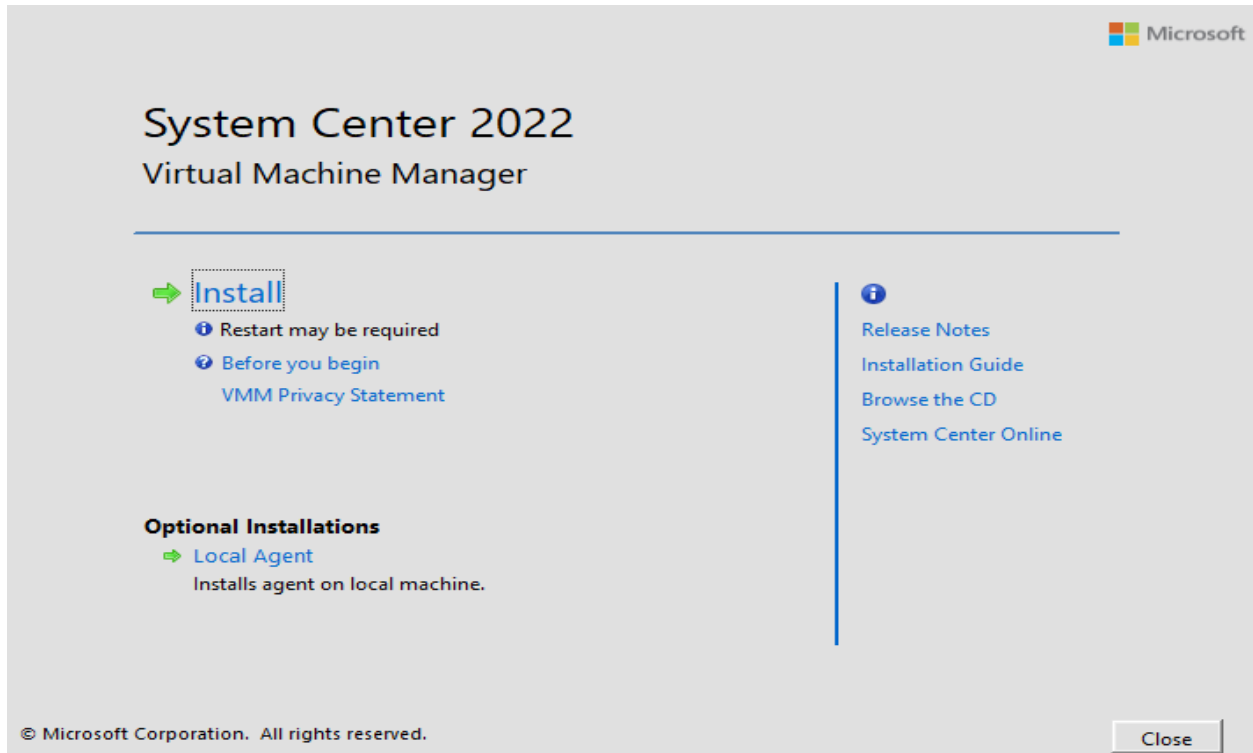
```
C:\Temp\10\ADK>adksetup.exe /quiet /installpath C:\ADK /features OptionId.DeploymentTools
C:\Temp\10\ADK>cd..
C:\Temp\10>cd ADKwinPEAddons
C:\Temp\10\ADKwinPEAddons>dir
Volume in drive C has no label.
Volume Serial Number is 348C-6203

Directory of C:\Temp\10\ADKwinPEAddons

13-May-2022 01:15 PM <DIR> .
13-May-2022 01:17 PM <DIR> ..
20-Apr-2022 04:45 PM 1,592,800 adkwinpesetup.exe
13-May-2022 01:16 PM <DIR> Installers
20-Apr-2022 05:14 PM 7,172 UserExperienceManifest.xml
2 File(s) 1,599,972 bytes
3 Dir(s) 127,979,540,480 bytes free

C:\Temp\10\ADKwinPEAddons>adkwinpesetup.exe /quiet /installpath C:\ADK /features OptionId.WindowsPreinstallationEnvironment /forcerestart
```

Now we are ready to install VMM2022. Run setup.exe



Getting started

[Report a problem](#)

Microsoft Update

Microsoft Update offers security and important updates for Windows and other Microsoft software, including System Center 2022 Virtual Machine Manager. Updates are delivered using Automatic Updates, or you can visit the Microsoft Update website.

- On (recommended)**
Use Microsoft Update to check for updates.
- Off**
Do not automatically check for updates.

[Microsoft Update FAQ](#)

[Microsoft Update Privacy Statement](#)

Previous

Next

Cancel

Getting started

[Report a problem](#)

Installation location

The recommended location for program files is displayed.

Location:

Browse...

Free space 119.80 GB

Previous

Next


Cancel

Prerequisites

[Report a problem](#)

Please review these prerequisite warnings

Setup can continue but this computer does not meet recommended system requirements, which can affect system performance.

Problem	Prerequisite	Affected Feature
 Memory Check	Insufficient computer memory was found. The recommended memory configuration for the VMM management server is 16000 megabytes (MB). This computer has only 14335 MB of memory. To remedy this condition, install more memory in this computer.	Management Server

[Review full system requirements](#)

Check prerequisites again

Previous

Next

Cancel

Database configuration

Provide information about the database that you would like to use for your VMM management server.

Server name:

Port:

Use the following credentials

User name:

Format: Domain\UserName

Password:

Instance name:

Select an existing database or create a new database.

New database:

Existing database:

Configure service account and distributed key management

Virtual Machine Manager Service Account

Select the account to be used by the VMM service. Highly available VMM installations require the use of a domain account.

[Which type of account should I use?](#)

Local System account

Domain account

User name and domain:

Password:

Group Managed Service Account

User name and domain:

Distributed Key Management

Select whether to store encryption keys in Active Directory instead of on the local machine. Highly available VMM installations require the keys be stored in Active Directory.

Store my keys in Active Directory

Provide the location in Active Directory. For example, CN=DKM,DC=contoso,DC=com.

[How do I configure distributed key management?](#)

Port configuration

Management Server

Please select the ports for various VMM features.

- | | |
|-----------------------------------|--|
| <input type="text" value="8100"/> | Communication with the VMM console |
| <input type="text" value="5985"/> | Communication to agents on hosts and library servers |
| <input type="text" value="443"/> | File transfers to agents on hosts and library servers |
| <input type="text" value="8102"/> | Communication with Windows Deployment Services |
| <input type="text" value="8101"/> | Communication with Windows Preinstallation Environment (Windows PE) agents |
| <input type="text" value="8103"/> | Communication with Windows PE agent for time synchronization |

[Previous](#)[Next](#)[Cancel](#)

Library configuration

Specify a share for the Virtual Machine Manager library

- Create a new library share

Share name:

Share location:

[Select...](#)

Share description:

- Use an existing library share

Share name:

Share location:

Share description:

[Previous](#)[Next](#)[Cancel](#)

Configuration

[Report a problem](#)

Installation summary

Review the selections for features you are installing. To continue, click Install. To change these selections, click Previous.

Features selected to be added

VMM management server

VMM console

Installation Location

C:\Program Files\Microsoft System Center\Virtual Machine Manager

Database Information

VirtualManagerDB database will be created on VMM2022\VMM2022

Service Account

RAMLAN\ram

Communication Ports

8100 - Communication with the VMM console

5985 - Communication to agents on hosts and library servers

443 - File transfers to agents on hosts and library servers

8102 - Communication with Windows Deployment Services

8101 - Communication with Windows Preinstallation Environment (Windows PE) agents

Microsoft System Center 2022 Virtual Machine Manager Setup Wizard

Configuration

[Report a problem](#)

Installation summary

Review the selections for features you are installing. To continue, click Install. To change these selections, click Previous.

Database Information

VirtualManagerDB database will be created on VMM2022\VMM2022

Service Account

RAMLAN\ram

Communication Ports

8100 - Communication with the VMM console

5985 - Communication to agents on hosts and library servers

443 - File transfers to agents on hosts and library servers

8102 - Communication with Windows Deployment Services

8101 - Communication with Windows Preinstallation Environment (Windows PE) agents

8103 - Communication with Windows PE agent for time synchronization

Library Share Name and Location

MSSCVMMLibrary

C:\ProgramData\Virtual Machine Manager Library Files

Using Microsoft Update

Yes

Previous

Install

Cancel

Complete

[Report a problem](#)

Setup completed successfully

For detailed information, review the Setup log files that are located in the %SYSTEMDRIVE%\ProgramData\VMMLogs folder. Note that the ProgramData folder is a hidden folder.

- ✔ VMM management server
- ✔ VMM console



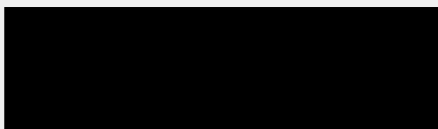
- [Release Notes](#)
- [Installation Guide](#)
- [Read Documentation](#)
- [System Center Online](#)

- Check for the latest Virtual Machine Manager updates
- Open the VMM console when this wizard closes

Close



System Center 2022 Virtual Machine Manager



Navigation bar with icons for: Create Service, Create Virtual Machine, Create Cloud, Create Host Group, Create VM Network, Assign Cloud Cloud, Overview, VMs (Show), Services, VM Networks, Select Tenant, Clear Filter, Tenant Filter, PowerShell, Jobs, PRO, Window.

VMs and Services

- Tenants
- Clouds
- Azure Subscriptions
- VM Networks
- Storage
- All Hosts

VMs and Services

- Fabric
- Library
- Jobs
- Settings

ADDING PXE SERVER – Go to Fabric – Right Click PXE Server – Add

Jobs

Recent Jobs (1)

Name	Status	Start Time	Result Name	Owner
Setup a new PXE server	Completed	13-May-2022 2:49:17 PM	cb.ramlan.ca	RAMLAN\Administrator

Setup a new PXE server

Status: Completed
 Command: Add-SCPXEserver
 Result name: cb.ramlan.ca
 Started: 13-May-2022 2:49:17 PM
 Duration: 00:03:04
 Owner: RAMLAN\Administrator

Property	Previous Value	New Value

Summary | Details | Change Tracking

Show this window when new objects are created

Restart Cancel

ADDING UPDATE SERVER - Go to Fabric – Right Click Update Server – Add

Jobs

Recent Jobs (18)

Name	Status	Start Time	Result Name	Owner
Add Update Server	Completed	13-May-2022 3:30:09 PM	cb.ramlan.ca	RAMLAN\Administrator
Add Update Server	Failed	13-May-2022 3:29:27 PM	cb.ramlan.ca	RAMLAN\Administrator
Add virtual machine host	Completed w/ Info	13-May-2022 3:18:59 PM	DC.RAMLAN.CA	RAMLAN\Administrator
Refresh virtualization manager	Completed	13-May-2022 3:13:12 PM	vcd.ramlan.ca	RAMLAN\Administrator
Create new RunAs Account	Completed	13-May-2022 3:08:39 PM	ESX	RAMLAN\Administrator
Add infrastructure server	Failed	13-May-2022 3:07:20 PM	Job Failed	RAMLAN\Administrator
Add virtual machine host	Completed w/ Info	13-May-2022 3:05:04 PM	cb.ramlan.ca	RAMLAN\Administrator
Create new RunAs Account	Completed	13-May-2022 3:04:12 PM	HYPERV	RAMLAN\Administrator
Refresh virtualization manager	Completed	13-May-2022 3:02:20 PM	vcpd.ramlan.ca	RAMLAN\Administrator

Add Update Server

Step	Name	Status	Start Time	End Time
1	Add Update Server	Failed	13-May-2022 3:29:27 PM	13-May-2022 3:29:29 PM
1.1	Install Virtual Machine Manager agent	Completed	13-May-2022 3:29:27 PM	13-May-2022 3:29:27 PM
1.2	Synchronize Update Server	Not started		

Summary | Details | Change Tracking

Show this window when new objects are created

Restart Cancel

ADDING VCENTER - Go to Fabric – Right Click vCenter Server – Add – Do the same to add ESXi Host

Status: Completed
 Command: Add-SCVirtualizationManager
 Result name: vcpd.ramlan.ca
 Started: 13-May-2022 2:55:29 PM
 Duration: 00:00:04
 Owner: RAMLAN\Administrator

Property	Previous Value	New Value
Managed Computer - vcpd.ramlan.ca		
Name	(none)	vcpd.ramlan.ca
Agent version	(none)	0.0
Status	(none)	Responding
Agent version status	(none)	Not Applicable
Host - vcpd.ramlan.ca		
Name	(none)	vcpd.ramlan.ca
Enable VMRC	(none)	False
VMRC port number	(none)	0
Is perimeter network host	(none)	False
Host user name	(none)	localhost\administrator@vsphere.local
Operating system version	0.0	7.0.3
Virtual Server status	(none)	Unknown
Virtual Server version	(none)	0.0
CPU percentage reserve	(none)	10
Network percentage reserve	(none)	0
Disk space reserve in MB	(none)	10240
Memory space reserve in MB	(none)	2048
Maximum disk I/O per second	(none)	10000
Use CA certificate	(none)	False
Is non-trusted domain host	(none)	False
Operating system name	(none)	VMware vCenter Server 7.0.3 build-19480866(inlinux-x64)
Secure Mode	(none)	True
SSL TCP Port number	(none)	443

Status: Completed
 Command: Add-SCVirtualizationManager
 Result name: vcdr.ramlan.ca
 Started: 13-May-2022 2:57:01 PM
 Duration: 00:00:01
 Owner: RAMLAN\Administrator

Property	Previous Value	New Value
Host - vcdr.ramlan.ca		
Name	(none)	vcdr.ramlan.ca
Enable VMRC	(none)	False
VMRC port number	(none)	0
Is perimeter network host	(none)	False
Host user name	(none)	localhost\administrator@vsphere.local
Operating system version	0.0	7.0.3
Virtual Server status	(none)	Unknown
Virtual Server version	(none)	0.0
CPU percentage reserve	(none)	10
Network percentage reserve	(none)	0
Disk space reserve in MB	(none)	10240
Memory space reserve in MB	(none)	2048
Maximum disk I/O per second	(none)	10000
Use CA certificate	(none)	False
Is non-trusted domain host	(none)	False
Operating system name	(none)	VMware vCenter Server 7.0.3 build-19480866(linux-x64)
Secure Mode	(none)	True
SSL TCP Port number	(none)	443
SSH TCP Port number	(none)	0
Flags	(none)	None
Host Group Reserve Override Preference	(none)	False
Attestation state	(none)	0
Is quarred	(none)	False

With this we have completed basic configuration for VMM2022. There is a lot more to do. In the next blog, I will cover the rest.

Thanks

Ram
14th May 2022

```
adksetup.exe /quiet /installpath C:\ADK /features OptionId.DeploymentTools
```

```
adkwinpesetup.exe /quiet /installpath C:\ADK /features OptionId.WindowsPreinstallationEnvironment /forcerestart
```