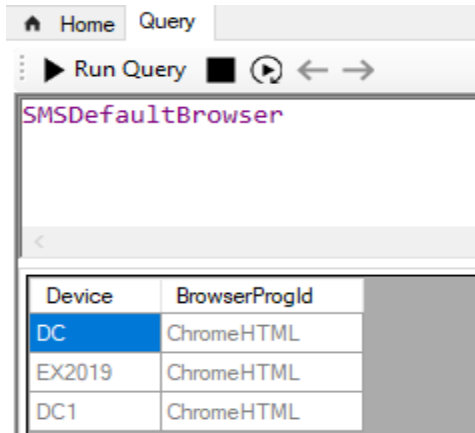
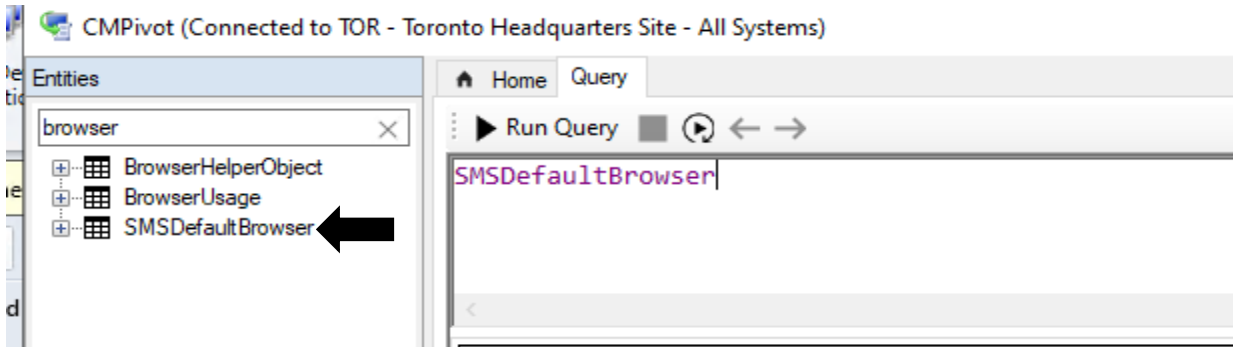
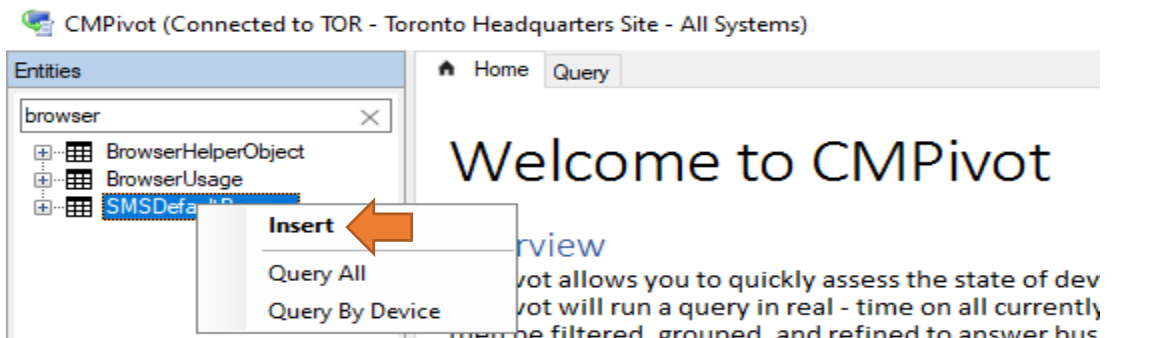
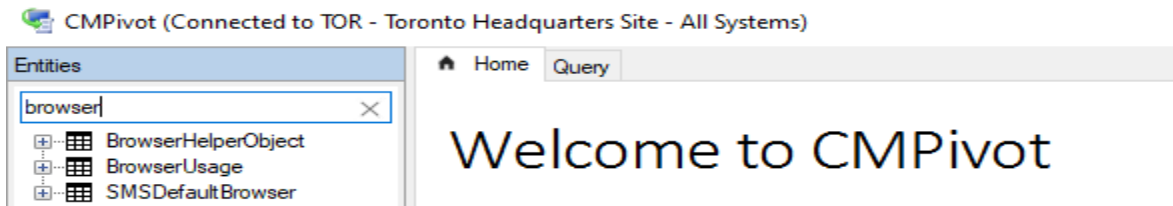


How to find Default Browser within your network

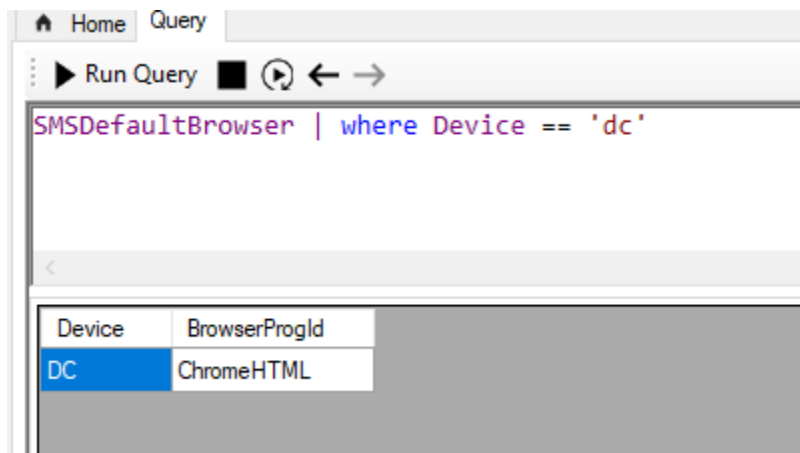
Many companies use different browser within the network. If you ever need to find the default browser you can run CMPivot query with CB2111. The details are as follows:

Go to Device Collections – All systems



If you want to find for a specific computer then run this command

`SMSDefaultBrowser | where Device == 'computername'`



This is pretty useful and easy to use through CMPivot.

Thanks

Ram

3rd Apr 2022