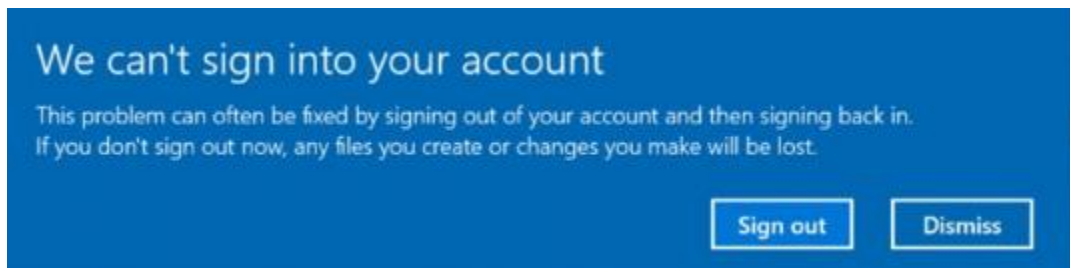



User login - TEMPORARY profile issue

I was working on a project where I was getting below error when user logged into the new laptop. The OS was not creating user profile. It was always temporary profile which disappears after logoff. Tried many fixes posted on Google but none worked for me. It was a horrible experience not able to resolve the issue.

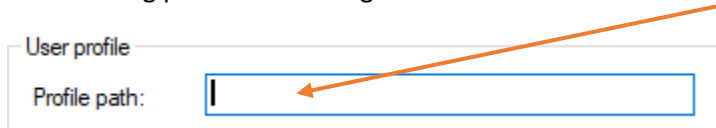
Finally, I was looking at the event viewer log to see what kind of errors were reported. There were lot of events 1511 and 1521 errors which reported user roaming and local profiles ACCESS DENIED. Reached out to IT Manager to find out if Roaming profile were used within their network. Unfortunately, the user I was working had roaming profile configured in ADUC. After removing roaming profile, the initial login worked and there were no more temporary profile and no more below error. In the end, I was able to complete the refresh.



Windows -User Profiles Service Event 1511:
Windows cannot find the local profile and is logging you on with a temporary profile.

User roaming profile error - Access denied with event ID 1521 

The roaming profile was configured here in ADUC. After removing profile path the login worked.



Hope this might help others if they had similar issue.

Thanks

Ram
2nd Mar 2022