

How to setup Local KMS within Home Lab

I was using local KMS on Windows Server 2016 few years ago. After moving to Windows Server 2019, I did not try setting up local KMS within the lab. Now, it is time to complete the setup. Here are the details.

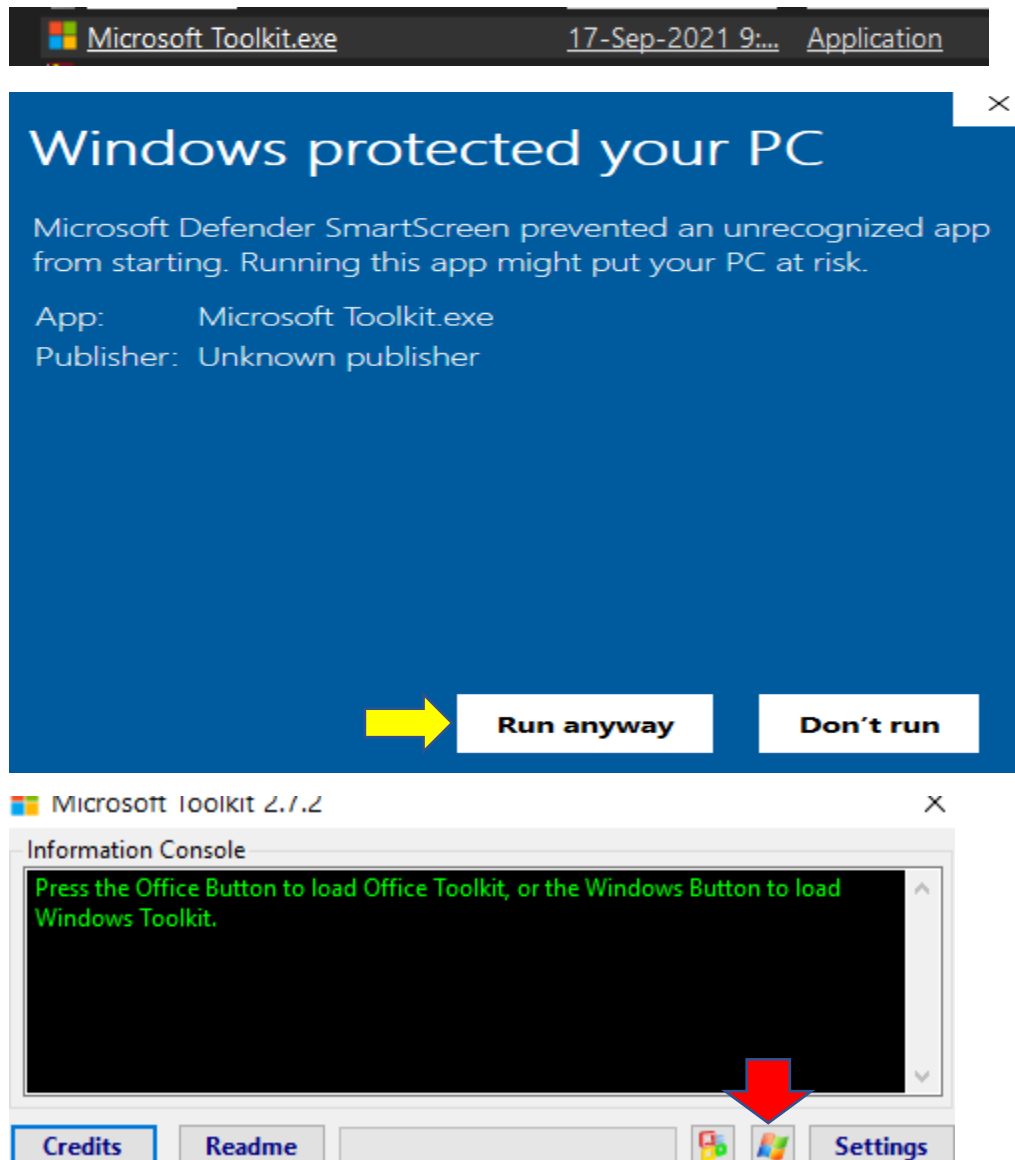
1. You will need MKT v.2.7.2
2. Install KMS Server Service using MTK v2.7.2 on a server you will be using it as KMS Server
3. Create DNS Entry
4. Enable Port Forwarding for port 1688 on your Router/Modem

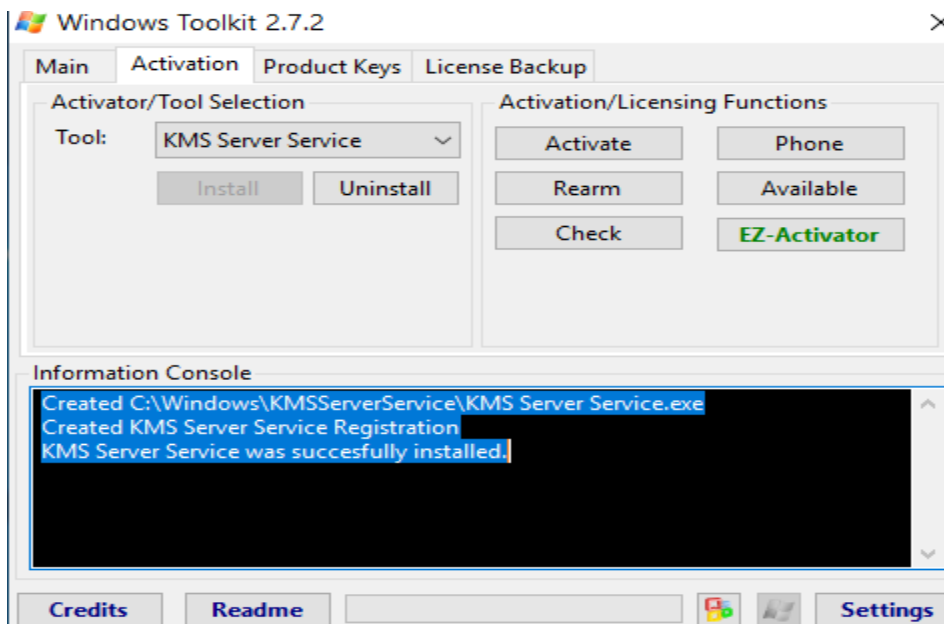
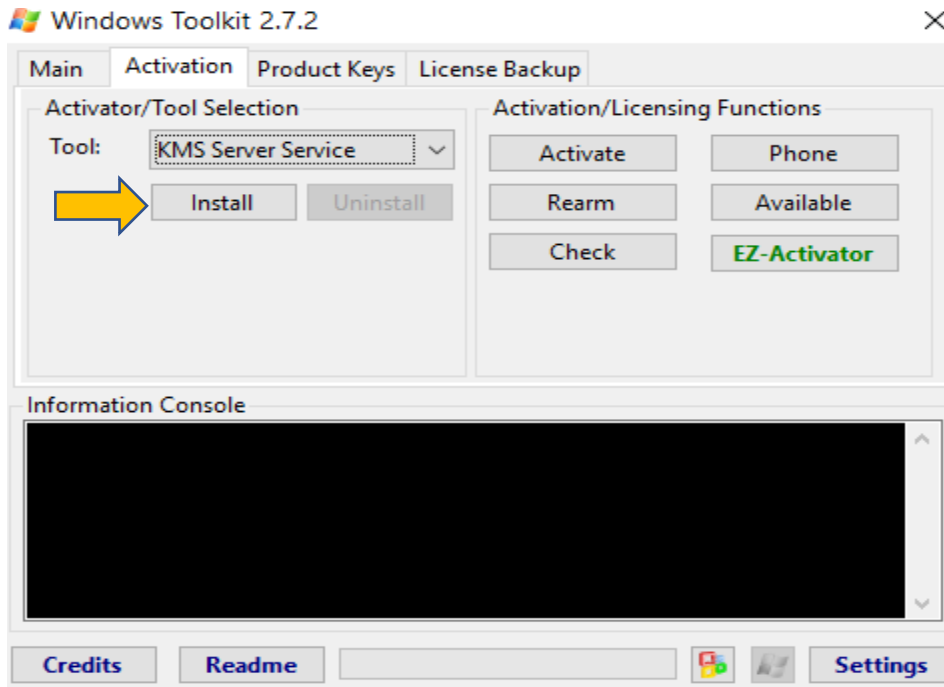
Once you complete above steps any client/server/office system will be activated automatically.

You can download MTK 2.7.2 from this link -

<https://drive.google.com/uc?export=download&id=1OYZfFRUGp1wR9YIQDO65JCZIIY5Zgey8>

I am installing on Windows Server 2019. Open MTK 2.7.2 to install KMS Server Service.





From the task manager you can see KMS Server Service is running.

Task Manager

File Options View

Processes Performance Users Details Services				
Name	PID	Description	Status	
Kdc	1256	Kerberos Key Distribution Center	Running	
KdsSvc		Microsoft Key Distribution Service	Stopped	
KeyIso	1256	CNG Key Isolation	Running	
Kiwi Syslog Server	18044	Kiwi Syslog Server	Running	
KMS Server Service	59908	KMS Server Service	Running	

Now time to create DNS entry – follow the instruction below

Open the DNS Microsoft Management Console (MMC).

Right-click on the `_tcp` folder and select Other New Records.

Select Service Location (SRV) as the new record type.

Fill in the following information for the new record:

Service: `_VLMCS`

(Note: This is not in the drop-down list, so you'll need to type it in.

Be sure to include the underscore at the beginning.)

Protocol: `_tcp`

(Note: Select this from the drop-down list.)

Port: 1688

Priority: 10

Host offering the service: hostname

_VLMCS Properties ? X

Service Location (SRV) Security

Domain: [Redacted]

Service: `_VLMCS`

Protocol: `_tcp`

Priority: 10

Weight: 0

Port number: 1688

Host offering this service: [Redacted]

OK Cancel Apply Help

Login to your Router/Modem to configure port forwarding. I am using TP-LINK Router.

TP-LINK

Add or Modify a Virtual Server Entry

Service Port: 1688 (XX-XX or XX)

Internal Port: (XX, Enter a specific port number or leave it blank)

IP Address: 192.

Protocol: All

Status: Enabled

Common Service Port: --Select One--

Save Back

Now you have a local KMS Server running within the lab.

Thanks

Ram

11th Nov 2021