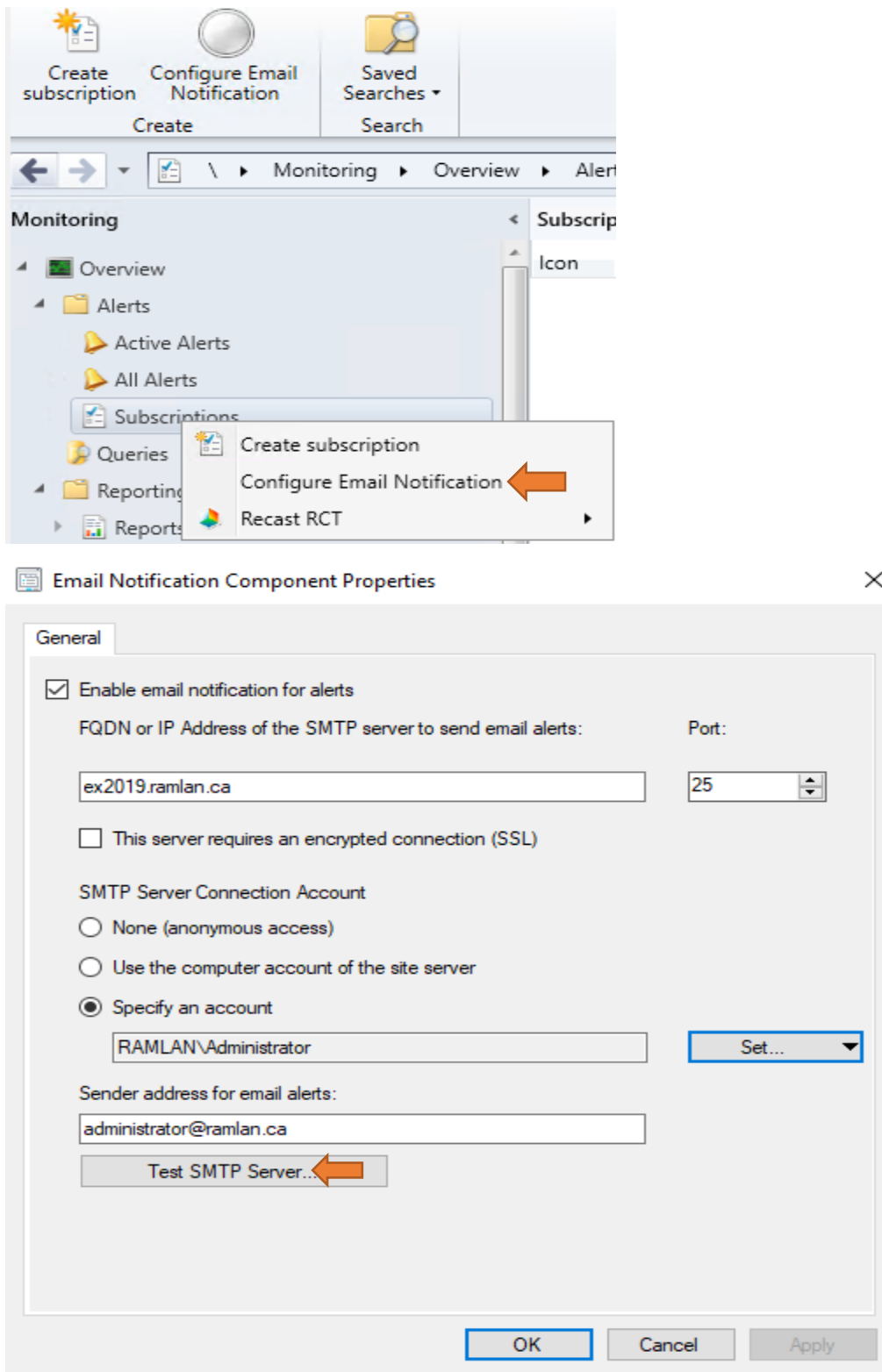
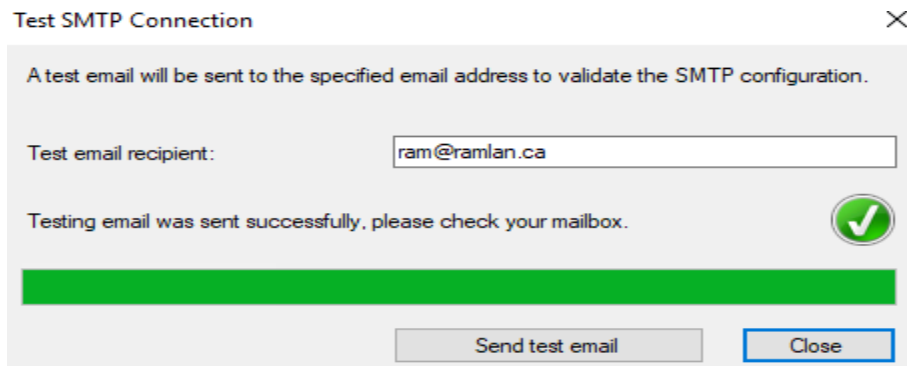
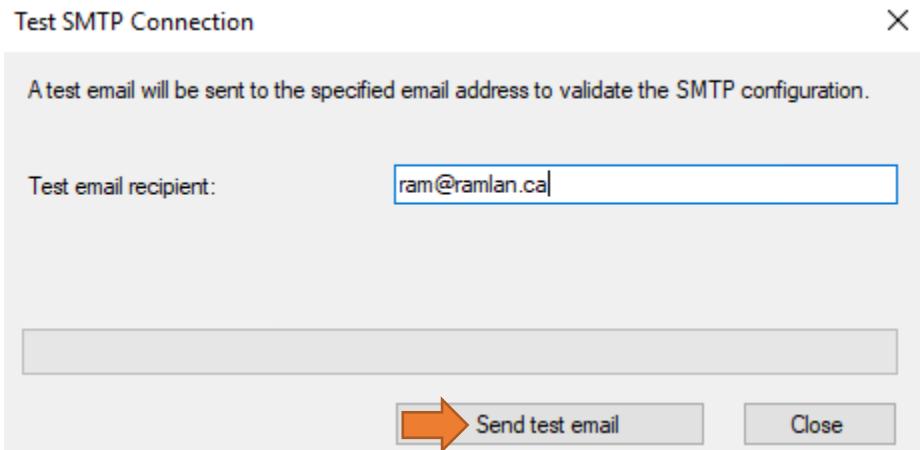


Configuring email notification for alerts and reports

In this post, I will show you how to configure email notification for alerts and reports within scdm console.





Now go into active alerts and create a subscription. For this example, I am using one of the alerts that, I created for Exchange Server 2019.

Monitoring > Overview > Alerts > Active Alerts

Active Alerts 1 items						
Icon	Severity	Alert State	Name	Type	Alert State Modified	
	Critical	Active	HAFNIUM Exchange 2019_EX2019	Configuration baseline compliance	25-Mar-2021 3:35 AM	

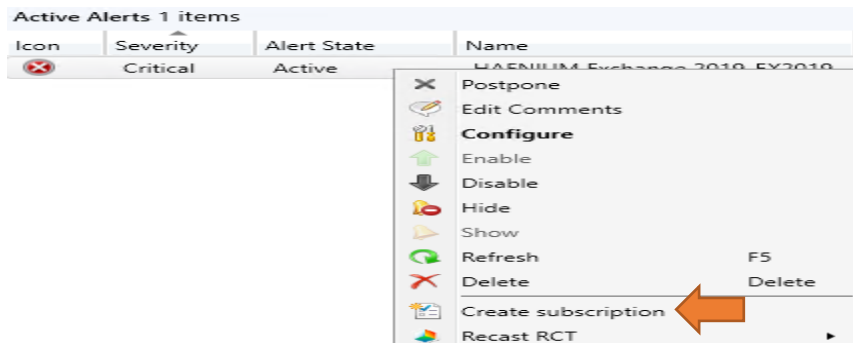
HAFNIUM Exchange 2019_EX2019

General Information

Name: HAFNIUM Exchange 2019_EX2019
 Type: Configuration baseline compliance
 Feature Area: Compliance settings
 Severity: Critical
 Condition: Generate an alert if the compliance for the "HAFNIUM Exchange 2019-EX2019" baseline deployment is below the following percent: 90%. The alert is canceled if the compliance level is equal to or greater than 90%.
 Alert Text: Compliance for baseline deployment "HAFNIUM Exchange 2019-EX2019" is 0%, below the threshold of 90%
 Status: Enabled
 Comment:

Status information

Alert State: Active
 Postpone Alert: 25-Mar-2021 4:35 AM
 Date Created: 22-Mar-2021 12:52 PM
 Closed By: RAMLANAdministrator
 Date Modified: 25-Mar-2021 3:35 AM
 Modified By: RAMLANAdministrator
 Occurrence Count: 1



New Subscription [Close]

Specify a name, one or more email addresses and a selected language for this subscription. You can separate multiple email addresses with a semicolon (;).

Subscription name:

Email address:

Email language:

We will get email alert when the alert run as per the schedule.

You can also create same alert within SSRS.

Report Server Configuration Manager

Report Server Configuration Manager

Connect

- Server
- Service Account
- Web Service URL
- Database
- Web Portal URL
- E-mail Settings
- Execution Account
- Encryption Keys
- Subscription Settings

The Report Server Configuration Connection [Close]

Report Server Connection

Please specify a server name, click the Find button, and select a report server instance to configure.

Server Name:

Report Server Instance:

Report Server Configuration Manager: CB\SSRS

Report Server Configuration Manager

Connect

- CB\SSRS
- Service Account
- Web Service URL
- Database
- Web Portal URL
- E-mail Settings**
- Execution Account
- Encryption Keys
- Subscription Settings
- Scale-out Deployment
- Power BI Service (cloud)

E-mail Settings

To use report server e-mail, specify an existing SMTP server and an e-mail account that can send e-mail from that server.

SMTP Settings

To edit, change the fields and click the Apply button.

Sender Address:

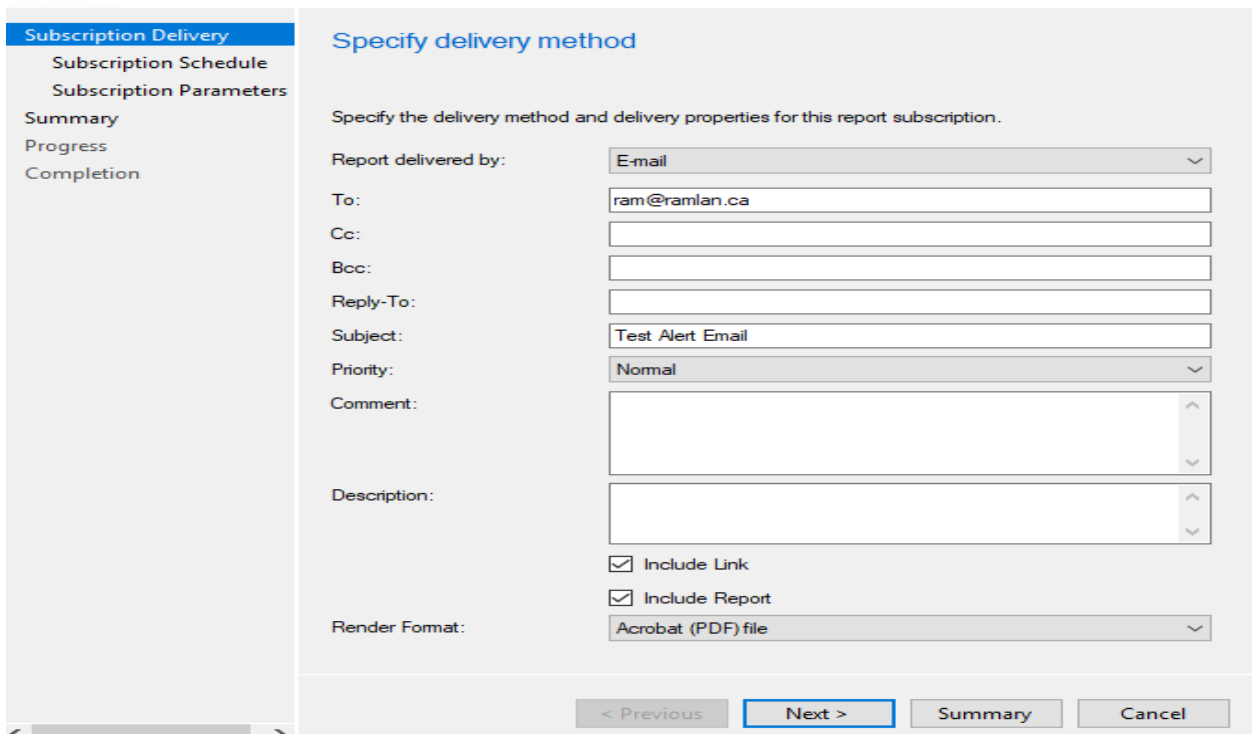
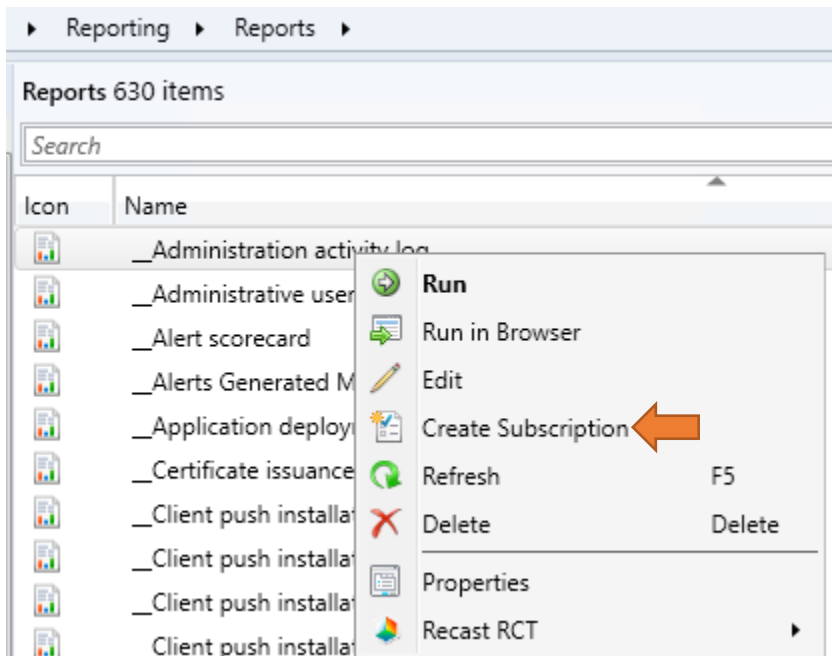
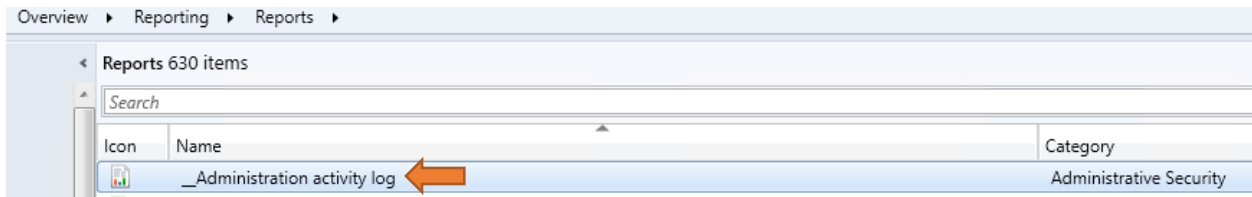
Current SMTP Delivery Method:

SMTP Server:

Authentication:

Results

Go into Reports and create a subscription. For this test, I am using Administration activity log report.



Create Subscription Wizard

Subscription Schedule

Subscription Delivery

Subscription Schedule

Subscription Parameters

Summary

Progress

Completion

Specify delivery schedule

Specify the delivery schedule for this report subscription.

Use shared schedule:

Create new schedule:

Hourly

Daily

Weekly

Monthly

Once

Report runs only once.


Start and end dates (SRS Server local time)

Start time: 01:29 AM

Begin on: 27-Mar-2021

Stop on: 26-Mar-2021

< Previous **Next >** Summary Cancel



Create Subscription Wizard

Subscription Parameters

Subscription Delivery

Subscription Schedule

Subscription Parameters

Summary

Progress

Completion

Specify report parameters


Specify the report parameters to use with this subscription:

Administrative user: RAMLAN\Administrator [Values...](#)

Type: Security Role [Values...](#)

Date Range: During the last 30 days [Values...](#)

< Previous Next > Summary Cancel





Summary

- Subscription Delivery
- Subscription Schedule
- Subscription Parameters

Summary

- Progress
- Completion

The subscription will be created using these settings.

Details:

Email Delivery Settings

- To: ram@ramlan.ca
- Subject: Test Alert Email
- Include Report: True
- Render Format: Acrobat (PDF) file
- Include Link: True
- Priority: Normal

Report runs only once.

Start and end dates (SRS Server local time)

- Begin on: 27-Mar-2021
- Start time: 01:29 AM

Parameter values:

- Administrative user = RAMLAN\Administrator
- Type = 1
- Date Range = 2

To change these settings, click Previous. To apply the settings, click Next.

- < Previous
- Next >
- Summary
- Cancel



Completion

- Subscription Delivery
- Subscription Schedule
- Subscription Parameters

Summary

- Progress
- Completion

 The Create Subscription Wizard completed successfully

Details:

Email Delivery Settings

- To: ram@ramlan.ca
- Subject: Test Alert Email
- Include Report: True
- Render Format: Acrobat (PDF) file
- Include Link: True
- Priority: Normal

Report runs only once.


Start and end dates (SRS Server local time)

- Begin on: 27-Mar-2021
- Start time: 01:29 AM

Parameter values:

- Administrative user = RAMLAN\Administrator
- Type = 1
- Date Range = 2

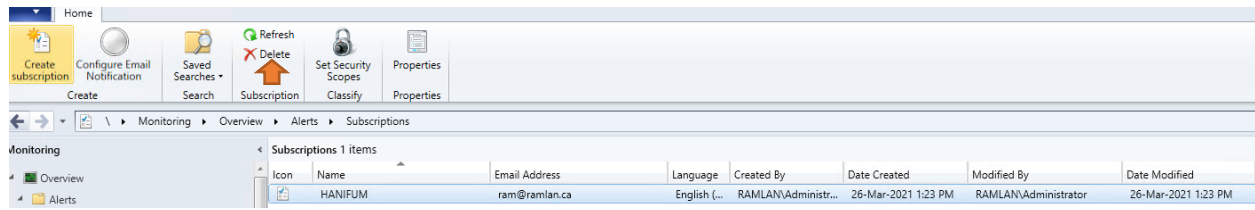
Save Subscription

-  Success: Save subscription to server

To exit the wizard, click Close.

- < Previous
- Next >
- Summary
- Close

If you want to delete the subscription you can do that we well.



Now you know how to create email notification and email subscription.

Thanks

Ram Lan
26th Mar 2021