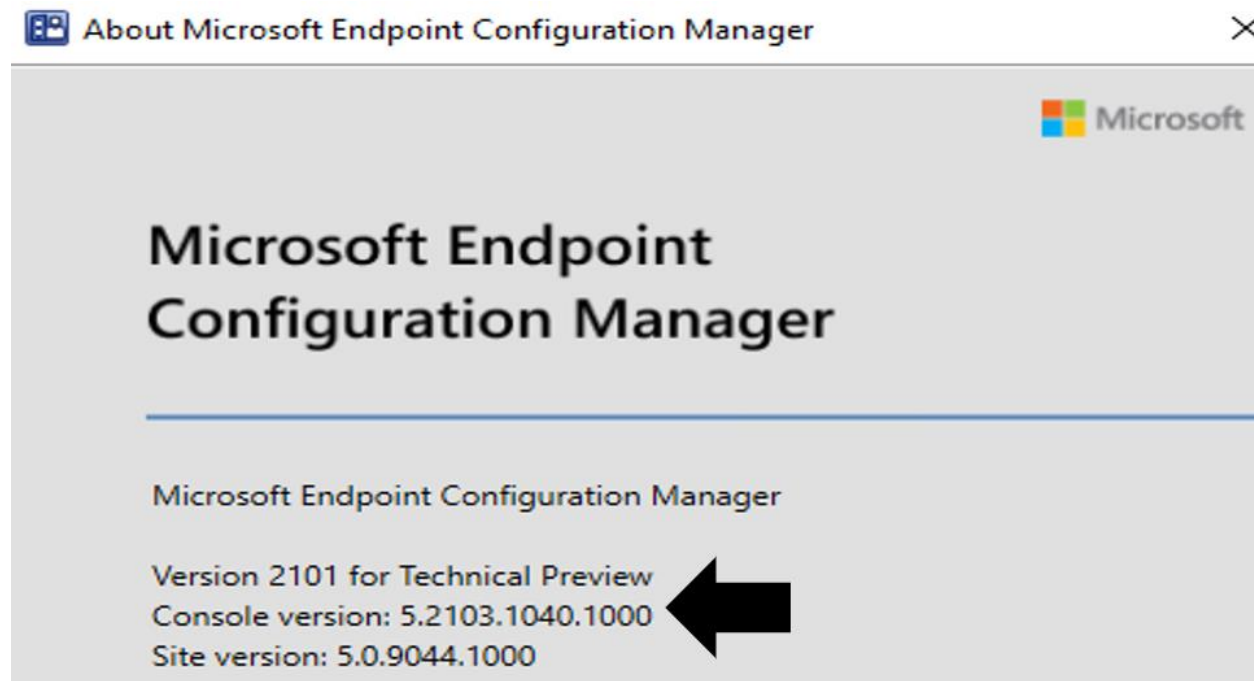


Installing Technical Preview 2102

In this post, I will show you how to install TP2102 and explore new features. I am currently running TP2101. Will complete the upgrade from the console.

Below are the links to TP2102 documentation. Microsoft has not released the new docs for this release. Will have to wait for it...

<https://techcommunity.microsoft.com/t5/configuration-manager-blog/add-reports-as-favorites-in-configuration-manager-technical/ba-p/2150676>



Just clicked check for updates and it is ready to download / install TP2102

Updates and Servicing 0 items							
Search							
Name	Date Released	State	Prereq Only	Ignore Prereq Warning	Full Version	Client Version	Last Update Time
Configuration Manager Technical Preview 2102	19-Feb-2021 12:00 PM	Downloading	No	No	5.00.9045.1000	5.00.9045.1001	22-Feb-2021 4:32 PM
<div><div>Search</div><div>Install Update Pack</div><div>Run prerequisite check</div><div>Retry installation</div><div>Ignore prerequisite warnings</div><div>Promote Pre-production Client</div><div>Report update error to Microsoft</div><div>Download</div><div>Download</div></div>							
ew Updates and Servicing							
Updates and Servicing 2 items							
Search							
Name	Date Released	State	Prereq Only	Ignore Prereq Warning	Full Version	Client Version	Last Update Time
Configuration Manager Technical Preview 2102	19-Feb-2021 12:00 PM	Ready to install	No	No	5.00.9045.1000	5.00.9045.1001	22-Feb-2021 5:55 PM
Updates and Servicing 1 items							
Search							
Name	Date Released	State	Prereq Only	Ignore Prereq Warning	Full Version	Client Version	Last Update Time
Configuration Manager Technical Preview 2102	19-Feb-2021 12:00 PM	Installed	No	Yes	5.00.9045.1000	5.00.9045.1001	22-Feb-2021 9:01 PM



General

General

Features

Client Update Options

License Terms

Summary

Progress

Completion

Configuration Manager Technical Preview 2102

This wizard helps you configure and install this update.

[Learn more.](#)

This version includes:

Configuration Manager site server updates
Configuration Manager console updates
Configuration Manager client updates
Fixes for known issues
New features

Prerequisite warnings:

☒ Ignore any prerequisite check warnings and install this update regardless of missing requirements.

[Privacy Statement](#)

< Previous

Next >

Summary

Cancel



Features

General

Features

Client Update Options

License Terms

Summary

Progress

Completion

Features included in update pack

This update pack includes the following features. Select the features you want to enable now. Features you don't enable now can be enabled later from the Updates and Servicing node of the Configuration Manager console.

- ☒ Remove Central Administration Site
- ☒ Cloud management gateway with Azure VM scale set
- ☒ Microsoft Operations Management Suite (OMS) Connector
- ☒ Task Sequence Debugger
- ☒ Community hub
- ☒ Windows Hello for Business
- ☒ Task Sequence as an app model deployment type install method
- ☒ Application Groups
- ☒ PFX Create
- ☒ Approve application requests for users per device

Description:

< Previous

Next >

Summary

Cancel



Client Update Options

General

Features

Client Update Options

License Terms

Summary

Progress

Completion

Client Update Settings

This update includes an update for the Configuration Manager client. You can upgrade your clients immediately, or validate this client in a pre-production collection before you upgrade all your Configuration Manager clients.

☒ Upgrade without validating

Overwrites your current Configuration Manager client package with the new client update. All new client installations and client upgrades use this new client update.

☐ Validate in pre-production collection

Validate the client update on members of the pre-production collection while you keep your production client package intact. Later, you can overwrite the production package using Client Update Options in the Updates and Servicing node of the Configuration Manager console.

Pre-production collection:

[Browse...](#)

< Previous

Next >

Summary

Cancel



License Terms

General

Features

Client Update Options

License Terms

Summary

Progress

Completion

Review and accept the terms for this update pack

You must accept the License Terms and Privacy Statement to continue installation.

[View the License Terms](#)[View the Privacy Statement](#)

☒ I accept these License Terms and Privacy Statement.

You can add or update your Software Assurance expiration date. This date must be after 01-Oct-2016.

Software Assurance expiration date:

01-May-2021 

[Learn more](#)

< Previous

Next >

Summary

Cancel



Summary

General

Features

Client Update Options

License Terms

Summary

Progress

Completion

Confirm the Settings

Details:

Summary of update package installation

Install Update Package Configuration Manager Technical Preview 2102
Prerequisite warnings will be ignored
Turn on the following features:
• Remove Central Administration Site
Test new version of the client in production
Software Assurance expiration date is 2021-05-01.

To change these settings, click Previous. To apply the settings, click Next.

< Previous

Next >

Summary

Cancel



Completion

General

Features

Client Update Options

License Terms

Summary

Progress

Completion

**The Configuration Manager Updates Wizard completed successfully**

Details:

Summary of update package installation

✓ Success: Install Update Package Configuration Manager Technical Preview 2102
Prerequisite warnings will be ignored
Turn on the following features:
• Remove Central Administration Site
Test new version of the client in production
Software Assurance expiration date is 2021-05-01.

To exit the wizard, click Close.

< Previous

Next >

Summary

Close

Updates and Servicing 2 items							
<input type="text" value="Search"/>							
Name	Date Released	State	Prereq Only	Ignore Prereq Warning	Full Version	Client Version	Last Update Time
Configuration Manager Technical Preview 2102	19-Feb-2021 12:00 PM	Installing	No	Yes	5.00.9045.1000	5.00.9045.1001	22-Feb-2021 7:55 PM

Configuration Manager



A new version of the console is available (5.2103.1053.1000). Click OK to close the console and install the new version now. Click Cancel to continue working with the old console (5.2103.1040.1000). Working in the old console might corrupt data.

OK

Cancel

About Microsoft Endpoint Configuration Manager



Microsoft Endpoint Configuration Manager

Microsoft Endpoint Configuration Manager

Version 2102 for Technical Preview
Console version: 5.2103.1053.1000

Microsoft Endpoint Configuration Manager 2102 Tech Preview

Welcome to update 2102 for Configuration Manager Technical Preview. Below you can find information about some of the new features and scenarios that are now available for you to try. You can also view which of the new scenarios you have completed for each feature. [Read more](#) about the latest changes in the Technical Preview build.

Please continue to give us feedback! To report any issues, file [product feedback](#) in the console. To request a new feature or enhancement, use the [Configuration Manager UserVoice site](#).

- What's New in 2102

Progress: 2

Add a report as a favorite

You now have the ability to make a report a favorite. This allows you to access it quickly from the Favorites sub-node under the Reporting node. Favorites are typically reports that you use most often and are identified with a filled star. This feature requires SQL Reporting Server 2017 or later so please ensure you meet the minimum requirement before use.

BitLocker removable volume recovery key and TPM Owner Authorization escrow over the Cloud Management Gateway (CMG)

TPM Owner Authorization (when available) and removable volume escrow keys are now escrowed by the Configuration Manager client over CMG (or MP in special circumstances).

 Scenarios:

- ☐ Protect removable drive with BitLocker

Customize Software Center to match company branding preferences

The foreground color can now be customized in Software Center.

 Scenarios:

- In Client Settings, select the Software Center group. Specify a foreground color

Download Power BI report templates from Community hub

Community hub now supports contributing and downloading Power BI report template files. This integration allows Administrators to easily share and reuse Power BI reports.

Microsoft Endpoint Configuration Manager 2102 Tech Preview

Enable TLS certificate pinning for devices scanning HTTPS-configured WSUS servers

Further increase the security of HTTPS scans against WSUS by enforcing certificate-pinning. To enable this behavior, add certificates for your WSUS servers to the new WindowsServerUpdateServices certificate store on your clients and enable certificate-pinning through Client Settings. This will ensure that your clients will only be able to communicate with WSUS when certificate-pinning is successful. [Learn more about scan changes and certificates for added security for Windows devices using WSUS for updates.](#)

Improvements to collection evaluation view

You can now view a summary of collection evaluation status for all the primary sites in the hierarchy from the CAS. Additional ease of use improvements include the ability to drill through from collection evaluation status queue to a collection, and the ability to copy text to the clipboard from the collection evaluation page. You now also have the ability to configure the refresh interval for the collection evaluation statistics page.

Improvements to query preview

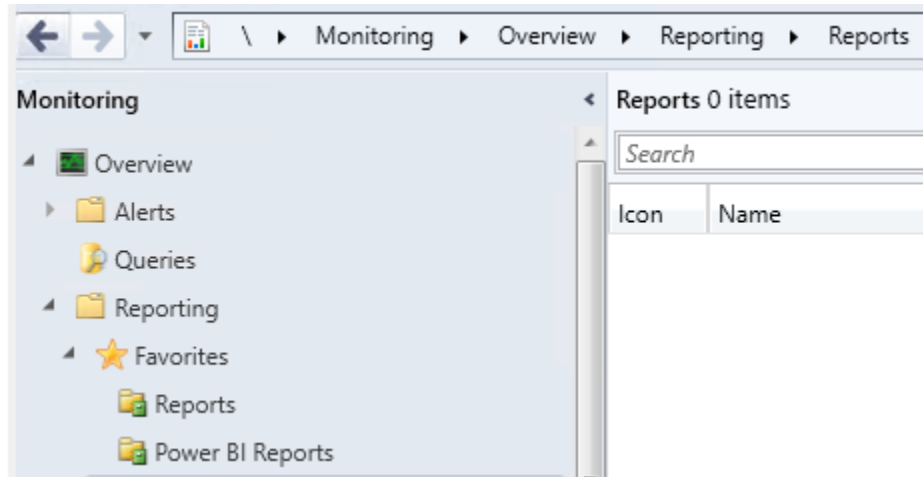
Before previewing a query, you now have the option to configure the number of rows to be returned and whether duplicates should be omitted. Additionally, statistics for the query preview such as number of rows returned and elapsed time are shown.

Improvements to the collection relationships viewer

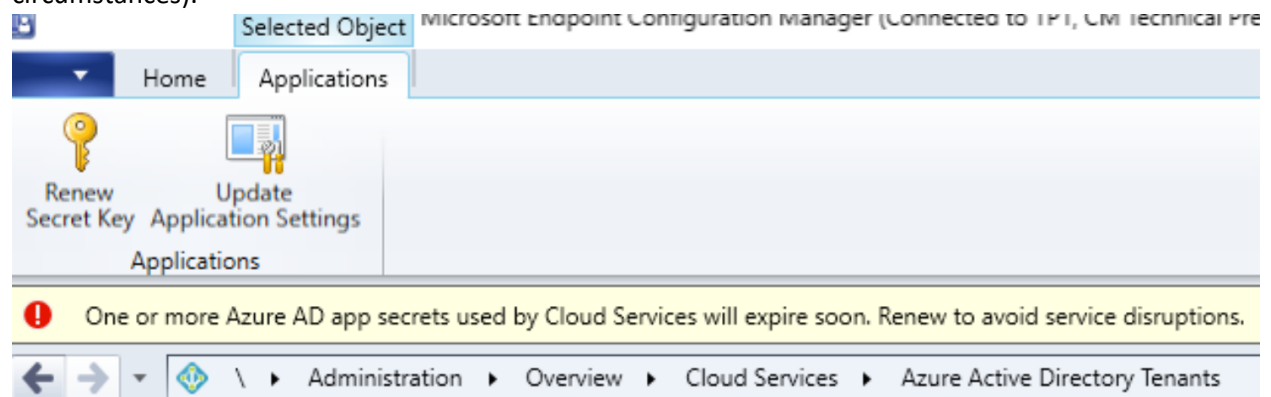
You can now view dependent and dependency relationships for a collection together in one graph. You can also filter the relationship types shown and navigate to specific pages in the graph. Selecting any collection in the graph will allow you view the relationships for that collection.

NEW FEATURES:

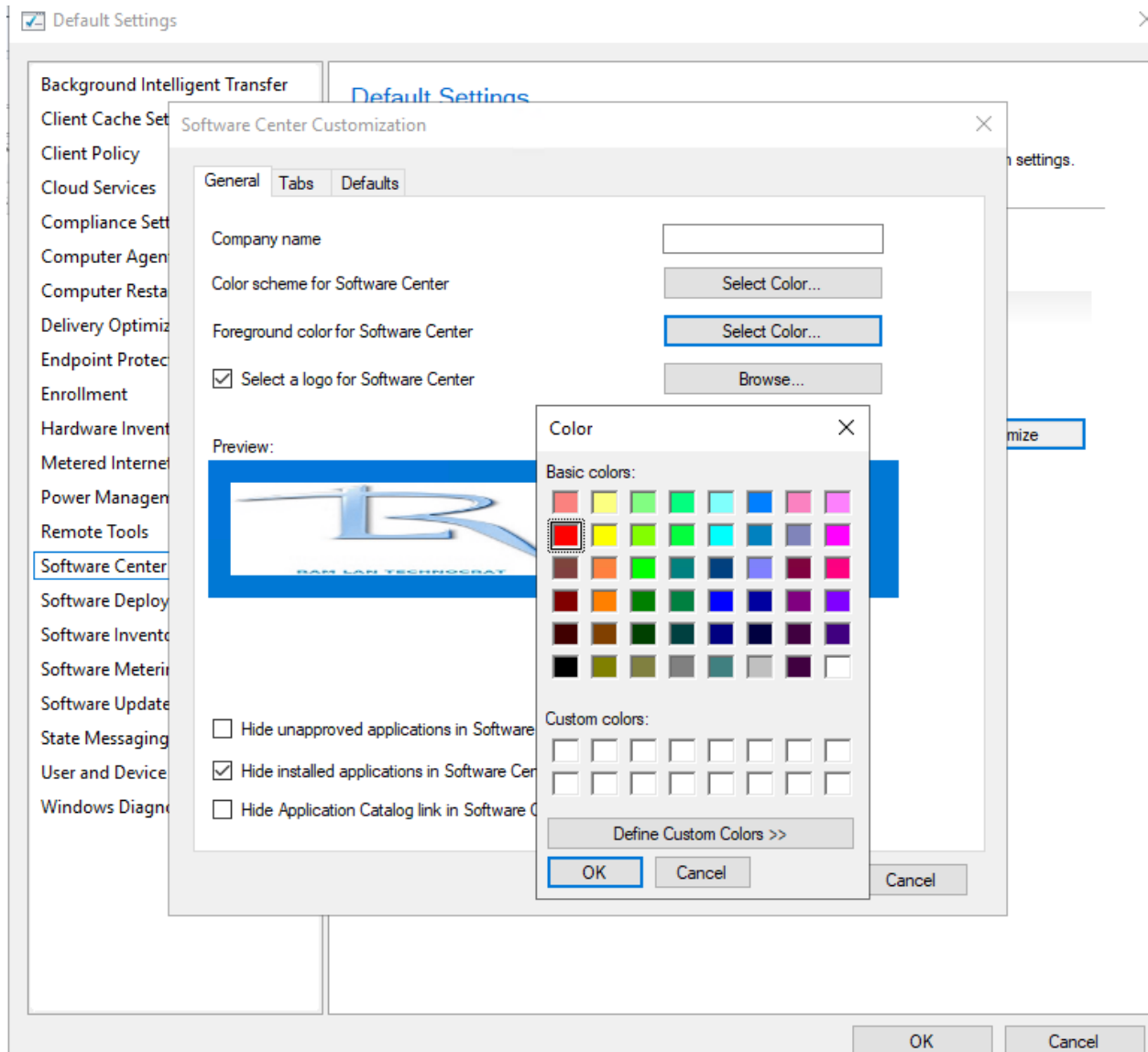
Add a report as a favorite - You now have the ability to make a report a favorite. This allows you to access it quickly from the Favorites sub-node under the Reporting node. Favorites are typically reports that you use most often and are identified with a filled star. This feature requires SQL Reporting Server 2017 or later so please ensure you meet the minimum requirement before use.



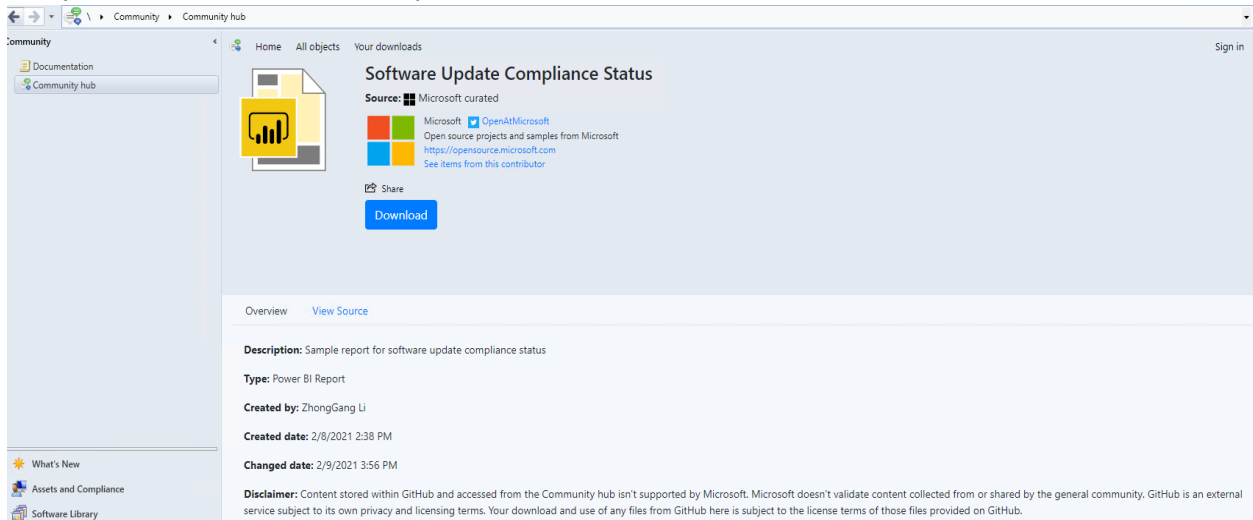
BitLocker removable volume recovery key and TPM Owner Authorization escrow over the Cloud Management Gateway (CMG) - TPM Owner Authorization (when available) and removable volume escrow keys are now escrowed by the Configuration Manager client over CMG (or MP in special circumstances).



Customize Software Center to match company branding preferences - The foreground color can now be customized in Software Center.



Download Power BI report templates from Community hub - Community hub now supports contributing and downloading Power BI report template files. This integration allows Administrators to easily share and reuse Power BI reports.

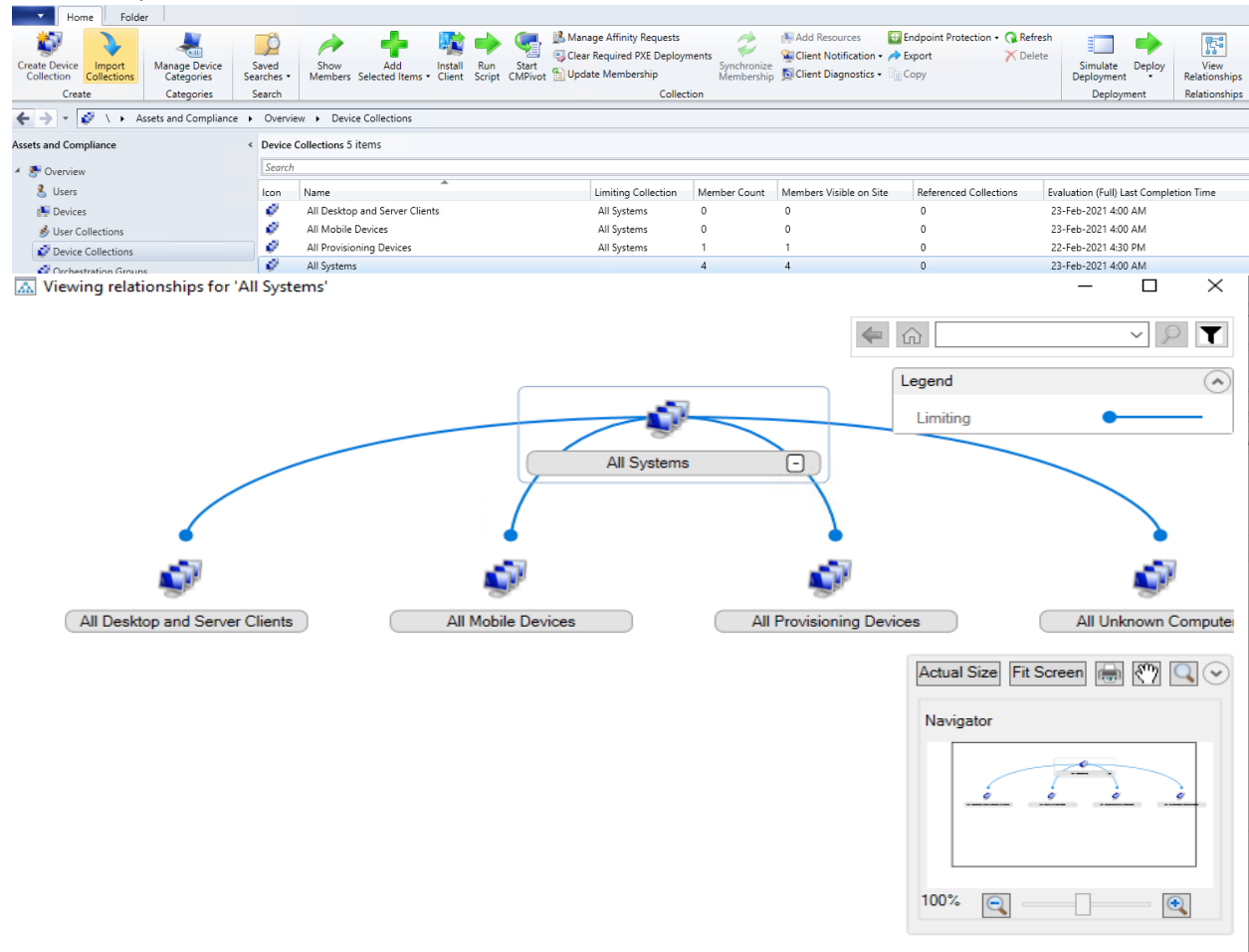


Enable TLS certificate pinning for devices scanning HTTPS-configured WSUS servers - Further increase the security of HTTPS scans against WSUS by enforcing certificate-pinning. To enable this behavior, add certificates for your WSUS servers to the new WindowsServerUpdateServices certificate store on your clients and enable certificate-pinning through Client Settings. This will ensure that your clients will only be able to communicate with WSUS when certificate-pinning is successful.

Improvements to collection evaluation view - You can now view a summary of collection evaluation status for all the primary sites in the hierarchy from the CAS. Additional ease of use improvements include the ability to drill through from collection evaluation status queue to a collection, and the ability to copy text to the clipboard from the collection evaluation page. You now also have the ability to configure the refresh interval for the collection evaluation statistics page.

Improvements to query preview - Before previewing a query, you now have the option to configure the number of rows to be returned and whether duplicates should be omitted. Additionally, statistics for the query preview such as number of rows returned and elapsed time are shown.

Improvements to the collection relationships viewer - You can now view dependent and dependency relationships for a collection together in one graph. You can also filter the relationship types shown and navigate to specific pages in the graph. Selecting any collection in the graph will allow you view the relationships for that collection.



This concludes all the new features of TP2102.

Thanks

Ram Lan
23rd Feb 2021