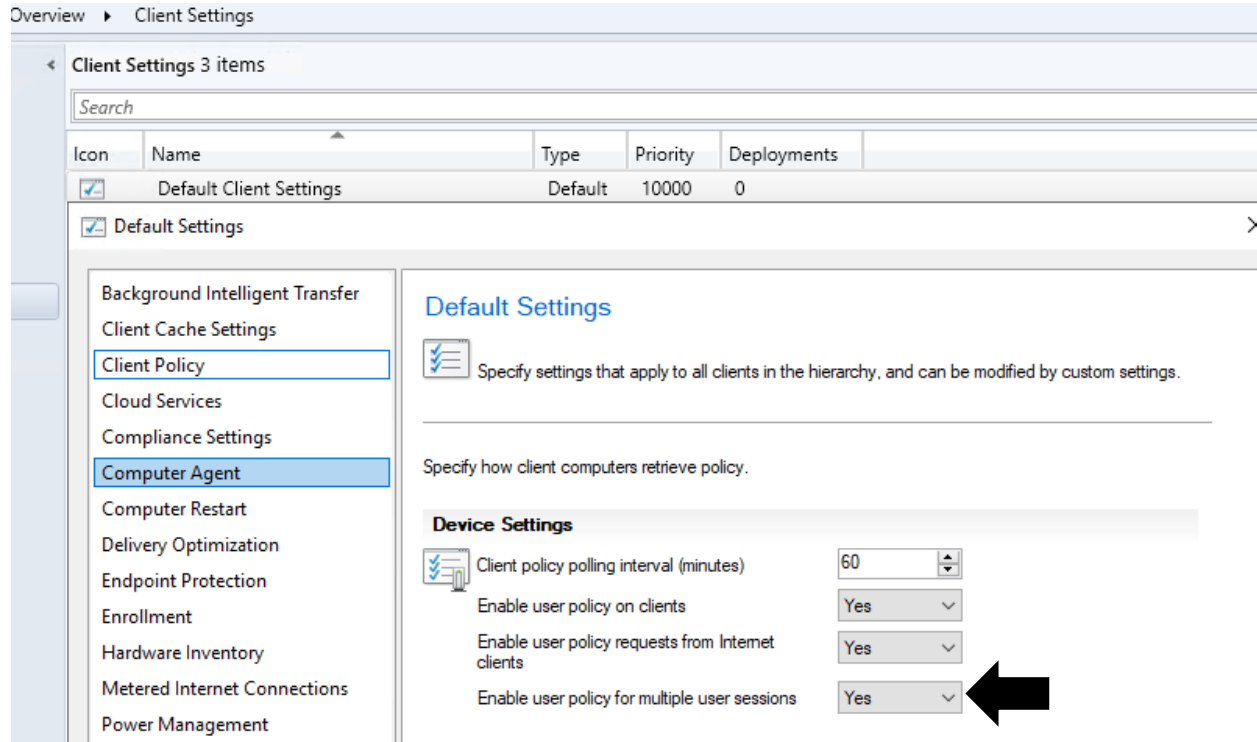


Multi Session Support for Windows Virtual Desktop in Azure

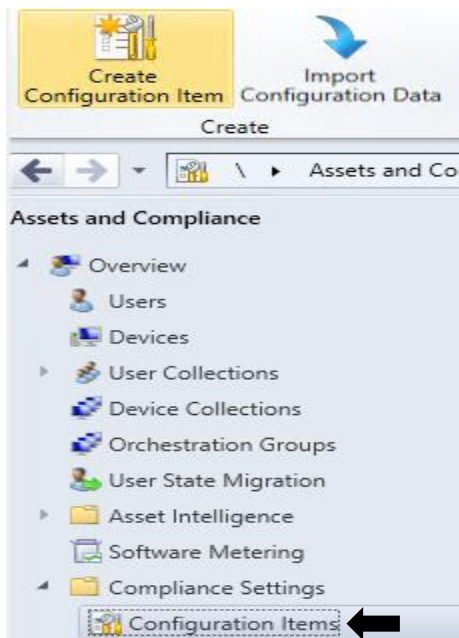
In this post, I will layout the steps to configure and deploy multi session for WVD.

INTRODUCTION - Windows 10 enterprise multi-session support is only for Windows Virtual Desktop (WVD) solution. WVD Windows 10 multi-session is similar to a terminal server, some of these virtual devices allow multiple concurrent active user sessions.

CONFIGURE CLIENT SETTINGS - You need to enable ConfigMgr Current Branch Client settings for Windows Virtual Desktop (WVD) Windows 10 Multi-session VMs.



CONFIGURATION ITEM - Create Configuration Item (CI) for WVD Windows 10 multi-session VMs.





General

General

- Supported Platforms
- Settings
- Compliance Rules
- Summary
- Progress
- Completion

Specify general information about this configuration item

Configuration items define a configuration and associated validation criteria to be assessed for compliance on devices.

Name:

Description:

Specify the type of configuration item that you want to create:

Settings for devices managed with the Configuration Manager client

- Windows 10
- Mac OS X (custom)
- Windows Desktops and Servers (custom)
- This configuration item contains application settings

Settings for devices managed without the Configuration Manager client

- Windows 8.1 and Windows 10
- Windows Phone

Assigned categories to improve searching and filtering:

Categories...

- < Previous
- Next >
- Summary
- Cancel



Supported Platforms

General

- Supported Platforms
- Settings
- Compliance Rules
- Summary
- Progress
- Completion

Specify the client operating systems that will assess this configuration item for compliance

Select the versions of Windows that will assess this configuration item for compliance:

Select all

- Windows XP
- Windows Vista
- Windows 7
- Windows 8
- Windows 8.1
- Windows 10
 - All Windows 10 (ARM64)
 - All Windows 10 Enterprise multi-session and higher
 - All Windows 10 (64-bit)
 - All Windows 10 (32-bit)
- Windows 2003
- Windows 2008
- Windows Server 2012
- Windows Server 2012 R2
- Windows Server 2016
- Windows Embedded
- Windows Server 2019

Specify the version of Windows manually:

- < Previous
- Next >
- Summary
- Cancel



Settings

- General
- Supported Platforms
- Settings**
- Compliance Rules
- Summary
- Progress
- Completion

Specify settings for this operating system

Use settings to represent business or technical conditions to assess for compliance on client devices. The following settings are associated with this configuration item.

Filter...

Name	Setting Type	Inherited	User Setting
There are no items to show in this view.			



New... Edit... Delete

< Previous Next > Summary Cancel

Enable the settings that are required for your WVD Windows 10 Multi-session VMS. **Will provide script later.**



Settings

- General
- Supported Platforms
- Settings**
- Compliance Rules
- Summary
- Progress
- Completion

Create Setting

General Compliance Rules

Specify details about this setting that represents a business or technical condition to assess for compliance on client devices.

Name:

Description:

Setting type:

Data type:

Discovery script

Specify the script to find and return the value to be assessed for compliance on client devices. Use the echo command to return the script value to Configuration Manager.

Script status: No script specified.

Remediation script (optional)

Specify the script to remediate noncompliant setting values found on client devices. Configuration Manager passes the noncompliant value to the script as a parameter.

Script status: No script specified.

Run scripts by using the logged on user credentials

Run scripts by using the 32-bit scripting host on 64-bit devices

OK Cancel Apply

< Previous Next > Summary Cancel



Summary

- General
- Supported Platforms
- Settings
- Compliance Rules
- Summary**
- Progress
- Completion

The wizard will create an operating system configuration item with the following settings

Details:

The wizard will create an operating system configuration item with the following settings:

New operating system configuration item will be saved as:

- Name: WVD Windows 10 Multi-Session
- Description:
- Categories:

The following Windows versions are supported:

- All Windows 10 multi-session

The following compliance rules are added:

The following settings are added:

To change these settings, click Previous. To apply the settings, click Next.

< Previous

Next >

Summary

Cancel



Completion

- General
- Supported Platforms
- Settings
- Compliance Rules
- Summary
- Progress
- Completion**



The Create Configuration Item Wizard completed successfully

Details:

✓ Success: The Create Configuration Item Wizard completed successfully.

New operating system configuration item will be saved as:

- Name: WVD Windows 10 Multi-Session
- Description:
- Categories:

The following Windows versions are supported:

- All Windows 10 multi-session

The following compliance rules are added:

The following settings are added:

To exit the wizard, click Close.

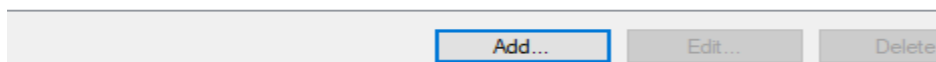
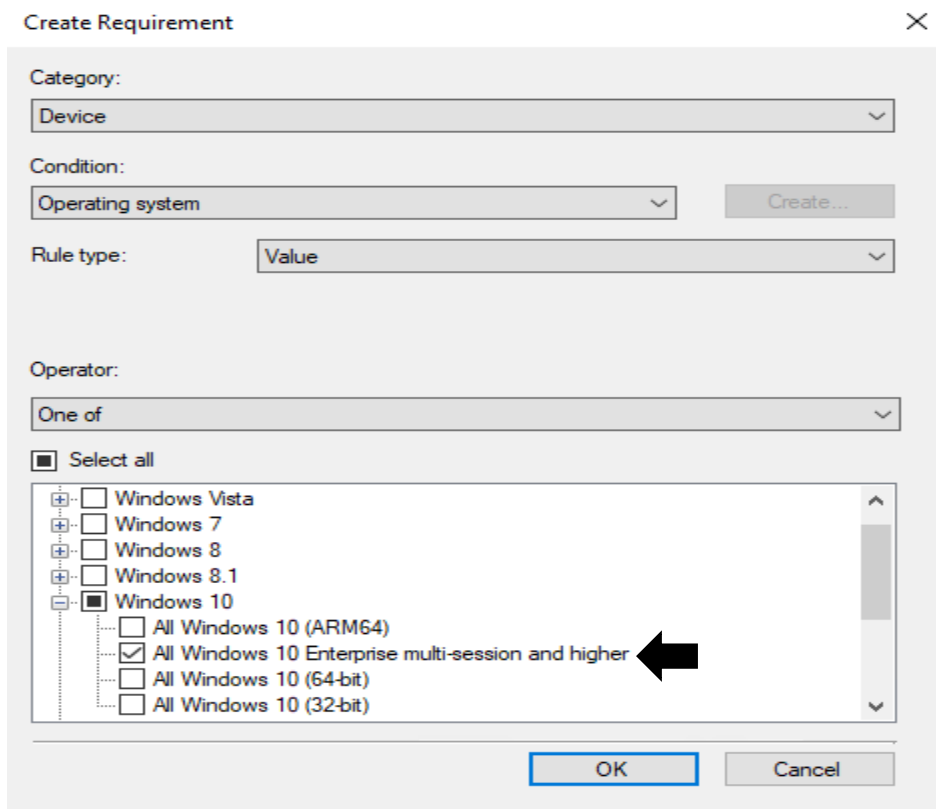
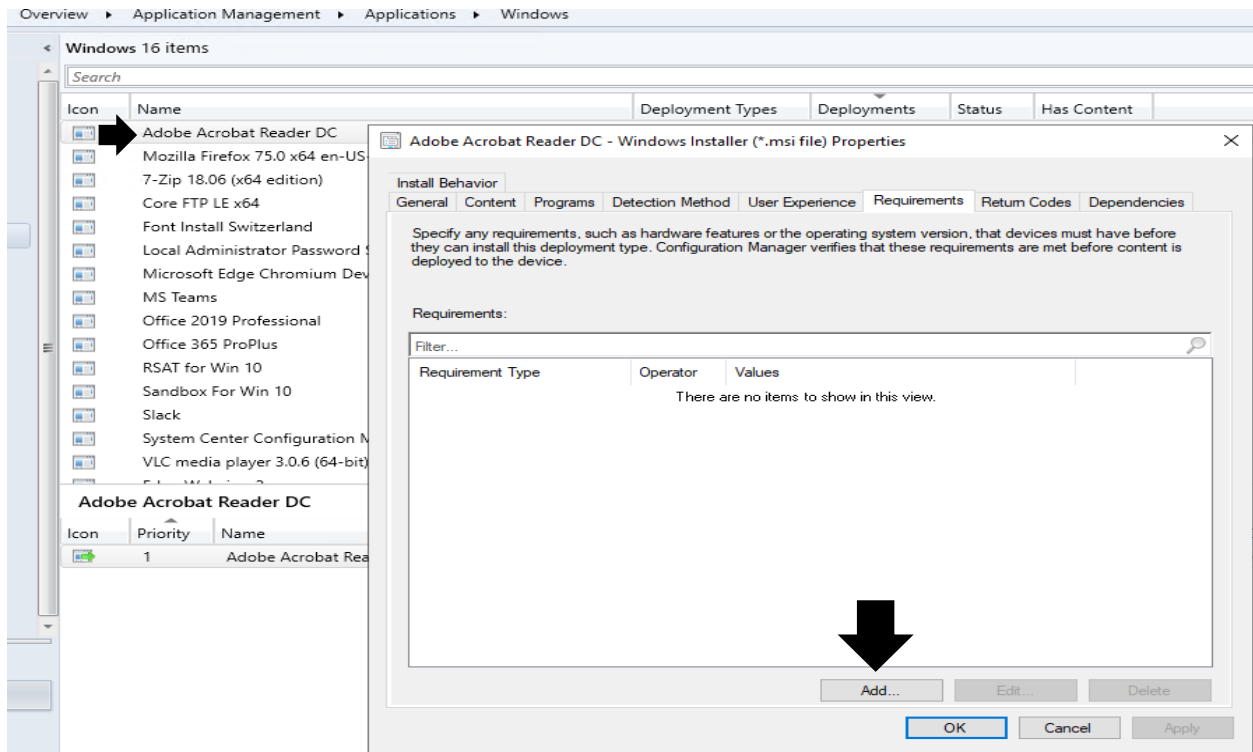
< Previous

Next >

Summary

Close

REQUIREMENT RULES – Select the Windows 10 enterprise multi-session as one of the operating system from the application requirement rules.



ENABLE USER POLICY - User policy is disabled by default on Windows 10 Multi-session devices. You can use this "PolicyEnableUserPolicyOnTS" from version 1906 onwards if you want to enable the SCCM user policy for Windows 10 multi user.

Set this property to true to enable user policy on a Windows 10 multi-session Windows Virtual Desktop VMs. If PolicyEnableUserPolicyPolling is set to false, this property is ignored.

This complete multi session configuration for WVD.

Thanks

Ram Lan

31st Jan 2021

Note: I will provide script to complete CI/CB later.