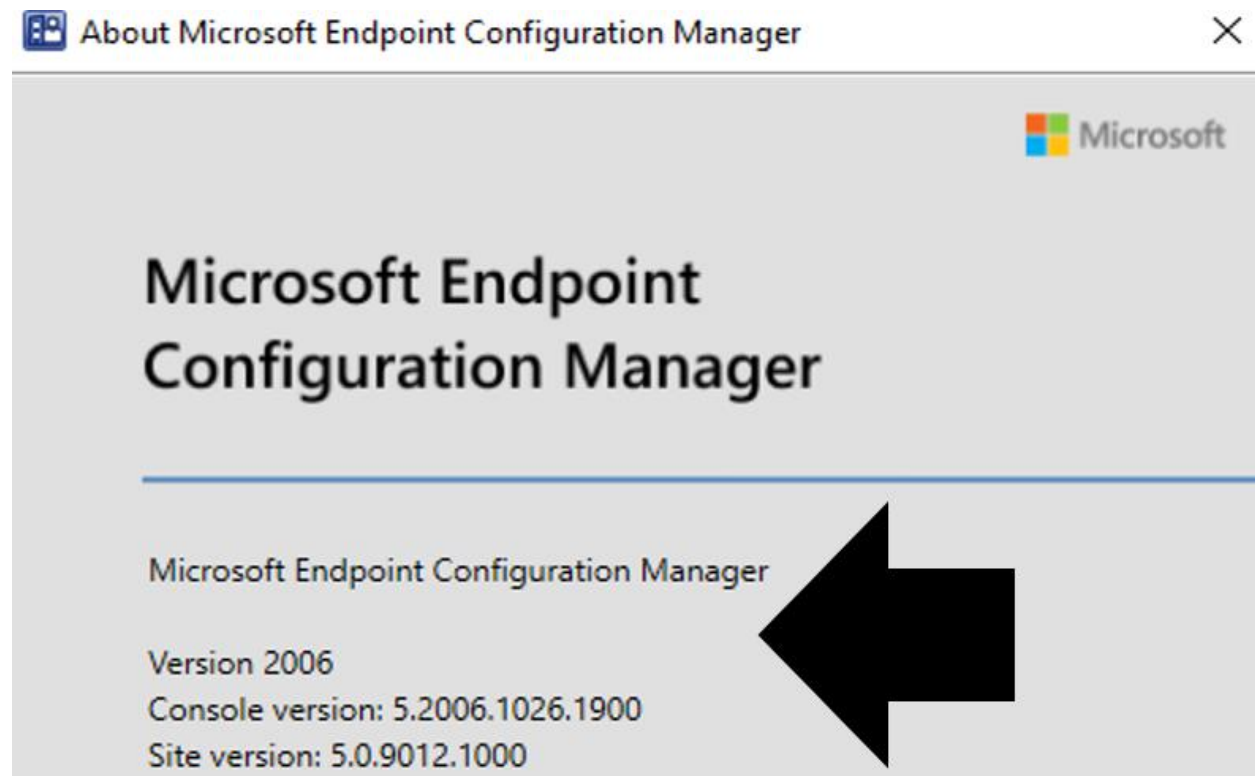


How to upgrade Current Branch 2006 to Current Branch 2010

I am currently running CB2006. In this post, we will install CB2010 released today.



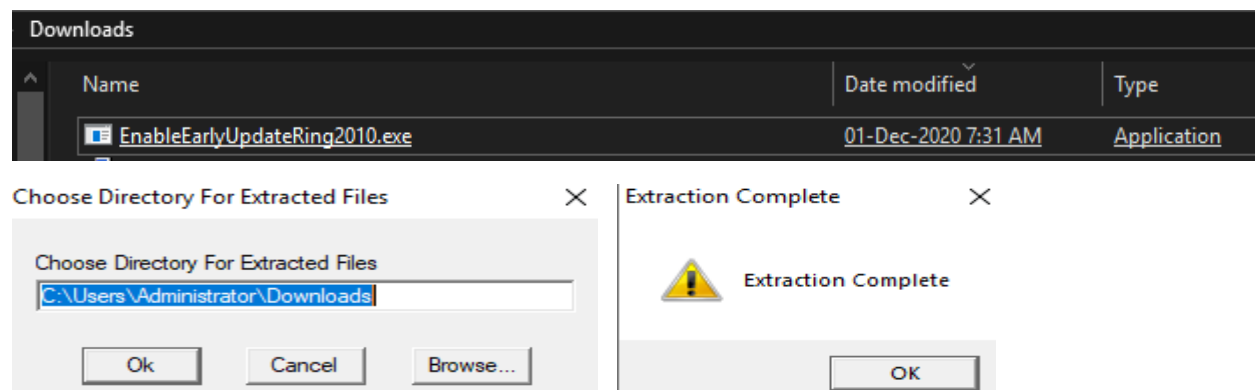
More about this release here - <https://docs.microsoft.com/en-us/mem/configmgr/core/plan-design/changes/whats-new-in-version-2010>

Early Update Ring

<https://docs.microsoft.com/en-us/mem/configmgr/core/servers/manage/checklist-for-installing-update-2010>

At this time, version 2010 is released for the early update ring. To install this update, you need to opt-in. The following PowerShell script adds your hierarchy or standalone primary site to the early update ring for version 2010:

<https://go.microsoft.com/fwlink/?linkid=2099733>



Copy this file to Config Manager Server

Name	Date modified	Type
enableearlyupdatering2010.ps1	23-Nov-2020 11:19 PM	Windows PowerShell Script

Open PowerShell as Admin

```
PS C:\Users\Administrator.RAMLAN\Documents> .\enableearlyupdatering2010.ps1

cmdlet enableearlyupdatering2010.ps1 at command pipeline position 1
Supply values for the following parameters:
(Type !? for Help.)
siteServer: CB.RAMLAN.CA
-Message Determine the providers on the siteServer: 'CB.RAMLAN.CA'
-Message SiteCode: 'TOR'
-Message Provider Machine Name: 'CB.RAMLAN.CA'

Path           : \\CB.RAMLAN.CA\root\SMS\site_TOR\SMS_SCI_Component.FileType=2,ItemName="SMS_DMP_DOWNLOADER|SMS Dmp
Connector",ItemType="Component",SiteCode="TOR"
RelativePath   : SMS_SCI_Component.FileType=2,ItemName="SMS_DMP_DOWNLOADER|SMS Dmp
Connector",ItemType="Component",SiteCode="TOR"
Server        : CB.RAMLAN.CA
NamespacePath  : root\SMS\site_TOR
ClassName      : SMS_SCI_Component
IsClass       : False
IsInstance    : True
IsSingleton    : False

The command(s) completed successfully
```

Now wait for the update to show up in the console

Updates and Servicing 5 items

Name	Date Released	State	Prereq Only	Package Guid	Full Version	Client Version
Configuration Manager 2010	25-Nov-2020 12:00 AM	Available to download	No	D5054056-F41C-4E61-90A7-4F135B76F806	5.00.9040.1000	5.00.9040.1015

Download

view Updates and Servicing

Updates and Servicing 5 items

Name	Date Released	State	Prereq Only	Package Guid	Full Version	Client Version
Configuration Manager 2010	25-Nov-2020 12:00 AM	Available to download	No	D5054056-F41C-4E61-90A7-4F135B76F806	5.00.9040.1000	5.00.9040.1015

Configuration Manager



Still checking for updates. This can take a few minutes. Click Refresh to see new updates. View the dmpdownloader.log file for sync status.

OK

Updates and Servicing 5 items

Name	Date Released	State	Prereq Only	Package Guid	Full Version	Client Version
Configuration Manager 2010	25-Nov-2020 12:00 AM	Downloading	No	D5054056-F41C-4E61-90A7-4F135B76F806	5.00.9040.1000	5.00.9040.1015

Updates and Servicing 5 items

Search

Name	Date Released	State	Prereq Only	Package Guid	Full Version	Client Version
Configuration Manager 2010	25-Nov-2020 12:00 AM	Ready to install	No	D5054056-F41C-4E61-90A7-4F135B76F806	5.00.9040.1000	5.00.9040.1015

iew > Updates and Servicing >

Updates and Servicing 5 items

Search

Name	Date Released	State	Prereq Only	Package Guid	Full Version	Client Version
Configuration Manager 2010	25-Nov-2020 12:00 AM	Ready to install	No	D5054056-F41C-4E61-90A7-4F135B76F806	5.00.9040.1000	5.00.9040.1015

Configuration Manager Updates Wizard



General

General

Features

Client Update Options

License Terms

Summary

Progress

Completion

Configuration Manager 2010

This wizard helps you configure and install this update.

[Learn more.](#)

This version includes:

Configuration Manager site server updates
 Configuration Manager console updates
 Configuration Manager client updates
 Fixes for known issues
 New features

Prerequisite warnings:

Ignore any prerequisite check warnings and install this update regardless of missing requirements.

[Privacy Statement](#)

< Previous

Next >

Summary

Cancel



Features

General

Features

Client Update Options

License Terms

Summary

Progress

Completion

Features included in update pack

This update pack includes the following features. Select the features you want to enable now. Features you don't enable now can be enabled later from the Updates and Servicing node of the Configuration Manager console.

- Cloud management gateway with Azure VM scale set
- Microsoft Operations Management Suite (OMS) Connector
- Device Health Attestation assessment for compliance policies for conditional access
- Windows Defender Exploit Guard policy
- Community hub
- Windows Hello for Business
- PFX Create
- Approve application requests for users per device
- VPN for Windows 10
- BitLocker Management

Description:

Cloud management gateway deployments now use Azure virtual machine scale set, which introduces support for Azure Cloud Solution Provider subscriptions.

< Previous

Next >

Summary

Cancel



Client Update Options

General

Features

Client Update Options

License Terms

Summary

Progress

Completion

Client Update Settings

This update includes an update for the Configuration Manager client. You can upgrade your clients immediately, or validate this client in a pre-production collection before you upgrade all your Configuration Manager clients.

Upgrade without validating

Overwrites your current Configuration Manager client package with the new client update. All new client installations and client upgrades use this new client update.

Validate in pre-production collection

Validate the client update on members of the pre-production collection while you keep your production client package intact. Later, you can overwrite the production package using Client Update Options in the Updates and Servicing node of the Configuration Manager console.

Pre-production collection:

Browse...

< Previous

Next >

Summary

Cancel



License Terms

- General
- Features
- Client Update Options
- License Terms**
- Summary
- Progress
- Completion

Review and accept the terms for this update pack

You must accept the License Terms and Privacy Statement to continue installation.

- [View the License Terms](#)
- [View the Privacy Statement](#)

I accept these License Terms and Privacy Statement.

You can add or update your Software Assurance expiration date. This date must be after 01-Oct-2016.

Software Assurance expiration date:

[Learn more](#)

< Previous **Next >** Summary Cancel



Summary

- General
- Features
- Client Update Options
- License Terms
- Summary**
- Progress
- Completion

Confirm the Settings

Details:

Summary of update package installation

Install Update Package Configuration Manager 2010
Prerequisite warnings will be ignored
Turn on the following features:

- Cloud management gateway with Azure VM scale set

Test new version of the client in production
Software Assurance expiration date is 2021-02-28.

To change these settings, click Previous. To apply the settings, click Next.

< Previous **Next >** Summary Cancel



Completion

- General
- Features
- Client Update Options
- License Terms
- Summary
- Progress
- Completion**

The Configuration Manager Updates Wizard completed successfully

Details:

Summary of update package installation

Success: Install Update Package Configuration Manager 2010
 Prerequisite warnings will be ignored
 Turn on the following features:

- Cloud management gateway with Azure VM scale set

Test new version of the client in production
 Software Assurance expiration date is 2021-02-28.

To exit the wizard, click Close.

< Previous Next > Summary **Close**

Updates and Servicing 5 items

Name	Date Released	State	Prereq Only	Package Guid	Full Version	Client Version
Configuration Manager 2010	25-Nov-2020 12:00 AM	Installing	No	D5054056-F41C-4E61-90A7-4F135B76F806	5.00.9040.1000	5.00.9040.1015

Configuration Manager



A new version of the console is available (5.2010.1093.1800). Click OK to close the console and install the new version now. Click Cancel to continue working with the old console (5.2006.1026.3100). Working in the old console might corrupt data.

OK

Cancel

Updates and Servicing 1 items

Name	Date Released	State	Prereq Only	Package Guid	Full Version	Client Version	Ignore Prereq Warning
Configuration Manager 2010	25-Nov-2020 12:00 AM	Installed	No	D5054056-F41C-4E61-90A7-4F135B76F806	5.00.9040.1000	5.00.9040.1015	Yes

About Microsoft Endpoint Configuration Manager



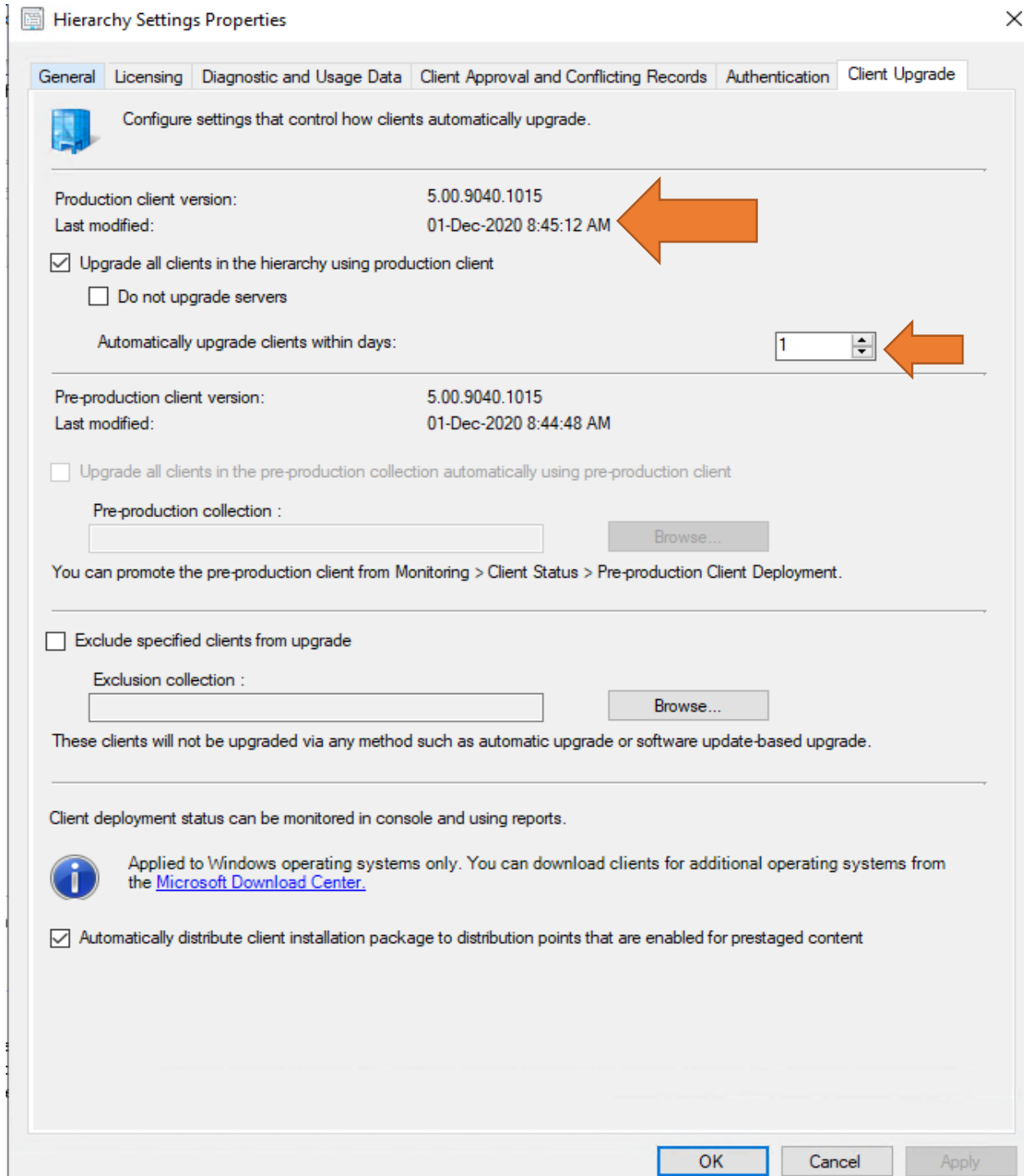
Microsoft Endpoint Configuration Manager

Microsoft Endpoint Configuration Manager

Version 2010
 Console version: 5.2010.1093.1800
 Site version: 5.0.9040.1000



Now time to check site hierarch settings for client upgrade



Now the upgrade to CB2010 is complete. I will post another blog covering new features within this release.

Thanks

Ram Lan
1st Dec 2020