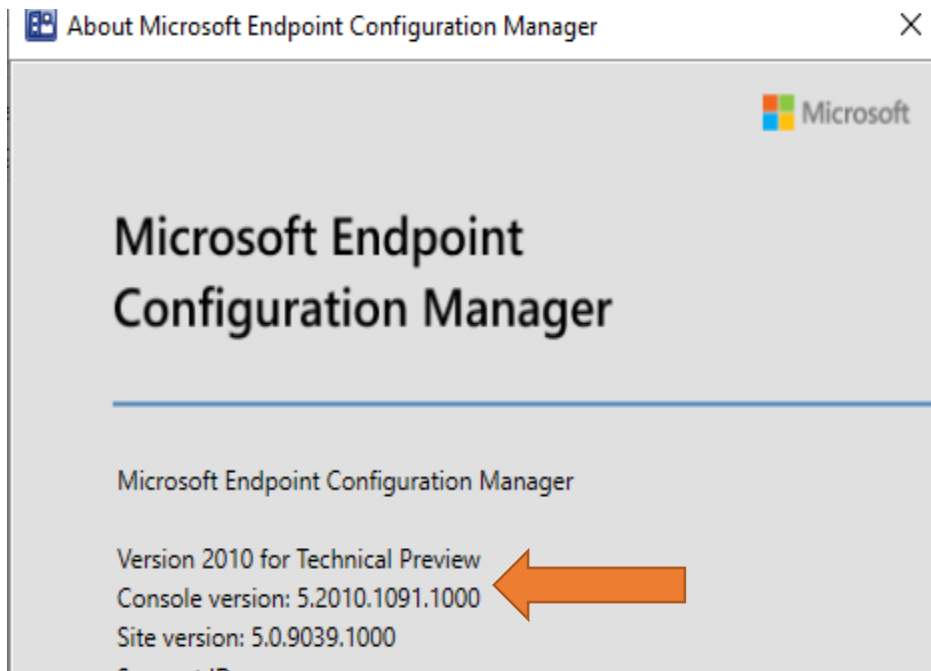


# Installing Technical Preview 2011

In this post, I will show you how to install TP2011 and explore new features. I am currently running TP2010.2. Will complete the upgrade from the console.



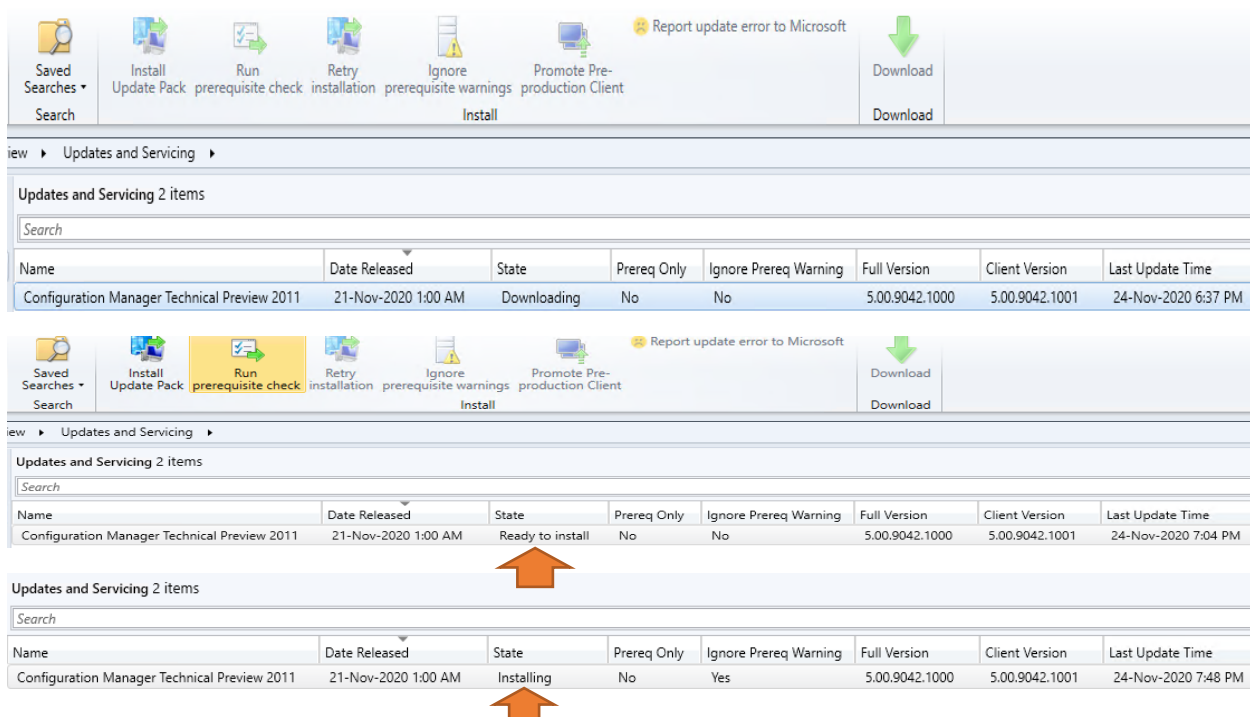
Below are the links to TP2011 documentation.

<https://docs.microsoft.com/en-us/mem/configmgr/core/get-started/2020/technical-preview-2011>

<https://docs.microsoft.com/en-us/mem/configmgr/core/get-started/technical-preview>

<https://techcommunity.microsoft.com/t5/configuration-manager-blog/categorize-community-hub-content-with-configuration-manager/ba-p/1925463#.X72PNvaYB4k.twitter>

Just clicked check for updates and it is downloading TP2011





General

- General
- Features
- Client Update Options
- License Terms
- Summary
- Progress
- Completion

## Configuration Manager Technical Preview 2011

This wizard helps you configure and install this update.

[Learn more.](#)

### This version includes:

Configuration Manager site server updates  
Configuration Manager console updates  
Configuration Manager client updates  
Fixes for known issues  
New features

### Prerequisite warnings:

☒ Ignore any prerequisite check warnings and install this update regardless of missing requirements.

[Privacy Statement](#)

< Previous   **Next >**   Summary   Cancel



Features

- General
- Features
- Client Update Options
- License Terms
- Summary
- Progress
- Completion

## Features included in update pack

This update pack includes the following features. Select the features you want to enable now. Features you don't enable now can be enabled later from the Updates and Servicing node of the Configuration Manager console.

- ☒ Device Health Attestation assessment for compliance policies for conditional access
- ☒ Windows Defender Exploit Guard policy
- ☒ Cloud management gateway with Azure VM scale set
- ☒ Microsoft Operations Management Suite (OMS) Connector
- ☒ Task Sequence Debugger
- ☒ Community hub
- ☒ Windows Hello for Business
- ☒ Task Sequence as an app model deployment type install method
- ☒ Application Groups
- ☒ PFX Create

### Description:

< Previous   **Next >**   Summary   Cancel



## Client Update Options

General

Features

Client Update Options

License Terms

Summary

Progress

Completion

## Client Update Settings

This update includes an update for the Configuration Manager client. You can upgrade your clients immediately, or validate this client in a pre-production collection before you upgrade all your Configuration Manager clients.

☒ Upgrade without validating

Overwrites your current Configuration Manager client package with the new client update. All new client installations and client upgrades use this new client update.

☐ Validate in pre-production collection

Validate the client update on members of the pre-production collection while you keep your production client package intact. Later, you can overwrite the production package using Client Update Options in the Updates and Servicing node of the Configuration Manager console.

Pre-production collection:

Browse...

< Previous

Next >

Summary

Cancel



## License Terms

General

Features

Client Update Options

License Terms

Summary

Progress

Completion

## Review and accept the terms for this update pack

You must accept the License Terms and Privacy Statement to continue installation.

[View the License Terms](#)

[View the Privacy Statement](#)

☒ I accept these License Terms and Privacy Statement.

You can add or update your Software Assurance expiration date. This date must be after 01-Oct-2016.

Software Assurance expiration date:

28-Feb-2021 

[Learn more](#)

< Previous

Next >

Summary

Cancel



## Summary

General

Features

Client Update Options

License Terms

Summary

Progress

Completion

## Confirm the Settings

Details:

**Summary of update package installation**

Install Update Package Configuration Manager Technical Preview 2011  
Prerequisite warnings will be ignored  
Test new version of the client in production  
Software Assurance expiration date is 2021-02-28.

To change these settings, click Previous. To apply the settings, click Next.

&lt; Previous

Next &gt;

Summary

Cancel



## Completion

General

Features

Client Update Options

License Terms

Summary

Progress

Completion



## The Configuration Manager Updates Wizard completed successfully

Details:

**Summary of update package installation**

✓ Success: Install Update Package Configuration Manager Technical Preview 2011  
Prerequisite warnings will be ignored  
Test new version of the client in production  
Software Assurance expiration date is 2021-02-28.

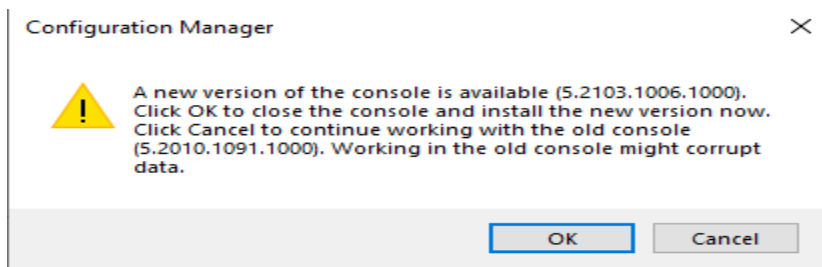
To exit the wizard, click Close.

&lt; Previous

Next &gt;

Summary

Close



## Microsoft Endpoint Configuration Manager 2011 Tech Preview

Welcome to update 2011 for Configuration Manager Technical Preview. Below you can find information about some of the new features and scenarios that are now available for you to try. You can also view which of the new scenarios you have completed for each feature. [Read more](#) about the latest changes in the Technical Preview build.

Please continue to give us feedback! To report any issues you encounter with the latest functionality included in this Technical Preview, use the [Microsoft Connect](#) website. To request a new feature or enhancement, use the [Configuration Manager UserVoice](#) site.

### What's New in 2011

Progress:  1

#### Approved scripts for Orchestration Groups

Select from scripts that have already been approved when configuring pre and post-scripts for an orchestration group.

#### Categorize Community hub content

Community hub content is grouped into a Microsoft, curated, or unreviewed category to allow admins to choose the types of content their environment displays.

#### Scenarios:

- ✓ In the hierarchy settings, select the content categories to display in Community hub for the environment

#### Improvements to Support Center

Support Center already shows updates which are targeted to your device but are not yet installed. In this release, to assist in troubleshooting you now have a list of all updates targeted to the device, including information about whether the update is installed or missing. Additionally Support Center now shows the available maintenance windows for the device.

#### Improvements to the Product Lifecycle dashboard

The product lifecycle dashboard has been extended with a new console node that is sortable and filterable giving you multiple ways to view product lifecycle information. From the new node you can view a set of devices and take actions such as creating collections, installing applications, running scripts, client notifications and diagnostics. The dashboard itself has a new time slider that gives you control over the timescale used for viewing the charts.

#### Software Center notifications display with logo

If you enable Software Center customizations, then notifications display the logo that you configure in client settings.

#### Windows 10 Dashboard Revamp

Added Quality Update Version and Feature Update Version charts, and Latest Build Gauge Chart.

## NEW FEATURES:

**Approved scripts for Orchestration Groups** - Select from scripts that have already been approved when configuring pre and post-scripts for an orchestration group.

You can now select from scripts that have already been approved when configuring pre and post-scripts for an orchestration group. When in the Create Orchestration Group Wizard, you'll see a new page called Script Picker. Select your pre and post scripts from your list of scripts that are already approved. You can still add scripts manually on the pre and post-script pages. Additionally, you can also edit scripts that you pre-populated from the Script Picker.

Create Orchestration Group Wizard

General

General

Member Selection

Rules Selection

Script Picker

Pre-Script

Post-Script

Summary

Progress

Completion

Specify general information for this Orchestration Group

Create an Orchestration Group to coordinate operations to optimize downtime for your group.

Name:

Description:

Orchestration Group timeout (in minutes): 720

Orchestration Group Member timeout (in minutes): 60

< Previous Next > Summary Cancel

**Categorize Community hub content** - Community hub content is grouped into a Microsoft, curated, or unreviewed category to allow admins to choose the types of content their environment displays.

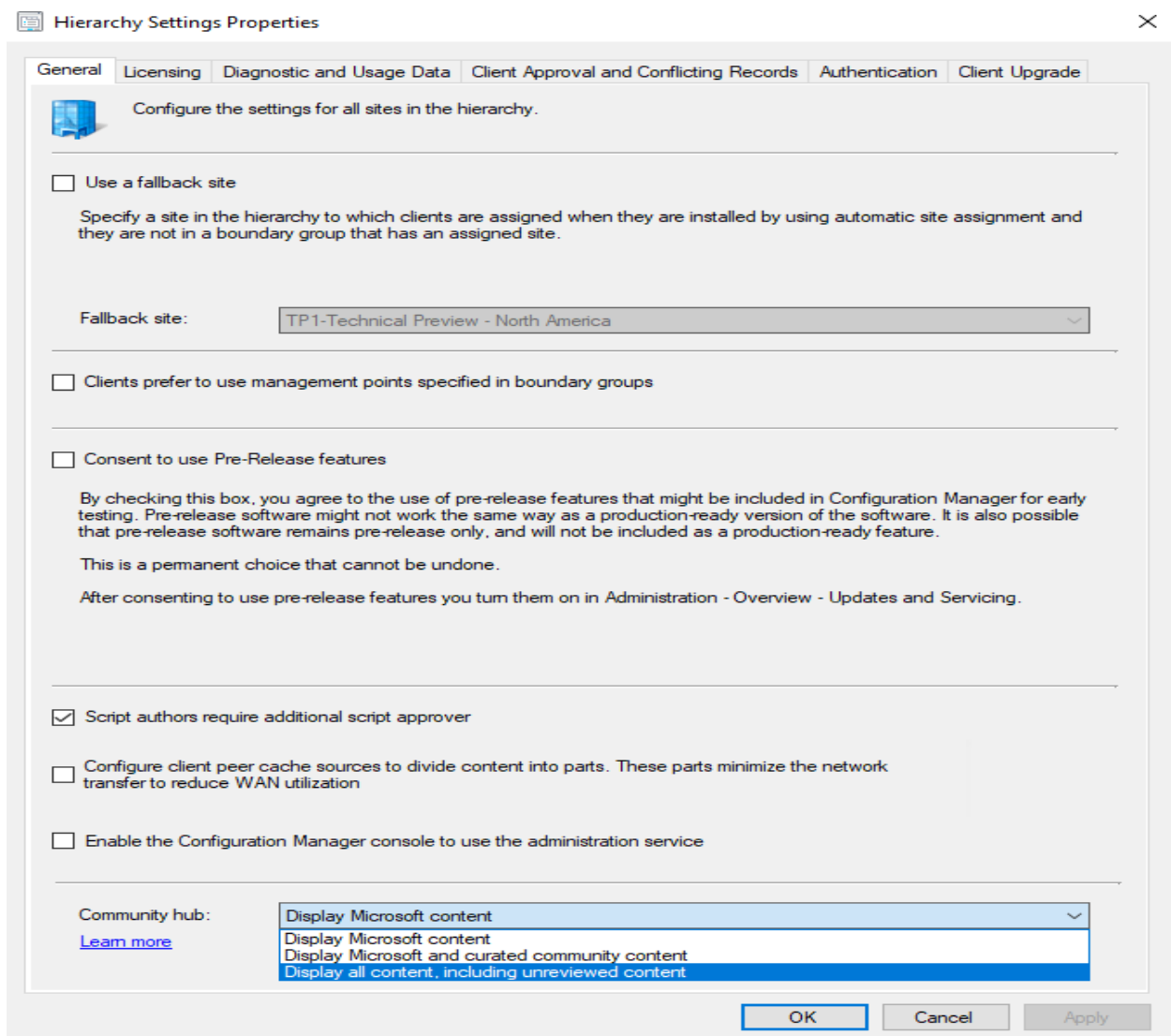
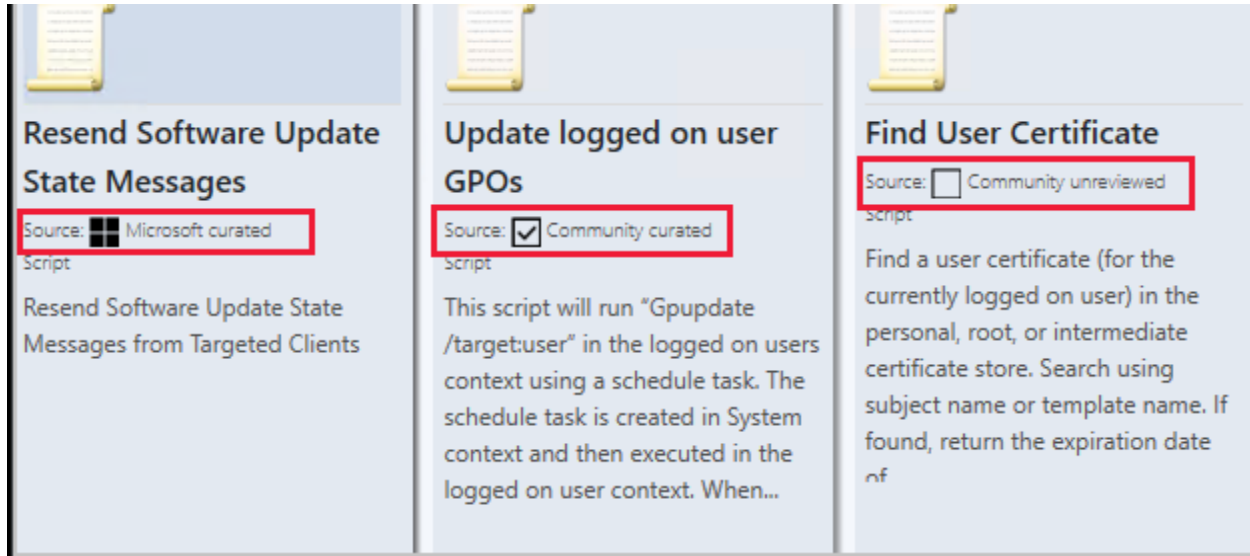
Community hub content is grouped into a Microsoft, curated, or unreviewed category to allow admins to choose the types of content their environment displays. Admins can choose from the different categories of content that are provided in the Community hub to match their risk profile and their willingness to share and use content from those outside Microsoft and outside their own company.

Community hub content has three categories for content sources:

Microsoft curated: Content provided by Microsoft

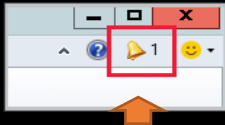
Community curated: Content provided by the community that gets reviewed by Microsoft

Community unreviewed: General content from the community that doesn't get reviewed by Microsoft

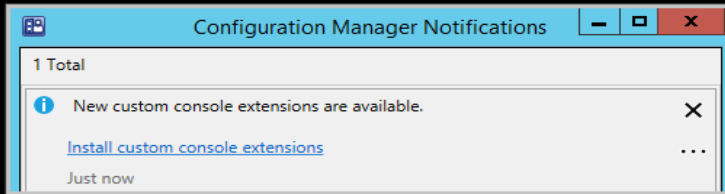


## Community hub on Windows Server operating systems

1. In the upper-right corner of the console, select the bell icon to display Configuration Manager console notifications.

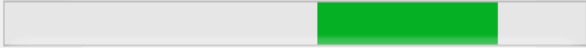


2. The notification will say **New custom console extensions are available.**



### Configuration Manager


Updating Extensions...



Close

### Configuration Manager

Update complete for extension 1 of 1.



Console extensions have been updated.  
To restart the Configuration Manager console, click Close.

Close

Microsoft System Configuration Manager (Configuration Manager) - Configuration Manager - Microsoft System Configuration Manager, for single user

Search

All Objects | Saved Searches | Search Settings | Save Current Search | Save Current Search As | Close | Active Search

Community > Community hub


Community

Home | All objects | Your downloads

Documentation

Community hub


### Top Downloads



**Shows when devices have restarted in the last seven days**

Source: Microsoft curated CUIPivot Query


Chart shows when devices in the selected collection have restarted within the last seven days



**Information on Windows cumulative updates**

Source: Community curated CUIPivot Query


This pie chart shows how many devices have different Windows cumulative update levels. With the information, you can easily identify how many devices don't have the latest cumulative update installed.



**Configure Edge Auto Update**

Source: Microsoft curated Script


This script allows admins to toggle auto update on/off on client devices



**Logical Disk per Device Chart**

Source: Microsoft curated CUIPivot Query

Shows logical disk free space per device.




**Recently used applications**

Source: Microsoft curated CUIPivot Query

Shows recently used application in the selected collection.

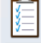
### Latest Updates



**Find clients with Last SMS/UD Change date today**

Source: Community unreviewed CUIPivot Query


Find clients with last sms/ud changed today. Just change the date to the actual day. Follow me on Twitter: @zvensch



**Enable BitLocker - OS Drive**

Source: Community unreviewed Task Sequence


Enable BitLocker - OS Drive



**Item\_ResetDirtyShutdown**

Source: Community unreviewed Configuration Item


After an unexpected shutdown the shutdown event tracker keeps appearing ... the solution is to clear all the values (like DirtyShutdown, LastAliveStamp, ... should not be popping up, unless there is a ...



**Clear Ccmcache Windows 10**

Source: Community unreviewed Configuration Item

when this Configuration Element deployed, the CCM cache will be deleted every 14 Days



**Get Battery % for all Users**

Source: Community unreviewed CUIPivot Query

this script helps you get the Battery % for a specific users group

What's New | Assets and Compliance | Software Library | Monitoring | Administration | Community



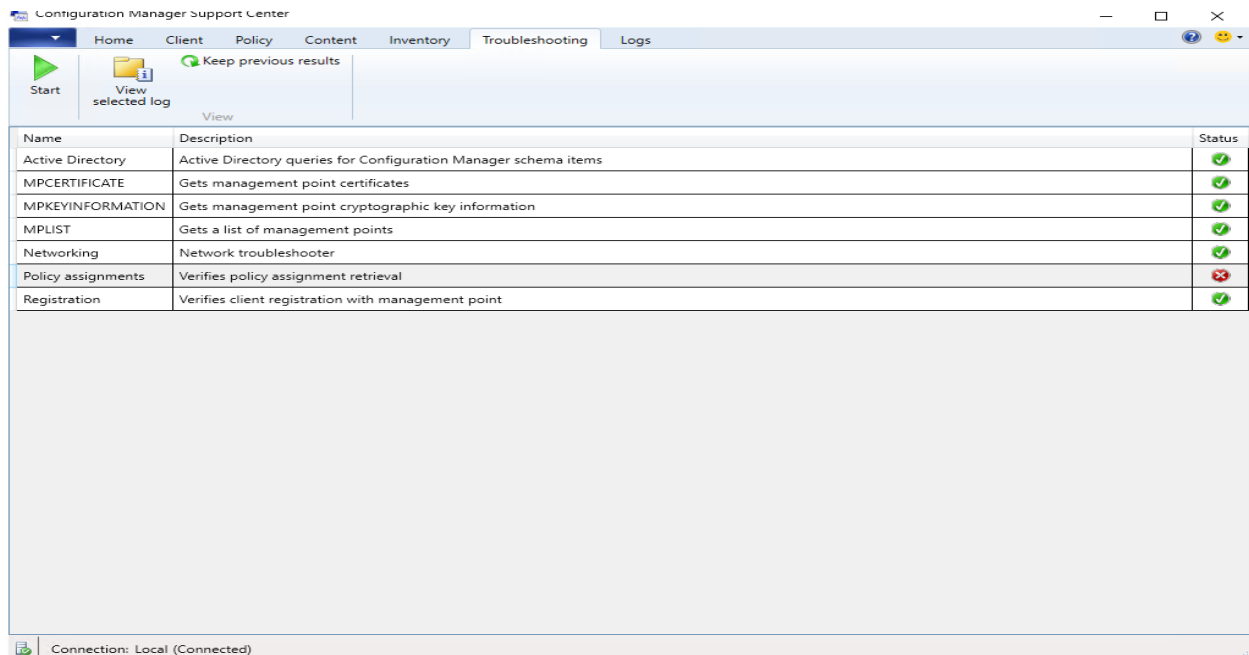
**Improvements to Support Center** - Support Center already shows updates which are targeted to your device but are not yet installed. In this release, to assist in troubleshooting you now have a list of all updates targeted to the device, including information about whether the update is installed or missing. Additionally, Support Center now shows the available maintenance windows for the device.

When you troubleshoot software update deployments, you might ask the following questions:

- Are any updates missing or failing?
- Are specific updates deployed to a device?
- What are the error codes for a deployment?
- Why didn't the device reboot during a maintenance window?
- What's the current state of an update?

Support Center already shows updates that are targeted to the device but not yet installed. Now in this release, select **All Updates** on the **Content** tab of Support Center to show all updates targeted to the device. To help you troubleshoot, this list includes information about whether the update is installed or missing.

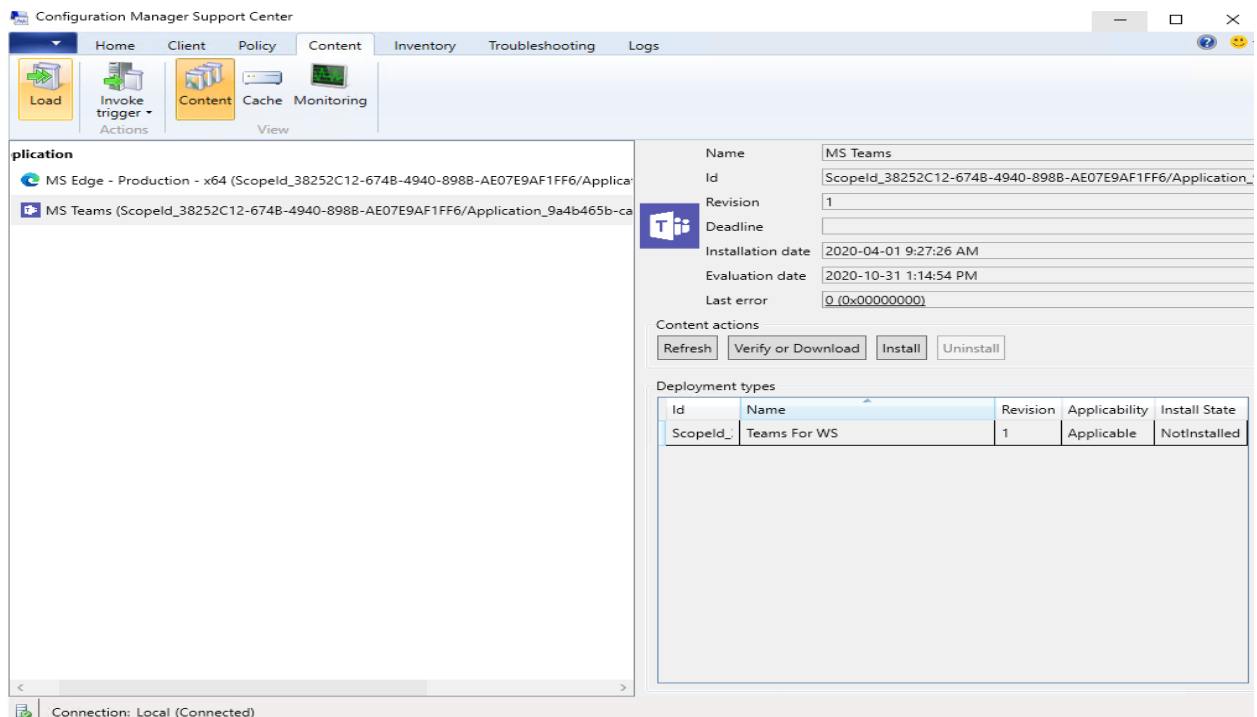
Also on the **Content** tab, select **Maintenance Windows** to show the available maintenance windows for the device.



The screenshot shows the Configuration Manager Support Center window with the 'Troubleshooting' tab selected. The window has a ribbon with 'Home', 'Client', 'Policy', 'Content', 'Inventory', 'Troubleshooting', and 'Logs'. The 'Troubleshooting' ribbon has 'Start', 'View selected log', and 'Keep previous results' buttons. Below the ribbon is a table with the following data:

Name	Description	Status
Active Directory	Active Directory queries for Configuration Manager schema items	✓
MPCERTIFICATE	Gets management point certificates	✓
MPKEYINFORMATION	Gets management point cryptographic key information	✓
MPLIST	Gets a list of management points	✓
Networking	Network troubleshooter	✓
Policy assignments	Verifies policy assignment retrieval	✗
Registration	Verifies client registration with management point	✓

At the bottom of the window, it says 'Connection: Local (Connected)'.



The screenshot shows the Configuration Manager Support Center window with the 'Content' tab selected. The window has a ribbon with 'Home', 'Client', 'Policy', 'Content', 'Inventory', 'Troubleshooting', and 'Logs'. The 'Content' ribbon has 'Load', 'Invoke trigger', 'Content', 'Cache', and 'Monitoring' buttons. Below the ribbon is a list of applications:

- MS Edge - Production - x64 (ScopelId\_38252C12-674B-4940-898B-AE07E9AF1FF6/Application\_...)
- MS Teams (ScopelId\_38252C12-674B-4940-898B-AE07E9AF1FF6/Application\_9a4b465b-ca...

On the right side, there is a details pane for the selected application, 'MS Teams'. It shows the following information:

- Name: MS Teams
- Id: ScopelId\_38252C12-674B-4940-898B-AE07E9AF1FF6/Application\_...
- Revision: 1
- Deadline:
- Installation date: 2020-04-01 9:27:26 AM
- Evaluation date: 2020-10-31 1:14:54 PM
- Last error: 0 (0x00000000)

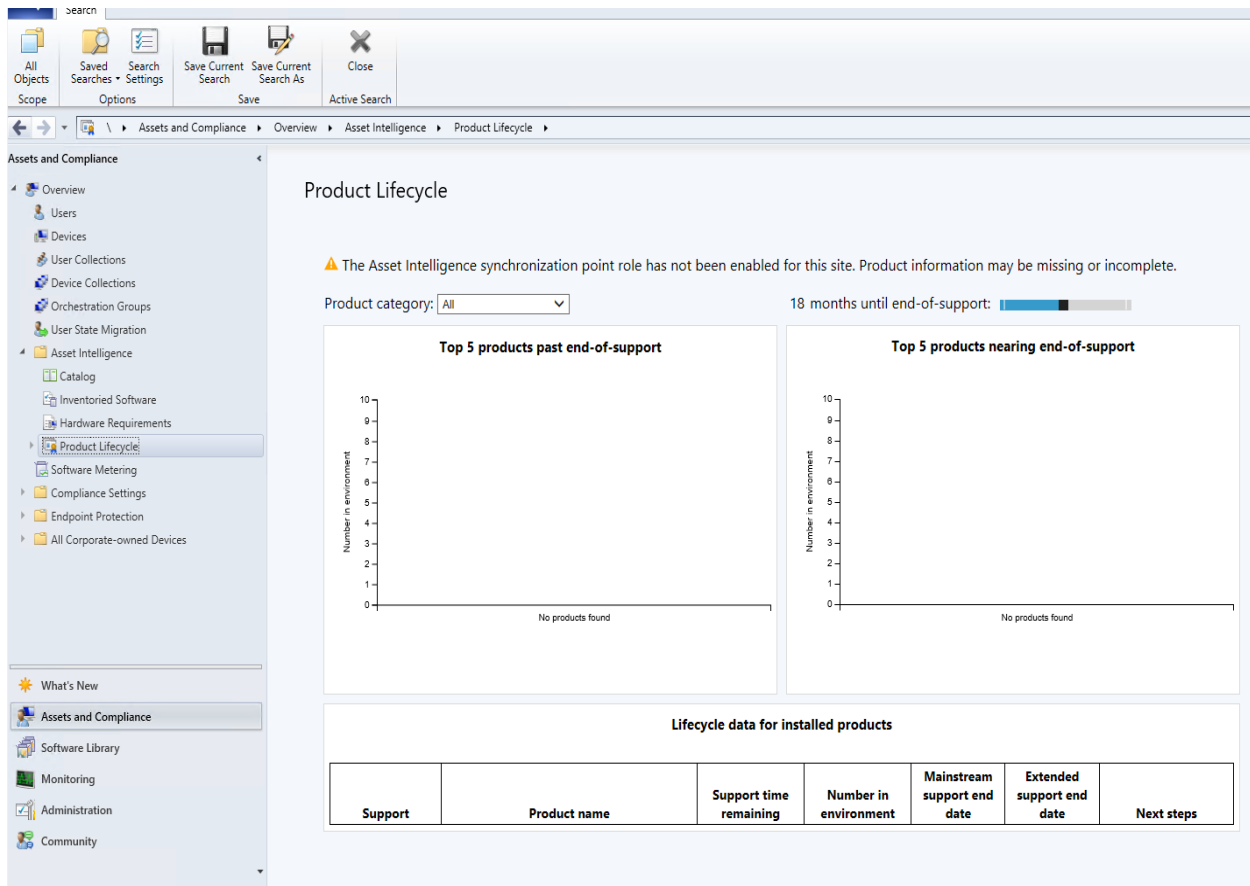
Below the details pane, there are 'Content actions' buttons: 'Refresh', 'Verify or Download', 'Install', and 'Uninstall'.

At the bottom, there is a 'Deployment types' table with the following data:

Id	Name	Revision	Applicability	Install State
ScopelId_...	Teams For WS	1	Applicable	NotInstalled

At the bottom of the window, it says 'Connection: Local (Connected)'.

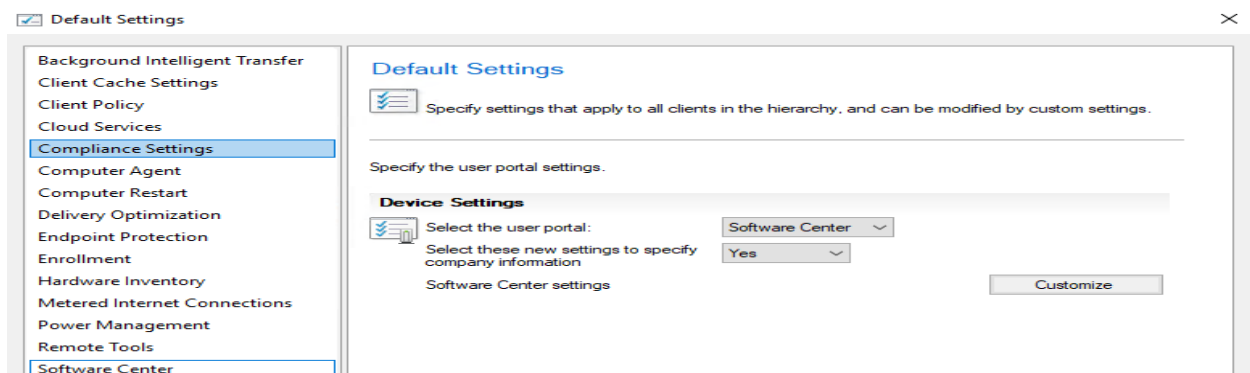
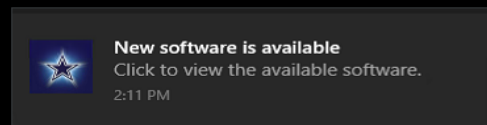
**Improvements to the Product Lifecycle dashboard** - The product lifecycle dashboard has been extended with a new console node that is sortable and filterable giving you multiple ways to view product lifecycle information. From the new node you can view a set of devices and take actions such as creating collections, installing applications, running scripts, client notifications and diagnostics. The dashboard itself has a new time slider that gives you control over the timescale used for viewing the charts.

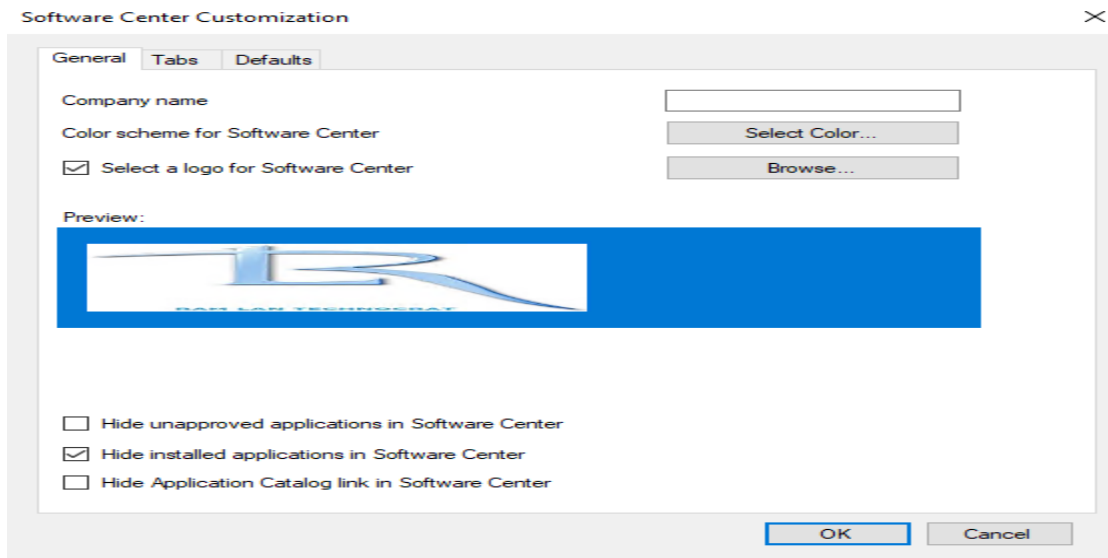


**Software Center notifications display with logo** - If you enable Software Center customizations, then notifications display the logo that you configure in client settings.

If you enable Software Center customizations, then notifications on Windows 10 devices display the logo that you configure in client settings. This change helps users to trust these notifications.

When you deploy software to a client, the user sees notifications with your logo. The following example uses a star logo:





**Windows 10 Dashboard Revamp** - Added Quality Update Version and Feature Update Version charts, and Latest Build Gauge Chart. I was not able to find anything with TP 2011 console. May be, I am missing something or not looking at the right area. Will do some research this weekend.

### Improvements to OS deployment

This release includes the following improvements to OS deployment:

- Based on your **UserVoice feedback**, task sequence conditions now include a **not like** operator. This operator applies to task sequence variable conditions. It's also used in the **Set Dynamic Variable** task sequence step.
- Based on your **UserVoice feedback**, this release fixes issues with the **SMSTSDisableStatusRetry** task sequence variable.
- Based on your **UserVoice feedback**, the **Check Readiness** task sequence step now also checks free space on disks without partitions.
- Based on your **UserVoice feedback**, the following PowerShell cmdlets now have an **Index** parameter:
  - New-CMOperatingSystemImage**: When you run this cmdlet with the new **Index** parameter, it creates a new single-index image file in the same source folder.
  - New-CMOperatingSystemInstaller** (alias **New-CMOperatingSystemUpgradePackage**): When you run this cmdlet with the new **Index** parameter, it replaces the original image file in the source folder with a single-index image file.
- Based on your **UserVoice feedback**, the following new cmdlets are available to get the list of existing hardware IDs in the site database:
  - Get-CMDuplicateHardwareIdGuid**
  - Get-CMDuplicateHardwareIdMacAddress**

These new cmdlets supplement the existing cmdlets to add and remove duplicate IDs. For more information, see **Version 1910 PowerShell release notes**.

### Update PowerShell help

You can now use the **Update-Help** cmdlet to get the latest information for the Configuration Manager PowerShell module. This content is the same as what's published on docs.microsoft.com for the **ConfigurationManager module**.

The computer on which you run this cmdlet needs internet access, specifically `pshelpprod.blob.core.windows.net`. Then run the following command:

```
PowerShell
Update-Help -Module ConfigurationManager
```

Then use the **Get-Help** cmdlet, for example:

```
PowerShell
Get-Help Get-CMDevice
Get-Help Get-CMDevice -Examples
Get-Help Get-CMDevice -Parameter *
```

Update-Help -Module ConfigurationManager

Get-Help Get-CMDevice

Get-Help Get-CMDevice -Examples

Get-Help Get-CMDevice -Parameter \*

This concludes TP 2011 install.

Thanks

Ram Lan

24<sup>th</sup> Nov 2020