

Deploying Windows 10 v20H2 through Configuration Manager

In this post, I will carry out the following:

1. Create task sequence
2. Deploy task sequence
3. Create virtual machine
4. Test the deployment

I will be using a virtual machine for testing. If you want to test on a physical hardware go ahead.

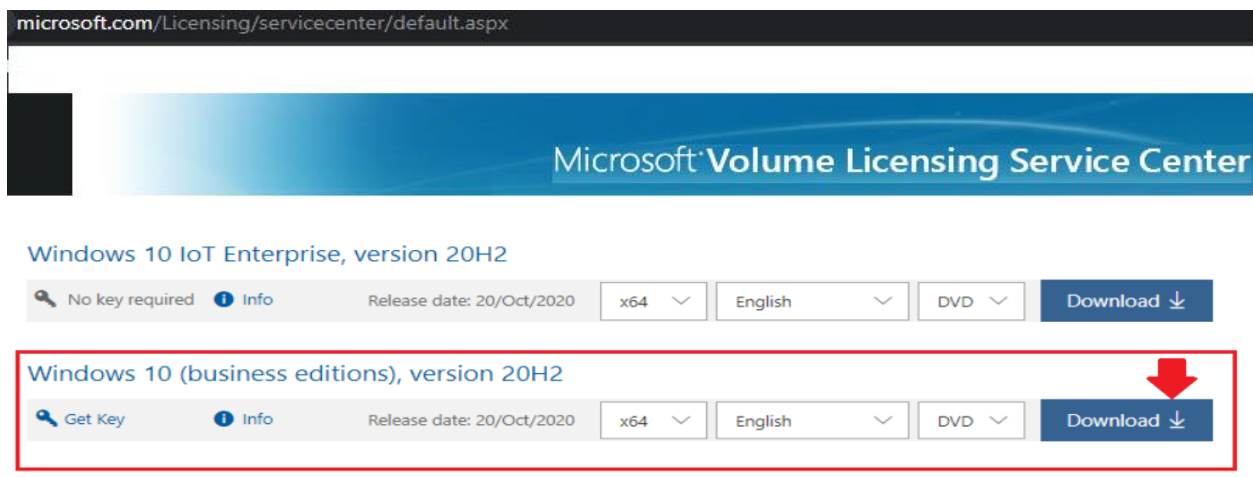
Deployment process:

- Start the setup from boot media (CD, USB, ISO or PXE)
- Wipe the hard disk for clean install
- Install the operating System
- Apply device drivers - If you are testing on physical hardware
- Install Applications
- Apply customization and additional settings, if required

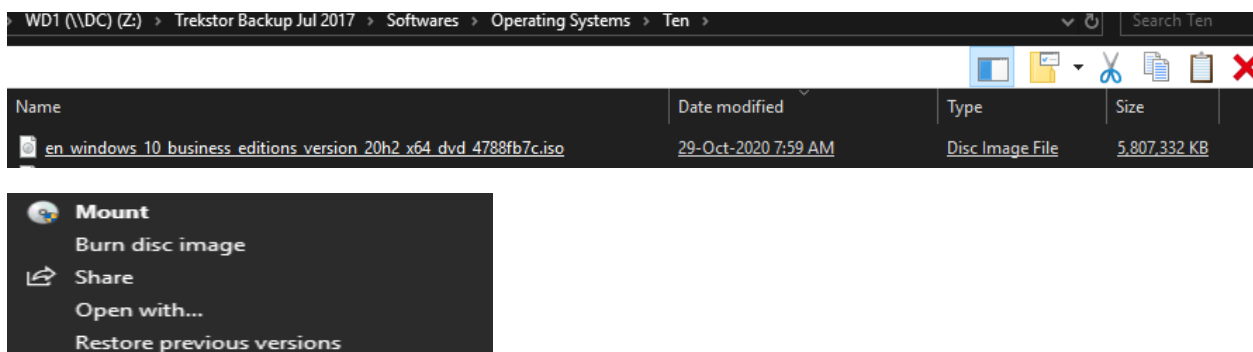
Prerequisites:

- 🔧 Ensure you are running latest Current Branch
- 🔧 Boot images are updated
- 🔧 Make sure you have added network and storage drivers to boot image
- 🔧 Boot image deployment from a PXE enabled Distribution Point

I was able to download Win 10 20H2 from Microsoft site.



Mount the ISO.

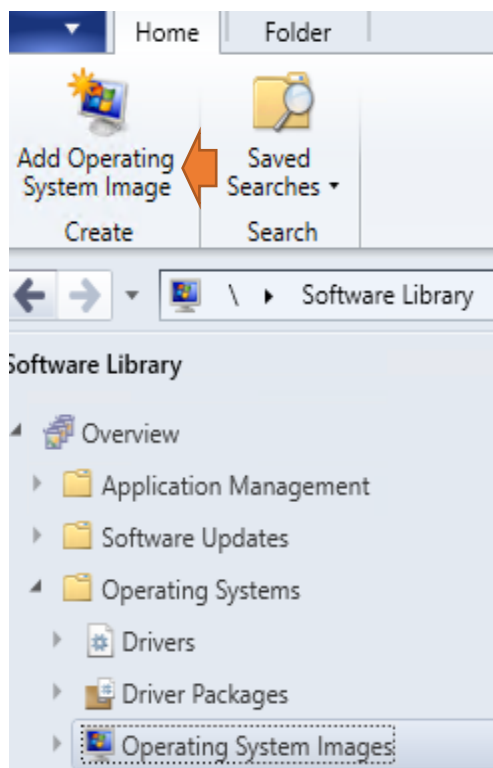


Copy the contents to sccm server. I created a folder TEN20H2 in Sources Folder.

| Name | Date modified | Type | Size |
|-------------|----------------------|-------------------|----------|
| boot | 27-Sep-2020 4:57 ... | File folder | |
| efi | 27-Sep-2020 4:57 ... | File folder | |
| sources | 27-Sep-2020 4:57 ... | File folder | |
| support | 27-Sep-2020 4:57 ... | File folder | |
| autorun.inf | 27-Sep-2020 4:51 ... | Setup Information | 1 KB |
| bootmgr | 27-Sep-2020 4:51 ... | File | 405 KB |
| bootmgr.efi | 27-Sep-2020 4:51 ... | EFI File | 1,506 KB |
| setup.exe | 27-Sep-2020 4:51 ... | Application | 73 KB |

CB > OS (C:) > Sources > OSD > OS > TEN20H2

| Name | Date modified | Type | Size |
|-------------|----------------------|-------------------|----------|
| boot | 29-Oct-2020 8:44 ... | File folder | |
| efi | 27-Sep-2020 4:57 ... | File folder | |
| sources | 29-Oct-2020 8:44 ... | File folder | |
| support | 27-Sep-2020 4:57 ... | File folder | |
| autorun.inf | 27-Sep-2020 4:51 ... | Setup Information | 1 KB |
| bootmgr | 27-Sep-2020 4:51 ... | File | 405 KB |
| bootmgr.efi | 27-Sep-2020 4:51 ... | EFI File | 1,506 KB |
| setup.exe | 27-Sep-2020 4:51 ... | Application | 73 KB |





Data Source

Data Source

General

Summary

Progress

Completion

Browse to the data source for the operating system image

Specify the path to the operating system image file.

Path:

\\cb\Sources\OSD\OS\TEN20H2\sources\install.wim

Browse...

Example: \\servername\sharename\path\file.WIM

☒ Extract a specific image index from the specified WIM file

Image index:

3 - Windows 10 Enterprise



Selecting a specific image will result in Configuration Manager exporting the index as a new WIM file in the same directory as the source image.

If the selected architecture and language matches that of the client, the package content will be downloaded in advance.

Architecture:

☐ x86

☒ x64

Language:

English (United States)

< Previous

Next >

Summary

Cancel



General

Data Source

General

Summary

Progress

Completion

Type general information for the operating system image

Provide a name, version, and comment for the operating system image.

Name:

Windows 10 x64

Version:

20H2

Comment:

Deploy Windows 10 x64 20H2 - Release Date Oct 2020

< Previous

Next >

Summary

Cancel

Add Operating System Image Wizard



Summary

Data Source

General

Summary

Progress

Completion

To create the Operating System Image, click Next

Details:

Data Source Information

- Source location: \\cb\Sources\OSD\OS\TEN20H2\sources\install.wim

Index Export Information

- Image Index: 3
- Image Index Name: Windows 10 Enterprise
- Destination Location: \\cb\Sources\OSD\OS\TEN20H2\sources\install-3-Windows-10-Enterprise.wim

Package Information

- Name: Windows 10 x64
- Version: 20H2
- Comment: Deploy Windows 10 x64 20H2 - Release Date Oct 2020

To change these settings, click Previous. To apply the settings, click Next.

< Previous

Next >

Summary

Cancel

Add Operating System Image Wizard



Completion

Data Source

General

Summary

Progress

Completion



The Add Operating System Image Wizard completed successfully

Details:



Success: Data Source Information

- Source location: \\cb\Sources\OSD\OS\TEN20H2\sources\install.wim



Success: Index Export Information

- Image Index: 3
- Image Index Name: Windows 10 Enterprise
- Destination Location: \\cb\Sources\OSD\OS\TEN20H2\sources\install-3-Windows-10-Enterprise.wim



Success: Package Information

- Name: Windows 10 x64
- Version: 20H2
- Comment: Deploy Windows 10 x64 20H2 - Release Date Oct 2020

To exit the wizard, click Close.

< Previous

Next >

Summary

Close

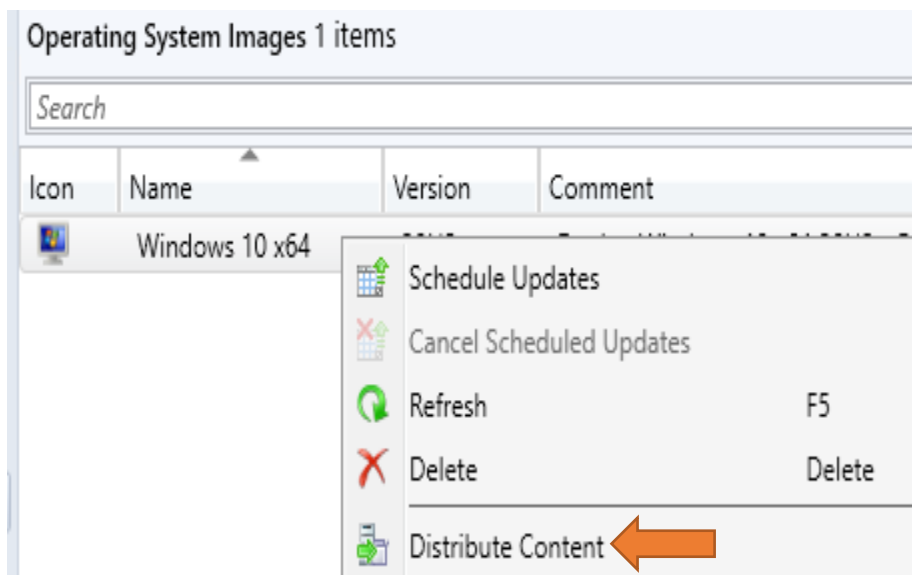
Overview > Operating Systems > Operating System Images >

Operating System Images 1 items

Search

| Icon | Name | Version | Comment | Image ID | OS Version |
|------|----------------|---------|--|----------|----------------|
| | Windows 10 x64 | 20H2 | Deploy Windows 10 x64 20H2 - Release Date Oct 2020 | TOR001C0 | 10.0.19041.508 |

Time to distribute content



Distribute Content Wizard



General

General

- Content Destination
- Summary
- Progress
- Completion

Review selected content

You have selected the following content for distribution.

Content:

Some content might have associated dependencies that must be installed before the content can be installed.

☐ Detect associated content dependencies and add them to this distribution

< Previous **Next >** Summary Cancel



Content Destination

General

Content Destination

Summary

Progress

Completion

Specify the content destination

Content will be distributed to the following distribution points, distribution point groups, and the distribution point groups that are currently associated with collections.

Content destination:

| Name | Description | Associations |
|----------------|--------------------|--------------|
| CB.RAMLAN.CA | Distribution point | |
| WIN8.RAMLAN.CA | Distribution point | |

Filter... 🔍 Add ▼ Remove

< Previous

Next >

Summary

Cancel

I have cloud distribution point in Azure. I am not going to use it because it will cost money for bandwidth. Not worth spending money for testing a deployment.

Add Distribution Points



Select distribution points that will host this content.

Available distribution points:

| Name | Type | Description |
|---|-------|-------------|
| <input type="checkbox"/> RAMLANCMG.CLOUDAPP.NET | Cloud | |

Filter... 🔍



Summary

General

Content Destination

Summary

Progress

Completion

Confirm the settings

Details:

- Content (1):
- Windows 10 x64
- Collections (0):
- Distribution point groups (0):
- Distribution points (2):
- CB.RAMLAN.CA
 - WIN8.RAMLAN.CA

To change these settings, click Previous. To apply the settings, click Next.

< Previous

Next >

Summary

Cancel



Completion

General

Content Destination

Summary

Progress

Completion



The Distribute Content Wizard completed successfully

Details:

- Content (1):
- Windows 10 x64
- Collections (0):
- Distribution point groups (0):
- Distribution points (2):
- CB.RAMLAN.CA
 - WIN8.RAMLAN.CA

To exit the wizard, click Close.

< Previous

Next >

Summary

Close



Content Status

Content Distribution: Windows 10 x64

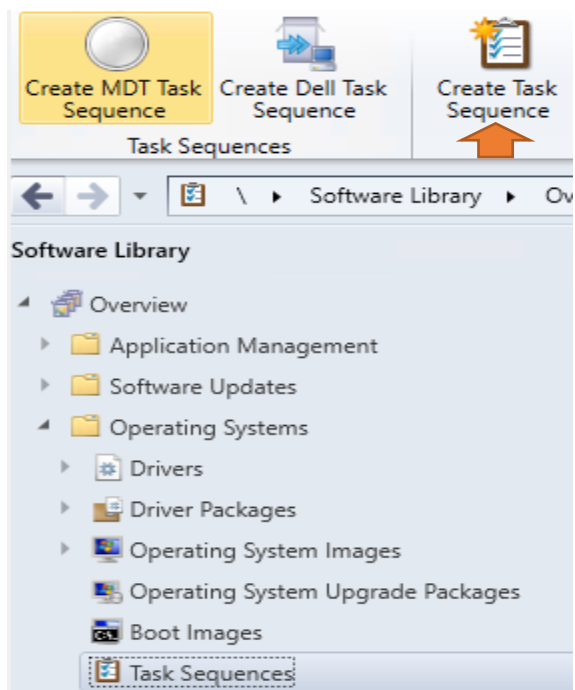
● Success ● In Progress ● Error ● Unknown

| Status | Assets | Status Type |
|----------------------------------|--------|-------------|
| Successfully distributed content | 2 | Success |

Asset Details

| Filter | | | |
|----------------|---------------------|----------------|---|
| Device | Last Status Time | Group Targeted | Description |
| WIN8.RAMLAN.CA | 29-Oct-2020 8:58 AM | No | Distribution Manager successfully distributed package "TOR001C0" to distribution point "[Dis... |
| CB.RAMLAN.CA | 29-Oct-2020 8:53 AM | Yes | Distribution Manager successfully distributed package "TOR001C0" to distribution point "[Dis... |

Create Task Sequence



Create Task Sequence Wizard



Create New Task Sequence

Create New Task Sequence

Create a new task sequence

A task sequence performs multiple steps or actions on a client computer at the command-line level without requiring user intervention. Select the type of task sequence to create. You can use the task sequence editor to add steps to your task sequence.

Select a new task sequence to be created.

- ☒ Install an existing image package
- ☐ Build and capture a reference operating system image
- ☐ Upgrade an operating system from an upgrade package
- ☐ Deploy Windows Autopilot for existing devices
- ☐ Create a new custom task sequence

< Previous **Next >** Summary Cancel



Task Sequence Information

Create New Task Sequence

Task Sequence Information

Install Windows

Configure Network

Install Configuration Mar

State Migration

Include Updates

Install Applications

Summary

Progress

Completion

Specify task sequence information

Task sequence name:

Deploy Win 10 20H2

Description:

Boot image:

Boot image (x86) 10.0.19041.1

Browse...

☒ Run as high performance power plan

< Previous

Next >

Summary

Cancel



Install Windows

Create New Task Sequence

Task Sequence Information

Install Windows

Configure Network

Install Configuration Mar

State Migration

Include Updates

Install Applications

Summary

Progress

Completion

Install the Windows operating system

Specify the Windows operating system image and installation information.

Image package:

Windows 10 x64 20H2 en-US

Browse...

Image index:

1 - Windows 10 Enterprise

☒ Partition and format the target computer before installing the operating system.☒ Configure task sequence for use with BitLocker

Specify the licensing information for the Windows installation.

Product key:

Server licensing mode:

Do not specify

Maximum server connections:

5

☐ Randomly generate the local administrator password and disable the account on all supported platforms (recommended)☒ Enable the account and specify the local administrator password

Password:

Confirm password:

< Previous

Next >

Summary

Cancel



Configure Network

- Create New Task Sequence
- Task Sequence Information
- Install Windows
- Configure Network**
- Install Configuration Manager
- State Migration
- Include Updates
- Install Applications
- Summary
- Progress
- Completion

Configure the network

Select the domain or workgroup to join.

☐ Join a workgroup

Workgroup:

☒ Join a domain

Domain:

RAMLAN.CA

Browse...

Domain OU:

LDAP://OU=Workstations,OU=Lab,DC=RAM

Browse...

Specify the account that has permission to join the domain.

Account:

RAMLAN\Administrator

Set...

< Previous

Next >

Summary

Cancel



Install Configuration Manager

- Create New Task Sequence
- Task Sequence Information
- Install Windows
- Configure Network
- Install Configuration Manager**
- State Migration
- Include Updates
- Install Applications
- Summary
- Progress
- Completion

Install the Configuration Manager client

Specify the Configuration Manager client package. Configuration Manager site assignment and client configuration is done automatically. You can specify additional installation properties.

Package:

Configuration Manager Client Package

Browse...

Installation properties:

FSP=RAMLAN.CA

< Previous

Next >

Summary

Cancel



State Migration

- Create New Task Sequence
- Task Sequence Information
- Install Windows
- Configure Network
- Install Configuration Manager
- State Migration**
- Include Updates
- Install Applications
- Summary
- Progress
- Completion

Configure state migration

Select the settings on the destination computer to migrate as part of this image deployment.

This action will capture the user specific settings.

- ☒ Capture user settings and files

USMT Package:

- ☒ Save user settings and files on a State Migration Point

- ☐ Save user settings and files locally

☒ Capture locally by using links instead of by copying files

This action will capture the configuration of the network.

- ☒ Capture network settings

This action will capture the Windows specific settings.

- ☒ Capture Microsoft Windows settings



Include Updates

- Create New Task Sequence
- Task Sequence Information
- Install Windows
- Configure Network
- Install Configuration Manager
- State Migration
- Include Updates**
- Install Applications
- Summary
- Progress
- Completion

Include software updates

Install software updates based on the type of software update deployment:

- ☐ Required for installation - Mandatory software updates only

- ☐ Available for installation - All software updates

- ☒ Do not install any software updates



Install Applications

Create New Task Sequence

Task Sequence Information

Install Windows

Configure Network

Install Configuration Manager

State Migration

Include Updates

Install Applications

Summary

Progress

Completion

Install applications

Select the applications to be run with this operating system image.

Applications:



| Application name | Description |
|---------------------------------|-------------|
| 7-Zip 18.06 (x64 edition) | |
| Adobe Acrobat Reader DC | |
| VLC media player 3.0.6 (64-bit) | |

☐ If an application installation fails, continue installing other applications in the list

< Previous

Next >

Summary

Cancel



Summary

Create New Task Sequence

Task Sequence Information

Install Windows

Configure Network

Install Configuration Manager

State Migration

Include Updates

Install Applications

Summary

Progress

Completion

Confirm the settings

Details:

Verify the following task sequence details.

Create a new task sequence

- Name: Deploy Win 10 20H2
- Run as high performance power plan: Yes
- Boot Image: Boot image (x86) 10.0.19041.1

Install the Windows operating system

- Image package: Windows 10 x64 20H2 en-US
- Image index: 1 - Windows 10 Enterprise
- Partition and format target computer: Yes
- Enable BitLocker: Yes
- Server licensing mode: Do not specify
- Use random password: No

Configure the network

- Join domain: RAMLAN.CA
- Domain OU: LDAP://OU=Workstations,OU=Lab,DC=RAMLAN,DC=CA
- Account: RAMLAN\Administrator

Install the Configuration Manager client

- Package: Configuration Manager Client Package
- Installation properties: FSP=RAMLAN.CA

Configure state migration

To change these settings, click Previous. To apply the settings, click Next.

< Previous

Next >

Summary

Cancel



Completion

Create New Task Sequence

Task Sequence Information

Install Windows

Configure Network

Install Configuration Manager

State Migration

Include Updates

Install Applications

Summary

Progress

Completion



The Create Task Sequence Wizard completed successfully

Details:



Success: The task sequence has been created successfully.



Success: Create a new task sequence

- Name: Deploy Win 10 20H2
- Run as high performance power plan: Yes
- Boot Image: Boot image (x86) 10.0.19041.1



Success: Install the Windows operating system

- Image package: Windows 10 x64 20H2 en-US
- Image index: 1 - Windows 10 Enterprise
- Partition and format target computer: Yes
- Enable BitLocker: Yes
- Server licensing mode: Do not specify
- Use random password: No



Success: Configure the network

- Join domain: RAMLAN.CA
- Domain OU: LDAP://OU=Workstations,OU=Lab,DC=RAMLAN,DC=CA
- Account: RAMLAN\Administrator

To exit the wizard, click Close.

< Previous

Next >

Summary

Close

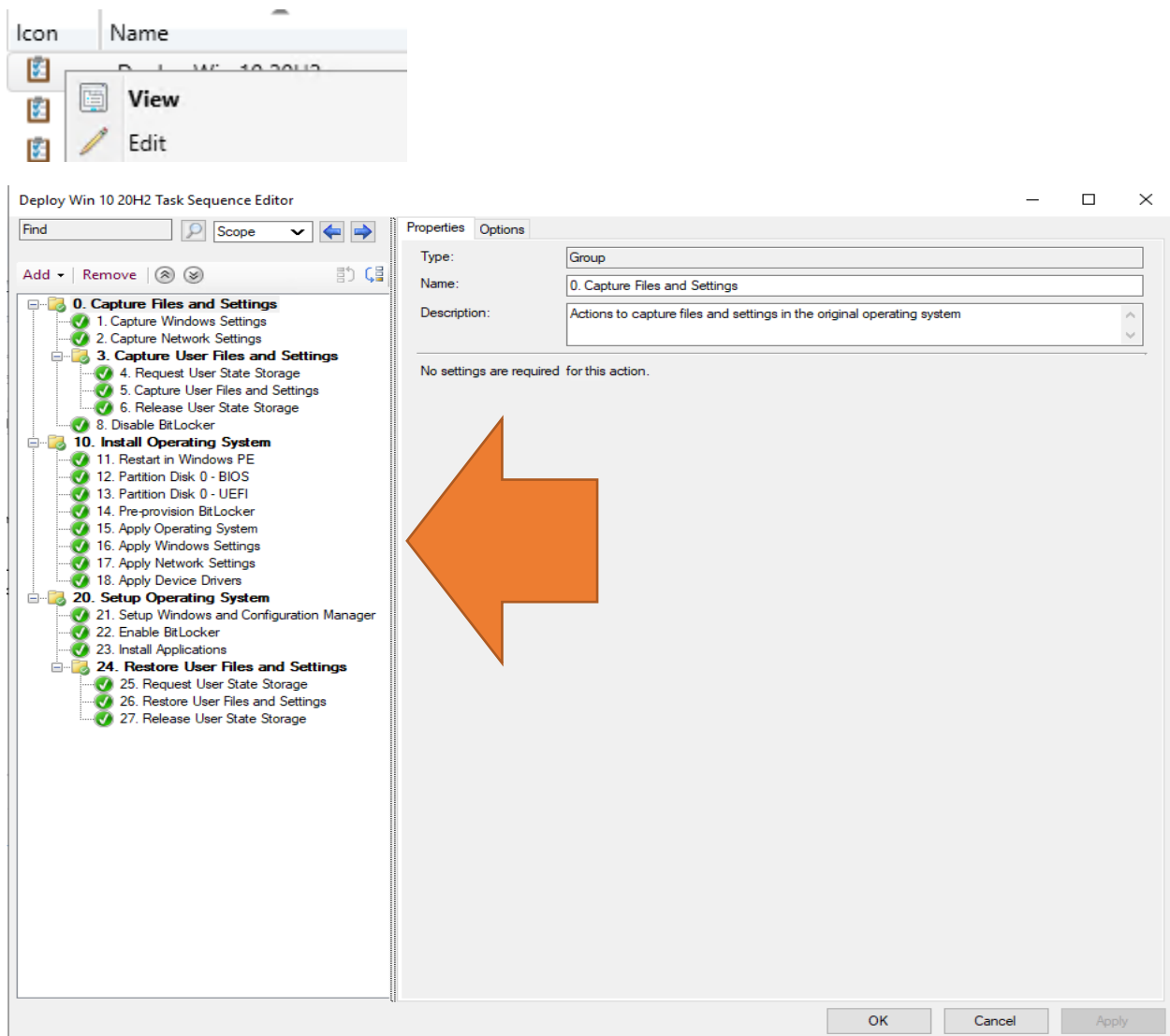
Overview > Operating Systems > Task Sequences

Task Sequences 11 items

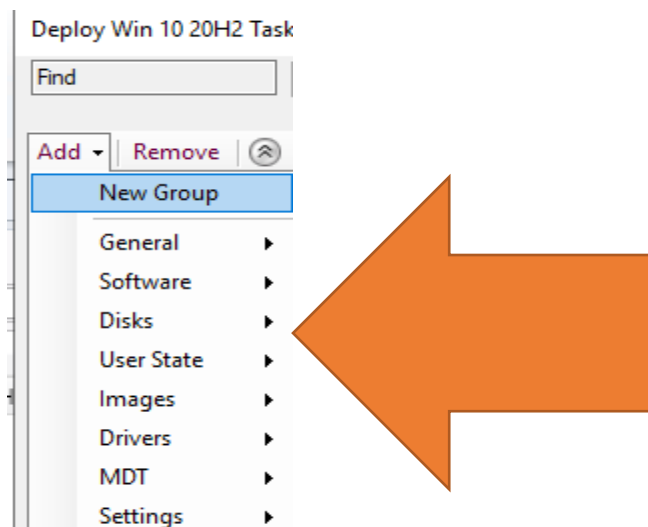
Search

| Icon | Name | Description | Package ID | Date Created |
|------|--------------------|---|------------|---------------------|
| | Deploy Win 10 20H2 | Deploying Windows 10 20H2 - Release Date Oct 2020 | TOR001C1 | 29-Oct-2020 9:11 AM |

When you edit the task sequence it looks like this



When you drop down Add button – You have these options to choose from – You can insert any of the steps into the task sequence at the right place. You can even create your own group as well. Pretty user friendly.



Deploy the task sequence

The screenshot shows the Windows Deployment Toolkit interface. At the top, a ribbon contains various actions: 'Create Task Sequence Media', 'Import Task Sequence', 'Saved Searches', 'Task Sequence Steps' (highlighted), 'View', 'Edit', 'Enable', 'Disable', 'Export', 'Copy', 'Refresh', 'Delete', and 'Deploy'. An orange arrow points from the 'Deploy' button in the ribbon to the 'Deploy Win 10 20H2' task sequence in the list below.

Below the ribbon, the breadcrumb path is 'Overview > Operating Systems > Task Sequences'. A section titled 'Task Sequences 11 items' contains a search bar and a table with the following data:

| Icon | Name | Description |
|------|--------------------|---|
| | Deploy Win 10 20H2 | Deploying Windows 10 20H2 - Release Date Oct 2020 |

Below the table, the 'Deploy Software Wizard' is open, showing the 'General' tab. The wizard title is 'Specify general information for this deployment'. The left sidebar lists the following steps: General (selected), Deployment Settings, Scheduling, User Experience, Alerts, Distribution Points, Summary, Progress, and Completion.

The main area of the wizard contains the following fields and options:

- Task sequence:** A text box containing 'Deploy Win 10 20H2' and a 'Browse...' button.
- Collection:** A text box containing 'All Unknown Computers' and a 'Browse...' button. An orange arrow points to this text box.
- ☐ Use default distribution point groups associated to this collection
- ☐ Automatically distribute content for dependencies
- ☐ Pre-download content for this task sequence
- A paragraph: 'Select a previously saved deployment template that defines configuration settings for this deployment. Before you complete this wizard, you have the option to save the current configurations as a new deployment template.'
- A button: 'Select Deployment Template...'
- Comments (optional):** A large text area for entering comments.

At the bottom of the wizard, there are four buttons: '< Previous', 'Next >', 'Summary', and 'Cancel'.



Deployment Settings

General

Deployment Settings

Scheduling

User Experience

Alerts

Distribution Points

Summary

Progress

Completion

Specify settings to control how this software is deployed

Action: Purpose:

Specify whether to make this task sequence available to Configuration Manager clients, and whether it is available to run when you deploy an operating system by using boot media, prestaged media, or PXE.

Make available to the following:

< Previous

Next >

Summary

Cancel

Note – Use the **Only media and PXE (hidden)** setting for automated task sequence deployments. To have the computer automatically boot to the deployment without user interaction, select **Allow unattended operating system deployment** and set the **SMSTSPreferredAdvertID** variable as part of the media.



User Experience

General

Deployment Settings

Scheduling

User Experience

Alerts

Distribution Points

Summary

Progress

Completion

Specify the user experience for the installation of this software on the selected devices

Notification settings:

☒ Allow users to run the program independently of assignments☒ Show Task Sequence progress

When the scheduled assignment time is reached, allow the following activities to be performed outside the maintenance window:

☐ Software installation☐ System restart (if required to complete the installation)

Write filter handling for Windows Embedded devices

☒ Commit changes at deadline or during a maintenance window (requires restarts)

If this option is not selected, content will be applied on the overlay and committed later.

Internet based clients:

☐ Allow task sequence to run for client on the Internet

< Previous

Next >

Summary

Cancel



Distribution Points

- General
- Deployment Settings
 - Scheduling
 - User Experience
 - Alerts
 - Distribution Points**
- Summary
- Progress
- Completion

Specify how to run the content for this program

Specify how clients interact with the distribution points to retrieve content from packages referred by the task sequence:

Deployment options:

Download content locally when needed by the running task sequence

Clients will always try to get content from distribution points in current boundary group. In addition, interaction with distribution points in neighbor boundary group can be controlled:

☐ Allow clients to use distribution points from the neighbor boundary group

When this content is not available on any distribution points in current and neighbor boundary groups, you can allow the client to use a distribution point in site default boundary group.

☐ Allow clients to use distribution points from the default site boundary group



Token based authentication (recommended) or a network access account must be configured to access content from Windows PE

< Previous

Next >

Summary

Cancel



Summary

- General
- Deployment Settings
 - Scheduling
 - User Experience
 - Alerts
 - Distribution Points
 - Summary**
- Progress
- Completion

Confirm the settings for this new deployment

Details:

Save As Template...

General

- Software: Deploy Win 10 20H2
- Collection: All Unknown Computers (Member Count: 2)
- Use default distribution point groups associated to this collection: Disabled
- Automatically distribute content for dependencies: Disabled
- Pre-download content for this task sequence: Disabled

Deployment Settings

- Action: Install
- Purpose: Available
- Task sequence deployment option: Only media and PXE
- Allow clients to use a metered Internet connection to download content: Disabled

Scheduling

- Schedule when this deployment will become available: Disabled
- Schedule when this deployment will expire: Disabled
- Rerun behavior: Always rerun program

User Experience

- Allow users to run the program independently of assignments: Enabled
- Software installation: Disabled
- System restart (if required to complete the installation): Disabled
- Allow task sequence to run for client on the Internet: Disabled
- Commit changes at deadline or during a maintenance window (requires restarts): Enabled
- Show Task Sequence progress: Enabled

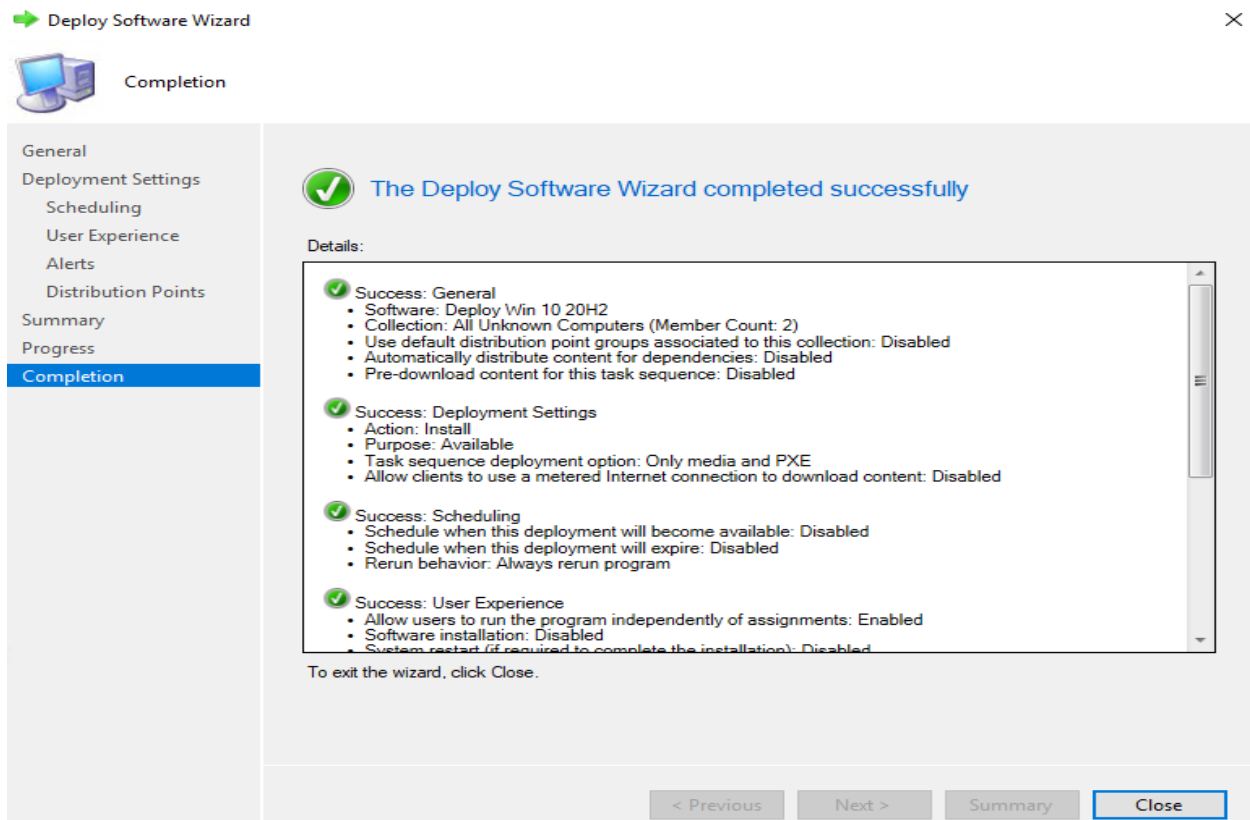
To change these settings, click Previous. To apply the settings, click Next.

< Previous

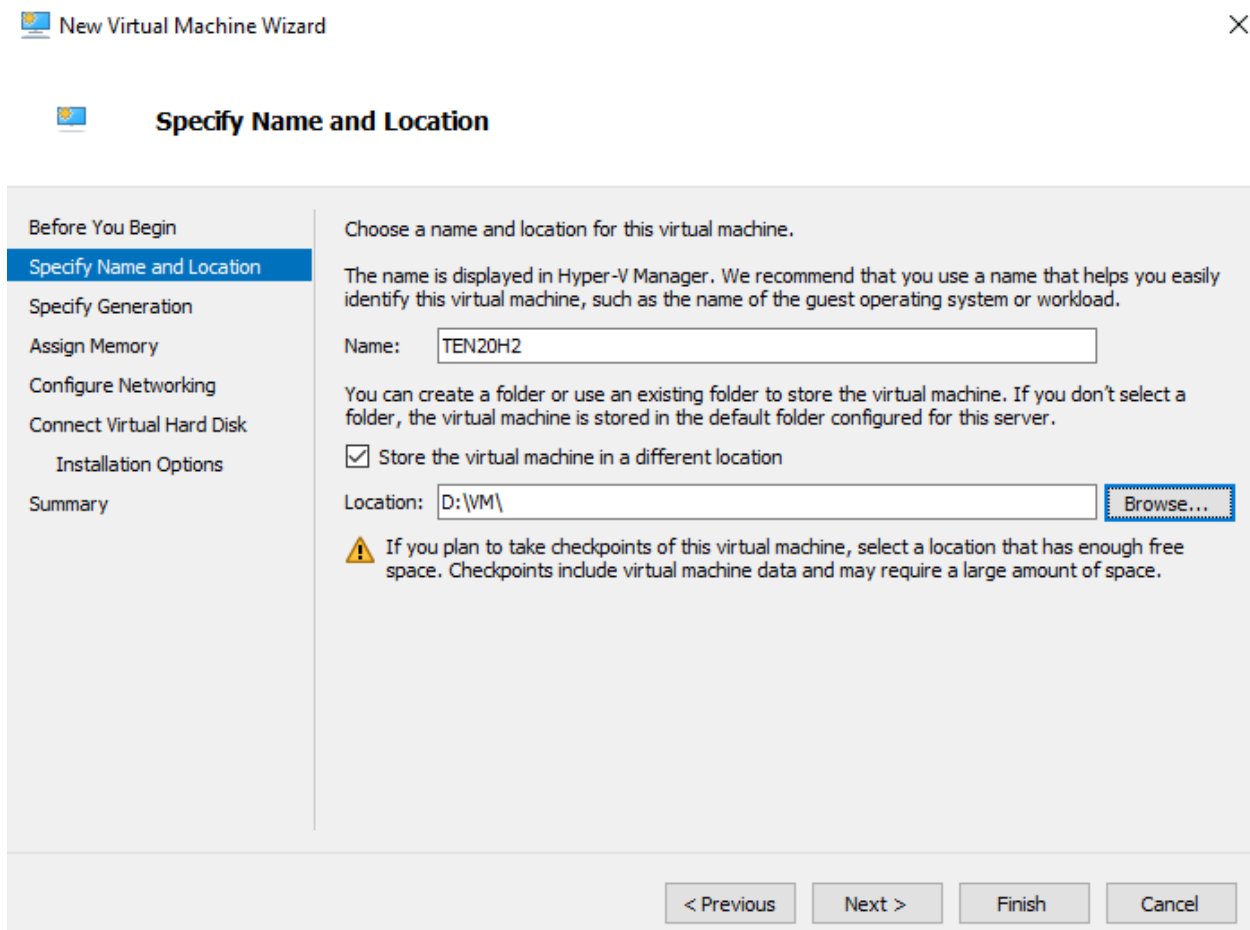
Next >

Summary

Cancel



Time to create a test VM.






Specify Generation

Before You Begin
Specify Name and Location
Specify Generation
Assign Memory
Configure Networking
Connect Virtual Hard Disk
Installation Options
Summary


Choose the generation of this virtual machine.

☒ Generation 1

This virtual machine generation supports 32-bit and 64-bit guest operating systems and provides virtual hardware which has been available in all previous versions of Hyper-V.

 ☐ Generation 2

This virtual machine generation provides support for newer virtualization features, has UEFI-based firmware, and requires a supported 64-bit guest operating system.

 Once a virtual machine has been created, you cannot change its generation.

[More about virtual machine generation support](#)

< Previous

Next >

Finish

Cancel




Assign Memory

Before You Begin
Specify Name and Location
Specify Generation
Assign Memory
Configure Networking
Connect Virtual Hard Disk
Installation Options
Summary

Specify the amount of memory to allocate to this virtual machine. You can specify an amount from 32 MB through 12582912 MB. To improve performance, specify more than the minimum amount recommended for the operating system.

Startup memory: MB

☐ Use Dynamic Memory for this virtual machine.

 When you decide how much memory to assign to a virtual machine, consider how you intend to use the virtual machine and the operating system that it will run.

< Previous

Next >

Finish

Cancel

New Virtual Machine Wizard

×

Configure Networking

Before You Begin

Specify Name and Location

Specify Generation

Assign Memory

Configure Networking

Connect Virtual Hard Disk

Installation Options

Summary

Each new virtual machine includes a network adapter. You can configure the network adapter to use a virtual switch, or it can remain disconnected.

Connection:

Realtek PCIe GBE Family Controller - Virtual Switch

< Previous

Next >

Finish

Cancel

New Virtual Machine Wizard

×

Connect Virtual Hard Disk

Before You Begin

Specify Name and Location

Specify Generation

Assign Memory

Configure Networking

Connect Virtual Hard Disk

Installation Options

Summary

A virtual machine requires storage so that you can install an operating system. You can specify the storage now or configure it later by modifying the virtual machine's properties.

☒ Create a virtual hard disk

Use this option to create a VHDX dynamically expanding virtual hard disk.

Name:

TEN20H2.vhdx

Location:

D:\VM\TEN20H2\Virtual Hard Disks\

Browse...

Size:

127

 GB (Maximum: 64 TB)

☐ Use an existing virtual hard disk

Use this option to attach an existing virtual hard disk, either VHD or VHDX format.

Location:

C:\VM\

Browse...

☐ Attach a virtual hard disk later

Use this option to skip this step now and attach an existing virtual hard disk later.

< Previous

Next >

Finish

Cancel



Installation Options

Before You Begin
Specify Name and Location
Specify Generation
Assign Memory
Configure Networking
Connect Virtual Hard Disk
Installation Options
Summary

You can install an operating system now if you have access to the setup media, or you can install it later.

☒ Install an operating system later

☐ Install an operating system from a bootable CD/DVD-ROM

Media

☒ Physical CD/DVD drive: E:

☐ Image file (.iso): F:\Trekstor Backup Jul 2017\Softwares\Operating

☐ Install an operating system from a bootable floppy disk

Media

Virtual floppy disk (.vfd):

☐ Install an operating system from a network-based installation server

< Previous

Next >

Finish

Cancel



Completing the New Virtual Machine Wizard

Before You Begin
Specify Name and Location
Specify Generation
Assign Memory
Configure Networking
Connect Virtual Hard Disk
Installation Options
Summary

You have successfully completed the New Virtual Machine Wizard. You are about to create the following virtual machine.

Description:

Name: TEN20H2
Generation: Generation 1
Memory: 3048 MB
Network: Realtek PCIe GBE Family Controller - Virtual Switch
Hard Disk: D:\VM\TEN20H2\Virtual Hard Disks\TEN20H2.vhdx (VHDX, dynamically expanding)
Operating System: Will be installed at a later time

To create the virtual machine and close the wizard, click Finish.

< Previous

Next >

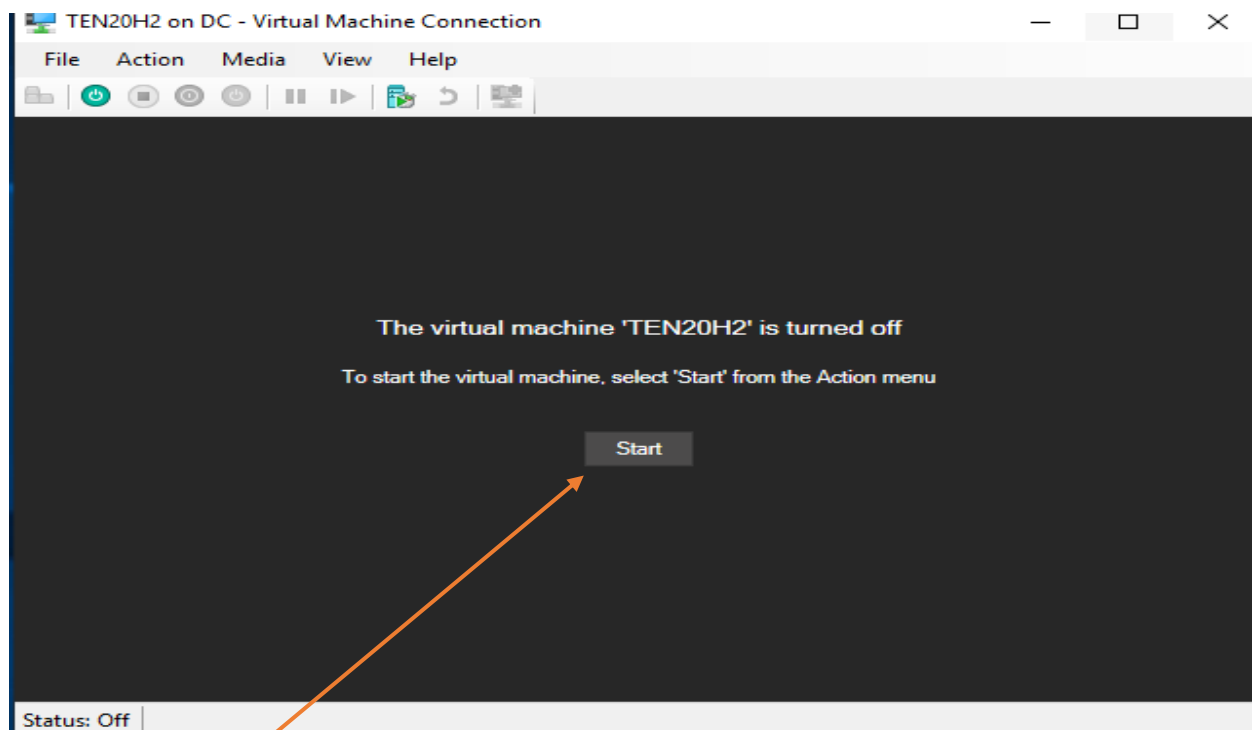
Finish

Cancel

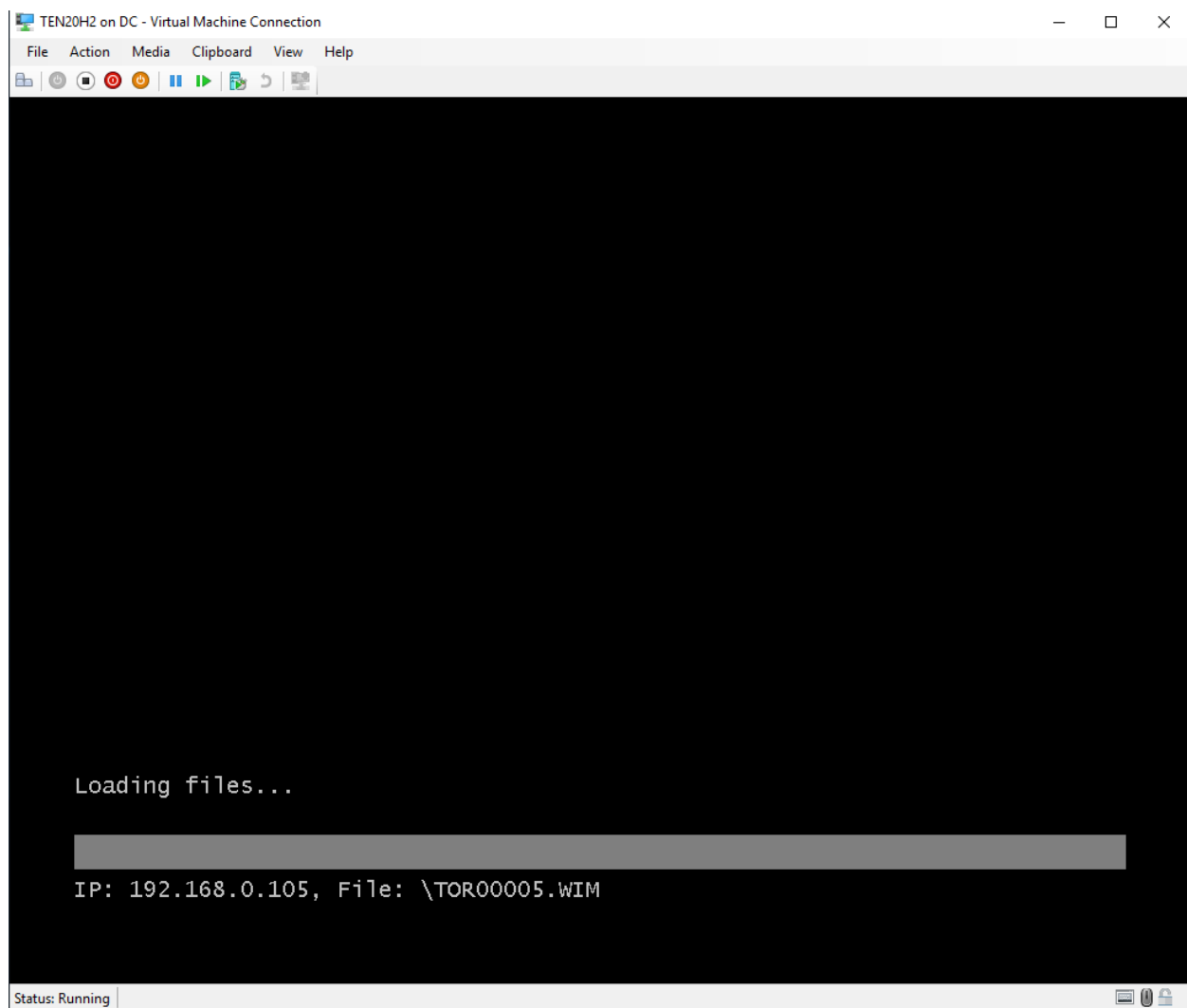


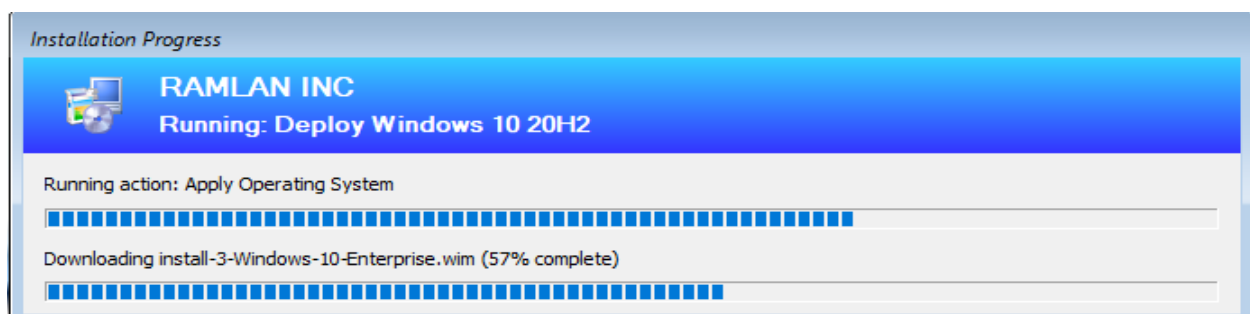
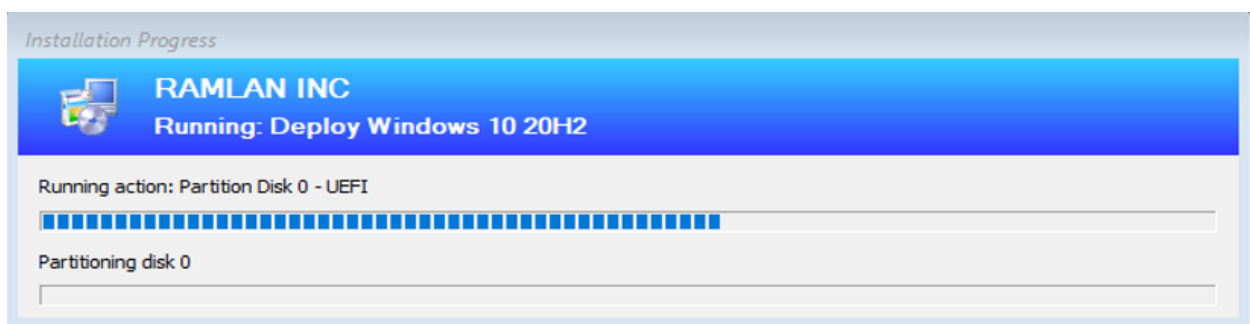
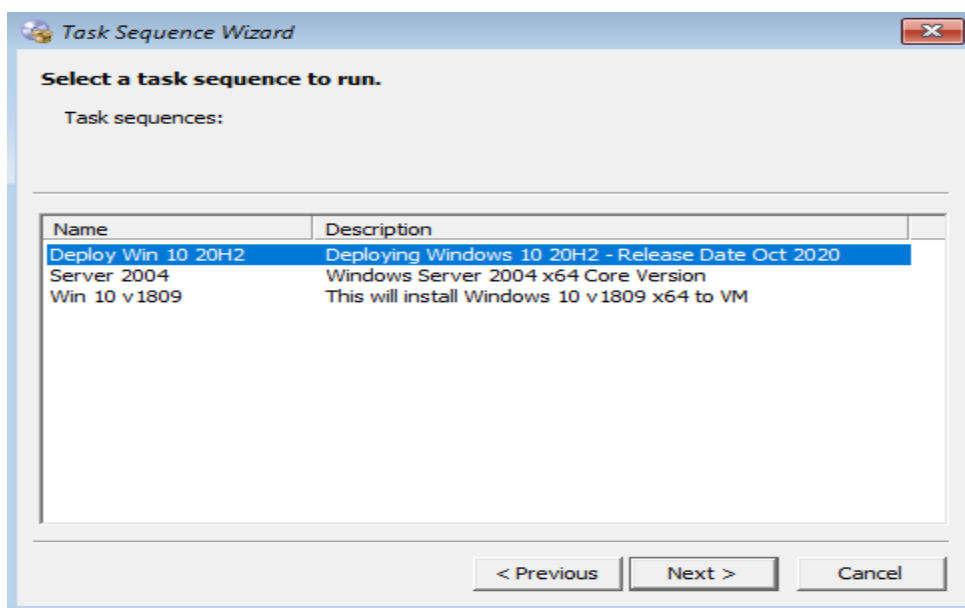
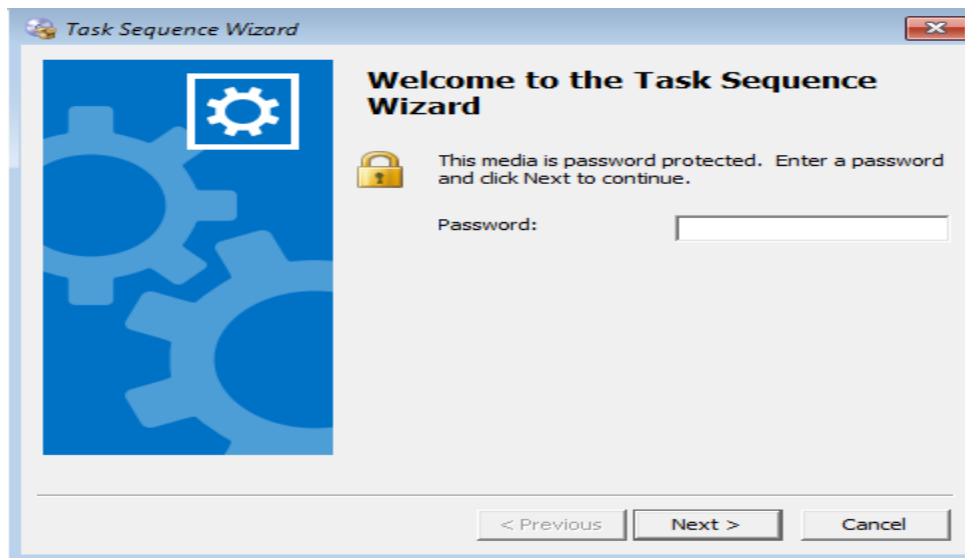
Virtual Machines

| Name | State | CPU Usage | Assigned Memory | Uptime | Status | Configurati... |
|--------------|---------|-----------|-----------------|------------|--------|----------------|
| DPM | Off | | | | | 9.0 |
| OFFICESERVER | Off | | | | | 9.0 |
| OM | Off | | | | | 9.0 |
| ORCH | Off | | | | | 9.0 |
| RRAS | Running | 5% | 3048 MB | 7.11:21:31 | | 9.0 |
| SFB | Off | | | | | 9.0 |
| SM1 | Off | | | | | 9.0 |
| SM2 | Off | | | | | 9.0 |
| SP2019 | Off | | | | | 9.0 |
| TEN20H2 | Off | | | | | 9.0 |
| TORADFS | Running | 0% | 2048 MB | 1.23:22:20 | | 9.0 |
| TP1 | Off | | | | | 9.0 |
| VMM | Off | | | | | 9.0 |



Start the virtual machine. It should PXE boot and load WINPE file automatically.





Installation Progress



RAMLAN INC

Running: Deploy Windows 10 20H2

Running action: Apply Operating System



Installation Progress



RAMLAN INC

Running: Deploy Windows 10 20H2

Running action: Apply Operating System



Applying image 1 from install-3-Windows-10-Enterprise.wim



Installation Progress



RAMLAN INC

Running: Deploy Windows 10 20H2

Running action: Apply Device Drivers



Contacting server to find compatible device drivers



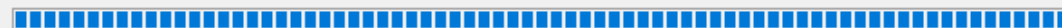
Installation Progress



RAMLAN INC

Running: Deploy Windows 10 20H2

Running action: Setup Windows and Configuration Manager



System Restart



RAMLAN INC

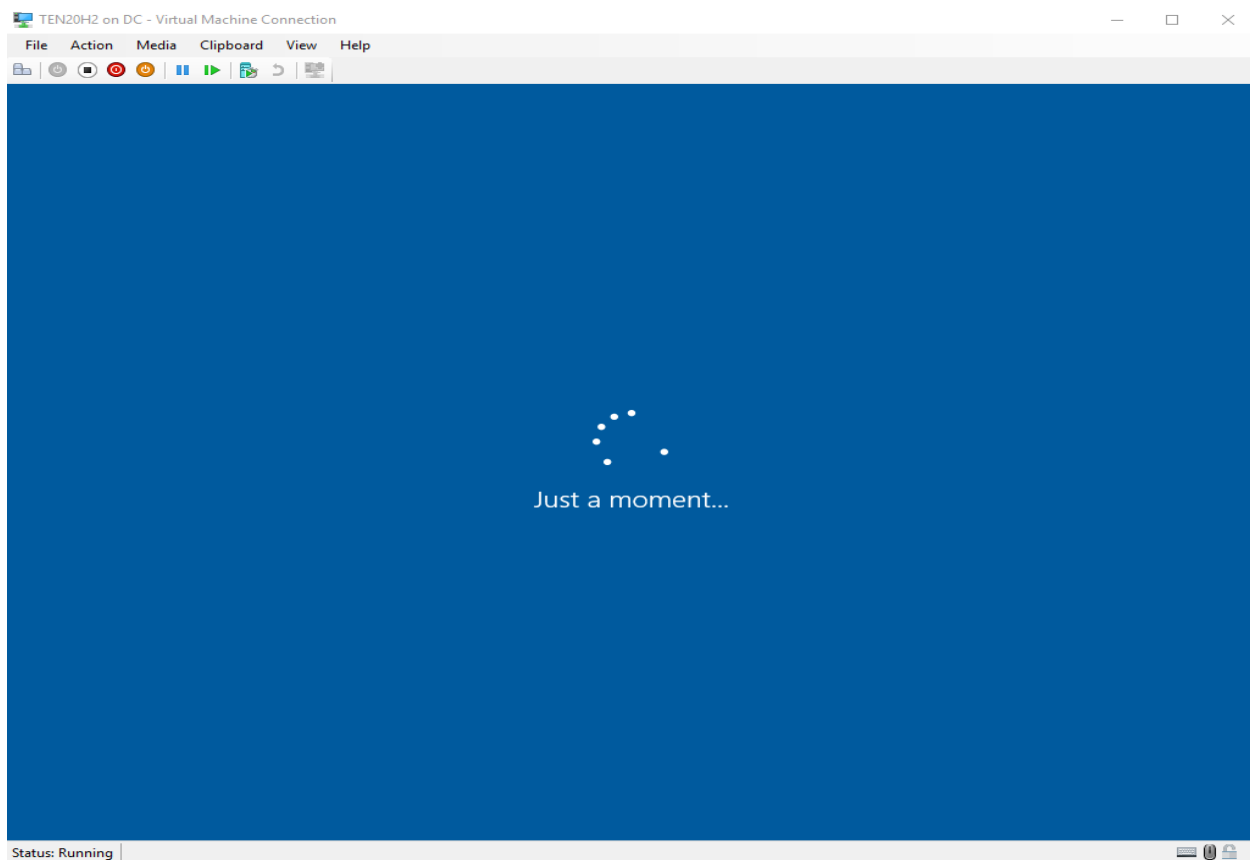
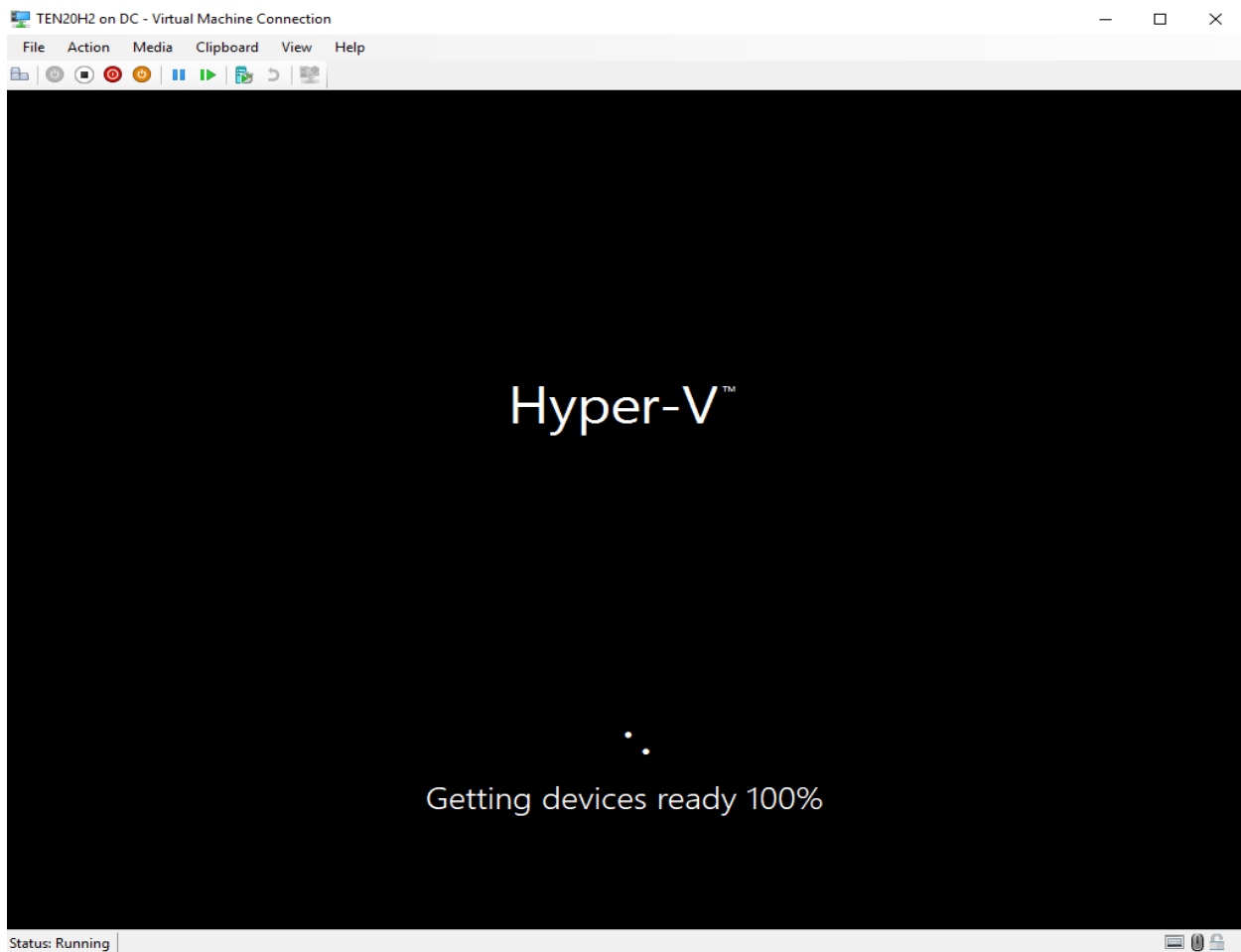
Running: Deploy Windows 10 20H2

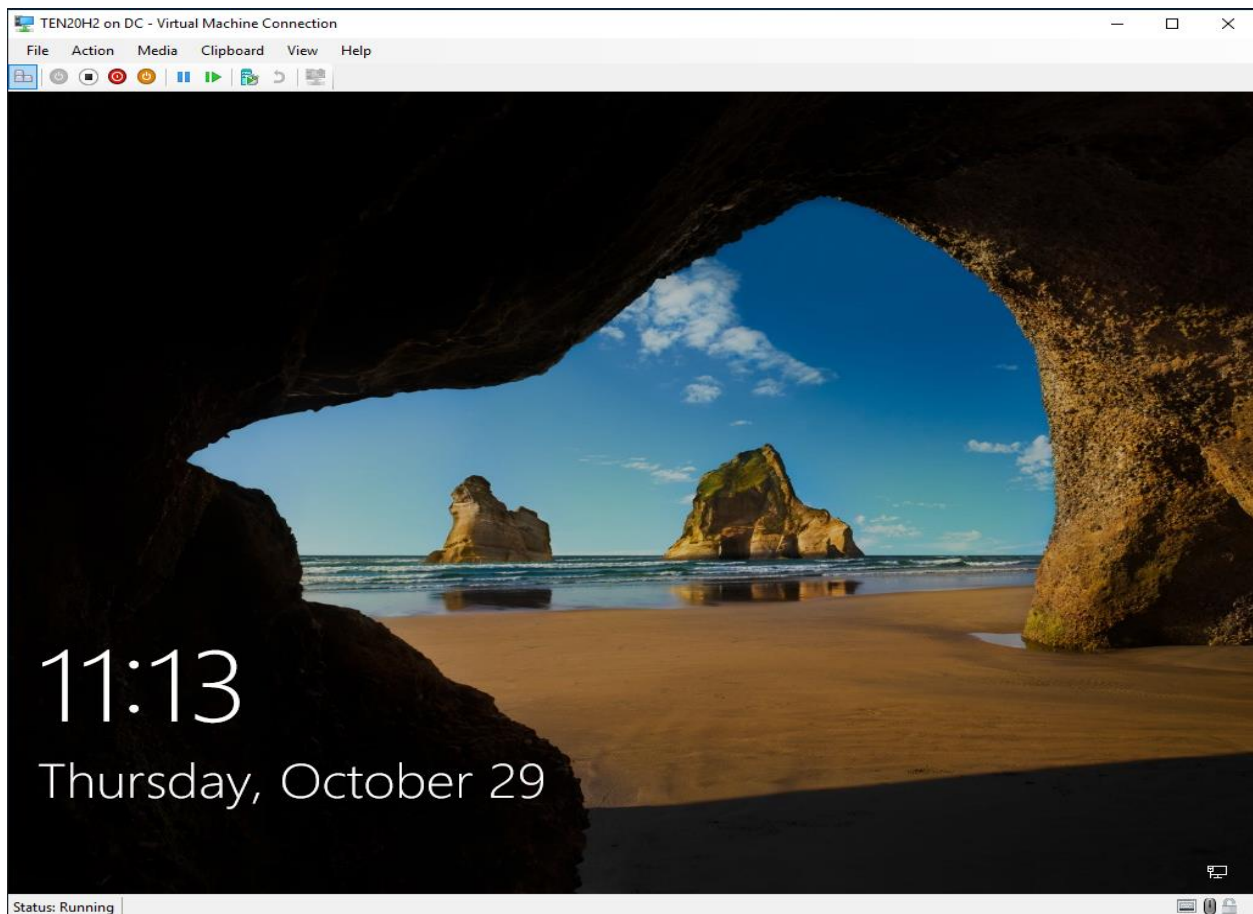
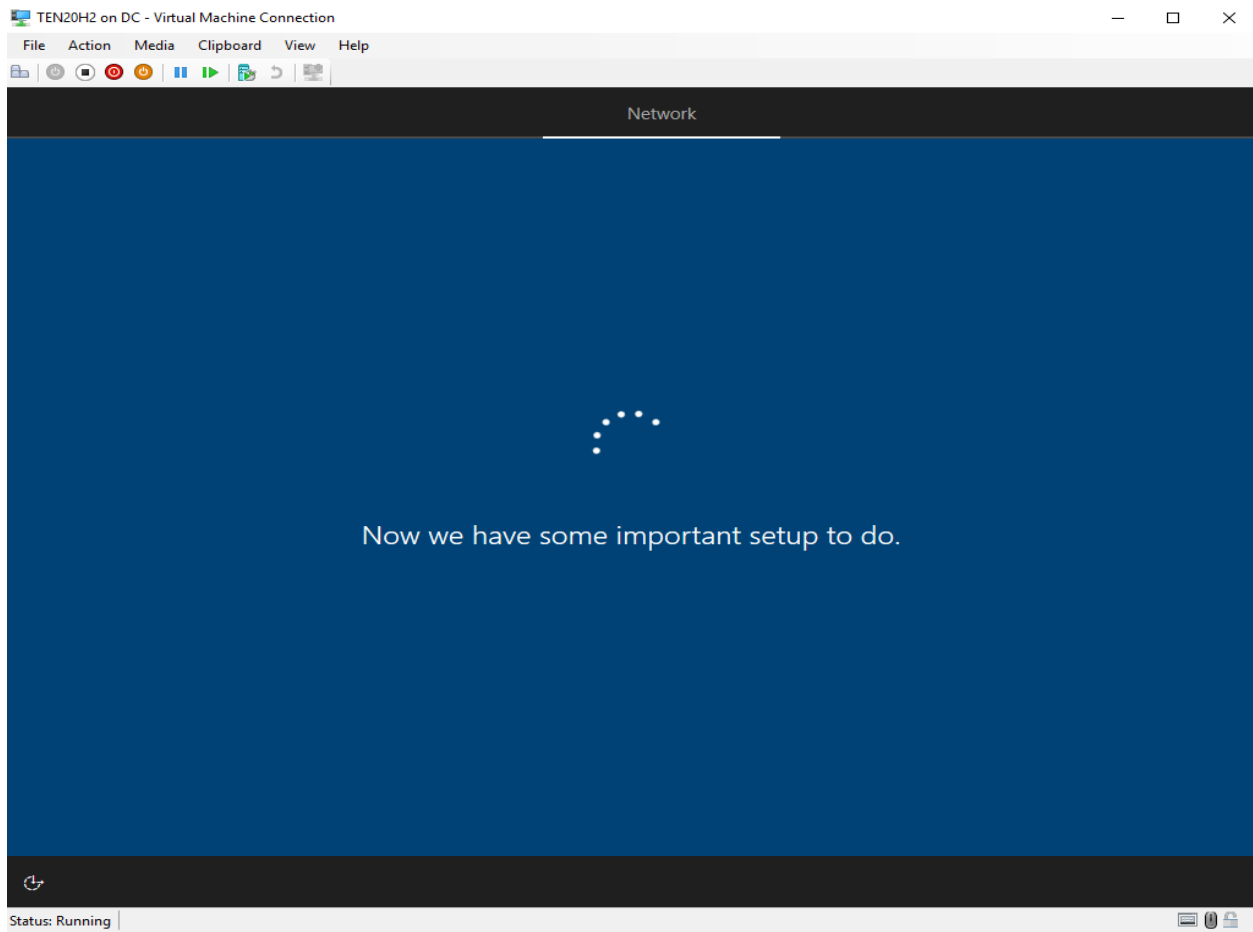
Initializing system shutdown . . .



The computer will automatically restart in 00:00:24.

Restart Now







About

Your PC is monitored and protected.

[See details in Windows Security](#)

Device specifications

| | |
|------------------|---|
| Device name | MININT-OU4O87Q |
| Full device name | MININT-OU4O87Q.RAMLAN.CA |
| Processor | Intel(R) Core(TM) i7-2630QM CPU @ 2.00GHz 2.00 GHz |
| Installed RAM | 2.98 GB |
| Device ID | D1E1061A-AE3E-4821-A743-89CD6BC4D5D9 |
| Product ID | 00329-00000-00003-AA732 |
| System type | 64-bit operating system, x64-based processor |
| Pen and touch | No pen or touch input is available for this display |

This concludes Windows 10 v20H2 deployment.

Thanks

Ram Lan

29th Oct 2020

These are the logs you can check during task sequence deployment.

Log Files:

| Phase | Log Location [Client Side] |
|---|--|
| WinPE (Before HDD are formatted and partitioned) | x:\windows\temp\smstslog\smsts.log |
| WinPE (After HDD are formatted) | x:\smstslog\smsts.log copied to c:_SMSTaskSequence\Logs\Smstslog\smsts.log |
| Installed Operating System (Before SCCM client installed) | c:_SMSTaskSequence\Logs\Smstslog\smsts.log |
| Installed Operating System (After the SCCM client is installed) | c:\windows\ccm\logs\Smstslog\smsts.log |
| Installed Operating System (When the Task Sequence is completed) | c:\windows\ccm\logs\smsts.log |