

# AZURE ADMINISTRATOR EXAM 104 Q&A

## QUESTION 1:

You have an Azure subscription that contains the following users in an Azure Active Directory tenant named contoso.onmicrosoft.com:

Name	Role	Scope
User1	Global administrator	Azure Active Directory
User2	Global administrator	Azure Active Directory
User3	User administrator	Azure Active Directory
User4	Owner	Azure Subscription

User1 creates a new Azure Active Directory tenant named external.contoso.onmicrosoft.com.

You need to create new user accounts in external.contoso.onmicrosoft.com.

Solution: You instruct User2 to create the user accounts.

Does that meet the goal?

A. Yes

B. No

The Answer is **NO**.

## QUESTION 2:

You have an Azure subscription that contains the following users in an Azure Active Directory tenant named contoso.onmicrosoft.com:

Name	Role	Scope
User1	Global administrator	Azure Active Directory
User2	Global administrator	Azure Active Directory
User3	User administrator	Azure Active Directory
User4	Owner	Azure Subscription

User1 creates a new Azure Active Directory tenant named external.contoso.onmicrosoft.com.

You need to create new user accounts in external.contoso.onmicrosoft.com.

Solution: You instruct User4 to create the user accounts.

Does that meet the goal?

A. Yes

B. No

The Answer is **NO**

## QUESTION 3:

You have an Azure subscription that contains the following users in an Azure Active Directory tenant named contoso.onmicrosoft.com:

Name	Role	Scope
User1	Global administrator	Azure Active Directory
User2	Global administrator	Azure Active Directory
User3	User administrator	Azure Active Directory
User4	Owner	Azure Subscription

User1 creates a new Azure Active Directory tenant named external.contoso.onmicrosoft.com.

You need to create new user accounts in external.contoso.onmicrosoft.com.

Solution: You instruct User3 to create the user accounts.

Does that meet the goal?

A. Yes

B. No

The Answer is **NO**

#### QUESTION 4:

##### HOTSPOT -

You have an Azure subscription named Subscription1 that contains a resource group named RG1.

In RG1, you create an internal load balancer named LB1 and a public load balancer named LB2.

You need to ensure that an administrator named Admin1 can manage LB1 and LB2. The solution must follow the principle of least privilege.

Which role should you assign to Admin1 for each task? To answer, select the appropriate options in the answer area.

NOTE: Each correct selection is worth one point.

Hot Area:

**Answer Area**

To add a backend pool to LB1:

Contributor on LB1  
Network Contributor on LB1  
Network Contributor on RG1  
Owner on LB1

To add a health probe to LB2:

Contributor on LB2  
Network Contributor on LB2  
Network Contributor on RG1  
Owner on LB2

The Answer **Network Contributor on LB1 and Network Contributor on LB2**

#### QUESTION 5:

You have an Azure subscription that contains an Azure Active Directory (Azure AD) tenant named contoso.com and an Azure Kubernetes Service (AKS) cluster named AKS1.

An administrator reports that she is unable to grant access to AKS1 to the users in contoso.com.

You need to ensure that access to AKS1 can be granted to the contoso.com users.

What should you do first?

- A. From contoso.com, modify the Organization relationships settings.
- B. From contoso.com, create an OAuth 2.0 authorization endpoint.
- C. Recreate AKS1.
- D. From AKS1, create a namespace.

The Answer is **B**

#### QUESTION 6:

You have a Microsoft 365 tenant and an Azure Active Directory (Azure AD) tenant named contoso.com.

You plan to grant three users named User1, User2, and User3 access to a temporary Microsoft SharePoint document library named Library1.

You need to create groups for the users. The solution must ensure that the groups are deleted automatically after 180 days.

Which two groups should you create? Each correct answer presents a complete solution.

NOTE: Each correct selection is worth one point.

- A. an Office 365 group that uses the Assigned membership type
- B. a Security group that uses the Assigned membership type
- C. an Office 365 group that uses the Dynamic User membership type
- D. a Security group that uses the Dynamic User membership type
- E. a Security group that uses the Dynamic Device membership type

The Answer is **A & C**

## QUESTION 7:

### HOTSPOT -

You have an Azure Active Directory (Azure AD) tenant named contoso.com that contains the users shown in the following table:

Name	Type	Member of
User1	Member	Group1
User2	Guest	Group1
User3	Member	None
UserA	Member	Group2
UserB	Guest	Group2

User3 is the owner of Group1.

Group2 is a member of Group1.

You configure an access review named Review1 as shown in the following exhibit:

**Create an access review**

Access reviews enable reviewers to attest user's membership in a group or access to an application.

\* Review name: **Review1**

Description:

\* Start date: **2018-11-22**

Frequency: **One time**

Duration (in days): **1**

End: **Never** **End by Occurrences**

\* Number of times: **0**

\* End date: **2018-12-22**

**Users**

Users to review: **Members of a group**

Scope: ☒ **Guest users only** ☐ **Everyone**

\* **Group**  
**Group1**

**Reviewers**

Reviewers: **Group owners**

**Programs**

Link to program: **Default program**

**Upon completion settings**

**Advanced settings**

For each of the following statements, select Yes if the statement is true. Otherwise, select No.

NOTE: Each correct selection is worth one point.

Hot Area:

### Answer Area

Statements	Yes	No
User3 can perform an access review of User1	<input type="radio"/>	<input type="radio"/>
User3 can perform an access review of UserA	<input type="radio"/>	<input type="radio"/>
User3 can perform an access review of UserB	<input type="radio"/>	<input type="radio"/>

The Answer is **No No Yes**

## QUESTION 8:

### HOTSPOT -

You have the Azure management groups shown in the following table:

Name	In management group
Tenant Root Group	<i>Not applicable</i>
ManagementGroup11	Tenant Root Group
ManagementGroup12	Tenant Root Group
ManagementGroup21	ManagementGroup11

You add Azure subscriptions to the management groups as shown in the following table:

Name	Management group
Subscription1	ManagementGroup21
Subscription2	ManagementGroup12

You create the Azure policies shown in the following table:

Name	Parameter	Scope
Not allowed resource types	virtualNetworks	Tenant Root Group
Allowed resource types	virtualNetworks	ManagementGroup12

For each of the following statements, select Yes if the statement is true. Otherwise, select No.

NOTE: Each correct selection is worth one point.

Hot Area:

### Answer Area

Statements	Yes	No
You can create a virtual network in Subscription1.	<input type="radio"/>	<input type="radio"/>
You can create a virtual machine in Subscription2.	<input type="radio"/>	<input type="radio"/>
You can add Subscription1 to ManagementGroup11.	<input type="radio"/>	<input type="radio"/>

The Answer is **No No Yes**

## QUESTION 9:

You have an Azure policy as shown in the following exhibit:

**SCOPE**

\* Scope ([Learn more about setting the scope](#))

Subscription 1

**Exclusions**

Subscription 1/ContosoRG1

**BASICS**

\* Policy definition

Not allowed resource types

\* Assignment name

Not allowed resource types

Assignment ID

/subscriptions/5eb8d0b6-ce3b-4ce0-a631-9f5321bedabb/providers/Microsoft.Authorization/policyAssignments/0e0fb886bf854f54acc2a9

Description

Assigned by

admin1@contoso.com

**PARAMETERS**

\* Not allowed resource types

Microsoft.Sql/servers

What is the effect of the policy?

- A. You are prevented from creating Azure SQL servers anywhere in Subscription 1.
- B. You can create Azure SQL servers in ContosoRG1 only.
- C. You are prevented from creating Azure SQL Servers in ContosoRG1 only.
- D. You can create Azure SQL servers in any resource group within Subscription 1.

The Answer is **B**



## QUESTION 10:

### HOTSPOT -

You have an Azure subscription that contains the resources shown in the following table:

Name	Type	Resource group	Tag
RG6	Resource group	<i>Not applicable</i>	<i>None</i>
VNET1	Virtual network	RG6	Department: D1

You assign a policy to RG6 as shown in the following table:

Section	Setting	Value
Scope	Scope	Subscription1/RG6
	Exclusions	<i>None</i>
Basics	Policy definition	Apply tag and its default value
	Assignment name	Apply tag and its default value
Parameters	Tag name	Label
	Tag value	Value1

To RG6, you apply the tag: RGroup: RG6.

You deploy a virtual network named VNET2 to RG6.

Which tags apply to VNET1 and VNET2? To answer, select the appropriate options in the answer area.

NOTE: Each correct selection is worth one point.

Hot Area:

### Answer Area

VNET1:

None  
Department: D1 only  
Department: D1, and RGroup: RG6 only  
Department: D1, and Label: Value1 only  
Department: D1, RGroup: RG6, and Label: Value1

VNET2:

None  
RGroup: RG6 only  
Label: Value1 only  
RGroup: RG6, and Label: Value1

The Answer is **Department D1 only and Label Value 1 only**

## QUESTION 11:

You have an Azure subscription named AZPT1 that contains the resources shown in the following table:

Name	Type
storage1	Azure Storage account
VNET1	Virtual network
VM1	Azure virtual machine
VM1Managed	Managed disk for VM1
RVAULT1	Recovery Services vault for the site recovery of VM1

You create a new Azure subscription named AZPT2.

You need to identify which resources can be moved to AZPT2.

Which resources should you identify?

- A. VM1, storage1, VNET1, and VM1Managed only
- B. VM1 and VM1Managed only
- C. VM1, storage1, VNET1, VM1Managed, and RVAULT1
- D. RVAULT1 only

The Answer is **C**

#### QUESTION 12:

You recently created a new Azure subscription that contains a user named Admin1.

Admin1 attempts to deploy an Azure Marketplace resource by using an Azure Resource Manager template. Admin1 deploys the template by using Azure PowerShell and receives the following error message: "User failed validation to purchase resources. Error message: "Legal terms have not been accepted for this item on this subscription. To accept legal terms, please go to the Azure portal (<http://go.microsoft.com/fwlink/?LinkId=534873>) and configure programmatic deployment for the Marketplace item or create it there for the first time."

You need to ensure that Admin1 can deploy the Marketplace resource successfully.

What should you do?

- A. From Azure PowerShell, run the Set-AzApiManagementSubscription cmdlet
- B. From the Azure portal, register the Microsoft.Marketplace resource provider
- C. From Azure PowerShell, run the Set-AzMarketplaceTerms cmdlet
- D. From the Azure portal, assign the Billing administrator role to Admin1

The Answer is **C**

#### QUESTION 13:

You have an Azure Active Directory (Azure AD) tenant that contains 5,000 user accounts.

You create a new user account named AdminUser1.

You need to assign the User administrator administrative role to AdminUser1.

What should you do from the user account properties?

- A. From the Licenses blade, assign a new license
- B. From the Directory role blade, modify the directory role
- C. From the Groups blade, invite the user account to a new group

The Answer is **B**

#### QUESTION 14:

You have an Azure Active Directory (Azure AD) tenant named contoso.onmicrosoft.com that contains 100 user accounts.

You purchase 10 Azure AD Premium P2 licenses for the tenant.

You need to ensure that 10 users can use all the Azure AD Premium features.

What should you do?

- A. From the Licenses blade of Azure AD, assign a license
- B. From the Groups blade of each user, invite the users to a group
- C. From the Azure AD domain, add an enterprise application
- D. From the Directory role blade of each user, modify the directory role

The Answer is **A**

### QUESTION 15:

You have an Azure subscription named Subscription1 and an on-premises deployment of Microsoft System Center Service Manager. Subscription1 contains a virtual machine named VM1. You need to ensure that an alert is set in Service Manager when the amount of available memory on VM1 is below 10 percent. What should you do first?

- A. Create an automation runbook
- B. Deploy a function app
- C. Deploy the IT Service Management Connector (ITSM)
- D. Create a notification

The Answer is C

### QUESTION 16:

You sign up for Azure Active Directory (Azure AD) Premium. You need to add a user named admin1@contoso.com as an administrator on all the computers that will be joined to the Azure AD domain. What should you configure in Azure AD?

- A. Device settings from the Devices blade
- B. Providers from the MFA Server blade
- C. User settings from the Users blade
- D. General settings from the Groups blade

The Answer is A

### QUESTION 17:

HOTSPOT -

You have Azure Active Directory tenant named Contoso.com that includes following users:

Name	Role
User1	Cloud device administrator
User2	User administrator

Contoso.com includes following Windows 10 devices:

Name	Join type
Device1	Azure AD registered
Device2	Azure AD joined

You create following security groups in Contoso.com:

Name	Membership Type	Owner
Group1	Assigned	User2
Group2	Dynamic Device	User2

For each of the following statements, select Yes if the statement is true. Otherwise, select No.

NOTE: Each correct selection is worth one point.

Hot Area:

#### Answer Area

##### Statements

Yes

No

User1 can add Device2 to Group1

☐☐

User2 can add Device1 to Group1

☐☐

User2 can add Device2 to Group2

☐☐

The Answer is Yes No Yes

### QUESTION 18:

You have an Azure subscription that contains a resource group named RG26.

RG26 is set to the West Europe location and is used to create temporary resources for a project. RG26 contains the resources shown in the following table.

Name	Type	Location
VM1	Virtual machine	North Europe
RGV1	Recovery Services vault	North Europe
SQLD01	Azure SQL database	North Europe
AZSQL01	Azure SQL database server	North Europe
sa001	Storage account	West Europe

SQLDB01 is backed up to RGV1.

When the project is complete, you attempt to delete RG26 from the Azure portal. The deletion fails.

You need to delete RG26.

What should you do first?

- A. Delete VM1
- B. Stop VM1
- C. Stop the backup of SQLDB01
- D. Delete sa001

The Answer is C

### QUESTION 19:

You have an Azure subscription named Subscription1 that contains a virtual network named VNet1. VNet1 is in a resource group named RG1.

Subscription1 has a user named User1. User1 has the following roles:

- ☒ Reader
- ☒ Security Admin

Security Reader -



You need to ensure that User1 can assign the Reader role for VNet1 to other users.

What should you do?

- A. Remove User 1 from the Security Reader role for Subscription1. Assign User1 the Contributor role for RG1.
- B. Assign User1 the Owner role for VNet1.
- C. Remove User1 from the Security Reader and Reader roles for Subscription1.
- D. Assign User1 the Network Contributor role for RG1.

The Answer is B

### QUESTION 20:

You have an Azure Active Directory (Azure AD) tenant named contosocloud.onmicrosoft.com.

Your company has a public DNS zone for contoso.com.

You add contoso.com as a custom domain name to Azure AD.

You need to ensure that Azure can verify the domain name.

Which type of DNS record should you create?

- A. MX
- B. NSEC
- C. SRV
- D. NSEC3

The Answer is A



### QUESTION 21:

#### DRAG DROP -

You have an on-premises file server named Server1 that runs Windows Server 2016.

You have an Azure subscription that contains an Azure file share.

You deploy an Azure File Sync Storage Sync Service, and you create a sync group.

You need to synchronize files from Server1 to Azure.

Which three actions should you perform in sequence? To answer, move the appropriate actions from the list of actions to the answer area and arrange them in the correct order.

Select and Place:

Actions	Answer Area
Install the Azure File Sync agent on Server1	
Create an Azure on-premises data gateway	
Create a Recovery Services vault	➔
Register Server1	➔
Add a server endpoint	
Install the DFS Replication server role on Server1	

The Answer is **Install Azure File Sync Agent + Register Server 1 + Add Server Endpoint**

### QUESTION 22:

#### HOTSPOT -

You plan to create an Azure Storage account in the Azure region of East US 2.

You need to create a storage account that meets the following requirements:

☑ Replicates synchronously.

☑ Remains available if a single data center in the region fails.

How should you configure the storage account? To answer, select the appropriate options in the answer area.

NOTE: Each correct selection is worth one point.

Hot Area:

Answer Area	
Replication:	<div>▼</div> <div>Geo-redundant storage (GRS) Locally-redundant storage (LRS) Read-access geo-redundant storage (RA GRS) Zone-redundant storage (ZRS)</div>
Account type:	<div>▼</div> <div>Blob storage Storage (general purpose v1) StorageV2 (general purpose v2)</div>

The Answer is **ZRS + Storage V2**

### QUESTION 23:

You have an Azure Storage account named storage1.  
You plan to use AzCopy to copy data to storage1.  
You need to identify the storage services in storage1 to which you can copy the data.  
What should you identify?

- A. blob, file, table, and queue
- B. blob and file only
- C. file and table only
- D. file only
- E. blob, table, and queue only

The Answer is B

### QUESTION 24:

HOTSPOT -

You have an Azure Storage account named storage1 that uses Azure Blob storage and Azure File storage.

You need to use AzCopy to copy data to the blob storage and file storage in storage1.

Which authentication method should you use for each type of storage? To answer, select the appropriate options in the answer area.

NOTE: Each correct selection is worth one point.

Hot Area:

#### Answer Area

Blob storage:

- Azure Active Directory (Azure AD) only
- Shared access signatures (SAS) only
- Access keys and shared access signatures (SAS) only
- Azure Active Directory (Azure AD) and shared access signatures (SAS) only
- Azure Active Directory (Azure AD), access keys, and shared access signatures (SAS)

File storage:

- Azure Active Directory (Azure AD) only
- Shared access signatures (SAS) only
- Access keys and shared access signatures (SAS) only
- Azure Active Directory (Azure AD) and shared access signatures (SAS) only
- Azure Active Directory (Azure AD), access keys, and shared access signatures (SAS)

The Answer is AAD, SAS only

### QUESTION 25:

You have an Azure subscription that contains an Azure Storage account.

You plan to create an Azure container instance named container1 that will use a Docker image named Image1. Image1 contains a Microsoft SQL Server instance that requires persistent storage.

You need to configure a storage service for Container1.

What should you use?

- A. Azure Files
- B. Azure Blob storage
- C. Azure Queue storage
- D. Azure Table storage

The Answer is A

## QUESTION 26:

You have an app named App1 that runs on two Azure virtual machines named VM1 and VM2.

You plan to implement an Azure Availability Set for App1. The solution must ensure that App1 is available during planned maintenance of the hardware hosting VM1 and VM2.

What should you include in the Availability Set?

- A. one update domain
- B. two fault domains
- C. one fault domain
- D. two update domains

The Answer is **D**

## QUESTION 27:

HOTSPOT -

You have an Azure subscription named Subscription1 that contains the resources shown in the following table:

Name	Type	Location	Resource group
RG1	Resource group	East US	<i>Not applicable</i>
RG2	Resource group	West US	<i>Not applicable</i>
Vault1	Recovery Services vault	West Europe	RG1
storage1	Storage account	East US	RG2
storage2	Storage account	West US	RG1
storage3	Storage account	West Europe	RG2
Analytics1	Log Analytics workspace	East US	RG1
Analytics2	Log Analytics workspace	West US	RG2
Analytics3	Log Analytics workspace	West Europe	RG1

You plan to configure Azure Backup reports for Vault1.

You are configuring the Diagnostics settings for the AzureBackupReports log.

Which storage accounts and which Log Analytics workspaces can you use for the Azure Backup reports of Vault1? To answer, select the appropriate options in the answer area.

NOTE: Each correct selection is worth one point.

Hot Area:

### Answer Area

Storage accounts:

▼

storage1 only

storage2 only

storage3 only

storage1, storage2, and storage3

Log Analytics workspaces:

▼

Analytics1 only

Analytics2 only

Analytics3 only

Analytics1, Analytics2, and Analytics3

The Answer is **Storage 3 and Analytics 1,2 & 3**

## QUESTION 28:

### HOTSPOT -

You have an Azure subscription named Subscription1.

In Subscription1, you create an Azure file share named share1.

You create a shared access signature (SAS) named SAS1 as shown in the following exhibit:

Allowed services ⓘ

☐ Blob ☒ File ☐ Queue ☐ Table

Allowed resource types ⓘ

☒ Service ☒ Container ☒ Object

Allowed permissions ⓘ

☒ Read ☒ Write ☐ Delete ☒ List ☐ Add ☐ Create ☐ Update ☐ Process

Start and expiry date/time ⓘ

Start

2018-09-01 2:00:00 PM

End

2018-09-14 2:00:00 PM

(UTC+02:00) --- Current Timezone ---

Allowed IP addresses ⓘ

193.77.134.10-193.77.134.50

Allowed protocols ⓘ

☒ HTTPS only ☐ HTTPS and HTTP

Signing key ⓘ

key1

**Generate SAS and connection string**

To answer, select the appropriate options in the answer area.

NOTE: Each correct selection is worth one point.

Hot Area:

### Answer Area

If on September 2, 2018, you run Microsoft Azure Storage Explorer on a computer that has an IP address of 193.77.134.1, and you use SAS1 to connect to the storage account, you [answer choice].

will be prompted for credentials  
will have no access  
will have read, write, and list access  
will have read-only access

If on September 10, 2018, you run the net use command on a computer that has an IP address of 193.77.134.50, and you use SAS1 as the password to connect to share1, you [answer choice].

will be prompted for credentials  
will have no access  
will have read, write, and list access  
will have read-only access

The Answer is **No Access and Read Write and List Access**



### QUESTION 29:

You have an on-premises server that contains a folder named D:\Folder1.  
You need to copy the contents of D:\Folder1 to the public container in an Azure Storage account named contosodata.  
Which command should you run?

- A. `https://contosodata.blob.core.windows.net/public`
- B. `azcopy sync D:\folder1 https://contosodata.blob.core.windows.net/public --snapshot`
- C. `azcopy copy D:\folder1 https://contosodata.blob.core.windows.net/public --recursive`
- D. `az storage blob copy start-batch D:\Folder1 https://contosodata.blob.core.windows.net/public`

The Answer is C

### QUESTION 30:

You have an Azure subscription named Subscription1 that contains the storage accounts shown in the following table:

Name	Account kind	Azure service that contains data
storage1	Storage	File
storage2	StorageV2 (general purpose v2)	File, Table
storage3	StorageV2 (general purpose v2)	Queue
storage4	BlobStorage	Blob

You plan to use the Azure Import/Export service to export data from Subscription1.

You need to identify which storage account can be used to export the data.

What should you identify?

- A. storage1
- B. storage2
- C. storage3
- D. storage4

The Answer is D

### QUESTION 31:

#### HOTSPOT -

You have Azure subscription that includes following Azure file shares:

Name	In storage account	Location
share1	storage1	West US
share2	storage1	West US

You have the following on-premises servers:

Name	Folders
Server1	D:\Folder1, E:\Folder2
Server2	D:\Data

You create a Storage Sync Service named Sync1 and an Azure File Sync group named Group1. Group1 uses share1 as a cloud endpoint. You register Server1 and Server2 in Sync1. You add D:\Folder1 on Server1 as a server endpoint of Group1.

For each of the following statements, select Yes if the statement is true. Otherwise, select No.

NOTE: Each correct selection is worth one point.

Hot Area:

#### Answer Area

##### Statements

Yes

No

share2 can be added as a cloud endpoint for Group1

☐☐

E:\Folder2 on Server1 can be added as a server endpoint for Group1

☐☐

D:\Data on Server2 can be added as a server endpoint for Group1

☐☐

The Answer is No No Yes

### QUESTION 32:

#### DRAG DROP -

You have an Azure subscription named Subscription1.

You create an Azure Storage account named contosostorage, and then you create a file share named data.

Which UNC path should you include in a script that references files from the data file share? To answer, drag the appropriate values to the correct targets. Each value may be used once, more than once or not at all. You may need to drag the split bar between panes or scroll to view content.

NOTE: Each correct selection is worth one point.

Select and Place:

Values		Answer Area
blob	blob.core.windows.net	\\ <input type="text"/> . <input type="text"/> \ <input type="text"/>
contosostorage	data	
file	file.core.windows.net	
portal.azure.com	subscription1	

The Answer is

\\  .  \

### QUESTION 33:

#### HOTSPOT -

You have an Azure subscription that contains an Azure Storage account.

You plan to copy an on-premises virtual machine image to a container named vmimages.

You need to create the container for the planned image.

Which command should you run? To answer, select the appropriate options in the answer area.

NOTE: Each correct selection is worth one point.

Hot Area:

**Answer Area**

azcopy  ▼

'https://mystorageaccount.  .core.windows.net/vmimages'

dfs   
 queue   
 table   
 images   
 file

The Answer is **Make -> Blob**

### QUESTION 34:

#### HOTSPOT -

You have an Azure File sync group that has the endpoints shown in the following table.

Name	Type
Endpoint1	Cloud endpoint
Endpoint2	Server endpoint
Endpoint3	Server endpoint

Cloud tiering is enabled for Endpoint3.

You add a file named File1 to Endpoint1 and a file named File2 to Endpoint2.

On which endpoints will File1 and File2 be available within 24 hours of adding the files? To answer, select the appropriate options in the answer area.

NOTE: Each correct selection is worth one point.

Hot Area:

#### Answer Area

File1:

Endpoint1 only  
Endpoint3 only  
Endpoint2 and Endpoint3 only  
Endpoint1, Endpoint2, and Endpoint3

File2:

Endpoint2 only  
Endpoint3 only  
Endpoint2 and Endpoint3 only  
Endpoint1, Endpoint2, and Endpoint3

The Answer is **Endpoint 3 and Endpoint 1, 2 & 3**

### QUESTION 35:

#### HOTSPOT -

You have several Azure virtual machines on a virtual network named VNet1.

You configure an Azure Storage account as shown in the following exhibit.

Home > Storage accounts > contoso - Firewalls and virtual networks

contoso - Firewalls and virtual networks

Storage Account

Search (Ctrl+F)

Save Discard

Allow access from

☐ All networks ☒ Selected networks

Configure network security for your storage accounts. [Learn more.](#)

Virtual networks

Secure your storage account with virtual networks. [+ Add existing virtual network](#)  
[+ Add new virtual network](#)

VIRTUAL NET...	SUBNET	ADDRESS RA...	ENDPOINT ST...	RESOURCE G...	SUBSCRIPTION
▼ VNet1	1	10.2.0.0/16		DemoRG	Production subscrip ...
	Prod	10.2.0.0/24	✓ Enabled	DemoRG	Production subscrip ...

Firewall

Add IP ranges to allow access from the Internet or your on-premises networks. [Learn more.](#)

ADDRESS RANGE

Exceptions

☐ Allow trusted Microsoft services to access this storage account

☐ Allow read access to storage logging from any network

☐ Allow read access to storage metrics from any network

Use the drop-down menus to select the answer choice that completes each statement based on the information presented in the graphic.

NOTE: Each correct selection is worth one point.

Hot Area:

## Answer Area

The virtual machines on the 10.2.9.0/24 subnet will have network connectivity to the file shares in the storage account [answer choice].

always

during a backup

never

Azure Backup will be able to back up the unmanaged hard disks of the virtual machines in the storage account [answer choice].

always

during a backup

never

The Answer is **Never Never**

### QUESTION 36:

#### HOTSPOT -

You have a sync group named Sync1 that has a cloud endpoint. The cloud endpoint includes a file named File1.txt.

Your on-premises network contains servers that run Windows Server 2016. The servers are configured as shown in the following table.

Name	Share	Share contents
Server1	Share1	File1.txt, File2.txt
Server2	Share2	File2.txt, File3.txt

You add Share1 as an endpoint for Sync1. One hour later, you add Share2 as an endpoint for Sync1.

For each of the following statements, select Yes if the statement is true. Otherwise, select No.

NOTE: Each correct selection is worth one point.

Hot Area:

## Answer Area

Statements	Yes	No
On the cloud endpoint, File1.txt is overwritten by File1.txt from Share1.	<input type="radio"/>	<input type="radio"/>
On Server1, File1.txt is overwritten by File1.txt from the cloud endpoint.	<input type="radio"/>	<input type="radio"/>
File1.txt from Share1 replicates to Share2.	<input type="radio"/>	<input type="radio"/>

The Answer is **No No Yes**

### QUESTION 37:

You have an Azure subscription that contains the storage accounts shown in the following table.

Name	Kind	Performance	Replication	Access tier
storage1	Storage (general purpose v1)	Premium	Geo-redundant storage (GRS)	None
storage2	StorageV2 (general purpose v2)	Standard	Locally-redundant storage (LRS)	Cool
storage3	StorageV2 (general purpose v2)	Premium	Read-access geo-redundant storage (RA-GRS)	Hot
storage4	BlobStorage	Standard	Locally-redundant storage (LRS)	Hot

You need to identify which storage account can be converted to zone-redundant storage (ZRS) replication by requesting a live migration from Azure support.

What should you identify?

- A. storage1
- B. storage2
- C. storage3
- D. storage4

The Answer is **B**



### QUESTION 38:

You have an Azure subscription that contains a storage account named account1.

You plan to upload the disk files of a virtual machine to account1 from your on-premises network. The on-premises network uses a public IP address space of 131.107.1.0/24.

You plan to use the disk files to provision an Azure virtual machine named VM1. VM1 will be attached to a virtual network named VNet1. VNet1 uses an IP address space of 192.168.0.0/24.

You need to configure account1 to meet the following requirements:

- ☞ Ensure that you can upload the disk files to account1.
- ☞ Ensure that you can attach the disks to VM1.
- ☞ Prevent all other access to account1.

Which two actions should you perform? Each correct answer presents part of the solution.

NOTE: Each correct selection is worth one point.

- A. From the Firewalls and virtual networks blade of account1, select Selected networks.
- B. From the Firewalls and virtual networks blade of account1, select Allow trusted Microsoft services to access this storage account.
- C. From the Firewalls and virtual networks blade of account1, add the 131.107.1.0/24 IP address range.
- D. From the Firewalls and virtual networks blade of account1, add VNet1.
- E. From the Service endpoints blade of VNet1, add a service endpoint.

The Answer is **A & C**

### QUESTION 39:

You have an Azure subscription named Subscription1. Subscription1 contains a resource group named RG1. RG1 contains resources that were deployed by using templates.

You need to view the date and time when the resources were created in RG1.

Solution: From the Subscriptions blade, you select the subscription, and then click Programmatic deployment.

Does this meet the goal?

- A. Yes
- B. No

[Reveal Solution](#) [Discussion](#) 2

The Answer is **No**

### QUESTION 40:

You have an Azure subscription named Subscription1. Subscription1 contains a resource group named RG1. RG1 contains resources that were deployed by using templates.

You need to view the date and time when the resources were created in RG1.

Solution: From the RG1 blade, you click Automation script.

Does this meet the goal?

- A. Yes
- B. No

[Reveal Solution](#) [Discussion](#) 2

The Answer is **No**

### QUESTION 41:

You have an Azure subscription named Subscription1. Subscription1 contains a resource group named RG1. RG1 contains resources that were deployed by using templates.

You need to view the date and time when the resources were created in RG1.

Solution: From the RG1 blade, you click Deployments.

Does this meet the goal?

- A. Yes
- B. No

The Answer is **Yes**

#### QUESTION 42:

You have an Azure subscription named Subscription1.  
You deploy a Linux virtual machine named VM1 to Subscription1.  
You need to monitor the metrics and the logs of VM1.  
What should you use?

- A. Azure HDInsight
- B. Linux Diagnostic Extension (LAD) 3.0
- C. the AzurePerformanceDiagnostics extension
- D. Azure Analysis Services

The Answer is B

#### QUESTION 43:

##### HOTSPOT -

You have an Azure subscription named Subscription1. Subscription1 contains a virtual machine named VM1.  
You install and configure a web server and a DNS server on VM1.  
VM1 has the effective network security rules shown in the following exhibit:

**Network Interface: vm 1900**   **Effective security rules**   **Topology**

Virtual network/subnet: VMRG-vnet/default   Public IP: 104.40.215.211   Private IP: 10.0.0.5   Accelerated networking: Disabled

**INBOUND PORT RULES**

Network security group VM1-nsg (attached to network interface: vm1900)   Add inbound port rule

Impacts 0 subnets, 1 network interfaces

PRIORITY	NAME	PORT	PROTOCOL	SOURCE	DESTINATION...	ACTION
900	Rule2	50-60	Any	Any	Any	Deny
1000	default-allow-rdp	3389	TCP	Any	Any	Allow
1010	Rule1	50-500	TCP	Any	Any	Allow
65000	AllowVnetInBound	Any	Any	VirtualNet...	VirtualNet...	Allow
65001	AllowAzureLoadBalanc...	Any	Any	AzureLoad...	Any	Allow
65500	DenyAllInBound	Any	Any	Any	Any	Deny

**OUTBOUND PORT RULES**

Network security group VM1-nsg (attached to network interface: vm1900)   Add outbound port

Impacts 0 subnets, 1 network interfaces

PRIORITY	NAME	PORT	PROTOCOL	SOURCE	DESTINATION...	ACTION
1000	Rule3	80	Any	Any	Any	Deny
65000	AllowVnetOutBound	Any	Any	VirtualNet...	VirtualNet...	Allow
65001	AllowInternetOutBou...	Any	Any	Any	Internet	Allow
65500	DenyAllOutBound	Any	Any	Any	Any	Deny

Use the drop-down menus to select the answer choice that completes each statement based on the information presented in the graphic.

NOTE: Each correct selection is worth one point.

Hot Area:

##### Answer Area

Internet users [answer choice].

- can connect to only the DNS server on VM1
- can connect to only the web server on VM1
- can connect to the web server and the DNS server on VM1
- cannot connect to the web server and the DNS server on VM1

If you delete Rule2, Internet users [answer choice].

- can connect to only the DNS server on VM1
- can connect to only the web server on VM1
- can connect to the web server and the DNS server on VM1
- cannot connect to the web server and the DNS server on VM1

The Answer is

#### QUESTION 44:

You plan to deploy three Azure virtual machines named VM1, VM2, and VM3. The virtual machines will host a web app named App1. You need to ensure that at least two virtual machines are available if a single Azure datacenter becomes unavailable. What should you deploy?

- A. all three virtual machines in a single Availability Zone
- B. all virtual machines in a single Availability Set
- C. each virtual machine in a separate Availability Zone
- D. each virtual machine in a separate Availability Set

The Answer is C

#### QUESTION 45:

You have an Azure virtual machine named VM1 that runs Windows Server 2019. You save VM1 as a template named Template1 to the Azure Resource Manager library. You plan to deploy a virtual machine named VM2 from Template1. What can you configure during the deployment of VM2?

- A. operating system
- B. administrator username
- C. virtual machine size
- D. resource group

The Answer is D

#### QUESTION 46:

You have an Azure subscription that contains an Azure virtual machine named VM1. VM1 runs a financial reporting app named App1 that does not support multiple active instances.

At the end of each month, CPU usage for VM1 peaks when App1 runs.

You need to create a scheduled runbook to increase the processor performance of VM1 at the end of each month.

What task should you include in the runbook?

- A. Add the Azure Performance Diagnostics agent to VM1.
- B. Modify the VM size property of VM1.
- C. Add VM1 to a scale set.
- D. Increase the vCPU quota for the subscription.
- E. Add a Desired State Configuration (DSC) extension to VM1.

The Answer is C

#### QUESTION 47:

You have an Azure virtual machine named VM1 that runs Windows Server 2019. You sign in to VM1 as a user named User1 and perform the following actions:

- ☞ Create files on drive C.
- ☞ Create files on drive D.
- ☞ Modify the screen saver timeout.
- ☞ Change the desktop background.

You plan to redeploy VM1.

Which changes will be lost after you redeploy VM1?

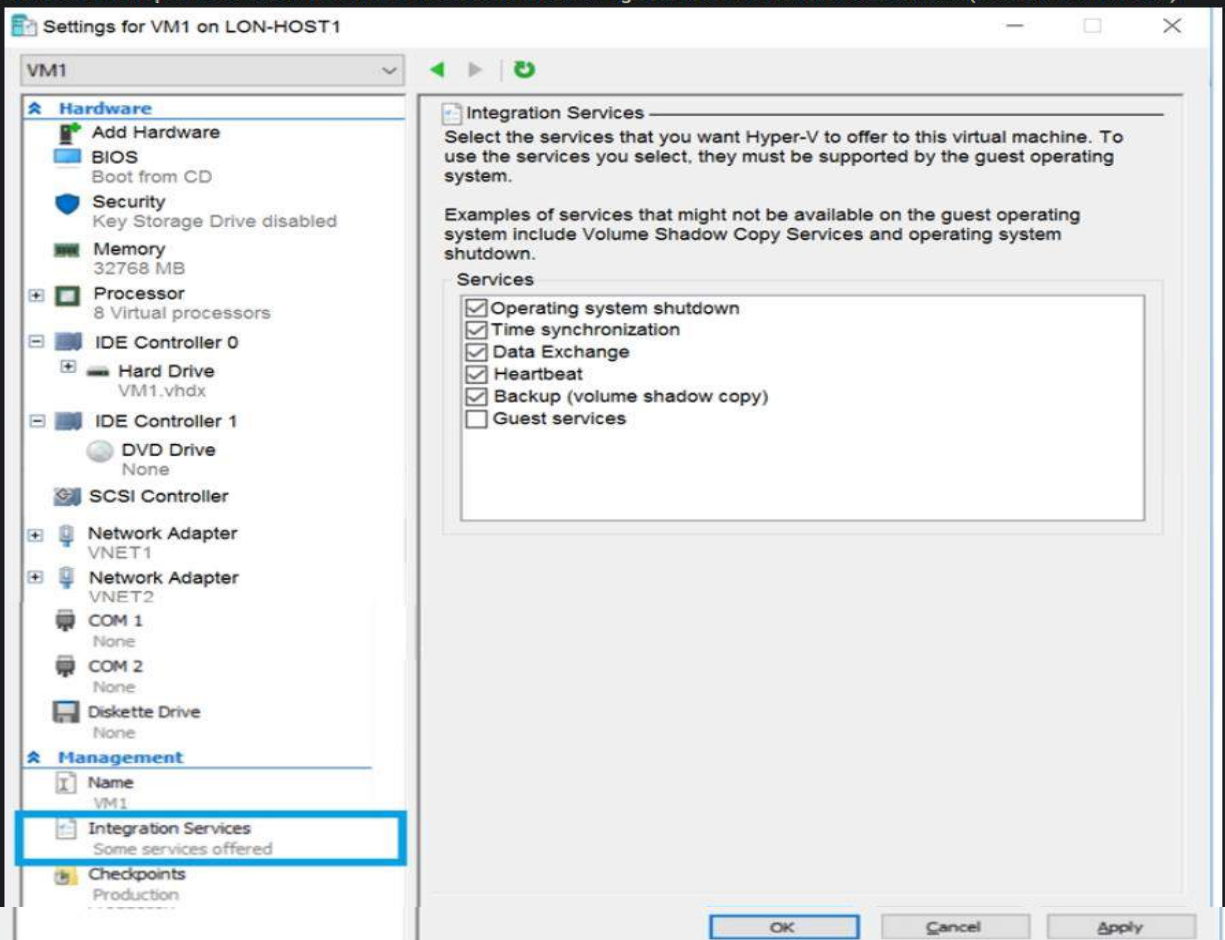
- A. the modified screen saver timeout
- B. the new desktop background
- C. the new files on drive D
- D. the new files on drive C

The Answer is C

#### QUESTION 48:

You have an Azure subscription.

You have an on-premises virtual machine named VM1. The settings for VM1 are shown in the exhibit. (Click the Exhibit tab.)



You need to ensure that you can use the disks attached to VM1 as a template for Azure virtual machines.

What should you modify on VM1?

- A. the memory
- B. the network adapters
- C. the hard drive
- D. the processor
- E. Integration Services

The Answer is C



## QUESTION 49:

### HOTSPOT -

You have an Azure subscription that contains a virtual machine scale set. The scale set contains four instances that have the following configurations:

⇒ Operating system: Windows Server 2016

⇒ Size: Standard\_D1\_v2

You run the get-azvmss cmdlet as shown in the following exhibit:

```
PS Azure:\> (Get-AzVmss -Name WebProd -ResourceGroupName RG1).VirtualMachineProfile.OsProfile.WindowsConfiguration

ProvisionVMAgent      : True
EnableAutomaticUpdates : False
TimeZone              :
AdditionalUnattendContent :
WinRM                  :

Azure:/
PS Azure:\> Get-AzVmss -Name WebProd -ResourceGroupName RG1 | Select -ExpandProperty UpgradePolicy

Mode RollingUpgradePolicy AutomaticOSUpgradePolicy
-----
Automatic                  Microsoft.Azure.Management.Compute.ModelsAutomaticOSUpgradePolicy

Azure:/
PS Azure:\> []
```

Use the drop-down menus to select the answer choice that completes each statement based on the information presented in the graphic.

NOTE: Each correct selection is worth one point.

Hot Area:

### Answer Area

When an administrator changes the virtual machine size, the size will be changed on up to **[answer choice]** virtual machines simultaneously.

	▼
0	
1	
2	
4	

When a new build of the Windows Server 2016 image is released, the new build will be deployed to up to **[answer choice]** virtual machines simultaneously.

	▼
0	
1	
2	
4	

The Answer is **4 & 1**

## QUESTION 50:

You have an Azure subscription named Subscription1 that is used by several departments at your company. Subscription1 contains the resources in the following table:

Name	Type
storage1	Storage account
RG1	Resource group
container1	Blob container
share1	File share

Another administrator deploys a virtual machine named VM1 and an Azure Storage account named storage2 by using a single Azure Resource Manager template.

You need to view the template used for the deployment.

From which blade can you view the template that was used for the deployment?

- A. VM1
- B. RG1
- C. storage2
- D. container1

The Answer is **B**

### QUESTION 51:

You have an Azure web app named App1. App1 has the deployment slots shown in the following table:

Name	Function
webapp1-prod	Production
webapp1-test	Staging

In webapp1-test, you test several changes to App1.

You back up App1.

You swap webapp1-test for webapp1-prod and discover that App1 is experiencing performance issues.

You need to revert to the previous version of App1 as quickly as possible.

What should you do?

- A. Redeploy App1
- B. Swap the slots
- C. Clone App1
- D. Restore the backup of App1

The Answer is B

### QUESTION 52:

#### HOTSPOT -

You have an Azure subscription named Subscription1. Subscription1 contains two Azure virtual machines VM1 and VM2. VM1 and VM2 run Windows Server 2016.

VM1 is backed up daily by Azure Backup without using the Azure Backup agent.

VM1 is affected by ransomware that encrypts data.

You need to restore the latest backup of VM1.

To which location can you restore the backup? To answer, select the appropriate options in the answer area.

NOTE: Each correct selection is worth one point.

Hot Area:

**Answer Area**

You can perform a file recovery of VM1 to:

You can restore VM1 to:

VM1 only
VM1 or a new Azure virtual machine only
VM1 and VM2 only
A new Azure virtual machine only
Any Windows computer that has Internet connectivity

VM1 only
VM1 or a new Azure virtual machine only
VM1 and VM2 only
Any Windows computer that has Internet connectivity

The Answer is

### QUESTION 53:

You have an Azure virtual machine named VM1 that runs Windows Server 2016.

You need to create an alert in Azure when more than two error events are logged to the System event log on VM1 within an hour.

Solution: You create an Azure Log Analytics workspace and configure the data settings. You add the Microsoft Monitoring Agent VM extension to VM1. You create an alert in Azure Monitor and specify the Log Analytics workspace as the source.

Does this meet the goal?

A. Yes

B. No

The Answer is **B**

### QUESTION 54:

You have an Azure virtual machine named VM1 that runs Windows Server 2016.

You need to create an alert in Azure when more than two error events are logged to the System event log on VM1 within an hour.

Solution: You create an Azure Log Analytics workspace and configure the data settings. You install the Microsoft Monitoring Agent on VM1. You create an alert in Azure Monitor and specify the Log Analytics workspace as the source.

Does this meet the goal?

A. Yes

B. No

The Answer is **A**

### QUESTION 55:

You have an Azure virtual machine named VM1 that runs Windows Server 2016.

You need to create an alert in Azure when more than two error events are logged to the System event log on VM1 within an hour.

Solution: You create an Azure storage account and configure shared access signatures (SASs). You install the Microsoft Monitoring Agent on VM1. You create an alert in Azure Monitor and specify the storage account as the source.

Does this meet the goal?

A. Yes

B. No

The Answer is **B**

### QUESTION 56:

You have an Azure subscription that contains the resources shown in the following table.

Name	Type	Region
RG1	Resource group	West US
RG2	Resource group	East Asia
storage1	Storage account	West US
storage2	Storage account	East Asia
VM1	Virtual machine	West US
VNET1	Virtual network	West US
VNET2	Virtual network	East Asia

VM1 connects to VNET1.

You need to connect VM1 to VNET2.

Solution: You move VM1 to RG2, and then you add a new network interface to VM1.

Does this meet the goal?

A. Yes

B. No

The Answer is **No**

**QUESTION 57:**

You have an Azure subscription that contains the resources shown in the following table.

Name	Type	Region
RG1	Resource group	West US
RG2	Resource group	East Asia
storage1	Storage account	West US
storage2	Storage account	East Asia
VM1	Virtual machine	West US
VNET1	Virtual network	West US
VNET2	Virtual network	East Asia

VM1 connects to VNET1.

You need to connect VM1 to VNET2.

Solution: You delete VM1. You recreate VM1, and then you create a new network interface for VM1 and connect it to VNET2.

Does this meet the goal?

A. Yes

B. No

The Answer is **Yes**

**QUESTION 58:**

You have an Azure subscription that contains the resources shown in the following table.

Name	Type	Region
RG1	Resource group	West US
RG2	Resource group	East Asia
storage1	Storage account	West US
storage2	Storage account	East Asia
VM1	Virtual machine	West US
VNET1	Virtual network	West US
VNET2	Virtual network	East Asia

VM1 connects to VNET1.

You need to connect VM1 to VNET2.

Solution: You turn off VM1, and then you add a new network interface to VM1.

Does this meet the goal?

A. Yes

B. No

The Answer is **No**



### QUESTION 59:

#### HOTSPOT -

You have an Azure subscription named Subscription1 that contains the quotas shown in the following table.

Quota	Location	Usage
Standard BS Family vCPUs	West US	0 of 20
Standard D Family vCPUs	West US	0 of 20
Total Regional vCPUs	West US	0 of 20

You deploy virtual machine to Subscription1 as shown in the following table.

Name	Size	vCPUs	Location	Status
VM1	Standard_B2ms	2	West US	Running
VM20	Standard_B16ms	16	West US	Stopped (Deallocated)

You plan to deploy the virtual machines shown in the following table.

Name	Size	vCPUs
VM3	Standard_B2ms	1
VM4	Standard_D4s_v3	4
VM5	Standard_B16ms	16

For each of the following statements, select Yes if the statement is true. Otherwise, select No.

NOTE: Each correct selection is worth one point.

Hot Area:

#### Answer Area

Statements	Yes	No
You can deploy VM3 to West US.	<input type="radio"/>	<input type="radio"/>
You can deploy VM4 to West US.	<input type="radio"/>	<input type="radio"/>
You can deploy VM5 to West US.	<input type="radio"/>	<input type="radio"/>

The Answer is **Yes No No**

### QUESTION 60:

#### HOTSPOT -

You have an Azure subscription that contains an Azure Availability Set named WEBPROD-AS-USE2 as shown in the following exhibit.

```
PS Azure:\> az vm availability-set list --g RG1
[
  {
    "id": "/subscriptions/8372f433-2dcd-4361-b5ef-5b188fed87d0/resourceGroups/RG1/providers/Microsoft.Compute/availabilitySets/WEBPROD-AS-USE2",
    "location": "eastus2",
    "name": "WEBPROD-AS-USE2",
    "platformFaultDomainCount": 2,
    "platformUpdateDomainCount": 10,
    "proximityPlacementGroup": null,
    "resourceGroup": "RG1",
    "sku": {
      "capacity": null,
      "name": "Aligned",
      "tier": null
    },
    "statuses": null,
    "tags": {},
    "type": "Microsoft.Compute/availabilitySets",
    "virtualMachines": []
  }
]
```

You add 14 virtual machines to WEBPROD-AS-USE2.

Use the drop-down menus to select the answer choice that completes each statement based on the information presented in the graphic.

NOTE: Each correct selection is worth one point.

Hot Area:

#### Answer Area

When Microsoft performs planned maintenance in East US 2, the maximum number of unavailable virtual machines will be **[answer choice]**.

▼

2

7

10

14

If the server rack in the Azure datacenter that hosts WEBPROD-AS-USE2 experiences a power failure, the maximum number of unavailable virtual machines will be **[answer choice]**.

▼

2

7

10

14

The Answer is **2 & 7**

### QUESTION 61:

You deploy an Azure Kubernetes Service (AKS) cluster named Cluster1 that uses the IP addresses shown in the following table.

IP address	Assigned to
131.107.2.1	Load balancer front end
192.168.10.2	Kubernetes DNS service
172.17.7.1	Docker bridge address
10.0.10.11	Kubernetes cluster node

You need to provide internet users with access to the applications that run in Cluster1.

Which IP address should you include in the DNS record for Cluster1?

- A. 131.107.2.1
- B. 10.0.10.11
- C. 172.17.7.1
- D. 192.168.10.2

The Answer is A

### QUESTION 62:

You have a deployment template named Template1 that is used to deploy 10 Azure web apps.

You need to identify what to deploy before you deploy Template1. The solution must minimize Azure costs.

What should you identify?

- A. five Azure Application Gateways
- B. one App Service plan
- C. 10 App Service plans
- D. one Azure Traffic Manager
- E. one Azure Application Gateway

The Answer is B

### QUESTION 63:

#### HOTSPOT -

You plan to deploy an Azure container instance by using the following Azure Resource Manager template.

```
{
  "type": "Microsoft.ContainerInstance/containerGroups",
  "apiVersion": "2018-10-01",
  "name": "webprod",
  "location": "westus",
  "properties": {
    "containers": [
      {
        "name": "webprod",
        "properties": {
          "image": "microsoft/iis:nanoserver",
          "ports": [
            {
              "protocol": "TCP",
              "port": 80
            }
          ],
          "environmentVariables": [ ],
          "resources": {
            "requests": {
              "memoryInGB": 1.5,
              "cpu": 1
            }
          }
        }
      }
    ],
    "restartPolicy": "OnFailure",
    "ipAddress": {
      "ports": [
        {
          "protocol": "TCP",
          "port": 80
        }
      ],
      "ip": "[parameters('IPAddress')]",
      "type": "Public"
    },
    "osType": "Windows"
  }
}
```

Use the drop-down menus to select the answer choice that completes each statement based on the information presented in the template.

Hot Area:

Answer Area	
Internet users [answer choice].	<div>can connect to the container from any device</div> <div>cannot connect to the container</div> <div>can only connect to the container from devices that run Windows</div>
If Internet Information Services (IIS) in the container fail, [answer choice].	<div>the container will restart automatically</div> <div>the container will only restart manually</div> <div>the container must be redeployed</div>

The Answer is

## QUESTION 64:

You have an Azure subscription that contains a virtual machine named VM1. VM1 hosts a line-of-business application that is available 24 hours a day. VM1 has one network interface and one managed disk. VM1 uses the D4s v3 size.

You plan to make the following changes to VM1:

- ☞ Change the size to D8s v3.
- ☞ Add a 500-GB managed disk.
- ☞ Add the Puppet Agent extension.
- ☞ Enable Desired State Configuration Management.

Which change will cause downtime for VM1?

- A. Enable Desired State Configuration Management
- B. Add a 500-GB managed disk
- C. Change the size to D8s v3
- D. Add the Puppet Agent extension

The Answer is C

## QUESTION 65:

You have an app named App1 that runs on an Azure web app named webapp1.

The developers at your company upload an update of App1 to a Git repository named Git1.

Webapp1 has the deployment slots shown in the following table.

Name	Function
webapp1-prod	Production
webapp1-test	Staging

You need to ensure that the App1 update is tested before the update is made available to users.

Which two actions should you perform? Each correct answer presents part of the solution.

- A. Swap the slots
- B. Deploy the App1 update to webapp1-prod, and then test the update
- C. Stop webapp1-prod
- D. Deploy the App1 update to webapp1-test, and then test the update
- E. Stop webapp1-test

The Answer is D & A

## QUESTION 66:

You have an Azure subscription named Subscription1 that has the following providers registered:

- ☞ Authorization
- ☞ Automation
- ☞ Resources
- ☞ Compute
- ☞ KeyVault
- ☞ Network
- ☞ Storage
- ☞ Billing
- ☞ Web

Subscription1 contains an Azure virtual machine named VM1 that has the following configurations:

- ☞ Private IP address: 10.0.0.4 (dynamic)
- ☞ Network security group (NSG): NSG1
- ☞ Public IP address: None
- ☞ Availability set: AVSet
- ☞ Subnet: 10.0.0.0/24
- ☞ Managed disks: No

Location: East US -



You need to record all the successful and failed connection attempts to VM1.

Which three actions should you perform? Each correct answer presents part of the solution.

NOTE: Each correct selection is worth one point.

- A. Enable Azure Network Watcher in the East US Azure region.
- B. Add an Azure Network Watcher connection monitor.
- C. Register the MicrosoftLogAnalytics provider.
- D. Create an Azure Storage account.
- E. Register the Microsoft.Insights resource provider.
- F. Enable Azure Network Watcher flow logs.

The Answer is B C D

### QUESTION 67:

You need to deploy an Azure virtual machine scale set that contains five instances as quickly as possible. What should you do?

- A. Deploy five virtual machines. Modify the Availability Zones settings for each virtual machine.
- B. Deploy five virtual machines. Modify the Size setting for each virtual machine.
- C. Deploy one virtual machine scale set that is set to VM (virtual machines) orchestration mode.
- D. Deploy one virtual machine scale set that is set to ScaleSetVM orchestration mode.

The Answer is D

### QUESTION 68:

You plan to create the Azure web apps shown in the following table.

Name	Runtime stack
WebApp1	.NET Core 3.0
WebApp2	ASP.NET V4.7
WebApp3	PHP 7.3
WebApp4	Ruby 2.6

What is the minimum number of App Service plans you should create for the web apps?

- A. 1
- B. 2
- C. 3
- D. 4

The Answer is B

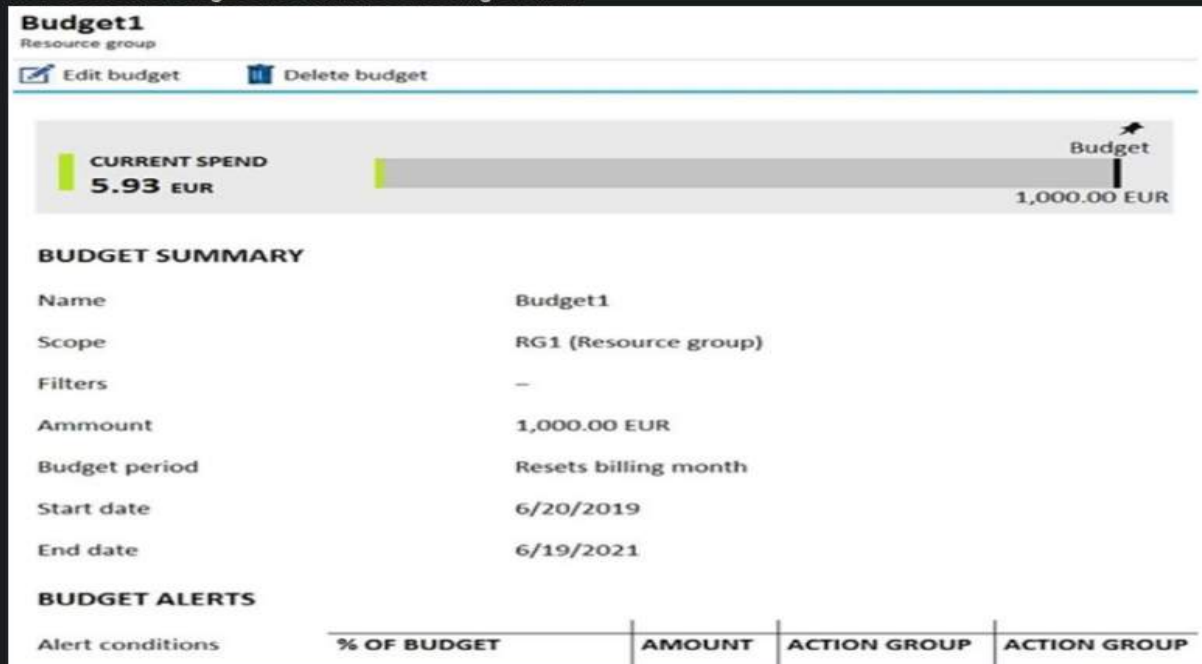
### QUESTION 69:

HOTSPOT -

You have a pay-as-you-go Azure subscription that contains the virtual machines shown in the following table.

Name	Resource group	Daily cost
VM1	RG1	20 euros
VM2	RG2	30 euros

You create the budget shown in the following exhibit.





50%	€500	AG1	1 Email
70%	€700	AG2	1 SMS
100%	€1,000	AG3	1 Azure app
Alert recipients (email)	User1@Contoso.com		

The AG1 action group contains a user named admin@contoso.com only.

Use the drop-down menus to select the answer choice that completes each statement based on the information presented in the graphic.

Hot Area:

**Answer Area**

When the maximum amount in Budget1 is reached, [answer choice].

Based on the current usage costs of the virtual machines, [answer choice].

VM1 and VM2 are turned off  
VM1 and VM2 continue to run  
VM1 is turned off, and VM2 continues to run

no email notifications will be sent each month  
one email notification will be sent each month  
two email notifications will be sent each month  
three email notifications will be sent each month

The Answer is

#### QUESTION 70:

You have an Azure subscription that contains 10 virtual networks. The virtual networks are hosted in separate resource groups. Another administrator plans to create several network security groups (NSGs) in the subscription.

You need to ensure that when an NSG is created, it automatically blocks TCP port 8080 between the virtual networks.

Solution: From the Resource providers blade, you unregister the Microsoft.ClassicNetwork provider.

Does this meet the goal?

- A. Yes
- B. No

The Answer is B

#### QUESTION 72:

You have an Azure subscription that contains 10 virtual networks. The virtual networks are hosted in separate resource groups. Another administrator plans to create several network security groups (NSGs) in the subscription.

You need to ensure that when an NSG is created, it automatically blocks TCP port 8080 between the virtual networks.

Solution: You assign a built-in policy definition to the subscription.

Does this meet the goal?

- A. Yes
- B. No

The Answer is B

#### QUESTION 73:

You have an Azure subscription that contains 10 virtual networks. The virtual networks are hosted in separate resource groups. Another administrator plans to create several network security groups (NSGs) in the subscription.

You need to ensure that when an NSG is created, it automatically blocks TCP port 8080 between the virtual networks.

Solution: You configure a custom policy definition, and then you assign the policy to the subscription.

Does this meet the goal?

- A. Yes
- B. No

The Answer is A

## QUESTION 74:

You have two Azure virtual networks named VNet1 and VNet2. VNet1 contains an Azure virtual machine named VM1. VNet2 contains an Azure virtual machine named VM2.

VM1 hosts a frontend application that connects to VM2 to retrieve data.

Users report that the frontend application is slower than usual.

You need to view the average round-trip time (RTT) of the packets from VM1 to VM2.

Which Azure Network Watcher feature should you use?

- A. IP flow verify
- B. Connection troubleshoot
- C. Connection monitor
- D. NSG flow logs

The Answer is C

## QUESTION 75:

You have an Azure subscription that contains a policy-based virtual network gateway named GW1 and a virtual network named VNet1.

You need to ensure that you can configure a point-to-site connection from an on-premises computer to VNet1.

Which two actions should you perform? Each correct answer presents part of the solution.

NOTE: Each correct selection is worth one point.

- A. Add a service endpoint to VNet1
- B. Reset GW1
- C. Create a route-based virtual network gateway
- D. Add a connection to GW1
- E. Delete GW1
- F. Add a public IP address space to VNet1

The Answer is C & E

## QUESTION 76:

HOTSPOT -

You have an Azure subscription that contains the resources in the following table:

Name	Type
VMRG	Resource group
VNet1	Virtual network
VNet2	Virtual network
VM5	Virtual machine connected to VNet1
VM6	Virtual machine connected to VNet2

In Azure, you create a private DNS zone named adatum.com. You set the registration virtual network to VNet2. The adatum.com zone is configured as shown in the following exhibit:

Resource group ([change](#))  
[vmrg](#)

Subscription ([change](#))  
[Azure Pass](#)

Subscription ID  
a4fde29b-d56a-4f6c-8298-6c53cd0b720c

Tags ([change](#))  
[Click here to add tags](#)

Name server 1  
-

Name server 2  
-

Name server 3  
-

Name server 4  
-

Search record sets

Name	Type	TTL	VALUE
@	SOA	3600	Email: azuredns-hostmaster.microsoft.com Host: internal.cloudapp.net Refresh: 3600 Retry: 300 Expire: 2419200 Minimum TTL: 300 Serial number: 1

vm1	A	3600	10.1.0.4
vm9	A	3600	10.1.0.12

For each of the following statements, select Yes if the statement is true. Otherwise, select No.

NOTE: Each correct selection is worth one point.

Hot Area:

## Answer Area

Statements	Yes	No
The A record for VM5 will be registered automatically in the adatum.com zone.	<input type="radio"/>	<input type="radio"/>
VM5 can resolve VM9.adatum.com.	<input type="radio"/>	<input type="radio"/>
VM6 can resolve VM9.adatum.com.	<input type="radio"/>	<input type="radio"/>

The Answer is **No No Yes**

### QUESTION 77:

HOTSPOT -

You have an Azure subscription that contains a virtual network named VNet1. VNet1 uses an IP address space of 10.0.0.0/16 and contains the subnets in the following table:

Name	IP address range
Subnet0	10.0.0.0/24
Subnet1	10.0.1.0/24
Subnet2	10.0.2.0/24
GatewaySubnet	10.0.254.0/24

Subnet1 contains a virtual appliance named VM1 that operates as a router.

You create a routing table named RT1.

You need to route all inbound traffic from the VPN gateway to VNet1 through VM1.

How should you configure RT1? To answer, select the appropriate options in the answer area.

NOTE: Each correct selection is worth one point.

Hot Area:

## Answer Area

Address prefix

Next hop type

Assigned to

10.0.0.0/16  
10.0.1.0/24  
10.0.254.0/24

Virtual appliance  
Virtual network  
Virtual network gateway

GatewaySubnet  
Subnet0  
Subnet1 and Subnet2

The Answer is

### QUESTION 78:

You have five Azure virtual machines that run Windows Server 2016. The virtual machines are configured as web servers. You have an Azure load balancer named LB1 that provides load balancing services for the virtual machines. You need to ensure that visitors are serviced by the same web server for each request. What should you configure?

- A. Floating IP (direct server return) to Enabled
- B. Idle Time-out (minutes) to 20
- C. Protocol to UDP
- D. Session persistence to Client IP and Protocol

The Answer is **D**

### QUESTION 79:

You have an Azure subscription that contains the virtual machines shown in the following table:

Name	Operating system	Connects to
VM1	Windows Server 2019	Subnet1
VM2	Windows Server 2019	Subnet2

VM1 and VM2 use public IP addresses. From Windows Server 2019 on VM1 and VM2, you allow inbound Remote Desktop connections. Subnet1 and Subnet2 are in a virtual network named VNET1.

The subscription contains two network security groups (NSGs) named NSG1 and NSG2. NSG1 uses only the default rules. NSG2 uses the default rules and the following custom incoming rule:

- ☞ Priority: 100
- ☞ Name: Rule1
- ☞ Port: 3389
- ☞ Protocol: TCP
- ☞ Source: Any
- ☞ Destination: Any
- ☞ Action: Allow

NSG1 is associated to Subnet1. NSG2 is associated to the network interface of VM2.

For each of the following statements, select Yes if the statement is true. Otherwise, select No.

NOTE: Each correct selection is worth one point.

Hot Area:

#### Answer Area

Statements	Yes	No
From the Internet, you can connect to VM1 by using Remote Desktop.	<input type="radio"/>	<input type="radio"/>
From the Internet, you can connect to VM2 by using Remote Desktop.	<input type="radio"/>	<input type="radio"/>
From VM1, you can connect to VM2 by using Remote Desktop.	<input type="radio"/>	<input type="radio"/>

The Answer is **No Yes Yes**



**QUESTION 80:**

You have a virtual network named VNET1 that contains the subnets shown in the following table:

Name	Subnet	Network security group (NSG)
Subnet1	10.10.1.0/24	NSG1
Subnet2	10.10.2.0/24	None

You have two Azure virtual machines that have the network configurations shown in the following table:

Name	Subnet	IP address	NSG
VM1	Subnet1	10.10.1.5	NSG2
VM2	Subnet2	10.10.2.5	None
VM3	Subnet2	10.10.2.6	None

For NSG1, you create the inbound security rule shown in the following table:

Priority	Source	Destination	Destination port	Action
101	10.10.2.0/24	10.10.1.0/24	TCP/1433	Allow

For NSG2, you create the inbound security rule shown in the following table:

Priority	Source	Destination	Destination port	Action
125	10.10.2.5	10.10.1.5	TCP/1433	Block

For each of the following statements, select Yes if the statement is true. Otherwise, select No.

NOTE: Each correct selection is worth one point.

Hot Area:

**Answer Area**

Statements	Yes	No
VM2 can connect to the TCP port 1433 services on VM1.	<input type="radio"/>	<input type="radio"/>
VM1 can connect to the TCP port 1433 services on VM2.	<input type="radio"/>	<input type="radio"/>
VM2 can connect to the TCP port 1433 services on VM3.	<input type="radio"/>	<input type="radio"/>

The Answer No Yes Yes

**QUESTION 81:**

HOTSPOT -

You have an Azure subscription named Subscription1.

Subscription1 contains the virtual machines in the following table:

Name	IP address
VM1	10.0.1.4
VM2	10.0.2.4
VM3	10.0.3.4

Subscription1 contains a virtual network named VNet1 that has the subnets in the following table:

Name	Address space	Connected virtual machine
Subnet1	10.0.1.0/24	VM1
Subnet2	10.0.2.0/24	VM2
Subnet3	10.0.3.0/24	VM3

VM3 has multiple network adapters, including a network adapter named NIC3. IP forwarding is enabled on NIC3. Routing is enabled on VM3.

You create a route table named RT1 that contains the routes in the following table:

Address prefix	Next hop type	Next hop address
10.0.1.0/24	Virtual appliance	10.0.3.4
10.0.2.0/24	Virtual appliance	10.0.3.4

You apply RT1 to Subnet1 and Subnet2.

For each of the following statements, select Yes if the statement is true. Otherwise, select No.

NOTE: Each correct selection is worth one point.

Hot Area:

**Answer Area**

Statements	Yes	No
VM3 can establish a network connection to VM1.	<input type="radio"/>	<input type="radio"/>
If VM3 is turned off, VM2 can establish a network connection to VM1.	<input type="radio"/>	<input type="radio"/>
VM1 can establish a network connection to VM2.	<input type="radio"/>	<input type="radio"/>

The Answer Yes No No

## QUESTION 82:

Your on-premises network contains an SMB share named Share1.  
You have an Azure subscription that contains the following resources:  
⇒ A web app named webapp1  
⇒ A virtual network named VNET1  
You need to ensure that webapp1 can connect to Share1.  
What should you deploy?

- A. an Azure Application Gateway
- B. an Azure Active Directory (Azure AD) Application Proxy
- C. an Azure Virtual Network Gateway

The Answer is C

## QUESTION 83:

You plan to deploy several Azure virtual machines that will run Windows Server 2019 in a virtual machine scale set by using an Azure Resource Manager template.  
You need to ensure that NGINX is available on all the virtual machines after they are deployed.  
What should you use?

- A. Azure Active Directory (Azure AD) Application Proxy
- B. Azure Application Insights
- C. Azure Custom Script Extension
- D. the New-AzConfigurationAssignment cmdlet

The Answer is C

## QUESTION 84:

### HOTSPOT -

You have an Azure subscription named Sub1.

You plan to deploy a multi-tiered application that will contain the tiers shown in the following table.

Tier	Accessible from the Internet	Number of virtual machines
Front-end web server	Yes	10
Business logic	No	100
Microsoft SQL Server database	No	5

You need to recommend a networking solution to meet the following requirements:

- ⇒ Ensure that communication between the web servers and the business logic tier spreads equally across the virtual machines.
- ⇒ Protect the web servers from SQL injection attacks.

Which Azure resource should you recommend for each requirement? To answer, select the appropriate options in the answer area.

NOTE: Each correct selection is worth one point.

Hot Area:

### Answer Area

Ensure that communication between the web servers and the business logic tier spreads equally across the virtual machines:

- ☒ an application gateway that uses the Standard tier
- ☒ an application gateway that uses the WAF tier
- ☐ an internal load balancer
- ☐ a network security group (NSG)
- ☐ a public load balancer

Protect the web servers from SQL injection attacks:

- ☒ an application gateway that uses the Standard tier
- ☒ an application gateway that uses the WAF tier
- ☐ an internal load balancer
- ☐ a network security group (NSG)
- ☐ a public load balancer

The Answer is

### QUESTION 85:

Your company has three offices. The offices are located in Miami, Los Angeles, and New York. Each office contains datacenter.

You have an Azure subscription that contains resources in the East US and West US Azure regions. Each region contains a virtual network. The virtual networks are peered.

You need to connect the datacenters to the subscription. The solution must minimize network latency between the datacenters.

What should you create?

- A. three Azure Application Gateways and one On-premises data gateway
- B. three virtual hubs and one virtual WAN
- C. three virtual WANs and one virtual hub
- D. three On-premises data gateways and one Azure Application Gateway

The Answer is B

# AZURE ADMINISTRATOR EXAM 103 Q&A

Q1:

You have an Azure Active Directory (Azure AD) tenant named Adatum and an Azure Subscription named Subscription1. Adatum contains a group named Developers. Subscription1 contains a resource group named Dev.

You need to provide the Developers group with the ability to create Azure logic apps in the Dev resource group.

Solution: On Dev, you assign the Contributor role to the Developers group.

Does this meet the goal?

A. Yes

B. No

The Answer Is **A**

Q2:

You have an Azure Active Directory (Azure AD) tenant named Adatum and an Azure Subscription named Subscription1. Adatum contains a group named Developers. Subscription1 contains a resource group named Dev.

You need to provide the Developers group with the ability to create Azure logic apps in the Dev resource group.

Solution: On Subscription1, you assign the Logic App Operator role to the Developers group.

Does this meet the goal?

A. Yes

B. No

The Answer is **B**

Q 3:

You have an Azure Active Directory (Azure AD) tenant named Adatum and an Azure Subscription named Subscription1. Adatum contains a group named Developers. Subscription1 contains a resource group named Dev.

You need to provide the Developers group with the ability to create Azure logic apps in the Dev resource group.

Solution: On Dev, you assign the Logic App Contributor role to the Developers group.

Does this meet the goal?

A. Yes

B. No

The Answer Is **A**

Q4:

You have an Azure subscription named Subscription1 that contains an Azure Log Analytics workspace named Workspace1.

You need to view the error events from a table named Event.

Which query should you run in Workspace1?

A. `Get-Event Event | where {$_.EventType -eq "error"}`

B. `Get-Event Event | where {$_.EventType == "error"}`

C. `search in (Event) * | where EventType -eq "error"`

D. `search in (Event) "error"`

E. `select *from Event where EventType == "error"`

F. `Event | where EventType is "error"`

The Answer is **D**



Q5:

You have an Azure subscription named Subscription1. Subscription1 contains the resource groups in the following table.

Name	Azure region	Policy
RG1	West Europe	Policy1
RG2	North Europe	Policy2
RG3	France Central	Policy3

RG1 has a web app named WebApp1. WebApp1 is located in West Europe.

You move WebApp1 to RG2.

What is the effect of the move?

- A. The App Service plan for WebApp1 moves to North Europe. Policy2 applies to WebApp1.
- B. The App Service plan for WebApp1 remains in West Europe. Policy2 applies to WebApp1.
- C. The App Service plan for WebApp1 moves to North Europe. Policy1 applies to WebApp1.
- D. The App Service plan for WebApp1 remains in West Europe. Policy1 applies to WebApp1.

The Answer is **B**

Q6:

You have an Azure subscription that contains a resource group named RG1. RG1 contains 100 virtual machines.

Your company has three cost centers named Manufacturing, Sales, and Finance.

You need to associate each virtual machine to a specific cost center.

What should you do?

- A. Configure locks for the virtual machine.
- B. Add an extension to the virtual machines.
- C. Assign tags to the virtual machines.
- D. Modify the inventory settings of the virtual machine.

The Answer is **C**

Q7:

You have an Azure subscription named Subscription1. Subscription1 contains a resource group named RG1. RG1 contains resources that were deployed by using templates.

You need to view the date and time when the resources were created in RG1.

Solution: From the Subscriptions blade, you select the subscription, and then click Resource providers.

Does this meet the goal?

- A. Yes
- B. No

The Answer is **No**

Q8:

**HOTSPOT -**

You have an Azure subscription.

You plan to use Azure Resource Manager templates to deploy 50 Azure virtual machines that will be part of the same availability set.

You need to ensure that as many virtual machines as possible are available if the fabric fails or during servicing.

How should you configure the template? To answer, select the appropriate options in the answer area.

NOTE: Each correct selection is worth one point.

Hot Area:

**Answer Area**

```
{
  "$schema": "https://schema.management.azure.com/schemas/2015-01-01/deploymentTemplate.json",
  "contentVersion": "1.0.0.0",
  "parameters": {},
  "resources": [
    {
      "type": "Microsoft.Compute/availabilitySets",
      "name": "ha",
      "apiVersion": "2017-12-01",
      "location": "eastus",
      "properties": {
        "platformFaultDomainCount": [
          [
            "max value",
            "0",
            "20"
          ]
        ],
        "platformUpdateDomainCount": [
          [
            "max value",
            "0",
            "20"
          ]
        ]
      }
    }
  ]
}
```

The Answer is **Max Value (2 or 3) & 20**

Q9:

**HOTSPOT -**

You have an Azure subscription named Subscription1 that has a subscription ID of c276fc76-9cd4-44c9-99a7-4fd71546436e.

You need to create a custom RBAC role named CR1 that meets the following requirements:

- ☑ Can be assigned only to the resource groups in Subscription1
- ☑ Prevents the management of the access permissions for the resource groups
- ☑ Allows the viewing, creating, modifying, and deleting of resource within the resource groups

What should you specify in the assignable scopes and the permission elements of the definition of CR1? To answer, select the appropriate options in the answer area.

NOTE: Each correct selection is worth one point.

Hot Area:

**Answer Area**

```
"assignableScopes": [
  [
    "/subscriptions/c276fc76-9cd4-44c9-99a7-4fd71546436e"
    "/subscriptions/c276fc76-9cd4-44c9-99a7-4fd71546436e/resourceGroups"
  ]
],
"permissions": [
  {
    "actions": [
      "*"
    ],
    "additionalProperties": {},
    "dataActions": [],
    "notActions": [
      "Microsoft.Authorization/*"
      "Microsoft.Resources/*"
      "Microsoft.Security/*"
    ]
  }
],
"notDataActions": []
}
```

The Answer is

Q10:

**HOTSPOT -**

You have an Azure Active Directory (Azure AD) tenant that contains three global administrators named Admin1, Admin2, and Admin3.

The tenant is associated to an Azure subscription. Access control for the subscription is configured as shown in the Access control exhibit. (Click the Exhibit tab.)

5 items (4 Users, 1 Service Principals)

NAME	TYPE	ROLE	SCOPE
Admin3	User	Service administrator	This resource

You sign in to the Azure portal as Admin1 and configure the tenant as shown in the Tenant exhibit. (Click the Exhibit tab.)

Global admin can manage Azure Subscriptions and Management Groups

Yes No

Directory ID: a8ccb016-31f3-4582-b9b7-854f413d7177

Technical contact:

Global privacy contact:

Privacy statement URL:

For each of the following statements, select Yes if the statement is true. Otherwise, select No.

NOTE: Each correct selection is worth one point.

Hot Area:

**Answer Area**

Statements	Yes	No
Admin1 can add Admin2 as an owner of the subscription.	<input type="radio"/>	<input type="radio"/>
Admin2 can add Admin1 as an owner of the subscription.	<input type="radio"/>	<input type="radio"/>
Admin2 can create a resource group in the subscription.	<input type="radio"/>	<input type="radio"/>

The Answer is **Yes Yes No**

Q11:

You have an Azure Active Directory (Azure AD) tenant named Adatum and an Azure Subscription named Subscription1. Adatum contains a group named Developers. Subscription1 contains a resource group named Dev.

You need to provide the Developers group with the ability to create Azure logic apps in the Dev resource group.

Solution: On Subscription1, you assign the DevTest Labs User role to the Developers group.

Does this meet the goal?

- A. Yes
- B. No

The Answer is **No**

Q12:

HOTSPOT -

You have an Azure subscription named Subscription1.

You plan to deploy an Ubuntu Server virtual machine named VM1 to Subscription1.

You need to perform a custom deployment of the virtual machine. A specific trusted root certification authority (CA) must be added during the deployment.

What should you do? To answer, select the appropriate options in the answer area.

NOTE: Each correct selection is worth one point.

Hot Area:

**Answer Area**

File to create:

- ☒ Answer.ini
- ☐ Autounattend.conf
- ☐ Cloud-init.txt
- ☐ Unattend.xml

Tool to use to deploy the virtual machine:

- ☒ The az vm create command
- ☐ The Azure portal
- ☐ The New-AzureRmVM cmdlet

The Answer is

Q13:

HOTSPOT -

You have an Azure subscription named Subscription1.

In Subscription1, you create an alert rule named Alert1.

The Alert1 action group is configured as shown in the following exhibit.

```
PS Azure:\> Get-AzureRmActionGroup

ResourceGroupName : default-activitylogalerts
GroupShortName     : AG1
Enabled            : True
EmailReceivers     : {Action1_-EmailAction-}
SmsReceivers       : {Action1_-SMSAction-}
WebhookReceivers   : {}
Id                 : /subscriptions/a4fde29b-d56a-4f6c-8298-6c53cd8b720c/resourceGroups/default-activitylogalerts/providers/microsoft.insights/actionGroups/ActionGroup1
Name               : ActionGroup1
Type               : Microsoft.Insights/ActionGroups
Location           : Global
Tags               : {}
```

Alert1 alert criteria is triggered every minute.

Use the drop-down menus to select the answer choice that completes each statement based on the information presented in the graphic.

NOTE: Each correct selection is worth one point.

Hot Area:

**Answer Area**

The number of email messages that Alert1 will send in an hour is

- ☒ 0
- ☐ 4
- ☐ 6
- ☐ 12
- ☐ 60

The number of SMS messages that Alert1 will send in an hour is

- ☐ 0
- ☐ 4
- ☐ 6
- ☒ 12
- ☐ 60

The Answer is **60 & 12**



Q14:

**DRAG DROP**

You have an Azure subscription that is used by four departments in your company. The subscription contains 10 resource groups. Each department uses resources in several resource groups.

You need to send a report to the finance department. The report must detail the costs for each department.

Which three actions should you perform in sequence? To answer, move the appropriate actions from the list of actions to the answer area and arrange them in the correct order.

Select and Place:

Actions	Answer Area
Assign a tag to each resource group.	
Assign a tag to each resource.	
Download the usage report.	
From the Cost analysis blade, filter the view by tag.	
Open the <b>Resource costs</b> blade of each resource group.	

The Answer is **Assign a tag to each resource, From the cost analysis blade filter the view by tag and Download usage report**

Q15:

Your company has an Azure subscription named Subscription1.

The company also has two on-premises servers named Server1 and Server2 that run Windows Server 2016. Server1 is configured as a DNS server that has a primary DNS zone named adatum.com. Adatum.com contains 1,000 DNS records.

You manage Server1 and Subscription1 from Server2. Server2 has the following tools installed:

- ☞ The DNS Manager console
- ☞ Azure PowerShell
- ☞ Azure CLI 2.0

You need to move the adatum.com zone to Subscription1. The solution must minimize administrative effort.

What should you use?

- A. the Azure portal
- B. the DNS Manager console
- C. Azure PowerShell
- D. Azure CLI

The Answer is **D**

Q16:

You have a resource group named RG1. RG1 contains an Azure Storage account named storageaccount1 and a virtual machine named VM1 that runs Windows Server 2016. Storageaccount1 contains the disk files for VM1.

You apply a ReadOnly lock to RG1.

What can you do from the Azure portal?

- A. Generate an automation script for RG1.
- B. View the keys of storageaccount1.
- C. Start VM1.
- D. Upload a blob to storageaccount1.

The Answer is **A**

Q17:

You have an Azure subscription named Subscription1 that contains the following resource group:

- ☞ Name: RG1
- ☞ Region: West US
- ☞ Tag: "tag1": "value1"

You assign an Azure policy named Policy1 to Subscription1 by using the following configurations:

- ☞ Exclusions: None
- ☞ Policy definition: Append tag and its default value
- ☞ Assignment name: Policy1
- ☞ Parameters:
  - Tag name: Tag2
  - Tag value: Value2

After Policy1 is assigned, you create a storage account that has the following configurations:

- ☞ Name: storage1
- ☞ Location: West US
- ☞ Resource group: RG1
- ☞ Tags: "tag3": "value3"

You need to identify which tags are assigned to each resource.

What should you identify? To answer, select the appropriate options in the answer area.

NOTE: Each correct selection is worth one point.

Hot Area:

### Answer Area

Tags assigned to RG1:

<input type="checkbox"/>	"tag1": "value1" only
<input type="checkbox"/>	"tag2": "value2" only
<input type="checkbox"/>	"tag1": "value1" and "tag2": "value2"

Tags assigned to storage1:

<input type="checkbox"/>	"tag3": "value3" only
<input type="checkbox"/>	"tag1": "value1" and "tag3": "value3"
<input type="checkbox"/>	"tag2": "value2" and "tag3": "value3"
<input type="checkbox"/>	"tag1": "value1", "tag2": "value2", and "tag3": "value3"

The Answer is

Q18:

You have an Azure subscription.

You have 100 Azure virtual machines.

You need to quickly identify underutilized virtual machines that can have their service tier changed to a less expensive offering. Which blade should you use?

- A. Metrics
- B. Monitor
- C. Customer insights
- D. Advisor

The Answer is D

Q19:

You have an Azure subscription.

Users access the resources in the subscription from either home or from customer sites. From home, users must establish a point-to-site VPN to access the Azure resources. The users on the customer sites access the Azure resources by using site-to-site VPNs.

You have a line-of-business app named App1 that runs on several Azure virtual machine. The virtual machines run Windows Server 2016.

You need to ensure that the connections to App1 are spread across all the virtual machines.

What are two possible Azure services that you can use? Each correct answer presents a complete solution.

NOTE: Each correct selection is worth one point.

- A. an Azure Content Delivery Network (CDN)
- B. an Azure Application Gateway
- C. Traffic Manager
- D. an internal load balancer
- E. a public load balancer

The Answer is **B & D**

Q20:

#### HOTSPOT -

You have an Azure subscription.

You need to implement a custom policy that meets the following requirements:

- ☑ Ensures that each new resource group in the subscription has a tag named organization set to a value of Contoso
- ☑ Ensures that resource groups can be created from the Azure portal
- ☑ Ensures that compliance reports in the Azure portal are accruable


How should you complete the policy? To answer, select the appropriate options in the answer area.

NOTE: Each correct selection is worth one point.

Hot Area:

#### Answer Area

```
{
  "policyRule": {
    "if": {
      "allOf": [
        {
          "field": "type",
          "equals": "Microsoft.Resources/deployments"
        },
        {
          "not": {
            "field": "tags['organization']",
            "equals": "Contoso"
          }
        }
      ]
    },
    "then": {
      "effect": "Append",
      "details": [
        {
          "field": "tags['organization']",
          "value": "Contoso"
        }
      ]
    }
  }
}
```

The Answer is 

Q21:

#### HOTSPOT -

You have an Azure subscription that contains the resources in the following table.

You install the Web Server server role (IIS) on VM1 and VM2, and then add VM1 and VM2 to LB1.

LB1 is configured as shown in the LB1 exhibit. (Click the Exhibit tab.)

Essentials ^	
Resource group (change)	Backend pool
VMRG	Backend1 (2 virtual machines)
Location	Health probe
West Europe	Probe1 (HTTP:80/Probe1.htm)
Subscription name (change)	Load balancing rule
Azure Pass	Rule1 (TCP/80)
Subscription ID	NAT rules
e66d2b22-fde8-4af2-9323-d43516f6eb4e	-
SKU	Public IP address
Basic	104.40.178.194 (LB1)

Rule1 is configured as shown in the Rule1 exhibit. (Click the Exhibit tab.)

\* Name  
Rule1

\* IP Version  
☒ IPv4 ☐ IPv6

\* Frontend IP address ⓘ  
104.40.178.194 (LoadBalancerFrontEnd)

Protocol  
☒ TCP ☐ UDP

\* Port  
80

\* Backend port ⓘ  
80

Backend pool ⓘ  
Backend1 (2 virtual machines)

Health probe ⓘ  
Probe1 (HTTP:80/Probe1.htm)

Session persistence ⓘ  
None

Idle timeout (minutes) ⓘ  
 4

Floating IP (direct server return) ⓘ  
Disabled

For each of the following statements, select Yes if the statement is true. Otherwise, select No.

NOTE: Each correct selection is worth one point.

Hot Area:

#### Answer Area

Statements	Yes	No
VM1 is the same availability set as VM2.	<input type="radio"/>	<input type="radio"/>
If Probe1.htm is present on VM1 and VM2, LB1 will balance TCP port 80 between VM1 and VM2.	<input type="radio"/>	<input type="radio"/>
If you delete Rule1, LB1 will balance all the requests between VM1 and VM2 for all the ports.	<input type="radio"/>	<input type="radio"/>

The Answer is **Yes Yes No**



Q22:

**HOTSPOT -**

You have an Azure subscription named Subscription1 that is associated to an Azure Active Directory (Azure AD) tenant named AAD1. Subscription1 contains the objects in the following table.

Name	Type
Share1	Azure file share
Account1	Azure Storage account
RG1	Resource group
Vault1	Recovery Services vault

You plan to create a single backup policy for Vault1.

To answer, select the appropriate options in the answer area.

NOTE: Each correct selection is worth one point.

Hot Area:

**Answer Area**

You can create an Azure backup policy for:

In the backup policy that you create, you can configure the backups to be retained for up to:

The Answer is **Share1 Only & 99 Years**

Q23:

**HOTSPOT -**

You have an Azure subscription named Subscription1.

In Subscription1, you create an Azure file share named share1.

You create a shared access signature (SAS) named SAS1 as shown in the following exhibit.

**Allowed services**

☐ Blob ☒ File ☐ Queue ☐ Table

**Allowed resource types**

☒ Service ☒ Container ☒ Object

**Allowed permissions**

☒ Read ☒ Write ☐ Delete ☒ List ☐ Add ☐ Create ☐ Update ☐ Process

**Start and expiry date/time**

Start: 2018-09-01 2:00:00 PM

End: 2018-09-14 2:00:00 PM

(UTC+02:00) --- Current Timezone ---

**Allowed IP addresses**

193.77.134.10-193.77.134.50

**Allowed protocols**

☒ HTTPS only ☐ HTTPS and HTTP

**Signing key**

key1

**Generate SAS and connection string**

To answer, select the appropriate options in the answer area.

NOTE: Each correct selection is worth one point.

Hot Area:

**Answer Area**

If on September 2, 2018, you run Microsoft Azure Storage Explorer on a computer that has an IP address of 193.77.134.1, and you use SAS1 to connect to the storage account, you

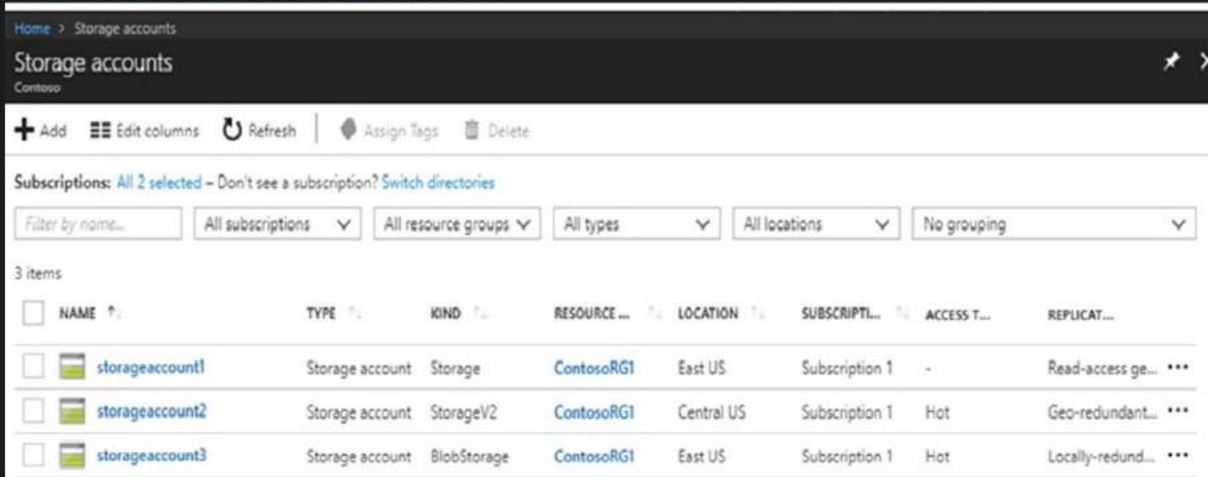
If on September 10, 2018, you run the net use command on a computer that has an IP address of 193.77.134.50, and you use SAS1 as the password to connect to share1, you

The Answer is **will have no access & will have read write and list access**

Q24:

HOTSPOT -

You have Azure Storage accounts as shown in the following exhibit.



Subscriptions: All 2 selected – Don't see a subscription? Switch directories

Filter by name... All subscriptions All resource groups All types All locations No grouping

3 items

NAME	TYPE	KIND	RESOURCE GROUP	LOCATION	SUBSCRIPTION	ACCESS T...	REPLICAT...
storageaccount1	Storage account	Storage	ContosoRG1	East US	Subscription 1	-	Read-access ge...
storageaccount2	Storage account	StorageV2	ContosoRG1	Central US	Subscription 1	Hot	Geo-redundant...
storageaccount3	Storage account	BlobStorage	ContosoRG1	East US	Subscription 1	Hot	Locally-redund...

Use the drop-down menus to select the answer choice that completes each statement based on the information presented in the graphic.

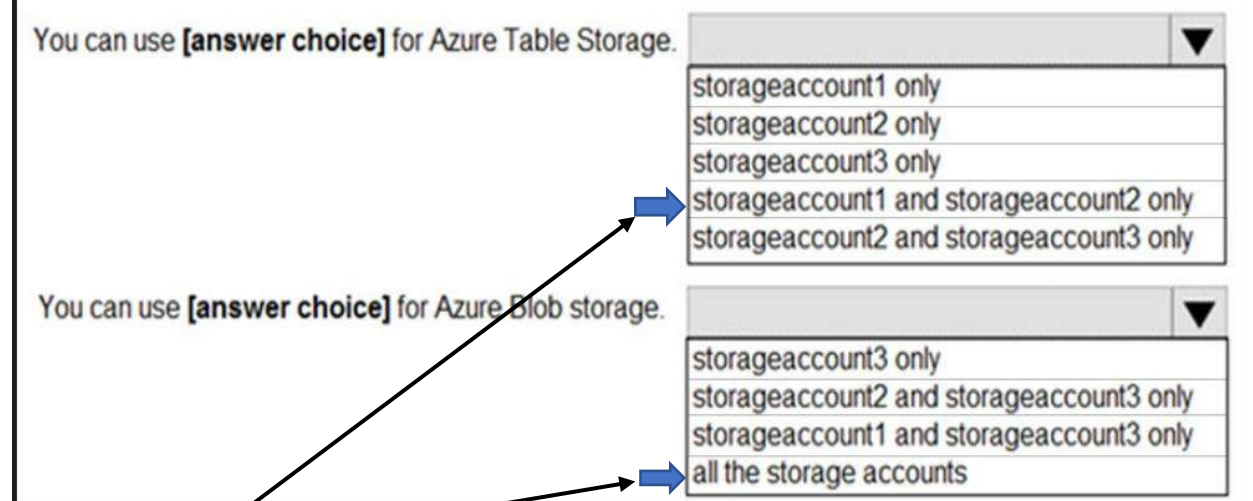
NOTE: Each correct selection is worth one point.

Hot Area:

**Answer Area**

You can use [answer choice] for Azure Table Storage.

You can use [answer choice] for Azure Blob storage.



storageaccount1 only

storageaccount2 only

storageaccount3 only

storageaccount1 and storageaccount2 only

storageaccount2 and storageaccount3 only

storageaccount3 only

storageaccount2 and storageaccount3 only

storageaccount1 and storageaccount3 only

all the storage accounts

The Answer is

Q25:

You plan to use the Azure Import/Export service to copy files to a storage account.

Which two files should you create before you prepare the drives for the import job? Each correct answer presents part of the solution.

NOTE: Each correct selection is worth one point.

- A. a driveset CSV file
- B. a JSON configuration file
- C. a PowerShell PS1 file
- D. an XML manifest file
- E. a dataset CSV file

The Answer is **A & E**

Q26:

You create an Azure Storage account named contosostorage.

You plan to create a file share named data.

Users need to map a drive to the data file share from home computers that run Windows 10.

Which outbound port should you open between the home computers and the data file share?

- A. 80
- B. 443
- C. 445
- D. 3389

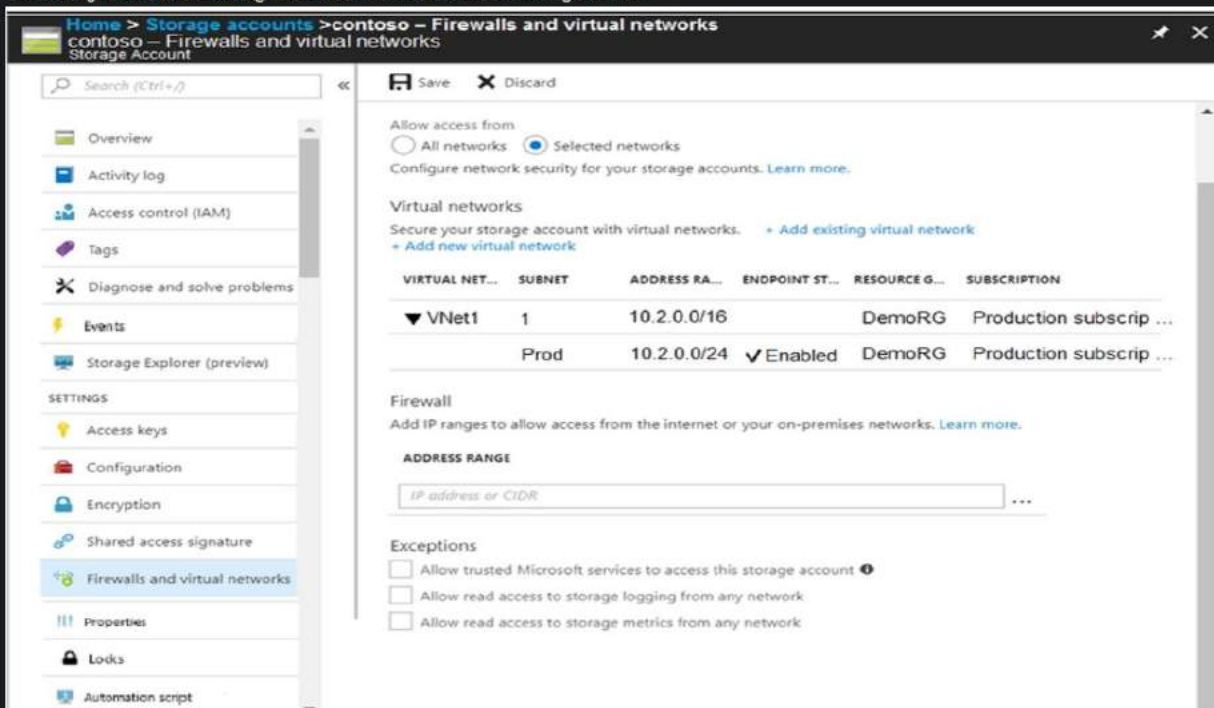
The Answer is C

Q27:

HOTSPOT -

You have several Azure virtual machines on a virtual network named VNet1.

You configure an Azure Storage account as shown in the following exhibit.



VIRTUAL NET...	SUBNET	ADDRESS RA...	ENDPOINT ST...	RESOURCE G...	SUBSCRIPTION
▼ VNet1	1	10.2.0.0/16		DemoRG	Production subscrip ...
	Prod	10.2.0.0/24	✓ Enabled	DemoRG	Production subscrip ...

Use the drop-down menus to select the answer choice that completes each statement based on the information presented in the graphic.

NOTE: Each correct selection is worth one point.

Hot Area:

### Answer Area

The virtual machines on the 10.2.9.0/24 subnet will have network connectivity to the file shares in the storage account

always

during a backup

never

Azure Backup will be able to back up the unmanaged hard disks of the virtual machines in the storage account

always

during a backup

never

The Answer is **Never Never**

Q28:

You have two Azure virtual machines named VM1 and VM2. You have two Recovery Services vaults named RSV1 and RSV2. VM2 is protected by RSV1. You need to use RSV2 to protect VM2. What should you do first?

- A. From the VM2 blade, click Disaster recovery, click Replication settings, and then select RSV2 as the Recovery Services vault.
- B. From the RSV2 blade, click Backup. From the Backup blade, select the backup for the virtual machine, and then click Backup.
- C. From the RSV1 blade, click Backup Jobs and export the VM2 job.
- D. From the RSV1 blade, click Backup items and stop the VM2 backup.

The Answer is A

Q29:

**HOTSPOT -**  
You plan to deploy 20 Azure virtual machines by using an Azure Resource Manager template. The virtual machines will run the latest version of Windows Server 2016 Datacenter by using an Azure Marketplace image. You need to complete the storageProfile section of the template. How should you complete the storageProfile section? To answer, select the appropriate options in the answer area. NOTE: Each correct selection is worth one point.  
Hot Area:

### Answer Area

```
"storageProfile": {  
  "imageReference": {  
    "publisher": "MicrosoftWindowsServer",  
    "offer": "  
  "sku": "  
    "version": "latest"  
  },  
  ...  
}
```

The Answer is **Windows Server & 2016 Data Center**

Q30:

**HOTSPOT -**  
You need to create an Azure Storage account that meets the following requirements:  
☞ Minimize costs  
☞ Supports hot, cool, and archive blob tiers  
☞ Provides fault tolerance if a disaster affects the Azure region where the account resides  
How should you complete the command? To answer, select the appropriate options in the answer area. NOTE: Each correct selection is worth one point.  
Hot Area:

### Answer Area

```
az storage account create -g RG1 -n storageaccount1  
--kind
```

BlobStorage  
Storage  
StorageV2

```
--sku
```

Standard\_GRS  
Standard\_LRS  
Standard\_RAGRS  
Premium\_LRS

The Answer is **StorageV2 & Standard GRS**