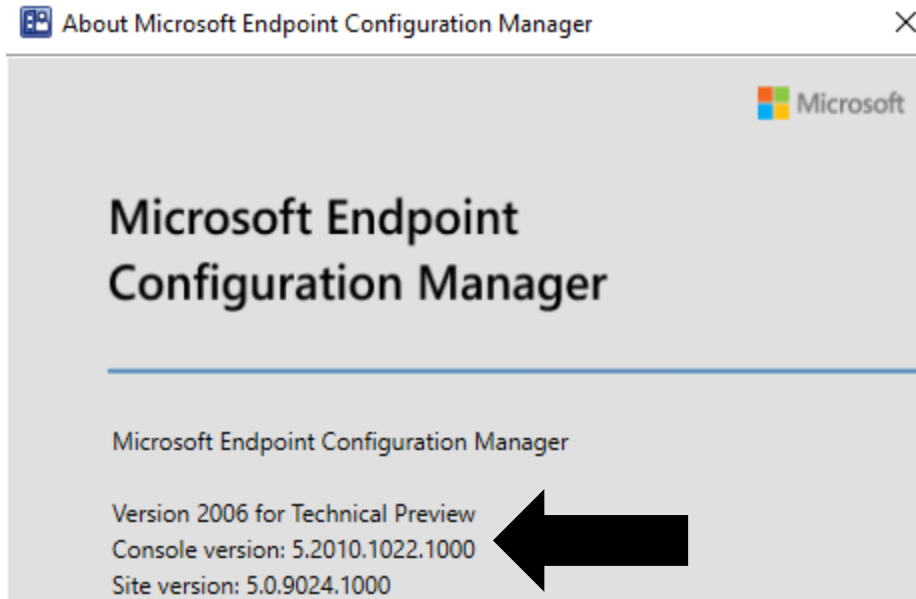


Installing Technical Preview 2007

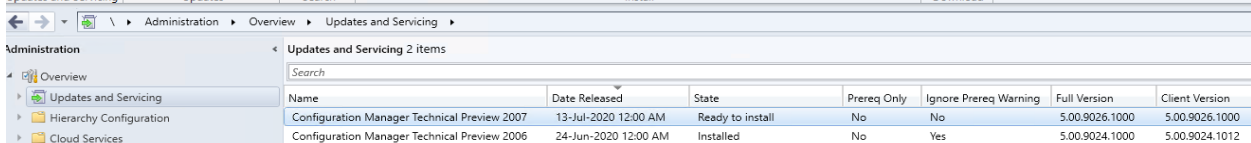
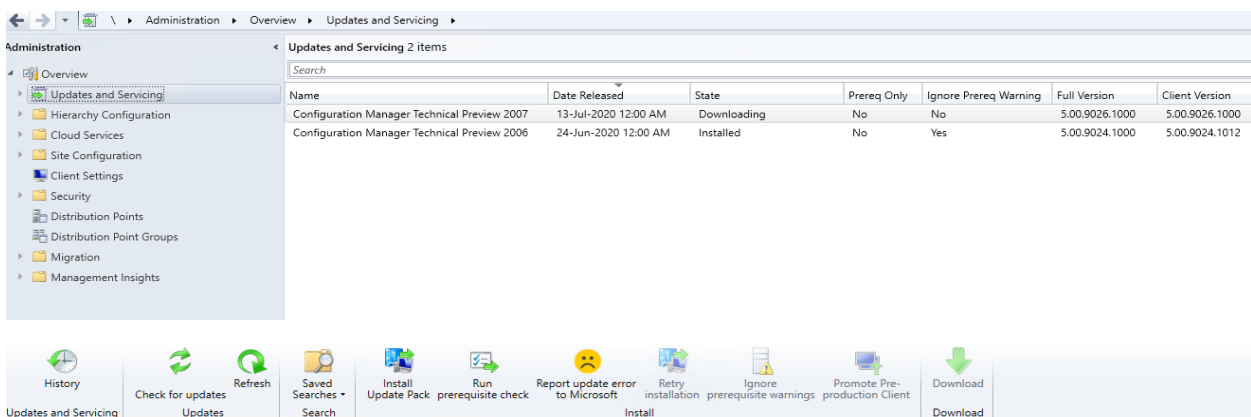
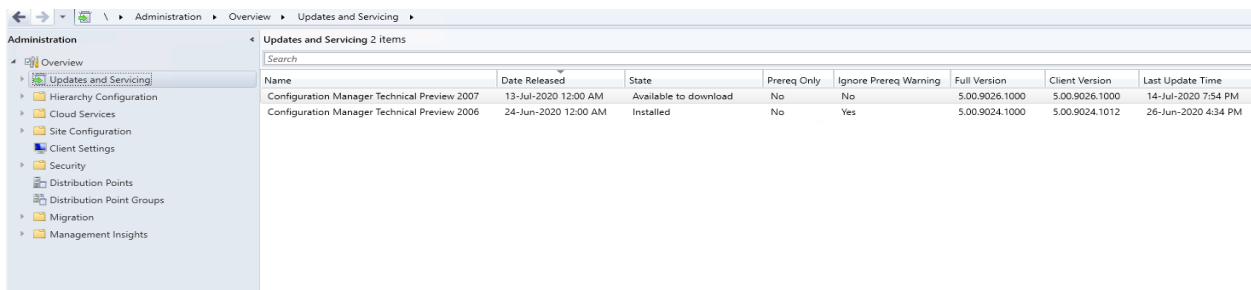
In this post, I will show you how to install TP2007 and explore new features. I am currently running TP2006. Will upgrade to TP2007 within the console.



Visit these links for more info on TP2007

<https://docs.microsoft.com/en-us/mem/configmgr/core/get-started/2020/technical-preview-2007>

<https://techcommunity.microsoft.com/t5/configuration-manager-blog/view-hardware-inventory-in-mem-admin-center-with-configuration/ba-p/1513125>



Configuration Manager Updates Wizard

General

General

Features
Client Update Options
License Terms
Summary
Progress
Completion

Configuration Manager Technical Preview 2007

This wizard helps you configure and install this update.
[Learn more.](#)

This version includes:

- Configuration Manager site server updates
- Configuration Manager console updates
- Configuration Manager client updates
- Fixes for known issues
- New features

Prerequisite warnings:

Ignore any prerequisite check warnings and install this update regardless of missing requirements.

[Privacy Statement](#)

< Previous **Next >** Summary Cancel

Configuration Manager Updates Wizard

Features

General

Features

Client Update Options
License Terms
Summary
Progress
Completion

Features included in update pack

This update pack includes the following features. Select the features you want to enable now. Features you don't enable now can be enabled later from the Updates and Servicing node of the Configuration Manager console.

- Enable third party update support on clients
- Device Health Attestation assessment for compliance policies for conditional access
- Package Conversion Manager
- Windows Defender Exploit Guard policy
- Microsoft Operations Management Suite (OMS) Connector
- Task Sequence Debugger
- Community hub
- Cloud Management Gateway
- Surface Driver Updates
- Windows Hello for Business

Description:

< Previous **Next >** Summary Cancel



Client Update Options

General
Features
Client Update Options
License Terms
Summary
Progress
Completion

Client Update Settings

This update includes an update for the Configuration Manager client. You can upgrade your clients immediately, or validate this client in a pre-production collection before you upgrade all your Configuration Manager clients.

Upgrade without validating

Overwrites your current Configuration Manager client package with the new client update. All new client installations and client upgrades use this new client update.

Validate in pre-production collection

Validate the client update on members of the pre-production collection while you keep your production client package intact. Later, you can overwrite the production package using Client Update Options in the Updates and Servicing node of the Configuration Manager console.

Pre-production collection:

< Previous **Next >** Summary Cancel

Configuration Manager Updates Wizard ✕

License Terms

General
Features
Client Update Options
License Terms
Summary
Progress
Completion

Review and accept the terms for this update pack

You must accept the License Terms and Privacy Statement to continue installation.

[View the License Terms](#)
[View the Privacy Statement](#)

I accept these License Terms and Privacy Statement.

You can add or update your Software Assurance expiration date. This date must be after 01-Oct-2016.

Software Assurance expiration date:

< Previous **Next >** Summary Cancel

[Learn more](#)



Summary

- General
- Features
- Client Update Options
- License Terms
- Summary**
- Progress
- Completion

Confirm the Settings

Details:

Summary of update package installation

Install Update Package Configuration Manager Technical Preview 2007
Prerequisite warnings will be ignored
Test new version of the client in production
Software Assurance expiration date is 2020-12-01.

To change these settings, click Previous. To apply the settings, click Next.

- < Previous
- Next >**
- Summary
- Cancel



Completion


- General
- Features
- Client Update Options
- License Terms
- Summary
- Progress
- Completion**



The Configuration Manager Updates Wizard completed successfully

Details:

Summary of update package installation

 Success: Install Update Package Configuration Manager Technical Preview 2007
Prerequisite warnings will be ignored
Test new version of the client in production
Software Assurance expiration date is 2020-12-01.

To exit the wizard, click Close.

- < Previous
- Next >
- Summary
- Close**

Updates and Servicing 2 items

Name	Date Released	State	Prereq Only	Ignore Prereq Warning	Full Version	Client Version
Configuration Manager Technical Preview 2007	13-Jul-2020 12:00 AM	Installing	No	Yes	5.00.9026.1000	5.00.9026.1000
Configuration Manager Technical Preview 2006	24-Jun-2020 12:00 AM	Installed	No	Yes	5.00.9024.1000	5.00.9024.1012

Updates and Servicing 2 items

Name	Date Released	State	Prereq Only	Ignore Prereq Warning	Full Version	Client Version
Configuration Manager Technical Preview 2007	13-Jul-2020 12:00 AM	Checking prerequisites	No	Yes	5.00.9026.1000	5.00.9026.1000
Configuration Manager Technical Preview 2006	24-Jun-2020 12:00 AM	Installed	No	Yes	5.00.9024.1000	5.00.9024.1012

Updates and Servicing 2 items

Name	Date Released	State	Prereq Only	Ignore Prereq Warning	Full Version	Client Version
Configuration Manager Technical Preview 2007	13-Jul-2020 12:00 AM	Installing	No	Yes	5.00.9026.1000	5.00.9026.1000

Configuration Manager >



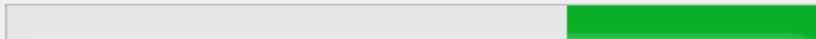
A new version of the console is available (5.2010.1031.1000). Click OK to close the console and install the new version now. Click Cancel to continue working with the old console (5.2010.1022.1000). Working in the old console might corrupt data.

OK

Cancel

Configuration Manager

Downloading files...



Close

Microsoft Endpoint Configuration Manager Console



Please wait while Windows configures Microsoft Endpoint Configuration Manager Console

Gathering required information...

Cancel

Updates and Servicing 1 items

Name	Date Released	State	Prereq Only	Ignore Prereq Warning	Full Version	Client Version	Last Update Time
Configuration Manager Technical Preview 2007	13-Jul-2020 12:00 AM	Installed	No	Yes	5.00.9026.1000	5.00.9026.1000	15-Jul-2020 4:59 AM



Microsoft Endpoint Configuration Manager

Microsoft Endpoint Configuration Manager

Version 2007 for Technical Preview
Console version: 5.2010.1031.1000
Site version: 5.0.9026.1000



General Licensing Diagnostic and Usage Data Client Approval and Conflicting Records Authentication Client Upgrade



Configure settings that control how clients automatically upgrade.

Production client version: 5.00.9026.1000
Last modified: 15-Jul-2020 5:06:01 AM

Upgrade all clients in the hierarchy using production client

Do not upgrade servers

Automatically upgrade clients within days:

7

Pre-production client version: 5.00.9026.1000
Last modified: 15-Jul-2020 5:05:06 AM

Upgrade all clients in the pre-production collection automatically using pre-production client

Pre-production collection :

Browse...

You can promote the pre-production client from Monitoring > Client Status > Pre-production Client Deployment.

Exclude specified clients from upgrade

Exclusion collection :

Browse...

These clients will not be upgraded via any method such as automatic upgrade or software update-based upgrade.

Client deployment status can be monitored in console and using reports.



Applied to Windows operating systems only. You can download clients for additional operating systems from the [Microsoft Download Center](#).

Automatically distribute client installation package to distribution points that are enabled for prestaged content

OK

Cancel

Apply

Microsoft Endpoint Configuration Manager 2007 Tech Preview

Welcome to update 2007 for Configuration Manager Technical Preview. Below you can find information about some of the new features and scenarios that are now available for you to try. You can also view which of the new scenarios you have completed for each feature. [Read more](#) about the latest changes in the Technical Preview build.

Please continue to give us feedback! To report any issues you encounter with the latest functionality included in this Technical Preview, use the [Microsoft Connect](#) website. To request a new feature or enhancement, use the [Configuration Manager UserVoice](#) site.

4 What's New in 2007

Hardware inventory can now be viewed for a tenant attached Configuration Manager device in the admin center

To display hardware inventory launch the admin center preview for a tenant attached device from the Devices node and select 'Resource Explorer'.

Improvements to client data sources dashboard

The client data sources dashboard now offers an expanded selection of filters to view information about where clients get content. These filters include an option to view data from all boundary groups, Internet-based clients, or clients not associated with a boundary group. The dashboard also includes a chart that shows fallback data for content downloads.

NEW FEATURES:

1. **Tenant attach: View hardware inventory in Microsoft Endpoint Manager admin center** - To display hardware inventory launch the admin center preview for a tenant attached device from the Devices node and select 'Resource Explorer'.

View hardware inventory

1. In the Configuration Manager console, go to the **Assets and Compliance** workspace and select the **Devices** node.
2. Right-click on a device that's been uploaded to Microsoft Endpoint Manager.
3. In the right-click menu, select **Start > Admin Center Preview** to open the preview in your browser.

- This launch is a preview experience. The final location will be in Microsoft Endpoint Manager admin center.

4. Select **Resource Explorer** to view the hardware inventory.

- Classes with large amounts of data will only return the first 50 entries.

R61253535 | Resource explorer (preview)

The screenshot shows a web interface for 'Resource explorer (preview)'. On the left is a navigation tree with categories like Device Exchange, Device Info, Device Installed Applications, etc. The 'Disk' category is selected. The main area shows a table with columns: Caption, Description, DeviceID, Index, InterfaceType, and Manufacturer. Two records are displayed:

Caption	Description	DeviceID	Index	InterfaceType	Manufacturer
Virtual HD ATA Device	Disk drive	\\.\PHYSICALDRIVE1	1	IDE	(Standard disk drives)
Virtual HD ATA Device	Disk drive	\\.\PHYSICALDRIVE0	0	IDE	(Standard disk drives)

2. **Improvements to client data sources dashboard** -

The screenshot shows the 'Client Data Sources' dashboard. It includes a 'Report Period' dropdown set to '1 Week'. Below, there are radio buttons for filtering data sources: 'Single boundary group', 'All boundary groups', 'Internet clients', and 'Clients not associated with a boundary group'. The dashboard contains three main sections, each with a message: 'Client Content Sources: This data is not yet available.', 'Content Downloads Using Fallback Source: This data is not yet available.', and 'Top Distributed Content: This data is not yet available.' A navigation pane on the left shows the current path: Monitoring > Overview > Distribution Status > Client Data Sources.

3. Fixed-width font now used in some console areas -

Based on your [UserVoice feedback](#), various areas in the Configuration Manager console now use the fixed-width font Consolas. This font provides consistent spacing and makes it easier to read. In this release, you'll see the Consolas font in the following places:

- Application scripts
- Configuration item scripts
- WMI-based collection membership queries
- CMPivot queries
- Scripts
- Run PowerShell Script
- Run Command Line

4. Manage task sequence policy size -

To further help manage the size of task sequences, starting in this release Configuration Manager restricts the following actions for a task sequence that's greater than 2 MB in size:

- Save changes in the task sequence editor
- Save changes with PowerShell cmdlets
- Import a new task sequence
- Any other change using supported SDK methods

For example, the task sequence editor will display an error if you try to save changes to a large task sequence.

5. Improvements to device timeline in the admin center - We've added additional events to the device timeline in the admin center.

We've added additional events to the device timeline in the admin center. You can now see the following events:

- **Event ID 20227 for VPN failure** from the **RAS client**
- **Event ID 20009 for MP communication roundtrip** from **Microsoft-ConfigMgr**

For more information about the device timeline, see [Configuration Manager technical preview 2005](#).

Collected events for the timeline

Event name	Provider name	Event ID	Technical preview version added
Abnormal Shutdown	Boot	41	2005
Application Crash	Windows Error Reporting	1001	2005
Application Deployment	Microsoft-ConfigMgr	20001	2005
Application Error	Application Error	1000	2005
Application Hang	Application Hang	1002	2005
Boundary Group Change	Microsoft-ConfigMgr	20000	2005
Configuration Manager – Update Installation	Microsoft-ConfigMgr	20002	2005
Firmware version change	Microsoft-ConfigMgr	20003	2005
Initiated Shutdown	Boot	1074	2005
Kernel Crash	Microsoft-Windows-WER-SystemErrorReporting	1001	2005
MP communication roundtrip	Microsoft-ConfigMgr	20009	2007
Unknown Shutdown	Boot	0	2005
VPN Failure	RASClient	20227	2007
Windows Update Agent –	Microsoft-Windows-WindowsUpdateClient	19	2005

This concludes TP2007.

Thanks

Ram Lan
15th July 2020