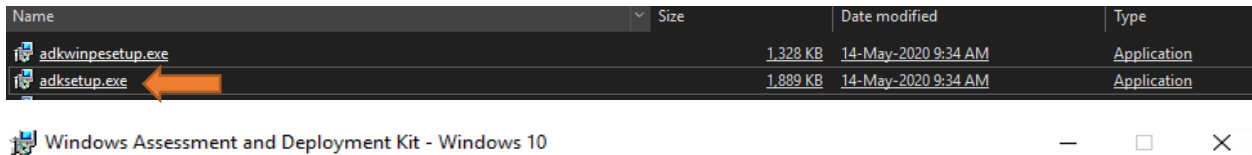


Restart the Server

Now we are ready to download ADK 2004 and complete the install.

Below are the files that, I will be using for above process.



## Specify Location

- Install the Windows Assessment and Deployment Kit - Windows 10 to this computer

Install Path:

C:\Program Files (x86)\Windows Kits\10\

Browse...

- Download the Windows Assessment and Deployment Kit - Windows 10 for installation on a separate computer

Download Path:

C:\Users\Administrator.RAMLAN\Downloads\Windows Kits\10\ADK

Browse...

Estimated disk space required:

1.1 GB

Disk space available:

616.7 GB

Next

Cancel

## Windows Kits Privacy

Windows 10 Kits collect and send anonymous usage data to Microsoft about how our customers use Microsoft programs and about some of the problems they encounter. Microsoft uses this information to improve the products and features. Participation in the program is voluntary, and the end results are software improvements to better meet the needs of our customers. No code or software produced by you will be collected.

[Tell me more about the Windows 10 program.](#)

Send anonymous usage data to Microsoft for the Windows 10 Kits?

- Yes  
 No

\* Participation applies to all Windows Kits installed on this computer.

[Privacy Statement](#)

Back

Next

Cancel

## License Agreement

You must accept the terms of this agreement to continue. If you do not accept the Microsoft Software License Terms, click Decline.

### MICROSOFT SOFTWARE LICENSE TERMS

MICROSOFT WINDOWS ASSESSMENT AND DEPLOYMENT KIT (ADK) FOR WINDOWS 10

MICROSOFT WINDOWS HARDWARE LAB KIT (HLK) FOR WINDOWS 10

MICROSOFT WINDOWS DRIVER KIT (WDK) FOR WINDOWS 10

These license terms are an agreement between you and Microsoft Corporation (or one of its affiliates). They apply to the software named above and any Microsoft services or software updates (except to the extent such services or updates are accompanied by new or additional terms, in which case those different terms apply prospectively and do not alter your or Microsoft's rights relating to pre-updated software or services). IF YOU COMPLY WITH THESE LICENSE TERMS, YOU HAVE THE RIGHTS BELOW. BY USING THE SOFTWARE, YOU ACCEPT THESE TERMS.

#### 1. INSTALLATION AND USE RIGHTS.

##### a. ADK.

- i. You may install and use any number of copies of the software on your devices solely for the purpose of deploying, maintaining, assessing system quality and evaluating

Back

Accept

Decline

## Select the features you want to install

Click a feature name for more information.

- Application Compatibility Tools
- Deployment Tools
- Imaging And Configuration Designer (ICD)
- Configuration Designer
- User State Migration Tool (USMT)
- Volume Activation Management Tool (VAMT)
- Windows Performance Toolkit
- Microsoft User Experience Virtualization (UE-V) Template Generator
- Microsoft Application Virtualization (App-V) Sequencer
- Microsoft Application Virtualization (App-V) Auto Sequencer
- Media eXperience Analyzer
- Windows IP Over USB

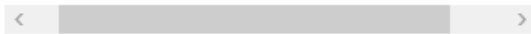
### Microsoft User Experience Virtualization (UE-V) Template Generator

Size: 10.7 MB

Microsoft User Experience Virtualization (UE-V) Template Generator

To synchronize application settings between user computers, Microsoft User Experience Virtualization (UE-V) uses settings location templates. Some settings location templates are included in User Experience Virtualization. You can also create, edit, or validate custom settings location templates by using the UE-V Generator. The UE-V Generator monitors Windows desktop applications to discover and capture the locations where the application stores its settings. The application that is monitored must be a desktop application.

Estimated disk space required: 1.0 GB  
Disk space available: 616.7 GB



Back

Install

Cancel

## Welcome to the Windows Assessment and Deployment Kit - Windows 10!

- Launch the Getting Started Guide

Learn more about Windows Assessment and Deployment Kit - Windows 10 and how it can help you design and deploy Windows, and help you build high quality experiences.

Close

Name	Size	Date modified	Type
adkwinpesetup.exe	1,328 KB	14-May-2020 9:34 AM	Application
adksetup.exe	1,889 KB	14-May-2020 9:34 AM	Application

Windows Assessment and Deployment Kit Windows Preinstallation Environment Add-ons - Windows 10

## Specify Location

- Install the Windows Assessment and Deployment Kit Windows Preinstallation Environment Add-ons - Windows 10 to this computer

Install Path:

C:\Program Files (x86)\Windows Kits\10\ Browse...

\* Windows Kit common installation path used

- Download the Windows Assessment and Deployment Kit Windows Preinstallation Environment Add-ons - Windows 10 for installation on a separate computer

Download Path:

C:\Users\Administrator.RAMLAN\Downloads\Windows Kits\10\ADKWinPEAddons Browse...

Estimated disk space required: 5.5 GB  
Disk space available: 615.6 GB

Next Cancel

Windows Assessment and Deployment Kit Windows Preinstallation Environment Add-ons - Windows 10

## Windows Kits Privacy

Windows 10 Kits collect and send anonymous usage data to Microsoft about how our customers use Microsoft programs and about some of the problems they encounter. Microsoft uses this information to improve the products and features. Participation in the program is voluntary, and the end results are software improvements to better meet the needs of our customers. No code or software produced by you will be collected.

[Tell me more about the Windows 10 program.](#)

**Send anonymous usage data to Microsoft for the Windows 10 Kits?**

- Yes  
 No

\* You are currently participating in the CEIP program. Participation applies to all Windows kits installed on this computer.

[Privacy Statement](#)

Back Next Cancel

## License Agreement

You must accept the terms of this agreement to continue. If you do not accept the Microsoft Software License Terms, click Decline.

**MICROSOFT SOFTWARE LICENSE TERMS**

MICROSOFT WINDOWS ASSESSMENT AND DEPLOYMENT KIT (ADK) FOR WINDOWS 10

MICROSOFT WINDOWS HARDWARE LAB KIT (HLK) FOR WINDOWS 10

MICROSOFT WINDOWS DRIVER KIT (WDK) FOR WINDOWS 10

.

These license terms are an agreement between you and Microsoft Corporation (or one of its affiliates). They apply to the software named above and any Microsoft services or software updates (except to the extent such services or updates are accompanied by new or additional terms, in which case those different terms apply prospectively and do not alter your or Microsoft's rights relating to pre-updated software or services). IF YOU COMPLY WITH THESE LICENSE TERMS, YOU HAVE THE RIGHTS BELOW. BY USING THE SOFTWARE, YOU ACCEPT THESE TERMS.

**1. INSTALLATION AND USE RIGHTS.**

a. **ADK.**

i. You may install and use any number of copies of the software on your devices solely for the purpose of deploying, maintaining, assessing system quality and evaluating

Back

Accept

Decline

## Select the features you want to install

Click a feature name for more information.

 Windows Preinstallation Environment (Windows PE)

### Windows Preinstallation Environment (Windows PE)

Size: 5.5 GB

Minimal operating system designed to prepare a computer for installation and servicing of Windows.

Includes:

- Windows PE (x86)
- Windows PE (AMD64)
- Windows PE (ARM)
- Windows PE (ARM64)

Estimated disk space required: 5.5 GB

Disk space available: 615.6 GB

Back

Install

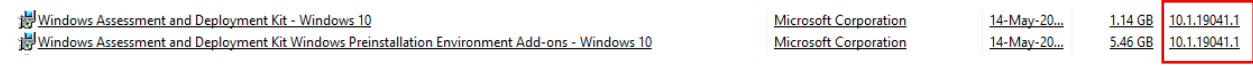
Cancel

## Welcome to the Windows Assessment and Deployment Kit Windows Preinstallation Environment Add-ons - Windows 10!

Close

Restart the server

Check ADK version in Control Panel – Programs and Features



Windows Assessment and Deployment Kit - Windows 10  
Microsoft Corporation 14-May-20... 1.14 GB 10.1.19041.1




Windows Assessment and Deployment Kit Windows Preinstallation Environment Add-ons - Windows 10  
Microsoft Corporation 14-May-20... 5.46 GB 10.1.19041.1

Refresh  
Delete  
Distribute Content  
Update Distribution Points  
Create Prestaged Content File  
Manage Access Accounts

Boot Image  
Deployment

Operating Systems > Boot Images

Boot Images 3 items

Icon	Name	Version	Comment	Image ID
	Boot image (x64)	10.0.18362.1	This boot ima...	TOR00005
	Boot image (x86)	10.0.18362.1	This boot ima...	TOR00002
	MDT 8456 Boot Capture x64	1.0	This boot ima...	TOR0001E



## General

## General

Summary

Progress

Completion

## Update distribution points with this boot image

This wizard updates distribution points with the selected boot image by using the latest Configuration Manager production client components. You can also choose to reload the boot image with the latest version of Windows PE located in the installation directory of the Windows Assessment and Deployment Kit (ADK).

The content of this boot image package will be updated on the Distribution Points where it was previously distributed.

Current Windows ADK version: 10.0.19041.0. Current production client version: 5.00.8968.1012.

Reload this boot image with the current Windows PE version from the Windows ADK

Boot Image: "Boot image (x64)"

Version	Comment	OS Version	Client Version	Package ID
10.0.18362.1	This boot image is create...	10.0.18362.1	5.00.8913.1032	TOR00005

&lt; Previous

Next &gt;

Summary

Cancel



## Summary

General

Summary

Progress

Completion

## Details:

- Update boot image:
- Microsoft Windows PE (x64)
- Windows ADK reload actions:
- Reload using Windows PE from the ADK version 10.0.19041.0
- Update actions:
- Add ConfigMgr binaries using Production Client version 5.00.8968.1012
  - Add custom background
  - Set scratch space
  - Disable Windows PE command line support
  - Add drivers
- Boot image will include these drivers after update:
- Realtek USB FE Family Controller
  - Realtek USB FE Family Controller
  - Intel(R) Ethernet Connection I217-LM
- Optional components:
- Microsoft .NET (WinPE-NetFx)
  - Windows PowerShell (WinPE-PowerShell)
  - Scripting (WinPE-Scripting)
  - Startup (WinPE-SecureStartup)
  - Network (WinPE-WDS-Tools)
  - Scripting (WinPE-WMI)

To perform the actions, click Next.

&lt; Previous

Next &gt;

Summary

Cancel





## Completion

General

Summary

Progress

Completion



The Update Distribution Points Wizard completed successfully

Details:

- ✓ Success: Update boot image:
  - Microsoft Windows PE (x64)
- ✓ Success: Windows ADK reload actions:
  - Reload using Windows PE from the ADK version 10.0.19041.0
- ✓ Success: Update actions:
  - Add ConfigMgr binaries using Production Client version 5.00.8968.1012
  - Add custom background
  - Set scratch space
  - Disable Windows PE command line support
  - Add drivers
- ✓ Success: Boot image will include these drivers after update:
  - Realtek USB FE Family Controller
  - Realtek USB FE Family Controller
  - Intel(R) Ethernet Connection I217-LM

To exit the wizard, click Close.

&lt; Previous

Next &gt;

Summary

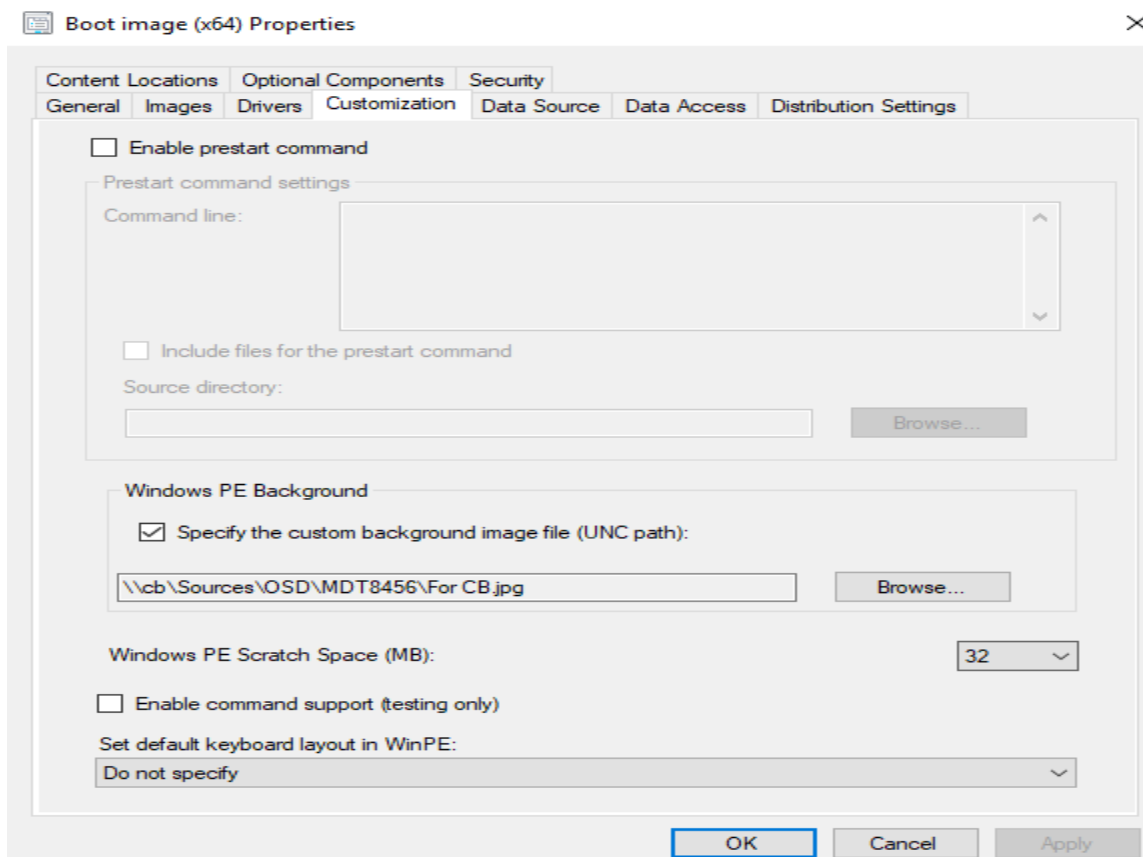
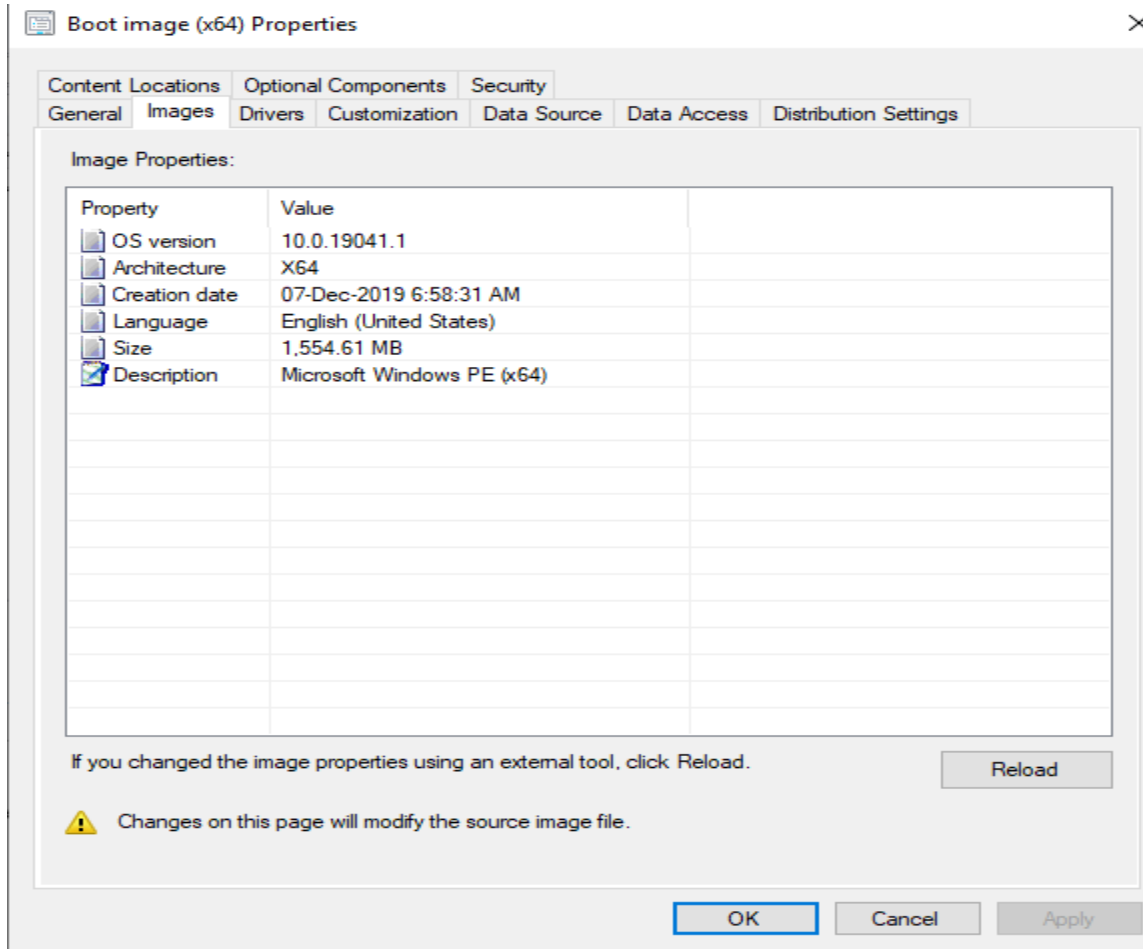
Close

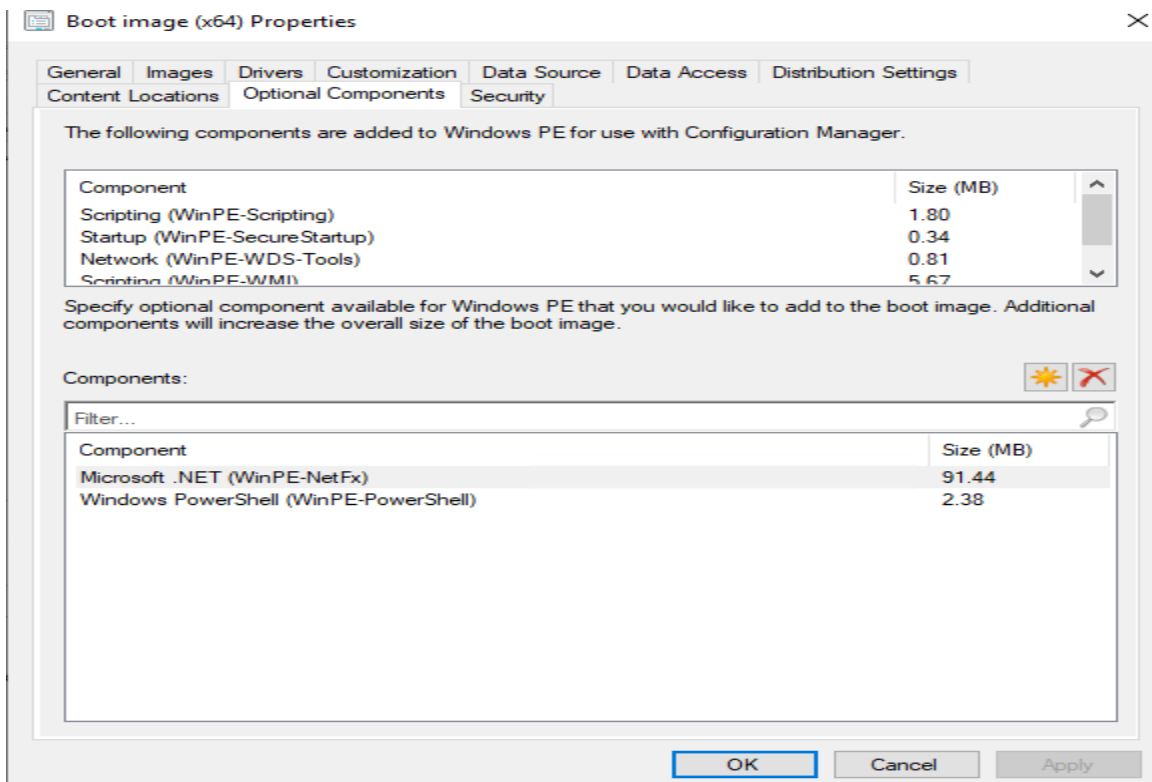
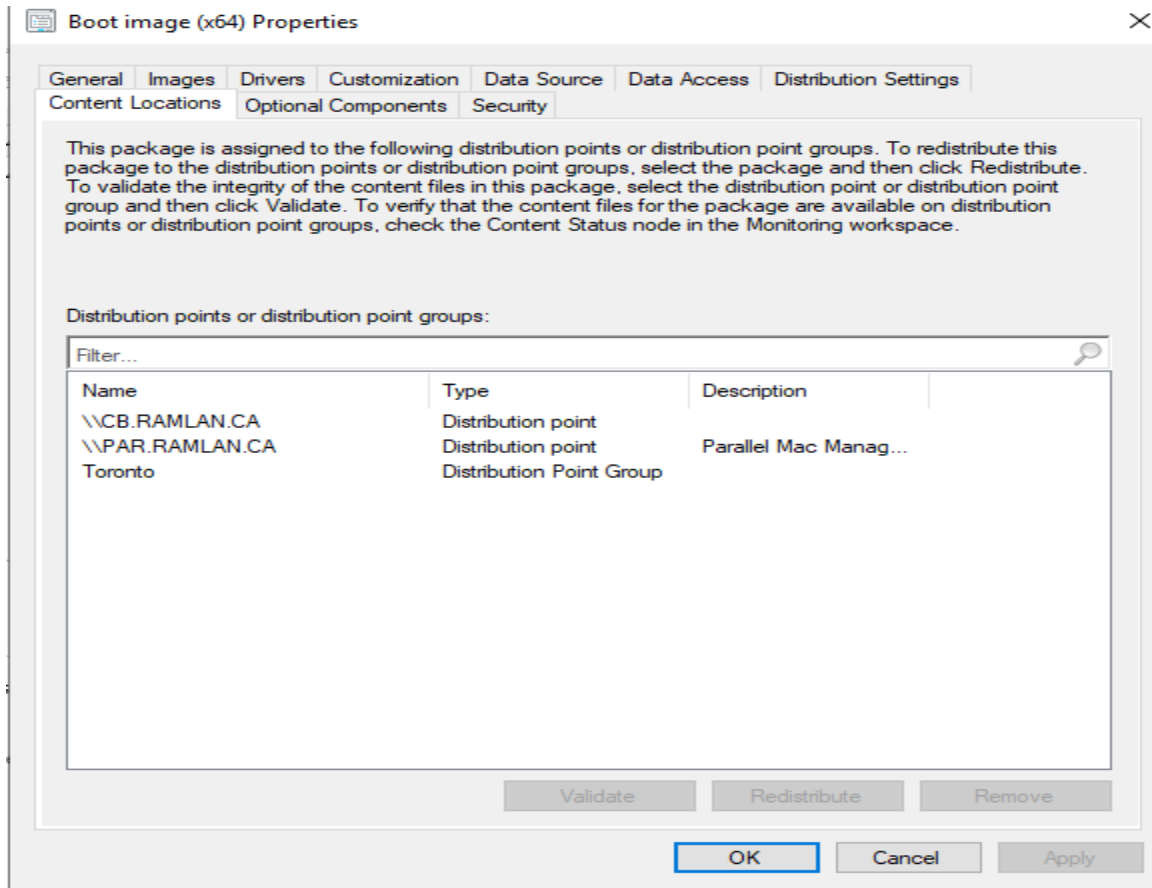
Now check the boot images (x64 and x86) version. If they match ADK version then everything is successful.

Boot Images 3 items

Search

Icon	Name	Version	Comment	Image ID	OS Version	Client Version
	Boot image (x64)	10.0.19041.1	This boot ima...	TOR00005	10.0.19041.1	5.00.8968.1012
	Boot image (x86)	10.0.19041.1	This boot ima...	TOR00002	10.0.19041.1	5.00.8968.1012
	MDT 8456 Boot Capture x64	1.0	This boot ima...	TOR0001E	10.0.19041.1	5.00.8968.1012





This concludes ADK 2004 install.

Thanks

**Ram Lan**  
**14<sup>th</sup> May 2020**

# ADK VERSION HISTORY

## Windows 10 ADK Version History

<b>Windows ADK for Windows 10 v1903</b>	<b>10.1.18362</b>	<b>April, 2019</b>
Windows <b>ADK</b> for Windows 10 v1703	10.1.15063	March, 2017
Windows <b>ADK</b> for Windows 10 v1607	10.1.14393.0	Sept. 2016
Windows <b>ADK</b> for Windows 10 v1511	10.1.10586.0	Oct. 2015
Windows <b>ADK</b> for Windows 10 RTM	10.0.26624.0	July, 2015

ADK version and download link	Description
<a href="#">ADK for Windows 10 Insider Preview</a>	Windows Insiders can download preview versions of the ADK. See <a href="#">what's new for Windows Insiders for Business</a> .
<a href="#">ADK for Windows 10, version 1903</a>	What's new in ADK for Windows 10, version 1903. You can use this version to deploy Windows 10, version 1909 as well.
<a href="#">Windows PE add-on for ADK, version 1903</a>	Windows Preinstallation Environment (PE) for Windows 10, version 1903
<a href="#">ADK for Windows 10, version 1809</a>	What's new in ADK for Windows 10, version 1809
<a href="#">Windows PE add-on for ADK, version 1809</a>	New as of Windows 10, version 1809, Windows Preinstallation Environment (PE) is available separately from the Assessment and Deployment Kit (ADK)
<a href="#">ADK for Windows 10, version 1803</a>	What's new in ADK for Windows 10, version 1803
<a href="#">ADK for Windows 10, version 1709</a>	What's new in ADK for Windows 10, version 1709. For IoT Core for Windows 10, version 1709, also download the <a href="#">IoT Core Add-Ins v4.4</a> .
<a href="#">ADK for Windows 10, version 1703</a>	What's new in ADK for Windows 10, version 1703. For IoT Core for Windows 10, version 1703, also download the <a href="#">IoT Core Add-Ins v3.2</a> .
<a href="#">ADK for Windows 10, version 1607</a>	What's new in ADK for Windows 10, version 1607. For IoT Core for Windows 10, version 1607, also download the <a href="#">IoT Core Add-Ins v2.0 (14393_v1)</a> .

The following table lists the versions of the Windows 10 ADK that you can use with different versions of Configuration Manager.

Windows 10 ADK version	ConfigMgr 1810	ConfigMgr 1902	ConfigMgr 1906	ConfigMgr 1910	ConfigMgr 2002
<b>1709</b> (10.1.16299)					
<b>1803</b> (10.1.17134)					
<b>1809</b> (10.1.17763)					
<b>1903</b> (10.1.18362)					

### Key



**Supported**

This table only shows Windows ADK supportability in relation to the version of Configuration Manager. Microsoft recommends using the Windows ADK that matches the version of Windows you're deploying. Use the latest Windows ADK version when deploying the latest Windows 10 version. The latest Windows ADK version may support deployment of older OS versions, such as Windows 8.1. For more information on Windows ADK component supportability, see [DISM supported platforms](#) and [USMT requirements](#).



**Backward compatible**

This combination isn't tested but should work. We'll document any known issues or caveats.



**Not supported**