

How to upgrade Current Branch 1910 to Current Branch 2002

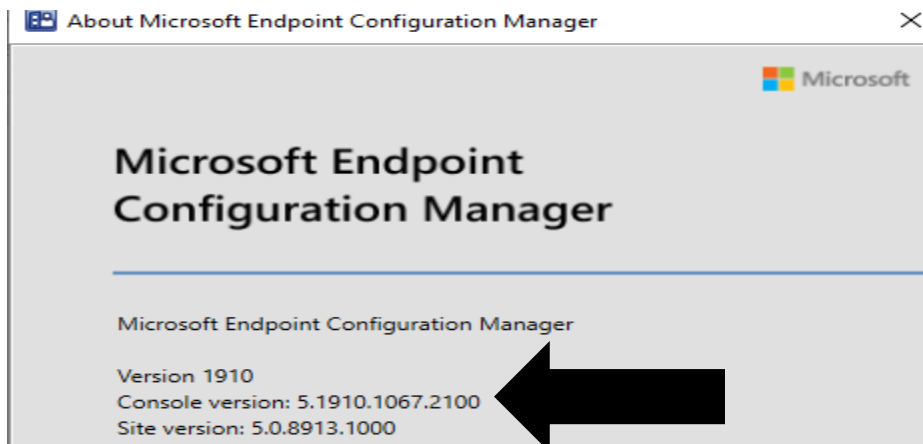
Microsoft released Current Branch 2002 today for fast ring. This update is not available on slow ring. If you want to get ahead and use fast ring to upgrade your production CB1910 – here is script link

<https://download.microsoft.com/download/7/c/4/7c48f2c7-f433-414b-a901-753a61c7956d/EnableEarlyUpdateRing2002.exe>

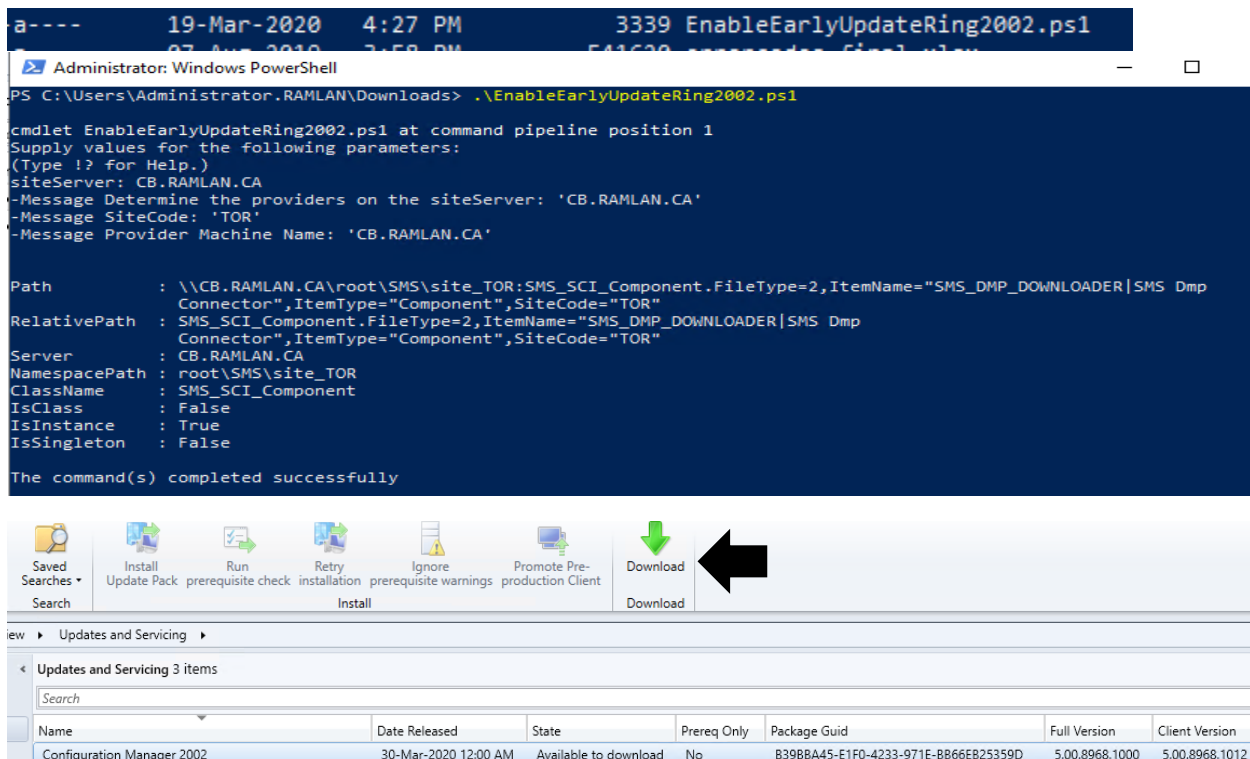
<https://docs.microsoft.com/en-us/configmgr/core/plan-design/changes/whats-new-in-version-2002>

<https://techcommunity.microsoft.com/t5/configuration-manager-blog/update-2002-for-microsoft-endpoint-configuration-manager-current/ba-p/1272670>

My lab is running CB1910. Here is the screen shot.



I have extracted fast ring script – copied to the server and will run as Admin within PowerShell.





Checking for updates. You can click Refresh to update the console to display recently downloaded updates. You can view information about the sync process in the Updates and Servicing Status node in the Monitoring workspace, or view the Dmpdownloader.log

OK

Updates and Servicing 3 items

Search						
Name	Date Released	State	Prereq Only	Package Guid	Full Version	Client Version
Configuration Manager 2002	30-Mar-2020 12:00 AM	Downloading	No	B398BA45-E1F0-4233-971E-BB66EB25359D	5.00.8968.1000	5.00.8968.1012

Configuration Manager Trace Log Tool - [C:\Program Files\Microsoft Configuration Manager\Logs\dmpdownloader.log]

File Tools Window Help



Log Text	Component	Date/Time
File SMSSETUP\BIN\I386\LanguagePack\ALP1028.mst is being extracted	SMS_DMP_DOWNLOADER	02-Apr-2020 8:11:04 AM
File C:\Program Files\Microsoft Configuration Manager\EasySetupPayload\b39bba45-e1f0-4233-971e-bb66eb25359d.cab has been...	SMS_DMP_DOWNLOADER	02-Apr-2020 8:11:04 AM
File SMSSETUP\BIN\I386\LanguagePack\ALP1029.msp is being extracted	SMS_DMP_DOWNLOADER	02-Apr-2020 8:11:04 AM
File C:\Program Files\Microsoft Configuration Manager\EasySetupPayload\b39bba45-e1f0-4233-971e-bb66eb25359d.cab has been...	SMS_DMP_DOWNLOADER	02-Apr-2020 8:11:04 AM
File SMSSETUP\BIN\I386\LanguagePack\ALP1029.mst is being extracted	SMS_DMP_DOWNLOADER	02-Apr-2020 8:11:04 AM
File C:\Program Files\Microsoft Configuration Manager\EasySetupPayload\b39bba45-e1f0-4233-971e-bb66eb25359d.cab has been...	SMS_DMP_DOWNLOADER	02-Apr-2020 8:11:04 AM
File SMSSETUP\BIN\I386\LanguagePack\ALP1031.msp is being extracted	SMS_DMP_DOWNLOADER	02-Apr-2020 8:11:04 AM
File C:\Program Files\Microsoft Configuration Manager\EasySetupPayload\b39bba45-e1f0-4233-971e-bb66eb25359d.cab has been...	SMS_DMP_DOWNLOADER	02-Apr-2020 8:11:04 AM
File SMSSETUP\BIN\I386\LanguagePack\ALP1031.mst is being extracted	SMS_DMP_DOWNLOADER	02-Apr-2020 8:11:04 AM
File C:\Program Files\Microsoft Configuration Manager\EasySetupPayload\b39bba45-e1f0-4233-971e-bb66eb25359d.cab has been...	SMS_DMP_DOWNLOADER	02-Apr-2020 8:11:04 AM
File SMSSETUP\BIN\I386\LanguagePack\ALP1036.msp is being extracted	SMS_DMP_DOWNLOADER	02-Apr-2020 8:11:04 AM
File C:\Program Files\Microsoft Configuration Manager\EasySetupPayload\b39bba45-e1f0-4233-971e-bb66eb25359d.cab has been...	SMS_DMP_DOWNLOADER	02-Apr-2020 8:11:04 AM
File SMSSETUP\BIN\I386\LanguagePack\ALP1036.mst is being extracted	SMS_DMP_DOWNLOADER	02-Apr-2020 8:11:04 AM
File C:\Program Files\Microsoft Configuration Manager\EasySetupPayload\b39bba45-e1f0-4233-971e-bb66eb25359d.cab has been...	SMS_DMP_DOWNLOADER	02-Apr-2020 8:11:04 AM
File SMSSETUP\BIN\I386\LanguagePack\ALP1038.msp is being extracted	SMS_DMP_DOWNLOADER	02-Apr-2020 8:11:04 AM
File C:\Program Files\Microsoft Configuration Manager\EasySetupPayload\b39bba45-e1f0-4233-971e-bb66eb25359d.cab has been...	SMS_DMP_DOWNLOADER	02-Apr-2020 8:11:04 AM
File SMSSETUP\BIN\I386\LanguagePack\ALP1038.mst is being extracted	SMS_DMP_DOWNLOADER	02-Apr-2020 8:11:04 AM
File C:\Program Files\Microsoft Configuration Manager\EasySetupPayload\b39bba45-e1f0-4233-971e-bb66eb25359d.cab has been...	SMS_DMP_DOWNLOADER	02-Apr-2020 8:11:04 AM
File SMSSETUP\BIN\I386\LanguagePack\ALP1040.msp is being extracted	SMS_DMP_DOWNLOADER	02-Apr-2020 8:11:04 AM
File C:\Program Files\Microsoft Configuration Manager\EasySetupPayload\b39bba45-e1f0-4233-971e-bb66eb25359d.cab has been...	SMS_DMP_DOWNLOADER	02-Apr-2020 8:11:04 AM

Date/Time: 02-Apr-2020 8:16:32 AM Component: SMS_DMP_DOWNLOADER

Thread: 8512 (0x2140) Source:

Easy Setup Download interval is: every 1440 minutes

Updates and Servicing 3 items

Search						
Name	Date Released	State	Prereq Only	Package Guid	Full Version	Client Version
Configuration Manager 2002	30-Mar-2020 12:00 AM	Ready to install	No	B398BA45-E1F0-4233-971E-BB66EB25359D	5.00.8968.1000	5.00.8968.1012

Saved Searches
Search

Install Update Pack

Run prerequisite check

Retry installation

Ignore prerequisite warnings

Promote Pre-production Client

Download

w Updates and Servicing

< Updates and Servicing 3 items

Search						
Name	Date Released	State	Prereq Only	Package Guid	Full Version	Client Version
Configuration Manager 2002	30-Mar-2020 12:00 AM	Ready to install	No	B398BA45-E1F0-4233-971E-BB66EB25359D	5.00.8968.1000	5.00.8968.1012



General

General

Features

Client Update Options

License Terms

Summary

Progress

Completion

Configuration Manager 2002

This wizard helps you configure and install this update.

[Learn more.](#)

This version includes:

Configuration Manager site server updates
Configuration Manager console updates
Configuration Manager client updates
Fixes for known issues
New features

Prerequisite warnings:

☒ Ignore any prerequisite check warnings and install this update regardless of missing requirements.

[Privacy Statement](#)

< Previous

Next >

Summary

Cancel



Features

General

Features

Client Update Options

License Terms

Summary

Progress

Completion

Features included in update pack

This update pack includes the following features. Select the features you want to enable now. Features you don't enable now can be enabled later from the Updates and Servicing node of the Configuration Manager console.

- ☒ Task Sequence as an app model deployment type install method
- ☒ Cloud Management Gateway
- ☒ Surface Driver Updates
- ☒ Windows Hello for Business
- ☒ Enable third party update support on clients
- ☒ Device Health Attestation assessment for compliance policies for conditional access
- ☒ Package Conversion Manager
- ☒ Windows Defender Exploit Guard policy
- ☒ Microsoft Operations Management Suite (OMS) Connector
- ☒ Azure Active Directory user group discovery

Description:

An admin is now able to install complex applications using task sequences via the application model in Configuration Manager.

< Previous

Next >

Summary

Cancel



Client Update Options

General

Features

Client Update Options

License Terms

Summary

Progress

Completion

Client Update Settings

This update includes an update for the Configuration Manager client. You can upgrade your clients immediately, or validate this client in a pre-production collection before you upgrade all your Configuration Manager clients.

☒ Upgrade without validating

Overwrites your current Configuration Manager client package with the new client update. All new client installations and client upgrades use this new client update.

☐ Validate in pre-production collection

Validate the client update on members of the pre-production collection while you keep your production client package intact. Later, you can overwrite the production package using Client Update Options in the Updates and Servicing node of the Configuration Manager console.

Pre-production collection:

Browse...

< Previous

Next >

Summary

Cancel



License Terms

General

Features

Client Update Options

License Terms

Summary

Progress

Completion

Review and accept the terms for this update pack

You must accept the License Terms and Privacy Statement to continue installation.

[View the License Terms](#)

[View the Privacy Statement](#)

☒ I accept these License Terms and Privacy Statement.

You can add or update your Software Assurance expiration date. This date must be after 01-Oct-2016.

Software Assurance expiration date:

31-Dec-2020 

[Learn more](#)

< Previous

Next >

Summary

Cancel



Summary

General

Features

Client Update Options

License Terms

Summary

Progress

Completion

Confirm the Settings

Details:

Summary of update package installation

Install Update Package Configuration Manager 2002

Prerequisite warnings will be ignored

Turn on the following features:

- Task Sequence as an app model deployment type install method

Test new version of the client in production

Software Assurance expiration date is 2020-12-31.

To change these settings, click Previous. To apply the settings, click Next.

< Previous

Next >

Summary

Cancel



Completion

General

Features

Client Update Options

License Terms

Summary

Progress

Completion



The Configuration Manager Updates Wizard completed successfully

Details:

Summary of update package installation

✓ Success: Install Update Package Configuration Manager 2002

Prerequisite warnings will be ignored

Turn on the following features:

- Task Sequence as an app model deployment type install method

Test new version of the client in production

Software Assurance expiration date is 2020-12-31.

To exit the wizard, click Close.

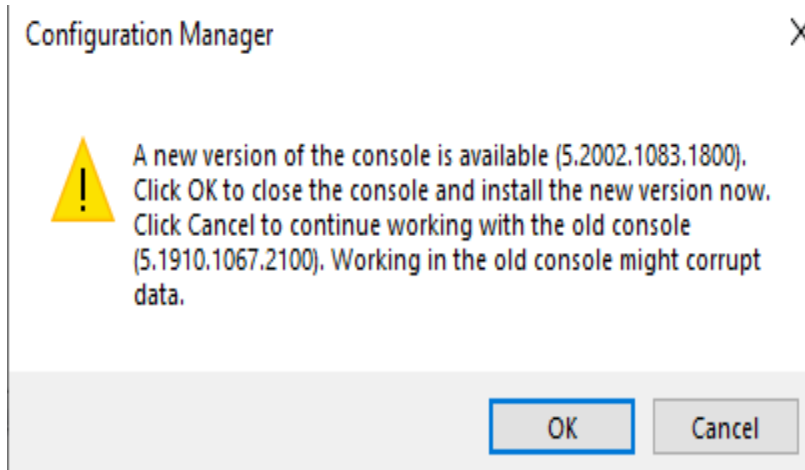
< Previous

Next >

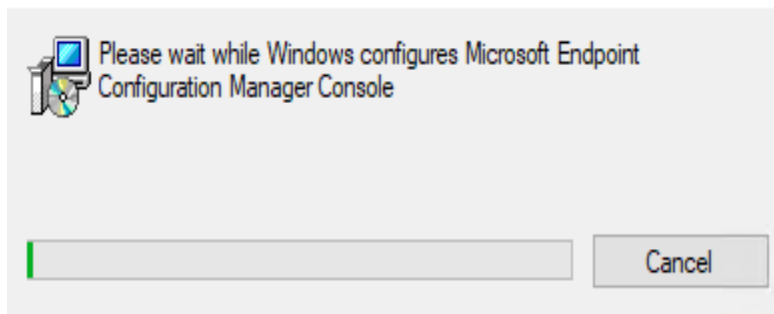
Summary

Close

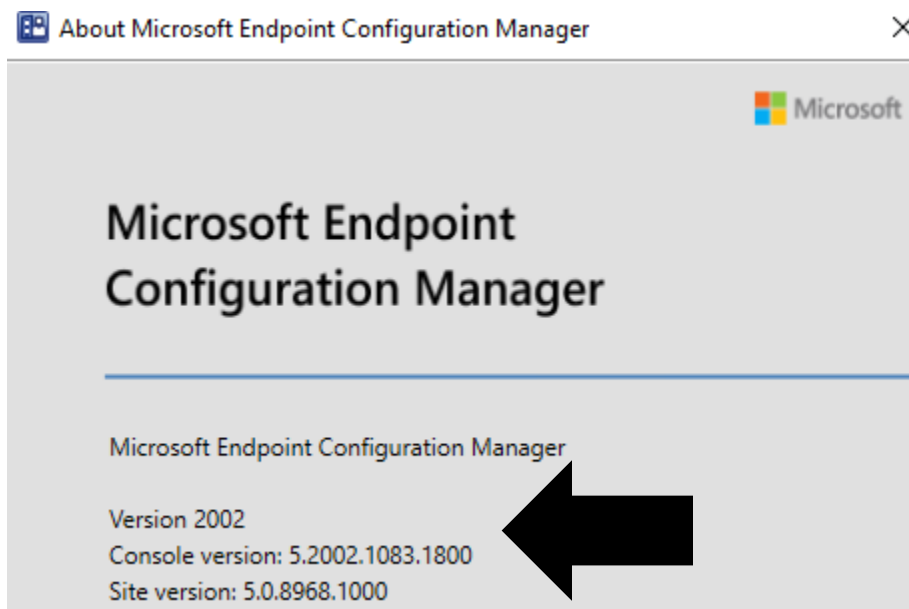
Updates and Servicing 3 items						
Search						
Name	Date Released	State	Prereq Only	Package Guid	Full Version	Client Version
Configuration Manager 2002	30-Mar-2020 12:00 AM	Installing	No	B39BBA45-E1F0-4233-971E-BB66EB25359D	5.00.8968.1000	5.00.8968.1012



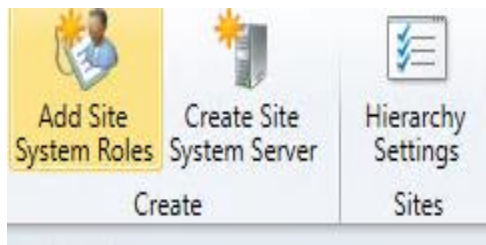
Microsoft Endpoint Configuration Manager Console



Updates and Servicing 1 items						
Search						
Name	Date Released	State	Prereq Only	Package Guid	Full Version	Client Version
Configuration Manager 2002	30-Mar-2020 12:00 AM	Installed	No	B39BBA45-E1F0-4233-971E-BB66EB25359D	5.00.8968.1000	5.00.8968.1012




Now it is time to upgrade all the client from site hierarchy.



Hierarchy Settings Properties [X]

Automatic Mac Client Upgrade

General | Licensing | Diagnostic and Usage Data | Client Approval and Conflicting Records | Authentication | Client Upgrade

 Configure settings that control how clients automatically upgrade.

Production client version: 5.00.8968.1012
Last modified: 02-Apr-2020 9:02:10 AM

☒ Upgrade all clients in the hierarchy using production client
☐ Do not upgrade servers

Automatically upgrade clients within days: 1

Pre-production client version: 5.00.8968.1012
Last modified: 02-Apr-2020 9:01:58 AM

☐ Upgrade all clients in the pre-production collection automatically using pre-production client

Pre-production collection :


You can promote the pre-production client from Monitoring > Client Status > Pre-production Client Deployment.

☐ Exclude specified clients from upgrade

Exclusion collection :

These clients will not be upgraded via any method such as automatic upgrade or software update-based upgrade.

Client deployment status can be monitored in console and using reports.

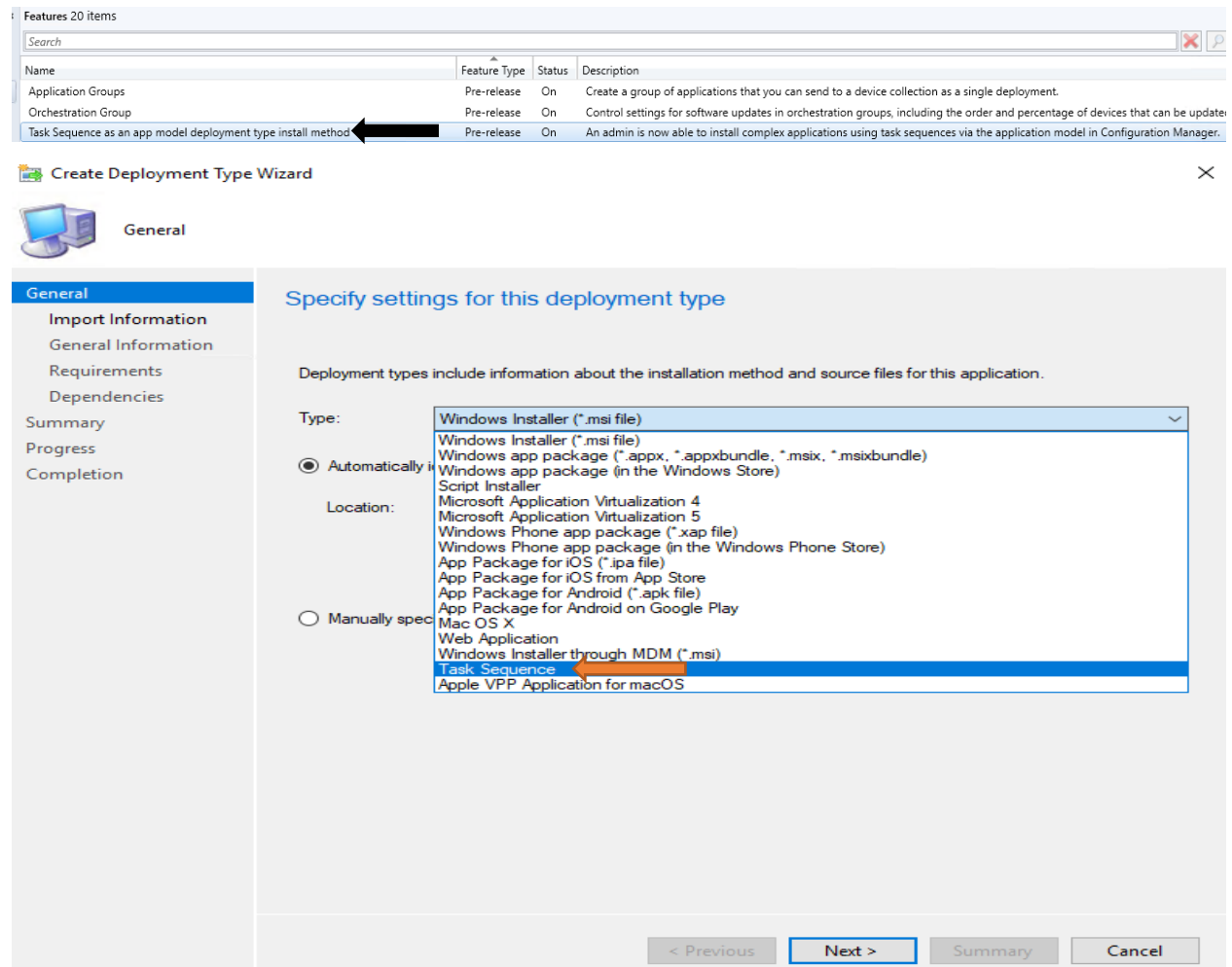
 Applied to Windows operating systems only. You can download clients for additional operating systems from the [Microsoft Download Center](#).

☒ Automatically distribute client installation package to distribution points that are enabled for prestaged content

This concludes the upgrade process (From CB1910 to CB2002). I will explore new features in CB2002.

NEW FEATURES – CB 2002:

Task Sequence as an app – This is a new Pre release feature within CB2002.



Microsoft Endpoint Manager Tenant – With this you can manage On Premise and Cloud in one console. Requires these pre req

- An account that is a *Global Administrator* for signing in when applying this change. For more information, see [Azure Active Directory \(Azure AD\) administrator roles](#).
 - Onboarding creates a third-party app and a first party service principal in your Azure AD tenant.
- An Azure public cloud environment.
- The user account triggering device actions has the following prerequisites:
 - Has been discovered with both [Azure Active Directory user discovery](#) and [Active Directory user discovery](#).
 - Meaning the user account needs to be a synced user object in Azure AD.
 - The **Notify Resource** permission under **Collections** object class in Configuration Manager.
- Enable this [pre-release feature](#) from **Administration > Overview > Updates and Servicing > Features**.

<https://docs.microsoft.com/en-us/configmgr/tenant-attach/device-sync-actions>

https://robertsmit.wordpress.com/2020/04/02/installing-tenant-attach-with-microsoft-endpoint-configuration-manager-update-2002-memcm-memac-configmgr/?utm_content=buffer4d795&utm_medium=social&utm_source=twitter.com&utm_campaign=buffer

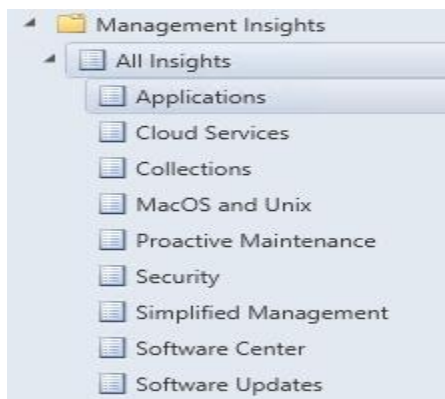
Remove CAS - If your hierarchy consists of a central administration site (CAS) and a single child primary site, you can now remove the CAS. This action simplifies your Configuration Manager infrastructure to a single, standalone primary site. It removes the complexities of site-to-site replication, and focuses your management tasks to the single primary site.

New Management Insight Rules – These are some of the new rules

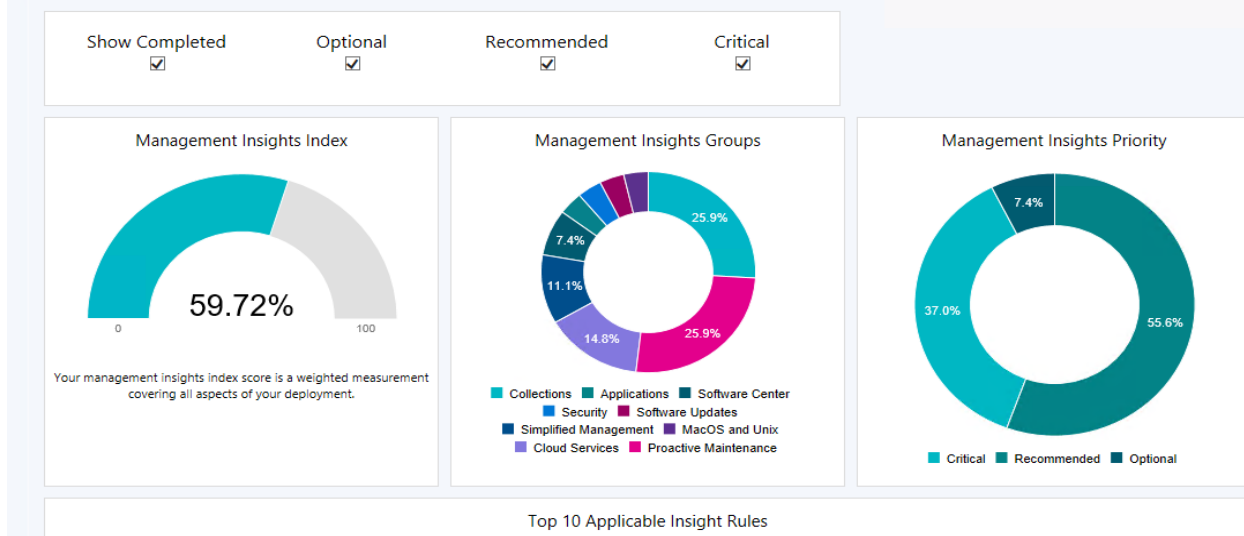
1. Active Directory Security Group Discovery is configured to run too frequently
2. Active Directory System Discovery is configured to run too frequently
3. Active Directory User Discovery is configured to run too frequently
4. Collections limited to All Systems or All Users
5. Heartbeat Discovery is disabled
6. Long running collection queries enabled for incremental updates
7. Reduce the number of applications and packages on distribution points
8. Secondary site installation issues
9. Update all sites to the same version

Two additional rules in the Cloud Services group to help you configure your site for adding secure HTTPS communication:

10. Sites that don't have proper HTTPS configuration
11. Devices not uploaded to Azure AD

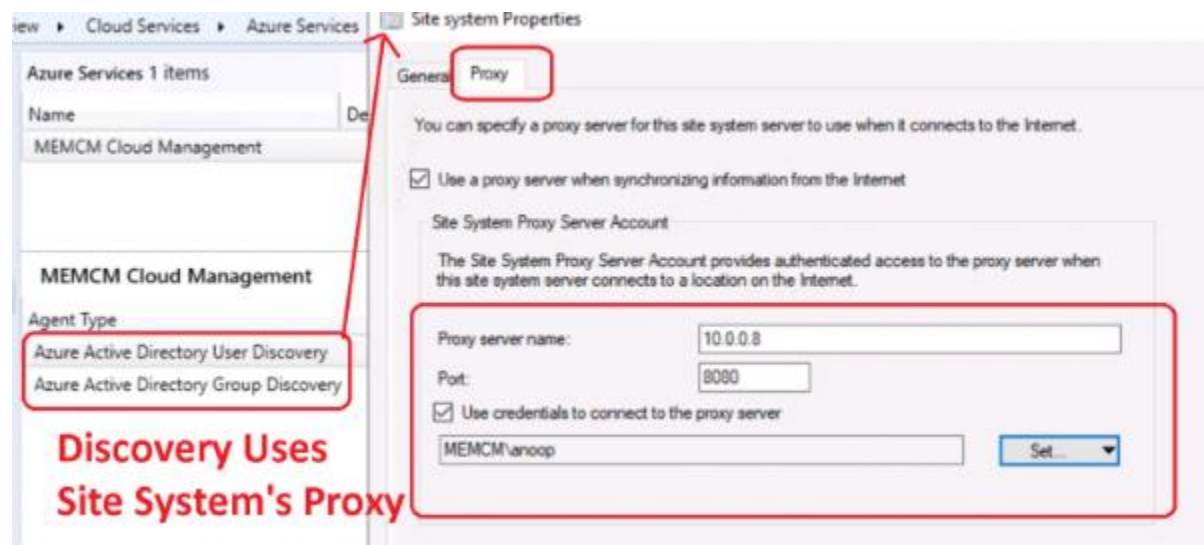


Management Insights



Proxy support for Azure Active Directory discovery and group sync - The site system's proxy settings, including authentication

1. Azure Active Directory (Azure AD) user discovery
2. Azure AD user group discovery
3. Synchronizing collection membership results to Azure Active Directory groups



Cloud Attached Management

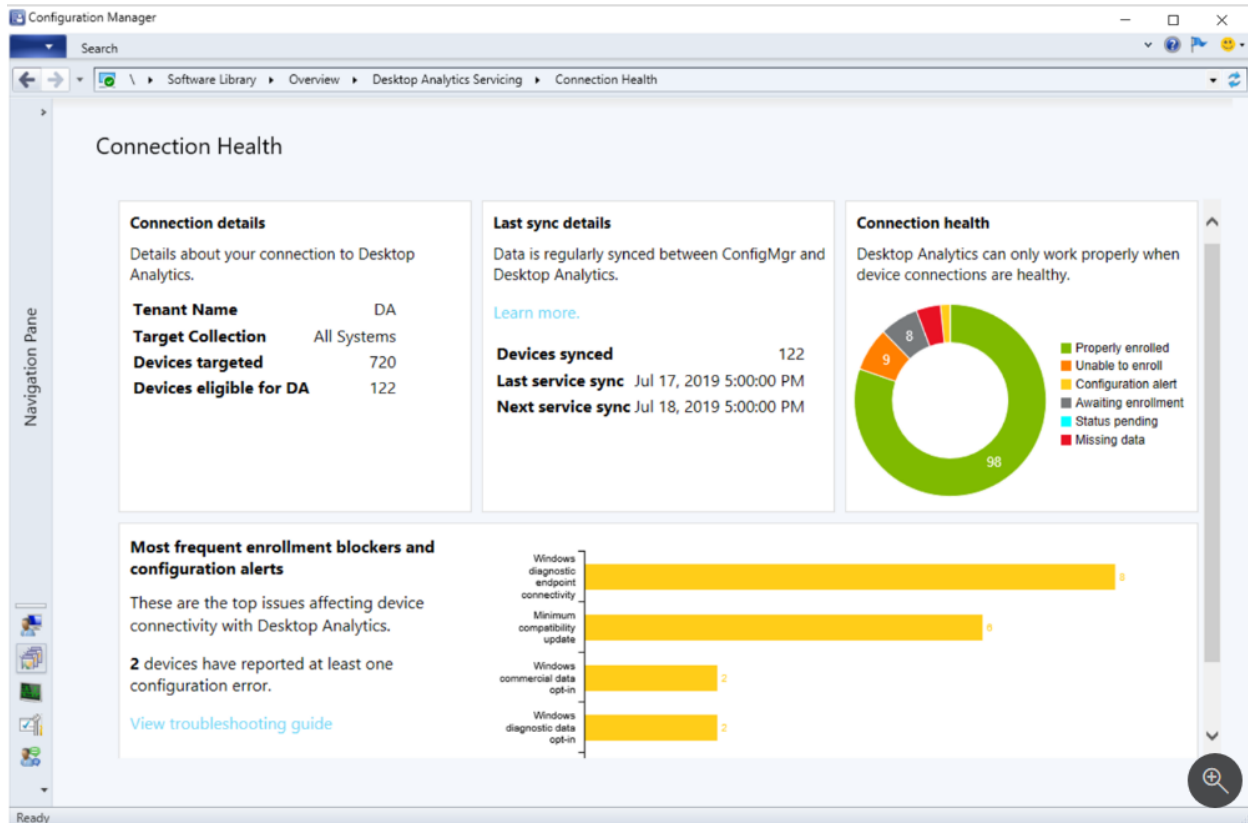
Critical status message shows server connection errors to required endpoints - If the Configuration Manager site server fails to connect to required endpoints for a cloud service, it raises a critical status message ID 11488. When the site server can't connect to the service, the SMS_SERVICE_CONNECTOR component status changes to critical.

Token-based authentication for cloud management gateway - The cloud management gateway (CMG) supports many types of clients, but even with Enhanced HTTP, these clients require a client authentication certificate. This certificate requirement can be challenging to provision on internet-based clients that don't often connect to the internal network, aren't able to join Azure Active Directory (Azure AD), and don't have a method to install a PKI-issued certificate. Starting in version 2002, Configuration Manager extends its device support with the following methods:

- Register on the internal network for a unique token
- Create a bulk registration token for internet-based devices for clients that you can't install and register on the internal network. This allows the client to generate a unique token, which paired with its self-signed certificate, lets it authenticate with the CMG.

Connection Health Dashboard – Desktop Analytics

1. Endpoint connectivity checks: If clients can't reach a required endpoint, you see a configuration alert in the dashboard. Drill down to see the endpoints to which clients can't connect because of proxy configuration issues.
2. Connectivity status: If your clients use a proxy server to access the Desktop Analytics cloud service, Configuration Manager now displays proxy authentication issues from clients. Drill down to see clients that are unable to enroll because of proxy authentication.



Improvements CMPivot

We've made it easier to navigate CMPivot entities. You can now search CMPivot entities. New icons have also been added to easily differentiate the entities and the entity object types.

CMPivot (All Systems)

Entities

Search

- AadStatus
- Administrators
- AppCrash
- AppVClientApplication
- AppVClientPackage
- AutoStartSoftware
- BaseBoard
- Battery
- Bios
- BitLocker
- BitLockerEncryptionDetails
- BitLockerPolicy
- BootConfiguration
- BrowserHelperObject
- BrowserUsage
- ComLog()
- CCMRAX
- CCMRRecentlyUsedApplica
- CCMWebAppInstallInfo
- CDROM
- ClientEvents
- ComputerSystem
- ComputerSystemEx
- ComputerSystemProduct
- ConnectedDevice
- Connection
- DCIMAlertIndicationSetting
- DCIMAMTSettings
- DCIMASFSettings
- DCIMAssetWarrantyInform
- DCIMBattery

Welcome to CMPivot

Overview

CMPivot allows you to quickly assess the state of devices in your environment and take action. When you enter a query, CMPivot will run a query in real - time on all currently connected devices in the selected collection. The data returned can then be filtered, grouped, and refined to answer business questions, troubleshoot issues in your environment, or respond to security threats.

Queries

Queries can be used to search terms, identify trends, analyze patterns, and provide many other insights based on your data.

CMPivot uses a subset of the [Azure Log Analytics](#) data flow model for the tabular expression statement. The typical structure of a tabular expression statement is a composition of client entities and tabular data operators (such as filters and projections). The composition is represented by the pipe character (|), giving the statement a very regular form that visually represents the flow of tabular data from left to right. Each operator accepts a tabular data set "from the pipe", and additional inputs (including other tabular data sets) from the body of the operator, then emits a tabular data set to the next operator that follows:

entity | operator1 | operator2 | ...

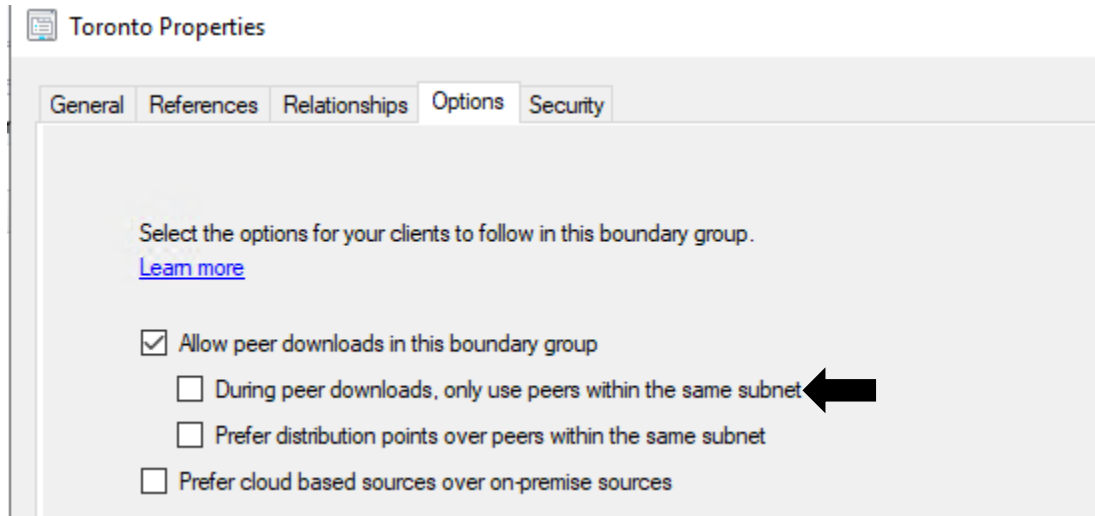
In the following example, the entity is Device (a reference to the current state of all devices in the collection), and the operator is where (which filter out records from its input according to some per-record predicate):

```
Device | where Manufacturer like '%Microsoft%'
```

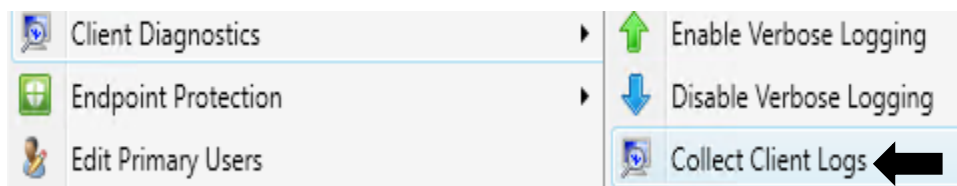
Entities

Exclude certain subnets for peer content download

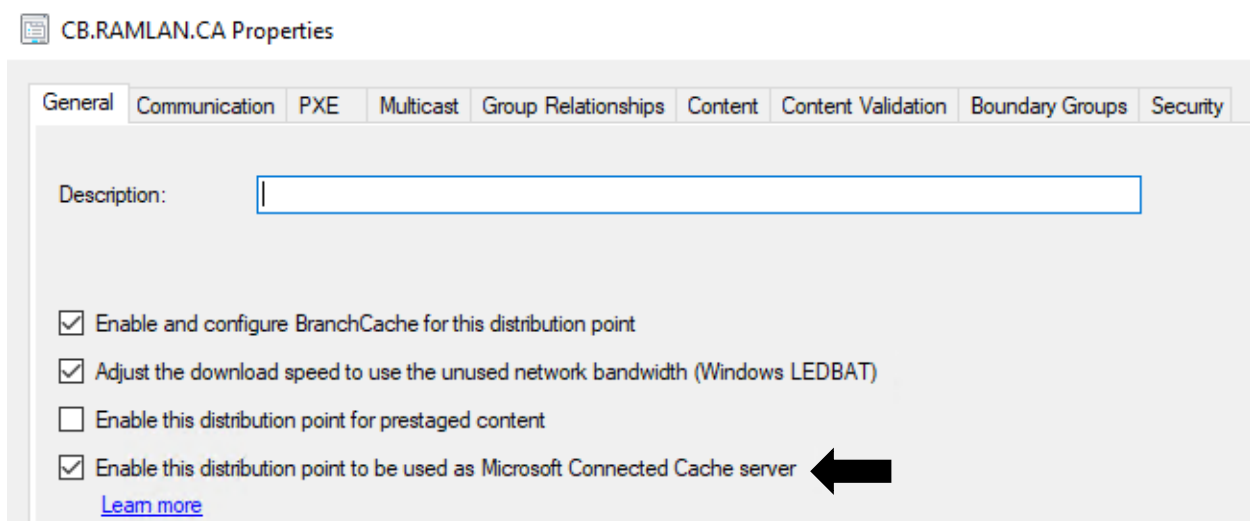
Boundary groups include the following option for peer downloads: During peer downloads, only use peers within the same subnet. If you enable this option, the content location list from the management point only includes peer sources that are in the same subnet and boundary group as the client. Depending on the configuration of your network, you can now exclude certain subnets for matching. For example, you want to include a boundary but exclude a specific VPN subnet.



Client Log Collection - You can now trigger a client device to upload its client logs to the site server by sending a client notification action from the Configuration Manager console.



Proxy support for Connected Cache -If your environment uses an unauthenticated proxy server for internet access, now when you enable a Configuration Manager distribution point for Microsoft Connected Cache, it can communicate through the proxy



Configure the clients to use Wake on LAN -From the central administration site (CAS), in the Devices or Device Collections node, you can now use the client notification action to Wake Up devices. This action was previously only available from a primary site.

The screenshot shows the 'Default Settings' window. On the left is a navigation pane with various settings categories. The main area is titled 'Default Settings' and contains a description: 'Specify settings that apply to all clients in the hierarchy, and can be modified by custom settings.' Below this, it says 'Specify power management settings for client computers.' The 'Device Settings' section is expanded, showing three settings: 'Allow power management of devices' (set to 'Yes'), 'Allow users to exclude their device from power management' (set to 'No'), and 'Allow network wake-up' (set to 'Enable'). A black arrow points to the 'Enable' dropdown for 'Allow network wake-up'. Below the settings, a context menu is open, showing various actions like 'Download Computer Policy', 'Download User Policy', 'Collect Discovery Data', etc. The 'Wake Up' action at the bottom of the menu is highlighted with a black arrow.

Default Settings

Specify settings that apply to all clients in the hierarchy, and can be modified by custom settings.

Specify power management settings for client computers.

Device Settings

- Allow power management of devices: Yes
- Allow users to exclude their device from power management: No
- Allow network wake-up: Enable

Context Menu Actions:

- Client Notification
- Client Diagnostics
- Endpoint Protection
- Edit Primary Users
- Change Ownership
- Delete
- Refresh
- Properties
- LAPS Password
- Parallels Management Tools
- Recast RCT
- Download Computer Policy
- Download User Policy
- Collect Discovery Data
- Collect Software Inventory
- Collect Hardware Inventory
- Evaluate Application Deployments
- Evaluate Software Update Deployments
- Switch to next Software Update Point
- Evaluate Device Health Attestation
- Check Conditional Access Compliance
- Wake Up**

Track configuration item remediations - You can now Track remediation history when supported on your configuration item compliance rules. When this option is enabled, any remediation that occurs on the client for the configuration item generates a state message. The history is stored in the Configuration Manager database.

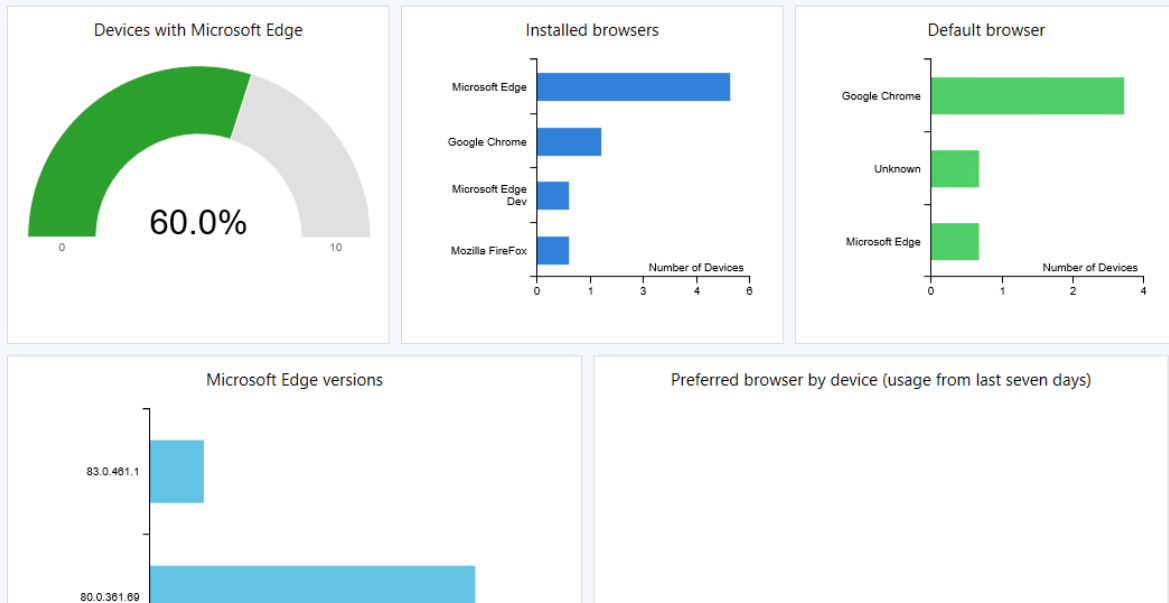
The screenshot shows the 'Check Client Boundary Groups Properties' window. The 'Compliance Rules' tab is selected. It contains a description: 'Use compliance rules to specify the conditions that make a configuration item setting compliant on client devices. The following compliance rules are associated with this configuration item.' Below this, there is a checkbox labeled 'Track remediation history when supported', which is checked. A black arrow points to this checkbox. Below the checkbox is a table with the following data:

Name	Setting Name	CI Name	Condition	Severity	Remediate
Boundary Group	Detect Boundary ...	Check Clien...	Equals Compl...	None	No


Microsoft Edge management dashboard

Microsoft Edge Management

Collection: All Systems Browse...



Improvements to Edge - You can now create a Microsoft Edge application that's set up to receive automatic updates rather than having automatic updates disabled.

 Microsoft Edge Client Installation Wizard



Microsoft Edge Settings

Application Settings

Microsoft Edge Settings

Deployment

Summary

Progress

Completion

Specify settings for Microsoft Edge client

Channel: Stable



Select the version of Microsoft Edge that will be installed on the end user's device.

[Learn More](#)

☒ Latest

☐ Specific Version

80.0.361.109

☐ Allow Microsoft Edge to automatically update the version of the client on the end user's device



Improvements to Check Readiness task sequence step

Select requirements that must be ensured for this step to succeed:

- ☒ Minimum memory (MB): 2048
- ☒ Minimum processor speed (MHz): 1024
- ☒ Minimum free disk space (MB): 25600
- ☒ Current OS to be refreshed is: CLIENT
- ☐ Architecture of current OS: 64-bit
- ☐ Minimum OS version: _____
- ☐ Maximum OS version: _____
- ☐ Minimum client version: _____
- ☐ Language of current OS: _____
- ☐ AC power plugged in
- ☐ Network adapter connected
- ☐ Network adapter is not wireless

Do not specify

Boundary Groups – Device – You can see it in Device collection

Devices 23 items

Icon	Name	Client	Primary User(s)	Currently Logged on User	Site Code	Client Activity	Boundary Group(s)
	192.168.0.1	No					
	cat	No					
	CB	Yes		RAMLAN\Administrator	TOR	Active	Toronto
	DC	Yes		RAMLAN\Administrator	TOR	Active	Toronto
	DPM	No		RAMLAN\Administrator			Toronto
	EX2019	Yes		RAMLAN\Administrator	TOR	Active	Toronto

Improvements to task sequence progress

1. You can enable it to show the current step number, total number of steps, and percent completion
2. Increased the width of the window to give you more space to better show the organization name in a single line

Improvements to OS deployment


1. The task sequence environment includes a new read-only variable, `_TSSecureBoot`. Use this variable to determine the state of secure boot on a UEFI-enabled device. For more information, see `_TSSecureBoot`.
2. Set task sequence variables to configure the user context for the Run Command Line and Run PowerShell Script steps. For more information, see `SMSTSRunCommandLineAsUser` and `SMSTSRunPowerShellAsUser`.
3. On the Run PowerShell Script step, you can now set the Parameters property to a variable. For more information, see Run PowerShell Script.
4. The Configuration Manager PXE responder now sends status messages to the site server. This change makes it easier to troubleshoot OS deployments that use this service.

Orchestration groups

Create an orchestration group to better control the deployment of software updates to devices. Many server administrators need to carefully manage updates for specific workloads, and automate behaviors in between.

An orchestration group gives you the flexibility to update devices based on a percentage, a specific number, or an explicit order. You can also run a PowerShell script before and after the devices run the update deployment.

Members of an orchestration group can be any Configuration Manager client, not just servers. The orchestration group rules apply to the devices for all software update deployments to any collection that contains an orchestration group member. Other deployment behaviors still apply. For example, maintenance windows and deployment schedules.

 Create Orchestration Group Wizard

×



General

General

Member Selection

Rules Selection

Pre-Script

Post-Script

Summary

Progress

Completion

Specify general information for this Orchestration Group

Create an Orchestration Group to coordinate operations to optimize downtime for your group.

Name:

Windows Server

Description:

Orchestration Group timeout (in minutes):

720

Orchestration Group Member timeout (in minutes):

60

< Previous

Next >

Summary

Cancel

Select Resources to Orchestration Group

Name string contains:

Resource type:

System Resource

Search in collection:

<All Collections>

Browse...

Advanced >>

Search

Search results:

Name	Resource Type	Domain	Site Code
cat	System Resource	RAMLAN	TOR
hsi	System Resource	RAMLAN	TOR
MBP	System Resource		TOR
moj	System Resource	RAMLAN	TOR
TP1	System Resource	RAMLAN	TOR
WIN7	System Resource	RAMLAN	TOR
WIN8	System Resource	RAMLAN	TOR

Add

Remove

Selected resources:

Name	Resource Type	Domain	Site Code
DC	System Resource	RAMLAN	TOR
EX2019	System Resource	RAMLAN	TOR
CB	System Resource	RAMLAN	TOR
DPM	System Resource	RAMLAN	TOR
OFFICESERVER	System Resource	RAMLAN	TOR
OM	System Resource	RAMLAN	TOR
ORCH	System Resource	RAMLAN	TOR
PAR	System Resource	RAMLAN	TOR
SFB	System Resource	RAMLAN	TOR
SM1	System Resource	RAMLAN	TOR
SM2	System Resource	RAMLAN	TOR
VMM	System Resource	RAMLAN	TOR

OK

Cancel

Create Orchestration Group Wizard

Member Selection

General

Member Selection

Rules Selection

Pre-Script

Post-Script

Summary

Progress

Completion

Select members for this group

Site Code:

TOR - CB.RAMLAN.CA - Toronto Headquarters Site

Members:

Resource ID	Resource Name
16777221	DC
16777222	EX2019
16777220	CB
16777230	DPM
16777224	OFFICESERV...

Add

Remove

< Previous

Next >

Summary

Cancel



Rules Selection

General
Member Selection
Rules Selection
Pre-Script
Post-Script
Summary
Progress
Completion

Orchestration Group Rules Selection Page

☐ Allow a percentage of the machines to be updated at the same time.

1

☒ Allow a number of the machines to be updated at the same time.

1

☐ Specify the maintenance sequence

Resource ID	Resource Name
16777221	DC
16777222	EX2019
16777220	CB
16777230	DPM
16777224	OFFICESERV...
16777226	OM
16777234	ORCH

Move up

Move down

Move Top

Move Bottom

< Previous

Next >

Summary

Cancel



Summary

General
Member Selection
Rules Selection
Pre-Script
Post-Script
Summary
Progress
Completion

Confirm the settings

Details:

- General Summary
- Name: Windows Server
 - Description:
 - Orchestration Group Timeout: 720
 - Orchestration Group Member Timeout: 60
- Site Summary
- Site Code: TOR
- Orchestration Summary
- Type: Count

To change these settings, click Previous. To apply the settings, click Next.

< Previous

Next >

Summary

Cancel



Completion

General
Member Selection
Rules Selection
Pre-Script
Post-Script
Summary
Progress
Completion



The Create Orchestration Group Wizard completed successfully

Details:

General Summary

- Name: Windows Server
- Description:
- Orchestration Group Timeout: 720
- Orchestration Group Member Timeout: 60

Site Summary

- Site Code: TOR

Orchestration Summary

- Type: Count

To exit the wizard, click Close.

< Previous

Next >

Summary

Close

Assets and Compliance

Orchestration Group 1 items

Orchestration Name	Site Code	Orchestration Type	Orchestration Value	Orchestration State	Orchestration Start Time	Total Member Count	Failed Member Count
Windows Server	TOR	Number	1	Idle		12	0

Start Orchestration Group



This action will Start Orchestration Group. Do you want to continue?

Yes

No

Configuration Manager Trace Log Tool - [C:\Program Files\Microsoft Configuration Manager\Logs\SMS_OrchestrationGroup.log]			
File Tools Window Help			
Log Text	Component	Date/Time	Thread
Checking member states for Orchestration Group 16777216	SMS_BUSINESS_APP_PROCESS_MANAGER	02-Apr-2020 6:00:33 PM	326 (0x146)
Orchestration Group evaluation process starts	SMS_BUSINESS_APP_PROCESS_MANAGER	02-Apr-2020 6:00:33 PM	331 (0x14B)
Checking group state for Orchestration Group 16777216	SMS_BUSINESS_APP_PROCESS_MANAGER	02-Apr-2020 6:00:33 PM	326 (0x146)
Gets orchestration group information from database	SMS_BUSINESS_APP_PROCESS_MANAGER	02-Apr-2020 6:00:33 PM	327 (0x147)
Orchestration Group cleaning process starts.	SMS_BUSINESS_APP_PROCESS_MANAGER	02-Apr-2020 6:00:33 PM	327 (0x147)
Checking member states for Orchestration Group 16777216	SMS_BUSINESS_APP_PROCESS_MANAGER	02-Apr-2020 6:00:33 PM	327 (0x147)
Orchestration Group 16777216 is still in progress	SMS_BUSINESS_APP_PROCESS_MANAGER	02-Apr-2020 6:00:33 PM	326 (0x146)
Orchestration Group node selection process starts.	SMS_BUSINESS_APP_PROCESS_MANAGER	02-Apr-2020 6:00:33 PM	326 (0x146)
Checking group state for Orchestration Group 16777216	SMS_BUSINESS_APP_PROCESS_MANAGER	02-Apr-2020 6:00:33 PM	327 (0x147)
Checking group state for Orchestration Group 16777216	SMS_BUSINESS_APP_PROCESS_MANAGER	02-Apr-2020 6:00:33 PM	333 (0x14D)
Gets orchestration group information from database	SMS_BUSINESS_APP_PROCESS_MANAGER	02-Apr-2020 6:00:33 PM	331 (0x14B)
Orchestration Group 16777216 is still in progress	SMS_BUSINESS_APP_PROCESS_MANAGER	02-Apr-2020 6:00:33 PM	327 (0x147)
Orchestration Group node selection process starts.	SMS_BUSINESS_APP_PROCESS_MANAGER	02-Apr-2020 6:00:33 PM	327 (0x147)
Orchestration Group cleaning process starts.	SMS_BUSINESS_APP_PROCESS_MANAGER	02-Apr-2020 6:00:33 PM	331 (0x14B)
Checking member states for Orchestration Group 16777216	SMS_BUSINESS_APP_PROCESS_MANAGER	02-Apr-2020 6:00:33 PM	331 (0x14B)
Orchestration Group 16777216 is still in progress	SMS_BUSINESS_APP_PROCESS_MANAGER	02-Apr-2020 6:00:33 PM	333 (0x14D)
Orchestration Group node selection process starts.	SMS_BUSINESS_APP_PROCESS_MANAGER	02-Apr-2020 6:00:33 PM	333 (0x14D)
Checking group state for Orchestration Group 16777216	SMS_BUSINESS_APP_PROCESS_MANAGER	02-Apr-2020 6:00:33 PM	331 (0x14B)
Orchestration Group 16777216 is still in progress	SMS_BUSINESS_APP_PROCESS_MANAGER	02-Apr-2020 6:00:33 PM	331 (0x14B)
Orchestration Group node selection process starts.	SMS_BUSINESS_APP_PROCESS_MANAGER	02-Apr-2020 6:00:33 PM	331 (0x14B)
Date/Time: 02-Apr-2020 6:00:33 PM Component: SMS_BUSINESS_APP_PROCESS_MANAGER Thread: 331 (0x14B) Source: Orchestration Group node selection process starts.			

SSU

Configuration Manager now detects if a servicing stack update (SSU) is part of an installation for multiple updates. When an SSU is detected, it's installed first. After install of the SSU, a software update evaluation cycle runs to install the remaining updates. This change allows a dependent cumulative update to be installed after the servicing stack update. The device doesn't need to restart between installs, and you don't need to create an additional maintenance window. SSUs are installed first only for non-user initiated installs. For instance, if a user initiates an installation for multiple updates from Software Center, the SSU might not be installed first.

Office 365 updates

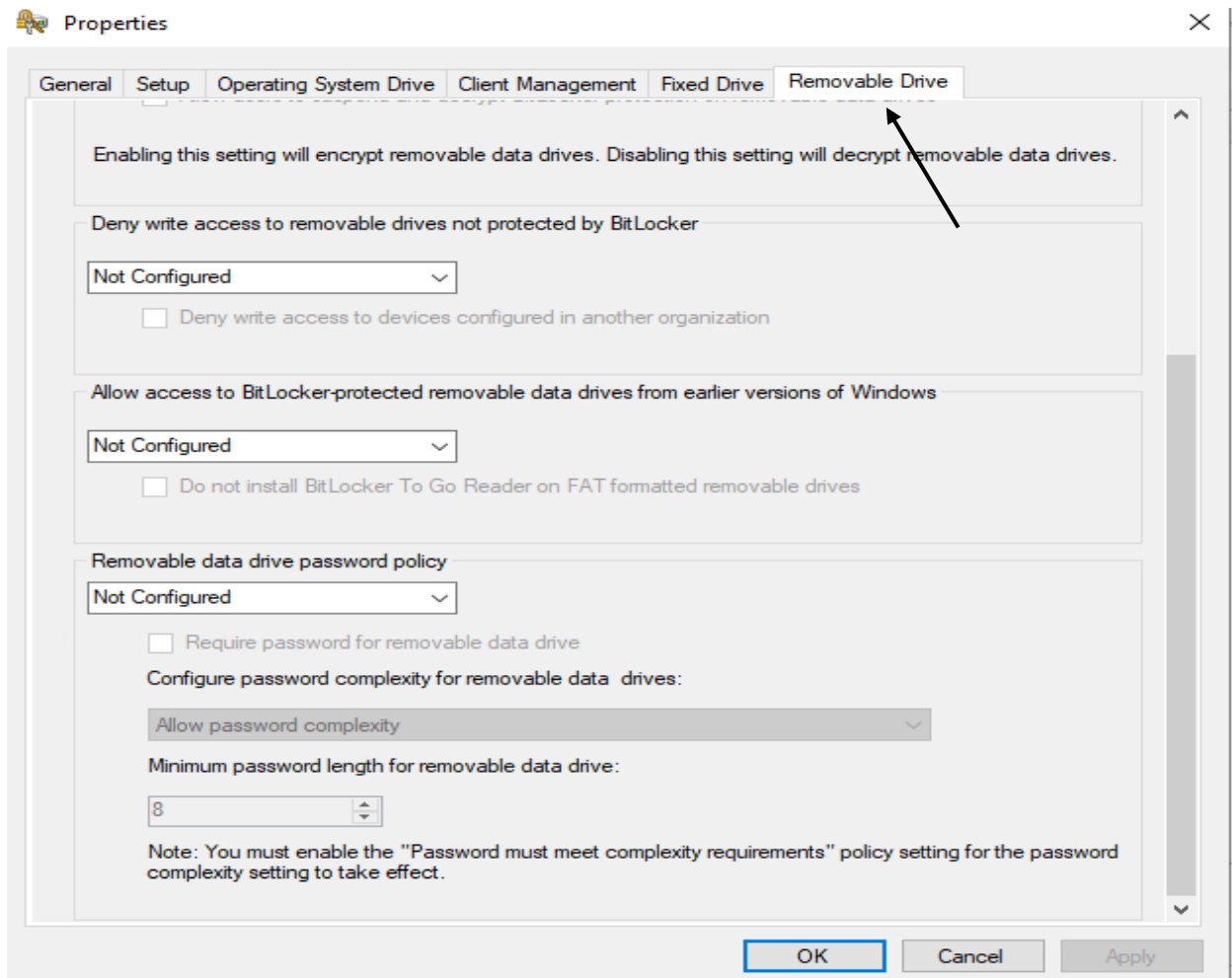
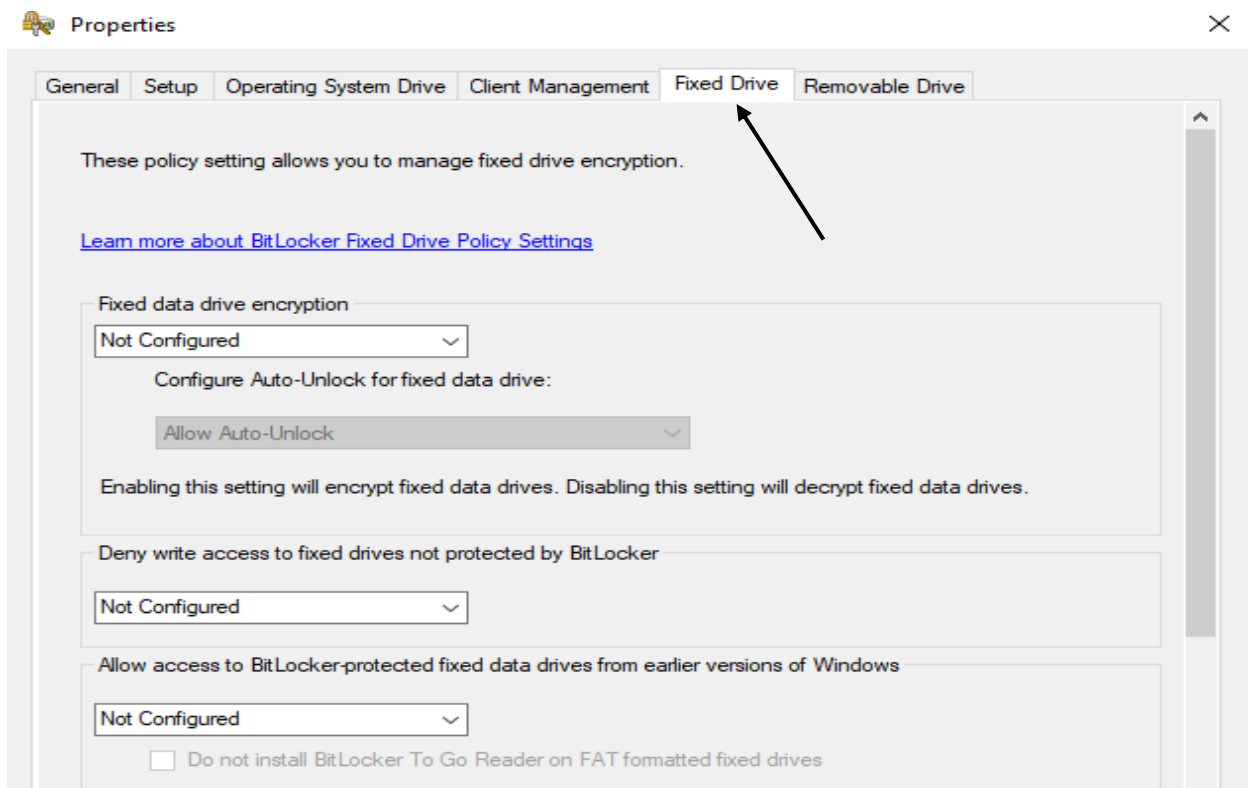
You can use a new tool to import Office 365 updates from an internet-connected WSUS server into a disconnected Configuration Manager environment. Previously when you exported and imported metadata for software updated in disconnected environments, you were unable to deploy Office 365 updates. Office 365 updates require additional metadata downloaded from an Office API and the Office CDN, which isn't possible for disconnected environments.

Improvements to BitLocker management

The BitLocker management policy now includes additional settings, including policies for fixed and removable drives.

In Configuration Manager current branch version 1910, to integrate the BitLocker recovery service you had to HTTPS-enable a management point. The HTTPS connection is necessary to encrypt the recovery keys across the network from the Configuration Manager client to the management point. Configuring the management point and all clients for HTTPS can be challenging for many customers.

Starting in this version, the HTTPS requirement is for the IIS website that hosts the recovery service, not the entire management point role. This change relaxes the certificate requirements, and still encrypts the recovery keys in transit.



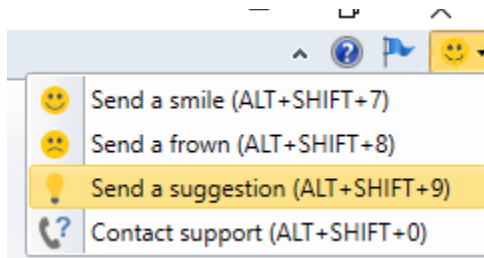
Integrate with Power BI Report Server

You can now integrate Power BI Report Server with Configuration Manager reporting. This integration gives you modern visualization and better performance. It adds console support for Power BI reports similar to what already exists with SQL Server Reporting Services.

I have already setup BI Server so, I cannot provide details with SSRS configuration. You can refer to this [blog post](http://www.infotechram.com/index.php/2020/03/22/installing-power-bi-server-on-current-branch-1910/).

<http://www.infotechram.com/index.php/2020/03/22/installing-power-bi-server-on-current-branch-1910/>

Send a smile improvement



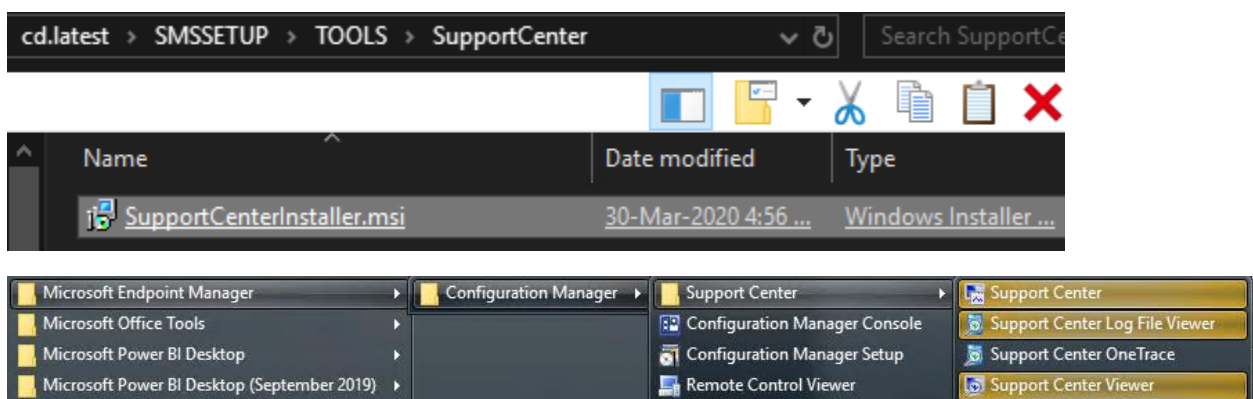
Search all subfolders for configuration items and configuration baselines

A screenshot of the Configuration Manager console. The breadcrumb path is 'Overview > Compliance Settings > Configuration Items'. Below the breadcrumb, it says 'Configuration Items 14 items'. There is a search bar. Below the search bar is a table with the following columns: Icon, Name, Type, Device Type, Revision, Child, Relationships, and User Setting. The table contains one row with the following data: Icon (folder icon), Name (Check Client Boundary Groups), Type (Operating System), Device Type (Windows), Revision (1), Child (No), Relationships (Yes), and User Setting (No).

Icon	Name	Type	Device Type	Revision	Child	Relationships	User Setting
	Check Client Boundary Groups	Operating System	Windows	1	No	Yes	No

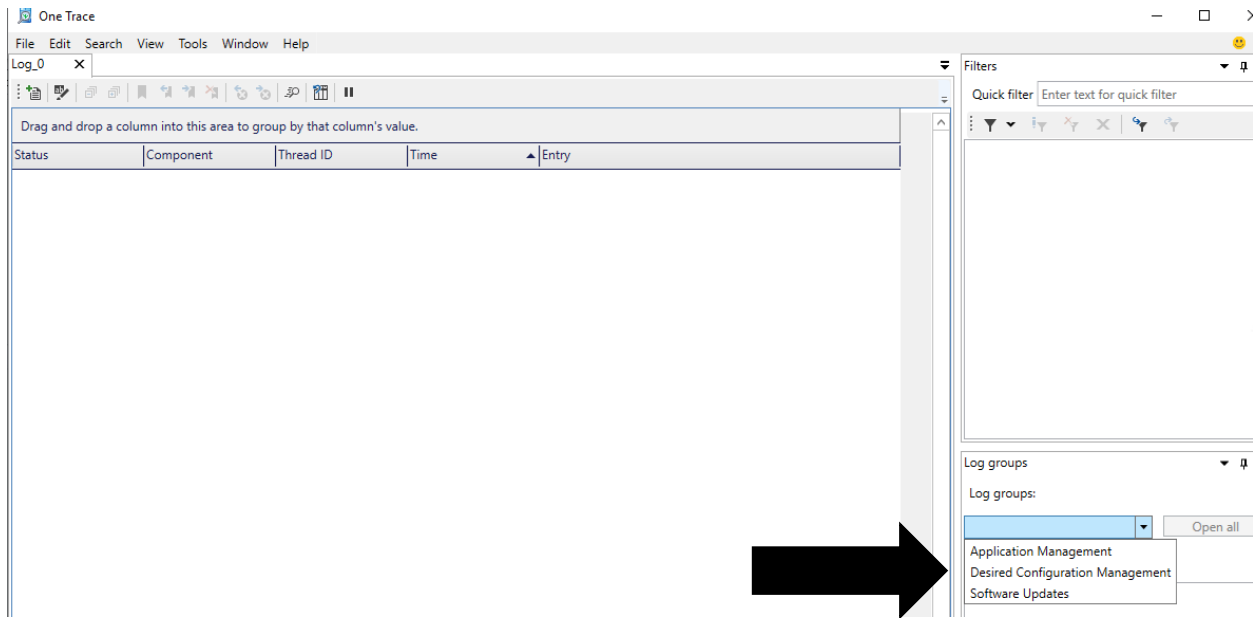
OneTrace log groups

First install Support Center tool from below location



OneTrace now supports customizable log groups, similar to the feature in Support Center. Log groups allow you to open all log files for a single scenario. OneTrace currently includes groups for the following scenarios:

- Application management
- Compliance settings (also referred to as Desired Configuration Management)
- Software updates



Improvements to extend and migrate on-premises site to Microsoft Azure

The tool to extend and migrate on-premises site to Microsoft Azure now supports provisioning multiple site system roles on a single Azure virtual machine. You can add site system roles after the initial Azure virtual machine deployment has completed.

https://docs.microsoft.com/en-us/configmgr/core/support/azure-migration-tool#bkmk_add_role

Other updates

Starting with this version, the following features are no longer pre-release:

- Azure Active Directory user group discovery
- Synchronize collection membership results to Azure Active Directory
- CMPivot standalone
- Client apps for co-managed devices (previously known as *Mobile apps for co-managed devices*)

Thanks

Ram Lan

2nd April 2020