



How to install Power BI Server on Current Branch 1910

In this post, I will show you how to install and configure Power BI Server on CB1910. I already have database on this server (**CB.RAMLAN.CA**). The database is CM_TOR. I will be using the same database for Power BI Server.

 PowerBIReportServer.exe	23-Jan-2020 7:45 ...	Application	272,901 KB
---	----------------------	-------------	------------

 PowerBIReportServer.exe Properties

General	Compatibility	Digital Signatures
Security	Details	Previous Versions

Property	Value
Description	
File description	Microsoft Power BI Report Server
Type	Application
File version	1.6.7236.4246
Product name	Microsoft Power BI Report Server
Product version	1.6.7236.4246
Copyright	Copyright (c) Microsoft Corporation. All ri...
Size	266 MB
Date modified	23-Jan-2020 7:45 AM
Language	English (United States)
Original filename	PowerBIReportServer.exe

— ×

Microsoft Power BI Report Server

(September 2019)

Welcome

Install Power BI Report Server

Power BI Report Server transmits information about your installation experience, as well as other usage and performance data, to Microsoft to help improve the product. To learn more about Power BI Report Server data processing and privacy controls, please see [Privacy Statement](#). Learn how to opt out of collection [here](#).

Microsoft Power BI Report Server

(September 2019)

Choose an edition to install

☐ Choose a free edition:

Evaluation (expires in 180 days)

☒ Enter the product key:

[Learn more](#)

Cancel

< Previous

Next >

Microsoft Power BI Report Server

(September 2019)

Review the license terms

MICROSOFT SOFTWARE LICENSE TERMS

MICROSOFT POWER BI REPORT SERVER DEVELOPER

These license terms are an agreement between Microsoft Corporation (or based on where you live, one of its affiliates) and you. Please read them. They apply to the software named above, which includes the media on which you received it, if any. The terms also apply to any Microsoft

- updates,
- supplements,
- Internet-based services, and
- support services

for this software, unless other terms accompany those items. If so, those terms apply.

BY USING THE SOFTWARE, YOU ACCEPT THESE TERMS. IF YOU DO NOT ACCEPT THEM,

☒ I accept the license terms

Cancel

< Previous

Next >

Microsoft Power BI Report Server

(September 2019)

Install Database Engine

You'll need an instance of SQL Server Database Engine to store the report server database.

☒ Install Power BI Report Server only

You'll need to have or install a Database Engine instance on this server or on a different server.

[Learn more about supported Database Engine versions and editions](#)

Cancel

< Previous

Next >


Microsoft Power BI Report Server

(September 2019)

Specify an install location

Install location

C:\Program Files\Microsoft Power BI Report Server

 Browse

Cancel

< Previous

Install

Microsoft Power BI Report Server

(September 2019)

Setup completed

Setup has installed the files you need. You're ready to configure your report server.

⦿ Configure manually and customize settings

We'll start Report Server Configuration Manager for you to configure your report server.

[Learn more](#)



Configure report server

Close

The Report Server Configuration Connection

Report Server Connection

Please specify a server name, click the Find button, and select a report server instance to configure.

Server Name:

CB

Find

Report Server Instance:

PBIRS

Connect

Cancel

Report Server Configuration Manager: CB\PBIRS

Report Server Configuration Manager

Connect

CB\PBIRS

Service Account

Web Service URL

Database

Web Portal URL

E-mail Settings

Execution Account

Encryption Keys

Subscription Settings

Scale-out Deployment

Power BI Service (cloud)

Report Server Status



Use the Report Server Configuration Manager tool to define or modify settings for the report server and web portal. Before you can use the report server, you must configure the Web Service URL, the database, and the Web Portal URL.

Current Report Server

Instance ID:

PBIRS

Edition:

Power BI Report Server - Developer

Product Version:

15.0.1102.646

Report Server Database Name:

Report Server Mode:

Started

Report Service Status:

Start

Stop

Results

Copy

Apply

Exit

Report Server Configuration Manager

Connect

CB\PBIRS

Service Account

Web Service URL

Database

Web Portal URL

E-mail Settings

Execution Account

Encryption Keys

Subscription Settings

Scale-out Deployment

Power BI Service (cloud)

Service Account

Specify a built-in account or Windows domain user account to run the report server service.

Report Server Service Account

Choose an option to set the service account and then click Apply.

☒ Use built-in account:

Virtual Service Account

☐ Use another account:

Account (Domain\user):

Password:

Results

Copy

Apply

Exit

Report Server Configuration Manager

Connect

CB\PBIRS

Service Account

Web Service URL

Database

Web Portal URL

E-mail Settings

Execution Account

Encryption Keys

Subscription Settings

Scale-out Deployment

Power BI Service (cloud)

Report Server Database

The report server stores all report server content and application data in a database. Use this page to create or change the report server database or update database connection credentials.

Current Report Server Database

Click Change database to select a different database or create a new database.

SQL Server Name:

Database Name:

Report Server Mode:

Change Database

Current Report Server Database Credential

The following credentials are used by the report server to connect to the report server database. Use the options below to choose a different account or update a password.

Credential:

Login:

Password:

Change Credentials

Results

Copy

Apply

Exit

Change Database

Choose whether to create or configure a report server database.

Action

Database Server
Database
Credentials
Summary
Progress and Finish

Select one of the following options to create an empty report server database or select an existing report server database that has content you want to use.

Select a task from the following list:

- ☒ Create a new report server database.
☐ Choose an existing report server database.



Previous

Next

Cancel

Change Database

Choose whether to create or configure a report server database.

Action

Database Server

Database
Credentials
Summary
Progress and Finish

Choose a local or remote instance of a SQL Server Database Engine and specify credentials that have permission to connect to that server.

Connect to the Database Server:

Server Name:

CB

Authentication Type:

Current User - Integrated Security

Test Connection



Test Connection Succeeded.

OK

RAMLAN\Administrator



Test Connection



Previous

Next

Cancel

Change Database

Choose whether to create or configure a report server database.

Action

Database Server

Database

Credentials

Summary

Progress and Finish

Enter a database name and select the language to use for running SQL scripts.

Database Name:

BICM_TOR

Temp Database Name:

BICM_TORTemp

Language:

English (United States)

Report Server Mode:

Native



Previous

Next

Cancel

Change Database

Choose whether to create or configure a report server database.

Action

Database Server

Database

Credentials

Summary

Progress and Finish

Specify the credentials of an existing account that the report server will use to connect to the report server database. Permission to access the report server database will be automatically granted to the account you specify.

Credentials:

Authentication Type:

Service Credentials

User name:

NT SERVICE\PowerBIReportServer

Password:



Previous

Next

Cancel

Change Database

Choose whether to create or configure a report server database.

Action

Database Server

Database

Credentials

Summary

Progress and Finish

The following information will be used to create a new report server database. Verify this information is correct before you continue.

SQL Server Instance: CB
Report Server Database: BICM_TOR
Temp Database: BICM_TORTempDB
Report Server Language: English (United States)
Report Server Mode: Native
Authentication Type: Service Account
Username: NT SERVICE\PowerBIRReportServer
Password: *****



Previous

Next

Cancel

Change Database

Choose whether to create or configure a report server database.

Action

Database Server

Database

Credentials

Summary

Progress and Finish

Please wait while the Report Server Database Configuration wizard configures the database. This might take several minutes to complete.



Verifying database sku	Success
Generating database script	Success
Running database script	Success
Generating rights scripts	Success
Applying connection rights	Success
Setting DSN	Success



Previous

Finish

Cancel

Report Server Configuration Manager

Connect

CB\PBIRS

Service Account

Web Service URL

Database

Web Portal URL

E-mail Settings

Execution Account

Encryption Keys

Subscription Settings

Scale-out Deployment

Power BI Service (cloud)

Report Server Database

The report server stores all report server content and application data in a database. Use this page to create or change the report server database or update database connection credentials.

Current Report Server Database

Click Change database to select a different database or create a new database.

SQL Server Name:CB

Database Name:BICM_TOR

Report Server Mode:Native

Change Database

Current Report Server Database Credential

The following credentials are used by the report server to connect to the report server database. Use the options below to choose a different account or update a password.

Credential:Service Account

Login:NT SERVICE\PowerBIReportServer

Password:*****

Change Credentials

Results

✓ 18:44:28.9744 | Stopping report server "PowerBIReportServer" on CB.

✓ 18:44:30.5465 | Starting report server "PowerBIReportServer" on CB.

The task completed successfully.

Copy

ApplyExit

Report Server Configuration Manager: CB\PBIRS

— □ ×

Report Server Configuration Manager

Connect

CB\PBIRS

Service Account

Web Service URL

Database

Web Portal URL

E-mail Settings

Execution Account

Encryption Keys

Subscription Settings

Scale-out Deployment

Power BI Service (cloud)

Web Service URL

Configure a URL used to access the Report Server. Click Advanced to define multiple URLs for a single Report Server instance, or to specify additional parameters on the URL.

Report Server Web Service Virtual Directory

Virtual Directory:PBIRS

Report Server Web Service Site identification

IP Address:All Assigned (Recommended)

TCP Port:80

HTTPS Certificate:(Not Selected)

HTTPS Port:

Advanced...

Report Server Web Service URLs

URLs:<http://CB:80/PBIRS>

Results

✓ 19:29:46.3743 | Reserving url http://+:80

✓ 19:29:46.9791 | Stopping report server "PowerBIReportServer" on CB.

✓ 19:29:48.9987 | Starting report server "PowerBIReportServer" on CB.

The task completed successfully.

Copy

ApplyExit

Report Server Configuration Manager

Connect

CB\PBIRS

Service Account

Web Service URL

Database

Web Portal URL

E-mail Settings

Execution Account

Encryption Keys

Subscription Settings

Scale-out Deployment

Power BI Service (cloud)

Web Portal URL

Configure a URL to access Web Portal. Click Advanced to define multiple URLs, or to specify additional parameters on the URL.

Web Portal Site Identification

Virtual Directory: PBIRports

URLs: <http://CB:80/PBIRports>

Advanced

Results

19:31:56.6778 | Reserving url http://+:80

19:31:56.7406 | Reserving url http://+:80

19:31:57.1943 | Stopping report server "PowerBIReportServer" on CB.

19:31:59.2141 | Starting report server "PowerBIReportServer" on CB.

The task completed successfully.

Copy

Apply

Exit

Report Server Configuration Manager

Connect

CB\PBIRS

Service Account

Web Service URL

Database

Web Portal URL

E-mail Settings

Execution Account

Encryption Keys

Subscription Settings

Scale-out Deployment

Power BI Service (cloud)

E-mail Settings

To use report server e-mail, specify an existing SMTP server and an e-mail account that can send e-mail from that server.

SMTP Settings

To edit, change the fields and click the Apply button.

Sender Address: administrator@ramlan.ca

Current SMTP Delivery Method: Use SMTP server

SMTP Server: ex2019.ramlan.ca

Authentication: No authentication

Results

18:49:02.0629 | Apply Sender E-Mail Settings

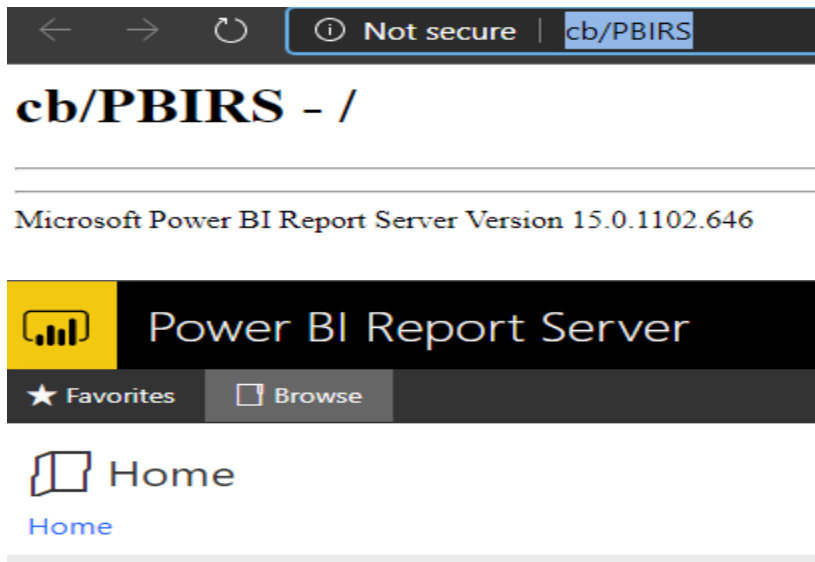
Your configuration has been updated with your new e-mail information.

Copy

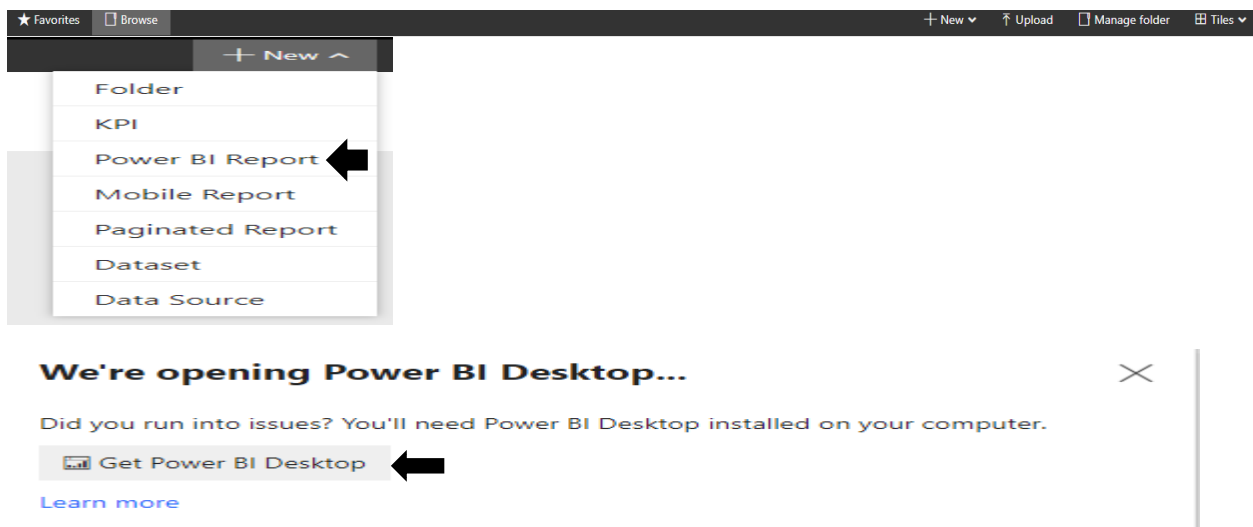
Apply

Exit

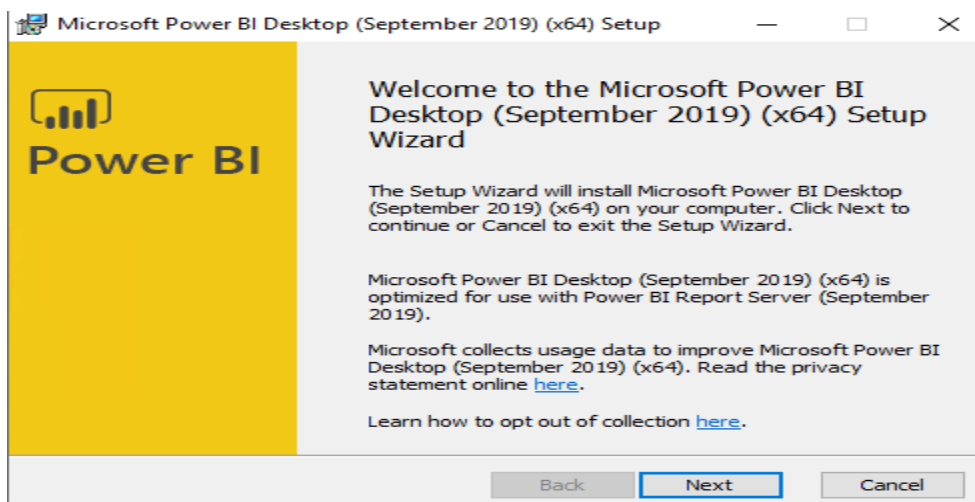
Now we shall make sure the URL's works - <http://cb/PBIRS> & <http://cb/PBIReports/browse/>

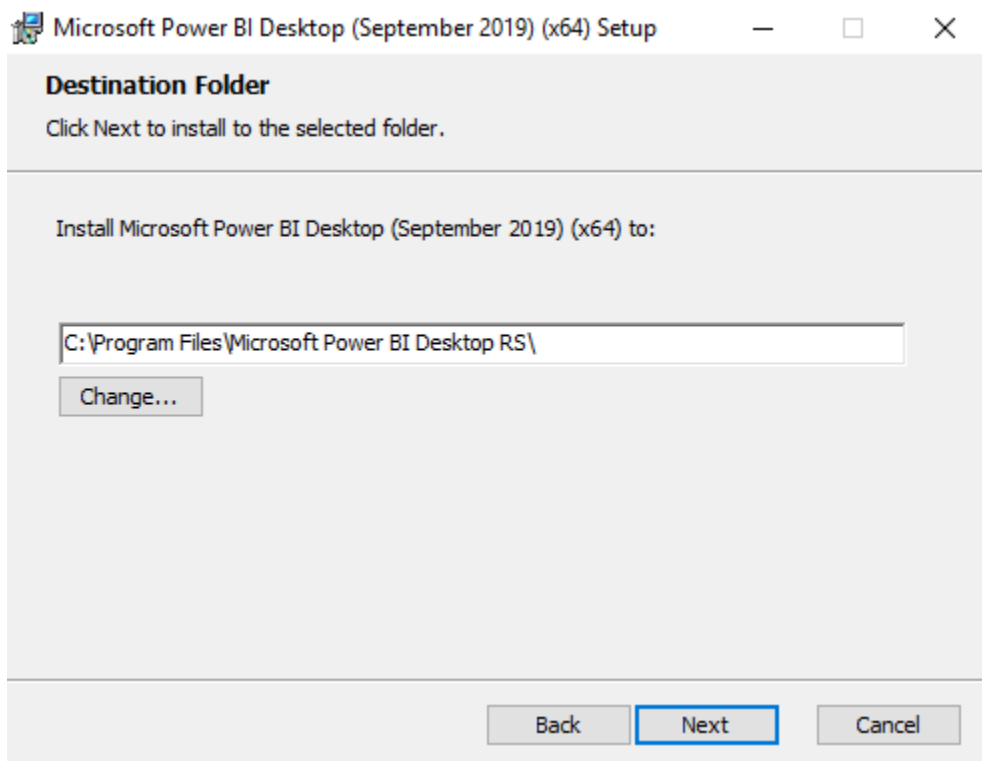
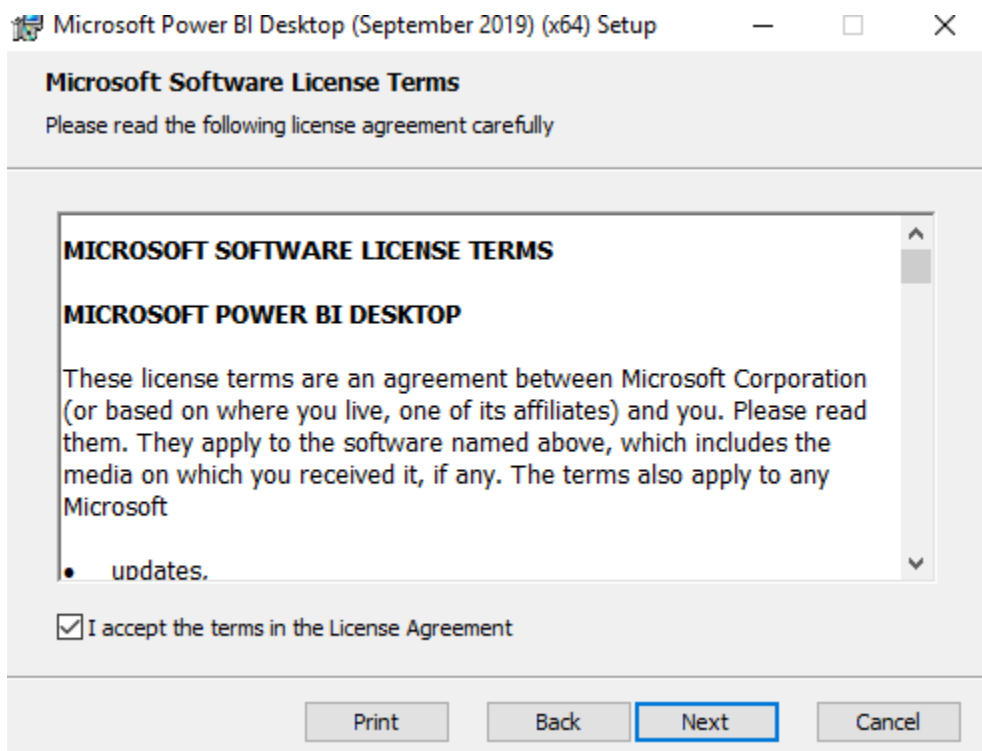


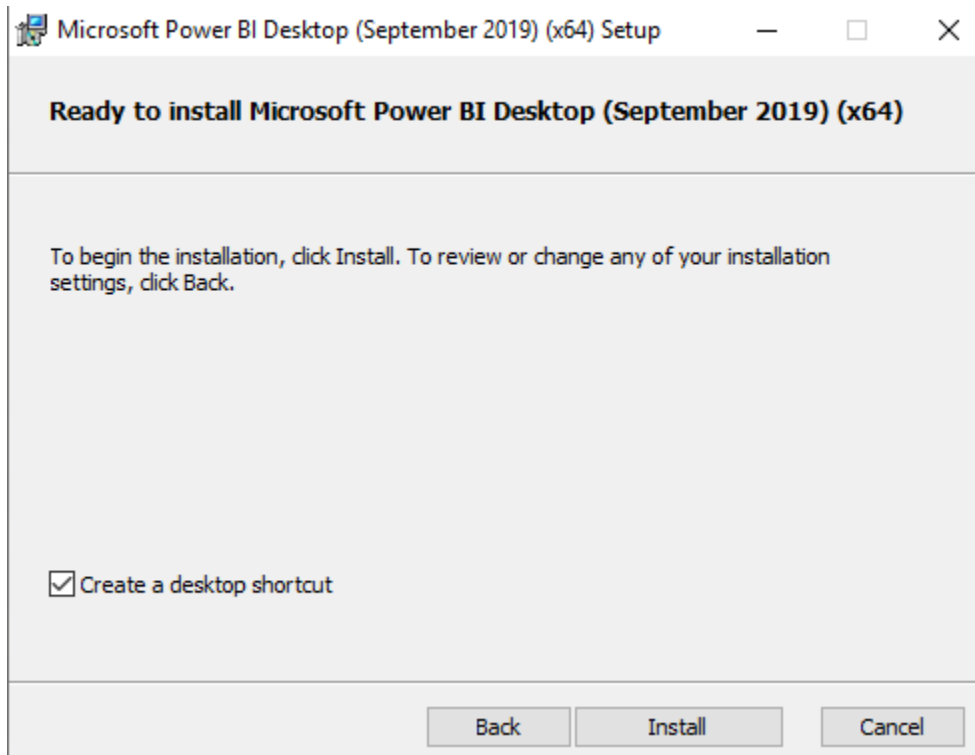
Now we will install Power BI Desktop.



<https://www.microsoft.com/en-us/download/details.aspx?id=57271>






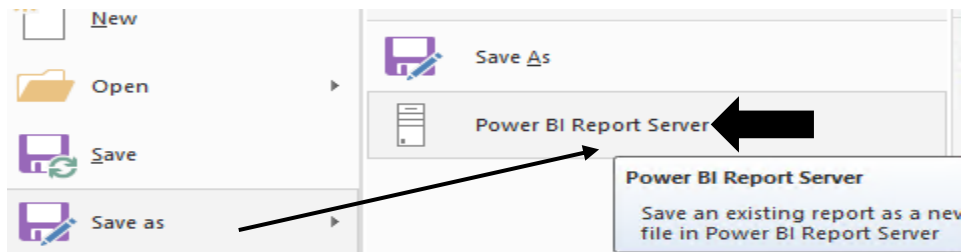
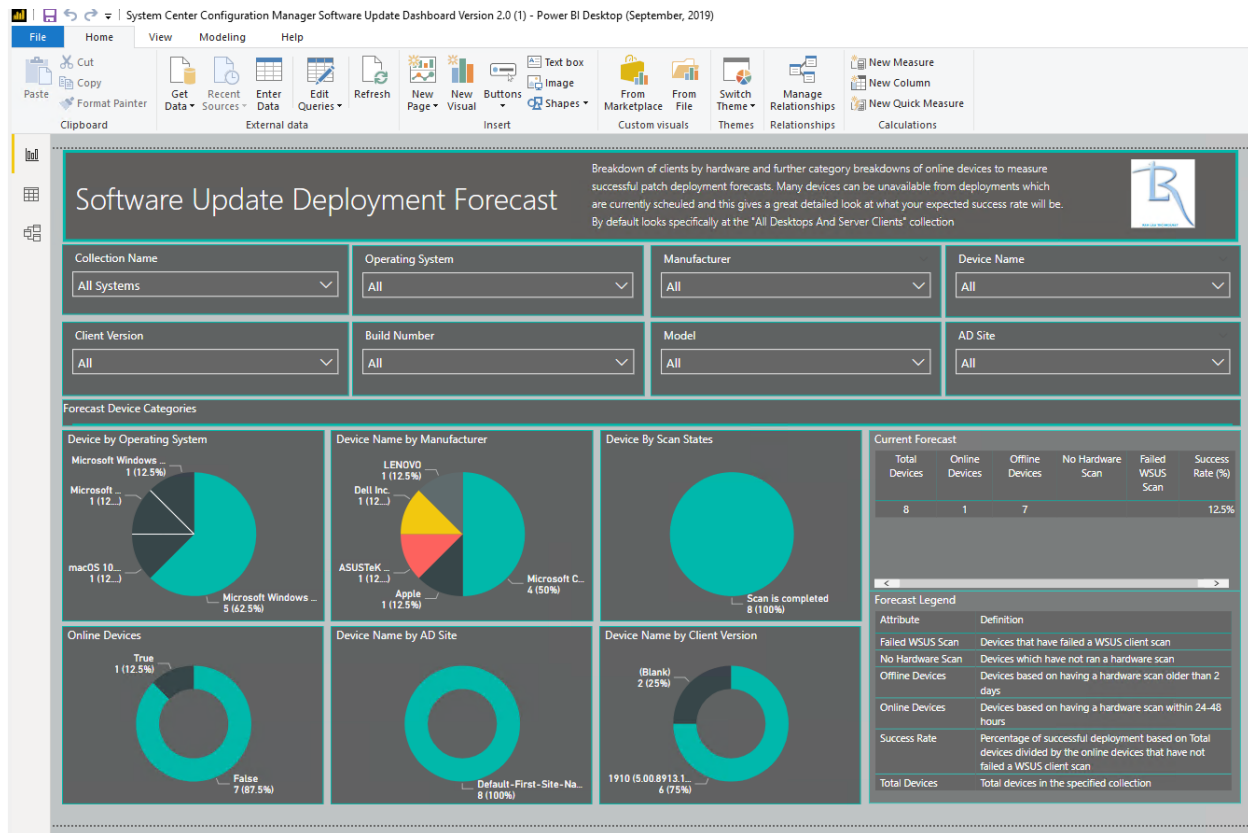


Now we have a working Power BI Server & Power BI Desktop. Now it is time to open sample report, I got from Power BI MVP (On Twitter). I am going to save the report on BI Server.

Open Power BI Desktop & open below report

Name	Size	Date modified
 System Center Configuration Manager Software Update Dashboard...	2,598 KB	21-Mar-2020 6:26 PM

This is how it will look in Power BI Desktop.



Power BI Report Server Selection

Choose the report server you would like to save your report to. You can select from the recent report server list or enter a new report server address.

Recent report servers

New report server address (Example: <http://reportserver/reports> or <https://reportserver/reports>)

<http://cb/PBIReports>

OK

Cancel

Save report

↑ <http://cb/PBIReports/>

File name:

OK

Cancel

Saving to Power BI Report Server

✓ Success!

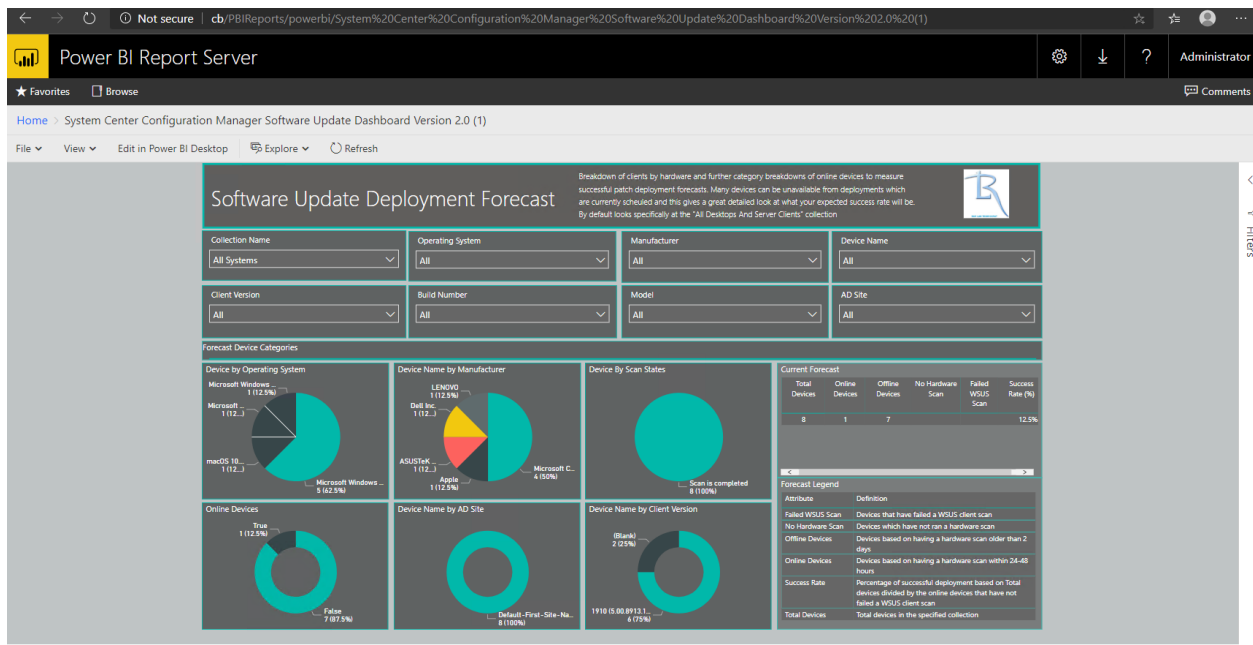
[Take me there](#)

Close

Cancel

Now we have the report on BI Server.

The screenshot shows the Power BI Report Server web interface. The browser address bar displays "Not secure | cb/PBIReports/browse/". The page header includes the Power BI logo and the text "Power BI Report Server". Below the header, there are tabs for "Favorites" and "Browse". The main content area shows a "Home" link and a section titled "POWER BI REPORTS (1)". Under this section, there is a list of reports, with the first one being "System Center Configuration Manager Software Update Dashboard Version 2.0 (1).pbix".



Below is Power BI Server details.

Report Server Configuration Manager

Report Server Status

Use the Report Server Configuration Manager tool to define or modify settings for the report server and web portal. Before you can use the report server, you must configure the Web Service URL, the database, and the Web Portal URL.

Current Report Server

Instance ID:	PBIRS
Edition:	Power BI Report Server - Developer
Product Version:	15.0.1102.646
Report Server Database Name:	BICM_TOR
Report Server Mode:	Native
Report Service Status:	Started

Buttons: Start, Stop

Results:

Copy

Apply Exit

That's it. Now we have a working Power BI Server & BI Desktop on Current Branch 1910.

Thanks

Ram Lan - 21st Mar 2020