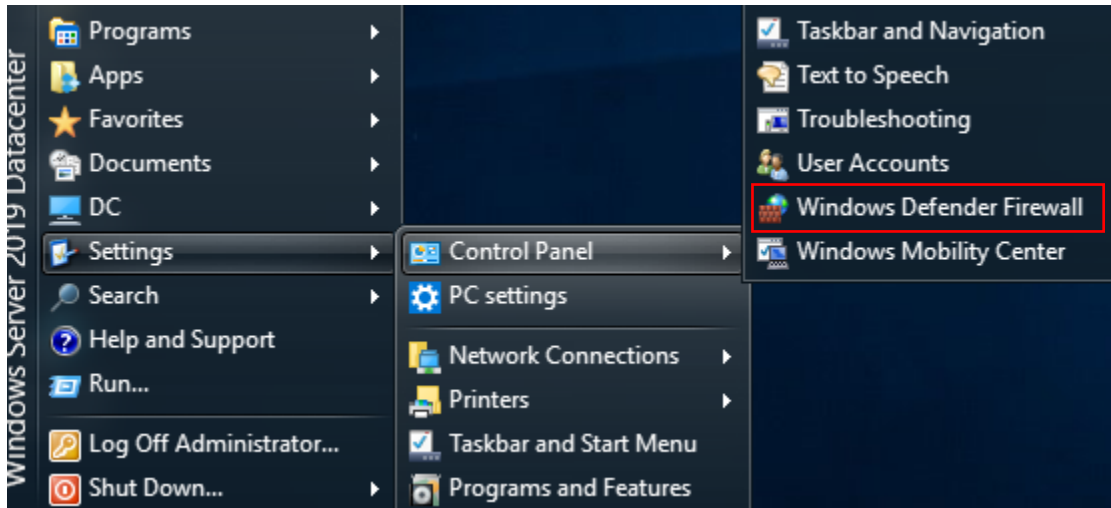


# Block Application from accessing Internet

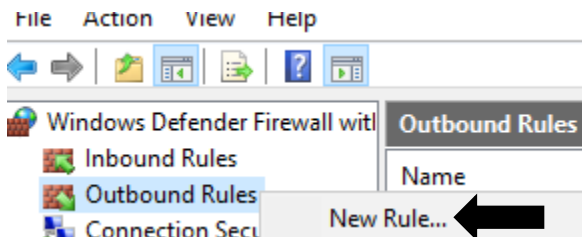
In this post, I will show you how to block application from accessing internet. I have an application that does not have a setting within the application to disable update. As a result, I have to configure outbound rule within firewall to block this application from accessing internet.



Control Panel Home

[Allow an app or feature through Windows Defender Firewall](#)

- Change notification settings
- Turn Windows Defender Firewall on or off
- Restore defaults
- Advanced settings ←
- Troubleshoot my network



## Rule Type

Select the type of firewall rule to create.

### Steps:

- Rule Type
- Program
- Action
- Profile
- Name

What type of rule would you like to create?

- ☒ **Program**  
Rule that controls connections for a program.
- ☐ **Port**  
Rule that controls connections for a TCP or UDP port.
- ☐ **Predefined:**  
Active Directory Domain Services  
Rule that controls connections for a Windows experience.
- ☐ **Custom**  
Custom rule.

&lt; Back

Next &gt;

Cancel

## Program

Specify the full program path and executable name of the program that this rule matches.

### Steps:

- Rule Type
- Program
- Action
- Profile
- Name

Does this rule apply to all programs or a specific program?

- ☐ **All programs**  
Rule applies to all connections on the computer that match other rule properties.
- ☒ **This program path:**  
%ProgramFiles%\Intuit\QuickBooks 2016\QBW32Pro.exe  
Example: c:\path\program.exe  
          %ProgramFiles%\browser\browser.exe

Browse...

&lt; Back

Next &gt;

Cancel

**Action**

Specify the action to be taken when a connection matches the conditions specified in the rule.

**Steps:**

- Rule Type
- Program
- Action
- Profile
- Name

What action should be taken when a connection matches the specified conditions?

- ☐ **Allow the connection**  
This includes connections that are protected with IPsec as well as those are not.
- ☐ **Allow the connection if it is secure**  
This includes only connections that have been authenticated by using IPsec. Connections will be secured using the settings in IPsec properties and rules in the Connection Security Rule node.

Customize...

- ☒ **Block the connection**

< Back

Next >

Cancel

**Profile**

Specify the profiles for which this rule applies.

**Steps:**

- Rule Type
- Program
- Action
- Profile
- Name

When does this rule apply?

- ☒ **Domain**  
Applies when a computer is connected to its corporate domain.
- ☒ **Private**  
Applies when a computer is connected to a private network location, such as a home or work place.
- ☒ **Public**  
Applies when a computer is connected to a public network location.

< Back

Next >

Cancel

## New Outbound Rule Wizard



### Name

Specify the name and description of this rule.

#### Steps:

- Rule Type
- Program
- Action
- Profile
- Name**

Name:

Block QB

Description (optional):

< Back

Finish

Cancel

| Outbound Rules |       |         |         |        |          |            |               |                |          |            |             |                      |  |
|----------------|-------|---------|---------|--------|----------|------------|---------------|----------------|----------|------------|-------------|----------------------|--|
| Name           | Group | Profile | Enabled | Action | Override | Program    | Local Address | Remote Address | Protocol | Local Port | Remote Port | Authorized Computers |  |
| Block QB       |       | All     | Yes     | Block  | No       | %Progra... | Any           | Any            | Any      | Any        | Any         | Any                  |  |

When this application tries to access internet to check for updates, it will fail.

Thanks

Ram Lan

11<sup>th</sup> Mar 2020

I even disabled this option within the program when it prompted me for update before firewall rule.

