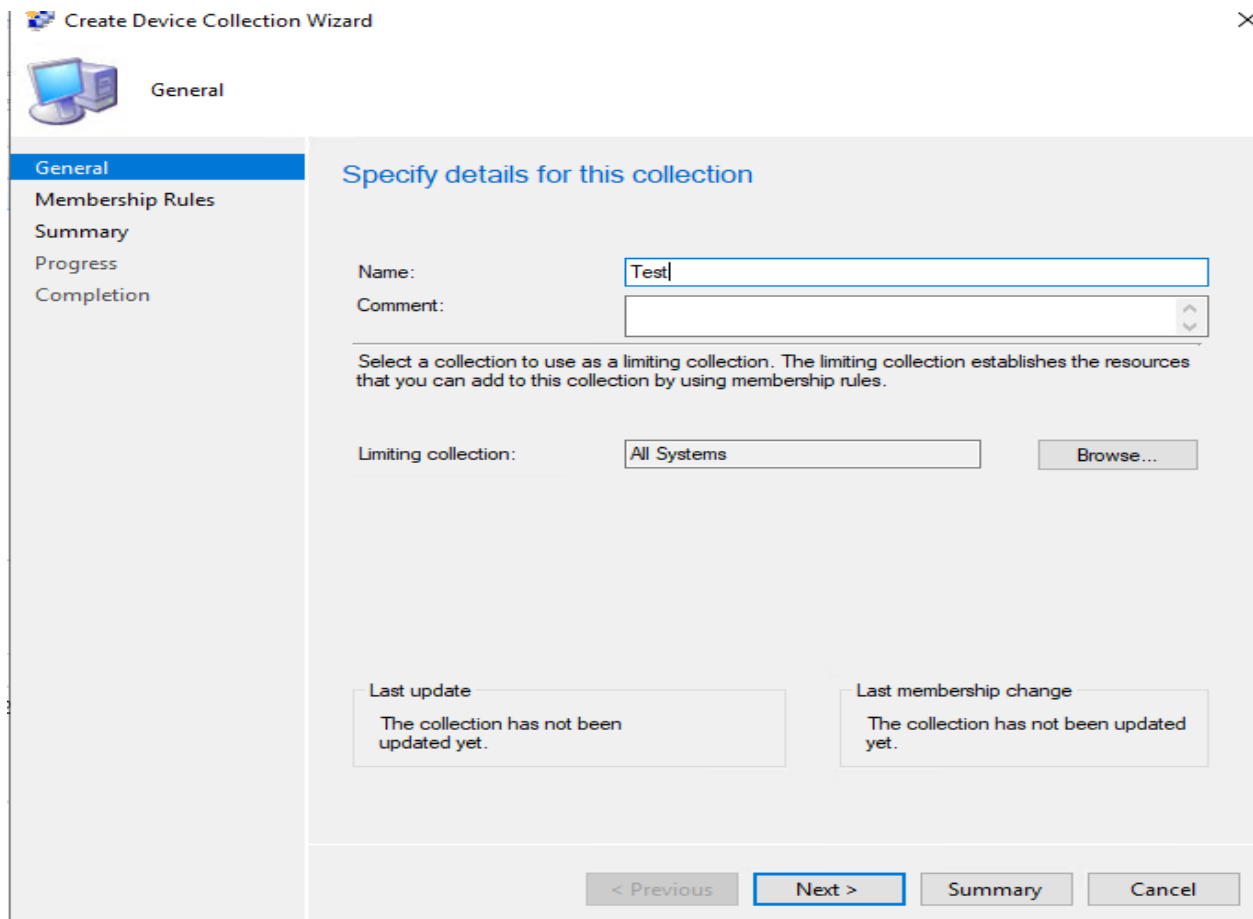
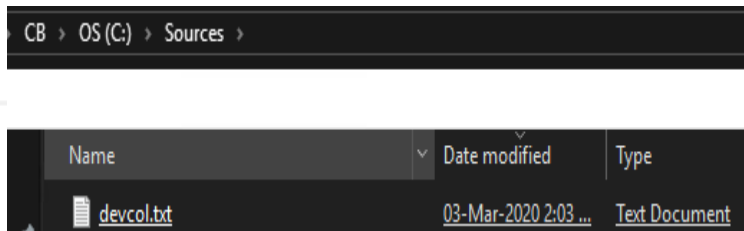
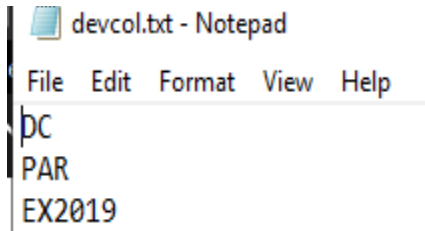


Add Device to Collection using PowerShell

In this post, I will show you how to add devices to a collection using PowerShell. For this exercise, I have created a device collection called TEST. To this collection, I will be adding few devices (DC, PAR, EX2019). I have created a txt file called Devcol and have added above devices to this txt file and saved the file in sources folder..





Membership Rules

General

Membership Rules

Summary

Progress

Completion

Define membership rules for this collection

Membership rules determine the resources that are included in the collection when it updates. You can use membership rules to add a specific object or a set of objects from a query. The collection membership can also include or exclude other collections. Membership rules can add only those objects that are members of the limiting collection.

Membership rules:

Rule Name	Type	Collection Id
There are no items to show in this view.		



Add Rule

Edit...

Delete

☐ Use incremental updates for this collection

An incremental update periodically evaluates new resources and then adds resources that qualify to this collection. This option does not require you to schedule a full update for this collection.

☒ Schedule a full update on this collection

Occurs every 7 days effective 03-Mar-2020 2:04 PM

Schedule...

< Previous

Next >

Summary

Cancel

Configuration Manager



This collection has no membership rules. It will not contain any members until at least one membership rule is defined.

OK

Cancel



Summary

General

Membership Rules

Summary

Progress

Completion

Confirm the settings

Details:

- General
 - Collection Name: Test
 - Comment:

To change these settings, click Previous. To apply the settings, click Next.

< Previous

Next >

Summary

Cancel



Completion

General

Membership Rules

Summary

Progress

Completion



The Create Device Collection Wizard completed successfully

Details:



Success: General

- Collection Name: Test
- Comment:

To exit the wizard, click Close.

< Previous

Next >

Summary

Close

Here is our device collection



Test

All Systems

0

0

0



Connect to a site



Connect via Windows PowerShell

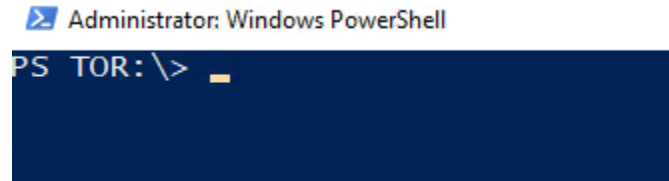


Connect via Windows PowerShell ISE



About Configuration Manager

Now we are connected to Primary Site Server through PS.



Enter below command and after few minutes the devices should be added to the device collection.
Pretty easy...

```
Get-Content "C:\Sources\devcol.txt" | foreach { Add-CMDeviceCollectionDirectMembershipRule -CollectionName "Test" -ResourceID (Get-CMDevice -Name $_).ResourceID }
```

Test 3 items							
Search							
Icon	Name	Client Type	Client	Primary User(s)	Currently Logged on User	Site Code	Client Activity
	DC	Computer	Yes		RAMLAN\Administrator	TOR	Active
	EX2019	Computer	Yes		RAMLAN\Administrator	TOR	Active
	PAR	Computer	Yes		RAMLAN\Administrator	TOR	Active

Thanks

Ram Lan
3rd Mar 2020