

Extended Security Updates (ESU) for Windows 7 Operating System

As you might be aware end of support for Windows 7 finished on 14th Jan 2020. Microsoft will not release any security or patch updates going forward. All businesses are required to upgrade Windows 7 to Windows 10 to secure their environment.

If you need more time to complete the upgrade of Windows 7 – You can request for ESU license from Microsoft through VLSC center. It will cost business \$25 for one year per workstation to \$75 for three years per workstation. During this period, you will get all the updates for Windows 7.

The ESU updates can be deployed directly using online update method or through Configuration Manager using WSUS. I will be explaining more about the update's installation through Configuration Manager.

When you obtain ESU MAK key from VLSC center – Microsoft has specified these Activation IDs for Windows clients:

Year 1: 77db037b-95c3-48d7-a3ab-a9c6d41093e0

Year 2: 0e00c25d-8795-4fb7-9572-3803d91b6880

Year 3: 4220f546-f522-46df-8202-4d07afd26454

In order to use ESU updates following requirements must be met which, I will go in detail.

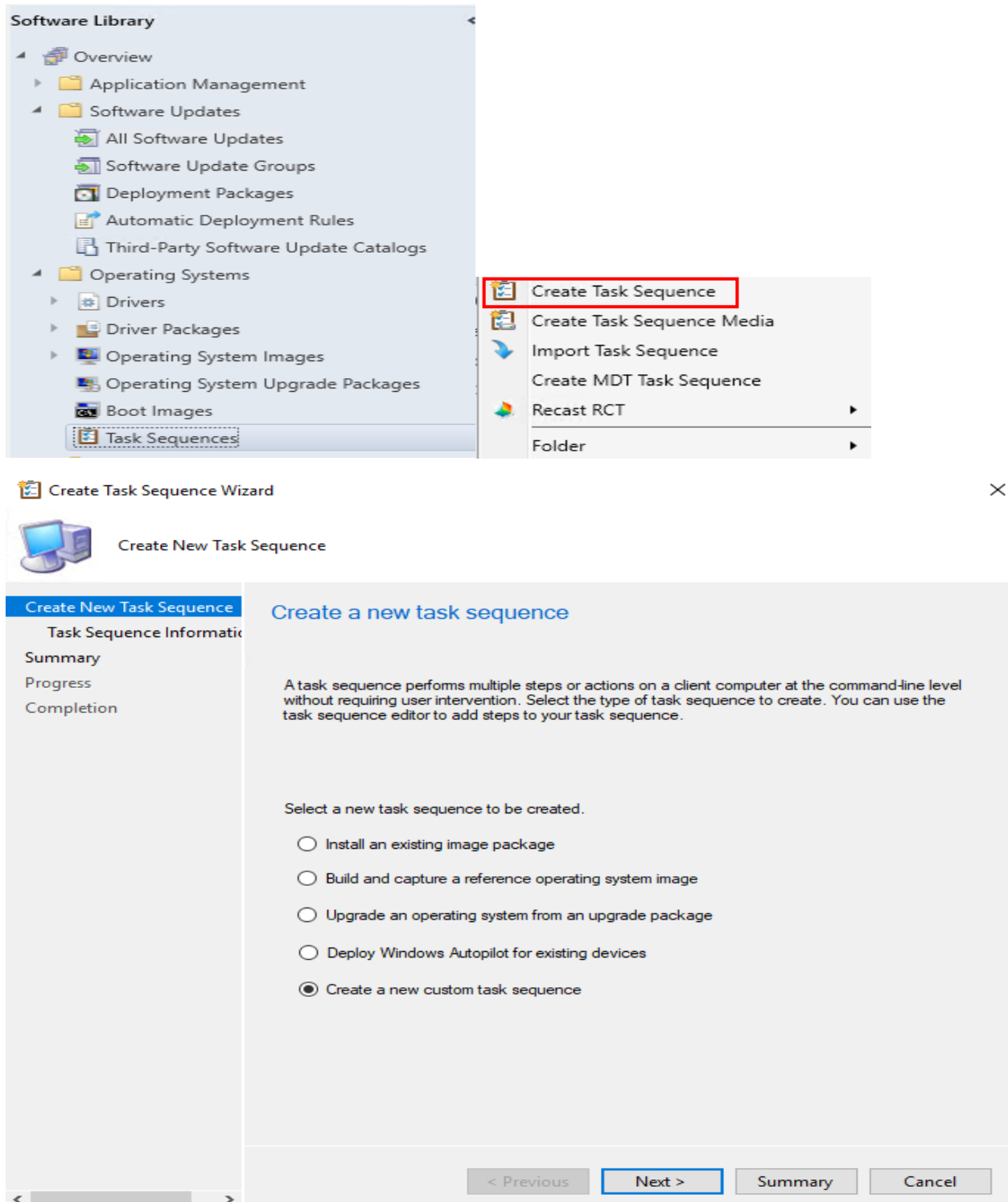
1. Obtain ESU MAK key from VLSC center
2. Make sure SHAH-2 KB4474419 is installed
3. Make sure SSU KB4490628 is installed
4. Make sure SSU rollup updates KB4516655 & KB4519976 is installed
5. Create custom task sequence to install ESU MAK key & MS ESU ID – Year 1 or Year 2 or Year 3
6. Test ESU updates before rolling out
7. Deploy ESU updates to Windows 7 collection
8. Monitor ESU update status in Configuration Manager console for % completion
9. Create Automatic Deployment Rule (ADR) for ESU updates – Patch Tuesday Every Month

If you want to check whether updates (2-4) are installed – open command prompt as Administrator and run below command on Windows 7 client

```
wmic qfe list full /format:htable >C:\updates.htm
```

Open HTM file in the browser and search the table for the above KB numbers and their install status.

Now it is time to create custom task sequence to install ESU MAK key and Microsoft Activation ID and deploy to Windows 7 collection.



Create Task Sequence Wizard



Task Sequence Information

Create New Task Sequence

Task Sequence Information

Summary

Progress

Completion

Specify task sequence information

Task sequence name:

ESU Pre Req Win 7

Description:

This will be for Win 7 client to prep them for future ESU update installation

Boot image:

Browse...

< Previous

Next >

Summary

Cancel

Create Task Sequence Wizard



Summary

Create New Task Sequence

Task Sequence Information

Summary

Progress

Completion

Confirm the settings

Details:

Verify the following task sequence details.

Create a new task sequence

- Name: ESU Pre Req Win 7
- Comment: This will be for Win 7 client to prep them for future ESU update installation

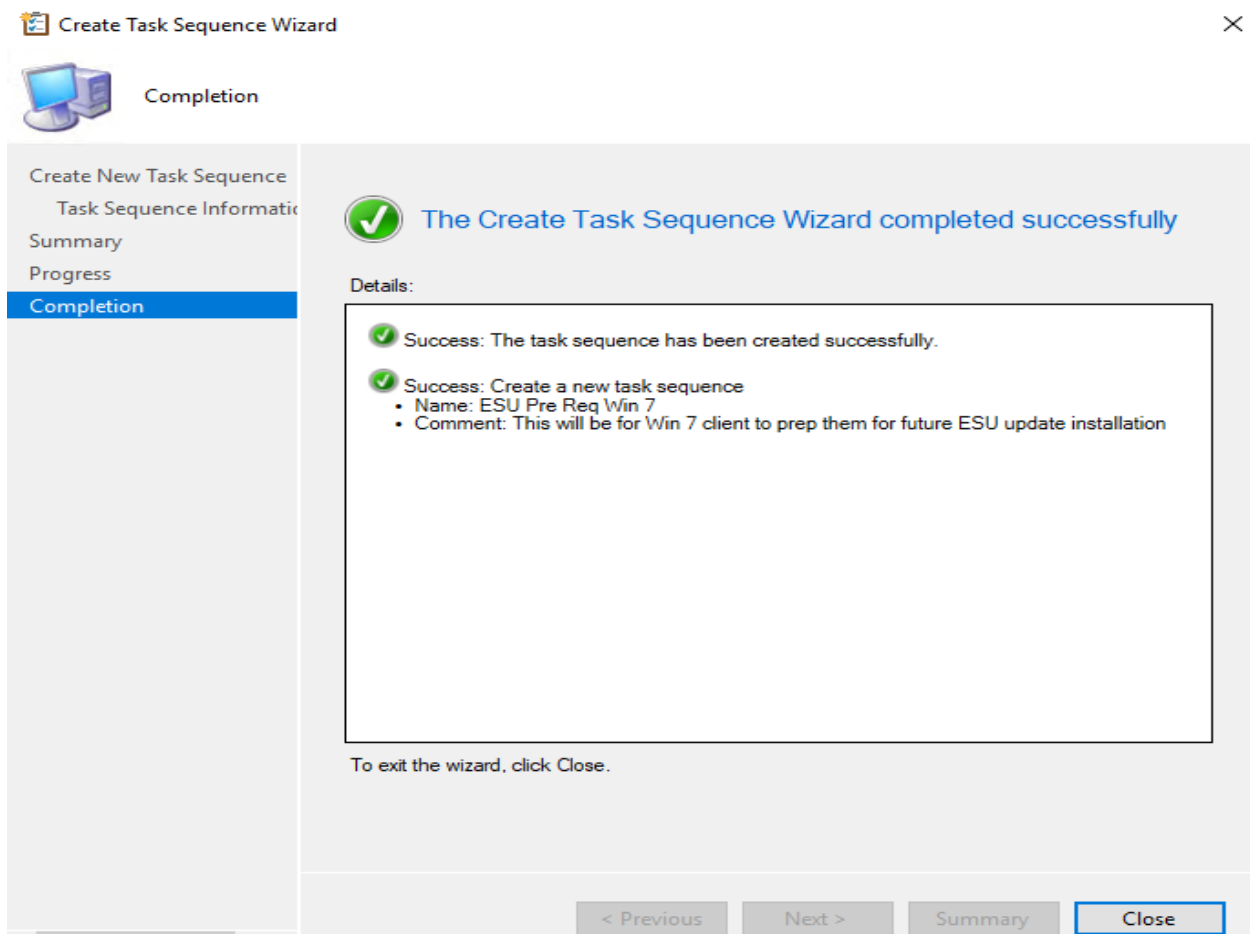
To change these settings, click Previous. To apply the settings, click Next.

< Previous

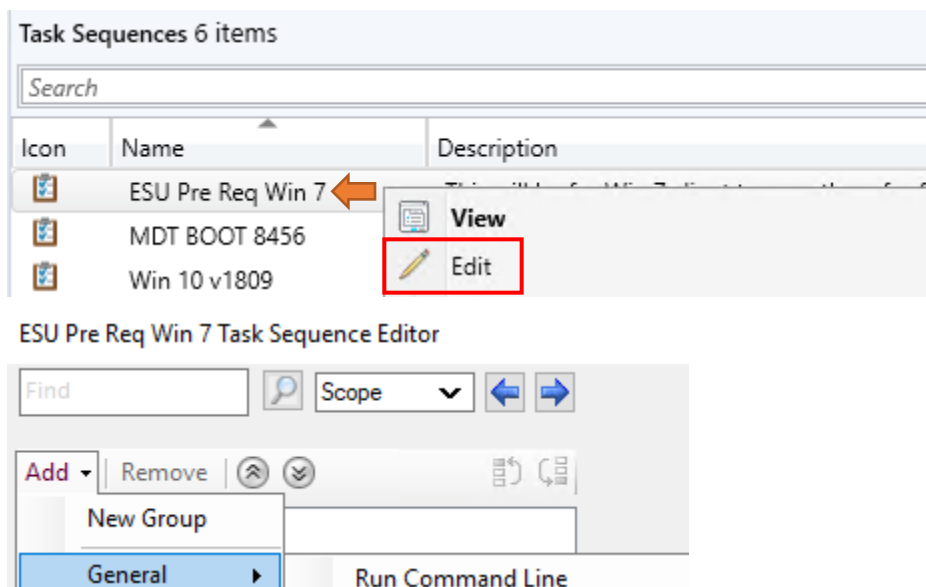
Next >

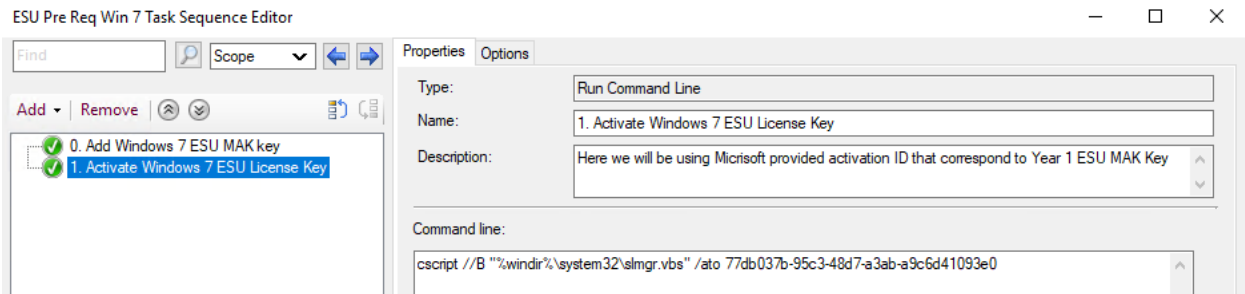
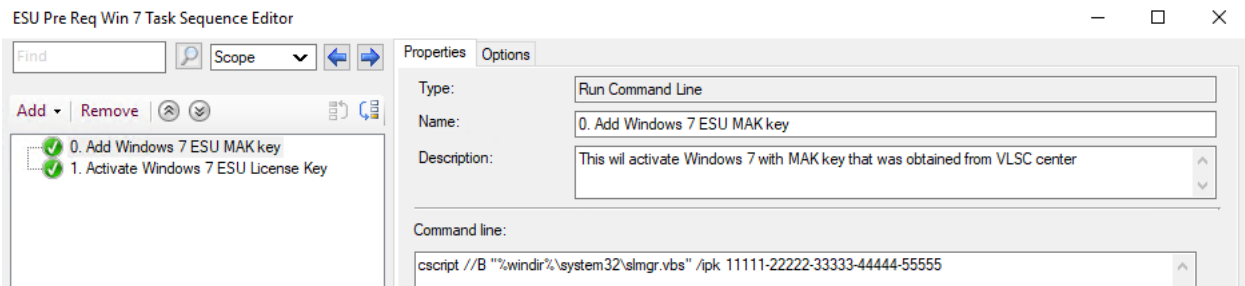
Summary

Cancel

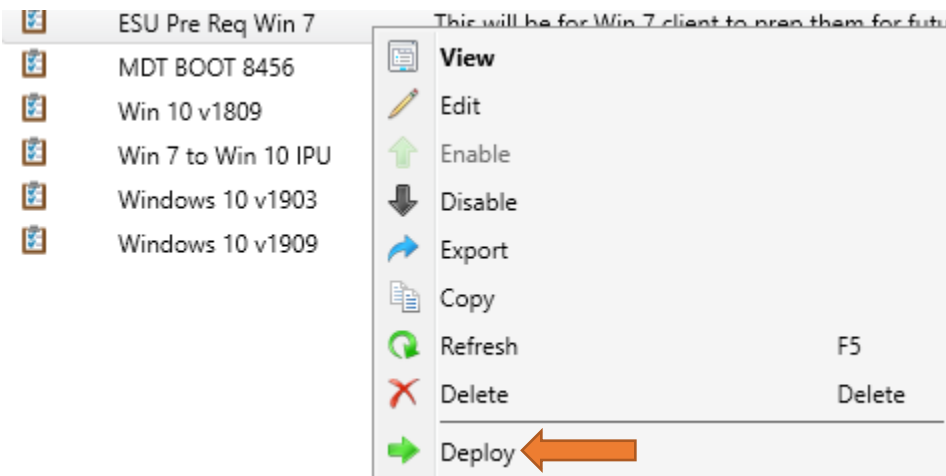


Now it is time to edit the task sequence and insert run command line






Now we have the task sequence ready for deployment to Windows 7 collection



Deploy Software Wizard

General

General

Deployment Settings

Scheduling

User Experience

Alerts

Distribution Points

Summary

Progress

Completion

Specify general information for this deployment

Task sequence:

Collection:

☐ Use default distribution point groups associated to this collection

☐ Automatically distribute content for dependencies

☐ Pre-download content for this task sequence

Select a previously saved deployment template that defines configuration settings for this deployment. Before you complete this wizard, you have the option to save the current configurations as a new deployment template.

Comments (optional):


< Previous

Next >

Summary

Cancel

Deploy Software Wizard

Deployment Settings

General

Deployment Settings

Scheduling

User Experience

Alerts

Distribution Points

Summary

Progress

Completion

Specify settings to control how this software is deployed

Action:

Purpose:

Specify whether to make this task sequence available to Configuration Manager clients, and whether it is available to run when you deploy an operating system by using boot media, prestaged media, or PXE.

Make available to the following:

< Previous

Next >

Summary

Cancel



Scheduling

General

Deployment Settings

Scheduling

User Experience

Alerts

Distribution Points

Summary

Progress

Completion

Specify the schedule for this deployment

This program will be available as soon as it has been distributed to the content servers unless it is scheduled for a later time below. For required applications, specify the assignment schedule.

☐ Schedule when this deployment will become available: ☐ UTC☐ Schedule when this deployment will expire: ☐ UTC

Assignment schedule:

New...

Edit...

Delete

There are no items to show in this view.

Rerun behavior:

Always rerun program

< Previous

Next >

Summary

Cancel



User Experience

General

Deployment Settings

Scheduling

User Experience

Alerts

Distribution Points

Summary

Progress

Completion

Specify the user experience for the installation of this software on the selected devices

Notification settings:

☒ Allow users to run the program independently of assignments☒ Show Task Sequence progress

When the scheduled assignment time is reached, allow the following activities to be performed outside the maintenance window:

☐ Software installation☐ System restart (if required to complete the installation)

Write filter handling for Windows Embedded devices

☒ Commit changes at deadline or during a maintenance window (requires restarts)

If this option is not selected, content will be applied on the overlay and committed later.

Internet based clients:

☐ Allow task sequence to run for client on the Internet

< Previous

Next >

Summary

Cancel



Alerts

General
Deployment Settings
Scheduling
User Experience
Alerts
Distribution Points
Summary
Progress
Completion

Specify Configuration Manager and Operations Manager alert options

Configuration Manager generates alerts when this task sequence is deployed.

Threshold for successful deployment

☐ Create a deployment alert when the threshold is lower than the following:

Percent success:
After:

Threshold for failed deployment

☐ Create a deployment alert when the threshold is higher than the following:

Percent failure:

< Previous

Next >

Summary

Cancel



Distribution Points

General
Deployment Settings
Scheduling
User Experience
Alerts
Distribution Points
Summary
Progress
Completion

Specify how to run the content for this program

Specify how clients interact with the distribution points to retrieve content from packages referred by the task sequence:

Deployment options:

Clients will always try to get content from distribution points in current boundary group. In addition, interaction with distribution points in neighbor boundary group can be controlled:

☐ Allow clients to use distribution points from the neighbor boundary group

When this content is not available on any distribution points in current and neighbor boundary groups, you can allow the client to use a distribution point in site default boundary group.

☐ Allow clients to use distribution points from the default site boundary group



Token based authentication (recommended) or a network access account must be configured to access content from Windows PE

< Previous

Next >

Summary

Cancel

Deploy Software Wizard



Summary

- General
- Deployment Settings
- Scheduling
- User Experience
- Alerts
- Distribution Points
- Summary**
- Progress
- Completion

Confirm the settings for this new deployment

Details:

Save As Template...

- General
 - Software: ESU Pre Req Win 7
 - Collection: Win 7 (Member Count: 0)
 - Use default distribution point groups associated to this collection: Disabled
 - Automatically distribute content for dependencies: Disabled
 - Pre-download content for this task sequence: Disabled
- Deployment Settings
 - Action: Install
 - Purpose: Available
 - Task sequence deployment option: Only Configuration Manager Clients
 - Allow clients to use a metered Internet connection to download content: Disabled
- Scheduling
 - Schedule when this deployment will become available: Disabled
 - Schedule when this deployment will expire: Disabled
 - Rerun behavior: Always rerun program
- User Experience
 - Allow users to run the program independently of assignments: Enabled
 - Software installation: Disabled
 - System restart (if required to complete the installation): Disabled
 - Allow task sequence to run for client on the Internet: Disabled
 - Commit changes at deadline or during a maintenance window (requires restarts): Enabled
 - Show Task Sequence progress: Enabled

To change these settings, click Previous. To apply the settings, click Next.

< Previous

Next >

Summary

Cancel

Deploy Software Wizard



Completion

- General
- Deployment Settings
- Scheduling
- User Experience
- Alerts
- Distribution Points
- Summary
- Progress
- Completion**



The Deploy Software Wizard completed successfully

Details:

- Success: General
 - Software: ESU Pre Req Win 7
 - Collection: Win 7 (Member Count: 0)
 - Use default distribution point groups associated to this collection: Disabled
 - Automatically distribute content for dependencies: Disabled
 - Pre-download content for this task sequence: Disabled
- Success: Deployment Settings
 - Action: Install
 - Purpose: Available
 - Task sequence deployment option: Only Configuration Manager Clients
 - Allow clients to use a metered Internet connection to download content: Disabled
- Success: Scheduling
 - Schedule when this deployment will become available: Disabled
 - Schedule when this deployment will expire: Disabled
 - Rerun behavior: Always rerun program
- Success: User Experience
 - Allow users to run the program independently of assignments: Enabled
 - Software installation: Disabled
 - System restart (if required to complete the installation): Disabled

To exit the wizard, click Close.

< Previous

Next >

Summary

Close

That's it. We have completed pre requirements for ESU targeting Windows 7 clients.

Thanks

Ram Lan

15th Jan 2020

Note: Extended Security Updates will be released second Tuesday of next month (Feb 2020)