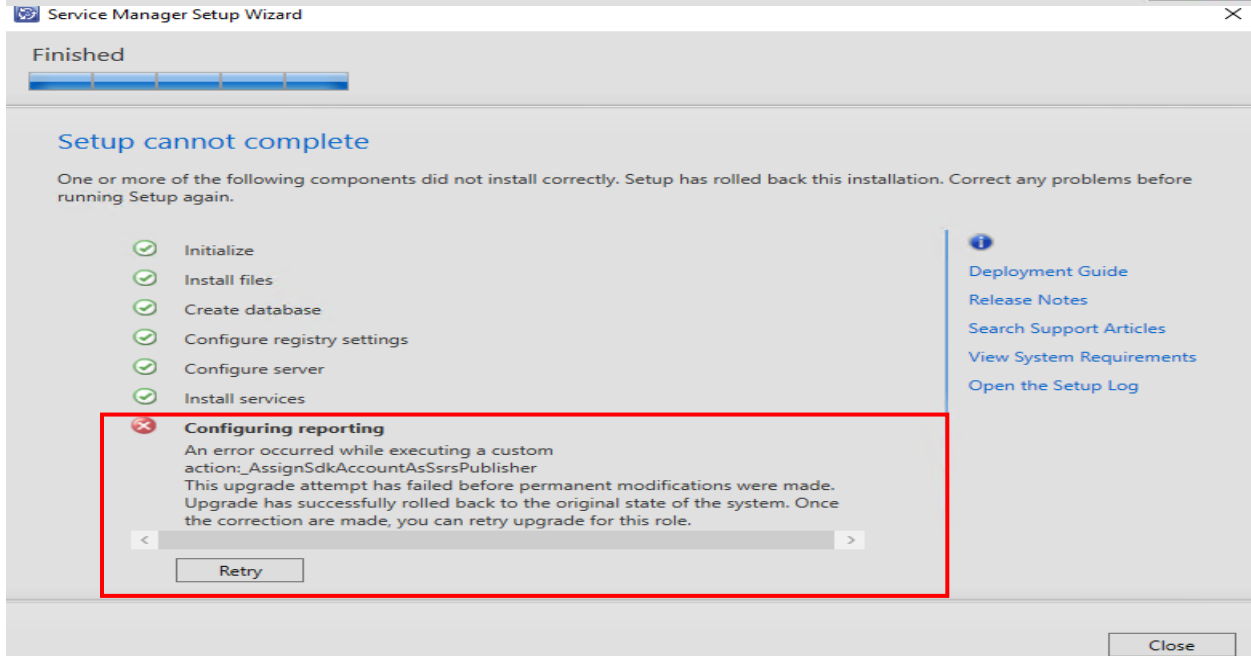
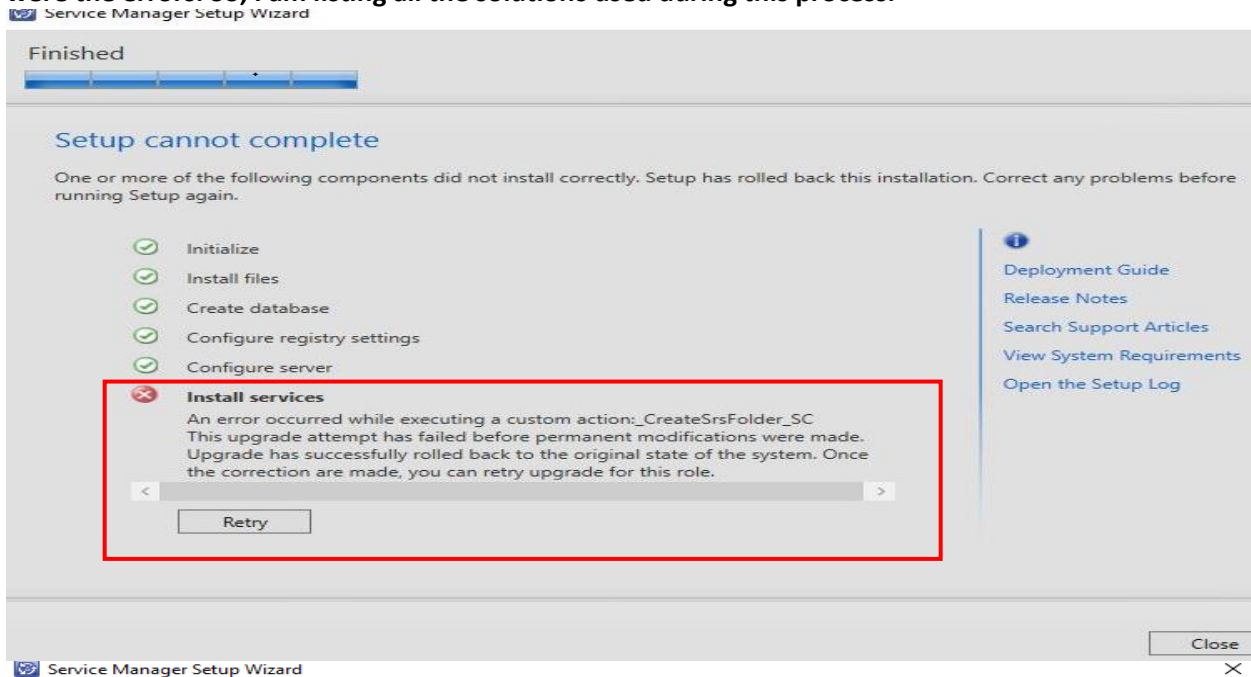


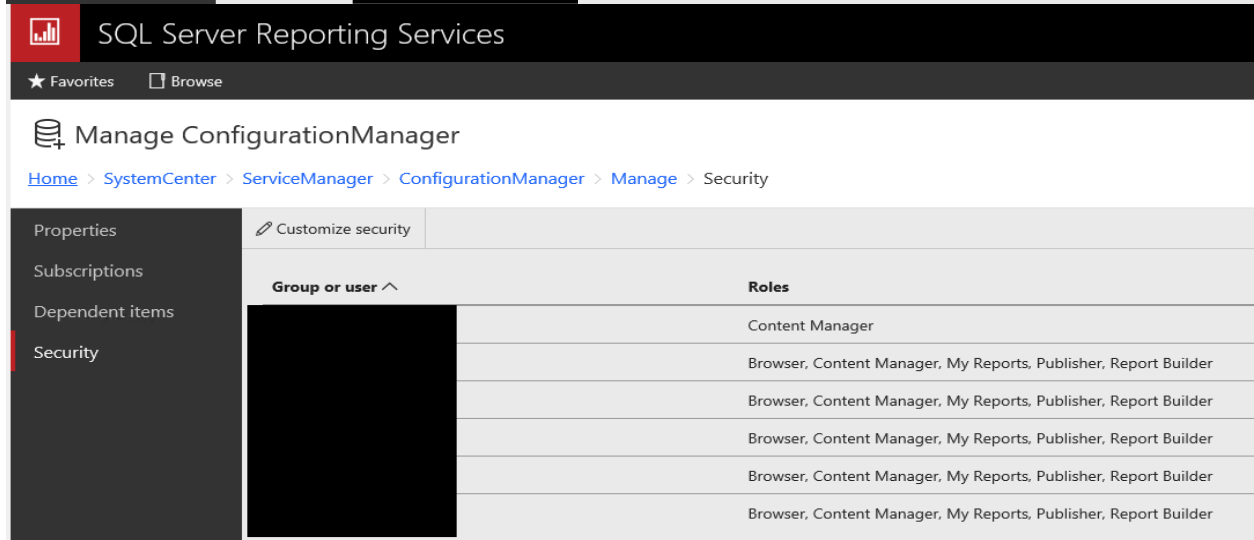
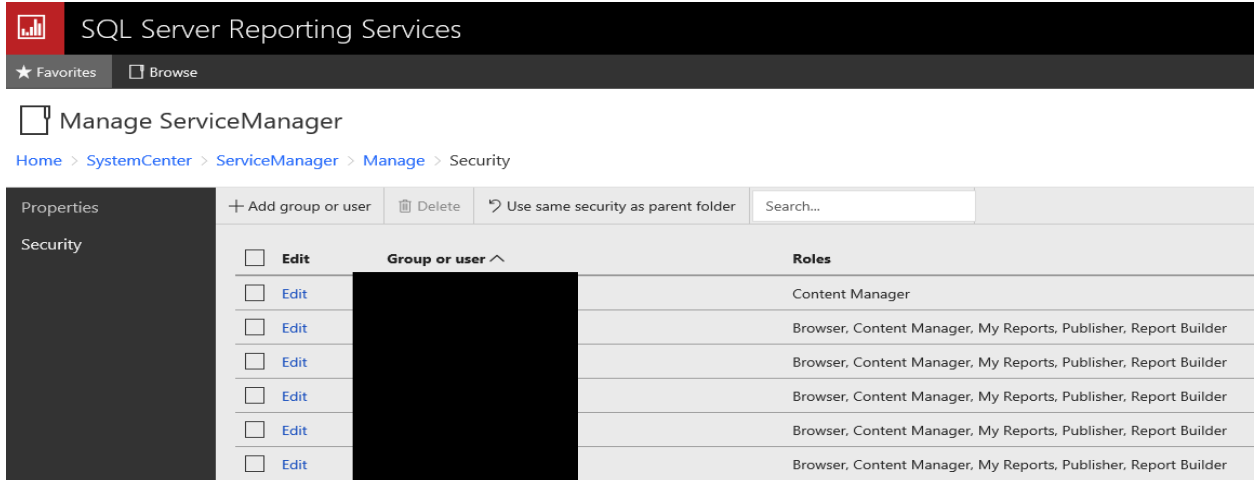
I faced lot of issues with System Center Service Manager Data Warehouse Server installation. Below were the errors. So, I am listing all the solutions used during this process.



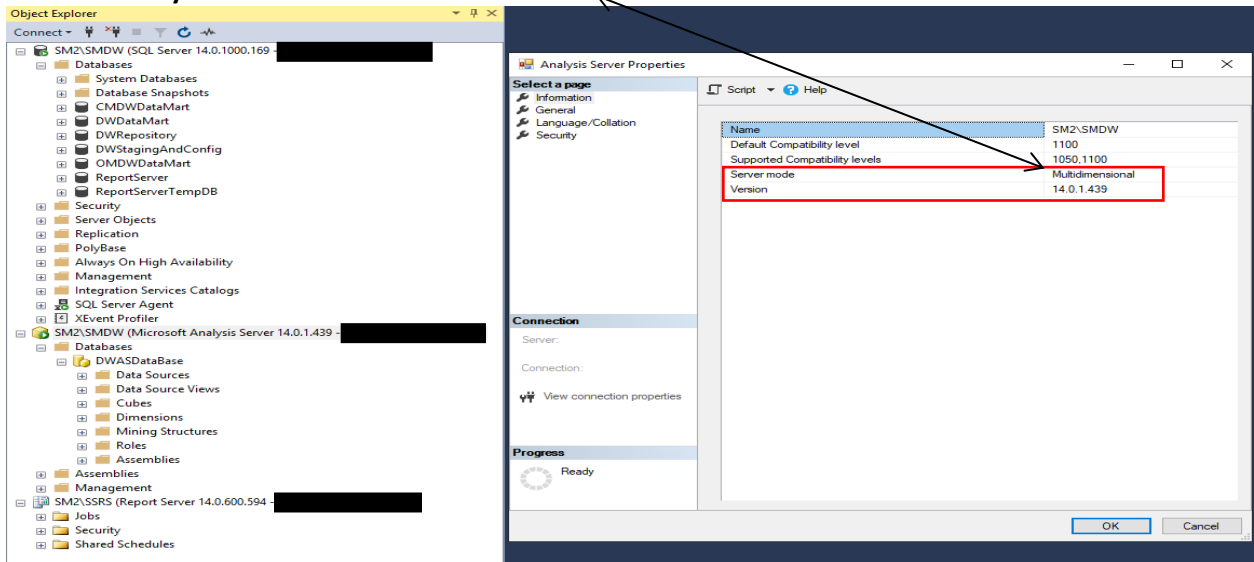
```
AssignSrsRole Error: System.Web.Services.Protocols.SoapException: System.Web.Services.Protocols.SoapException: The user or group name 'BUILTIN\BUILTIN' is not recognized. ---> Microsoft.ReportingServices.Diagnostics.Utilities.Un...
at Microsoft.ReportingServices.Library.ReportingService2005Impl.SetPolicies(String Item, Policy Policies, Guid batchId)
at Microsoft.ReportingServices.WebServer.ReportingService2005.SetPolicies(String Item, Policy Policies)
StackTracer: at System.Web.Services.Protocols.SoapHttpClientProtocol.ReadResponse(SoapClientMessage message, WebResponse response, Stream responseStream, Boolean asyncCall)
at System.Web.Services.Protocols.SoapHttpClientProtocol.Invoke(String methodName, Object parameters)
at Microsoft.Reporting.Setup.ReportingManagedCAs.AssignSrsRole(Session session)
CustomAction _AssignSdkAccountAsSrsPublisher returned actual error code 1603 (note this may not be 100% accurate if translation happened inside sandbox)
12/30/2019 11:02:04.026 [5604]: Assembly Install: Failing with hr=80070005 at RemoveDirectoryAndChildren, line 393
12/30/2019 11:02:04.027 [5604]: Detailed info about C:\Windows\assembly\tmp\OQT56BPK\Microsoft.EnterpriseManagement.OperationsManager.Apm.StatisticCounters.ScriptingLibrary.dll
12/30/2019 11:02:04.028 [5604]: File attributes: 00000080
12/30/2019 11:02:04.083 [5604]: Restart Manager Info: 1 entries
12/30/2019 11:02:04.150 [5604]: Microsoft.ReportingServices.Diagnostics.Utilities.UnknownUserNameException: The user or group name 'BUILTIN\BUILTIN' is not recognized. --->
Microsoft.ReportingServices.Diagnostics.Utilities.UnknownUserNameException: The user or group name 'BUILTIN\BUILTIN' is not recognized.
```



### 7. Remove BUILTIN\BUILTIN Accounts from here

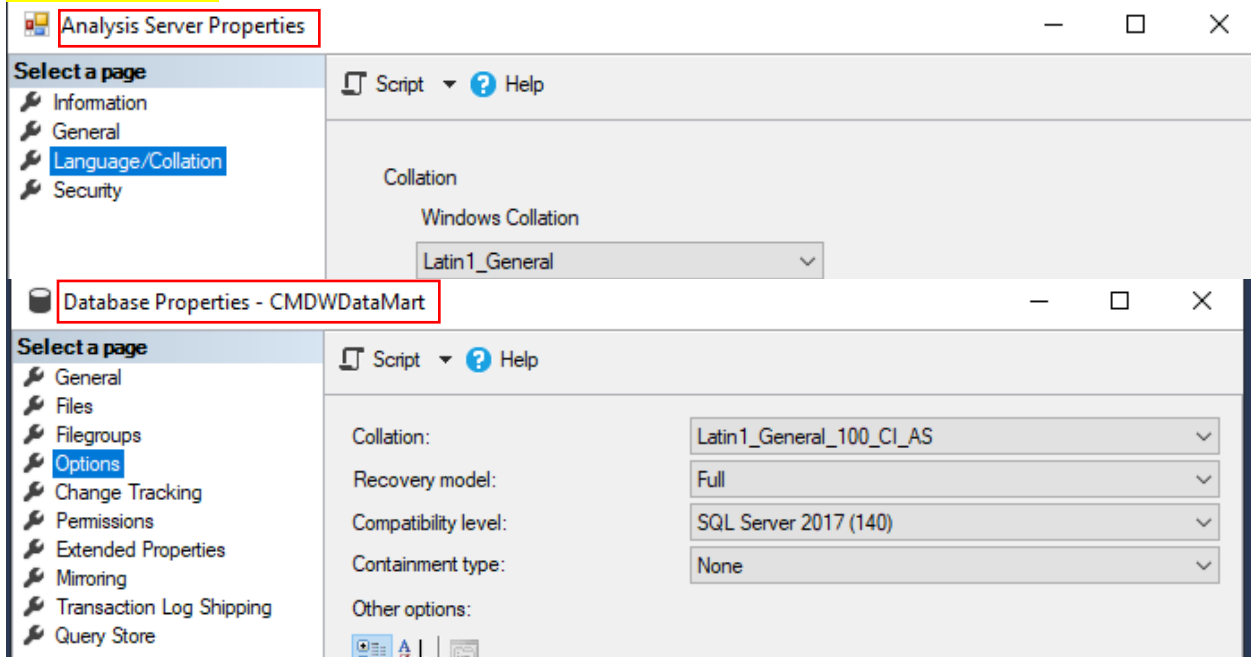


### 3. Check Analysis Server mode is Multidimensional

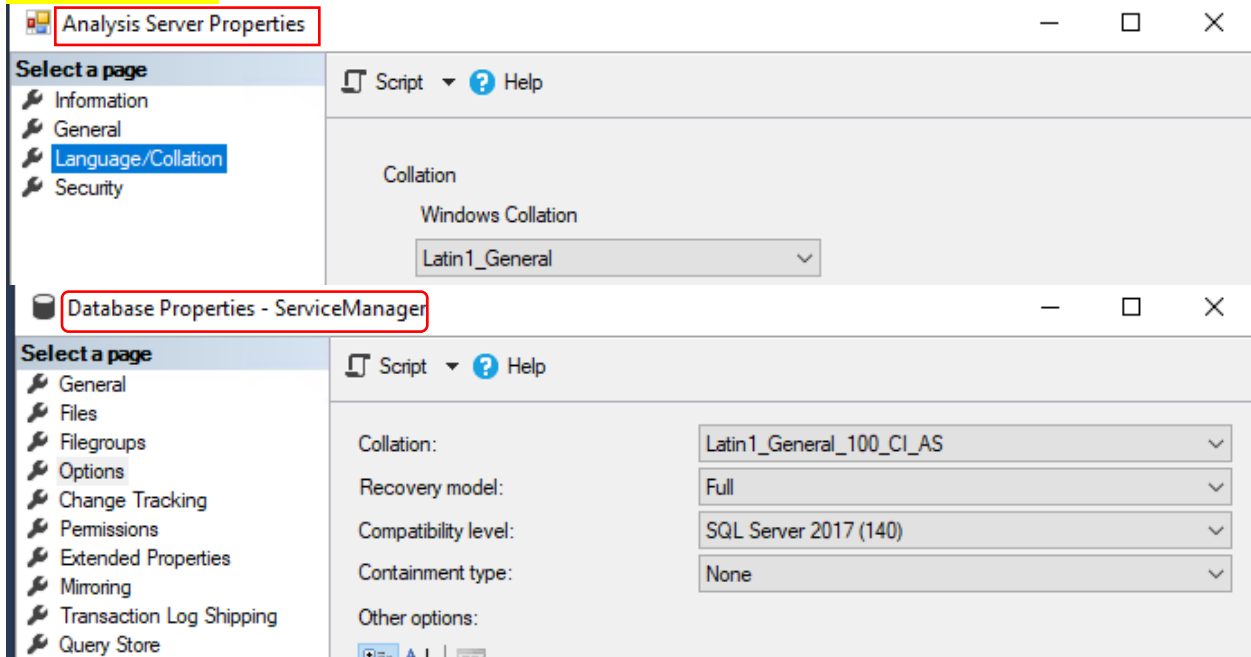


4. Check Collation on both Management Servers. They should be same – if not you will have problem.

SM2.RAMLAN.CA

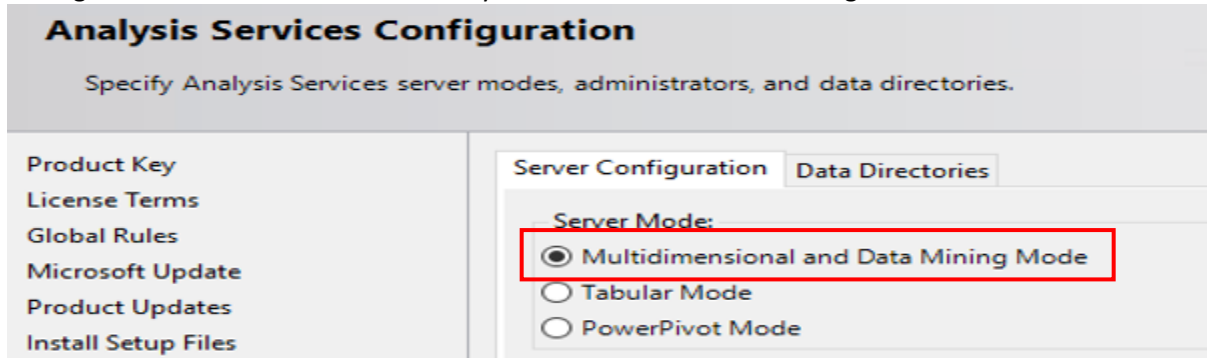


SM1.RAMLAN.CA



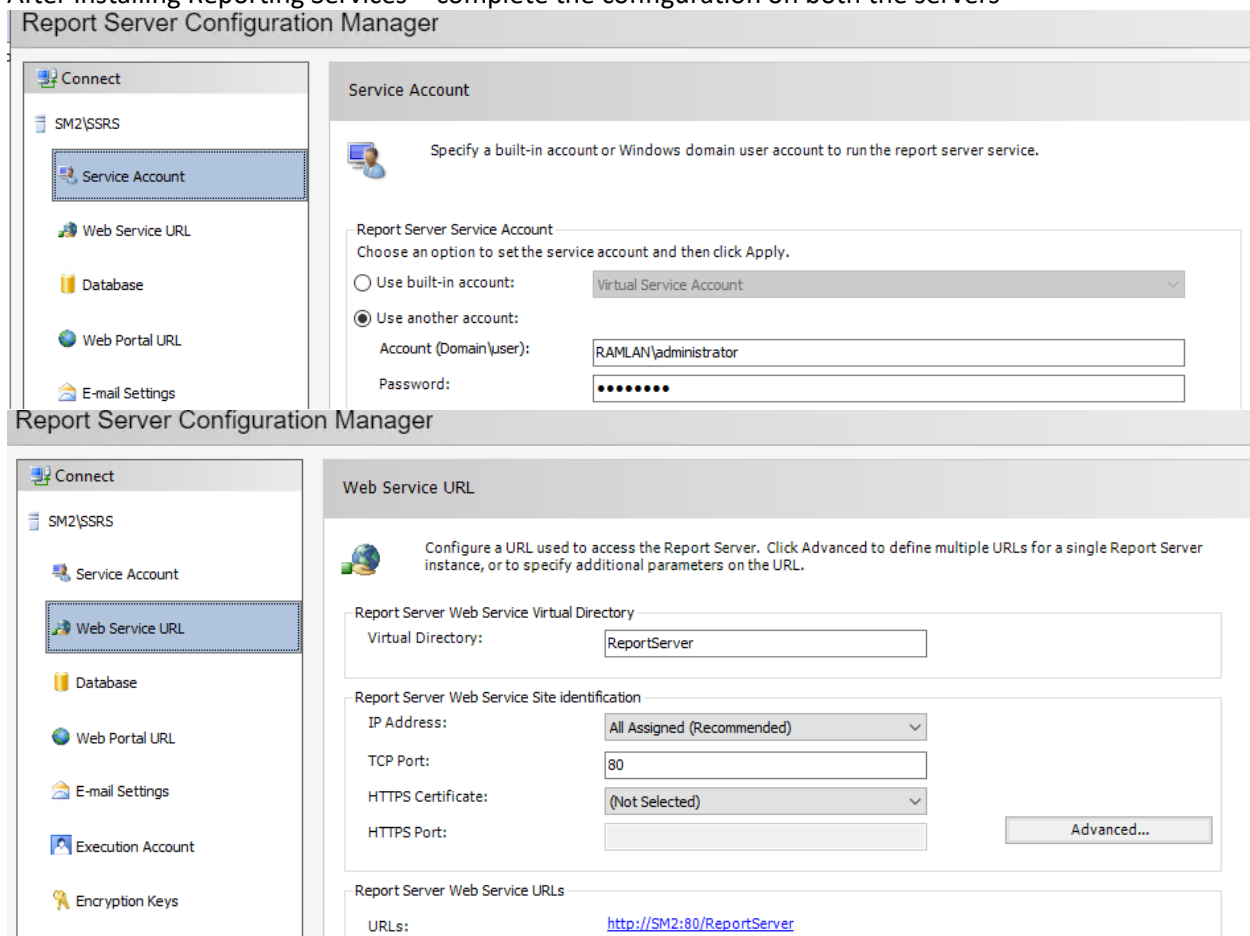
## 2. Analysis Service Server Configuration:

During SQL 2017 installation make sure you select this for Server Configuration



## 5. Reporting Services (SSRS)

After installing Reporting Services – complete the configuration on both the servers



## Report Server Configuration Manager

**Connect**

- SM2\SSRS
- Service Account
- Web Service URL
- Database**
- Web Portal URL
- E-mail Settings
- Execution Account
- Encryption Keys
- Subscription Settings
- Scale-out Deployment

### Report Server Database

The report server stores all report server content and application data in a database. Use this page to create or change the report server database or update database connection credentials.

**Current Report Server Database**

Click Change database to select a different database or create a new database.

SQL Server Name:	SM2\SMDW
Database Name:	ReportServer
Report Server Mode:	Native

[Change Database](#)

**Current Report Server Database Credential**

The following credentials are used by the report server to connect to the report server database. Use the options below to choose a different account or update a password.

Credential:	Service Account
Login:	RAMLAN\administrator
Password:	*****

[Change Credentials](#)

## Report Server Configuration Manager

**Connect**

- SM2\SSRS
- Service Account
- Web Service URL
- Database
- Web Portal URL**

### Web Portal URL

Configure a URL to access Web Portal. Click Advanced to define multiple URLs, or to specify additional parameters on the URL.

**Web Portal Site Identification**

Virtual Directory:	<input type="text" value="Reports"/>
URLs:	<a href="http://SM2:80/Reports">http://SM2:80/Reports</a>

[Advanced](#)

Thanks

**Ram Lan**  
30<sup>th</sup> Dec 2019