

Installing DataWarehouse Point

In this post, I will show you how to install and configure Datawarehouse point within CB1906. In order to install this role, make sure you have created a database for Datawarehouse in the SQL Server. I am using a single server role and, I have installed 2 databases (CM_TOR and CM_TOR_DW)

Click Administration – Sites – Add Site System roles

The screenshot shows the 'Administration' console with the 'Sites' configuration page selected. The left-hand navigation pane lists various administrative tasks, with 'Sites' highlighted under 'Site Configuration'. The main pane displays a table of existing sites.

Icon	Name	Type	Server Name	State	Site Code	Parent Site Code
	TOR - Toronto Headqua...	Primary site	CB.RAMLAN.CA	Site Active	TOR	

The screenshot shows the 'Add Site System Roles Wizard' in the 'General' tab. The wizard guides the user through selecting a server and configuring site system roles.

Select a server to use as a site system

Name (example: server1.corp.contoso.com):
CB.RAMLAN.CA Browse...

Site code: TOR - Toronto Headquarters Site

☐ Specify an FQDN for this site system for use on the Internet
Internet FQDN (example: intemetsrv2.contoso.com):

☐ Require the site server to initiate connections to this site system
After the installation of the site system roles, the site server initiates all connections to the site system server by using the Site System Installation Account.

Site System Installation Account
☐ Use the site server's computer account to install this site system
☒ Use another account for installing this site system
RAMLAN\Administrator Set...

Active Directory membership
Active Directory forest: RAMLAN.CA
Active Directory domain: RAMLAN.CA

< Previous Next > Summary Cancel



Proxy

General

Proxy

System Role Selection

Summary

Progress

Completion

Specify Internet proxy server

You can specify a proxy server for this site system server to use when it connects to the Internet.

☐ Use a proxy server when synchronizing information from the Internet

Site System Proxy Server Account

The Site System Proxy Server Account provides authenticated access to the proxy server when this site system server connects to a location on the Internet.

Proxy server name:

Port:

☐ Use credentials to connect to the proxy server

Set...

< Previous

Next >

Summary

Cancel



System Role Selection

General

Proxy

System Role Selection

Data Warehouse service p

Data Warehouse service p

Summary

Progress

Completion

Specify roles for this server

Available roles:

- ☐ Certificate registration point
- ☐ Cloud management gateway connection point
- ☒ Data Warehouse service point
- ☐ Enrollment point
- ☐ Enrollment proxy point

Description:

A Data Warehouse service point synchronizes data from Configuration Manager database to Data Warehouse database.

< Previous

Next >

Summary

Cancel



Data Warehouse service point settings

General

Proxy

System Role Selection

Data Warehouse service p

Data Warehouse service p

Summary

Progress

Completion

Specify Data Warehouse service point settings

Use the data warehouse service point to periodically copy data from your Configuration Manager site database to another database for long-term storage and trend analysis.

Configuration Manager data warehouse database connection settings

Specify the SQL Server information about the Configuration Manager data warehouse you will use to store data for the long-term.

The site system installation account, or local system account of the site server computer must have dbo access to the destination (data warehouse) database in order to be able to create tables and views.

SQL Server fully qualified domain name:	<input type="text" value="CB.RAMLAN.CA"/> <small>Example: sqlserver.contoso.com</small>
SQL Server instance name, if applicable:	<input type="text" value=""/> <small>Example: Instance Name</small>
Database name:	<input type="text" value="CM_TOR_DW"/> <small>Example: CM_XYZ_DW</small>
SQL Server port used for connection:	<input type="text" value="1433"/>

Data Warehouse service point Account

Specify the credentials that SQL Reporting Services will use when connecting to the Data Warehouse database.

User name:	<input type="text" value="RAMLAN\Administrator"/> <input type="button" value="Set..."/>
------------	--

< Previous

Next >

Summary

Cancel

Click Select Tables



Data Warehouse service point schedule

General

Proxy

System Role Selection

Data Warehouse service p

Data Warehouse service p

Summary

Progress

Completion

Specify Data Warehouse service point schedule

Data Synchronization custom setting

Configuration Manager site database tables to synchronize:

Manually start synchronization to data warehouse database.

Synchronization schedule

Start time:

Recurrence pattern

<input type="radio"/> Daily	Recur every: <input type="text" value="1"/> weeks on:
<input checked="" type="radio"/> Weekly	<input checked="" type="radio"/> Sunday <input type="radio"/> Thursday
	<input type="radio"/> Monday <input type="radio"/> Friday
	<input type="radio"/> Tuesday <input type="radio"/> Saturday
	<input type="radio"/> Wednesday

< Previous

Next >

Summary

Cancel

Here you have the option to select any additional tables for reporting.

Database tables

Select the tables to synchronize to the Data Warehouse database.

Filter...

Table name	Group name
<input type="checkbox"/> _394_CONTROLLER_DATA	Hardware Inventory
<input type="checkbox"/> ActiveSync_Service_DATA	Hierarchy Information
<input checked="" type="checkbox"/> Add_Remove_Programs_64_DATA	Hardware Inventory
<input checked="" type="checkbox"/> Add_Remove_Programs_DATA	Hardware Inventory
<input type="checkbox"/> ADVANCED_CLIENT_PORTS_DATA	Hardware Inventory
<input type="checkbox"/> Agents	Hierarchy Information
<input type="checkbox"/> AI_MVLS	Hardware Inventory
<input type="checkbox"/> AI_NON_MS_LICENSE	Hardware Inventory
<input type="checkbox"/> AI_UploadQueue	Hardware Inventory
<input type="checkbox"/> AIProxy	Hardware Inventory
<input type="checkbox"/> Alert	Monitoring
<input type="checkbox"/> AlertClass	Monitoring
<input type="checkbox"/> AlertEvents	Monitoring
<input type="checkbox"/> AllowOrDenyListViolationData	Hierarchy Information
<input type="checkbox"/> AMT_AGENT_DATA	Hardware Inventory
<input type="checkbox"/> AMT_MachineProperties	Hierarchy Information
<input type="checkbox"/> AMT_Profile	Hierarchy Information
<input type="checkbox"/> ApplicationIdToNameMap	Device Management
<input type="checkbox"/> APPV_CLIENT_APPLICATION_DATA	Hardware Inventory
<input type="checkbox"/> APPV_CLIENT_PACKAGE_DATA	Hardware Inventory
<input type="checkbox"/> ATP_AdvancedThreatProtectionHealthStatus	Security
<input type="checkbox"/> AttributeMap	Other
<input type="checkbox"/> AUTOSTART_SOFTWARE_DATA	Hardware Inventory

OK Cancel

Add Site System Roles Wizard



Summary

General

Proxy

System Role Selection

Data Warehouse service p

Data Warehouse service p

Summary

Progress

Completion

Confirm the settings

Details:

Create a site system server with the following settings:

- Site System Name
 - CB.RAMLAN.CA
- Settings
 - Public FQDN: Not specified
 - Installation Account: RAMLAN\Administrator
- Roles
 - Data Warehouse service point
- Proxy Settings
 - Proxy will not be enabled

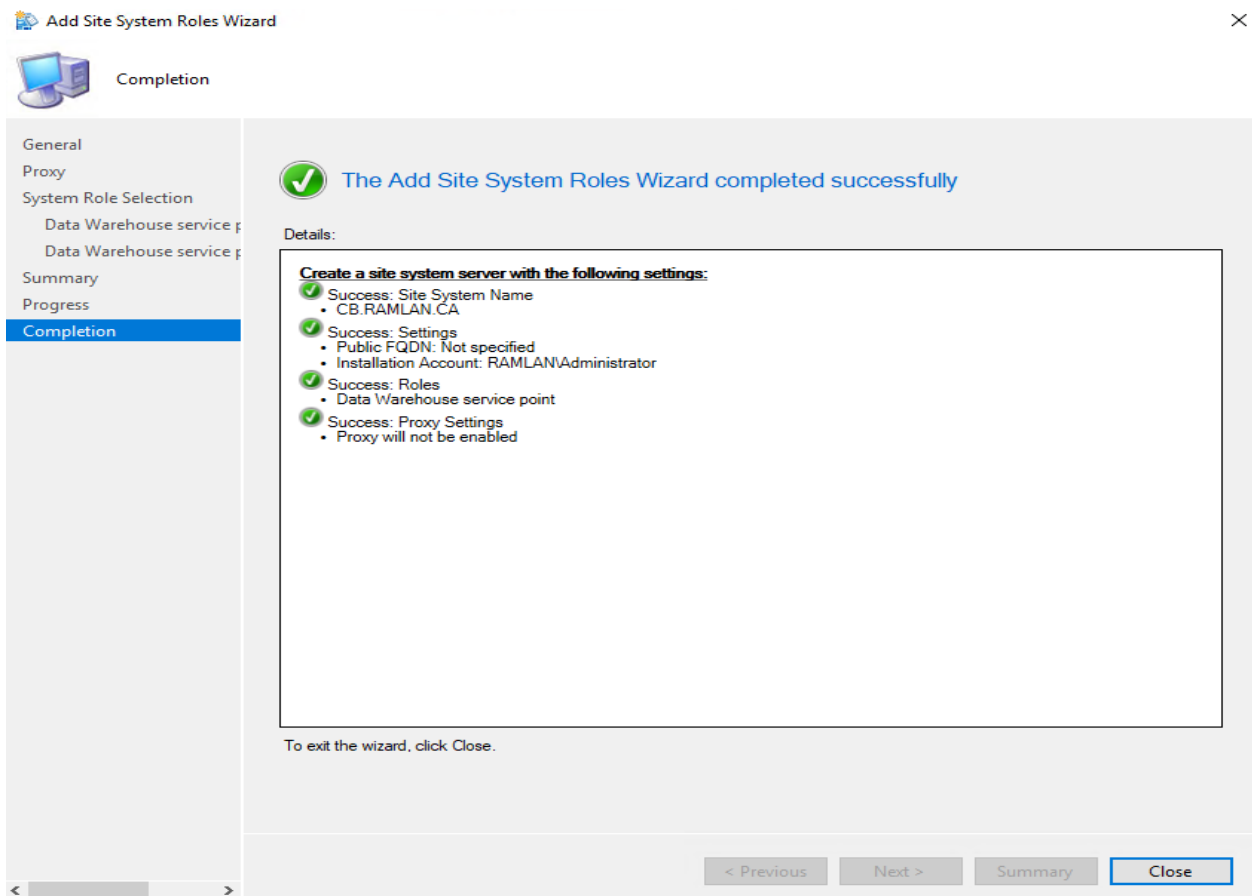
To change these settings, click Previous. To apply the settings, click Next.

< Previous

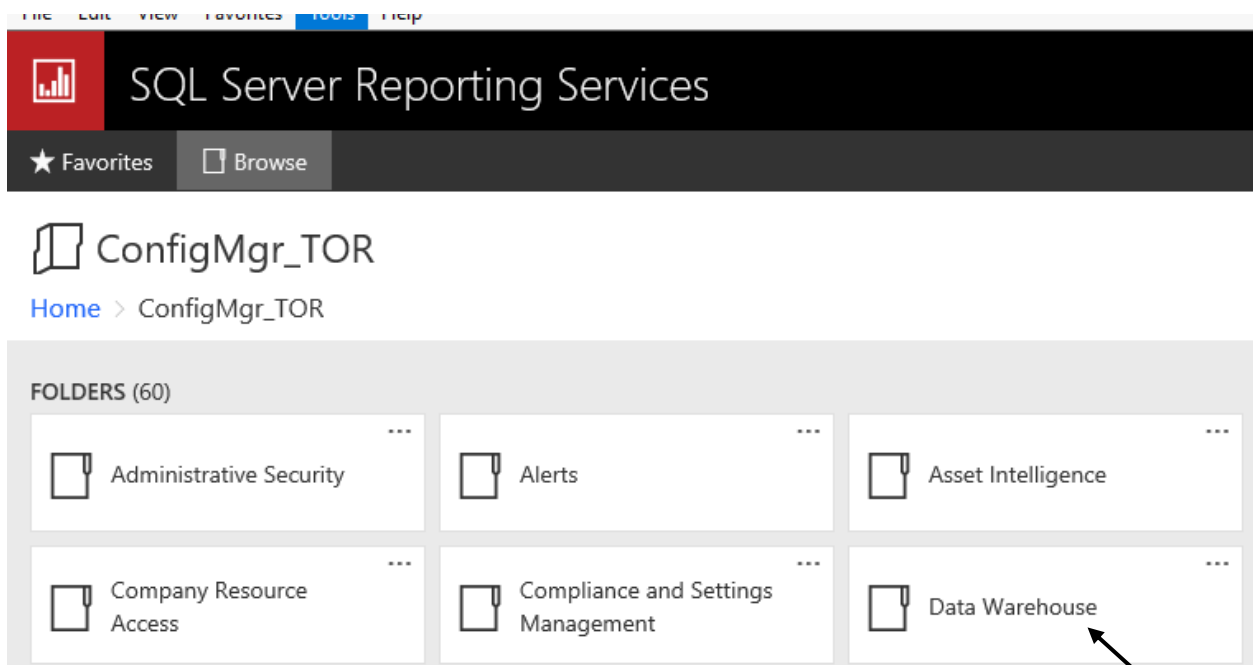
Next >

Summary

Cancel



After some time, you will see Datawarehouse report listed within the Console and Reporting Services.



Monitoring

Navigation Index

- Alerts:** View and manage alerts.
- Reporting:** View and manage reports and report subscriptions, and configure report options.
- System Status:** View and manage site status, component status, conflicting records, and status message queries.
- Phased Deployments:** View information about the status of phased deployments.
- Script Status:** View information about the status of PowerShell scripts run on devices and collections.
- Database Replication:** View site-to-site link status.
- Software Update Point Synchronization Status:** View software update point synchronization status across the hierarchy.
- Updates and Servicing Status:** View the status of Configuration Manager updates you've installed in your hierarchy.

Data Warehouse 7 items

Icon	Name	Category	Date Modified
	Application deployment - Historical	Data Warehouse	05-Oct-2019 5:07...
	Endpoint Protection and software updates compliance - Historical	Data Warehouse	05-Oct-2019 5:07...
	General hardware inventory - Historical	Data Warehouse	05-Oct-2019 5:07...
	General software inventory - Historical	Data Warehouse	05-Oct-2019 5:07...
	Infrastructure health overview - Historical	Data Warehouse	05-Oct-2019 5:07...
	List of malware detected - Historical	Data Warehouse	05-Oct-2019 5:07...
	Software distribution summary - Historical	Data Warehouse	05-Oct-2019 5:07...

This concludes installing Datawarehouse role on CB1906.

Thanks!

Ram Lan

6th Oct 2019