

## SQL Server Native Client Pre Req warning during CB1906 Upgrade

If you see below error during CB1906 upgrade it is because you are running lower version of SQL Native client. Below is the screen shot.

Detailed status for the Configuration Manager 1906 installation on the site TOR:

[View Post-Setup Configuration tasks](#)

Name	Status	Last Update Time
Download	Completed	27-Jul-2019 12:13:56 AM
Replication	Completed	27-Jul-2019 12:20:26 AM
Prerequisite Check	Completed with ...	27-Jul-2019 12:21:13 AM
Installation	Completed	27-Jul-2019 12:47:00 AM
Post Installation	Completed	29-Jul-2019 8:17:10 AM

Name	Status	Last Update Time	Description
SQL availability group replicas on default instance	Completed	27-Jul-2019 12:21:02 AM	Checking availabi
SQL Index Create Memory option	Completed	27-Jul-2019 12:21:02 AM	Checks if default v
SQL Server supported version	Completed	27-Jul-2019 12:21:13 AM	Starting with versic
SQL availability group replicas must be healthy	Completed	27-Jul-2019 12:21:02 AM	Checking availabi
SQL availability group replicas must all have the same se...	Completed	27-Jul-2019 12:21:02 AM	Checking availabi
Software Update Points using a Load Balancer (NLB/HL...	Completed	27-Jul-2019 12:21:10 AM	Starting with versic
Upgrade Assessment Toolkit is no longer supported.	Completed	27-Jul-2019 12:21:10 AM	Starting with versic
Unsupported site server operating system version for Set...	Completed	27-Jul-2019 12:21:02 AM	Verifies that the sit
Unsupported operating system version for site system role	Completed	27-Jul-2019 12:21:02 AM	Verifies that the sit
Using HTTP management point with cloud management ...	Completed	27-Jul-2019 12:21:11 AM	Checking if HTTP
SQL Server Always On availability groups	Completed	27-Jul-2019 12:21:11 AM	Checks if the spec
Max Text Repl Size for SQL Server Always On availabil...	Completed	27-Jul-2019 12:21:11 AM	Checks if the max :
Pending configuration item policy updates	Completed	27-Jul-2019 12:21:13 AM	Checks if there are
SQL Server Configuration for site upgrade	Completed	27-Jul-2019 12:21:13 AM	Checks if the spec
<b>SQL Server Native Client version</b>	Completed with ...	27-Jul-2019 12:21:02 AM	Verifies that the ve
Potential SQL server performance issue caused by chan...	Completed	27-Jul-2019 12:21:13 AM	The site database

Description:

[Completed with warning]:Verifies that the version of Microsoft SQL Server Native Client installed on the site server meets the minimum requirements to enable TLS 1.2 support. <https://go.microsoft.com/fwlink/?linkid=2026746>

OK Cancel

Microsoft SQL Server 2012 Native Client      Microsoft Corporation      06-Jan-2019      9.71 MB      11.3.6540.0

ODBC Drivers that are installed on your system:

Name	Version	Company	File	Date
Backup Exec Catalog Driver	Not marked	Not marked	BECATDRV.DLL	
ODBC Driver 13 for SQL Server	2017.140.3192.02	Microsoft C...	MSODBCSQL13.DLL	15-Jun-2019
SQL Server	10.00.17763.01	Microsoft C...	SQLSRV32.DLL	15-Sep-2018
<b>SQL Server Native Client 11.0</b>	2011.110.6540.00	Microsoft C...	SQLNCLI11.DLL	24-Jun-2016
SQL Server Native Client RDA 11.0	2011.110.5069.66	Microsoft C...	SQLNCLIRDA11.DLL	22-Aug-2017

An ODBC driver allows ODBC-enabled programs to get information from ODBC data sources. To install new drivers, use the driver's setup program.

OK Cancel Apply Help

It is very simple to fix the warning – visit below link to download latest version and install.

<https://www.microsoft.com/en-us/download/details.aspx?id=50402>

Microsoft® SQL Server® 2012 Native Client - QFE

*Important!* Selecting a language below will dynamically change the complete page content to that language.

Select Language:

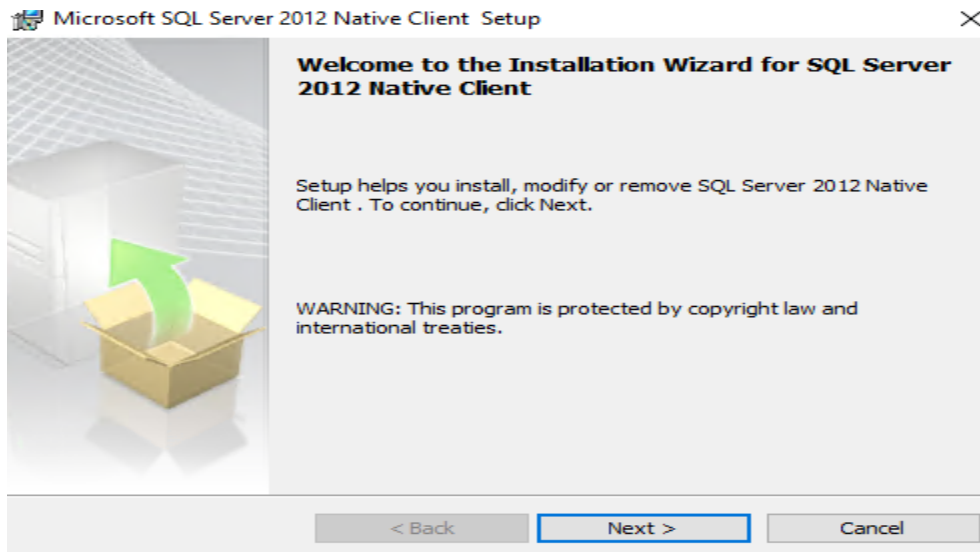
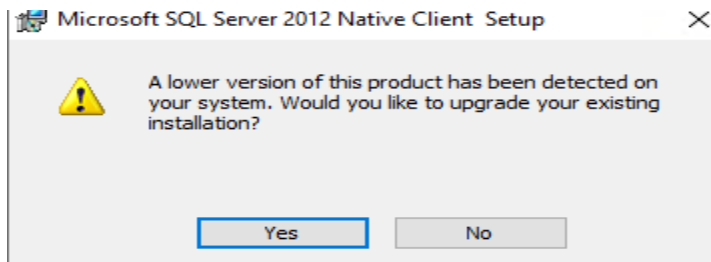
Latest servicing update available for the Microsoft® SQL Server® 2012 Native Client

⊖ Details

**Note:** There are multiple files available for this download. Once you click on the "Download" button, you will be prompted to select the files you need.

<b>Version:</b> 11.0.7001.0	<b>Date Published:</b> 1/19/2018
<b>File Name:</b> ENU\x64\sqlncli.msi ENU\x86\sqlncli.msi	<b>File Size:</b> 4.8 MB 3.0 MB

Run the installer. You will get below warning – Click Yes





### License Agreement

Please read the following license agreement carefully.



#### MICROSOFT SOFTWARE LICENSE TERMS

#### MICROSOFT SQL SERVER 2012 NATIVE CLIENT

These license terms are an agreement between Microsoft Corporation (or based on where you live, one of its affiliates) and you. Please read them. They apply to the software named above, which includes the media on which you received it, if any. The terms also apply to any Microsoft

- updates,

- I accept the terms in the license agreement  
 I do not accept the terms in the license agreement

< Back

Next >

Cancel



### Feature Selection

Select the program features you would like to install.



Click an icon in the following list to change how a feature is installed.

	<b>Client Components</b>
	SQL Server Native Client SDK

#### Feature description

Microsoft SQL Server Native Client

#### Installation path

Browse...

Disk Cost...

< Back

Next >

Cancel

Microsoft SQL Server 2012 Native Client Setup



### Ready to Install the Program

Setup is ready to begin installation.



Click Install to begin the installation.

If you want to review or change any of your installation settings, click Back. Click Cancel to exit Setup.

< Back

Install

Cancel

Microsoft SQL Server 2012 Native Client Setup



### Completing the SQL Server 2012 Native Client installation

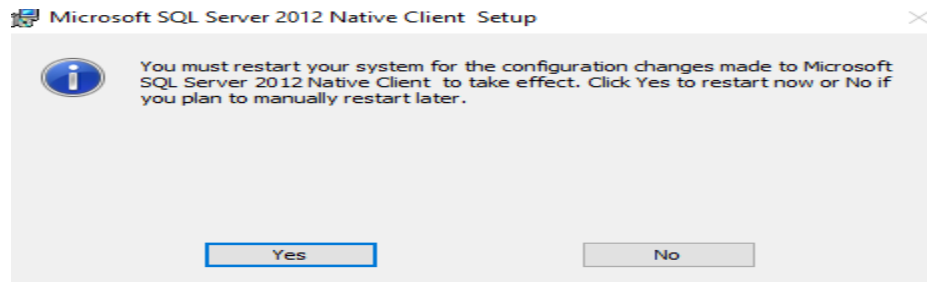
Setup has installed SQL Server 2012 Native Client successfully. Click Finish to exit.



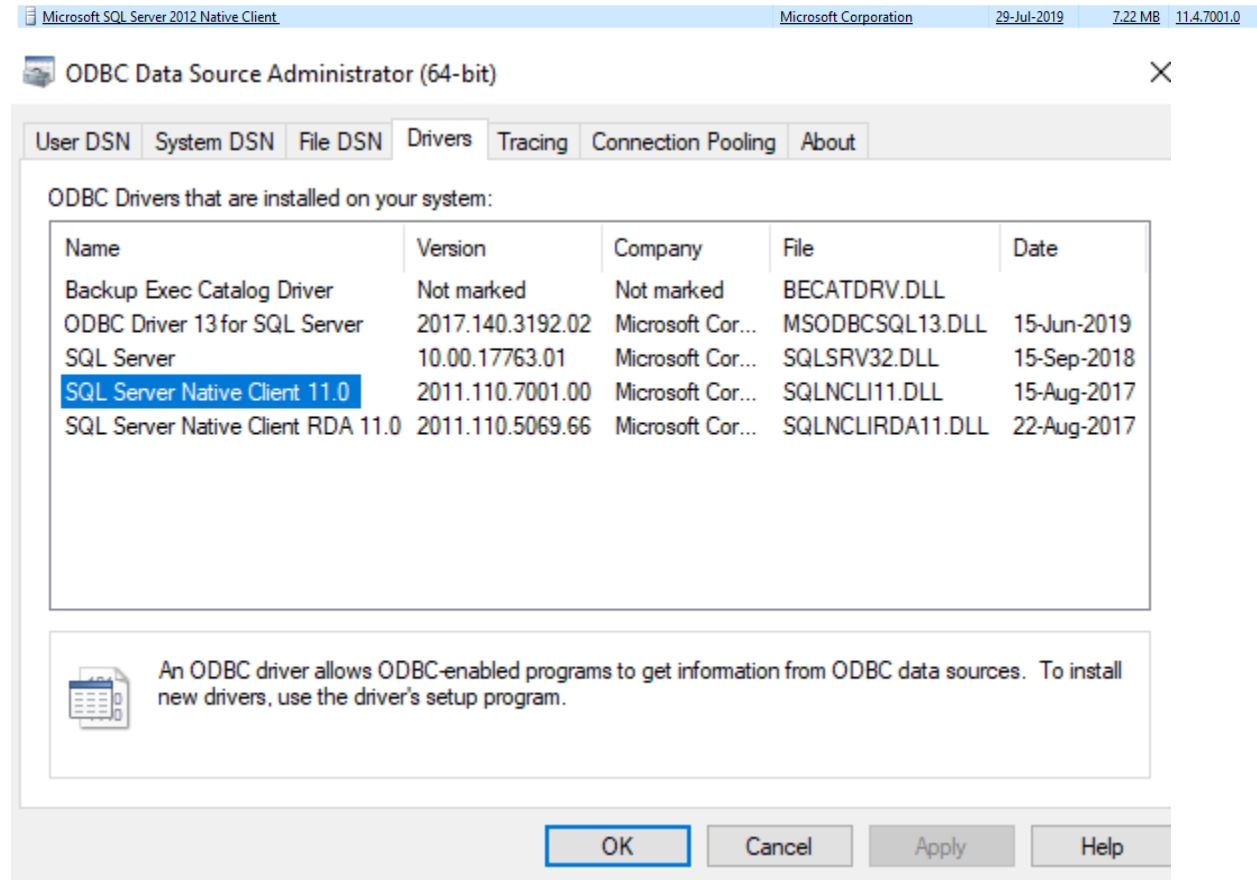
< Back

Finish

Cancel



Check the version again to make sure it is the latest version.



So, when you perform next current branch upgrade there should be no warning and everything should go smoothly.

Thanks

**Ram Lan**

**29<sup>th</sup> Jul 2019**