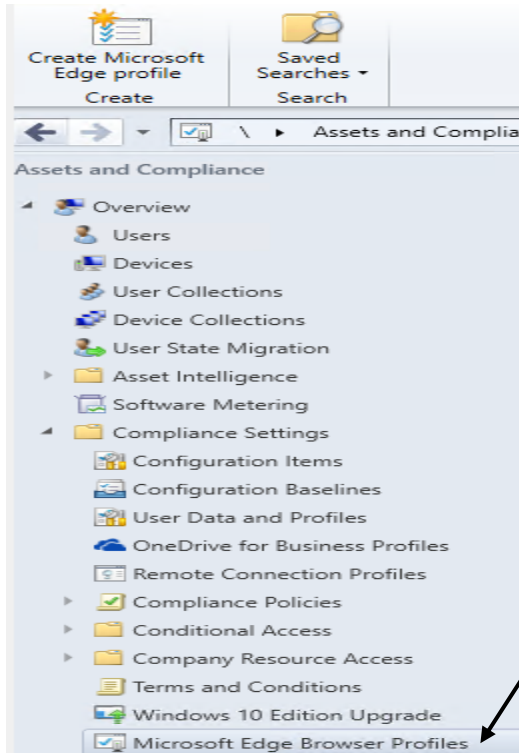


Creating Microsoft Edge Browser Profile

In this post, I will show you how to create compliance policy for Edge Browser.

Open Console – Asset Intelligence



Create Microsoft Edge Browser Policy

General

Specify general information about this Microsoft Edge Browser profile

Create a compliance settings policy to configure several Microsoft Edge web browser settings for Windows 10 devices.

Name:
Edge Browser Profile for Win 10 workstations

Description:
This will be deployed to Win 10 w/s across the network. Edge browser will be the default.

< Previous Next > Summary Cancel



General Settings

General

General Settings

SmartScreen Settings

Supported Platforms

Summary

Progress

Completion

Configure Microsoft Edge Browser settings

Set Microsoft Edge Browser as default:	Configured ▾
Allow address bar drop down:	Allowed ▾
Allow sync favorites between Microsoft browsers:	Allowed ▾
Allow clear browsing data on exit:	Allowed ▾
Allow Do Not Track headers:	Allowed ▾
Allow autofill:	Allowed ▾
Allow cookies:	Allowed ▾
Allow pop-up blocker:	Allowed ▾
Allow search suggestions in address bar:	Allowed ▾
Allow send intranet traffic to Internet Explorer:	Not Configured ▾
Allow password manager:	Not Configured ▾
Allow Developer Tools:	Allowed ▾
Allow extensions:	Allowed ▾

< Previous

Next >

Summary

Cancel



SmartScreen Settings

General

General Settings

SmartScreen Settings

Supported Platforms

Summary

Progress

Completion

Configure Windows Defender SmartScreen settings

Allow SmartScreen:	Allowed ▾
Users can override SmartScreen prompt for sites:	Allowed ▾
Users can override SmartScreen prompt for files:	Allowed ▾

< Previous

Next >

Summary

Cancel



Supported Platforms

General
General Settings
SmartScreen Settings
Supported Platforms
Summary
Progress
Completion

Select the platforms that will be provisioned with this Microsoft Edge browser profile

☐ Select all

- ☒ Windows 10
 - ☒ All Windows 10 (64-bit)
 - ☐ All Windows 10 (32-bit)

< Previous

Next >

Summary

Cancel



Summary

General
General Settings
SmartScreen Settings
Supported Platforms
Summary
Progress
Completion

Confirm the settings

Details:

- Microsoft Edge Browser:
- Name: Edge Browser Profile for Win 10 workstations
 - Description: This will be deployed to Win 10 w/s across the network. Edge browser will be the default.
- Microsoft Edge settings details:
- Microsoft Edge as default browser: Configured
 - Allow address bar drop down: Allowed
 - Sync favorites between IE and Microsoft Edge: Allowed
 - Clear browsing data on exit: Allowed
 - Do Not Track headers are allowed: Allowed
 - Allow autofill: Allowed
 - Allow cookies: Allowed
 - Allow pop-up blocker: Allowed
 - Allow search suggestions in address bar: Allowed
 - Allow send intranet traffic to Internet Explorer: Allowed
 - Allow password manager: Allowed
 - Allow Developer Tools: Allowed
 - Allow extensions: Allowed
 - Allow SmartScreen: Allowed
 - Users can override SmartScreen prompt for sites: Allowed
 - Users can override SmartScreen prompt for files: Allowed

Microsoft Edge settings details:

- The following platform versions are supported:
- All Windows 10 (64-bit)

To change these settings, click Previous. To apply the settings, click Next.

< Previous

Next >

Summary

Cancel



Completion

General

General Settings

SmartScreen Settings

Supported Platforms

Summary

Progress

Completion



The Create Microsoft Edge Browser Policy completed successfully

Details:

Microsoft Edge Browser:

- Name: Edge Browser Profile for Win 10 workstations
- Description: This will be deployed to Win 10 w/s across the network. Edge browser will be the default.

Microsoft Edge settings details:

- Microsoft Edge as default browser: Configured
- Allow address bar drop down: Allowed
- Sync favorites between IE and Microsoft Edge: Allowed
- Clear browsing data on exit: Allowed
- Do Not Track headers are allowed: Allowed
- Allow autofill: Allowed
- Allow cookies: Allowed
- Allow pop-up blocker: Allowed
- Allow search suggestions in address bar: Allowed
- Allow send intranet traffic to Internet Explorer: Allowed
- Allow password manager: Allowed
- Allow Developer Tools: Allowed
- Allow extensions: Allowed
- Allow SmartScreen: Allowed
- Users can override SmartScreen prompt for sites: Allowed
- Users can override SmartScreen prompt for files: Allowed

Microsoft Edge settings details:

The following platform versions are supported:

To exit the wizard, click Close.

< Previous

Next >

Summary

Close

Assets and Compliance > Overview > Compliance Settings > Microsoft Edge Browser Profiles				
Assets and Compliance				
Microsoft Edge Browser Profiles 1 items				
Icon	Name	Revision	Deployed	Date Modified
	Edge Browser Profile for Win 10 workstations	1	No	21-Jun-2019 1:41 PM

Now we can deploy to Win 10 collection.

Create Microsoft Edge profile

Create

Saved Searches

Search

Copy

Microsoft Edge Browser Profile

Refresh

Delete

View Xml Definition

Deploy

Deployment

Properties

Properties

Assets and Compliance

Overview

Compliance Settings

Microsoft Edge Browser Profiles

Assets and Compliance

Overview

Users

Microsoft Edge Browser Profiles 1 items

Icon	Name	Revision	Deployed	Date Modified
	Edge Browser Profile for Win 10 workstations	1	Yes	21-Jun-2019 1:41 PM

Deploy Microsoft Edge Browser Profile

Microsoft Edge Browser profile name:

Collection:

☒ Generate an alert:
 When compliance is below (%):
 Date and time:
☒ Generate System Center Operations Manager alert

Schedule
 Specify the compliance evaluation schedule for this Microsoft Edge profile.

☒ Simple schedule
 Run every:
☐ Custom schedule

Assets and Compliance > Overview > Compliance Settings > Microsoft Edge Browser Profiles

Microsoft Edge Browser Profiles 1 items				
Icon	Name	Revision	Deployed	Date Modified
	Edge Browser Profile for Win 10 workstations	1	Yes	21-Jun-2019 1:41 PM

Edge Browser Profile for Win 10 workstations		Compliance Statistics
General		
Revision:	1	Compliance Count: 0
Created By:	RAMLAN\Administrator	Failure Count: 0
Date Created:	21-Jun-2019 1:41 PM	Noncompliance Count: 0
Date Modified:	21-Jun-2019 1:41 PM	
Modified By:	RAMLAN\Administrator	
Site Code:	TOR	
Deployed:	Yes	

Now we can check compliance statistics after the policy is deployed as per the schedule we set out in the policy.

Thanks

Ram Lan

21st Jun 2019