

Upgrading to MDT 8456 Zero Touch (integrated with ConfigMgr Current Branch 1810)

In this post, I will show you how to upgrade and complete the installation of MDT 8456 on Current Branch 1810.

I was able to download MDT 8456 from here



<https://www.microsoft.com/en-us/download/details.aspx?id=57775>

This is ADK Version history. In order to install MDT 8456, you should have installed ADK 1809 version.

WINDOWS 10 ADK VERSION HISTORY

Windows ADK for Windows 10 v1809	10.1.17763	September, 2018
Windows ADK for Windows 10 v1803	10.1.17134	April, 2018
Windows ADK for Windows 10 v1709	10.1.16299	October, 2017
Windows ADK for Windows 10 v1703	10.1.15063	March, 2017
Windows ADK for Windows 10 v1607	10.1.14393.0	Sept. 2016
Windows ADK for Windows 10 v1511	10.1.10586.0	Oct. 2015
Windows ADK for Windows 10 RTM	10.0.26624.0	July, 2015
Windows ADK for Windows 10	10.0.10240.0	July, 2015


Here is screen shot from my Current Branch 1810 Server.

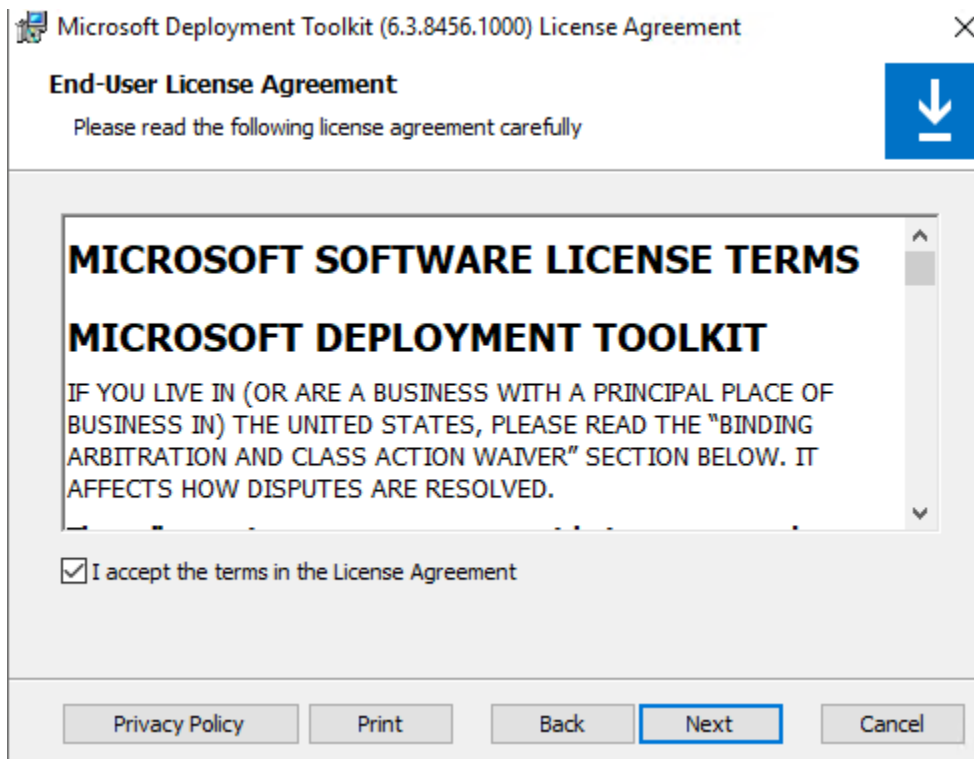
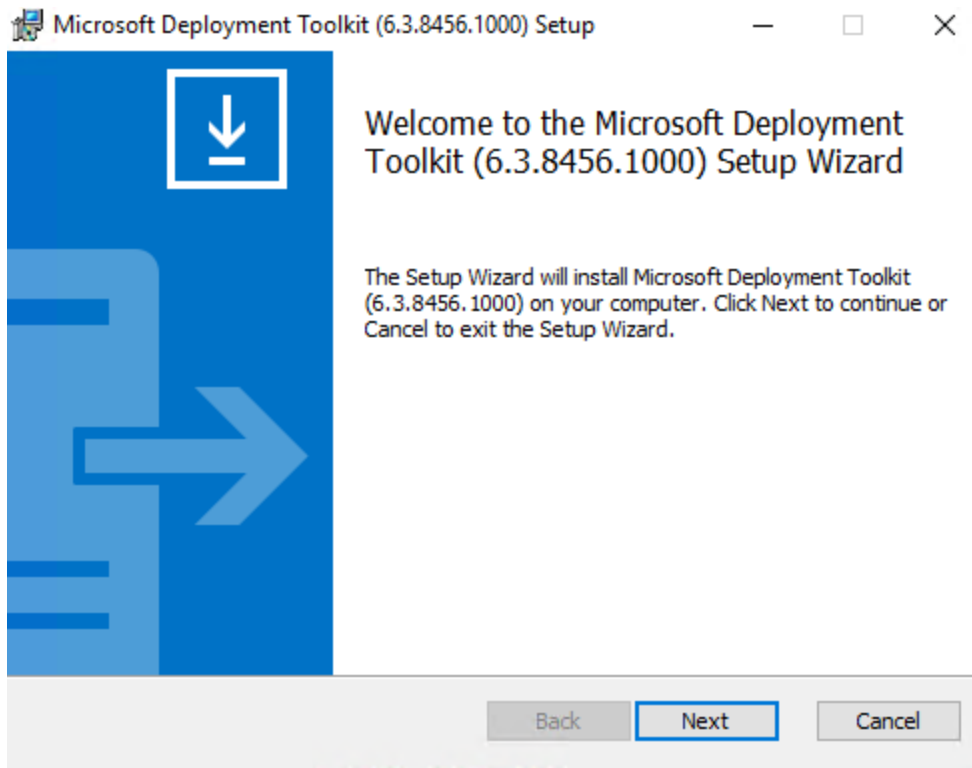
 Windows Assessment and Deployment Kit - Windows 10	Microsoft Corporation	06-Jan-2019	813 MB	10.1.17763.1
 Windows Assessment and Deployment Kit Windows Preinstallation Environment Add-ons - Windows 10	Microsoft Corporation	06-Jan-2019	5.72 GB	10.1.17763.1

So, I am good. If you want to know what version of MDT is installed. Here is the screen shot. I am running 8450 version. So, I can proceed with the upgrade without any issue.

 Microsoft Deployment Toolkit (6.3.8450.1000)	Microsoft Corporation	19-Jan-2019	68.0 MB	6.3.8450.1000
--	-----------------------	-------------	---------	---------------

To be on the safe side close the console and run the setup file for MDT 8456.

CB > Downloads				
Name	Size	Date modified	Type	
 MDT x64 build 8456.msi	21,092 KB	28-Jan-2019 5:29 P...	Windows Installer ...	

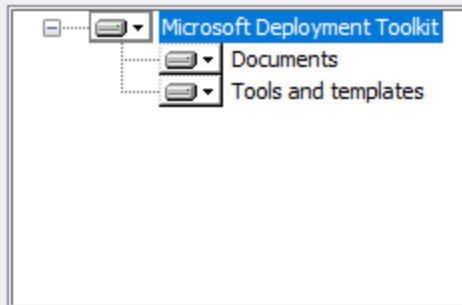


Custom Setup

Select the way you want features to be installed.



Click the icons in the tree below to change the way features will be installed.



The complete solution.

This feature requires 1KB on your hard drive. It has 2 of 2 subfeatures selected. The subfeatures require 8981KB on your hard drive.

Location: C:\Program Files\Microsoft Deployment Toolkit\

Browse...

Reset

Disk Usage

Back

Next

Cancel

Customer Experience Improvement Program

We invite you to join our Customer Experience Improvement Program to improve the quality, reliability and performance of Microsoft software and services.

If you accept, we will collect anonymous information about your hardware, configuration and how you use our software and services to identify trends and usage patterns.

We will NOT collect your name, address, or any other personally identifiable information. It is simple, user-friendly, and completely anonymous. You can leave this program at any time by running the Customer Feedback Options wizard.

☒ Yes, I am willing to participate anonymously in the Customer Experience Improvement Program. (Recommended)

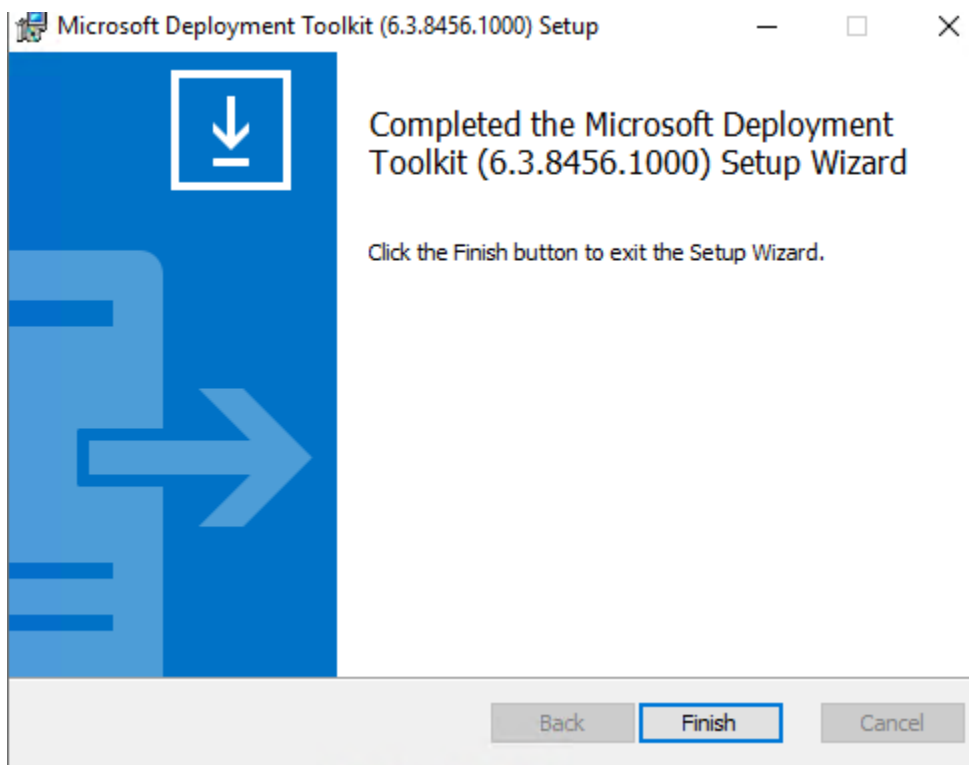
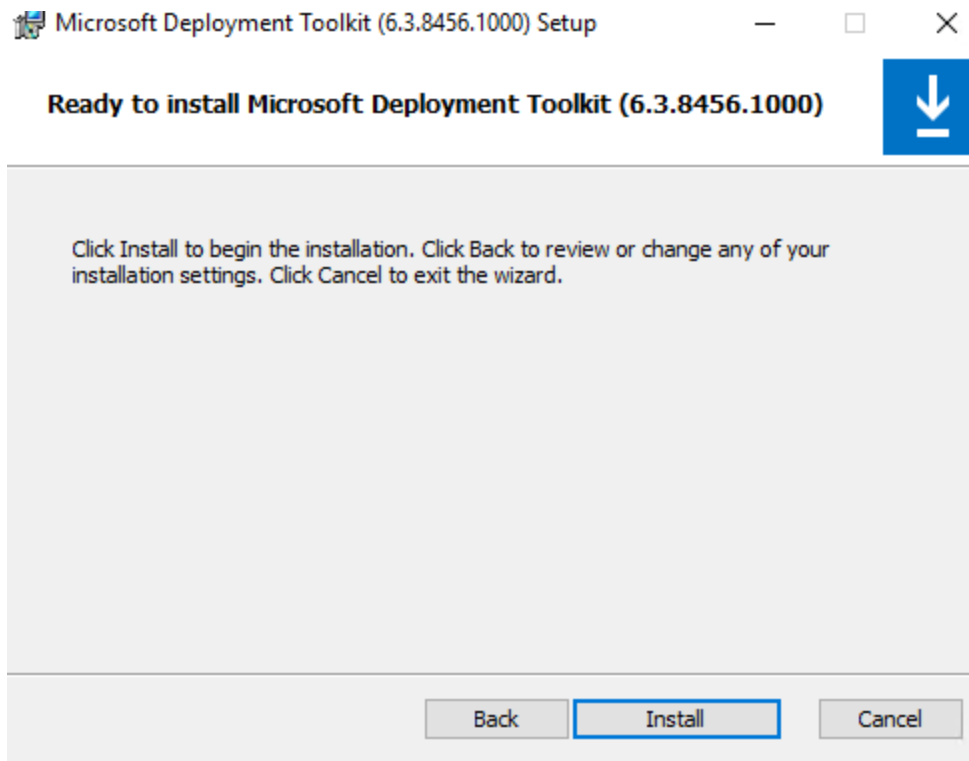
☐ I don't want to join the program at this time.

[Read more about the Customer Experience Improvement Program](#)

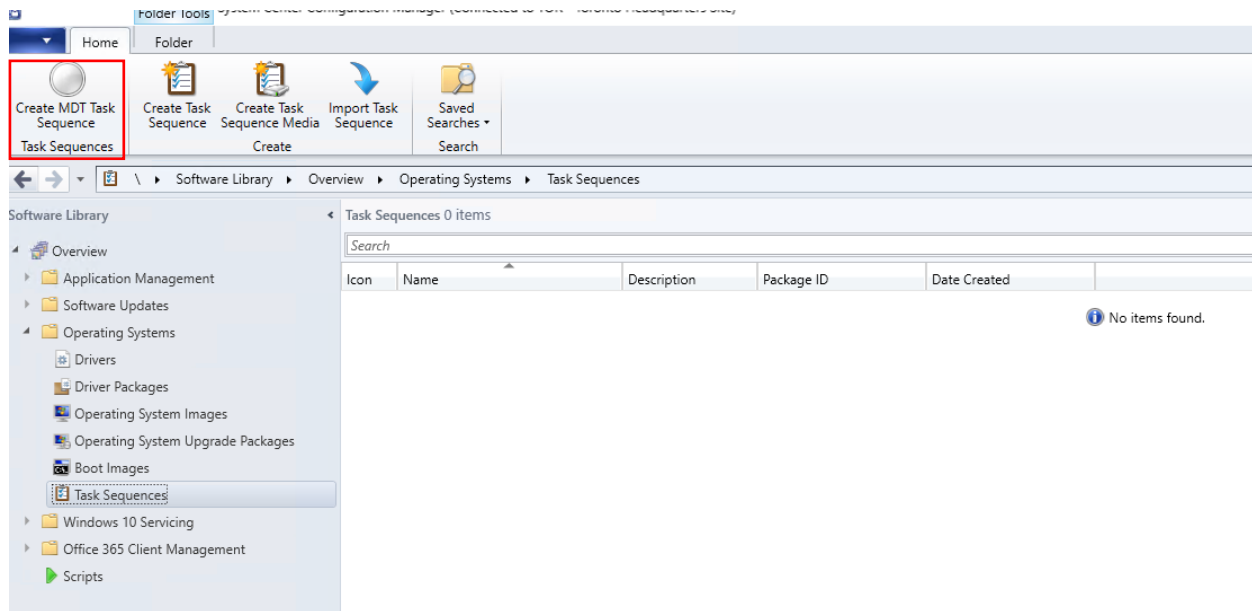
Back

Next

Cancel



I don't have any task sequence configured. So, I am going to create a new task sequence for creating MDT package that we will use going forward.



Create MDT Task Sequence



Choose Template

Choose Template

General

Details

Capture Settings

Boot Image

General Settings

Options

Components

Customization

MDT Package

MDT Details

OS Image

Image Details

Install Source

OS Image Index

Deployment Method

Client Package

USMT Package

USMT Details

Settings Package

Settings Details

Sysprep Package

Sysprep Details

Summary

Progress

Confirmation

The following SCCM task sequence templates are available. Select the one you would like to use as a starting point.

Client Task Sequence

Client Task Sequence

Client Replace Task Sequence

Microsoft Deployment Custom Task Sequence

Server Task Sequence

User Driven Installation Replace Task Sequence

Previous

Next

Cancel

**General**

Choose Template

General

Details

Capture Settings

Boot Image

General Settings

Options

Components

Customization

MDT Package

MDT Details

OS Image

Image Details

Install Source

OS Image Index

Deployment Method

Client Package

USMT Package

USMT Details

Settings Package

Settings Details

Sysprep Package

Sysprep Details

Summary

Progress

Confirmation

Specify the task sequence name and comments for this new task sequence.

Task sequence name:

MDT BOOT 8456

Task sequence comments:

This dummy task sequence is to create MDT BOOT package for future user.

Previous

Next

Cancel

**Details**

Choose Template

General

Details

Capture Settings

Boot Image

General Settings

Options

Components

Customization

MDT Package

MDT Details

OS Image

Image Details

Install Source

OS Image Index

Deployment Method

Client Package

USMT Package

USMT Details

Settings Package

Settings Details

Sysprep Package

Sysprep Details

Summary

Progress

Confirmation

Specify the task sequence details.

Join Workgroup or Domain

☒ Join a workgroup

Workgroup: WORKGROUP

☐ Join a domain:

Domain:

Account:

Set...

Windows Settings

User name: administrator

Organization name: RAMLAN INC

Product key:

Administrator Account

☒ Randomly generate the local administrator password and disable the account (recommended)☐ Enable the account and specify the local administrator password

Password:

Confirm password:

Previous

Next

Cancel



Capture Settings

Choose Template

General

Details

Capture Settings

Boot Image

General Settings

Options

Components

Customization

MDT Package

MDT Details

OS Image

Image Details

Install Source

OS Image Index

Deployment Method

Client Package

USMT Package

USMT Details

Settings Package

Settings Details

Sysprep Package

Sysprep Details

Summary

Progress

Confirmation

This task sequence can be used to capture a custom WIM image that can then be imported into ConfigMgr and used for subsequent deployments. In order to do this, a capture destination and account must be specified.

☐ This task sequence will never be used to capture an image.

☒ This task sequence may be used to capture an image.

Capture destination: \\cb\Sources\OSD\MDT8456\Capture\capture.wim

Capture account: ramlan\administrator

Set...

Previous

Next

Cancel



Boot Image

Choose Template

General

Details

Capture Settings

Boot Image

General Settings

Options

Components

Customization

MDT Package

MDT Details

OS Image

Image Details

Install Source

OS Image Index

Deployment Method

Client Package

USMT Package

USMT Details

Settings Package

Settings Details

Sysprep Package

Sysprep Details

Summary

Progress

Confirmation

Specify a boot image package to use.

☐ Specify an existing boot image package

Browse...

☒ Create a new boot image package

Package source folder to be created (UNC path):

\\cb\Sources\OSD\MDT8456\Boot

Browse...

Note: Windows 10 ADK (with System Center Configuration Manager) must be installed on the current machine in order to select this option. Once created, the new package must be distributed to the needed distribution points manually before it can be used by the task sequence.

Previous

Next

Cancel



General Settings

Choose Template

General
Details
Capture Settings

Boot Image

General Settings
Options
Components
Customization

MDT Package

MDT Details

OS Image

Image Details
Install Source
OS Image Index

Deployment Method

Client Package

USMT Package

USMT Details

Settings Package

Settings Details

Sysprep Package

Sysprep Details

Summary

Progress

Confirmation

Provide a name, version and comment for the boot image.

Name:

Version:

Comments:

Previous

Next

Cancel



Options

Choose Template

General
Details
Capture Settings

Boot Image

General Settings
Options
Components
Customization

MDT Package

MDT Details

OS Image

Image Details
Install Source
OS Image Index

Deployment Method

Client Package

USMT Package

USMT Details

Settings Package

Settings Details

Sysprep Package

Sysprep Details

Summary

Progress

Confirmation

Specify the details for this new boot image.

Platform

☐ x86

☒ x64

Scratch Space

MB

Previous

Next

Cancel



Components

- Choose Template
 - General
 - Details
 - Capture Settings
- Boot Image
 - General Settings
 - Options
 - Components**
 - Customization
- MDT Package
 - MDT Details
- OS Image
 - Image Details
 - Install Source
 - OS Image Index
- Deployment Method
- Client Package
- USMT Package
 - USMT Details
- Settings Package
 - Settings Details
- Sysprep Package
 - Sysprep Details
- Summary
- Progress
- Confirmation

Specify the optional Windows PE feature packs to add to the boot image.

	Feature Name
<input checked="" type="checkbox"/>	DISM Cmdlets
<input checked="" type="checkbox"/>	IEEE 802.1x network authentication protocol
<input checked="" type="checkbox"/>	Enhanced Storage
<input checked="" type="checkbox"/>	Legacy fonts
<input type="checkbox"/>	Japanese (JA-JP) language pack
<input type="checkbox"/>	Korean (KO-KR) language pack
<input type="checkbox"/>	winpe-fontsupport-winre
<input type="checkbox"/>	Chinese (ZH-CN) language pack
<input type="checkbox"/>	Chinese (ZH-HK) language pack
<input type="checkbox"/>	Chinese (ZH-TW) language pack
<input type="checkbox"/>	winpe-gamingperipherals
<input checked="" type="checkbox"/>	Microsoft Data Access Components (MDAC/ADO) support
<input checked="" type="checkbox"/>	.NET Framework
<input checked="" type="checkbox"/>	winpe-platformid
<input checked="" type="checkbox"/>	Windows PowerShell

[Previous](#)[Next](#)[Cancel](#)

Components

- Choose Template
 - General
 - Details
 - Capture Settings
- Boot Image
 - General Settings
 - Options
 - Components**
 - Customization
- MDT Package
 - MDT Details
- OS Image
 - Image Details
 - Install Source
 - OS Image Index
- Deployment Method
- Client Package
- USMT Package
 - USMT Details
- Settings Package
 - Settings Details
- Sysprep Package
 - Sysprep Details
- Summary
- Progress
- Confirmation

Specify the optional Windows PE feature packs to add to the boot image.

	Feature Name
<input type="checkbox"/>	Japanese (JA-JP) language pack
<input type="checkbox"/>	Korean (KO-KR) language pack
<input type="checkbox"/>	winpe-fontsupport-winre
<input type="checkbox"/>	Chinese (ZH-CN) language pack
<input type="checkbox"/>	Chinese (ZH-HK) language pack
<input type="checkbox"/>	Chinese (ZH-TW) language pack
<input type="checkbox"/>	winpe-gamingperipherals
<input checked="" type="checkbox"/>	Microsoft Data Access Components (MDAC/ADO) support
<input checked="" type="checkbox"/>	.NET Framework
<input checked="" type="checkbox"/>	winpe-platformid
<input checked="" type="checkbox"/>	Windows PowerShell
<input checked="" type="checkbox"/>	Point-to-Point Protocol over Ethernet (PPPoE) support
<input checked="" type="checkbox"/>	Remote Network Driver Interface Specification (RNDIS) support
<input checked="" type="checkbox"/>	Secure Boot Cmdlets
<input checked="" type="checkbox"/>	Storage Management Cmdlets

[Previous](#)[Next](#)[Cancel](#)



Customization

Choose Template

General
Details
Capture Settings
Boot Image
General Settings
Options
Components
Customization
MDT Package
MDT Details
OS Image
Image Details
Install Source
OS Image Index
Deployment Method
Client Package
USMT Package
USMT Details
Settings Package
Settings Details
Sysprep Package
Sysprep Details
Summary
Progress
Confirmation

Specify how to customize the new boot image.

Prestart command settings

☐ Add prestart command files to enable the Deployment Wizard for this boot media.

Command line:

wscript.exe Deploy\Scripts\ZTI MediaHook.wsf

Folder for prestart command files (writable UNC path):

Browse...

☐ Add extra files to the new boot image

Path:

Browse...

☒ Use a custom background bitmap file

UNC path:

\\cb\Sources\OSD\MDT8456\For CB.jpg

Browse...

☒ Enable command support (F8)

Previous

Next

Cancel



MDT Package

Choose Template

General
Details
Capture Settings
Boot Image
General Settings
Options
Components
Customization
MDT Package
MDT Details
OS Image
Image Details
Install Source
OS Image Index
Deployment Method
Client Package
USMT Package
USMT Details
Settings Package
Settings Details
Sysprep Package
Sysprep Details
Summary
Progress
Confirmation

Specify a Microsoft Deployment Toolkit Files package to use.

☐ Specify an existing Microsoft Deployment Toolkit Files package

Browse...

☒ Create a new Microsoft Deployment Toolkit Files package

The needed Microsoft Deployment Toolkit files will be copied to a new package source folder and that will be used to create the package. These files are obtained from the Microsoft Deployment Toolkit and Windows ADK installation folders.

Package source folder to be created (UNC path):

\\cb\Sources\OSD\MDT8456 Package

Browse...

Note: Windows 10 ADK must be installed on the current machine in order to select this option. Once created, the new package must be distributed to the needed distribution points manually before it can be used by the task sequence.

Previous

Next

Cancel

**MDT Details**

- Choose Template
 - General
 - Details
 - Capture Settings
- Boot Image
 - General Settings
 - Options
 - Components
 - Customization
- MDT Package
 - MDT Details**
- OS Image
 - Image Details
 - Install Source
 - OS Image Index
- Deployment Method
- Client Package
- USMT Package
 - USMT Details
- Settings Package
 - Settings Details
- Sysprep Package
 - Sysprep Details
- Summary
- Progress
- Confirmation

Specify Microsoft Deployment Toolkit Files package properties.

Name:

Version:

Language:

Manufacturer:

Comments:

Previous

Next

Cancel

**OS Image**

- Choose Template
 - General
 - Details
 - Capture Settings
- Boot Image
 - General Settings
 - Options
 - Components
 - Customization
- MDT Package
 - MDT Details
- OS Image**
 - Image Details
 - Install Source
 - OS Image Index
- Deployment Method
- Client Package
- USMT Package
 - USMT Details
- Settings Package
 - Settings Details
- Sysprep Package
 - Sysprep Details
- Summary
- Progress
- Confirmation

An operating system can be installed using an image (WIM) file, or it can be installed from the original source media files. Specify which you would like to use.

☐ Specify an existing OS image

☐ Create a new OS image
OS image file (WIM) location (e.g. C:\install.wim):

Package source folder to be created (UNC path):

☐ Specify an existing OS install package

☒ Create a new OS install package
OS installation folder location (e.g. D:\):

Package source folder to be created (UNC path):

Previous

Next

Cancel



Install Source

<div>Choose Template</div> <div>General</div> <div>Details</div> <div>Capture Settings</div> <div>Boot Image</div> <div>General Settings</div> <div>Options</div> <div>Components</div> <div>Customization</div> <div>MDT Package</div> <div>MDT Details</div> <div>OS Image</div> <div>Image Details</div> <div>Install Source</div> <div>OS Image Index</div> <div>Deployment Method</div> <div>Client Package</div> <div>USMT Package</div> <div>USMT Details</div> <div>Settings Package</div> <div>Settings Details</div> <div>Sysprep Package</div> <div>Sysprep Details</div> <div>Summary</div> <div>Progress</div> <div>Confirmation</div>	<div>Specify new OS Image properties.</div> <div>Name: <input type="text" value="Windows Server 2019 VL"/></div> <div>Version: <input type="text" value="1.0"/></div> <div>Comments: <input type="text" value="This contains Windows Server 2019 Volume released in Jan 2019 - Version 1809 17763.292"/></div> <div><div>Previous</div><div>Next</div><div>Cancel</div></div>
--	--



OS Image Index

<div>Choose Template</div> <div>General</div> <div>Details</div> <div>Capture Settings</div> <div>Boot Image</div> <div>General Settings</div> <div>Options</div> <div>Components</div> <div>Customization</div> <div>MDT Package</div> <div>MDT Details</div> <div>OS Image</div> <div>Image Details</div> <div>Install Source</div> <div>OS Image Index</div> <div>Deployment Method</div> <div>Client Package</div> <div>USMT Package</div> <div>USMT Details</div> <div>Settings Package</div> <div>Settings Details</div> <div>Sysprep Package</div> <div>Sysprep Details</div> <div>Summary</div> <div>Progress</div> <div>Confirmation</div>	<div>The selected operating system image (WIM) file contains multiple images. Specify which image you would like to deploy.</div> <div><input type="text" value="Windows Server 2019 SERVERDATACENTER"/></div> <div><div>Previous</div><div>Next</div><div>Cancel</div></div>
--	--



Deployment Method

Choose Template
 General
 Details
 Capture Settings
Boot Image
 General Settings
 Options
 Components
 Customization
MDT Package
 MDT Details
OS Image
 Image Details
 Install Source
 OS Image Index
Deployment Method
Client Package
USMT Package
 USMT Details
Settings Package
 Settings Details
Sysprep Package
 Sysprep Details
Summary
Progress
Confirmation

This task sequence can optionally display a wizard during the deployment process to allow the user to choose installation options. This is called "User-Driven Installation". Select whether this task sequence should provide this.

- ☒ Perform a "Zero Touch Installation" OS deployment, with no user interaction.
Do not require any user interaction during the operating system deployment process. All installation options are configured by the IT administrator.
- ☐ Perform a "User-Driven Installation"
At the beginning of the operating system deployment process, a wizard will be displayed to allow the user to choose installation options.

[Previous](#)[Next](#)[Cancel](#)

Client Package

Choose Template
 General
 Details
 Capture Settings
Boot Image
 General Settings
 Options
 Components
 Customization
MDT Package
 MDT Details
OS Image
 Image Details
 Install Source
 OS Image Index
Deployment Method
Client Package
USMT Package
 USMT Details
Settings Package
 Settings Details
Sysprep Package
 Sysprep Details
Summary
Progress
Confirmation

Specify the ConfigMgr client package to use.

- ☒ Specify an existing ConfigMgr client package

[Browse...](#)

- ☐ Create a new ConfigMgr client package

Use the site server's ConfigMgr client files to create a new package. The details for this package, including the standard name of "Configuration Manager Client Upgrade", will be automatically set using the ConfigMgr PDF package template.

Note: The new package must be distributed to the needed distribution points manually before it can be used by the task sequence.

[Previous](#)[Next](#)[Cancel](#)



USMT Package

Choose Template

General
Details
Capture Settings

Boot Image

General Settings
Options
Components
Customization

MDT Package

MDT Details

OS Image

Image Details
Install Source
OS Image Index

Deployment Method

Client Package

USMT Package

USMT Details

Settings Package

Settings Details

Sysprep Package

Sysprep Details

Summary

Progress

Confirmation

Specify a USMT package to use.

☐ Specify an existing USMT package

Browse...

☒ Create a new USMT package

The contents of the specified USMT folder will be copied to a new package source folder and that will be used to create the package.

Path to USMT executables and related files:

C:\Program Files (x86)\Windows Kits\10\Assessment and Deployment Kit\User §

Browse...

Package source folder to be created (UNC path):

\\cb\Sources\USMT\MDT 8456

Browse...

Note: The new package must be distributed to the needed distribution points manually before it can be used by the task sequence.

Previous

Next

Cancel



USMT Details

Choose Template

General
Details
Capture Settings

Boot Image

General Settings
Options
Components
Customization

MDT Package

MDT Details

OS Image

Image Details
Install Source
OS Image Index

Deployment Method

Client Package

USMT Package

USMT Details

Settings Package

Settings Details

Sysprep Package

Sysprep Details

Summary

Progress

Confirmation

Specify USMT package properties.

Name:

USMT MDT 8456

Version:

1.0

Language:

English

Manufacturer:

Microsoft

Comments:

This will contain MDT 8456 USMT package created by using dummy MDT Task Sequence

Previous

Next

Cancel



Settings Package

- Choose Template
 - General
 - Details
 - Capture Settings
- Boot Image
 - General Settings
 - Options
 - Components
 - Customization
- MDT Package
 - MDT Details
- OS Image
 - Image Details
 - Install Source
 - OS Image Index
- Deployment Method
- Client Package
- USMT Package
 - USMT Details
- Settings Package**
 - Settings Details
- Sysprep Package
 - Sysprep Details
- Summary
- Progress
- Confirmation

Specify a settings package to use. This package contains the CustomSettings.ini and unattended installation files needed for this OS deployment task sequence.

☐ Specify an existing settings package

[Browse...](#)

☒ Create a new settings package

Package source folder to be created (UNC path):

[Browse...](#)

Note: The new package must be distributed to the needed distribution points manually before it can be used by the task sequence.

[Previous](#)[Next](#)[Cancel](#)

Settings Details

- Choose Template
 - General
 - Details
 - Capture Settings
- Boot Image
 - General Settings
 - Options
 - Components
 - Customization
- MDT Package
 - MDT Details
- OS Image
 - Image Details
 - Install Source
 - OS Image Index
- Deployment Method
- Client Package
- USMT Package
 - USMT Details
- Settings Package
 - Settings Details**
- Sysprep Package
 - Sysprep Details
- Summary
- Progress
- Confirmation

Specify the settings package properties.

Name:

Version:

Language:

Manufacturer:

Comments:

☐ This settings package is for a Server Core operating system installation (Windows Server 2008 R2 or later).

[Previous](#)[Next](#)[Cancel](#)



Sysprep Package

Choose Template

- General
- Details
- Capture Settings
- Boot Image
 - General Settings
 - Options
 - Components
 - Customization
- MDT Package
 - MDT Details
- OS Image
 - Image Details
 - Install Source
 - OS Image Index
- Deployment Method
- Client Package
- USMT Package
 - USMT Details
- Settings Package
 - Settings Details
- Sysprep Package**
 - Sysprep Details
- Summary
- Progress
- Confirmation

Specify a Sysprep package to use.

- ☒ No Sysprep package is required

A Sysprep package is only required if you plan to capture a Windows XP or Windows Server 2003 image. These operating systems are no longer supported.

[Previous](#)[Next](#)[Cancel](#)

Summary

Choose Template

- General
- Details
- Capture Settings
- Boot Image
 - General Settings
 - Options
 - Components
 - Customization
- MDT Package
 - MDT Details
- OS Image
 - Image Details
 - Install Source
 - OS Image Index
- Deployment Method
- Client Package
- USMT Package
 - USMT Details
- Settings Package
 - Settings Details
- Sysprep Package
 - Sysprep Details
- Summary**
- Progress
- Confirmation

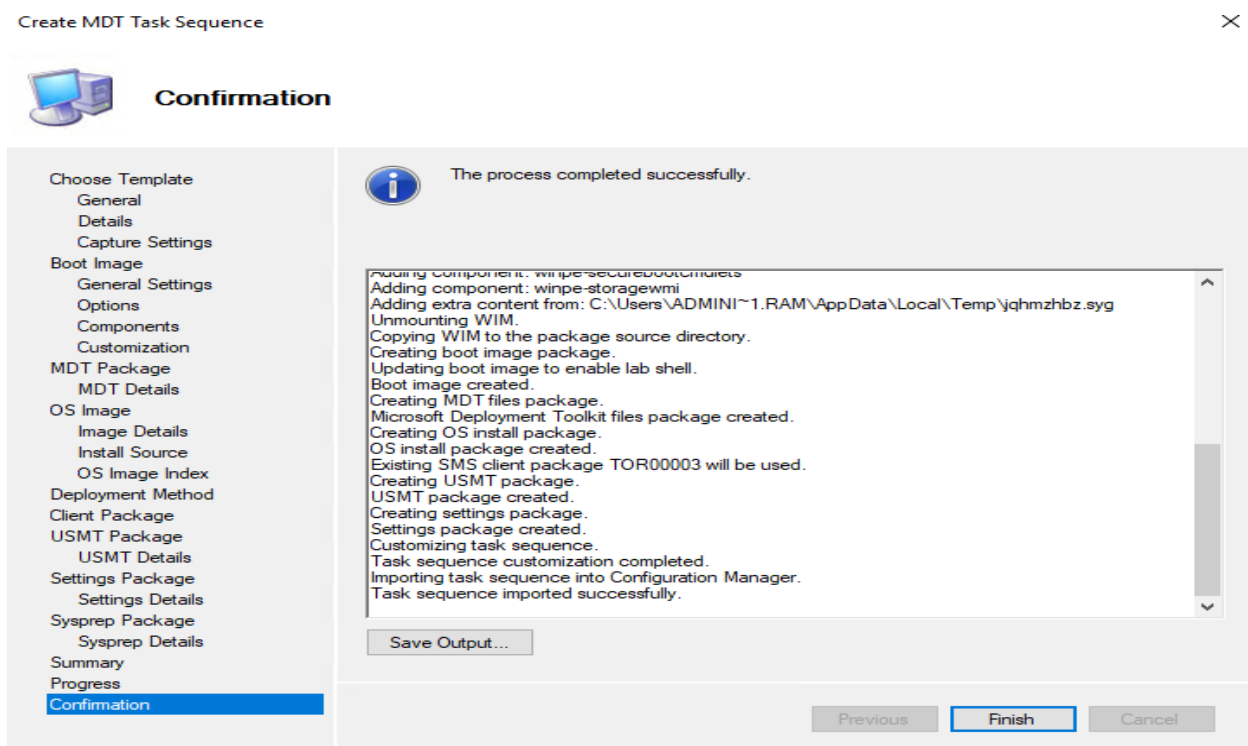
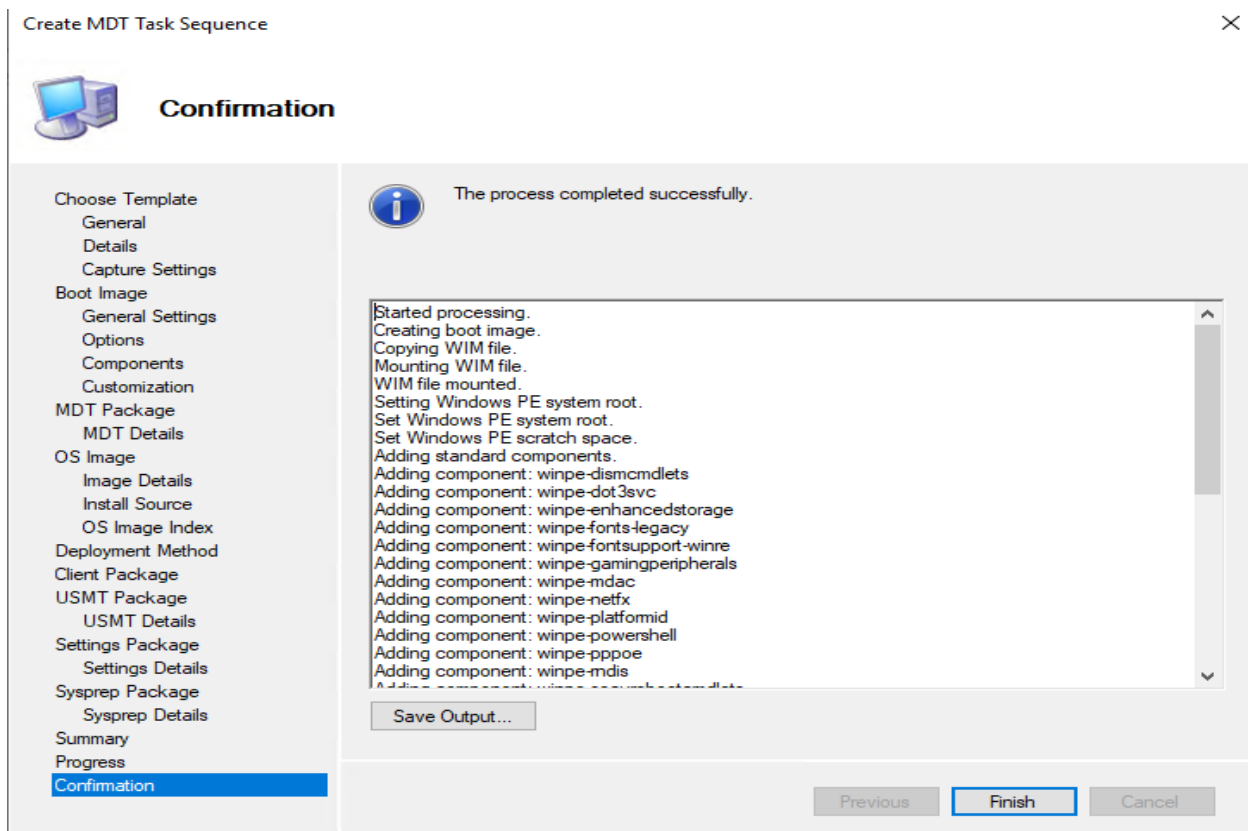
All of the necessary details have been specified. Please review the values below.

Details:

USMTPackageComments:	This will contain MDT 8456 USMT package create
SettingsPackageSource:	\\cb\Sources\OSD\MDT8456\Custom Settings
SettingsPackage:	NewPackage
SettingsPackageName:	MDT 8456 Custom Settings
SettingsPackageVersion:	1.0
SettingsPackageLanguage:	English
SettingsPackageManufacturer:	Microsoft
SettingsPackageComments:	This custom settings is being created using MDT 84
ServerCoreSettings:	False
SysprepPackage:	NoPackage

Click next to execute the requested action.

[Previous](#)[Next](#)[Cancel](#)




Don't forget to distribute the packages (Capture Settings, Boot Image, MDT Package, OS Package, Client Package, USMT Package & Custom Settings) to all distribution points after you click finish button.

TASK SEQUENCE:

Task Sequences 1 items

Search

Icon	Name	Description	Package ID	Date Created
	MDT BOOT 8456	This dummy task s...	TOR00023	13-Feb-2019 2:41 PM

MDT BOOT 8456

Summary

Name:

Description:

Package ID:

Package Type:

Boot Image ID:

MDT BOOT 8456

This dummy task sequence is to createMDT BOOT package for future user.

TOR00023

4

TOR0001E

Summary


References

Deployments







Phased Deployments

Task Sequences 1 items

Search

Icon	Name	Description	Package ID	Date Created
	MDT BOOT 8456	This dummy task s...	TOR00023	13-Feb-2019 2:41 PM

MDT BOOT 8456

Icon	Software	Type	Targeted	Size (MB)	Compliance %	Date Created	Package ID	Source Version	Object ID
	Configuration Manager Client Package	Package	1	229.33	100.0	09-Feb-2019 9:47 AM	TOR00003	3	TOR00003
	MDT 8456 Boot Capture	Boot Image	0	482.97		13-Feb-2019 2:41 PM	TOR0001E	3	TOR0001E
	Microsoft MDT 8456 1.0 English	Package	0	52.77		13-Feb-2019 2:40 PM	TOR0001F	1	TOR0001F
	Microsoft MDT 8456 Custom Settings 1.0 English	Package	0	0.01		13-Feb-2019 2:41 PM	TOR00022	1	TOR00022
	Microsoft USMT MDT 8456 1.0 English	Package	0	125.71		13-Feb-2019 2:41 PM	TOR00021	1	TOR00021
	Windows Server 2019 VL	Operating System Upgrade Package	0	4,613.08		13-Feb-2019 2:41 PM	TOR00020	1	TOR00020

Summary

References

Deployments

Phased Deployments

BOOT IMAGE:

Boot Images 3 items							
Search							
Icon	Name	Version	Comment	Image ID	OS Version	Client Version	
	Boot image (x64)	10.0.17763.1	This boot image is created during setup.	TOR00005	10.0.17763.1	5.00.8634.1010	
	Boot image (x86)	10.0.17763.1	This boot image is created during setup.	TOR00002	10.0.17763.1	5.00.8634.1010	
	MDT 8456 Boot Capture x64	1.0	This boot image is created using task sequence from MDT 8456	TOR0001E	10.0.17763.1	5.00.8740.1024	

MDT 8456 Boot Capture x64

Summary

Comment: This boot image is created using task sequence from MDT 8456

Architecture: X64

Version: 1.0

Language: English (United States)

Client Version: 5.00.8740.1024

Content Status

1 Targeted (Last Update: 13-Feb-2019 2:48 PM)

Success: 1

In Progress: 0

Failed: 0

Unknown: 0

Summary

Details

Boot Images 3 items							
Search							
Icon	Name	Version	Comment	Image ID	OS Version	Client Version	
	Boot image (x64)	10.0.17763.1	This boot image is created during setup.	TOR00005	10.0.17763.1	5.00.8634.1010	
	Boot image (x86)	10.0.17763.1	This boot image is created during setup.	TOR00002	10.0.17763.1	5.00.8634.1010	
	MDT 8456 Boot Capture x64	1.0	This boot image is created using task sequence from MDT 8456	TOR0001E	10.0.17763.1	5.00.8740.1024	

MDT 8456 Boot Capture x64

Index	Description	OS Version	Language	Architecture	Size (MB)	
1	Microsoft Windows PE (x64)	10.0.17763.1	English (United States)	X64	2,792.11	


Summary

Details

OPERATING SYSTEM:

Operating System Upgrade Packages 1 items

Search

Icon	Name	Version	Comment	Package ID	OS Version	Scheduled Updates Date	Scheduled Updates Status	
	Windows Server 2019 VL	1.0	This contains Win...	TOR00020	10.0.17763.107			

Windows Server 2019 VL


Summary

Content Status

Comment: This contains Windows Server 2019 Volume released in Jan 2019 - Version 1809 17763.292

Version: 1.0

Language: English (United States)



1 Targeted (Last Update: 13-Feb-2019 2:52 PM)

Success: 1

In Progress: 0

Failed: 0

Unknown: 0

Summary

Details

Disk Configuration

Update Status

Operating System Upgrade Packages 1 items

Search

Icon	Name	Version	Comment	Package ID	OS Version	Scheduled Updates Date	Scheduled Updates Status	
	Windows Server 2019 VL	1.0	This contains Win...	TOR00020	10.0.17763.107			

Windows Server 2019 VL

Icon	Index	Description	OS Version	Edition	Language	Architecture	Size (MB)	HAL Type
	1	Windows Server 2019 SERVERSTANDARDCORE	10.0.17763.107	Windows Server 2019 SERVERSTANDARDCORE	English (United States)	X64	7,617.34	
	2	Windows Server 2019 SERVERSTANDARD	10.0.17763.107	Windows Server 2019 SERVERSTANDARD	English (United States)	X64	13,517.03	
	3	Windows Server 2019 SERVERDATACENTERCORE	10.0.17763.107	Windows Server 2019 SERVERDATACENTERCORE	English (United States)	X64	7,614.77	
	4	Windows Server 2019 SERVERDATACENTER	10.0.17763.107	Windows Server 2019 SERVERDATACENTER	English (United States)	X64	13,521.44	








Summary

Details

Disk Configuration

Update Status

PACKAGES:

Packages 7 items							
Search							
Icon	Name	Programs	Manufacturer	Version	Language	Package ID	Readiness
	Configuration Manager Client Package	0	Microsoft Corporation			TOR00003	Unknown
	Configuration Manager Client Piloting Package	0	Microsoft Corporation			TOR00007	Unknown
	MDT 8456	0	Microsoft	1.0	English	TOR0001F	Unknown
	MDT 8456 Custom Settings	0	Microsoft	1.0	English	TOR00022	Unknown
	User State Migration	0	MS	10	English	TOR0000A	Unknown
	User State Migration Tool for Windows	0	Microsoft Corporation	10.0.17763.1		TOR00001	Unknown
	USMT MDT 8456	0	Microsoft	1.0	English	TOR00021	Unknown

This concludes the whole process of upgrading MDT 8450 to MDT 8456.

Thanks

Ram Lan

13th Feb 2019