

Installing TP1810 Technical Preview on Windows Server 2019

In this post, I will show you how to install and configure Config Manager 1810 Technical Preview on Windows Server 2019 with SQL Server 2017. I am not sure, if TP1810 supports Windows Server 2019 – yet, I am going to try and see what happens.

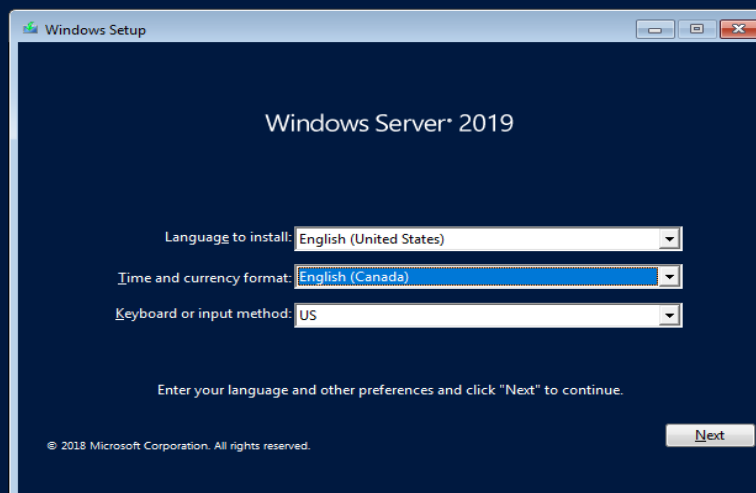
If you are following my lab this will be an addition to my Production CB1806 lab which has CAS, PRI and SEC. I am installing TP1810 just to explore new features that are made available by Microsoft before it gets incorporated to production Current Branch.

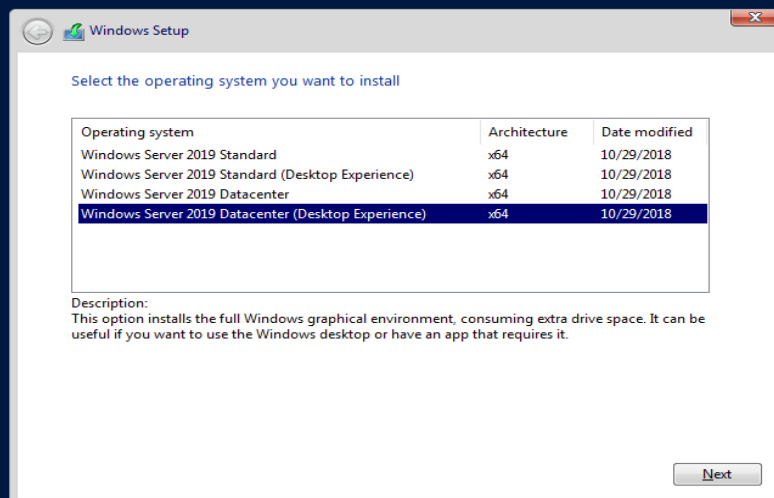
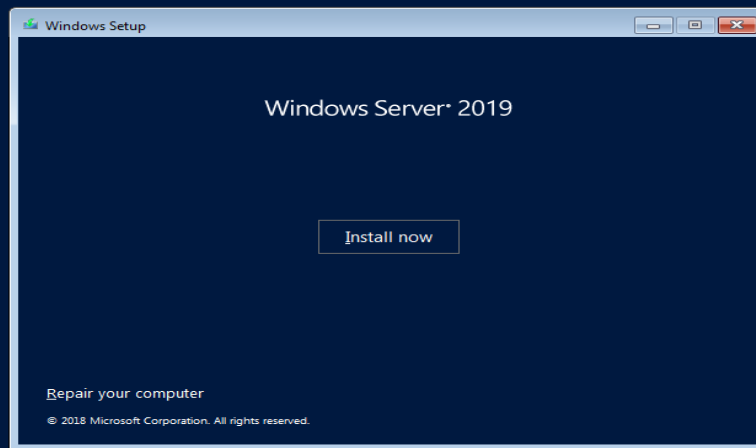
My lab setup will be one server for TP1810 with all the roles and features installed. It will have 250GB hard disk and 5GB memory. For test purpose this is sufficient.

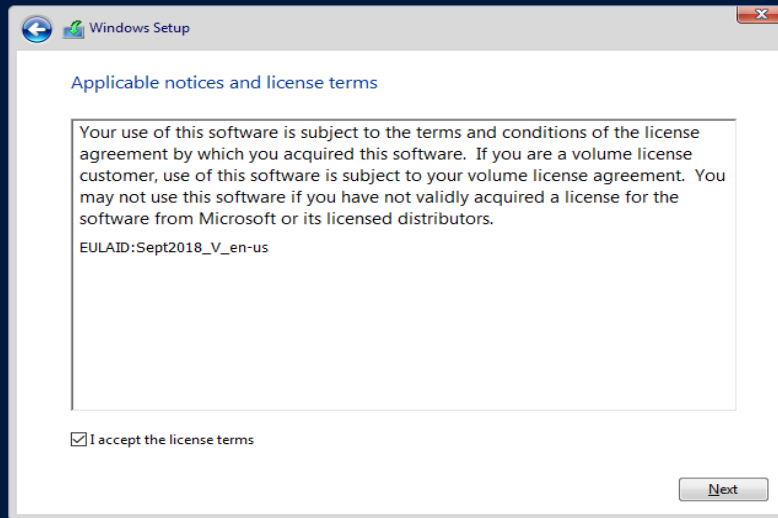
Follow the article and enjoy!

I have created a virtual machine called CMTP and installed all the updates and joined to the domain. After that used SCCM CB Prerequisites Tool 3.0.1 to install various roles and features required for TP1810. After that installed SQL 2017 and CU9, WSUS, WDS, ADK 1809 and restarted the system. I also made sure required permission were given to TP1810 computer account within System Management Container on Domain Controller through ADSI Edit. Now we are ready to install TP1810.

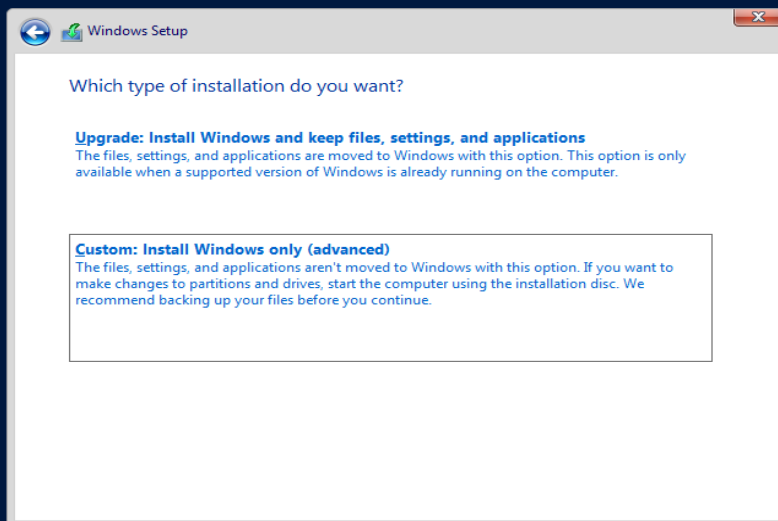
VM Creation: Create a bootable USB & boot the system to start Server 2019 install as described below:



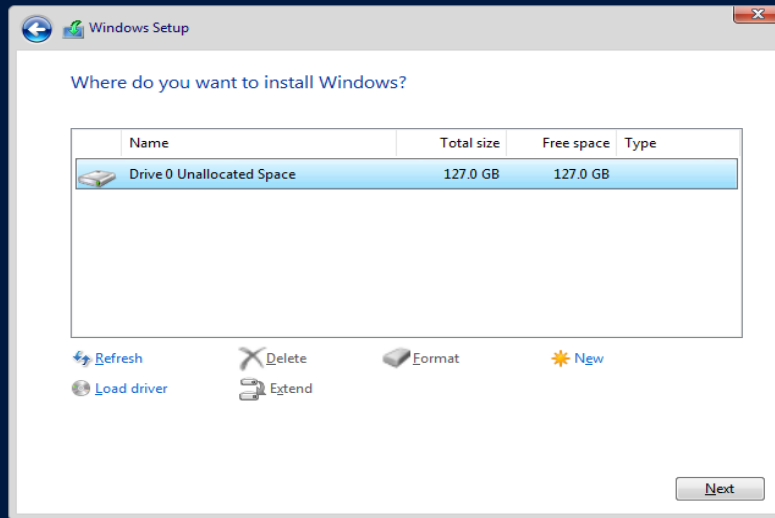




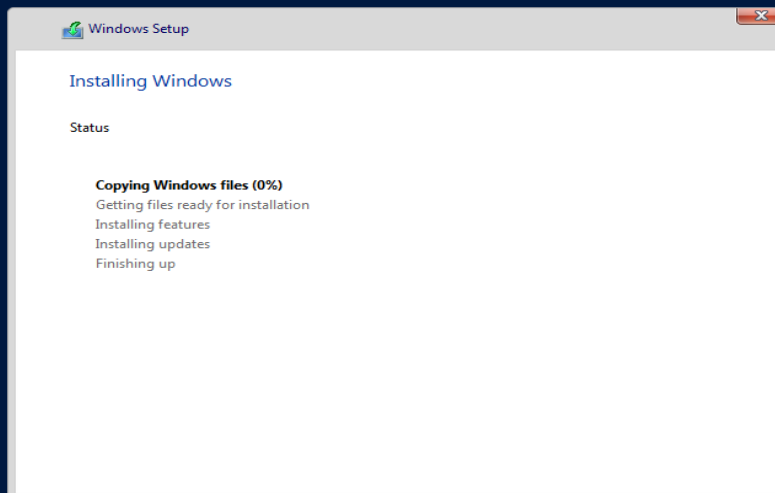
1 Collecting information 2 Installing Windows



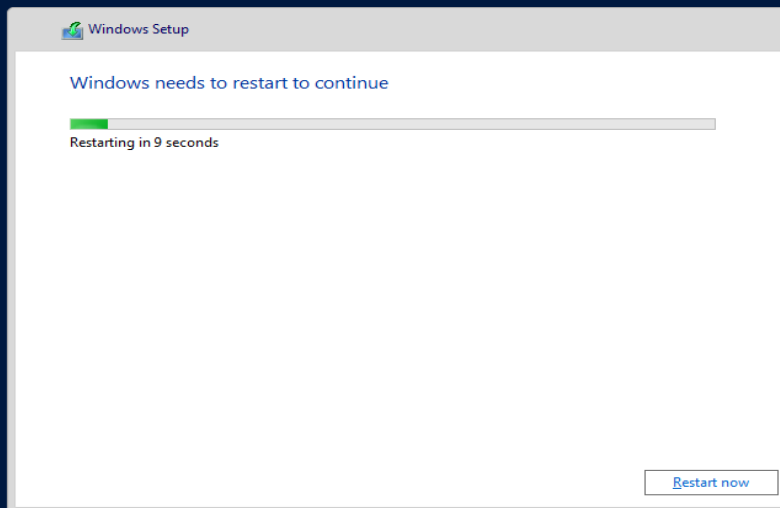
1 Collecting information 2 Installing Windows



1 Collecting information 2 Installing Windows



1 Collecting information 2 Installing Windows



1 Collecting information

2 Installing Windows

Hyper-V™



Starting services


Hyper-V™



Getting ready

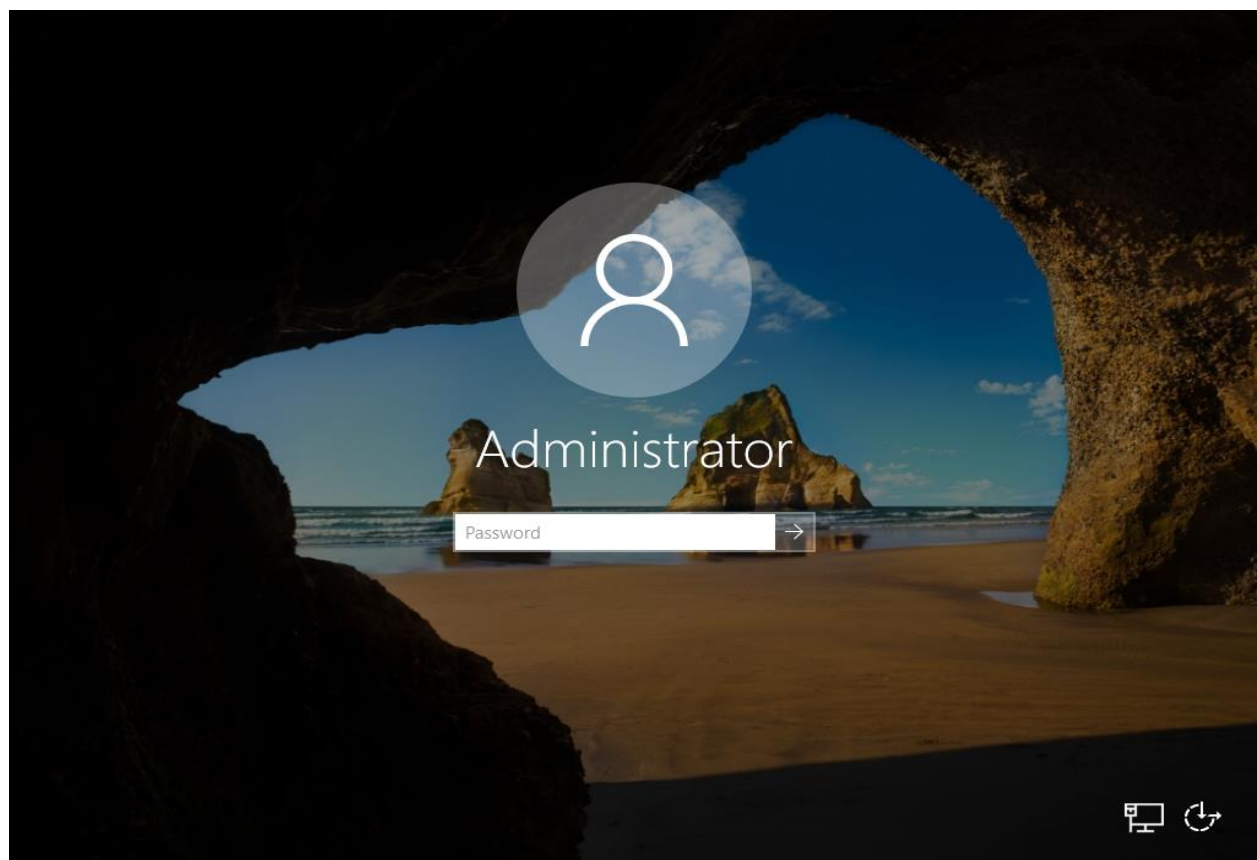
Customize settings

Type a password for the built-in administrator account that you can use to sign in to this computer.

User name	<input type="text" value="Administrator"/>
Password	<input type="password" value="••••••••"/>
Reenter password	<input type="password" value="••••••••"/> 



Finish



Server Manager

Server Manager ▸ Dashboard

Dashboard
Local Server
All Servers

WELCOME TO SERVER MANAGER

QUICK START

WHAT'S NEW

LEARN MORE

- 1 Configure this local server
- 2 Add roles and features
- 3 Add other servers to manage
- 4 Create a server group
- 5 Connect this server to cloud services

Hide

ROLES AND SERVER GROUPS

Roles: 0 | Server groups: 1 | Servers total: 1

Local Server 1

- Manageability
- Events
- Services
- Performance
- BPA results

All Servers 1

- Manageability
- Events
- Services
- Performance
- BPA results

10:16 AM 2018-11-14

Server Manager

Server Manager ▸ Dashboard

Dashboard
Local Server
All Servers
File and Storage Services ▸

ROLES AND SERVER GROUPS

Roles: 1 | Server groups: 1 | Servers total: 1

File and Storage Services 1

- Manageability
- Events
- Performance
- BPA results

Local Server 1

- Manageability
- Events
- Services
- Performance
- BPA results

All Servers 1

- Manageability
- Events
- Services
- Performance
- BPA results

10:17 AM 2018-11-14

Server Manager

Server Manager ▸ Local Server

Dashboard
Local Server
All Servers
File and Storage Services ▸

PROPERTIES

For WIN-FQFF2GD08IE

Computer name	WIN-FQFF2GD08IE	Last installed updates	Never
Workgroup	WORKGROUP	Windows Update	Install updates automatically
		Last checked for updates	Never
Windows Defender Firewall	Private: On	Windows Defender Antivirus	Real-Time Protection: On
Remote management	Enabled	Feedback & Diagnostics	Settings
Remote Desktop	Disabled	IE Enhanced Security Configuration	On
Hyper-V	Disabled	Time zone	(UTC-05:00) Eastern Time
Internet	IPv4 address assigned by DHCP, IPv6 enabled	Product ID	00430-00000-00000-AA
Operating system version	Microsoft Windows Server 2019 Datacenter	Processors	Intel(R) Core(TM) i7-2630
Hardware information	Microsoft Corporation Virtual Machine	Installed memory (RAM)	3.95 GB
		Total disk space	126.4 GB

EVENTS

All events | 6 total

Server Name	ID	Severity	Source	Log	Date and Time
WIN-FQFF2GD08IE	7030	Error	Microsoft-Windows-Service Control Manager	System	2018-11-14 10:15:17 AM
WIN-FQFF2GD08IE	10149	Warning	Microsoft-Windows-Windows Remote Management	System	2018-11-14 10:13:57 AM
WIN-FQFF2GD08IE	134	Warning	Microsoft-Windows-Time-Service	System	2018-11-14 10:13:08 AM

10:18 AM
2018-11-14

About Windows

Windows Server® 2019

Microsoft Windows Server

Version 1809 (OS Build 17763.107)

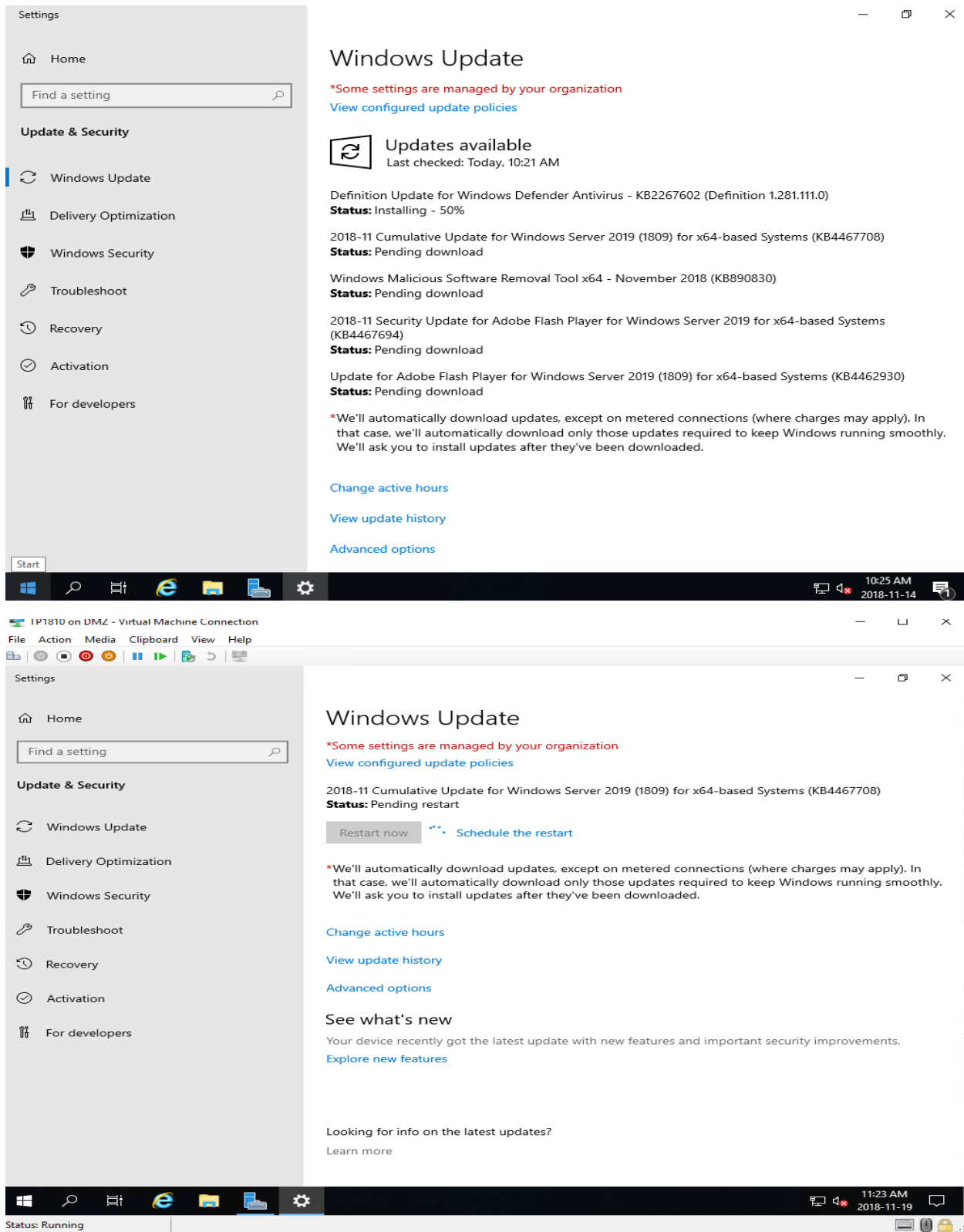
© 2018 Microsoft Corporation. All rights reserved.

The Windows Server 2019 Datacenter operating system and its user interface are protected by trademark and other pending or existing intellectual property rights in the United States and other countries/regions.

This product is licensed under the [Microsoft Software License Terms](#) to:

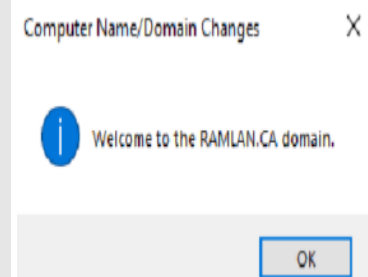
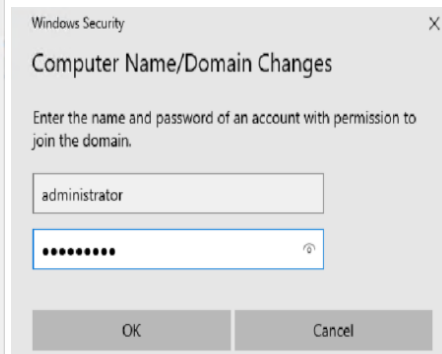
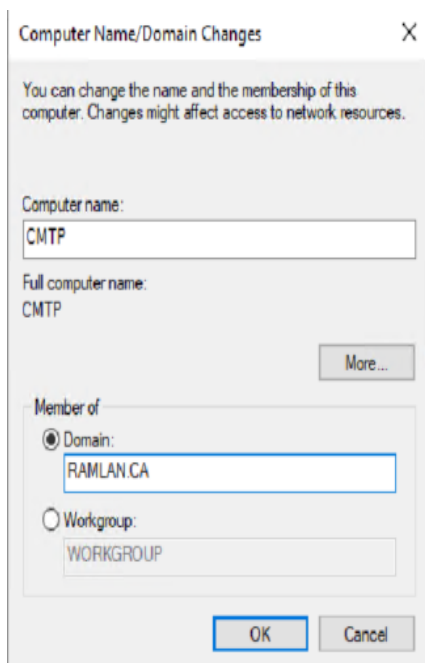
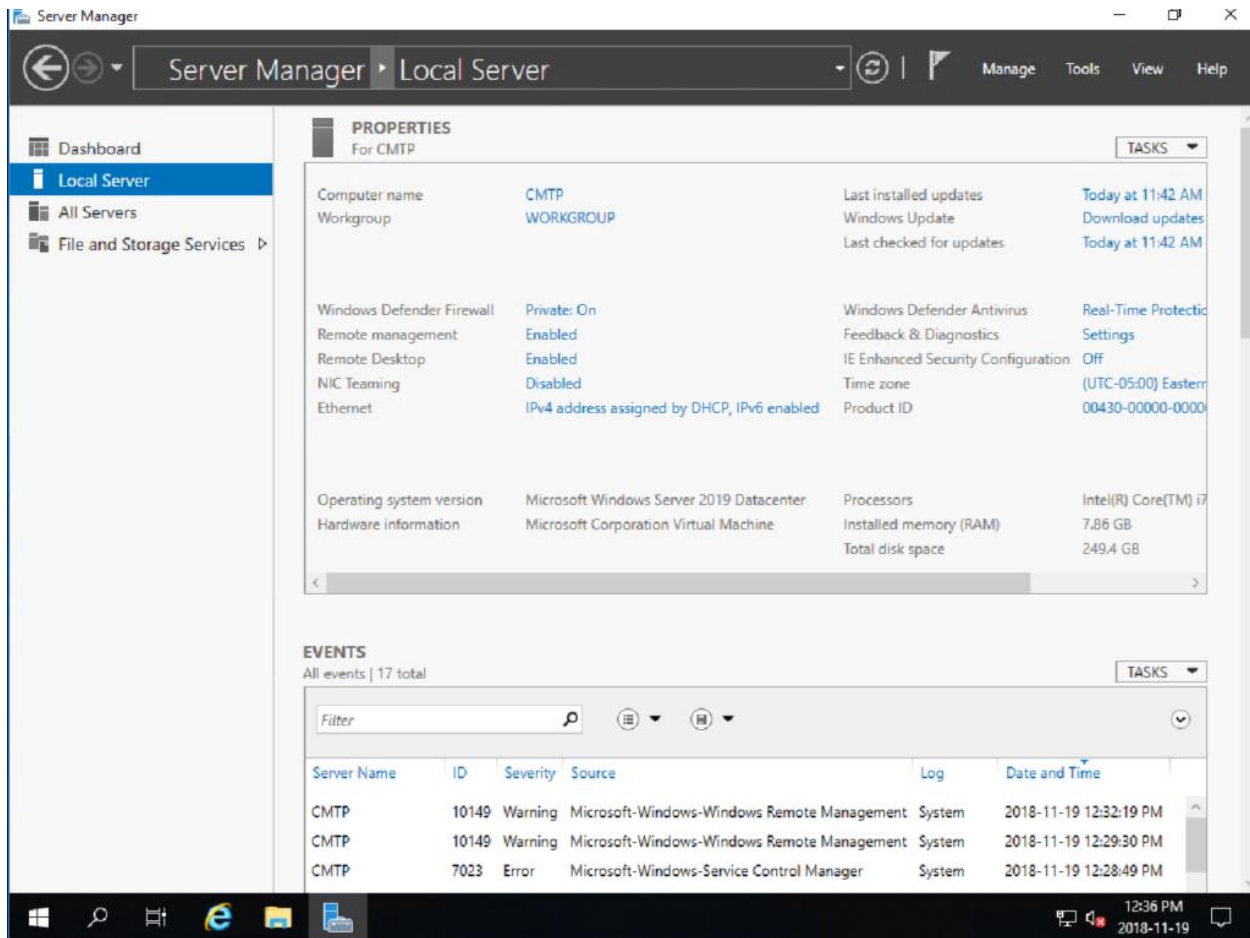
Windows User

OK



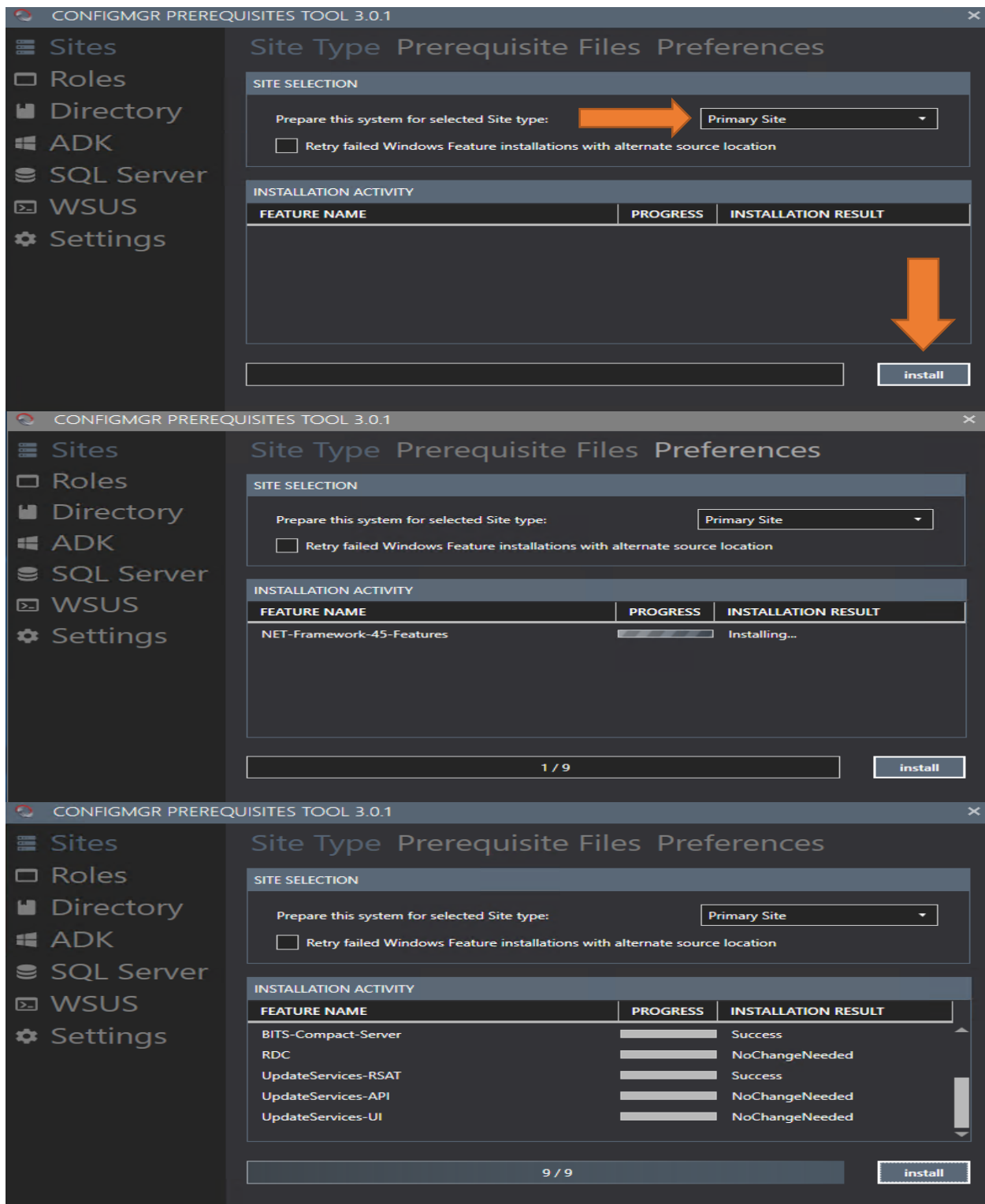
After installing above updates restarted the system. Now we are ready to join the machine to the domain and install required roles and features.

Join to Domain:



Roles & Features:

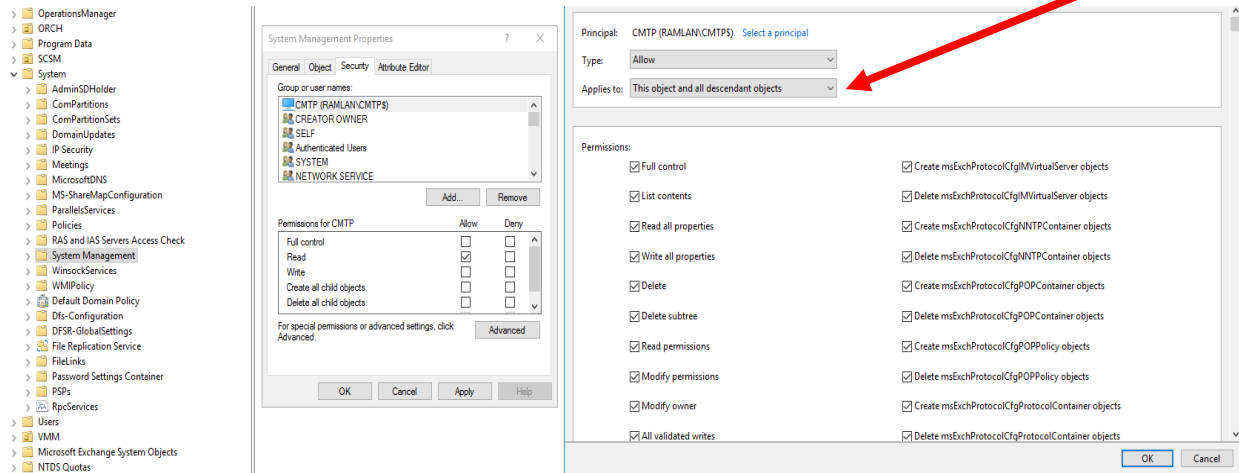
We will be using this tool to install roles and features. Just select the site type and click install.



System Management Container Permission:

Open Active Directory Users & Computers – System – System Management – Properties – Security

Add CMTP Computer and then click Advanced and set up the permission as per screen shot below.

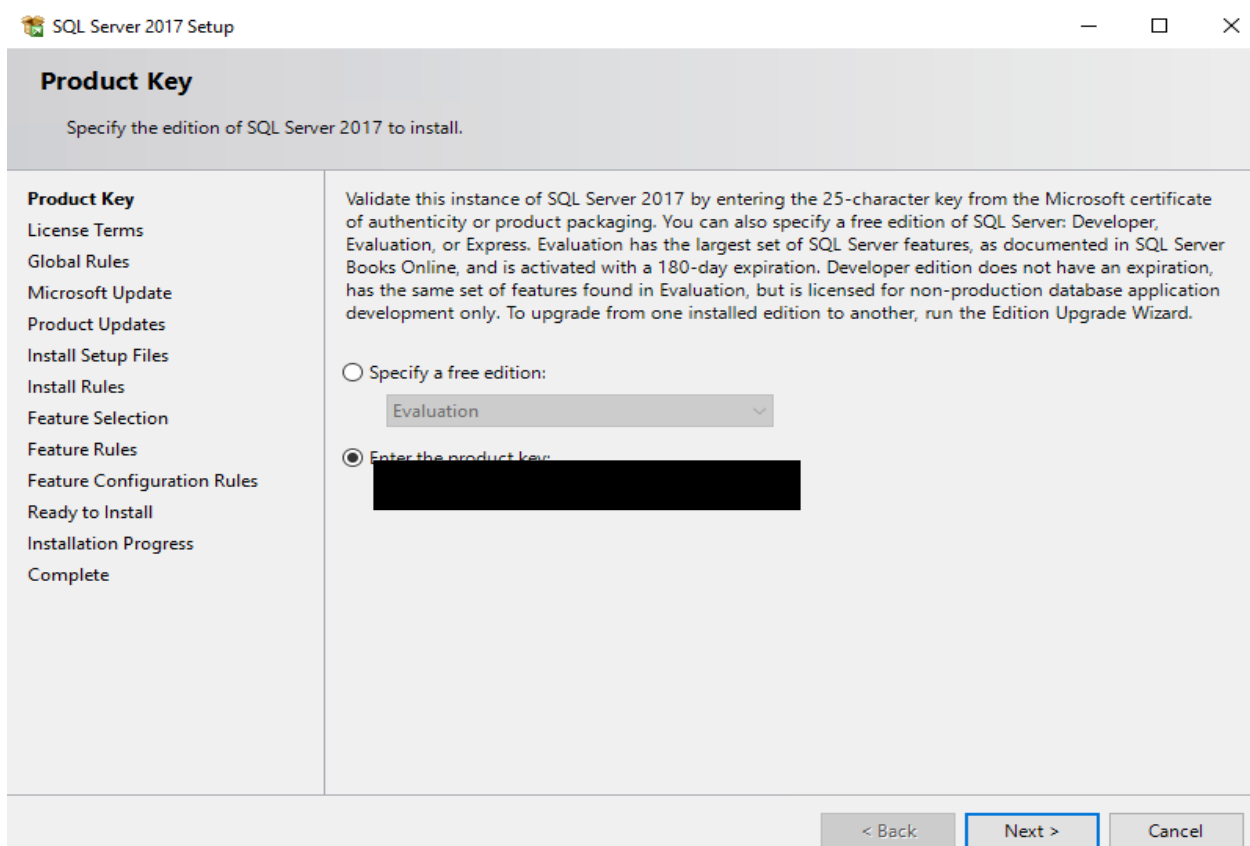
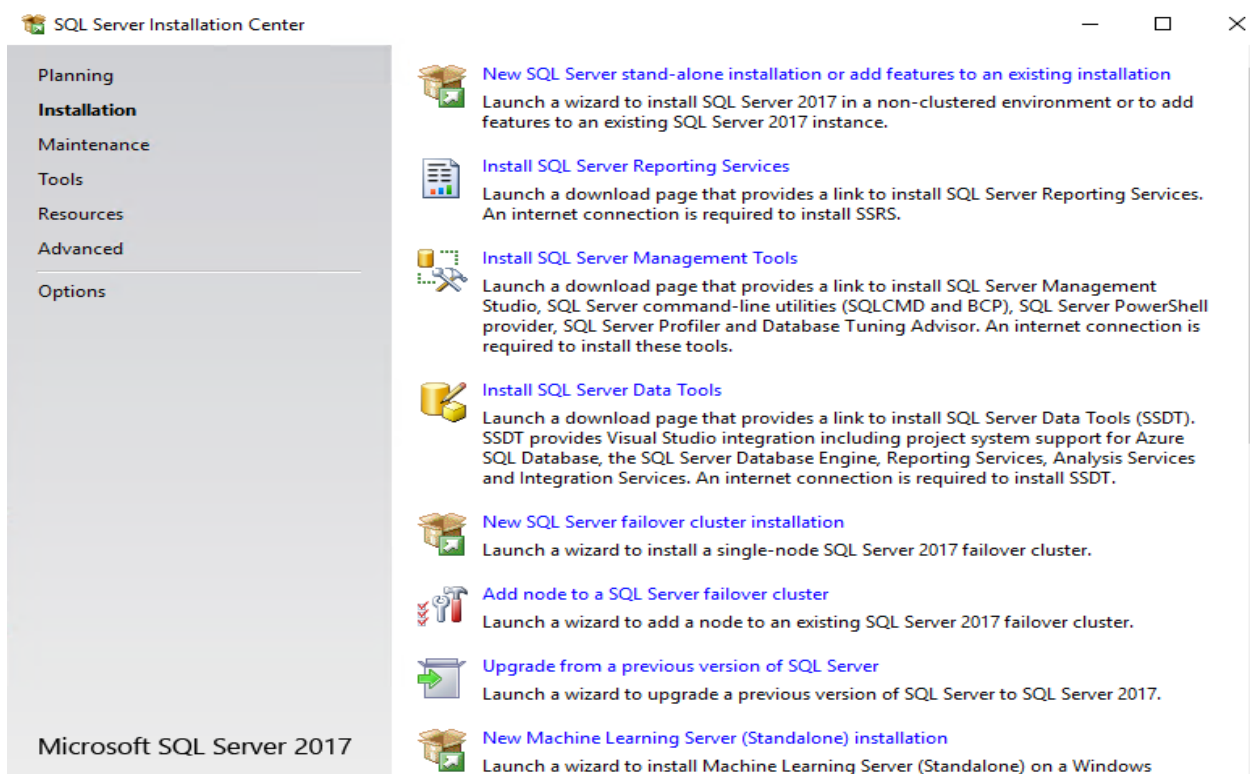


Install SQL 2017:

Run Setup.exe

CMTP > DVD Drive (E:) SqlSetup_x64_ENU >

Name	Date modified	Type	Size
1033_ENU_LP	23-Aug-2017 1:55 ...	File folder	
redist	23-Aug-2017 1:55 ...	File folder	
resources	23-Aug-2017 1:55 ...	File folder	
Tools	23-Aug-2017 1:55 ...	File folder	
x64	23-Aug-2017 5:52 ...	File folder	
autorun.inf	04-Aug-2017 10:0...	Setup Information	1 KB
MediaInfo.xml	23-Aug-2017 1:57 ...	XML Document	1 KB
setup.exe	22-Aug-2017 8:38 ...	Application	107 KB
setup.exe.config	18-Aug-2017 4:41 ...	CONFIG File	1 KB
SqlSetupBootstrapper.dll	22-Aug-2017 8:20 ...	Application extens...	235 KB



License Terms



To install SQL Server 2017, you must accept the Microsoft Software License Terms.

Product Key
License Terms
Global Rules
Microsoft Update
Product Updates
Install Setup Files
Install Rules
Feature Selection
Feature Rules
Feature Configuration Rules
Ready to Install
Installation Progress
Complete

MICROSOFT SOFTWARE LICENSE TERMS**MICROSOFT SQL SERVER 2017 ENTERPRISE**

These license terms are an agreement between Microsoft Corporation (or based on where you live, one of its affiliates) and you. Please read them. They apply to the software named above, which includes the media on which you received it, if any. The terms also apply to any Microsoft

- updates,
- supplements,
- Internet-based services, and

 
Copy Print

☒ I accept the license terms.

SQL Server 2017 transmits information about your installation experience, as well as other usage and performance data, to Microsoft to help improve the product. To learn more about SQL Server 2017 data processing and privacy controls, please see the [Privacy Statement](#).

< Back

Next >

Cancel

Microsoft Update

Use Microsoft Update to check for important updates

Product Key
License Terms
Global Rules
Microsoft Update
Product Updates
Install Setup Files
Install Rules
Feature Selection
Feature Rules
Feature Configuration Rules
Ready to Install
Installation Progress
Complete

Microsoft Update offers security and other important updates for Windows and other Microsoft software, including SQL Server 2017. Updates are delivered using Automatic Updates, or you can visit the Microsoft Update website.

☒ Use Microsoft Update to check for updates (recommended)

[Microsoft Update FAQ](#)

[Microsoft Update Privacy Statement](#)

< Back

Next >

Cancel

Install Rules

Setup rules identify potential problems that might occur while running Setup. Failures must be corrected before Setup can continue.

Product Key
License Terms
Global Rules
Microsoft Update
Product Updates
Install Setup Files
Install Rules
Feature Selection
Feature Rules
Feature Configuration Rules
Ready to Install
Installation Progress
Complete

Operation completed. Passed: 3. Failed 0. Warning 1. Skipped 0.

Hide details <<

Re-run

[View detailed report](#)

	Rule	Status
✓	Fusion Active Template Library (ATL)	Passed
✓	Consistency validation for SQL Server registry keys	Passed
✓	Computer domain controller	Passed
⚠	Windows Firewall	Warning

< Back

Next >

Cancel

Feature Selection

Select the Enterprise features to install.

Product Key
License Terms
Global Rules
Microsoft Update
Product Updates
Install Setup Files
Install Rules
Feature Selection
Feature Rules
Instance Configuration
Server Configuration
Database Engine Configuration
Feature Configuration Rules
Ready to Install
Installation Progress
Complete

Looking for Reporting Services? [Download it from the web](#)

Features:

- Instance Features**
- ☒ Database Engine Services
 - ☐ SQL Server Replication
 - ☐ Machine Learning Services (In-Database)
 - ☐ R
 - ☐ Python
 - ☒ Full-Text and Semantic Extractions for Search
 - ☐ Data Quality Services
 - ☐ PolyBase Query Service for External Data
 - ☐ Analysis Services

Feature description:

The configuration and operation of each instance feature of a SQL Server instance is isolated from other SQL Server instances. SQL

Prerequisites for selected features:

Already installed:
Windows PowerShell 3.0 or higher
Microsoft .NET Framework 4.6

Disk Space Requirements

Drive C: 1421 MB required, 240520 MB available

Select All

Unselect All

Instance root directory:

C:\Program Files\Microsoft SQL Server\

Shared feature directory:

C:\Program Files\Microsoft SQL Server\

Shared feature directory (x86):

C:\Program Files (x86)\Microsoft SQL Server\

< Back

Next >

Cancel

Instance Configuration

Specify the name and instance ID for the instance of SQL Server. Instance ID becomes part of the installation path.

Product Key
License Terms
Global Rules
Microsoft Update
Product Updates
Install Setup Files
Install Rules
Feature Selection
Feature Rules
Instance Configuration
Server Configuration
Database Engine Configuration
Feature Configuration Rules
Ready to Install
Installation Progress
Complete

☒ Default instance

☐ Named instance: MSSQLSERVER

Instance ID: MSSQLSERVER

SQL Server directory: C:\Program Files\Microsoft SQL Server\MSSQL14.MSSQLSERVER

Installed instances:

Instance Name	Instance ID	Features	Edition	Version

< Back

Next >

Cancel

Server Configuration

Specify the service accounts and collation configuration.

Product Key
License Terms
Global Rules
Microsoft Update
Product Updates
Install Setup Files
Install Rules
Feature Selection
Feature Rules
Instance Configuration
Server Configuration
Database Engine Configuration
Feature Configuration Rules
Ready to Install
Installation Progress
Complete

Service Accounts Collation

Microsoft recommends that you use a separate account for each SQL Server service.

Service	Account Name	Passwo...	Startup Type
SQL Server Agent	NT AUTHORITY\SYSTEM		Automatic ▾
SQL Server Database Engine	NT AUTHORITY\SYSTEM		Automatic ▾
SQL Full-text Filter Daemon Launc...	NT Service\MSSQLFDLauncher		Manual
SQL Server Browser	NT AUTHORITY\LOCAL SERVICE		Automatic ▾

☐ Grant Perform Volume Maintenance Task privilege to SQL Server Database Engine Service

This privilege enables instant file initialization by avoiding zeroing of data pages. This may lead to information disclosure by allowing deleted content to be accessed.

[Click here for details](#)

< Back

Next >

Cancel

Server Configuration

Specify the service accounts and collation configuration.

Product Key
License Terms
Global Rules
Microsoft Update
Product Updates
Install Setup Files
Install Rules
Feature Selection
Feature Rules
Instance Configuration
Server Configuration
Database Engine Configuration
Feature Configuration Rules
Ready to Install
Installation Progress
Complete

Service Accounts Collation

Database Engine:

SQL_Latin1_General_CP1_CI_AS

Customize...

Latin1-General, case-insensitive, accent-sensitive, kanatype-insensitive, width-insensitive for Unicode Data, SQL Server Sort Order 52 on Code Page 1252 for non-Unicode Data

< Back

Next >

Cancel

Database Engine Configuration

Specify Database Engine authentication security mode, administrators, data directories and TempDB settings.

Product Key
License Terms
Global Rules
Microsoft Update
Product Updates
Install Setup Files
Install Rules
Feature Selection
Feature Rules
Instance Configuration
Server Configuration
Database Engine Configuration
Feature Configuration Rules
Ready to Install
Installation Progress
Complete

Server Configuration Data Directories TempDB FILESTREAM

Specify the authentication mode and administrators for the Database Engine.

Authentication Mode

☒ Windows authentication mode

☐ Mixed Mode (SQL Server authentication and Windows authentication)

Specify the password for the SQL Server system administrator (sa) account.

Enter password:

Confirm password:

Specify SQL Server administrators

RAMLAN\Administrator (Administrator)
CMTP\Administrator (Administrator)
RAMLAN\ram (Ram)

SQL Server administrators have unrestricted access to the Database Engine.

Add Current User

Add...

Remove

< Back

Next >

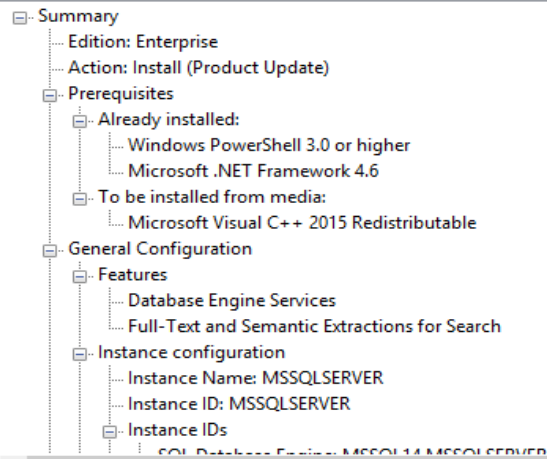
Cancel

Ready to Install

Verify the SQL Server 2017 features to be installed.

Product Key
License Terms
Global Rules
Microsoft Update
Product Updates
Install Setup Files
Install Rules
Feature Selection
Feature Rules
Instance Configuration
Server Configuration
Database Engine Configuration
Feature Configuration Rules
Ready to Install
Installation Progress
Complete

Ready to install SQL Server 2017:



Configuration file path:

C:\Program Files\Microsoft SQL Server\140\Setup Bootstrap\Log\20181119_131845\ConfigurationFile.ini

< Back

Install

Cancel

Complete

Your SQL Server 2017 installation completed successfully with product updates.

Product Key
License Terms
Global Rules
Microsoft Update
Product Updates
Install Setup Files
Install Rules
Feature Selection
Feature Rules
Instance Configuration
Server Configuration
Database Engine Configuration
Feature Configuration Rules
Ready to Install
Installation Progress
Complete

Information about the Setup operation or possible next steps:

Feature	Status
✓ Full-Text and Semantic Extractions for Search	Succeeded
✓ Database Engine Services	Succeeded
✓ SQL Browser	Succeeded
✓ SQL Writer	Succeeded
✓ SQL Client Connectivity	Succeeded
✓ SQL Client Connectivity SDK	Succeeded

Details:

Install successful.






Summary log file has been saved to the following location:


C:\Program Files\Microsoft SQL Server\140\Setup Bootstrap\Log\20181119_131845\Summary_CMTP_20181119_131845.txt

Close

SQL 2017 CU9 Install:

> CMTF > Downloads >

Name	Date modified	Type	Size
 SCCM CB Prerequisites Tool 3.0.1	19-Nov-2018 12:4...	File folder	
 01 en sql server 2017 enterprise x64 dvd 11293666.iso	31-Oct-2017 9:49 ...	Disc Image File	1,510,004 KB
 02 CU9 SQLServer2017-KB4341265-x64.exe	24-Jul-2018 12:36 ...	Application	497,360 KB
 03 SQLServerReportingServices.exe	20-Feb-2018 10:59...	Application	95,327 KB
 ConfigMgrPrerequisitesTool.exe	19-Nov-2018 12:4...	Application	2,648 KB

 Install a SQL Server 2017 update

License Terms

To install the update, you must accept the Microsoft Software License Terms.

SQL Server 2017 update

License Terms

Select Features

Check Files In Use



Ready to update

Update Progress

Complete

UPDATE FOR MICROSOFT SQL SERVER 2017

PLEASE NOTE: Refer to your license terms for Microsoft SQL Server 2017 software (the "software") to identify the entity licensing this supplement to you and for support information. You may use a copy of this supplement with each validly licensed copy of the software. You may not use the supplement if you do not have a license for the software. The license terms for the software apply to your use of this supplement.

 
Copy Print

☒ I accept the license terms and [Privacy Statement](#)

SQL Server transmits information about your installation experience, as well as other usage and performance data, to Microsoft to help improve the product. To learn more about data processing and privacy controls, and to turn off the collection of this information after installation, see the [documentation](#).

< Back

Next >

Cancel

Select Features

Specify the features to update.

SQL Server 2017 update

License Terms

Select Features

Check Files In Use

Ready to update

Update Progress

Complete

Instances:

☒ MSSQLSERVER

- ☐ Database Engine Services
 - ☐ Full-Text and Semantic Extractions for Search
- ☒ Shared Features
 - ☐ SQL Client Connectivity SDK

Select All

Unselect All

Description:

Language:

Edition:

Patch Level:

Architecture:

Service Pack:

Upgrade Status:

< Back

Next >

Cancel

Check Files In Use

The following services and applications are using files that Setup needs to complete the installation. To avoid a computer restart, stop the applications and services.

SQL Server 2017 update

License Terms

Select Features

Check Files In Use

Ready to update

Update Progress

Complete

Files in use check completed.

Stop check

Refresh check



< Back

Next >

Cancel

Ready to update

Verify the list of features to be updated.

SQL Server 2017 update

License Terms

Select Features

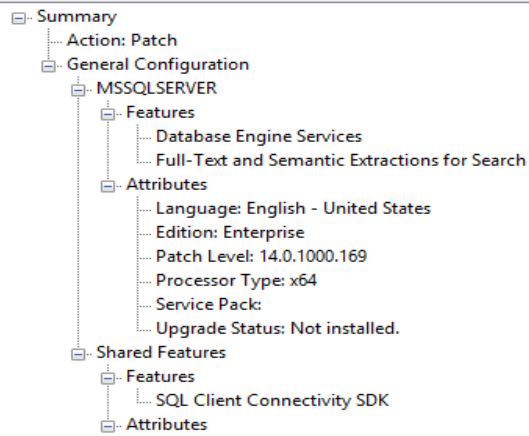
Check Files In Use

Ready to update

Update Progress

Complete

Ready to update:



Configuration file path:

< Back

Update

Cancel

Complete

Your SQL Server 2017 update operation is complete.

SQL Server 2017 update

License Terms

Select Features

Check Files In Use

Ready to update

Update Progress

Complete

Information about the Setup operation or possible next steps:

Feature	Status
✓ Full-Text and Semantic Extractions for Search (MS...	Succeeded
✓ Database Engine Services (MSSQLSERVER)	Succeeded
✓ SQL Browser (MSSQLSERVER)	Succeeded
✓ SQL Writer (MSSQLSERVER)	Succeeded
✓ Setup Support Files (MSSQLSERVER)	Succeeded

Summary log file has been saved to the following location:

C:\Program Files\Microsoft SQL Server\140\Setup Bootstrap\Log\20181119_133120\Summary CMTP_20181119_133120.txt

Close

SQL 2017 Reporting Services Install:

CMTF > Downloads

Name	Date modified	Type	Size
SCCM CB Prerequisites Tool 3.0.1	19-Nov-2018 12:4...	File folder	
01 en sql server 2017 enterprise x64 dvd 11293666.iso	31-Oct-2017 9:49 ...	Disc Image File	1,510,004 KB
02 CU9 SQLServer2017-KB4341265-x64.exe	24-Jul-2018 12:36 ...	Application	497,360 KB
03 SQLServerReportingServices.exe	20-Feb-2018 10:59...	Application	95,327 KB
ConfigMgrPrerequisitesTool.exe	19-Nov-2018 12:4...	Application	2,648 KB

Microsoft SQL Server 2017 Reporting Services

(October 2017)

Welcome

Install Reporting Services

SQL Server Reporting Services transmits information about your installation experience, as well as other usage and performance data, to Microsoft to help improve the product. To learn more about SQL Server Reporting Services data processing and privacy controls, please see [Privacy Statement](#).

Microsoft SQL Server 2017 Reporting Services

(October 2017)

Choose an edition to install

☐ Choose a free edition:

Evaluation (expires in 180 days) ▾

☒ Enter the product key:

Cancel

< Previous

Next >

Microsoft SQL Server 2017 Reporting Services

(October 2017)

Review the license terms

MICROSOFT SOFTWARE LICENSE TERMS

MICROSOFT SQL SERVER 2017 ENTERPRISE

These license terms are an agreement between Microsoft Corporation (or based on where you live, one of its affiliates) and you. Please read them. They apply to the software named above, which includes the media on which you received it, if any. The terms also apply to any Microsoft

- updates,
- supplements,
- Internet-based services, and
- support services

for this software, unless other terms accompany those items. If so, those terms apply.

☒ I accept the license terms

Cancel

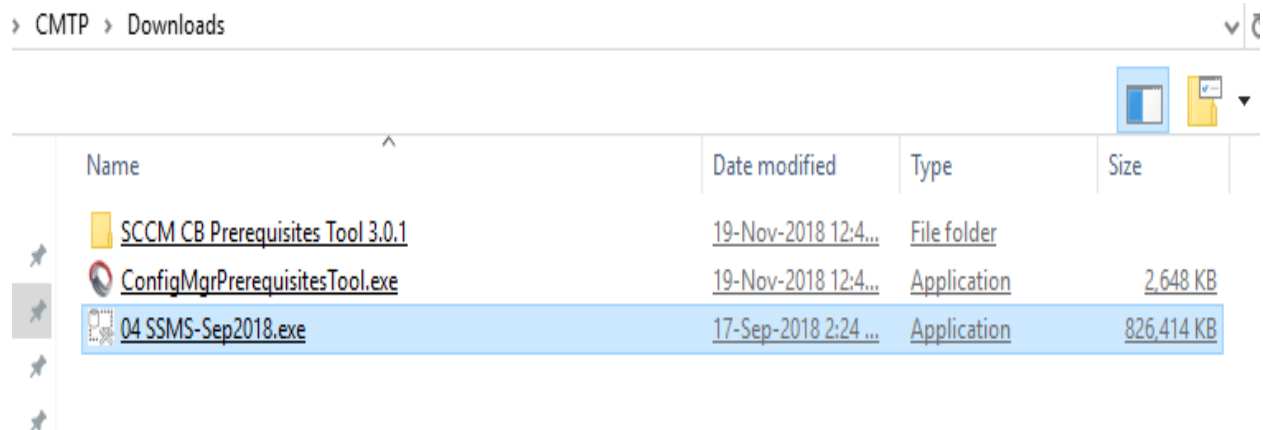
< Previous

Next >





SQL 2017 Management Studio Install:





RELEASE 17.9

Microsoft SQL Server Management Studio

Welcome. Click "Install" to begin.

By clicking the "Install" button, I acknowledge that I accept the [License Terms](#) and [Privacy Statement](#).

SQL Server Management Studio transmits information about your installation experience, as well as other usage and performance data, to Microsoft to help improve the product. To learn more about data processing and privacy controls, and to turn off the collection of this information after installation, see the [documentation](#).

Install

Close



RELEASE 17.9

Microsoft SQL Server Management Studio




Setup Completed


All specified components have been installed successfully.

Close

ADK 1809 Install:

CMTF > Downloads > Windows Kits ADK 1809 > 10 > ADK >

Name	Date modified	Type	Size
 Installers	19-Nov-2018 2:30 ...	File folder	
 adksetup.exe	11-Oct-2018 11:25...	Application	1,857 KB
 UserExperienceManifest.xml	18-Oct-2018 11:37...	XML Document	37 KB

 Windows Assessment and Deployment Kit - Windows 10

Specify Location

- ☒ Install the Windows Assessment and Deployment Kit - Windows 10 to this computer

Install Path:

C:\Program Files (x86)\Windows Kits\10\

Browse...

- ☐ Download the Windows Assessment and Deployment Kit - Windows 10 for installation on a separate computer

Download Path:

C:\Users\administrator.RAMLAN\Downloads\Windows Kits\10\ADK

Browse...

Estimated disk space required: 1.1 GB
Disk space available: 224.1 GB

Next

Cancel

Windows Kits Privacy

Windows 10 Kits collect and send anonymous usage data to Microsoft about how our customers use Microsoft programs and about some of the problems they encounter. Microsoft uses this information to improve the products and features. Participation in the program is voluntary, and the end results are software improvements to better meet the needs of our customers. No code or software produced by you will be collected.

[Tell me more about the Windows 10 program.](#)

Send anonymous usage data to Microsoft for the Windows 10 Kits?

- ☒ Yes
☐ No

* Participation applies to all Windows Kits installed on this computer.

[Privacy Statement](#)

Back

Next

Cancel

License Agreement

You must accept the terms of this agreement to continue. If you do not accept the Microsoft Software License Terms, click Decline.

MICROSOFT SOFTWARE LICENSE TERMS

Microsoft Windows Assessment and Deployment Kit (ADK) for Windows 10
Microsoft Windows Hardware Lab Kit (HLK) for Windows 10
Microsoft Windows Driver Kit (WDK) for Windows 10

These license terms are an agreement between Microsoft Corporation (or based on where you live, one of its affiliates) and you. Please read them. They apply to the software named above, which includes the media on which you received it, if any. The terms also apply to any Microsoft

- updates,
- supplements,
- Internet-based services, and
- support services,

for this software, unless other terms accompany those items. If so, those terms apply.

By using the software, you accept these terms. If you do not accept them, do not use the software.

If you comply with these license terms, you have the perpetual rights below.

1. INSTALLATION AND USE RIGHTS.

Back

Accept

Decline

Select the features you want to install

Click a feature name for more information.

- ☐ Application Compatibility Tools
- ☒ Deployment Tools
- ☐ Imaging And Configuration Designer (ICD)
- ☐ Configuration Designer
- ☒ User State Migration Tool (USMT)
- ☐ Volume Activation Management Tool (VAMT)
- ☐ Windows Performance Toolkit
- ☐ Microsoft User Experience Virtualization (UE-V) Template Ger
- ☐ Microsoft Application Virtualization (App-V) Sequencer
- ☐ Microsoft Application Virtualization (App-V) Auto Sequencer
- ☐ Media eXperience Analyzer

User State Migration Tool (USMT)

Size: 612.7 MB

Tools to migrate user data from a previous installation of Windows to a new installation.

Includes:

- ScanState tool
- LoadState tool
- USMTUtils tool

Estimated disk space required:

708.4 MB

Disk space available:

224.1 GB



Back

Install

Cancel

Welcome to the Windows Assessment and Deployment Kit - Windows 10!




- ☐ Launch the Getting Started Guide


Learn more about Windows Assessment and Deployment Kit - Windows 10 and how it can help you design and deploy Windows, and help you build high quality experiences.

Close

ADK 1809 WinPE install:

CMTF > Downloads > Windows Kits ADK 1809 > 10 > ADKWinPEAddons >

Name	Date modified	Type	Size
 Installers	19-Nov-2018 2:34 ...	File folder	
 adkwinpesetup.exe	18-Oct-2018 10:25...	Application	1,303 KB
 UserExperienceManifest.xml	18-Oct-2018 11:21...	XML Document	7 KB

 Windows Assessment and Deployment Kit Windows Preinstallation Environment Add-ons - Windows 10 — □ ×

Specify Location

- ☒ Install the Windows Assessment and Deployment Kit Windows Preinstallation Environment Add-ons - Windows 10 to this computer

Install Path:

C:\Program Files (x86)\Windows Kits\10\

Browse...

* Windows Kit common installation path used

- ☐ Download the Windows Assessment and Deployment Kit Windows Preinstallation Environment Add-ons - Windows 10 for installation on a separate computer

Download Path:

C:\Users\administrator.RAMLAN\Downloads\Windows Kits\10\ADKWinPEAddons

Browse...

Estimated disk space required: 5.7 GB
Disk space available: 223.2 GB

Next

Cancel

Windows Kits Privacy

Windows 10 Kits collect and send anonymous usage data to Microsoft about how our customers use Microsoft programs and about some of the problems they encounter. Microsoft uses this information to improve the products and features. Participation in the program is voluntary, and the end results are software improvements to better meet the needs of our customers. No code or software produced by you will be collected.

[Tell me more about the Windows 10 program.](#)

Send anonymous usage data to Microsoft for the Windows 10 Kits?

- ☒ Yes
☐ No

* You are currently participating in the CEIP program. Participation applies to all Windows kits installed on this computer.

[Privacy Statement](#)

Back

Next

Cancel

License Agreement

You must accept the terms of this agreement to continue. If you do not accept the Microsoft Software License Terms, click Decline.

MICROSOFT SOFTWARE LICENSE TERMS

Microsoft Windows Assessment and Deployment Kit (ADK) for Windows 10
Microsoft Windows Hardware Lab Kit (HLK) for Windows 10
Microsoft Windows Driver Kit (WDK) for Windows 10

These license terms are an agreement between Microsoft Corporation (or based on where you live, one of its affiliates) and you. Please read them. They apply to the software named above, which includes the media on which you received it, if any. The terms also apply to any Microsoft

- updates,
- supplements,
- Internet-based services, and
- support services,

for this software, unless other terms accompany those items. If so, those terms apply.

By using the software, you accept these terms. If you do not accept them, do not use the software.

If you comply with these license terms, you have the perpetual rights below.

1. INSTALLATION AND USE RIGHTS.

Back

Accept

Decline

Select the features you want to install

Click a feature name for more information.

☒ Windows Preinstallation Environment (Windows PE)

Windows Preinstallation Environment (Windows PE)

Size: 5.7 GB

Minimal operating system designed to prepare a computer for installation and servicing of Windows.

Includes:

- Windows PE (x86)
- Windows PE (AMD64)

Estimated disk space required:	5.7 GB
Disk space available:	223.2 GB

Back

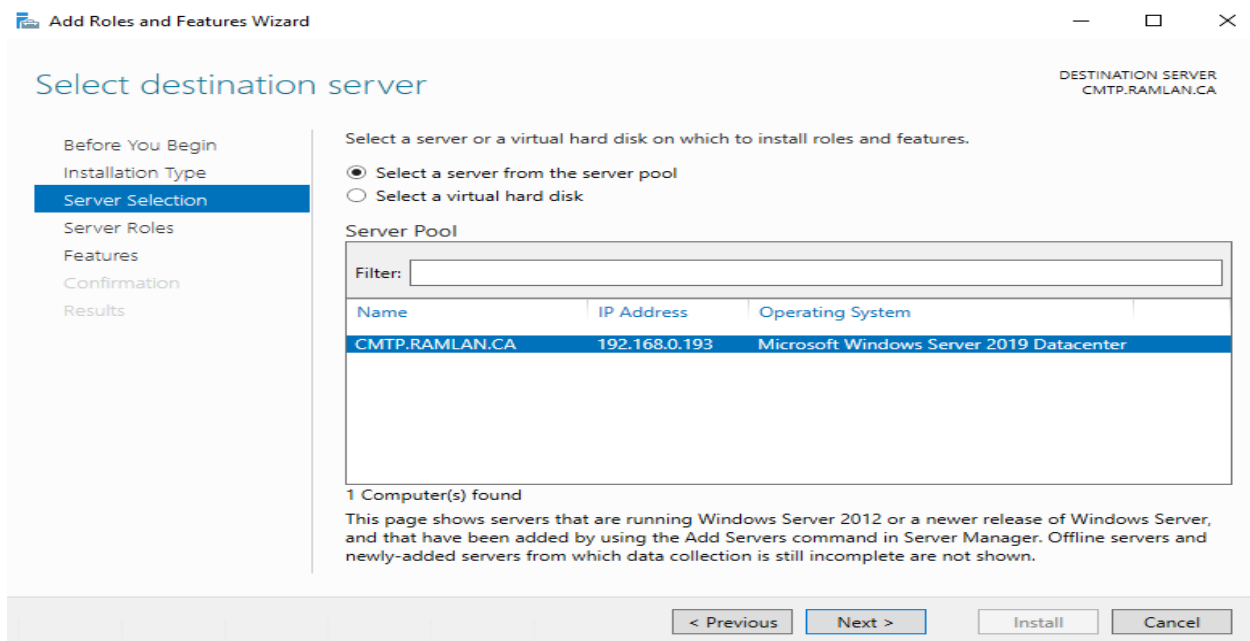
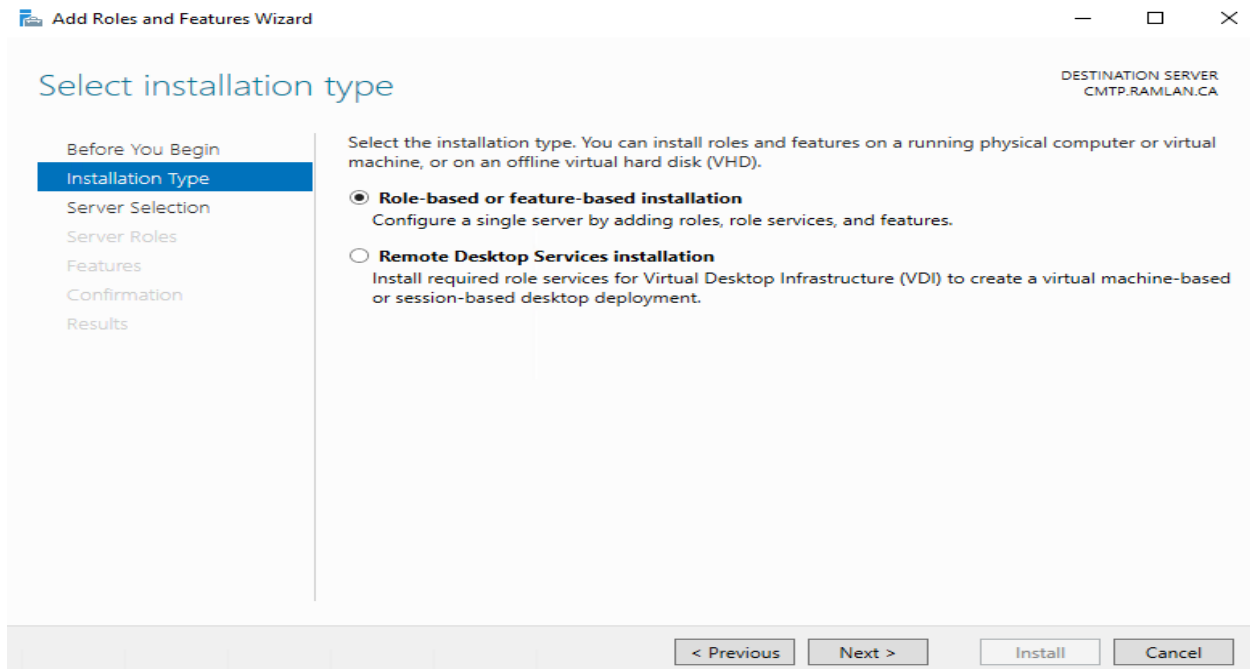
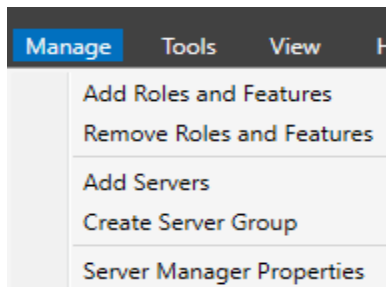
Install

Cancel

Welcome to the Windows Assessment and Deployment Kit Windows Preinstallation Environment Add-ons - Windows 10!

Close

Install WSUS Role:



Select server roles

DESTINATION SERVER
CMTP.RAMLAN.CA

Before You Begin

Installation Type

Server Selection

Server Roles

Features

WSUS

Role Services

Content

Confirmation

Results

Select one or more roles to install on the selected server.

Roles

- ☐ Active Directory Domain Services
- ☐ Active Directory Federation Services
- ☐ Active Directory Lightweight Directory Services
- ☐ Active Directory Rights Management Services
- ☐ Device Health Attestation
- ☐ DHCP Server
- ☐ DNS Server
- ☐ Fax Server
- ☒ File and Storage Services (1 of 12 installed)
- ☐ Host Guardian Service
- ☐ Hyper-V
- ☐ Network Controller
- ☐ Network Policy and Access Services
- ☐ Print and Document Services
- ☐ Remote Access
- ☐ Remote Desktop Services
- ☐ Volume Activation Services
- ☒ Web Server (IIS) (17 of 43 installed)
- ☐ Windows Deployment Services
- ☒ Windows Server Update Services

Description

Windows Server Update Services allows network administrators to specify the Microsoft updates that should be installed, create separate groups of computers for different sets of updates, and get reports on the compliance levels of the computers and the updates that must be installed.

< Previous

Next >

Install

Cancel

Select features

DESTINATION SERVER
CMTP.RAMLAN.CA

Before You Begin

Installation Type

Server Selection

Server Roles

Features

WSUS

Role Services

Content

Confirmation

Results

Select one or more features to install on the selected server.

Features

- ☒ .NET Framework 3.5 Features (1 of 3 installed)
- ☒ .NET Framework 4.7 Features (Installed)
- ☒ Background Intelligent Transfer Service (BITS) (Inst
- ☐ BitLocker Drive Encryption
- ☐ BitLocker Network Unlock
- ☐ BranchCache
- ☐ Client for NFS
- ☐ Containers
- ☐ Data Center Bridging
- ☐ Direct Play
- ☐ Enhanced Storage
- ☐ Failover Clustering
- ☐ Group Policy Management
- ☐ Host Guardian Hyper-V Support
- ☐ I/O Quality of Service
- ☐ IIS Hostable Web Core
- ☐ Internet Printing Client
- ☐ IP Address Management (IPAM) Server
- ☐ iSNS Server service

Description

.NET Framework 3.5 combines the power of the .NET Framework 2.0 APIs with new technologies for building applications that offer appealing user interfaces, protect your customers' personal identity information, enable seamless and secure communication, and provide the ability to model a range of business processes.

< Previous

Next >

Install

Cancel

Windows Server Update Services

DESTINATION SERVER
CMTP.RAMLAN.CA

Before You Begin

Installation Type

Server Selection

Server Roles

Features

WSUS

Role Services

Content

Confirmation

Results

Windows Server Update Services (WSUS) allows administrators to manage the download and installation of updates from the Microsoft Update website to the local network.

Things to note:

- At least one WSUS server in a network must be able to download updates from Microsoft Update. Other WSUS server can get updates either from that server or from Microsoft Update.
- WSUS server-to-server and server-to-client communications should be set up to use the Secure Sockets Layer (SSL).

< Previous

Next >

Install

Cancel

Select role services

DESTINATION SERVER
CMTP.RAMLAN.CA

Before You Begin

Installation Type

Server Selection

Server Roles

Features

WSUS

Role Services

Content

DB Instance

Confirmation

Results

Select the role services to install for Windows Server Update Services

Role services

- ☐ WID Connectivity
- ☒ WSUS Services
- ☒ SQL Server Connectivity

Description

Installs the feature that enables WSUS to connect to a Microsoft SQL Server database.

< Previous

Next >

Install

Cancel

Content location selection

DESTINATION SERVER
CMTP.RAMLAN.CA

Before You Begin
Installation Type
Server Selection
Server Roles
Features
WSUS
Role Services
Content
DB Instance
Confirmation
Results

If you have a drive formatted with NTFS and at least 6 GB of free disk space, you can use it to store updates for client computers to download quickly.

If you need to save disk space, clear the check box to store updates on Microsoft Update; downloads will be slower.

If you choose to store updates locally, updates are not downloaded to your WSUS server until you approve them. By default, when updates are approved, they are downloaded for all languages.

☒ Store updates in the following location (choose a valid local path on CMTP.RAMLAN.CA, or a remote path):

< Previous

Next >

Install

Cancel

Database Instance Selection

DESTINATION SERVER
CMTP.RAMLAN.CA

Before You Begin
Installation Type
Server Selection
Server Roles
Features
WSUS
Role Services
Content
DB Instance
Confirmation
Results

Specify an existing database server (Machine name\Instance name) to install the WSUS database:

Check connection

Successfully connected to server

< Previous

Next >

Install

Cancel

Confirm installation selections

DESTINATION SERVER
CMTP.RAMLAN.CA

Before You Begin

Installation Type

Server Selection

Server Roles

Features

WSUS

Role Services

Content

DB Instance

Confirmation

Results

To install the following roles, role services, or features on selected server, click Install.

☒ Restart the destination server automatically if required

Optional features (such as administration tools) might be displayed on this page because they have been selected automatically. If you do not want to install these optional features, click Previous to clear their check boxes.

Web Server (IIS)
Web Server
Performance
Dynamic Content Compression
Security
Windows Authentication

Windows Internal Database

Windows Server Update Services
SQL Server Connectivity
WSUS Services

[Export configuration settings](#)
[Specify an alternate source path](#)

< Previous

Next >

Install

Cancel

Installation progress

DESTINATION SERVER
CMTP.RAMLAN.CA

Before You Begin

Installation Type

Server Selection

Server Roles

Features

WSUS

Role Services


Content

DB Instance

Confirmation

Results


View installation progress

 Feature installation

Configuration required. Installation succeeded on CMTP.RAMLAN.CA.

Windows Server Update Services
Additional configuration must be performed before continuing
[Launch Post-Installation tasks](#)
SQL Server Connectivity
WSUS Services

Web Server (IIS)
Web Server
Performance
Dynamic Content Compression
Security
Windows Authentication

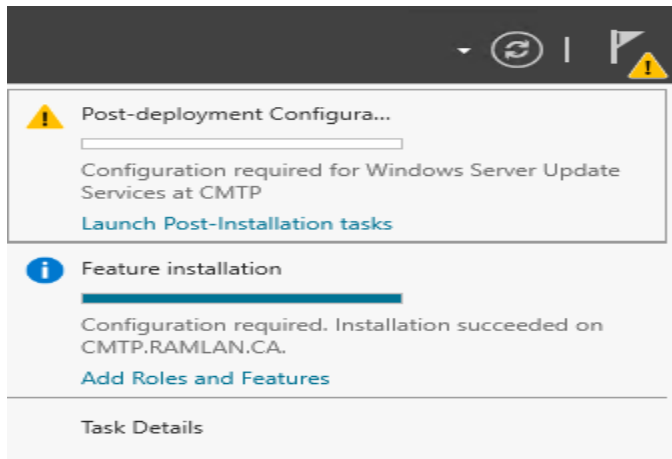
 You can close this wizard without interrupting running tasks. View task progress or open this page again by clicking Notifications in the command bar, and then Task Details.[Export configuration settings](#)

< Previous

Next >

Close

Cancel

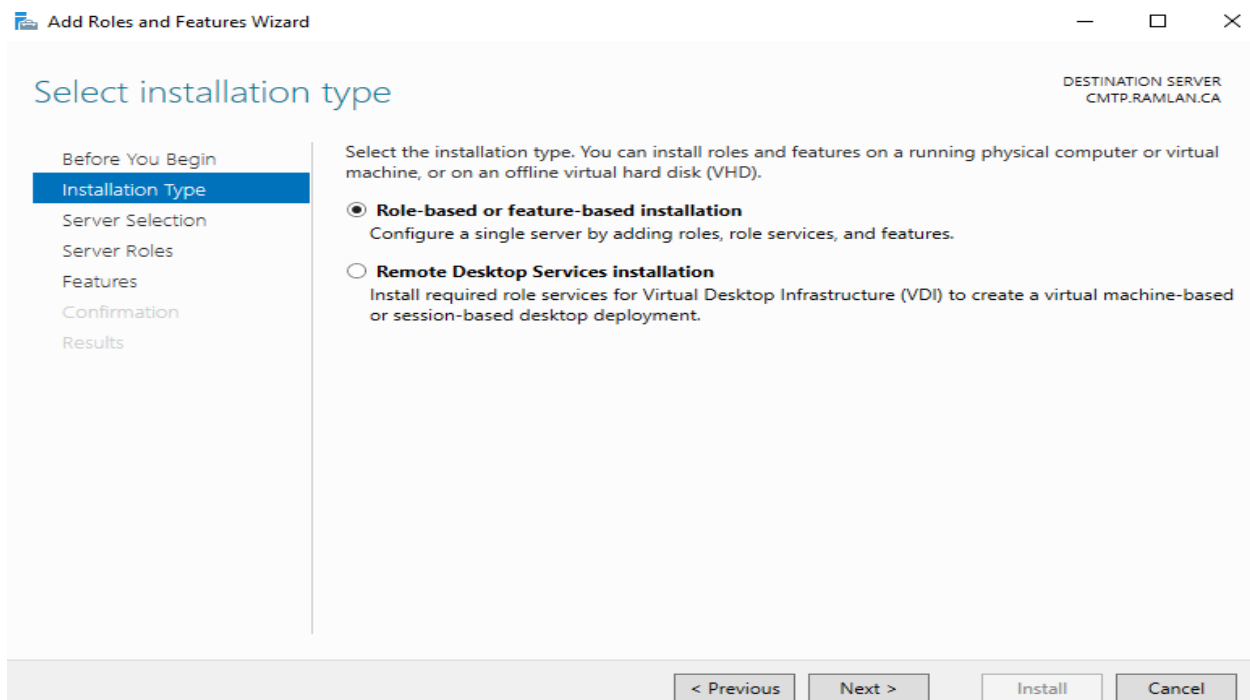


Launch Post Installation tasks failed. So, I had to run this command to fix the error.

```
C:\Program Files\Update Services\Tools>.wsusutil.exe postinstall content_dir=C:\Temp sql_instance_name=CMTP
Log file is located at C:\Users\administrator.RAMLAN\AppData\Local\Temp\WSUS_PostInstall_20181119T201006.log
Post install is starting
Post install has successfully completed
```

```
2018-11-19 15:11:21 Saving Subscription
2018-11-19 15:11:22 Creating default subscription succeeded.
2018-11-19 15:11:22 Populating Auto-Approval Rules.
2018-11-19 15:11:22 Populating Auto-Approval Rules Succeeded.
2018-11-19 15:11:23 StartServer completed successfully.
2018-11-19 15:11:23 Marking PostInstall done for UpdateServices-Services in the registry...
2018-11-19 15:11:23 Mark initialization done in database...
2018-11-19 15:11:23 End: Run
2018-11-19 15:11:23 Postinstall completed
```

WDS Install:



Select destination server

DESTINATION SERVER
CMTP.RAMLAN.CA

Before You Begin

Installation Type

Server Selection

Server Roles

Features

Confirmation

Results

Select a server or a virtual hard disk on which to install roles and features.

☒ Select a server from the server pool☐ Select a virtual hard disk

Server Pool

Filter:

Name	IP Address	Operating System
CMTP.RAMLAN.CA	192.168.0.193	Microsoft Windows Server 2019 Datacenter

1 Computer(s) found

This page shows servers that are running Windows Server 2012 or a newer release of Windows Server, and that have been added by using the Add Servers command in Server Manager. Offline servers and newly-added servers from which data collection is still incomplete are not shown.

< Previous

Next >

Install

Cancel

Select server roles

DESTINATION SERVER
CMTP.RAMLAN.CA

Before You Begin

Installation Type

Server Selection

Server Roles

Features

WDS

Role Services

Confirmation

Results

Select one or more roles to install on the selected server.

Roles

- ☐ Active Directory Domain Services
- ☐ Active Directory Federation Services
- ☐ Active Directory Lightweight Directory Services
- ☐ Active Directory Rights Management Services
- ☐ Device Health Attestation
- ☐ DHCP Server
- ☐ DNS Server
- ☐ Fax Server
- ☒ File and Storage Services (2 of 12 installed)
- ☐ Host Guardian Service
- ☐ Hyper-V
- ☐ Network Controller
- ☐ Network Policy and Access Services
- ☐ Print and Document Services
- ☐ Remote Access
- ☐ Remote Desktop Services
- ☐ Volume Activation Services
- ☒ Web Server (IIS) (19 of 43 installed)
- ☒ Windows Deployment Services
- ☒ Windows Server Update Services (2 of 3 installed)

Description

Windows Deployment Services provides a simplified, secure means of rapidly and remotely deploying Windows operating systems to computers over the network.

< Previous

Next >

Install

Cancel

Select features

DESTINATION SERVER
CMTP.RAMLAN.CA

Before You Begin

Installation Type

Server Selection

Server Roles

Features

WDS

Role Services

Confirmation

Results

Select one or more features to install on the selected server.

Features

- ☒ .NET Framework 3.5 Features (1 of 3 installed)
- ☒ .NET Framework 4.7 Features (Installed)
- ☒ Background Intelligent Transfer Service (BITS) (Inst
- ☐ BitLocker Drive Encryption
- ☐ BitLocker Network Unlock
- ☐ BranchCache
- ☐ Client for NFS
- ☐ Containers
- ☐ Data Center Bridging
- ☐ Direct Play
- ☐ Enhanced Storage
- ☐ Failover Clustering
- ☐ Group Policy Management
- ☐ Host Guardian Hyper-V Support
- ☐ I/O Quality of Service
- ☐ IIS Hostable Web Core
- ☐ Internet Printing Client
- ☐ IP Address Management (IPAM) Server
- ☐ iSNS Server service

Description

.NET Framework 3.5 combines the power of the .NET Framework 2.0 APIs with new technologies for building applications that offer appealing user interfaces, protect your customers' personal identity information, enable seamless and secure communication, and provide the ability to model a range of business processes.

< Previous

Next >

Install

Cancel

WDS

DESTINATION SERVER
CMTP.RAMLAN.CA

Before You Begin

Installation Type

Server Selection

Server Roles

Features

WDS

Role Services

Confirmation

Results

You can use Windows Deployment Services to install and configure Microsoft Windows operating system remotely on computers that are PXE-enabled. Windows Deployment Services replaces Remote Installation Services (RIS) and assists with the rapid adoption and deployment of Windows. The Windows Deployment Services MMC snap-in allows you to manage all aspects of Windows Deployment Services. Windows Deployment Services also provides end-users with an experience that is consistent with Windows Setup.

Things to note:

- Deployment Server requires that DHCP and DNS services are available on your network. Transport Server does not require any additional roles or services. Both of these services require an NTFS partition for the file store.
- Before you begin, you need to configure Windows Deployment Services by running either the Windows Deployment Services Configuration Wizard or WDSUtil.exe. You will also need to add at least one boot image and one install image to the image store.
- To install Windows operating systems from a Windows Deployment Services server, either the client computers must be PXE-enabled, or you must use the Windows Server 2008 R2 version of Windows Preinstallation Environment (Windows PE).

< Previous

Next >

Install

Cancel

Select role services

DESTINATION SERVER
CMTP.RAMLAN.CA

Before You Begin

Installation Type

Server Selection

Server Roles

Features

WDS

Role Services

Confirmation

Results

Select the role services to install for Windows Deployment Services

Role services

- ☒ Deployment Server
- ☒ Transport Server

Description

Deployment Server provides the full functionality of Windows Deployment Services, which you can use to configure and remotely install Windows operating systems. With Windows Deployment Services, you can create and customize images and then use them to reimage computers. Deployment Server is dependent on the core parts of Transport Server.

< Previous

Next >

Install

Cancel

Confirm installation selections

DESTINATION SERVER
CMTP.RAMLAN.CA

Before You Begin

Installation Type

Server Selection

Server Roles

Features

WDS

Role Services

Confirmation

Results

To install the following roles, role services, or features on selected server, click Install.

- ☒ Restart the destination server automatically if required

Optional features (such as administration tools) might be displayed on this page because they have been selected automatically. If you do not want to install these optional features, click Previous to clear their check boxes.

Remote Server Administration Tools
 Role Administration Tools
 Windows Deployment Services Tools

Windows Deployment Services
 Deployment Server
 Transport Server

[Export configuration settings](#)
[Specify an alternate source path](#)

< Previous

Next >

Install

Cancel

Installation progress

DESTINATION SERVER
CMTP.RAMLAN.CA

Before You Begin

Installation Type

Server Selection

Server Roles

Features

WDS

Role Services

Confirmation

Results

View installation progress



Feature installation

Installation succeeded on CMTP.RAMLAN.CA.

Remote Server Administration Tools
 Role Administration Tools
 Windows Deployment Services Tools

Windows Deployment Services
 Deployment Server
 Transport Server



You can close this wizard without interrupting running tasks. View task progress or open this page again by clicking Notifications in the command bar, and then Task Details.

[Export configuration settings](#)

< Previous

Next >

Close

Cancel

Extend Schema:

This is not required since we have production server running – yet I did run extadsch.exe




DC1 > WD5TB (E:) > Trekstor Backup Jul 2017 > 2019 Preview Softwares > TP1810 > SMSSETUP > BIN > :

Name	Date modified	Type	Size
EasAfwSettings.xml	12-Oct-2018 7:14 ...	XML Document	57 KB
EasDisc.dll	12-Oct-2018 7:14 ...	Application extens...	152 KB
EasSettings.xml	12-Oct-2018 7:14 ...	XML Document	51 KB
EditionUpgradeSettings.xml	12-Oct-2018 7:14 ...	XML Document	11 KB
EdpSettings.xml	12-Oct-2018 7:14 ...	XML Document	52 KB
EmailSettings.xml	12-Oct-2018 7:14 ...	XML Document	60 KB
EncryptionComplianceSettings.xml	12-Oct-2018 7:14 ...	XML Document	3 KB
enrollsrv.dll	12-Oct-2018 7:14 ...	Application extens...	146 KB
enrollsrv.msi	12-Oct-2018 7:16 ...	Windows Installer ...	6,500 KB
enrollweb.dll	12-Oct-2018 7:14 ...	Application extens...	67 KB
enrollweb_enu.msi	12-Oct-2018 7:16 ...	Windows Installer ...	6,572 KB
EntrustCAPProvider.dll	12-Oct-2018 7:14 ...	Application extens...	790 KB
EPCtrlMgr.dll	12-Oct-2018 7:14 ...	Application extens...	37 KB
EPMgr.dll	12-Oct-2018 7:14 ...	Application extens...	51 KB
extadsch.exe	12-Oct-2018 7:14 ...	Application	43 KB


```
ExtADSch.log - Notepad
File Edit Format View Help
<11-19-2018 15:41:24> Modifying Active Directory Schema - with SMS extensions.
<11-19-2018 15:41:25> DS Root:CN=Schema,CN=Configuration,DC=RAMLAN,DC=CA
<11-19-2018 15:41:25> Attribute cn=MS-SMS-Site-Code already exists.
<11-19-2018 15:41:25> Attribute cn=MS-SMS-Assignment-Site-Code already exists.
<11-19-2018 15:41:25> Attribute cn=MS-SMS-Site-Boundaries already exists.
<11-19-2018 15:41:25> Attribute cn=MS-SMS-Roaming-Boundaries already exists.
<11-19-2018 15:41:25> Attribute cn=MS-SMS-Default-MP already exists.
<11-19-2018 15:41:25> Attribute cn=MS-SMS-Device-Management-Point already exists.
<11-19-2018 15:41:25> Attribute cn=MS-SMS-MP-Name already exists.
<11-19-2018 15:41:25> Attribute cn=MS-SMS-MP-Address already exists.
<11-19-2018 15:41:25> Attribute cn=MS-SMS-Health-State already exists.
<11-19-2018 15:41:25> Attribute cn=MS-SMS-Source-Forest already exists.
<11-19-2018 15:41:25> Attribute cn=MS-SMS-Ranged-IP-Low already exists.
<11-19-2018 15:41:25> Attribute cn=MS-SMS-Ranged-IP-High already exists.
<11-19-2018 15:41:25> Attribute cn=MS-SMS-Version already exists.
<11-19-2018 15:41:25> Attribute cn=MS-SMS-Capabilities already exists.
<11-19-2018 15:41:26> Class cn=MS-SMS-Management-Point already exists.
<11-19-2018 15:41:26> Located LDAP://cn=MS-SMS-Management-Point,CN=Schema,CN=Configuration,DC=RAMLAN,DC=CA
<11-19-2018 15:41:27> Successfully updated class LDAP://cn=MS-SMS-Management-Point,CN=Schema,CN=Configuration,DC=RAMLAN,DC=CA.
<11-19-2018 15:41:27> Class cn=MS-SMS-Server-Locator-Point already exists.
<11-19-2018 15:41:27> Located LDAP://cn=MS-SMS-Server-Locator-Point,CN=Schema,CN=Configuration,DC=RAMLAN,DC=CA
<11-19-2018 15:41:30> Successfully updated class CN=Schema,CN=Configuration,DC=RAMLAN,DC=CA.
<11-19-2018 15:41:30> Class cn=MS-SMS-Site already exists.
<11-19-2018 15:41:30> Located LDAP://cn=MS-SMS-Site,CN=Schema,CN=Configuration,DC=RAMLAN,DC=CA
<11-19-2018 15:41:31> Successfully updated class LDAP://cn=MS-SMS-Site,CN=Schema,CN=Configuration,DC=RAMLAN,DC=CA.
<11-19-2018 15:41:31> Class cn=MS-SMS-Roaming-Boundary-Range already exists.
<11-19-2018 15:41:31> Located LDAP://cn=MS-SMS-Roaming-Boundary-Range,CN=Schema,CN=Configuration,DC=RAMLAN,DC=CA
<11-19-2018 15:41:32> Successfully updated class LDAP://cn=MS-SMS-Roaming-Boundary-Range,CN=Schema,CN=Configuration,DC=RAMLAN,DC=CA.
<11-19-2018 15:41:33> Successfully extended the Active Directory schema.
```

Now we have completed all the task required for TP1810 install. To be on the safe side, I restarted the server. Copied TP1810 files and executed splash.hta

» CMTMP » Downloads » TP1810 »

	Name	Date modified	Type	Size
	 AUTORUN	19-Nov-2018 3:22 ...	File folder	
	 SMSSETUP	19-Nov-2018 3:23 ...	File folder	
	 splash.hta	12-Oct-2018 7:14 ...	HTML Application	34 KB

System Center Configuration Manager Setup Wizard 5.0.8735.1000

 **Before You Begin**

This wizard walks you through the steps necessary to install or upgrade Configuration Manager. Setup also provides you with options to recover a site, perform site maintenance, and uninstall the site.

Before you run this wizard:

1. Verify that you have a supported Microsoft SQL Server installation available for Configuration Manager.
2. Identify the FQDN of the computer that is running Microsoft SQL Server.
3. Confirm that the computers for Configuration Manager site systems meet the minimum system requirements.
4. Read the [release notes online](#) for important information and for links to supported versions and system requirements.

WARNING: This program is protected by copyright law and international treaties.

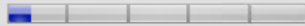
Unauthorized reproduction or distribution of this program, or any portion of it, may result in severe civil and criminal penalties, and will be prosecuted to the maximum extent possible under law.

< Previous

Next >

Cancel

Getting Started



Available Setup Options

Setup has not detected an existing installation of site server, site system, or Configuration Manager console on this computer.

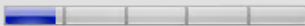
- ☒ Install a Configuration Manager primary site
 - ☒ Use typical installation options for a stand-alone primary site
 - Install a Configuration Manager primary site
 - Use default installation path
 - Configure local SQL Server with default settings
 - Enable a local management point for Configuration Manager
 - Enable a local distribution point for Configuration Manager
- ☐ Install a Configuration Manager central administration site
- ☐ Upgrade this Configuration Manager site
- ☐ Recover a site
- ☐ Perform site maintenance or reset this site
- ☐ Uninstall this Configuration Manager site

< Previous

Next >

Cancel

Product License Terms



You must accept the License Terms and Privacy Statement to continue installation of System Center Configuration Manager.

[View the License Terms](#)[View the Privacy Statement](#)☒ I accept these License Terms and Privacy Statement.

During Setup, Configuration Manager will download and store the following software on the site server and then automatically install the software on the site systems or client computers as required.

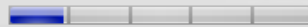
[View the Microsoft SQL Server Express License Terms](#)☒ I accept these License Terms.[View the Microsoft SQL Server Native Client License Terms](#)☒ I accept these License Terms.

< Previous

Next >

Cancel

Prerequisite Downloads



Setup requires prerequisite files. Setup can automatically download the files to a location that you specify, or you can use files that have been downloaded previously.

☒ Download required files

Example: \\ServerName\ShareName or C:\Downloads

Path:

C:\Users\administrator.RAMLAN\Downloads

Browse...

☐ Use previously downloaded files

Example: \\ServerName\ShareName or C:\Downloads

Path:

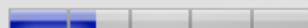
Browse...

< Previous

Next >

Cancel

Site and Installation Settings



Specify a site code that uniquely identifies this Configuration Manager site in your hierarchy.

Site code:

TP1

Specify a site name that helps to identify the site. Example: Contoso Headquarters Site

Site name:

Technical Preview Config Manager Site TO

Note: The site code must be unique in the Configuration Manager hierarchy and cannot be changed after you install the site.

Installation folder:

C:\Program Files\Microsoft Configuration Manager

Browse...

Specify whether to install the Configuration Manager console to manage the Configuration Manager site from this computer. You can remotely manage the site when you do not install the Configuration Manager console.

☒ Install the Configuration Manager console

< Previous

Next >

Cancel

Diagnostic and Usage Data



Microsoft automatically collects usage data over the internet. Microsoft uses this data to: a) help improve your installation or upgrade experience, and b) improve the quality and security of Microsoft products and services. This feature is set at the "Enhanced" level by default. This level includes all the information in the "Basic" level. "Basic" includes data about the hierarchy required for your installation or upgrade like site data (operating system version, time zone), site role (site #, SSL State), and database performance metrics (CPU count). In addition, the "Enhanced" level collects feature-specific data (frequency and duration of use), Configuration Manager client settings (component name, state and certain settings), and basic information about software updates. Configuration Manager does not collect site codes or names, IP addresses, your name, physical addresses, or email addresses on the Basic or Enhanced levels.

Choice and Control:

There are three levels of Usage Data (Basic, Enhanced, and Full). Administrators can change the level of data collected in the Usage Data settings in the Configuration Manager console.

[Learn more about Usage Data levels and settings](#)

During installation of the Configuration Manager Console, you will get an opportunity to choose to participate in the Customer Experience Improvement Program (CEIP). Although CEIP is turned off by default, if it was previously enabled, it will remain enabled. Read the [CEIP privacy statement](#) online.

[Privacy Statement for System Center Configuration Manager](#)

< Previous

Next >

Cancel

Service Connection Point Setup



Keep Configuration Manager up-to-date by connecting to the Configuration Manager cloud service. Connecting to the service enables your deployment to download updates and new features.

☒ Yes, let's get connected (recommended)

Select a server to use as the service connection point (requires internet access):

CMP.RAMLAN.CA

☐ Use a proxy server when synchronizing information from the Internet

Address:

Port:

☐ Skip this for now

To connect to the service after setup completes, install a service connection point site system role.

To use features like Conditional Access, Microsoft Store for Business or on-premises mobile device management (MDM), add your Microsoft Intune subscription to Configuration Manager after setup completes.

< Previous

Next >

Cancel

Settings Summary



Setup will install Configuration Manager with the following settings.

You have selected to install this site as a stand-alone primary site. You can expand this site into a hierarchy at a later time by installing central administration site.

Settings:

Setup Component	Component Details
Database Name	CM_TP1
SMS Provider	CMTP.RAMLAN.CA
Management Point	CMTP.RAMLAN.CA
Protocol for Management Point	HTTP
Distribution Point	CMTP.RAMLAN.CA
Protocol for Distribution Point	HTTP
Service Connection Point server name	CMTP.RAMLAN.CA

To change these settings, click Previous. To apply the settings and start the installation prerequisite check, click Next.

< Previous

Next >

Cancel

Prerequisite Check



Setup is checking for potential installation problems. If problems are found, Setup will display details about how to resolve them.

Details:

Prerequisite	Status	System
Verify site server permissions to publish to Active Dire	Warning	CMTP.RAMLAN.CA
SQL Server Native Client version	Warning	CMTP.RAMLAN.CA
SQL Server security mode	Warning	CMTP.RAMLAN.CA
Configuration for SQL Server memory usage	Warning	CMTP.RAMLAN.CA
SQL Server process memory allocation	Warning	CMTP.RAMLAN.CA

Prerequisite checking has completed.

Select an item to display details and information about how to resolve the problem. For a listing of all prerequisite check results, see ConfigMgrPrereq.log.

You can ignore above warnings relating to memory and AD permission.

Run Check

< Previous

Begin Install

Cancel

Install

Overall progress

Elapsed time: 00:00:01:24

- ✓ Evaluating setup environment
- ✓ Evaluating and installing Configuration Manager dependencies
- ✓ Generating public key and SQL Server certificate
- ✓ Removing pre-existing Configuration Manager services and registry keys
- ✓ Setting up server accounts
- ✓ Updating registry
- ⚙ Setting up the SQL Server database

View Log

< Previous Next > Cancel

The screenshot shows two windows side-by-side. The left window is the 'System Center Configuration Manager Setup Wizard 5.0.8735.1000'. It has a title bar and a menu bar with 'Install'. Below the menu bar is a progress bar with five segments, all of which are blue, indicating completion. The main area shows 'Core setup has completed' with a green progress bar. Below this, a list of tasks is shown with green checkmarks: 'Installing Inbox Manager', 'Installing policy provider', 'Installing management point control manager', 'Setting up management point', 'Installing boot image package', 'Configuring data replication service', 'Installing Configuration Manager console', and 'Creating management point'. At the bottom, there is a 'View Log' button and navigation buttons '< Previous', 'Next >', and 'Close'. The right window is the 'Configuration Manager Trace Log Tool - [C:\ConfigMgrSetup.log]'. It has a title bar and a menu bar with 'File', 'Tools', 'Window', and 'Help'. Below the menu bar is a toolbar with icons for file operations. The main area is divided into two panes. The left pane is titled 'Log Text' and contains a list of log entries: 'INFO: End monitoring - SMS_SITE_CONTROL_MANAGER.', 'INFO: Begin monitoring - SMS_HIERARCHY_MANAGER.', 'INFO: Successfully completed monitoring.', 'INFO: End monitoring - SMS_HIERARCHY_MANAGER.', 'INFO: Begin monitoring - SMS_INBOX_MANAGER.', 'INFO: Successfully completed monitoring.', 'INFO: End monitoring - SMS_INBOX_MANAGER.', 'INFO: Begin monitoring - SMS_POLICY_PROVIDER.', 'INFO: Successfully completed monitoring.', 'INFO: End monitoring - SMS_POLICY_PROVIDER.', 'INFO: Begin monitoring - SMS_MP_CONTROL_MANAGER.', 'INFO: Successfully completed monitoring.', and 'INFO: End monitoring - SMS_MP_CONTROL_MANAGER.'. The right pane is a table with columns 'Component', 'Date/Time', and 'Thread'. It contains the same log entries as the left pane, with the 'Component' column showing 'Configuration Manager Set' and the 'Date/Time' and 'Thread' columns showing the timestamp and thread ID respectively.



Microsoft System Center Configuration Manager

System Center Configuration Manager

Version 1810 for Technical Preview

Console version: 5.1810.1067.1000

Site version: 5.0.8735.1000

Support ID:

edICR4Eif+ZEGZ0du9iHPyP0OSpqvCyYrP3RexTH2dA=

© Microsoft. All rights reserved.

This program is licensed.

Warning: This computer program is protected by copyright law and international treaties. Unauthorized reproduction or distribution of this program, or any portion of it, may result in severe civil and criminal penalties, and will be prosecuted to the maximum extent possible under the law.

OK

Search

All Objects Scope

Saved Searches Options

Search Settings

Save Current Search Save

Save Current Search As

Close

Active Search

What's New

Overview

Assets and Compliance

Software Library

Monitoring

Administration

Community

System Center Configuration Manager 1810 Tech Preview

Welcome to update 1810 for System Center Configuration Manager Technical Preview. Below you can find information about some of the new features and scenarios that are now available for you to try. You can also view which of the new scenarios you have completed for each feature. [Read more](#) about the latest changes in the Technical Preview build.

Please continue to give us feedback! To report any issues you encounter with the latest functionality included in this Technical Preview, use the [Microsoft Connect](#) website. To request a new feature or enhancement, use the [Configuration Manager UserVoice](#) site.

What's New in 1810

Progress: 3

Boundary group relationship support of task sequences

During a task sequence execution, the client is now able to determine the correct order of precedence for content retrieval fall-back based on boundary group relationships.

Convert applications to MSIX

Convert your existing Windows Installer (.msi) applications to the MSIX format.

Documentation node

Curated content about System Center Configuration Manager (Current Branch).

Improvement to Co-management reporting

You can now view an enhanced dashboard with information about Co-management in your environment.

Improvements to driver maintenance

Driver packages now have additional metadata fields to allow an admin to tag driver packages with information to assist in general housekeeping and to identify old, and duplicate drivers that can be deleted.

Features 22 items

Name	Feature Type	Status	Description
Package Conversion Manager	Pre-release	On	Package Conversion Manager (PCM) now supports Configuration Manager current branch. You can use PCM to convert classic software...
Device Health Attestation assessment for compliance policies for conditional access	Release	On	Use Device Health Attestation status as a compliance policy rule for conditional access to company resources.
PFX Create	Release	On	Create and deploy PFX Certificates for Microsoft or Entrust Certification Authorities.
Mobile apps for co-managed devices	Release	On	Manage mobile apps with Microsoft Intune while continuing to use Configuration Manager to deploy Windows desktop applications.
Enable third party update support on clients	Release	On	Enables configuration of allow signed third party updates policy and installation of Windows Server Update Services code signing ce...
Support for Cisco AnyConnect 4.0.07x and later for iOS	Release	On	Admins can create iOS VPN profiles supported by the newer AnyConnect client, labeled Cisco AnyConnect in the iOS VPN workflow....
Passport for Work	Release	On	Admin can target and deploy Passport for Work policy for domain-joined Windows 10 devices which are also registered with on-pre...
Windows Defender Exploit Guard policy	Release	On	You can control Windows Defender Exploit Guard policy.
Surface Driver Updates	Release	On	Manage Surface Driver Updates.
Microsoft Operations Management Suite (OMS) Connector	Release	On	Sync data such as collections from Configuration Manager to OMS.
Windows Defender Application Control	Release	On	Lets you lock down Windows 10 computers so that they can only run trusted apps and programs.
Create and run scripts	Release	On	Create and run PowerShell scripts from the Configuration Manager console.
Client Peer Cache	Release	On	Client Peer Cache is a built-in Configuration Manager solution for clients to share content with other clients directly from their local...
Approve application requests for users per device	Release	On	User-based application requests are now approved only for the device from where the user submitted the request
Run Task Sequence Step	Release	On	This is a new step in the task sequence to run another task sequence, which creates a parent-child relationship between two task se...
Server groups	Release	On	Control settings for software updates in server groups, including the order and percentage of devices that can be updated at any on...
Conditional access for managed PCs	Release	On	To help secure Office 365 access and other services on PCs enrolled with Configuration Manager, use conditional access. Conditions...
Task Sequence content pre-caching	Release	On	Pre-cache content on client for available deployment for OS Upgrade task sequences with conditional steps.
Site Server High Availability (Standalone Site Support)	Release	On	You can now add a primary site server in 'passive mode' to your standalone site to increase availability.
Data warehouse service point	Release	On	Use the data warehouse service point to periodically copy data from your Configuration Manager site database to another database...
Cloud Management Gateway	Release	On	Provides a simple way to manage ConfigMgr clients on the Internet. The gateway is deployed to Microsoft Azure and requires an Az...
VPN for Windows 10	Release	On	You can use Microsoft Native providers for computers with the ConfigMgr client. These include Microsoft Automatic, PPTP, L2TP an...

Boundary Creation:

I created IP Address Range Boundary and TP Boundary Group as detailed below

Overview ► Hierarchy Configuration ► Boundaries

Boundaries 1 items

Icon	Boundary	Type	Description	Group Count	Date Created
	192.168.1.2-192.168.1.254	IP address range	TP TO	1	20-Nov-2018 12:17 PM

192.168.1.2-192.168.1.254 Properties

General | Site Systems | Boundary Groups

Configure settings for this boundary

Description:

Type:

Starting IP address: . . .

Ending IP address: . . .

OK Cancel Apply

192.168.1.2-192.168.1.254 Properties



General Site Systems Boundary Groups

The following site systems are associated with this boundary.

Clients use these site systems as the content source location for content deployment. When content is not available on these site systems, clients might use different site systems if they are configured to allow clients use the site system as a fallback source location for content.

Site systems:

Filter...

Site System Name
CMTP.RAMLAN.CA

OK Cancel Apply

192.168.1.2-192.168.1.254 Properties



General Site Systems Boundary Groups

This shows all boundary groups that contain this boundary.

Boundary groups:

Filter...

Name	Description
TP Boundary	

Add... Remove



OK Cancel Apply


Boundary Group:

Overview ▸ Hierarchy Configuration ▸ Boundary Groups

< Boundary Groups 2 items

Search

Icon	Name	Member Count	Site System Count	Read-Only
	Default-Site-Boundary-Group<TP1>	0	1	No
	TP Boundary	1	1	No

 TP Boundary Properties ×

General References Relationships Options Security

Name:

Description:

The following boundaries are members of this boundary group.

Boundaries:

Filter...

Name	Description
192.168.1.2-192.168.1.254	TP TO

Add... Remove

OK Cancel Apply

TP Boundary Properties

GeneralReferencesRelationshipsOptionsSecurity

Site assignment

☒ Use this boundary group for site assignment

Set the site that ConfigMgr computer resources are assigned to during discovery. This also sets the site that performs client push installation. When a secondary site is selected, the secondary site performs client push installation, but clients always assign to the secondary site's parent primary site.

Assigned site:TP1-Technical Preview Config Manager Site TO

Select site system servers

Specify the site system servers that are associated with this boundary group, which clients should use for policy and content. You can specify management points, distribution points, state migration points, or software update points.

Site system servers:

Filter...

Server Name	Site
\\CMTP.RAMLAN.CA	TP1

Add...Remove

OKCancelApply

TP Boundary Properties

GeneralReferencesRelationshipsOptionsSecurity

Fallback relationships

Specify the fallback relationship that you would like this boundary group to have with others by adding a boundary group to the list below. If required, you can specify different times (in minutes) for different site system roles.

Fallback Boundary Group times per site system role:

Filter...

Boundary Group Name	Distribution Point	Software Update Point
Default-Site-Boundary-Group<TP1>	120	120

<>

ChangeAddRemove

OKCancelApply

TP Boundary Properties

×

GeneralReferencesRelationshipsOptionsSecurity

Select the options for your clients to follow in this boundary group.
[Learn more](#)

☒ Allow peer downloads in this boundary group

☒ During peer downloads, only use peers within the same subnet

☒ Prefer distribution points over peers within the same subnet

☐ Prefer cloud distribution points over distribution points

OKCancelApply

TP Boundary Properties

×

GeneralReferencesRelationshipsOptionsSecurity

The following administrative users have permission for this object from associated security roles and security scopes.

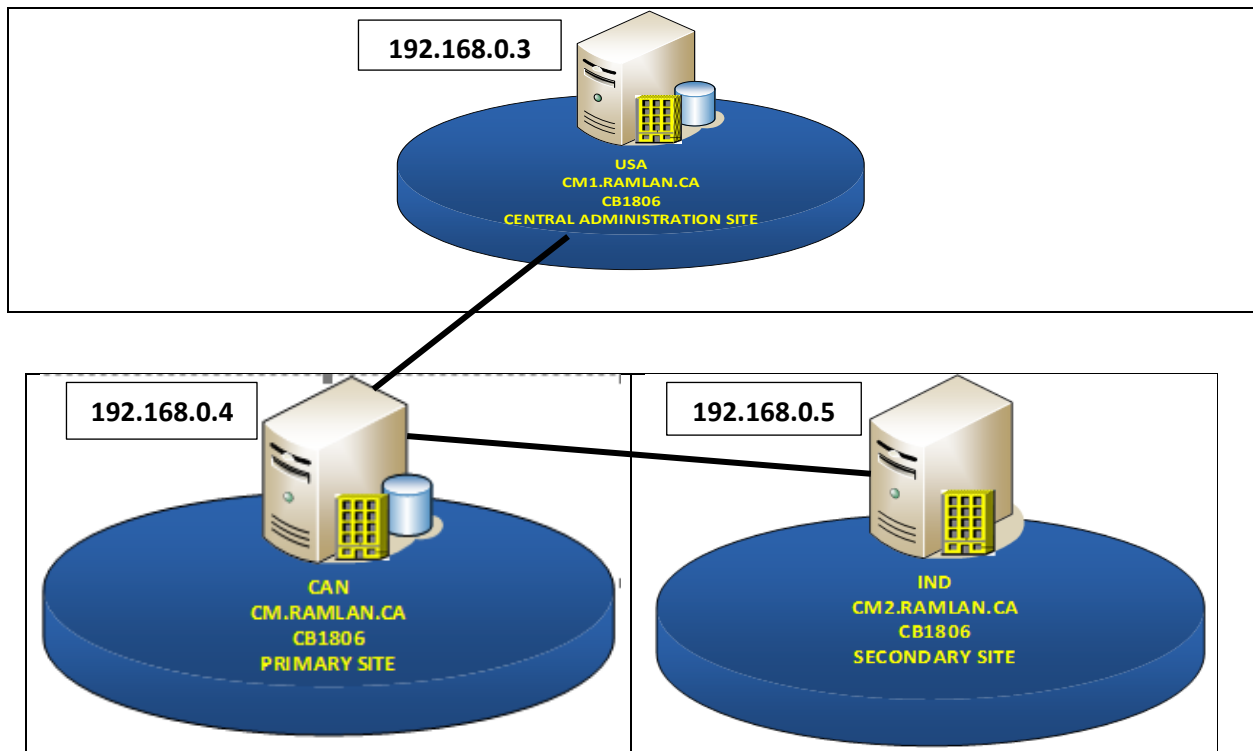
Administrative users:

Filter...

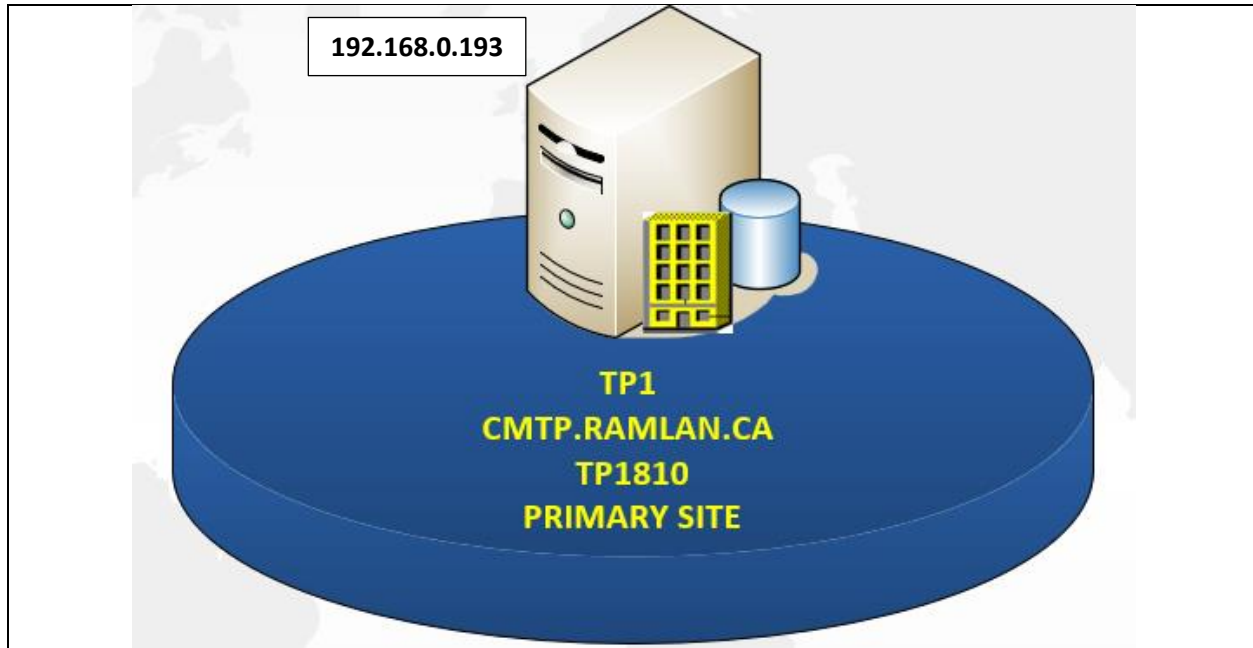
Name	Operations
RAMLAN\Administrator	Read, Modify, Delete, Set Security Scope, Creat...

OKCancelApply

My Home Lab Production Current Branch 1806 Setup:



My Home Lab Technical Preview 1810 Setup:



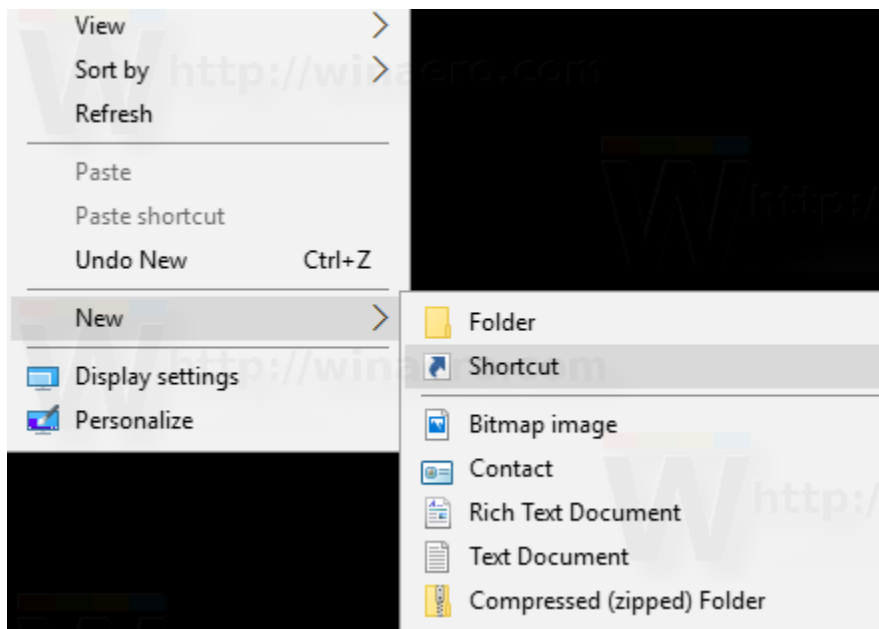
This concludes the whole process of installing technical preview edition 1810.

Thanks

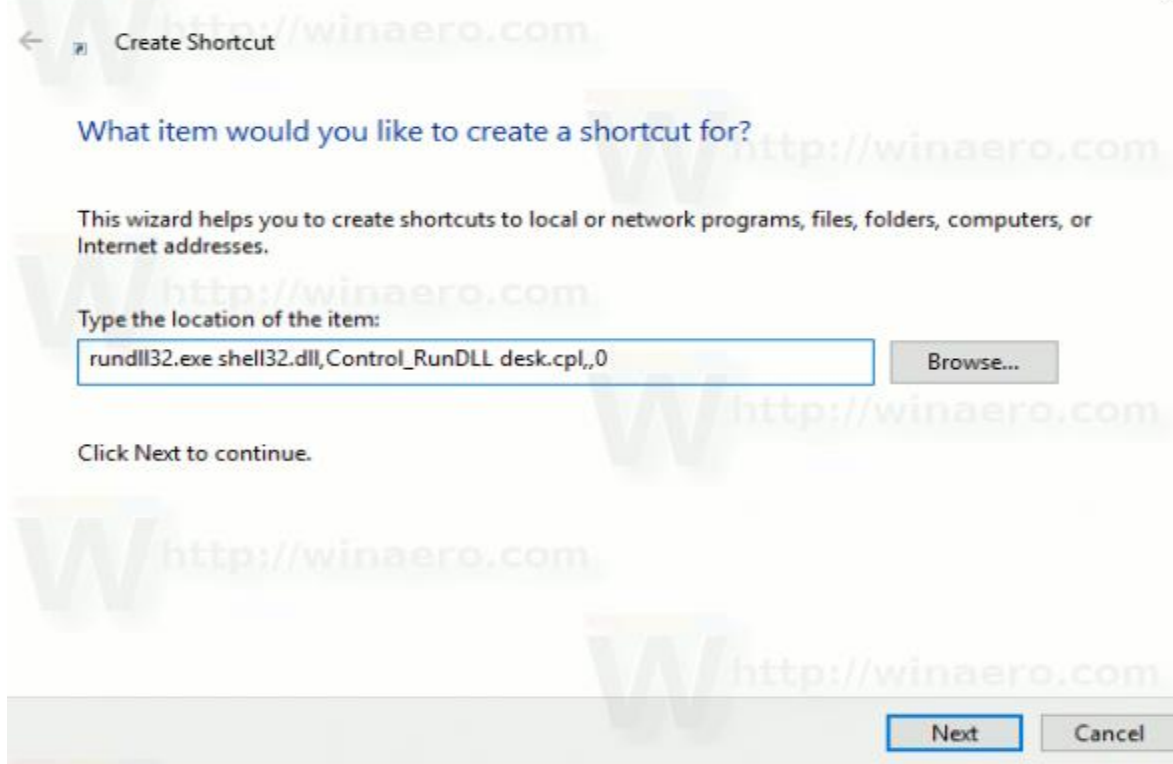
Ram Lan
20th Nov 2018

If you want to create desktop icon for Computer, Control Panel, Network, User Folder do the following:

Right click on the desktop – New – Short Cut

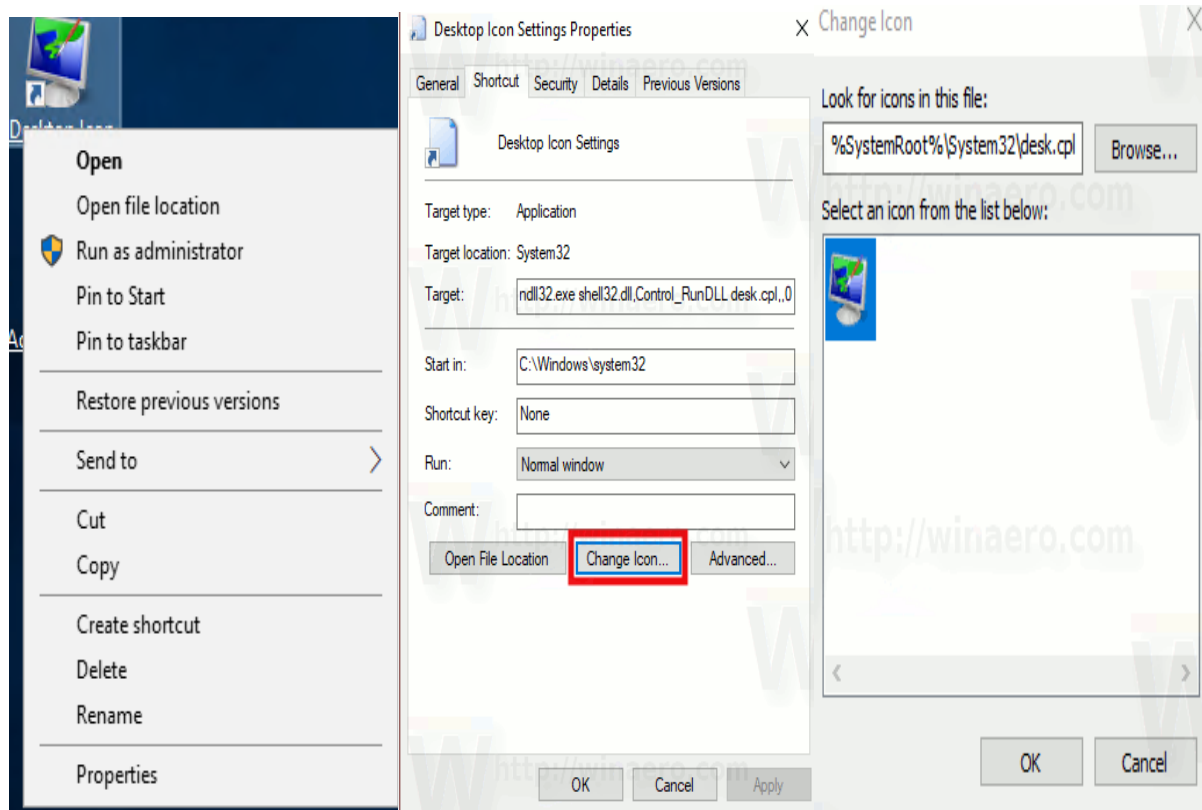


Type `rundll32.exe shell32.dll,Control_RunDLL desk.cpl,,0`



Click Next

Give it a name (Desktop Icon) – Right Click – Properties – Change Icon – Select desk.cpl - OK



Now open desktop icon to enable all the ICON you want on the desktop.

