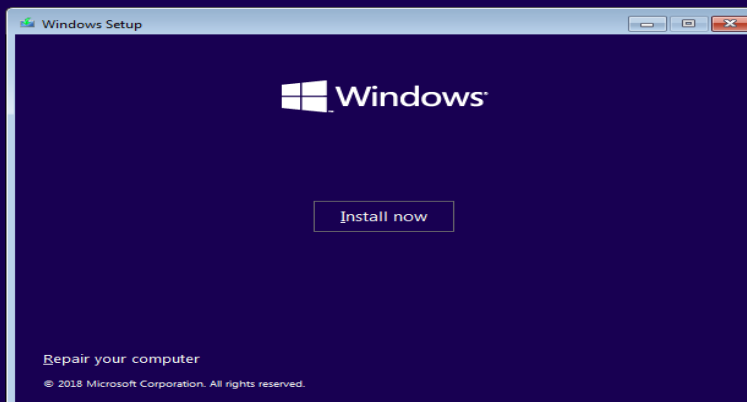
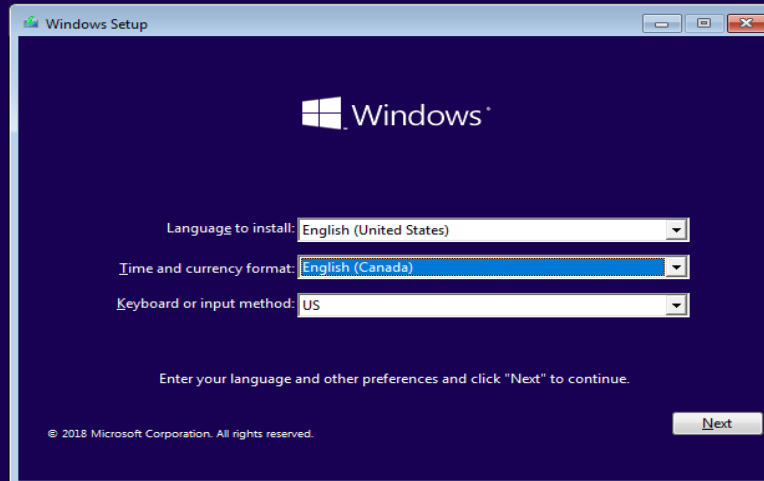


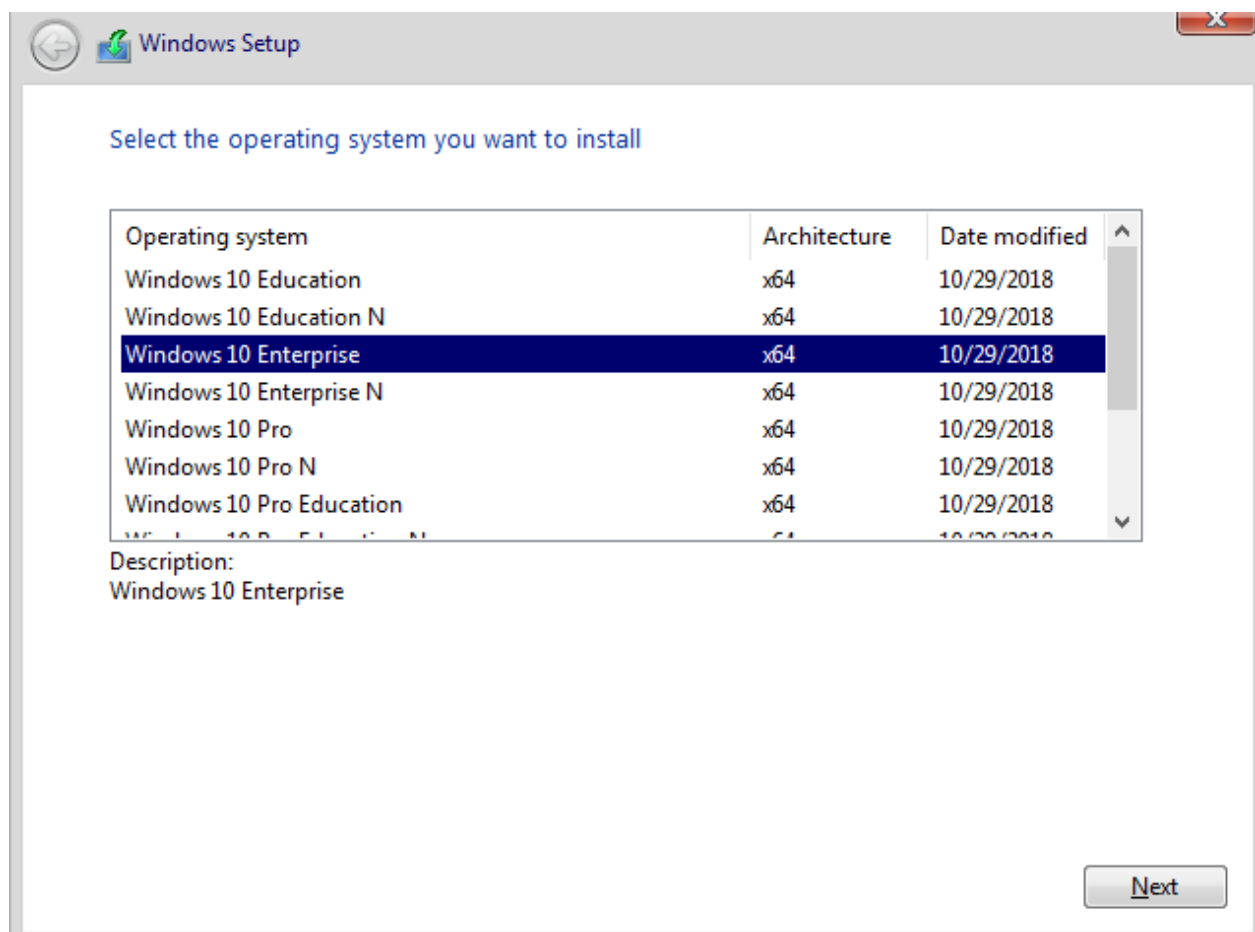
How to perform a clean install of Windows 10 1809 x64

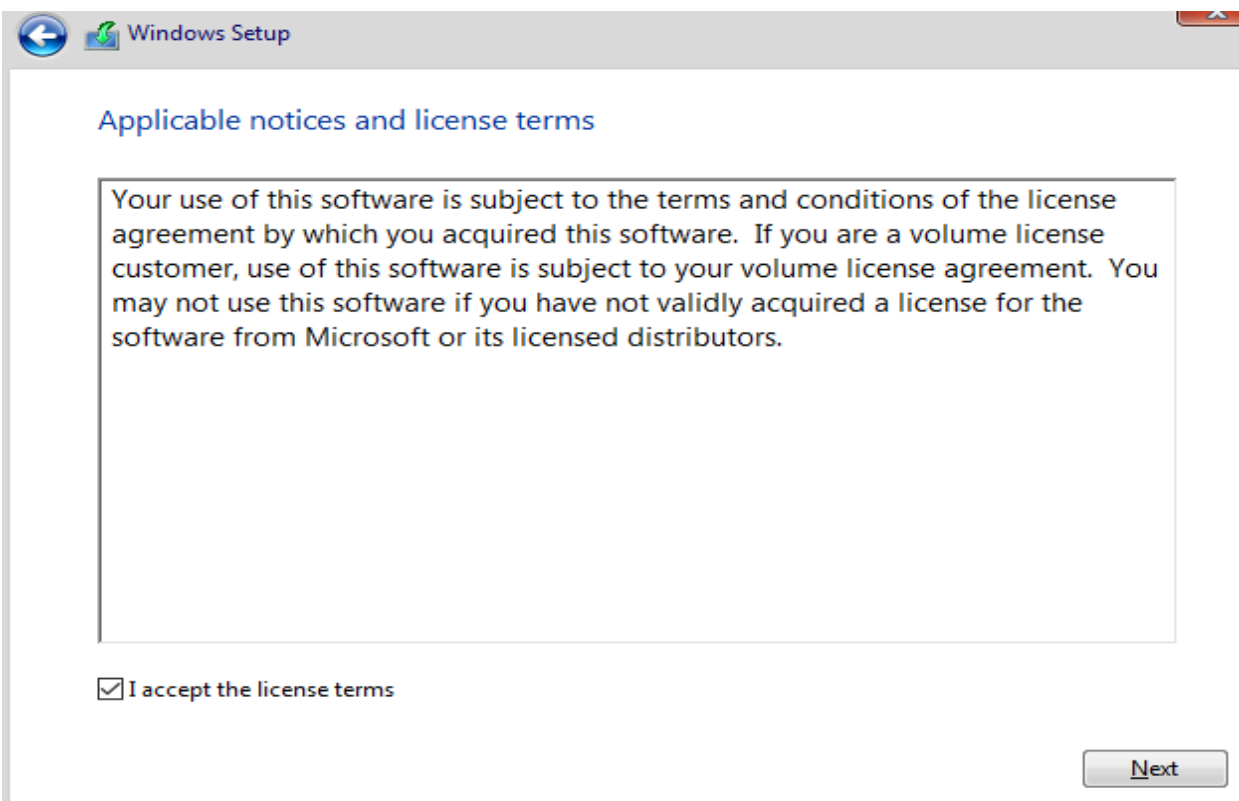
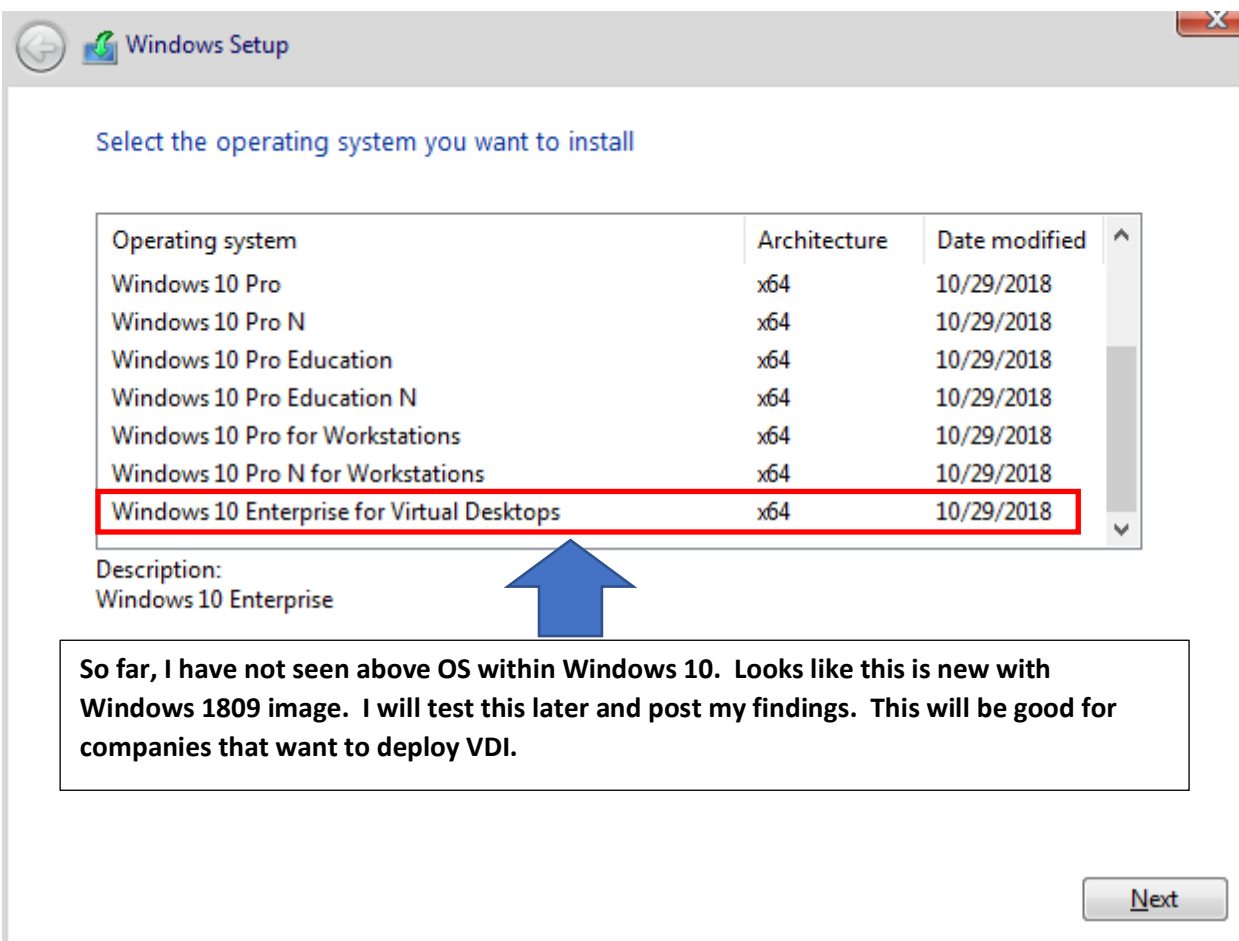
In this post, I will show you how to perform a clean install of Windows 10 1809 x64 on a virtual machine with 3GB memory and 127GB hard disk.

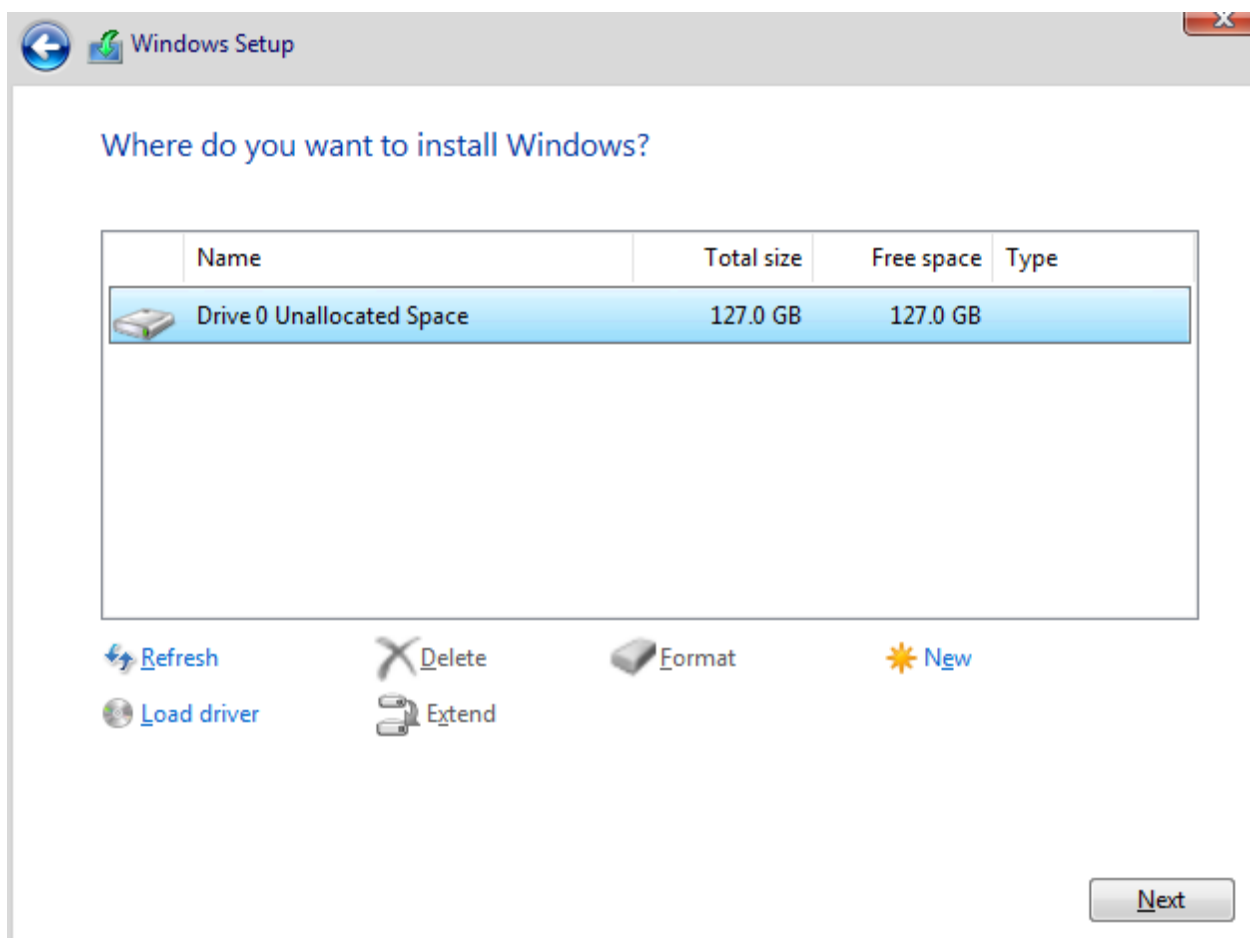
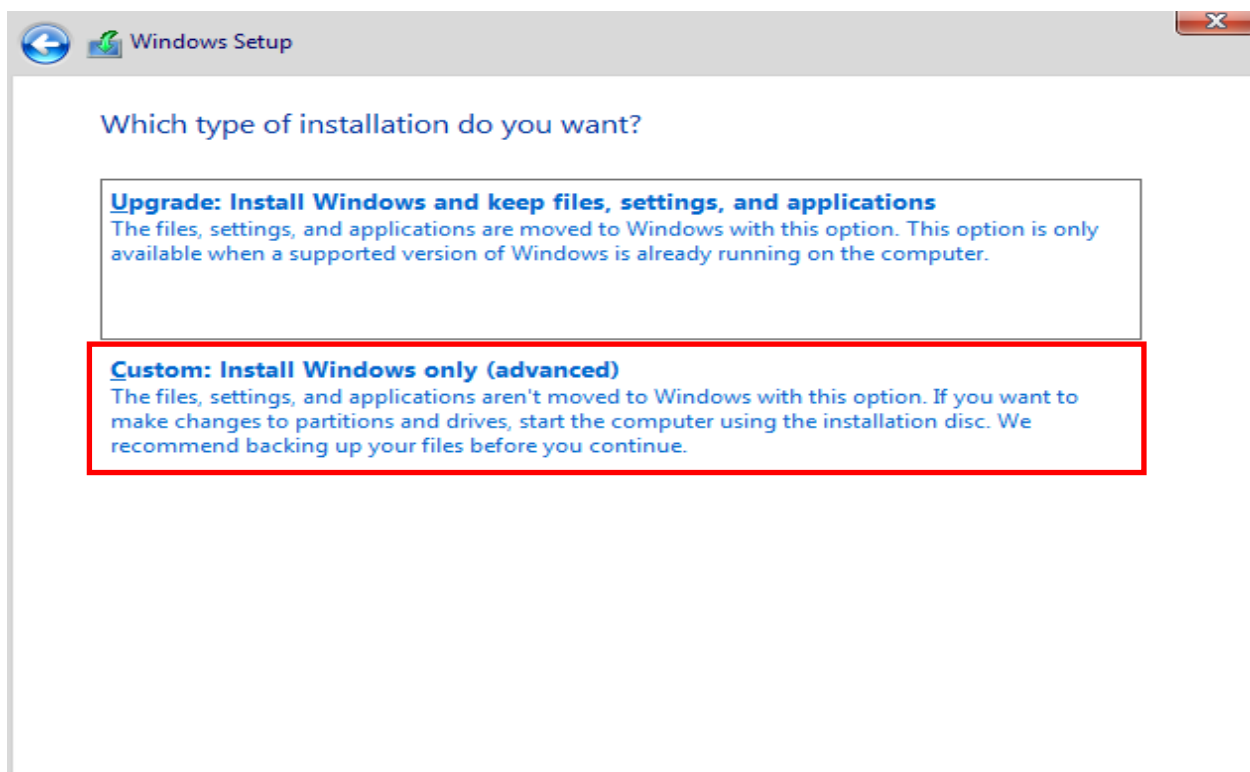
Create a bootable USB key and boot the VM from the key or using an ISO of Windows 10 1809 x64 and then follow below screen shot.



Setup is starting







Installing Windows

Status

Copying Windows files (0%)

Getting files ready for installation


Installing features

Installing updates

Finishing up

Installing Windows

Status

 Copying Windows files

Getting files ready for installation (0%)

Installing features

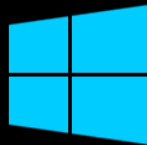
Installing updates

Finishing up

Installing Windows

Status

- ✓ Copying Windows files
- ✓ Getting files ready for installation
- ✓ Installing features
- ✓ Installing updates
- Finishing up





Starting services



Getting ready



Just a moment...

Let's start with region. Is this right?

Bulgaria

Burkina Faso

Burundi

Cabo Verde

Cambodia

Cameroon

Canada



Yes

Is this the right keyboard layout?

If you also use another keyboard layout, you can add that next.

US

Canadian Multilingual Standard

English (India)

Irish

Scottish Gaelic

United Kingdom

United States-Dvorak

Yes

Want to add a second keyboard layout?



Add layout

Skip



Now we have some important setup to do.



Now let's see what's new from Windows.



Sign in with Microsoft

Work or school account

Which account should I use?

Sign in with the username and password you use with Office 365 or other business services from Microsoft.

Domain join instead

[Privacy & cookies](#)

[Terms of use](#)

Next

Who's going to use this PC?

What name do you want to use?



Or, even better, use an online account

Next

Create a super memorable password

Make sure to pick something you'll absolutely remember.

A white password input field with a black border. The first eight characters are masked with black dots. A small eye icon is visible on the right side of the field.

Or, even better, use an online account

Next

Confirm your password

Type your password one last time

A white password input field with a black border. The first eight characters are masked with black dots. A small eye icon is visible on the right side of the field.

Or, even better, use an online account

Next



Just a moment...

Make Cortana your personal assistant?

Hey look, that's me, Cortana!

Can I have permission to use the info I need to do my best work?



To let Cortana provide personalized experiences and relevant suggestions in Microsoft products that offer Cortana experiences, including this device when your device is locked, Microsoft collects and uses information including your location and location history, voice input, speech patterns, contacts, searching history, relationships, calendar details, email, content and communication history from text messages, instant messages and apps, and other information on your device. In Microsoft Edge, Cortana uses your browsing history.

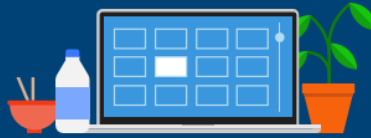
You can always tinker with what Cortana remembers in the Notebook and disable Cortana in Microsoft Edge.

[Learn more](#)

[Decline](#)

[Accept](#)

Do more across devices with activity history



If you want timeline and other Windows features to help you continue what you were doing, even when you switch devices, send Microsoft your activity history, which includes info about websites you browse and how you use apps and services. Select **Learn more** to find out how Microsoft products and services use this data to personalize experiences while respecting your privacy.

[Learn more](#)

No

Yes

Do more with your voice

Choose your settings, then select 'Accept' to save them. Check the 'Learn more' link for info on these settings, how to change them, how Windows Defender SmartScreen works, and the related data transfers and uses.



Use online speech recognition

Use your voice for dictation and to talk to Cortana and other apps that use Windows cloud-based speech recognition. Send Microsoft your voice data to help improve our speech services.



Don't use online speech recognition

You won't be able to use dictation or talk to Cortana or other apps that support Windows cloud-based speech recognition. You can still use the Windows Speech Recognition app and other speech services that don't rely on Windows cloud-based services.

[Learn more](#)

Accept

Let Microsoft and apps use your location

Choose your settings, then select 'Accept' to save them. Check the 'Learn more' link for info on these settings, how to change them, how Windows Defender SmartScreen works, and the related data transfers and uses.



Yes

Get location-based experiences like directions and weather. Let Windows & apps request your location. Microsoft will use location data to improve location services.



No

You won't be able to get location-based experiences like directions and weather or enjoy other services that require your location to work.

[Learn more](#)

Accept

Find my device

Choose your settings, then select 'Accept' to save them. Check the 'Learn more' link for info on these settings, how to change them, how Windows Defender SmartScreen works, and the related data transfers and uses.



Yes

Turn on Find my device (requires Microsoft account) and use your device's location data to help you find your device if you lose it.



No

Windows won't be able to help you keep track of your device if you lose it.

[Learn more](#)

Accept

Send diagnostic data to Microsoft

Choose your settings, then select 'Accept' to save them. Check the 'Learn more' link for info on these settings, how to change them, how Windows Defender SmartScreen works, and the related data transfers and uses.



Full

Send all Basic diagnostic data, along with info about the websites you browse and how you use apps and features, plus additional info about device health, device activity, and enhanced error reporting. Diagnostic data is used to help keep Windows secure and up to date, troubleshoot problems, and make product improvements. Regardless of whether you select Basic or Full, your device will be equally secure and will operate normally.



Basic

Send only info about your device, its settings and capabilities, and whether it is performing properly. Diagnostic data is used to help keep Windows secure and up to date, troubleshoot problems, and make product improvements. Regardless of whether you select Basic or

[Learn more](#)

[Accept](#)

Improve inking & typing

Choose your settings, then select 'Accept' to save them. Check the 'Learn more' link for info on these settings, how to change them, how Windows Defender SmartScreen works, and the related data transfers and uses.



Yes

Send inking and typing data to Microsoft to improve the language recognition and suggestion capabilities of apps and services running on Windows.



No

Don't use my data to help improve the language recognition and suggestion capabilities of apps and services running on Windows.

[Learn more](#)

[Accept](#)

Get tailored experiences with diagnostic data

Choose your settings, then select 'Accept' to save them. Check the 'Learn more' link for info on these settings, how to change them, how Windows Defender SmartScreen works, and the related data transfers and uses.



Yes

Let Microsoft offer you tailored experiences based on the diagnostic data you have chosen (either Basic or Full). Tailored experiences mean personalized tips, ads, and recommendations to enhance Microsoft products and services for your needs.



No

The tips, ads, and recommendations you see will be more generic and may be less relevant to you.

[Learn more](#)

[Accept](#)

Let apps use advertising ID

Choose your settings, then select 'Accept' to save them. Check the 'Learn more' link for info on these settings, how to change them, how Windows Defender SmartScreen works, and the related data transfers and uses.



Yes

Apps can use advertising ID to provide more personalized advertising in accordance with the privacy policy of the app provider.

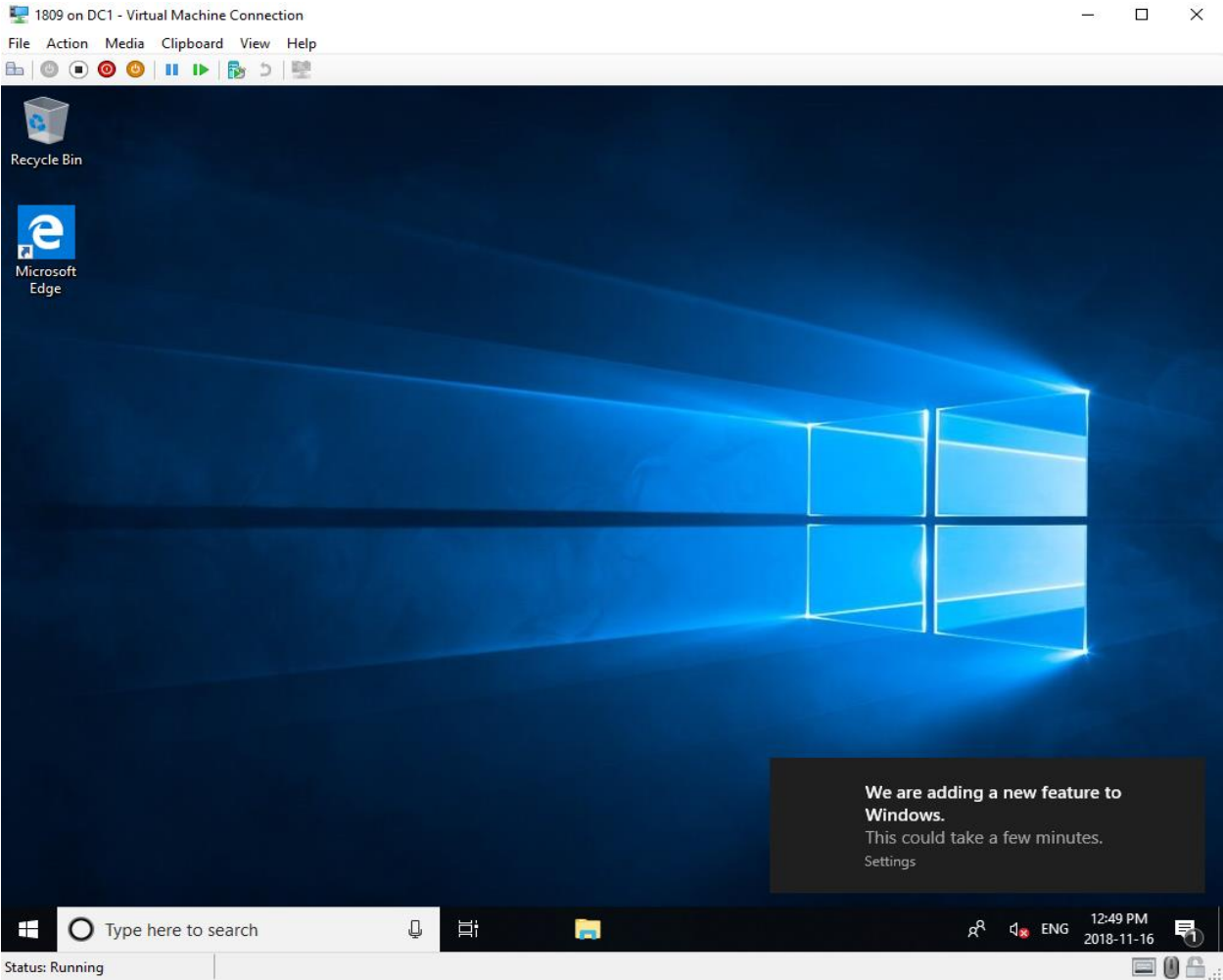
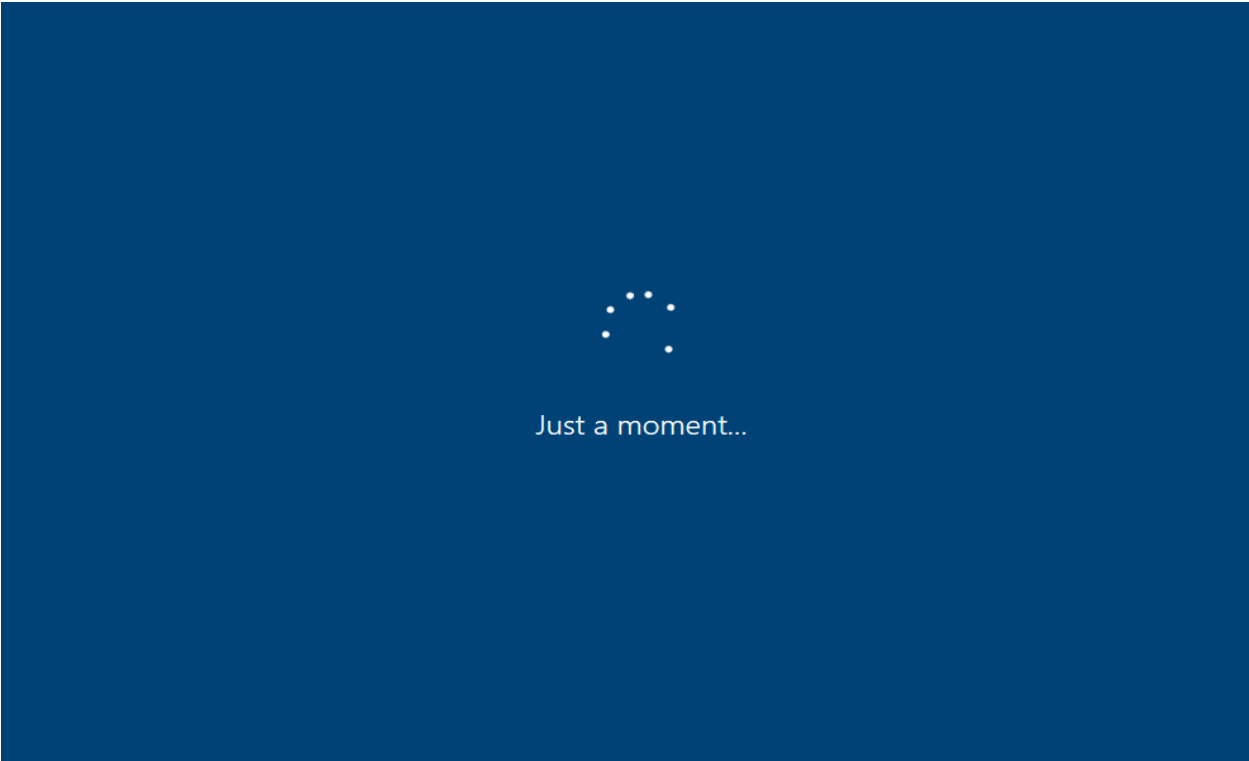


No

The number of ads you see won't change, but they may be less relevant to you.

[Learn more](#)

[Accept](#)



System

Control Panel > System and Security > System

Control Panel Home

- Device Manager
- Remote settings
- System protection
- Advanced system settings

View basic information about your computer

Windows edition

Windows 10 Enterprise

© 2018 Microsoft Corporation. All rights reserved.

Windows 10

System

Processor: Intel(R) Core(TM) i7-2630QM CPU @ 2.00GHz 2.00 GHz

Installed memory (RAM): 2.98 GB

System type: 64-bit Operating System, x64-based processor

Pen and Touch: No Pen or Touch Input is available for this Display

Computer name, domain, and workgroup settings

Computer name: WIN1809 [Change settings](#)

Full computer name: WIN1809

Computer description:

Workgroup: WORKGROUP

Windows activation

Windows is activated [Read the Microsoft Software License Terms](#)

Product ID: 00329-00000-00003-AA284 [Change product key](#)

See also

Security and Maintenance

System

Control Panel > System and Security > System

Control Panel Home

- Device Manager
- Remote settings
- System protection
- Advanced system settings

View basic information about your computer

Windows edition

Windows 10 Enterprise

© 2018 Microsoft Corporation. All rights reserved.

Windows 10

System

Processor: Intel(R) Core(TM) i7-2630QM CPU @ 2.00GHz 2.00 GHz

Installed memory (RAM): 2.98 GB

System type: 64-bit Operating System, x64-based processor

Pen and Touch: No Pen or Touch Input is available for this Display

Computer name, domain, and workgroup settings

Computer name: WIN1809 [Change settings](#)

Full computer name: WIN1809.RAMLAN.CA

Computer description:

Domain: RAMLAN.CA

Windows activation

Windows is activated [Read the Microsoft Software License Terms](#)

Product ID: 00329-00000-00003-AA284 [Change product key](#)

See also

Security and Maintenance



Windows 10

Microsoft Windows
Version 1809 (OS Build 17763.107)
© 2018 Microsoft Corporation. All rights reserved.

The Windows 10 Enterprise operating system and its user interface are protected by trademark and other pending or existing intellectual property rights in the United States and other countries/regions.

This product is licensed under the [Microsoft Software License Terms](#) to:

Jay

OK

← Settings

Home

Find a setting

Update & Security

Windows Update

Delivery Optimization

Windows Security

Backup

Troubleshoot

Recovery

Activation

Find my device

For developers

Windows Update

*Some settings are managed by your organization

[View configured update policies](#)



Updates available

Last checked: Today, 1:10 PM

Definition Update for Windows Defender Antivirus - KB2267602
(Definition 1.281.253.0)

Status: Downloading - 23%

2018-11 Cumulative Update for Windows 10 Version 1809 for x64-based Systems (KB4467708)

Status: Pending download

Windows Malicious Software Removal Tool x64 - November 2018
(KB890830)

Status: Pending download

2018-11 Security Update for Adobe Flash Player for Windows 10 Version 1809 for x64-based Systems (KB4467694)

Status: Pending download

Update for Adobe Flash Player for Windows 10 Version 1809 for x64-based Systems (KB4462930)

Status: Pending download

[Change active hours](#)

Windows Script Host



Name: Windows(R), Enterprise edition
Description: Windows(R) Operating System, VOLUME_KMSCLIENT
channel
Partial Product Key: 2YT43
License Status: Licensed
Volume activation expiration: 259152 minute(s) (180 day(s))
Configured Activation Type: All

Most recent activation information:
Key Management Service client information
Client Machine ID (CMID): e66cb9b6-180e-452b-a142-df695e9e1a80
KMS machine name from DNS: [REDACTED]
KMS machine IP address: 192.168.0.2
KMS machine extended PID:
03612-00206-482-761170-03-4105-14393.0000-1082017
Activation interval: 120 minutes
Renewal interval: 10080 minutes
KMS host caching is enabled

OK

Windows Script Host



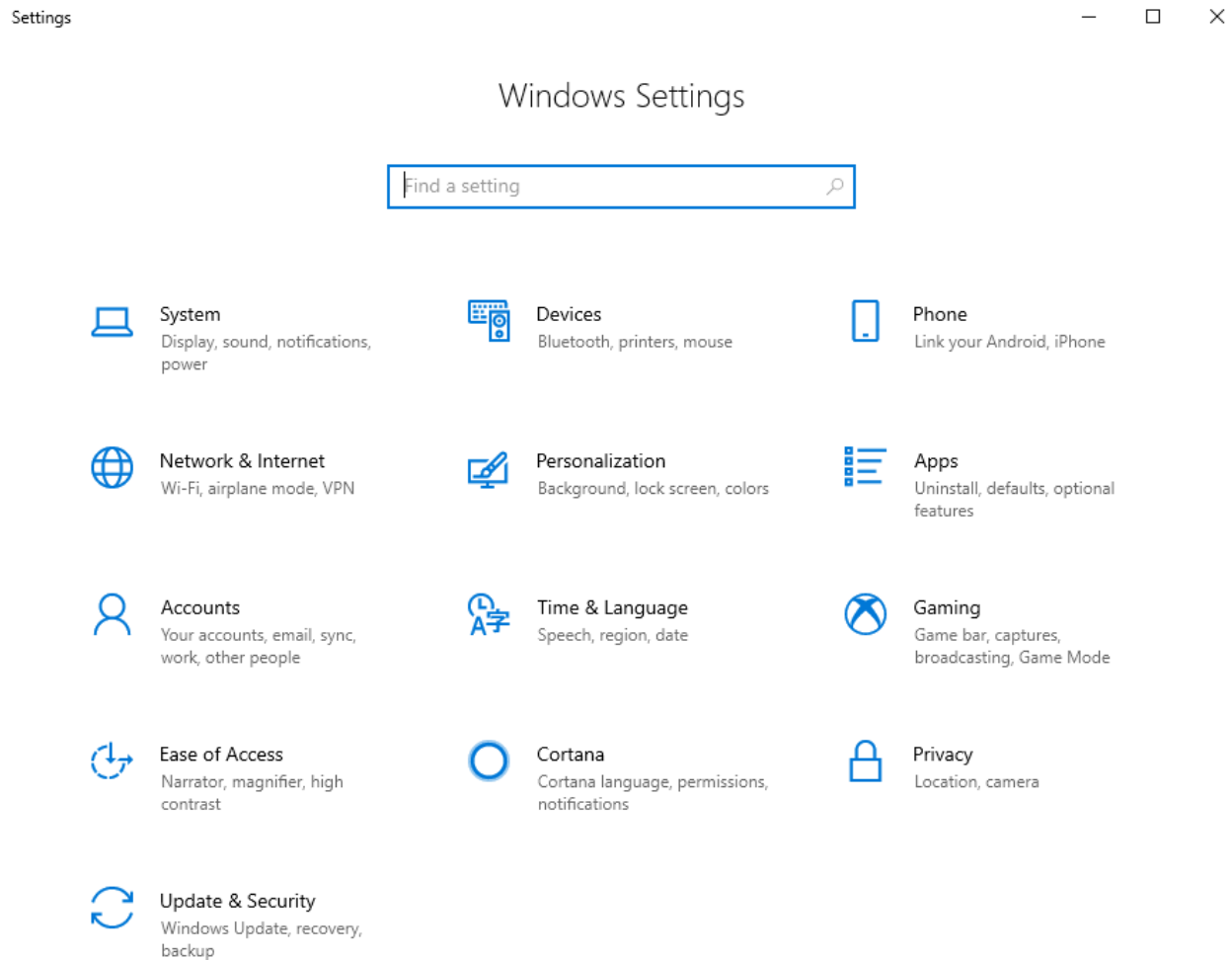
Software licensing service version: 10.0.17763.107

Name: Windows(R), Enterprise edition
Description: Windows(R) Operating System, VOLUME_KMSCLIENT
channel
Activation ID: 73111121-5638-40f6-bc11-f1d7b0d64300
Application ID: 55c92734-d682-4d71-983e-d6ec3f16059f
Extended PID: 03612-03290-000-000003-03-4105-17763.0000-3202018
Product Key Channel: Volume:GVLK
Installation ID:
5435270135087640065417341722388383515799152355974485991583998
41
Partial Product Key: 2YT43
License Status: Licensed
Volume activation expiration: 259151 minute(s) (180 day(s))
Remaining Windows rearm count: 1001
Remaining SKU rearm count: 1001
Trusted time: 16-Nov-2018 1:21:36 PM
Configured Activation Type: All

Most recent activation information:
Key Management Service client information
Client Machine ID (CMID): e66cb9b6-180e-452b-a142-df695e9e1a80
KMS machine name from DNS: [REDACTED]
KMS machine IP address: 192.168.0.2
KMS machine extended PID:
03612-00206-482-761170-03-4105-14393.0000-1082017
Activation interval: 120 minutes
Renewal interval: 10080 minutes
KMS host caching is enabled

OK

The whole installation took over 30 minutes including the updates. Quite happy with the performance and feel of Windows 10 1809 x64. Will have to explore more with Windows Settings and see what is new and improved features.



This concludes the process of installing Win 10 1809 x64.

Thanks

Ram Lan
16th Nov 2018