

HOW TO UPGRADE DPM 2019 to DPM 2022

In this post, I am going to upgrade Data Protection Manager 2019 to Data Protection Manager 2022. This will be in place upgrade on Windows Server 2019.

Before starting the upgrade, I did install all the updates and restarted the server. There were no backup jobs running on DPM 2019.

You can check below links for more info with regard to the upgrade.

<https://docs.microsoft.com/en-us/system-center/dpm/upgrade-dpm?view=sc-dpm-2022>

Upgrade to DPM 2022

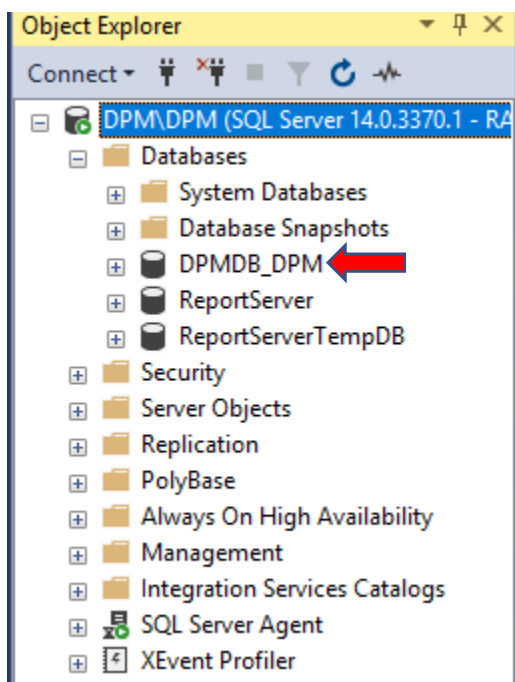
You can install System Center - 2022 Data Protection Manager (DPM) on Windows Server 2019. You can upgrade to DPM 2022 from the following versions:

- DPM 2019

Upgrade path for DPM 2022

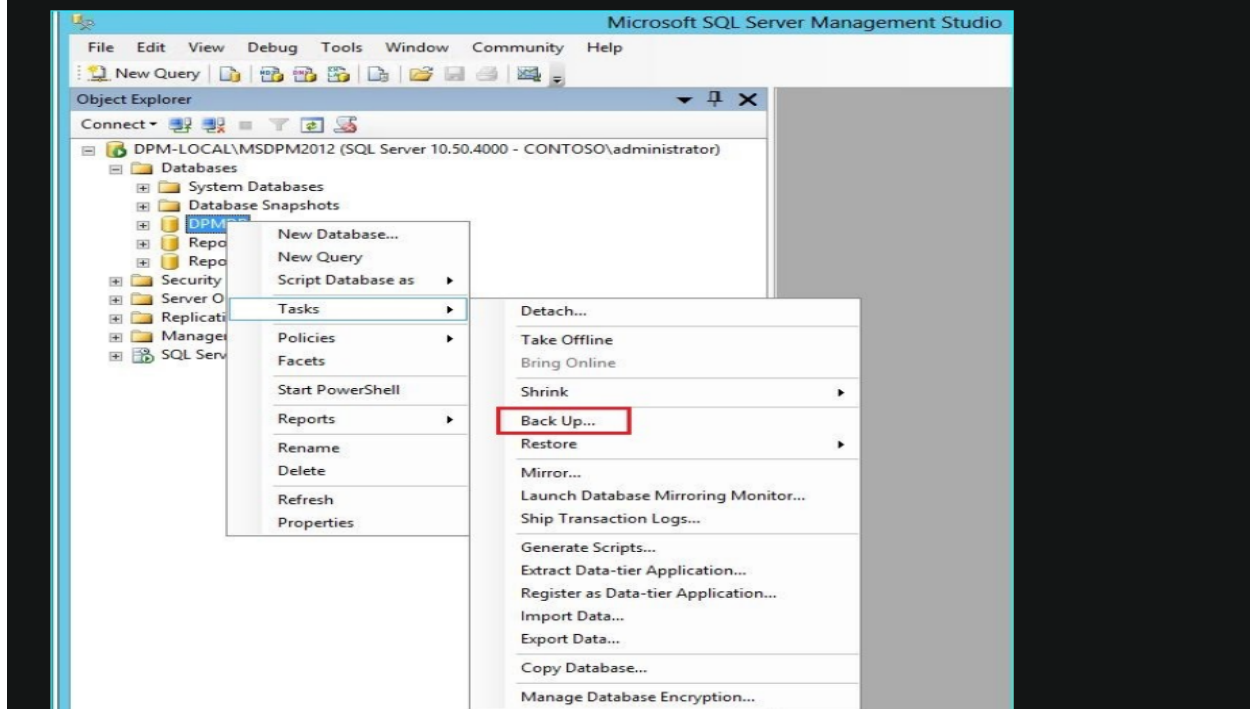
If you upgrade from DPM 2019 to DPM 2022, make sure your installation has the following necessary updates:

- Upgrade the DPM server to DPM 2022.
- Upgrade the [MARS agent](#) to the latest version (if installed).
- Update the agents on the protected servers.
- Upgrade the DPM Remote Administrator on all production servers.
- Backups continue without rebooting your production server.

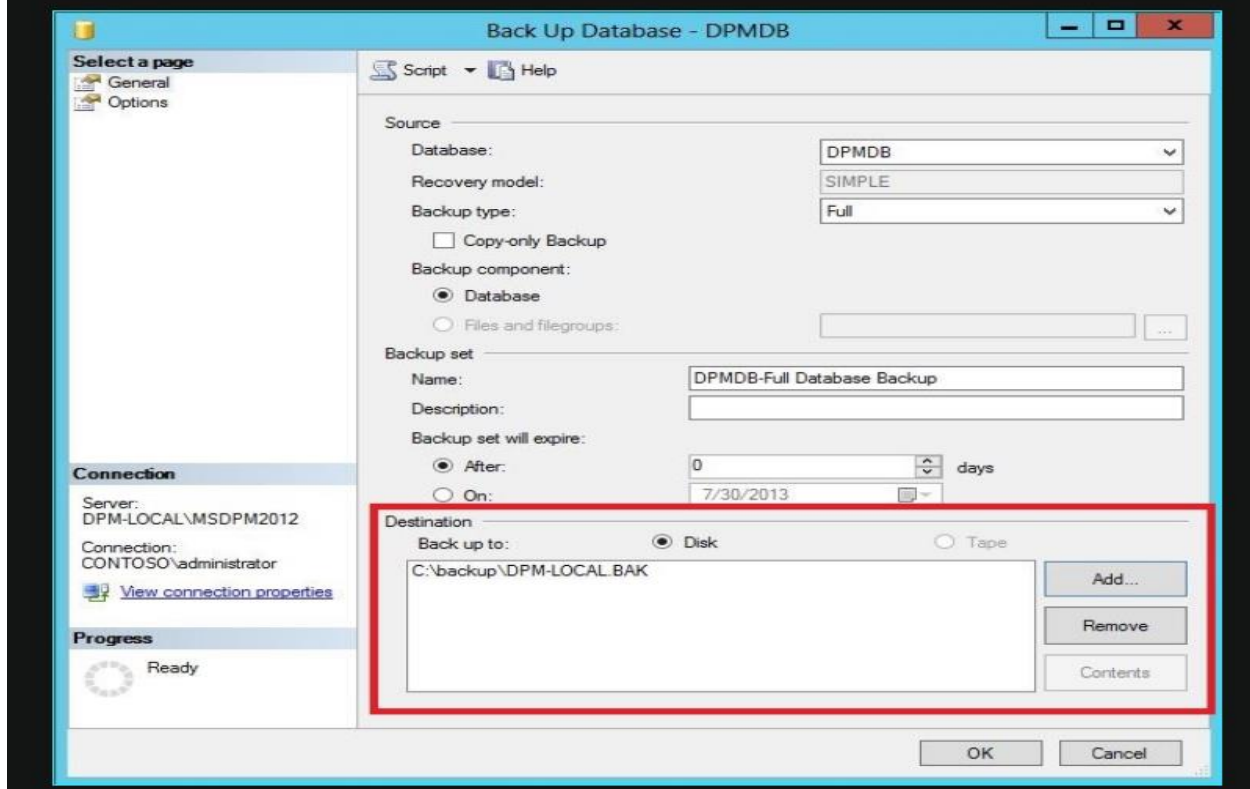


I did not backup DPM database. If you need these are the steps:

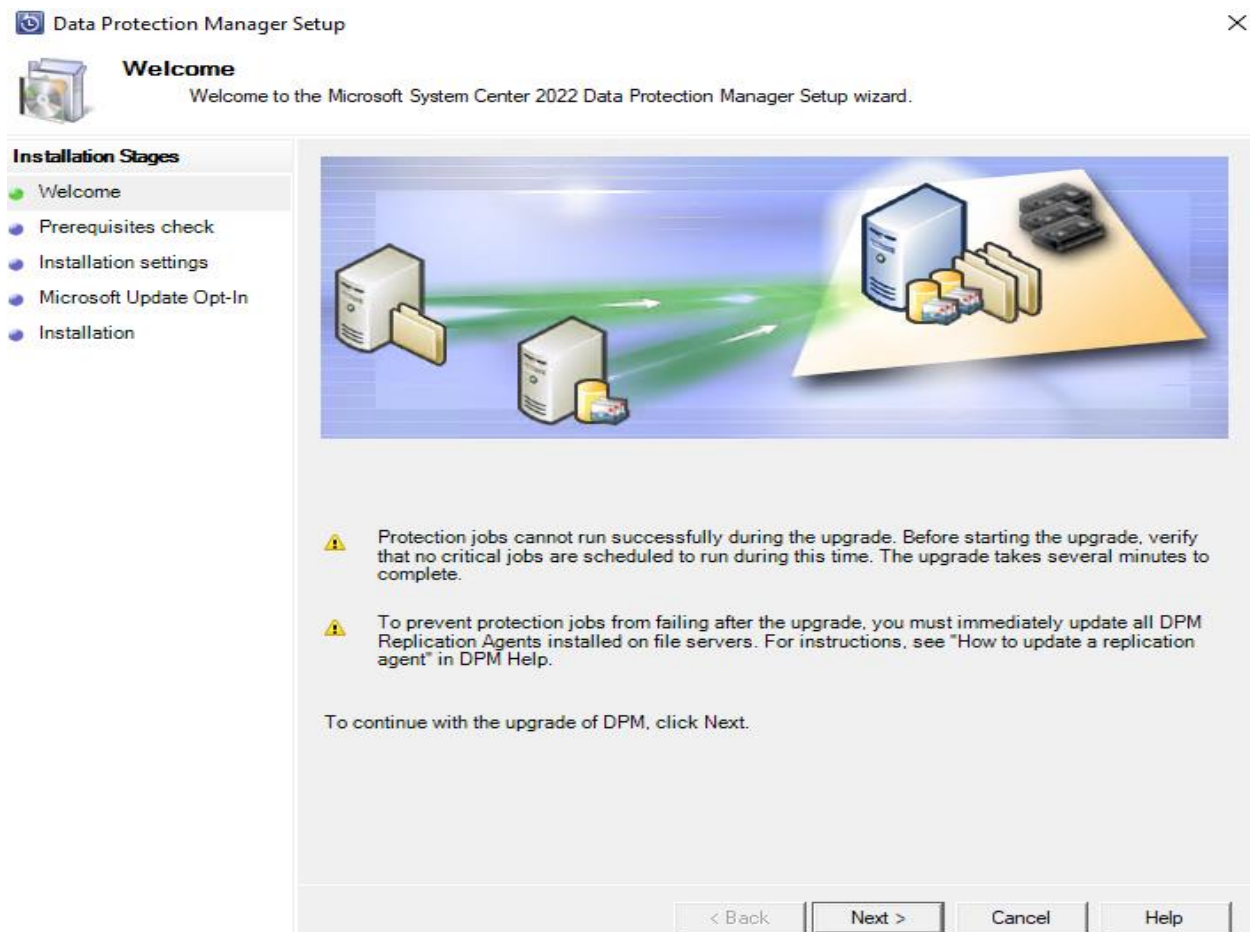
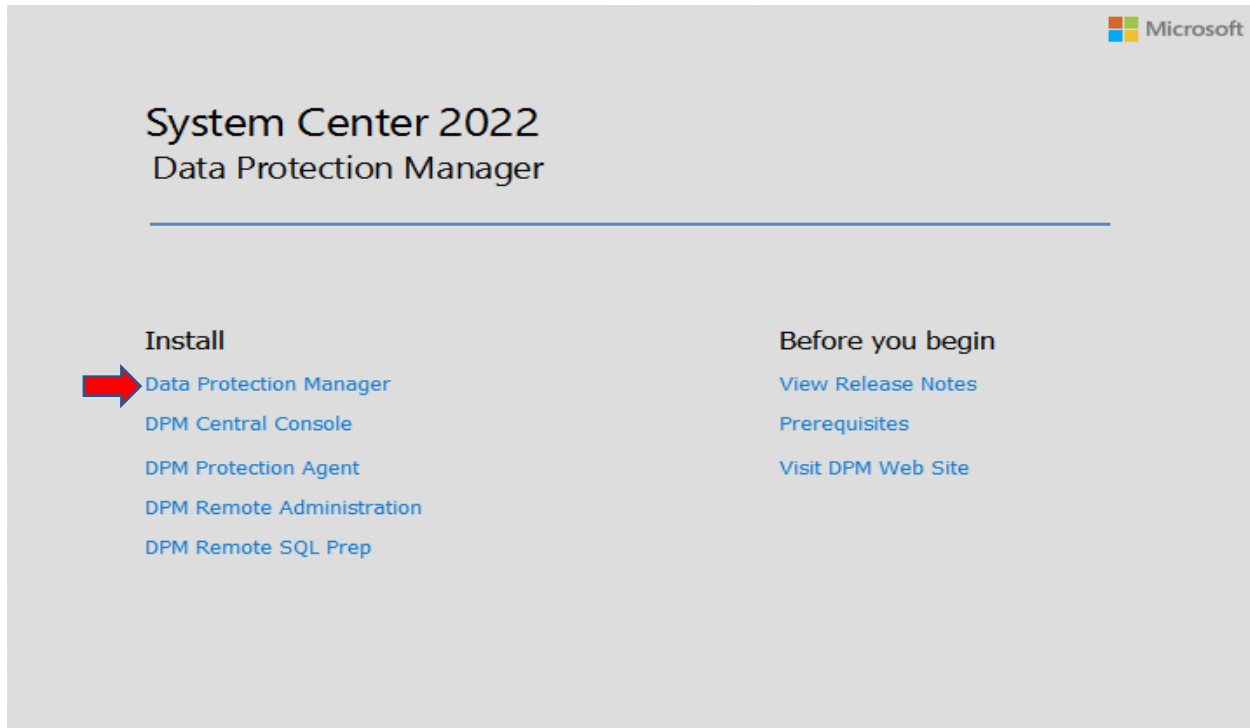
1. On the System Center Data Protection Manager server or on the remote SQL Server hosting the DPM database, start **Microsoft SQL Management Studio** and connect to the SQL instance hosting the current DPM DPMDb.
2. Right-click the DPM database, and under **Tasks**, select the **Back Up...** option.





3. Add a backup destination and file name, and then select **OK** to start the backup.




Copied DPM 2022 setup file to the server and started the upgrade.



 Data Protection Manager Setup





Prerequisites Check

Please wait while the wizard checks for required hardware and software.

Installation Stages

- Welcome
- Prerequisites check
- Installation settings
- Microsoft Update Opt-In
- Installation

DPM requires a database. You can use a local or remote instance of SQL Server that already exists.

☒ Use stand-alone SQL Server.
SQL Server is not clustered.


☐ Use clustered SQL Server
SQL Server is clustered


Instance of SQL Server
(Example: SQLSERV or SQLSERV\MYSQLINSTANCE):


User Name: Password:


Domain:

Select the appropriate option and click on the button to perform the prerequisite check and install the missing Windows components.



 Data Protection Manager Setup





Prerequisites Check

Please wait while the wizard checks for required hardware and software.

Installation Stages

- Welcome
- Prerequisites check
- Installation settings
- Microsoft Update Opt-In
- Installation

DPM requires a database. You can use a local or remote instance of SQL Server that already exists.

☒ Use stand-alone SQL Server.
SQL Server is not clustered.

☐ Use clustered SQL Server
SQL Server is clustered


Instance of SQL Server
(Example: SQLSERV or SQLSERV\MYSQLINSTANCE):

User Name: Password:

Domain:

Select the appropriate option and click on the button to perform the prerequisite check and install the missing Windows components.

Checking ReportServerURLsAccessible...



Prerequisites check is 31% complete.

**Prerequisites Check**

Please wait while the wizard checks for required hardware and software.

Installation Stages

- Welcome
- Prerequisites check
- Installation settings
- Microsoft Update Opt-In
- Installation

DPM requires a database. You can use a local or remote instance of SQL Server that already exists.

☒ Use stand-alone SQL Server.

SQL Server is not clustered.

☐ Use clustered SQL Server

SQL Server is clustered

Instance of SQL Server

(Example: SQLSERV or SQLSERV\MYSQLINSTANCE):

DPM\DPM

User Name:


Password:

Domain:

Select the appropriate option and click on the button to perform the prerequisite check and install the missing Windows components.

Check Again

This computer meets the software and hardware requirements for DPM. However, we strongly recommend that you review the details below before proceeding with the upgrade.

Details You are upgrading the DPM database attached to this SQL Server instance. Take a backup of the DPM database before proceeding with the upgrade.

< Back

Next >

Cancel

Help

**Prerequisites Check**

Please wait while the wizard checks for required hardware and software.

Installation Stages

- Welcome
- Prerequisites check
- Installation settings
- Microsoft Update Opt-In
- Installation

DPM Files

Program files:

c:\Program Files\Microsoft System Center 2022\DPM

Change...

Space requirements

	Required	Available
System drive:	1000 MB	207704 MB
Program files drive:	3650 MB	207704 MB

For more details on storage requirement click on the link below.

<https://go.microsoft.com/fwlink/?linkid=2174212>

< Back

Next >

Cancel

Help

**Microsoft Update Opt-In****Installation Stages**

- Welcome
- Prerequisites check
- Installation settings
- Microsoft Update Opt-In
- Installation



Microsoft Update offers security and important updates for Windows and other Microsoft products, including Data Protection Manager. Updates are delivered using your Automatic Updates setting, or you can visit the Microsoft Update Web site. If you select to use Microsoft Update, a new shortcut to the service will be placed on the Start menu, and the Windows Update icon will redirect to Microsoft Update.



☒ Use Microsoft Update when I check for updates (recommended)



☐ I do not want to use Microsoft Update

[See the Microsoft Update FAQ](#)

[Privacy Statement](#)

< Back

Next >

Cancel

Help

**Microsoft Update Opt-In****Installation Stages**

- Welcome
- Prerequisites check
- Installation settings
- Microsoft Update Opt-In
- Installation

Software

➡ Microsoft System Center 2022 Data Protection Manager

Status

Please wait while Data Protection Manager is configured.



Cancel

Help

Data Protection Manager Setup



Microsoft Update Opt-In

Installation Stages

- Welcome
- Prerequisites check
- Installation settings
- Microsoft Update Opt-In
- Installation

Software

➡ Microsoft System Center 2022 Data Protection Manager

Status

Please wait while Data Protection Manager is upgraded.



Cancel

Help

Data Protection Manager Setup



Microsoft Update Opt-In

Installation Stages

- Welcome
- Prerequisites check
- Installation settings
- Microsoft Update Opt-In
- Installation

Software

✓ Microsoft System Center 2022 Data Protection Manager

Status Warning

➡ Data Protection Manager has been successfully upgraded.

Please click on the link to check for the latest DPM updates:
<http://go.microsoft.com/fwlink/?linkid=820914>

DPM Setup has created the following firewall exceptions:

Close

Help

Data Protection Manager Setup



Installation

Setup is upgrading Data Protection Manager and its prerequisite software.

Installation Stages

- Welcome
- Prerequisites check
- Installation settings
- Microsoft Update Opt-In
- Installation

Software

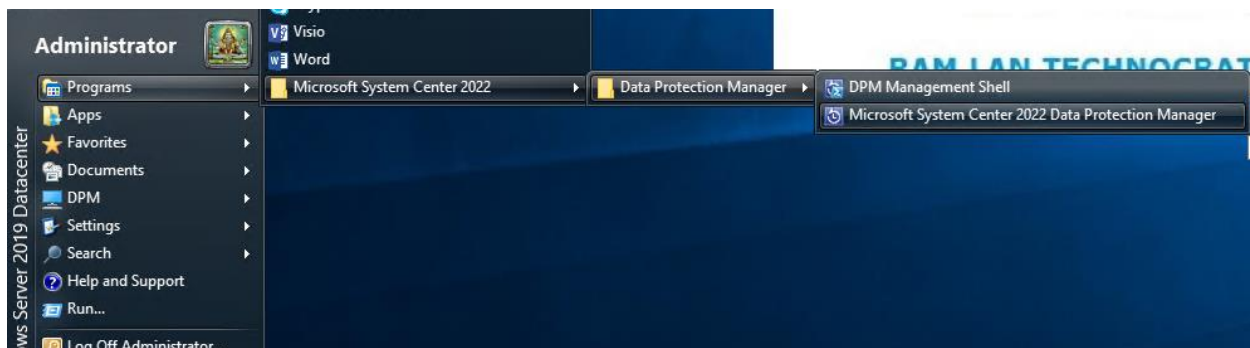
✓ Microsoft System Center 2022 Data Protection Manager

Status Warning

To prevent protection jobs from failing, you must now update all previously installed DPM Replication Agents. To update Replication Agents, go to the Management task area in DPM Administrator Console.
Data Protection Manager has been successfully uninstalled, but some components could not be removed.
Setup was unable to remove reports deployed with SQL Server Reporting Services.

Close

Help



About Data Protection Manager



Data Protection Manager
Microsoft Corporation
Version: 10.22.125.0

Allows you to backup and recover data. To know more about DPM and DPM's SQL Server, click About DPM on the tool ribbon.

OK



System Center 2022 Data Protection Manager

Server Version: 10.22.125.0 (Evaluation version)

Warning:

This computer program is protected by copyright law and international treaties. Unauthorized reproduction or distribution of this program, or any portion of it, may result in severe civil and criminal penalties and will be

The evaluation copy of Data Protection Manager will expire in 180 days. A license is required to continue use of the product after expiration.
[Click here for details on how to obtain a license.](#)

DPM's SQL Server: DPM\DPM\DPMDDB_DPM6f5741ef_7a6c_44...

DPM's SQL Reporting Server: DPM\SSRS

[Privacy Statement](#)
[DPM Community](#)

© Microsoft Corporation. All rights reserved.

OK



DPM Management Shell

Windows PowerShell

Copyright (C) Microsoft Corporation. All rights reserved.

Welcome to the DPM Management Shell!

Full list of cmdlets: Get-Command

Only DPM cmdlets: Get-DPMCommand

Get general help: help

Get help for a cmdlet: help <cmdlet-name> or <cmdlet-name> -?

Get definition of a cmdlet: Get-Command <cmdlet-name> -Syntax

Sample DPM scripts: Get-DPMSampleScript

PS C:\Program Files\Microsoft System Center 2022\DPM\DPM\bin> _

System Center 2022 DPM Administrator Console

File Action View Help

New
 Tape catalog retention Manage
 Recovery point status Reports
 Check updates Options
 About
 Help

Protect...

Group by: ☒ Protection group ☐ Computer

Search list below

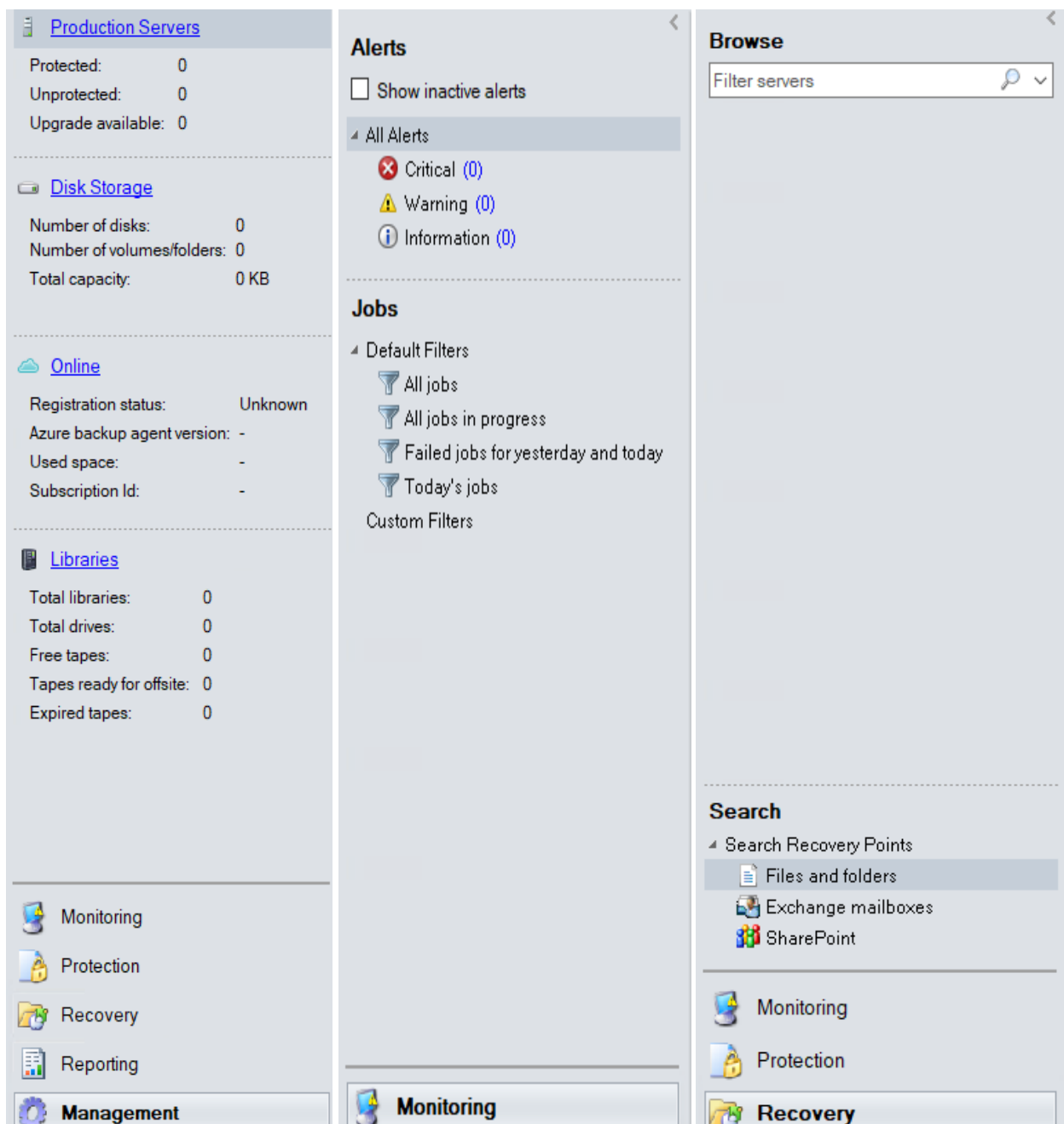
Protection Group Member /	Type	Protection Status
No protection group has been created.		

Before you start protecting data, DPM recommends that you do the following:

1. Add storage to DPM storage pool.
2. Install a protection agent on each computer that you want to protect.
3. Install a tape library if you want to use tape-based protection.
4. Sign up for Azure Backup and register this DPM Server for Online Protection if you want to use online protection.

[Need help getting started?](#)

Monitoring
 Protection
 Recovery
 Reporting
 Management



This completes DPM 2019 upgrade to DPM 2022.

Thanks

Ram

13th May 2022