

How to install Canon Maxis MB2120 Driver Software

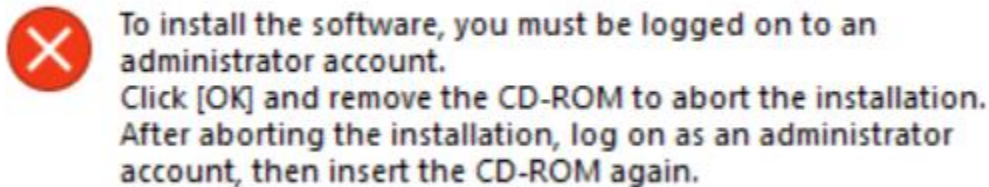
In this post, I am going to install driver and software for above printer. First download the driver from here - <https://printerdrivers.com/canon-maxify-mb2120-driver/>

Canon MAXIFY MB2120 printer driver Supported Windows Operating Systems

Supported OS: Windows 11, Windows 10 32-bit, Windows 10 64-bit, Windows 8.1 32-bit, Windows 8.1 64-bit, Windows 8 32-bit, Windows 8 64-bit, Windows 7 32-bit, Windows 7 64-bit, Windows Vista 32-bit, Windows Vista 64-bit

Filename	Size	
Full Driver and Software Package for Windows Vista 7 8 8.1 and 10.exe	55.73 MB	Download

After that you have to login to the machine as Local Administrator. If you are a user or domain admin the installer will give you this error. I found it the hard way.



Once you login as Local Administrator the installer will start and you can follow these steps.

Canon MB2100 series



Start Setup

Starting the setup needed to use the machine from the computer. Follow the on-screen instructions.

Start Setup

This software allows you to use the machine from the computer.

Useful Software

Installs software that allows you to use the machine more conveniently.

Online Manual

Manual can be checked online.

Language

Exit

Select Country or Region

Select your place of residence.

USA, Canada, Latin America

Select your country or place of residence. If your country or place of residence is not listed below, select "Others".

- United States
- Canada**
- Brazil
- Mexico
- Argentina
- Chile
- Panama
- Others

Back

Next

License Agreement

Before installing Canon Products, carefully read the license agreement below.

END USER LICENSE AGREEMENT

ATTENTION: PLEASE READ THIS DOCUMENT BEFORE INSTALLING THE LICENSED SOFTWARE.

This is a license agreement ("Agreement") between you (either an individual or an entity) and Canon Inc., having its place of business at 30-2 Shimomaruko 3-chome, Ohta-ku, Tokyo 146-8501, Japan ("Canon"), with respect to (i) software programs provided to you with this Agreement, its associated electronic or online manuals, and updates thereof, if any (collectively, the "Software"), (ii) additional data for the Software or Canon's inkjet printers ("Printers") or updates to firmware for the Printers, provided online using the Software ("Data Updates"), and (iii) text, images, graphics and other visual representations in digital format (excluding the Software) for your printing use, provided with this Agreement or provided online using the Software, and updates thereof, if any ("Contents Data"). Software, Data Updates and Contents Data shall

If you accept the agreement, click [Yes]. If you click [No], the software installation will be canceled.

Back

No

Yes

Extended Survey Program

To develop and market products, and to provide special offers and services that better meet customer needs, Canon requests that information such as that below, related to your Canon product, be sent to Canon (if you are using your Canon product in China, to the legally approved research company) through the Internet.

Information related to printer/scanner/fax/information devices

- Basic information such as the printer ID number, installation date and time, country settings, etc.
- Usage history such as the type of ink installed, ink usage information, the number of sheets printed, scanning frequency, and maintenance information, etc.
- Paper use information, printing environment/conditions, scan job setting, and questionnaire results
- Basic device information such as the model name, OS version, language, and display setting information, etc.
- Device driver and application software versions, usage history

(Some of the above information may not be sent depending on your model and/or application software.)

If your Canon product is shared for use, the above information recorded in the shared product will be sent. If you are to

If you agree to the above, click [Agree] to start installing a survey program. Otherwise, click [Do not agree]. This program may not run on unsupported OS versions.

Back

Do not agree

Agree

Firewall Settings

You must deactivate the block on this software in the Windows firewall function.

Deactivate the block

Next

Select Connection Method

Select the printer connection method.



Wireless LAN Connection



USB Connection

Back to Top

Next

Install

For more details on function and settings, refer to the manual.



<http://canon.com/ijsetup>

Downloading 30/40MB


About 1 minutes until completion

Cancel

1 2 **3** 4

Install

For more details on function and settings, refer to the manual.



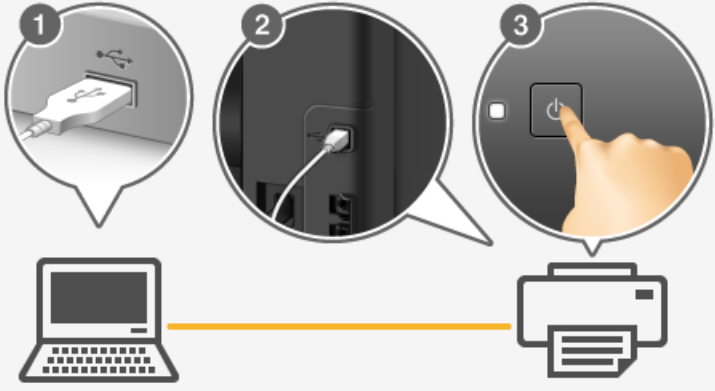
<http://canon.com/ijsetup>

Installing :MP Drivers About 3 minutes until completion

1 2 **3** 4

Printer Connection

Connect the printer and the computer using the USB cable.
Make sure that the printer is turned on.



Cancel Help

Connect the printer and complete the install. If you used Wireless connection it software will complete the install

You also have another way to install. As you might be aware Windows 10 has built in drivers for all the printers. When you plugin it will detect and install the printer. Now we just run the installer and just select these items only.

Canon MB2100 series

1 2 3 4

Software Installation List

The selected software will be installed. Make sure that the software you want to install is selected, and then click [Next].

<input checked="" type="checkbox"/>	User's Manual	11 MB	Drive C: 78564 MB free space Total used space: 672 MB
<input type="checkbox"/>	My Printer	14 MB	
<input checked="" type="checkbox"/>	Speed Dial Utility	18 MB	
<input checked="" type="checkbox"/>	Quick Utility Toolbox	25 MB	
<input checked="" type="checkbox"/>	IJ Network Device Setup Utility	65 MB	
<input checked="" type="checkbox"/>	Easy-WebPrint EX	110 MB	
<input type="checkbox"/>	XPS Driver	130 MB	
<input checked="" type="checkbox"/>	Additional Dictionaries for OCR (Chinese/Korean)	40 MB	

Estimated installation time: 10 to 15 minutes
Installation may take some time depending on your network environment.

Clear All


Back to Top **Next**

Canon MB2100 series

1 2 3 4

Install

For more details on function and settings, refer to the manual.



<http://canon.com/ijsetup>

Downloading 0/0MB Calculating the time remaining...

Cancel



Install

For more details on function and settings, refer to the manual.



<http://canon.com/ijsetup>



Installing :User's Manual

About 18 minutes until completion



Installation completed successfully.

Exit

Open Scan Utility and below you can see all the settings for scanning.

Settings (Document Scan)

Document Scan

Photo Scan

Custom Scan

Scan and Stitch

ScanGear

OCR

E-mail

Scan Options

Select Source: Document (ADF/Platen)

Color Mode: Color

Paper Size: Letter

Resolution: 200 dpi

Document Scan Orientation Settings...

+ Image Processing Settings

Save Settings

File Name: IMG

Save in: Documents

Data Format: PDF (Multiple Pages)

PDF Compression: Standard

Create a PDF file that supports keyword search

Set up password security

Save to a subfolder with current date

Check scan results and specify save settings

Application Settings

Open with an application: Windows Explorer

Send to an application: Preview

Instructions Defaults OK

Settings (Save to PC (Document))

Save to PC (Document)

Save to PC (Photo)

Attach to E-mail (Document)

Attach to E-mail (Photo)

Scan Options

Paper Size: Use Device Setting

Resolution: Use Device Setting

+ Image Processing Settings

Save Settings

File Name: IMG

Save in: Documents

Data Format: Use Device Setting

JPEG Image Quality: Standard

Create a PDF file that supports keyword search

Save to a subfolder with current date

Application Settings

Open with an application: Windows Explorer

Send to an application: Preview

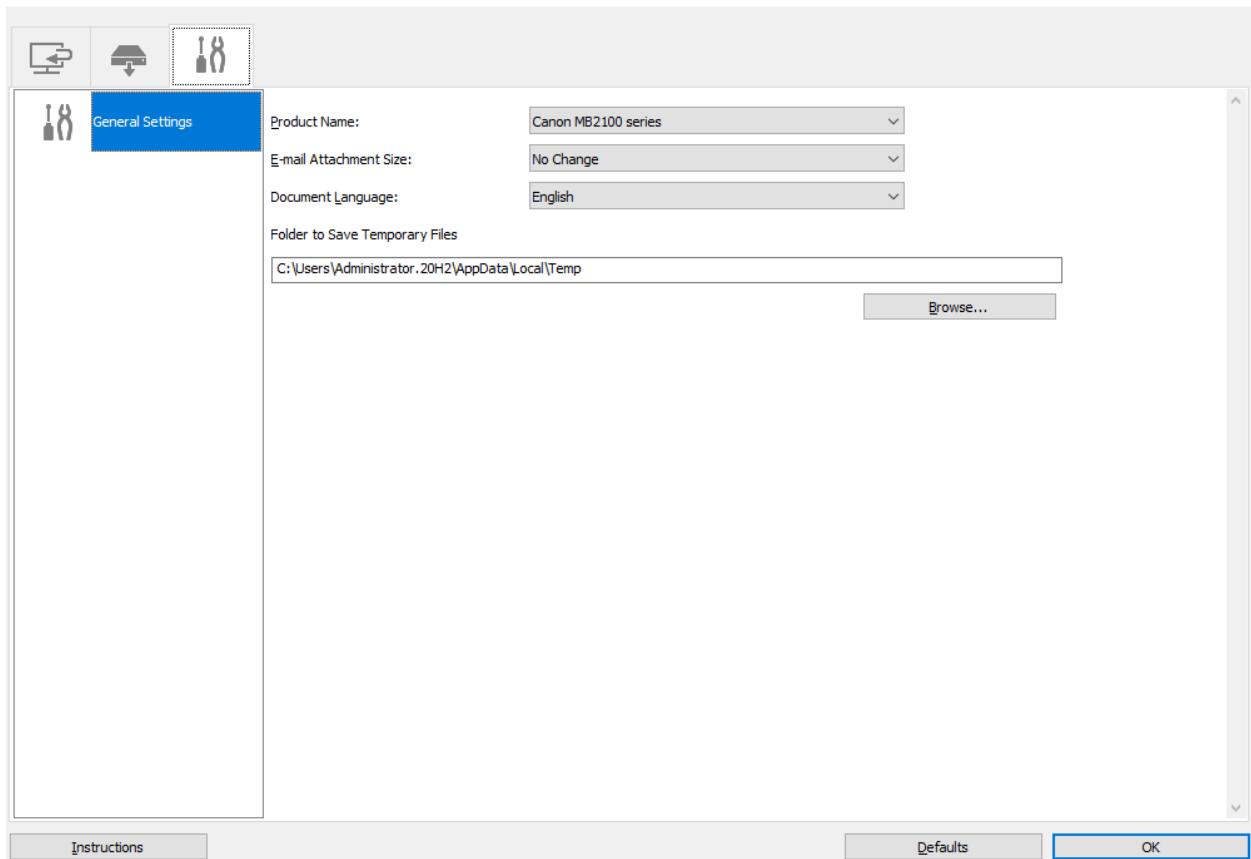
Send to a folder: None

Do not start any application

More Functions

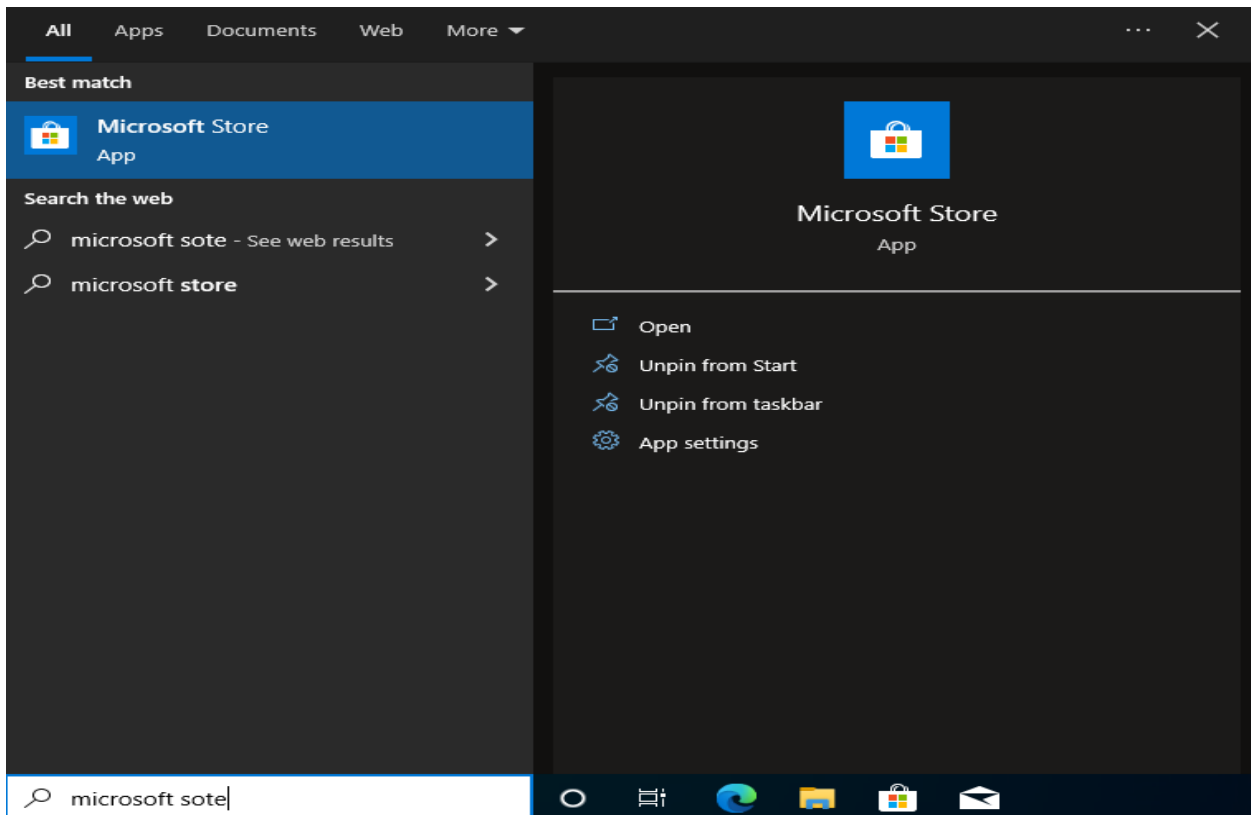
Instructions Defaults OK

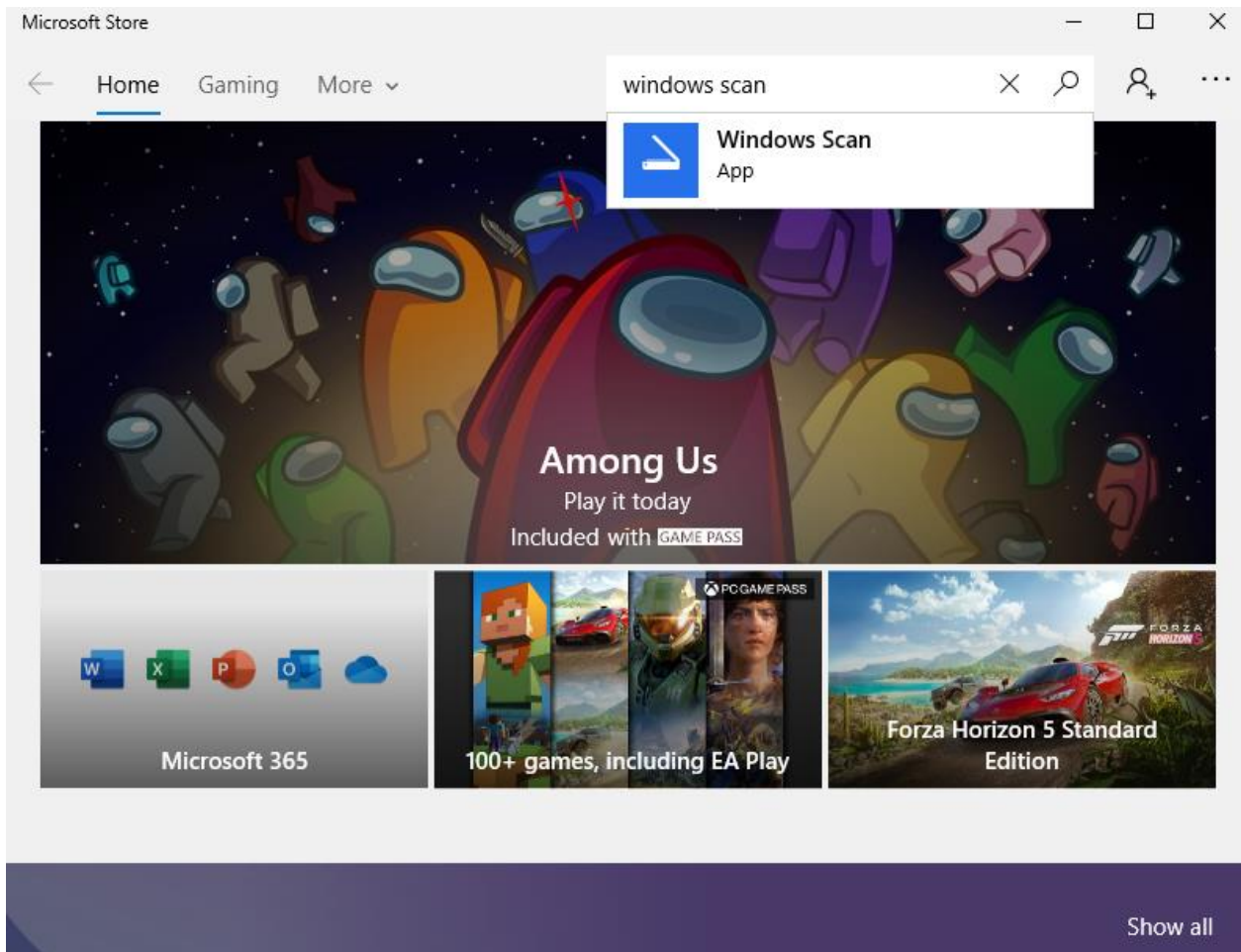
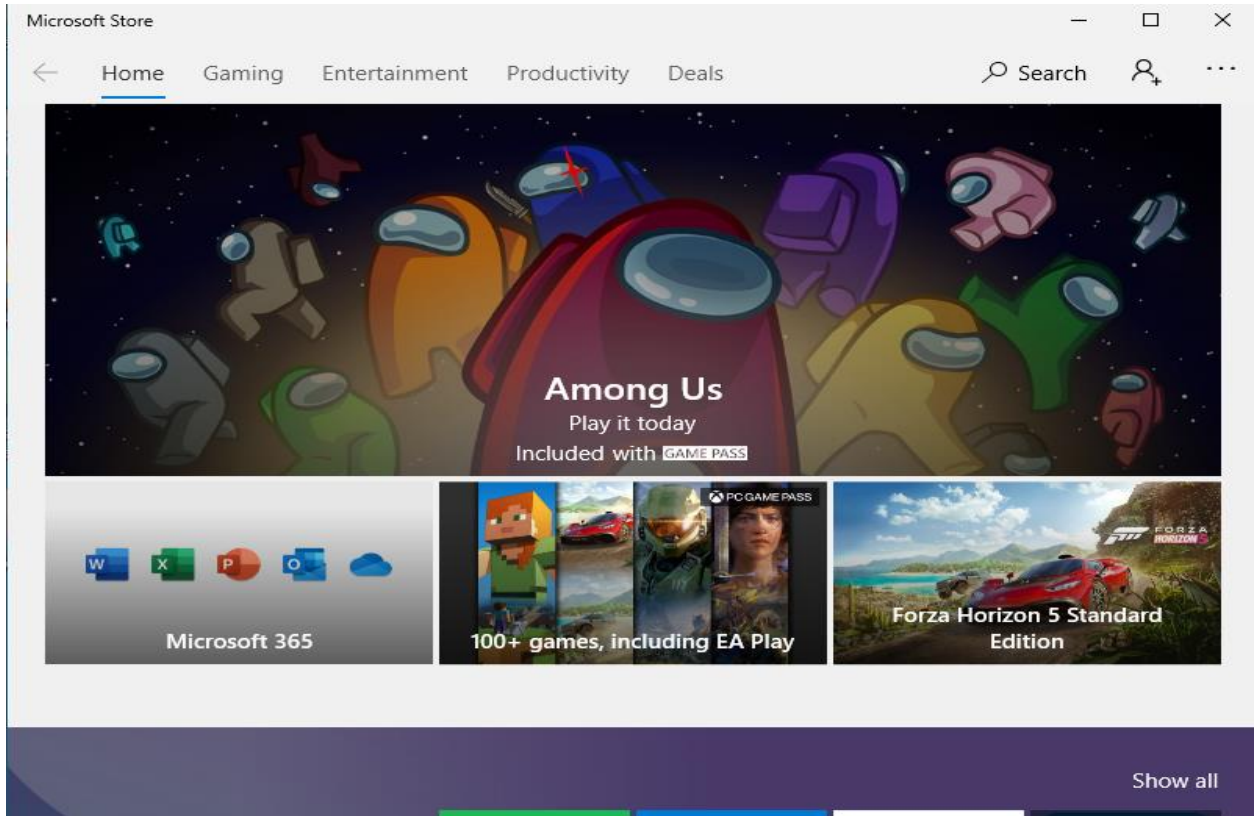
Settings (General Settings)



Windows Scan


You can also install Windows Scan app from Microsoft Store and use it with the Canon Printer.





Microsoft Store

Home Gaming Entertainment Productivity Deals Search

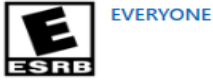


Windows Scan

Microsoft Corporation • Utilities & tools

★★★★★ 591 Share

If you have a scanner, this app makes it easy to scan documents and pictures and save them where you'd like. Whether you're scanning a photo from the flatbed or scanning multiple pages by [More](#)



Free

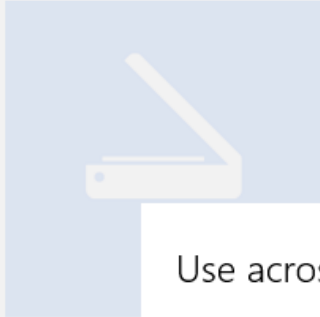
[Get](#)

[Wish list](#)

[Overview](#) System Requirements Reviews Related

Microsoft Store

Home Gaming Entertainment Productivity Deals Search




Windows Scan

Microsoft Corporation • Utilities & tools

★★★★★ 591 Share

If you have a scanner, this app makes it easy to scan documents and pictures and save them where you'd like. Whether you're scanning a photo from the flatbed or scanning multiple pages by [More](#)



Free

[Get](#)

[Wish list](#)

[Overview](#) System Requirements Reviews Related

Use across your devices

Sign in with Microsoft and use this on any compatible device.

[No, thanks](#) [Sign in](#)



Windows Scan

Microsoft Corporation • Utilities & tools

★★★★★ 591 [Share](#)

If you have a scanner, this app makes it easy to scan documents and pictures and save them where you'd like. Whether you're scanning a photo from the flatbed or scanning multiple pages by using a document feeder, the Scan app is the perfect assistant.

Free



EVERYONE

Get

Wait for it to complete and use it for scanning documents.

Thanks

Ram

24th Feb 2022