

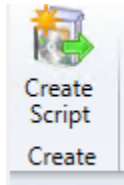
Create custom environment variables for ConfigMgr

In this post, I am going to deploy a script to ALL SYSTEMS so, I don't have to open Control Panel or Software Center or CM Logs folders manually. All done by running Windows + R with respective names – such as

CM – Launches Control Panel Applet

CMSC – Launches Software Center

CMLogs – Opens %SystemRoot%\CCM\Logs



Click Import – Look for the script where it is saved.

Create Script ×

Script Details

Script Details

Summary

Progress

Completion

Specify script details

Specify the script to be executed on client devices.

Script name:

Script language:

Script:

```
1 $QuickcutDir = "C:\IT\Quickcuts"
2
3 If(!(Test-Path $QuickcutDir)) {
4     New-Item $QuickcutDir -ItemType Directory -Force
5 }
6
7
8
9 $Shortcut = (New-Object -ComObject WScript.Shell).Create
10 $Shortcut.TargetPath = "$($env:SystemRoot)\CCM\SMSCFGRC.
11 $Shortcut.WorkingDirectory = "$($env:SystemRoot)\CCM"
12 $Shortcut.IconLocation = "$($env:SystemRoot)\CCM\SMSCFGR
13 $Shortcut.Save()
14
15 $Shortcut = (New-Object -ComObject WScript.Shell).Create
16 $Shortcut.TargetPath = "$($env:SystemRoot)\CCM\Logs"
17 $Shortcut.WorkingDirectory = "$($env:SystemRoot)\CCM"
18 $Shortcut.IconLocation = "$($env:SystemRoot)\system32\im
19 $Shortcut.Save()
20
21
22 $Shortcut = (New-Object -ComObject WScript.Shell).Create
```

< Previous

Next >

Summary

Cancel



Summary

Script Details

Summary

Progress

Completion

Confirm the details

Details:

Script details

Script Name: Shortcut Control Panel
Script Type: PowerShell

To change these settings, click Previous. To apply the settings, click Next.

< Previous

Next >

Summary

Cancel



Completion

Script Details

Summary

Progress

Completion

**The task "Create Script" completed successfully**

Details:

Script details

Script Name: Shortcut Control Panel
Script Type: PowerShell

To exit the wizard, click Close.

< Previous

Next >

Summary

Close

Now Approve the script.

Home

Create Script Saved Searches Approve/Deny Edit Copy Refresh Delete Properties Set Security Scopes Classify

Software Library Overview Scripts

Scripts 9 items

Name	Version	Author	Type	Approval State	Approver	Approver Comment	Last Update Time
Shortcut Control Panel	1	RAMLAN/Administrator	PowerShell	Waiting for approval			18-Dec-2021 9:26...

Approve or Deny Script



Script Details

Script Details

Script Approval

Summary

Progress

Completion

Specify script details

Specify the script to be executed on client devices.

Script name:

Script language:

Script:

```
1 $QuickcutDir = "C:\IT\Quickcuts"
2
3 If(!(Test-Path $QuickcutDir)) {
4     New-Item $QuickcutDir -ItemType Directory -Force
5 }
6
7
8
9 $Shortcut = (New-Object -ComObject WScript.Shell).Create
10 $Shortcut.TargetPath = "$($env:SystemRoot)\CCM\SMSCFGRC.
11 $Shortcut.WorkingDirectory = "$($env:SystemRoot)\CCM"
12 $Shortcut.IconLocation = "$($env:SystemRoot)\CCM\SMSCFGRC
13 $Shortcut.Save()
14
15 $Shortcut = (New-Object -ComObject WScript.Shell).Create
16 $Shortcut.TargetPath = "$($env:SystemRoot)\CCM\Logs"
17 $Shortcut.WorkingDirectory = "$($env:SystemRoot)\CCM"
18 $Shortcut.IconLocation = "$($env:SystemRoot)\system32\im
19 $Shortcut.Save()
20
21
22 $Shortcut = (New-Object -ComObject WScript.Shell).Create
```

< Previous

Next >

Summary

Cancel



Script Approval

Script Details

Script Approval

Summary

Progress

Completion

Approve or deny script

This script requires approval before it can run.

Script Approval

☒ Approve

☐ Deny

Approver comment:

< Previous

Next >

Summary

Cancel



Summary

Script Details

Script Approval

Summary

Progress

Completion

Confirm the details

Details:

Script details

Script Name: Shortcut Control Panel
Script Type: PowerShell

Approval details

Approval state: Approved
Additional comment:

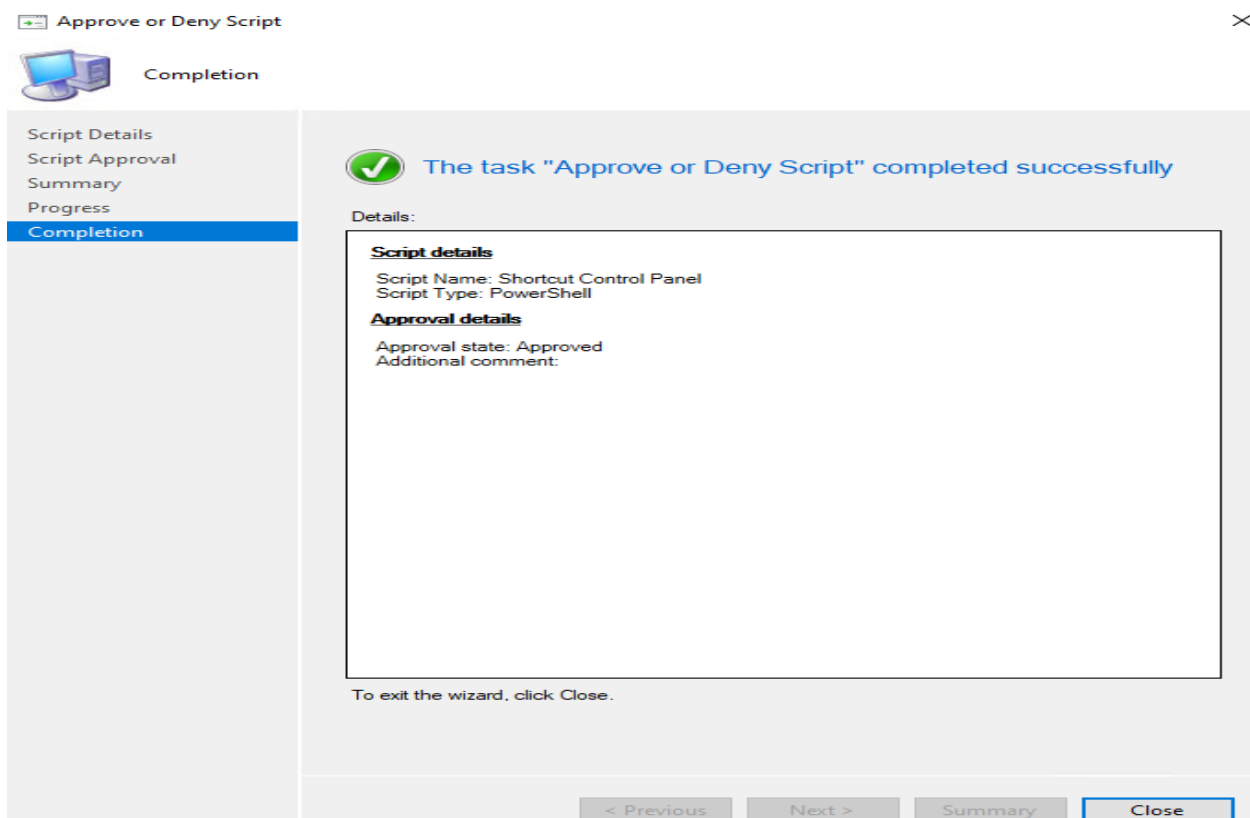
To change these settings, click Previous. To apply the settings, click Next.

< Previous

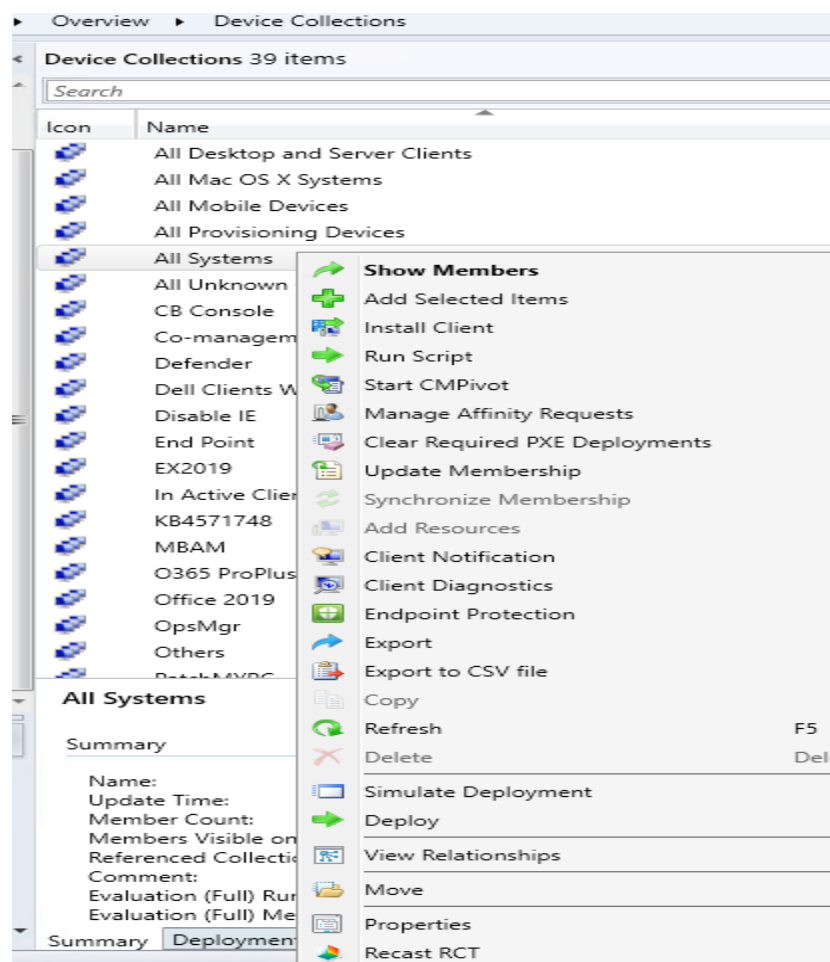
Next >

Summary

Cancel



Now Run Script for All Systems





Run Script

Run Script

Summary

Select script to run

Script Status Monitoring

Select script to run

Choose a script to deploy to the selected resource. Only approved scripts are listed.

Filter...			
Script Name	Script Type	Script GUID	
001 Update User GPO	PowerShell	8EB09350-717B-4	
Capture Logs	PowerShell	9DD8C7DF-3659-	
Configure Edge Auto Update	PowerShell	1463F5D2-E7C2-4	
GetNetFrameworkVersion	PowerShell	5453F733-A86E-4	
LAR Reset	PowerShell	76975268-A928-4	
OG	PowerShell	054F537A-24D5-4	
Print Spooler Start	PowerShell	8489DB42-5A1C-4	
Print Spooler Stop Disable	PowerShell	811E26AA-605C-4	
Shortcut Control Panel	PowerShell	50C3B2AE-7C4F-4	

< Previous

Next >

Summary

Cancel



Summary

Run Script

Summary

Select script to run

Script Status Monitoring

Confirm the script details before running the script.

Details:

Script execution details

Script Name: Shortcut Control Panel
Script Type: PowerShell
Collection ID: SMS00001

There are 10 resources in this collection. Clients that are online will be notified to run script as soon as possible. Click Next to continue.

To change these settings, click Previous. To apply the settings, click Next.

< Previous

Next >

Summary

Cancel



Script Status Monitoring

Run Script

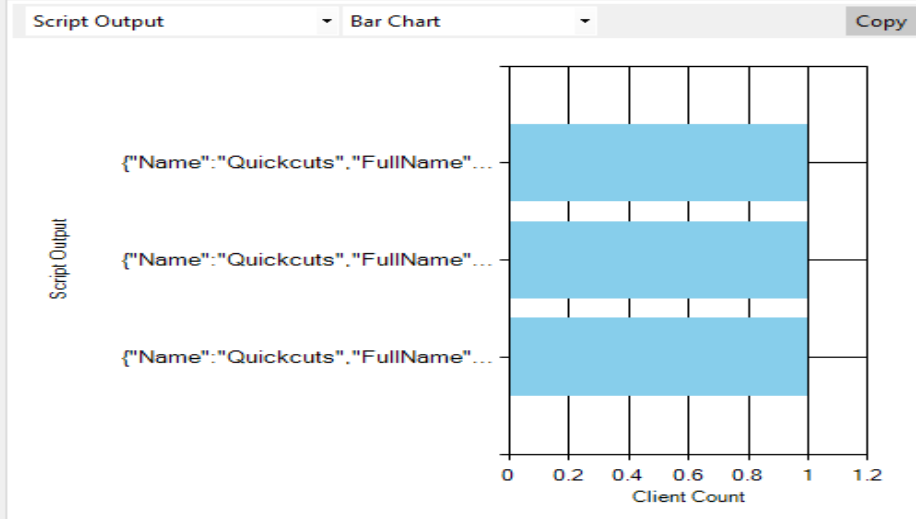
Summary

Select script to run

Script Status Monitoring

Script status

Script completed.



Script Details Summary Run Details

You can also view script status in the monitoring workspace in the script status node.

< Previous

Next >

Summary

Close

Script status

Script Status 1 items

Client Operation ID	Script Name	Collection ID	Collection Name	Last Update Time	Overall Script Execution State	Script Version
16823302	Shortcut Control Panel	SMS00001	All Systems	18-Dec-2021 9:30...	Succeeded	1

Shortcut Control Panel

General

Script Name: Shortcut Control Panel
Script GUID: 50C382AE-7C4F-438B-A7F4-678758EB7045
Collection ID: SMS00001
Last Update Time: 18-Dec-2021 9:30 AM
Total Clients: 3
Overall Script Execution State: Succeeded

Script Completion



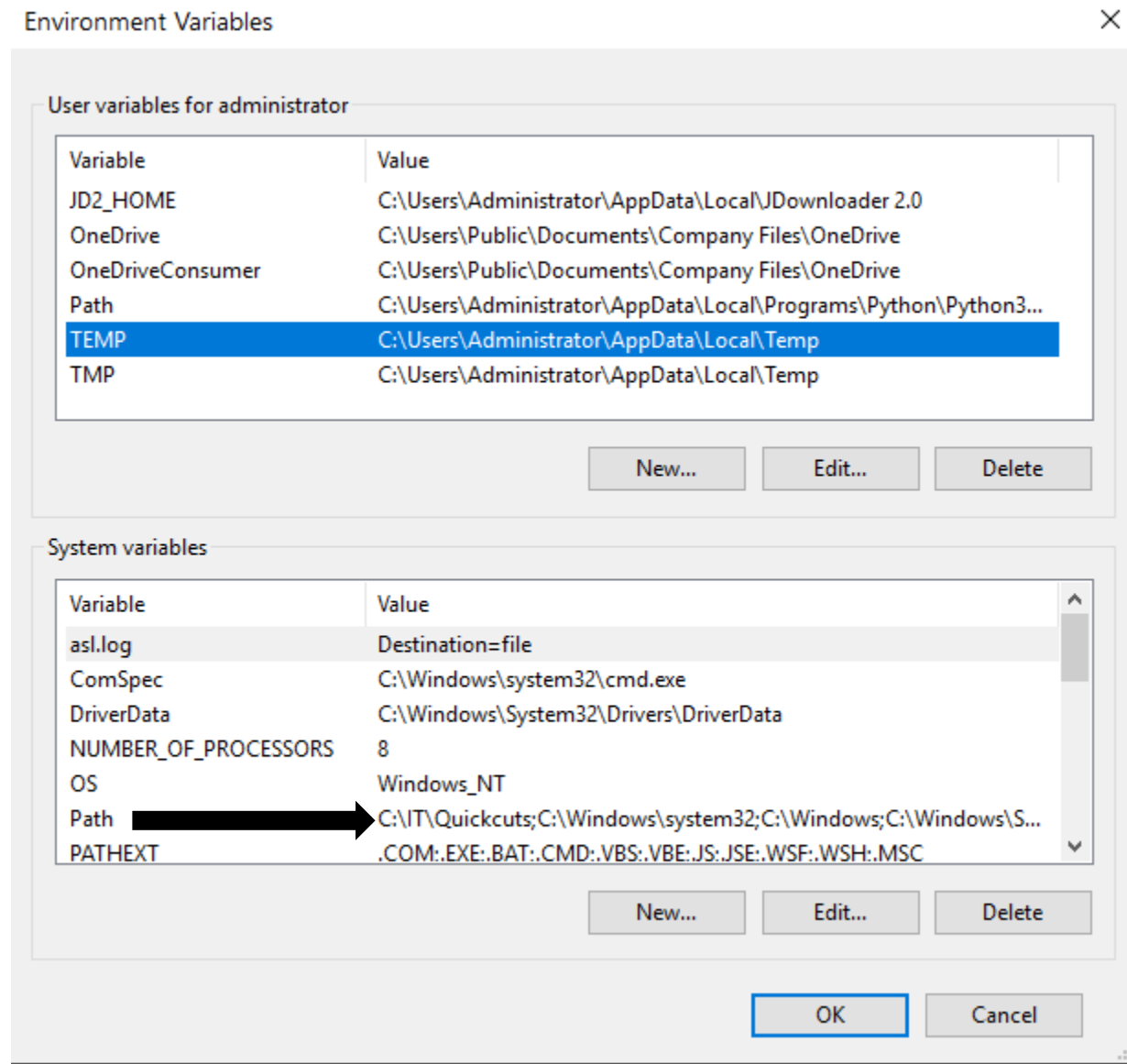
Related Objects

Scripts

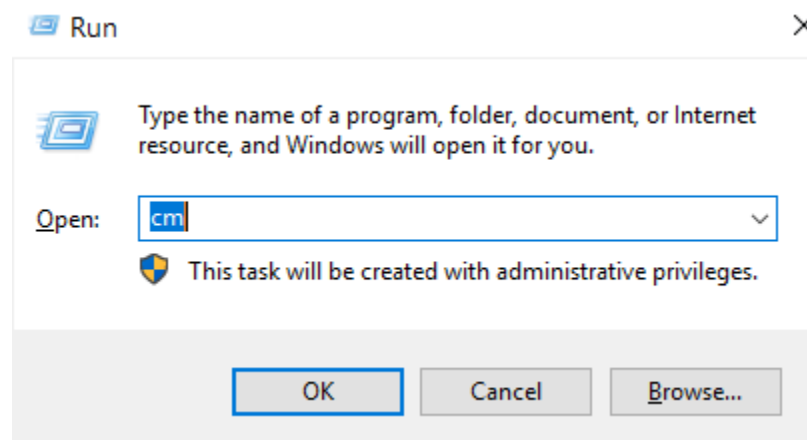
Completed: 3
Not Applicable: 0
Failed: 0
Unknown: 0
Offline: 0

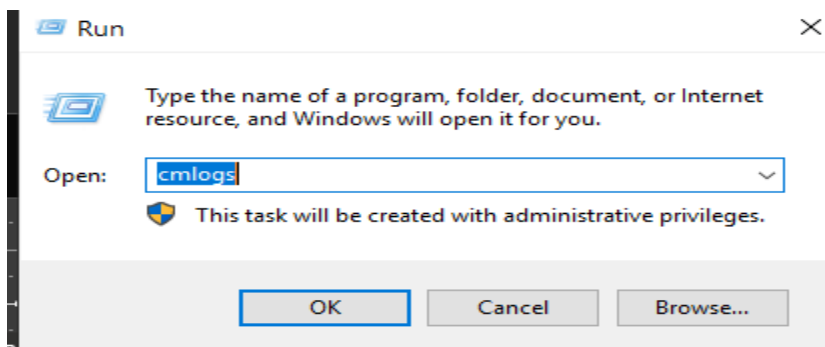
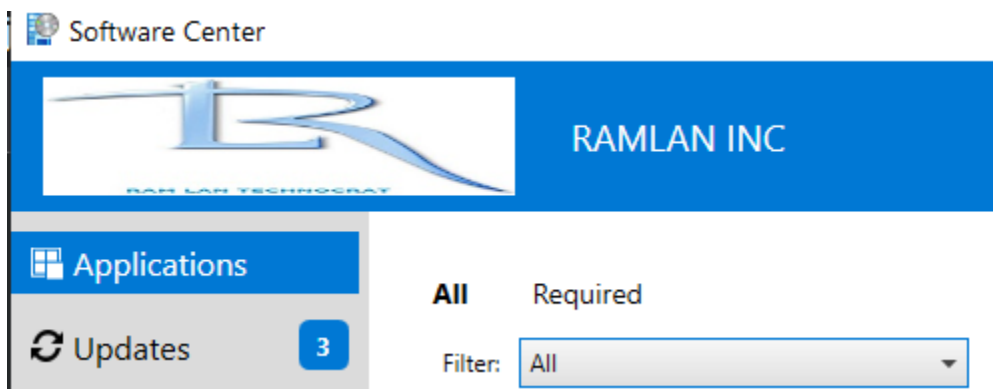
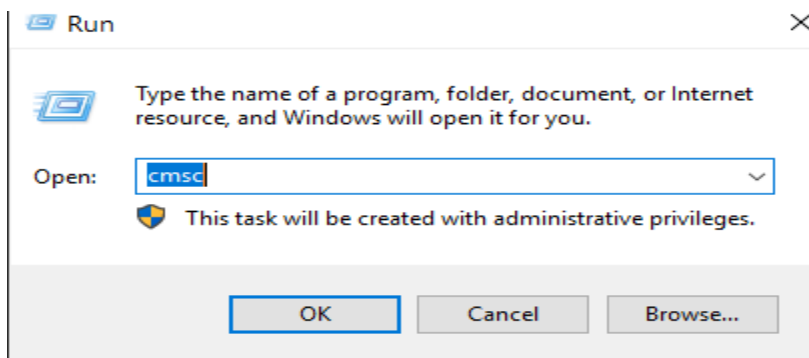
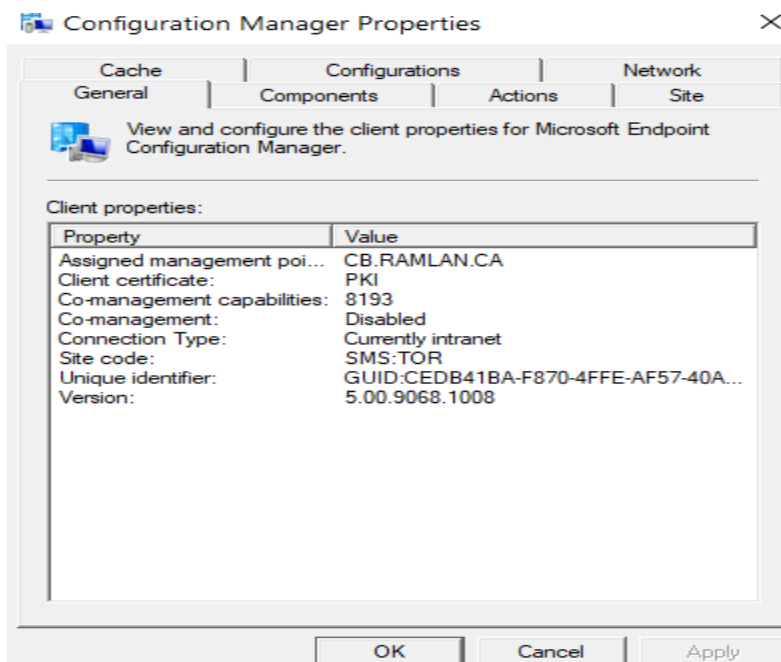
- Log file for the script will be located in **C:\Windows\CCM\logs\Scripts.log**

You will see this in Advanced System Settings when the script ran on the client machine



Press Windows + R and type CM



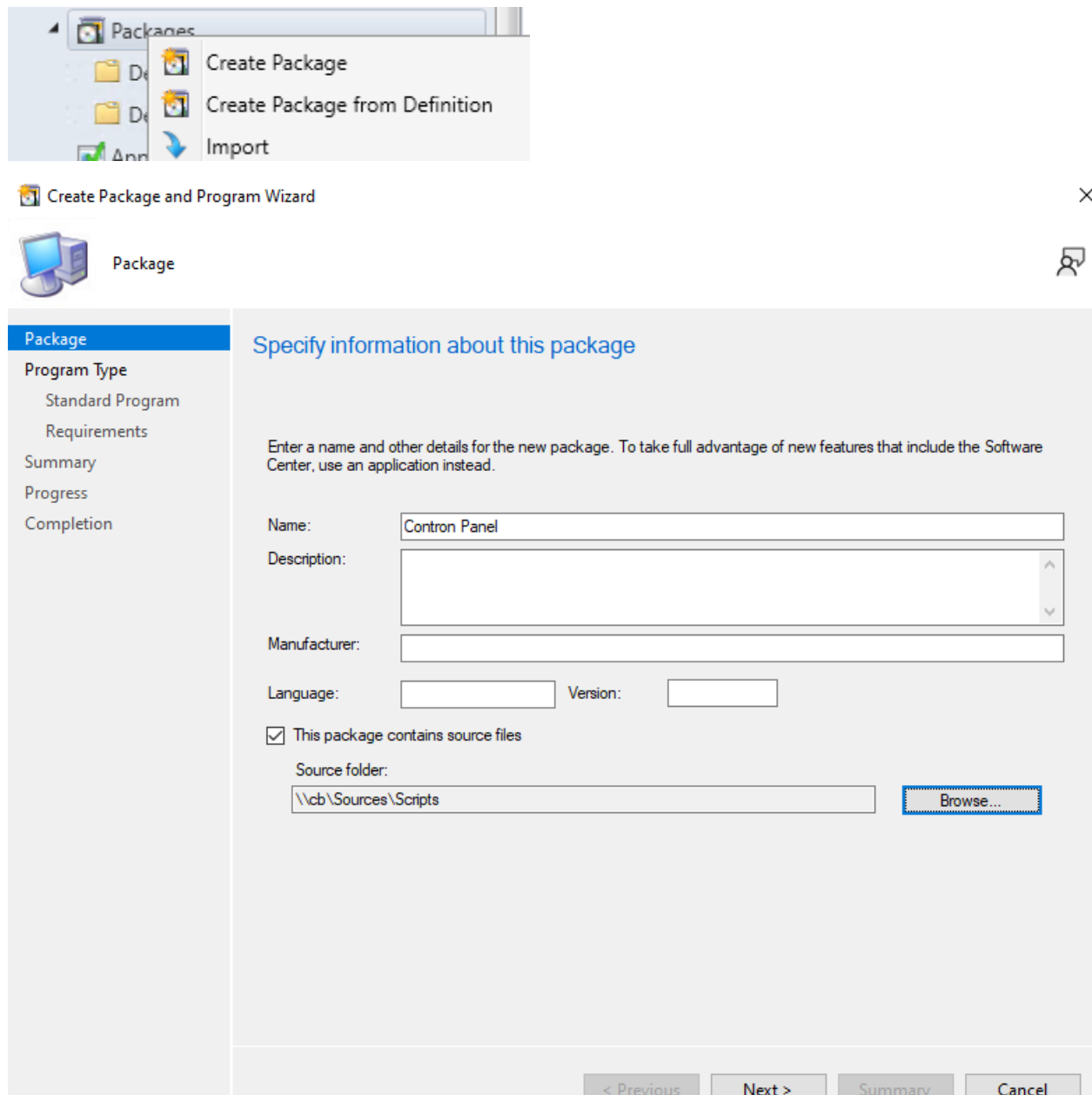


DC > OS (C:) > Windows > CCM > Logs				
Name	Date modified	Type	Size	
SCNotify_RAMLAN@administrator ...	18-Dec-2021 10:...	LOG File	19 KB	
SCClient_RAMLAN@administrator ...	18-Dec-2021 10:...	LOG File	16 KB	
SensorManagedProvider.Log	18-Dec-2021 10:...	LOG File	39 KB	
CcmSqlCE.log	18-Dec-2021 10:...	LOG File	193 KB	
StateMessageProvider.log	18-Dec-2021 10:...	LOG File	23 KB	
DdrProvider.log	18-Dec-2021 9:5...	LOG File	153 KB	

If the script is not working for you – you can run the script manually on the client system and then test the shortcut keys.

OR YOU CAN CREATE A PACKAGE

I will create a package and distribute and deploy to all systems. The details are as follows:



Create Package and Program Wizard

Package

Specify information about this package

Enter a name and other details for the new package. To take full advantage of new features that include the Software Center, use an application instead.

Name:

Description:

Manufacturer:

Language: Version:

☒ This package contains source files

Source folder:

< Previous Next > Summary Cancel

Create Package and Program Wizard

Program Type

Package
Program Type
Standard Program
Requirements
Summary
Progress
Completion

Choose the program type that you want to create

☒ Standard program
Create a program for a client computer.

☐ Program for device
Create a program for a device.

☐ Do not create a program
Create a package, but do not create a program. You can use the Create Program Wizard to add a program later.

< Previous Next > Summary Cancel

C:\Windows\System32\WindowsPowerShell\v1.0\powershell.exe -executionpolicy bypass -file
".\Quick.ps1"

Create Package and Program Wizard

Standard Program

Package
Program Type
Standard Program
Requirements
Summary
Progress
Completion

Specify information about this standard program

Name: CP

Command line: I:\v1.0\powershell.exe -executionpolicy bypass -file ".\Quick.ps1" Browse...

Startup folder:

Run: Normal

Program can run: Whether or not a user is logged on

Run mode: Run with administrative rights

☐ Allow users to view and interact with the program installation

Drive mode: Runs with UNC name

☐ Reconnect to distribution point at log on

< Previous Next > Summary Cancel



Requirements



- Package
- Program Type
 - Standard Program
 - Requirements**
- Summary
- Progress
- Completion

Specify the requirements for this standard program

☐ Run another program first

Package:

Browse...

Program:

☐ Always run this program first

Platform requirements

- ☒ This program can run on any platform
- ☐ This program can run only on specified platforms

- ☐ All Windows RT
- ☐ All Windows RT 8.1
- ☐ All Windows 10 (32-bit)
- ☐ All Windows 10 (64-bit)
- ☐ All Windows 10 (ARM64)
- ☐ All Windows 10 multi-session
- ☐ All Windows 11 (64-bit)
- ☐ All Windows 11 (ARM64)
- ☐ All Windows 11 Enterprise multi-session (64-bit)
- ☐ All Windows 7 (64-bit)

Estimated disk space:

MB

Maximum allowed run time (minutes):

< Previous

Next >

Summary

Cancel



Summary



- Package
- Program Type
 - Standard Program
 - Requirements
 - Summary**
- Progress
- Completion

Confirm the settings

Details:

General:

- Name: Contron Panel
- Description:
- Version:
- Publisher:
- Language:
- Source files: \\cb\Sources\Scripts
- Always obtain files from the source folder

Program Type: Standard Program

Program:

- Name: CP
- Command line: C:\Windows\System32\WindowsPowerShell\v1.0\powershell.exe -executionpolicy bypass -file ".\Quick.ps1"
- Start in:
- Run: Normal
- Run mode: Run with administrative rights
- Program can run: Whether or not a user is logged on
- Drive mode: Runs with UNC name

Requirements:

- Platforms supported: Any
- Estimated disk space: 1 MB
- Maximum allowed runtime(minutes): 20

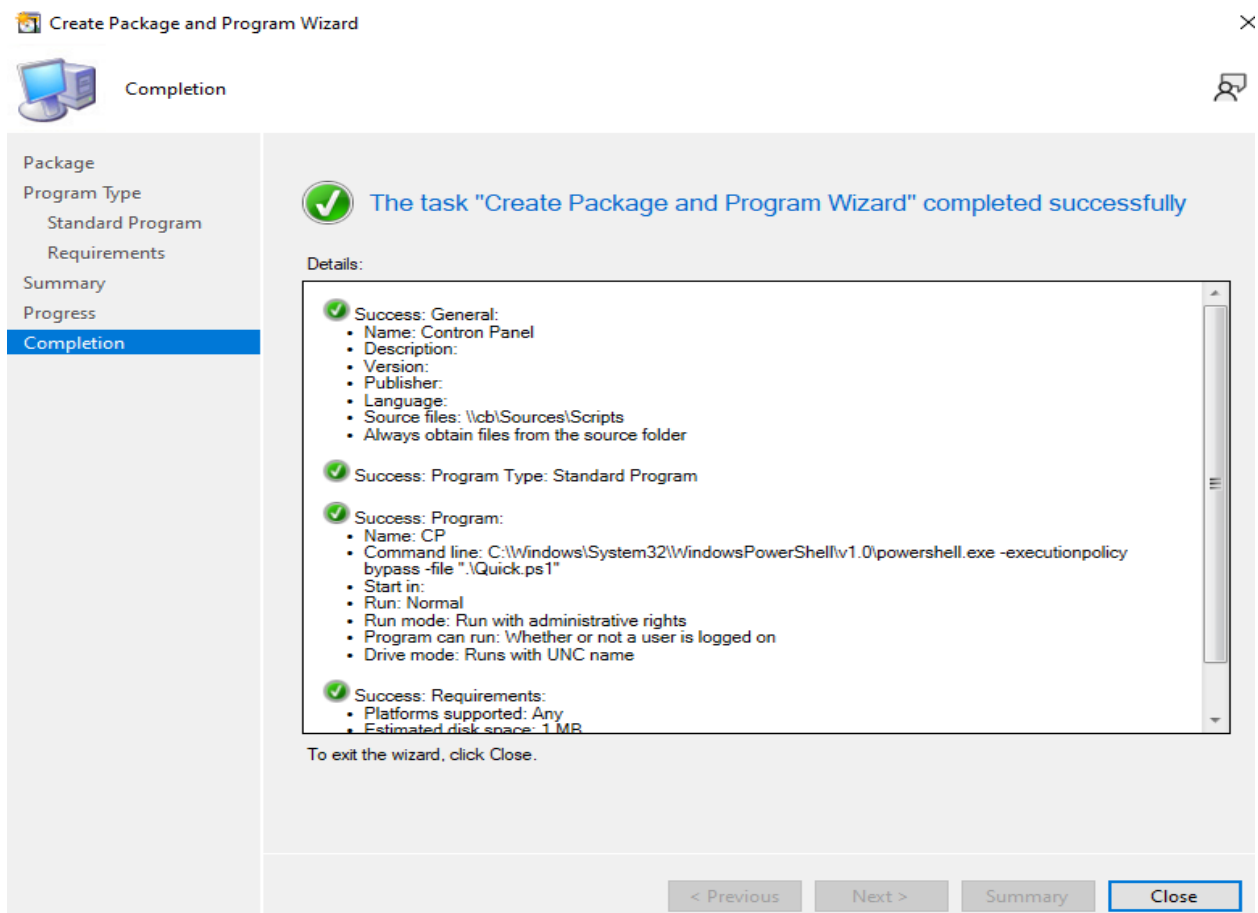
To change these settings, click Previous. To apply the settings, click Next.

< Previous

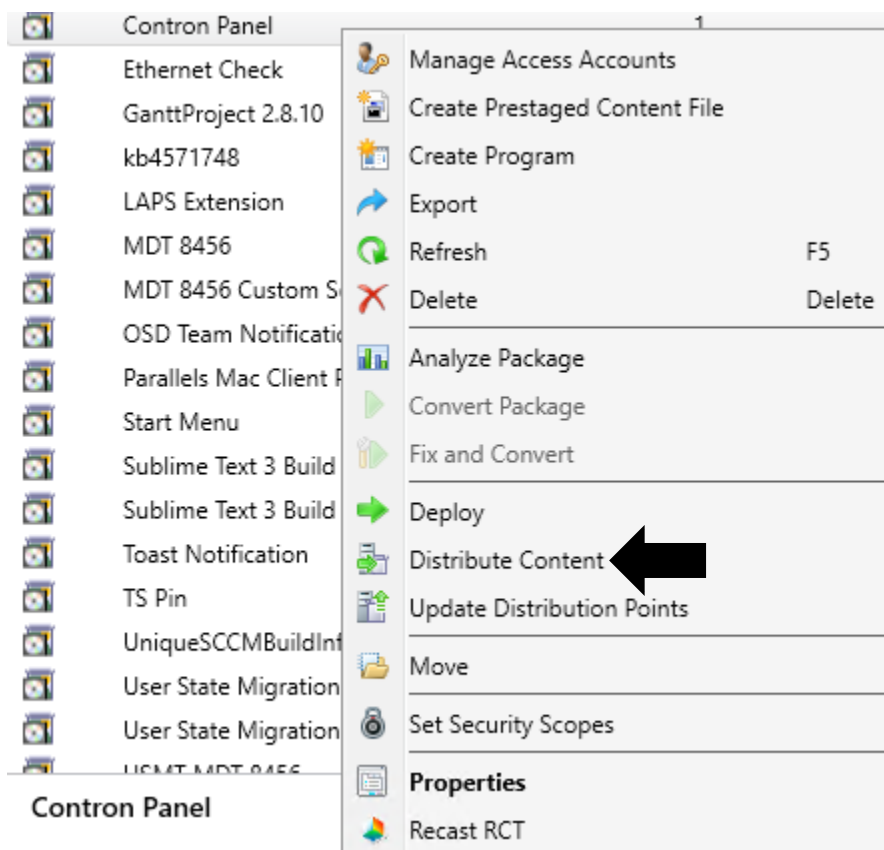
Next >

Summary

Cancel



Distribute Content and Deploy to All Systems Collection.





General

Content Destination

Summary

Progress

Completion

Review selected content

You have selected the following content for distribution.

Content:

Contron Panel

Some content might have associated dependencies that must be installed before the content can be installed.

☐ Detect associated content dependencies and add them to this distribution

< Previous

Next >

Summary

Cancel



General

Content Destination

Summary

Progress

Completion

Specify the content destination

Content will be distributed to the following distribution points, distribution point groups, and the distribution point groups that are currently associated with collections.

Content destination:

Filter...		
Name	Description	Associations
CB.RAMLAN.CA	Distribution point	
Toronto	Distribution point group	0

Add

Remove

< Previous

Next >

Summary

Cancel



Summary



General

Content Destination

Summary

Progress

Completion

Confirm the settings

Details:

- Content (1):
- Contron Panel
- Collections (0):
- Distribution point groups (1):
- Toronto
- Distribution points (1):
- CB.RAMLAN.CA

To change these settings, click Previous. To apply the settings, click Next.

< Previous

Next >

Summary

Cancel



Completion



General

Content Destination

Summary

Progress

Completion



The task "Distribute Content Wizard" completed successfully

Details:

- Content (1):
- Contron Panel
- Collections (0):
- Distribution point groups (1):
- Toronto
- Distribution points (1):
- CB.RAMLAN.CA

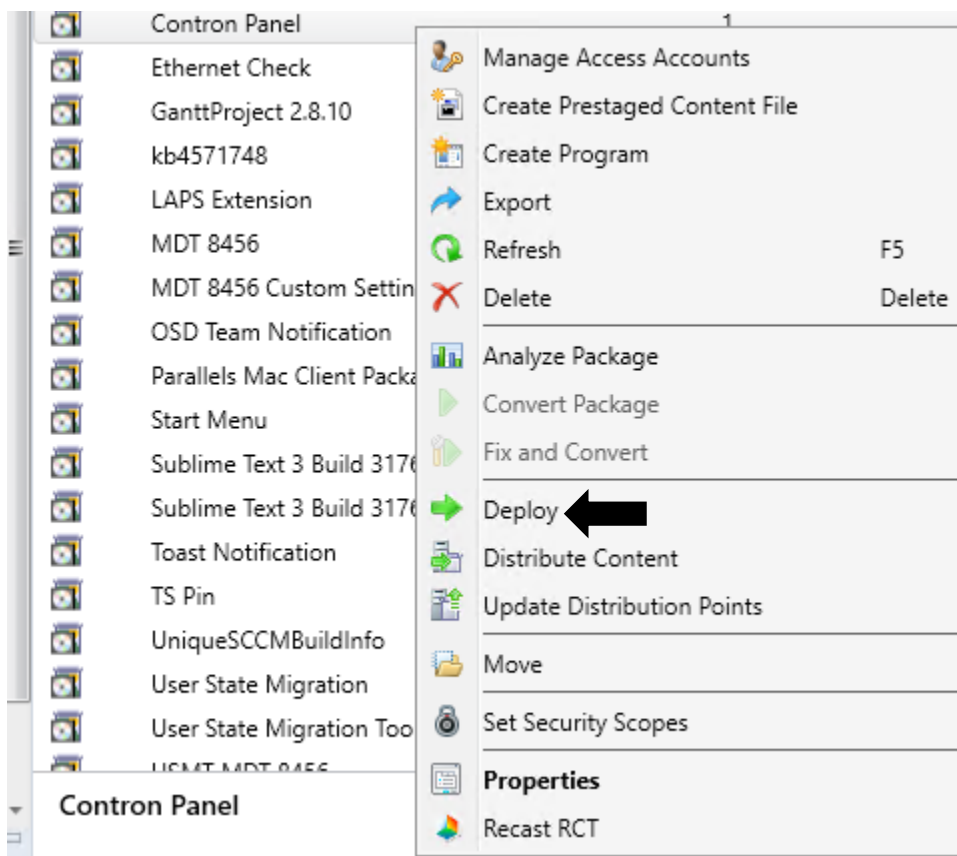
To exit the wizard, click Close.

< Previous

Next >

Summary

Close



➡ Deploy Software Wizard



General



General

Specify general information for this deployment

Software:

Collection:

☐ Use default distribution point groups associated to this collection

☐ Automatically distribute content for dependencies

Comments (optional):

< Previous Next > Summary Cancel



General

Content

Deployment Settings

Scheduling

User Experience

Distribution Points

Summary

Progress

Completion

Specify the content destination

Distribution points or distribution point groups that the content has been distributed to:

Name	Type
\\CB.RAMLAN.CA	Distribution point
Toronto	Distribution point group

Additional distribution points, distribution point groups, and the distribution point groups that are currently associated with collections to distribute content to:

Filter...			Add ▼
Name	Description	Associations	Remove
There are no items to show in this view.			

< Previous

Next >

Summary

Cancel



General

Content

Deployment Settings

Scheduling

User Experience

Distribution Points


Summary

Progress

Completion

Specify settings to control this deployment

Action: Install ▼

Purpose:  Required ▼☐ Pre-deploy software to the user's primary device☐ Send wake-up packets☐ Allow clients on a metered Internet connection to download content after the installation deadline, which might incur additional costs

< Previous

Next >

Summary

Cancel



General
Content
Deployment Settings
Scheduling
User Experience
Distribution Points
Summary
Progress
Completion

Specify the schedule for this deployment

This program will be available as soon as it has been distributed to the content servers unless it is scheduled for a later time below. For required applications, specify the assignment schedule.

☐ Schedule when this deployment will become available:

18-Dec-2021 11:16 AM ☐ UTC

☐ Schedule when this deployment will expire:

18-Dec-2021 11:16 AM ☐ UTC

Assignment schedule:

New...

Edit...

Delete

Occurs on 18-Dec-2021 11:17 AM

Rerun behavior:

Rerun if failed previous attempt

< Previous

Next >

Summary

Cancel



General
Content
Deployment Settings
Scheduling
User Experience
Distribution Points
Summary
Progress
Completion

Specify the user experience for the installation of this software:

Notification settings:

☐ Allow users to run the program independently of assignments

When the scheduled assignment time is reached, allow the following activities to be performed outside the maintenance window:

☐ Software installation

☐ System restart (if required to complete the installation)

Write filter handling for Windows Embedded devices

☒ Commit changes at deadline or during a maintenance window (requires restarts)

If this option is not selected, content will be applied on the overlay and committed later.

< Previous

Next >

Summary

Cancel



- General
- Content
- Deployment Settings
 - Scheduling
 - User Experience
 - Distribution Points**
- Summary
- Progress
- Completion

Specify how to run the content for this program according to the type of boundary the client is connected to

Select the deployment option to use when a client uses a distribution point from a current boundary group.

Deployment options:

Download content from distribution point and run locally

Select the deployment option to use when a client uses a distribution point from a neighbor boundary group or the default site boundary group.

Deployment options:

Download content from distribution point and run locally

When this content is not available on any distribution points in current and neighbor boundary groups, you can allow the client to use a distribution point in site default boundary group.

☒ Allow clients to use distribution points from the default site boundary group

< Previous

Next >

Summary

Cancel



- General
- Content
- Deployment Settings
 - Scheduling
 - User Experience
 - Distribution Points
 - Summary**
- Progress
- Completion

Confirm the settings for this new deployment

Details:

General

- Software: Contron Panel (CP)
- Collection: All Systems (Member Count: 10)
- Use default distribution point groups associated to this collection: Disabled
- Automatically distribute content for dependencies: Disabled

Deployment Settings

- Action: Install
- Purpose: Required
- Pre-deploy software to the user's primary device: Disabled
- Send wake-up packets: Disabled
- Allow clients to use a metered Internet connection to download content: Disabled

Scheduling

- Schedule when this deployment will become available: Disabled
- Schedule when this deployment will expire: Disabled
- Assignment schedule: 18-Dec-2021 11:17 AM (Local);
- Rerun behavior: Rerun if failed previous attempt

User Experience

- Allow users to run the program independently of assignments: Disabled
- Software installation: Disabled
- System restart (if required to complete the installation): Disabled
- Allow task sequence to run for client on the Internet: Disabled
- Commit changes at deadline or during a maintenance window (requires restarts): Enabled

To change these settings, click Previous. To apply the settings, click Next.

< Previous

Next >

Summary

Cancel



Completion



General

Content

Deployment Settings

Scheduling

User Experience

Distribution Points

Summary

Progress

Completion



The task "Deploy Software Wizard" completed successfully

Details:

- ✓ Success: General

 - Software: Contron Panel (CP)
 - Collection: All Systems (Member Count: 10)
 - Use default distribution point groups associated to this collection: Disabled
 - Automatically distribute content for dependencies: Disabled
- ✓ Success: Deployment Settings

 - Action: Install
 - Purpose: Required
 - Pre-deploy software to the user's primary device: Disabled
 - Send wake-up packets: Disabled
 - Allow clients to use a metered Internet connection to download content: Disabled
- ✓ Success: Scheduling

 - Schedule when this deployment will become available: Disabled
 - Schedule when this deployment will expire: Disabled
 - Assignment schedule: 18-Dec-2021 11:17 AM (Local)
 - Rerun behavior: Rerun if failed previous attempt
- ✓ Success: User Experience

 - Allow users to run the program independently of assignments: Disabled
 - Software installation: Disabled

To exit the wizard, click Close.

< Previous

Next >

Summary

Close

Now wait for sometime for the package to install through software center. No need to check since we selected the package as Required install.

Thanks

Ram

18th Dec 2021

Note – If you want the script let me know through comments section.