


Installing Windows Admin Center v2110

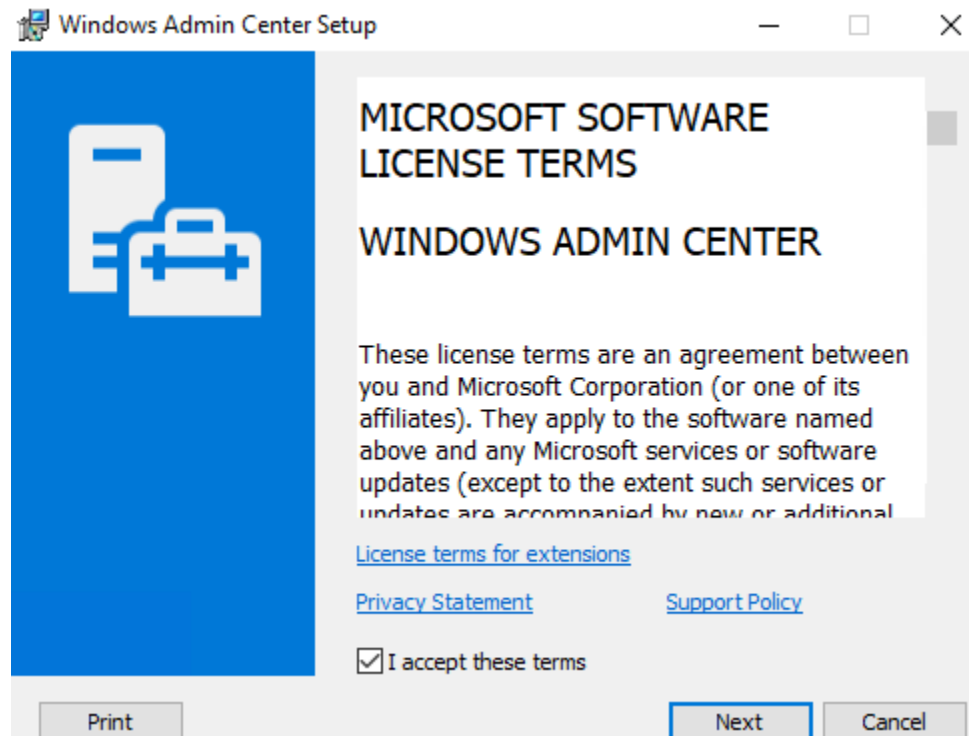
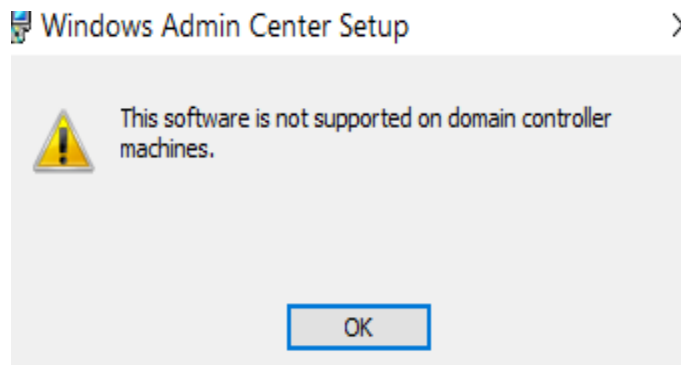
Microsoft released Windows Admin Center v2110 last week. I am going to install this on Windows Server 2022 for testing.

You can download from here - <https://t.co/AzFbDguNeA?amp=1>

Release Info/Doc - <https://docs.microsoft.com/en-us/windows-server/manage/windows-admin-center/support/release-history>

<https://techcommunity.microsoft.com/t5/windows-admin-center-blog/windows-admin-center-version-2110-is-now-generally-available/ba-p/2911579>

Downloads		
Name	Date modified	Type
 WindowsAdminCenter2110.msi	07-Nov-2021 8:09 AM	Windows Installer Package



Send diagnostic data to Microsoft

 Required diagnostic data

Send info about your installation of Windows Admin Center, its settings and capabilities, and whether it is performing properly. Diagnostic data is used to help keep Windows Admin Center secure and up to date, troubleshoot problems, and make product improvements. Regardless of your choice, your device will be equally secure and will operate normally.

 Required and optional diagnostic data

Send info about how you use features, plus additional info about application health, activity, and enhanced error reporting. Diagnostic data is used to help keep Windows Admin Center secure and up to date, troubleshoot problems, and make product improvements. Required diagnostic data will always be included when you choose to send Optional diagnostic data. Regardless of your choice, your device will be equally secure and will operate normally.

Back

Next

Cancel

Use Microsoft Update to help keep your computer secure and up-to-date



Microsoft Update offers security and important updates for Windows and other Microsoft products, including Windows Admin Center. Updates are delivered using your Automatic Updates settings, or you can visit the Microsoft Update Web site.

 Use Microsoft Update when I check for updates (recommended) I don't want to use Microsoft Update.[See the Microsoft Update FAQ](#)[Read our Privacy Statement online](#)

Back

Next

Cancel

Install Windows Admin Center on Windows Server



Use a gateway server to:

- Enable access for multiple admins
- Connect from any PC with a supported browser
- Manage computers on a private network

Or you can install on your PC to manage directly from it.

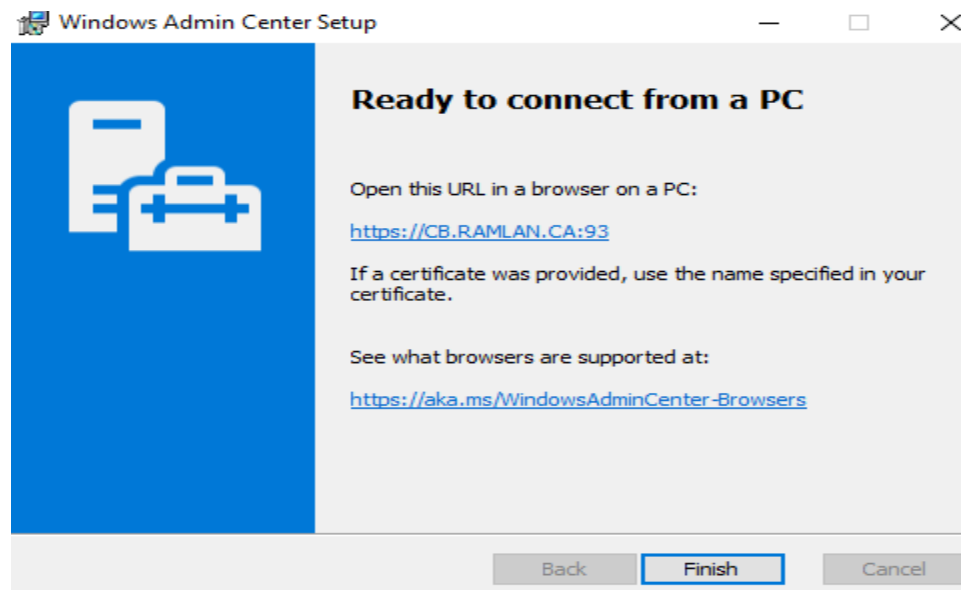
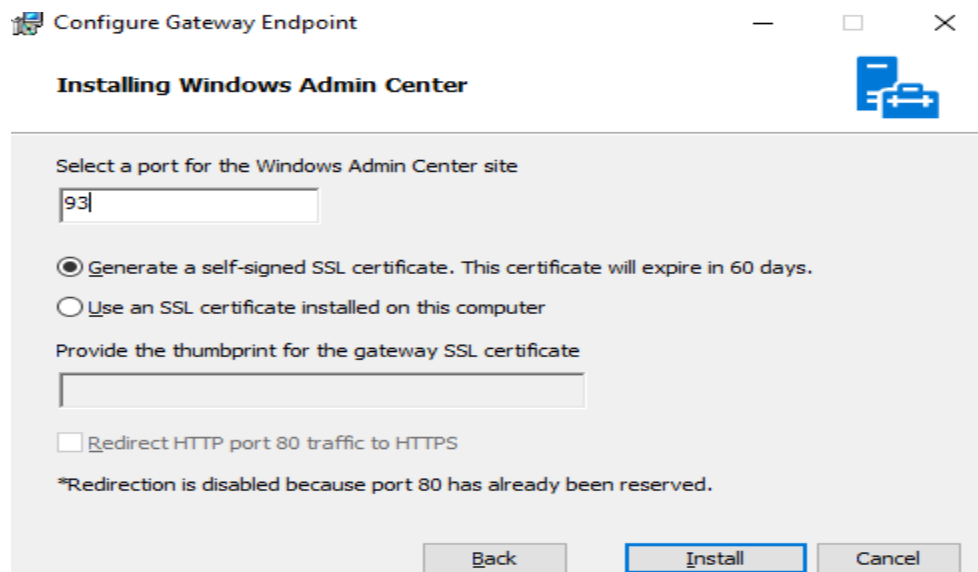
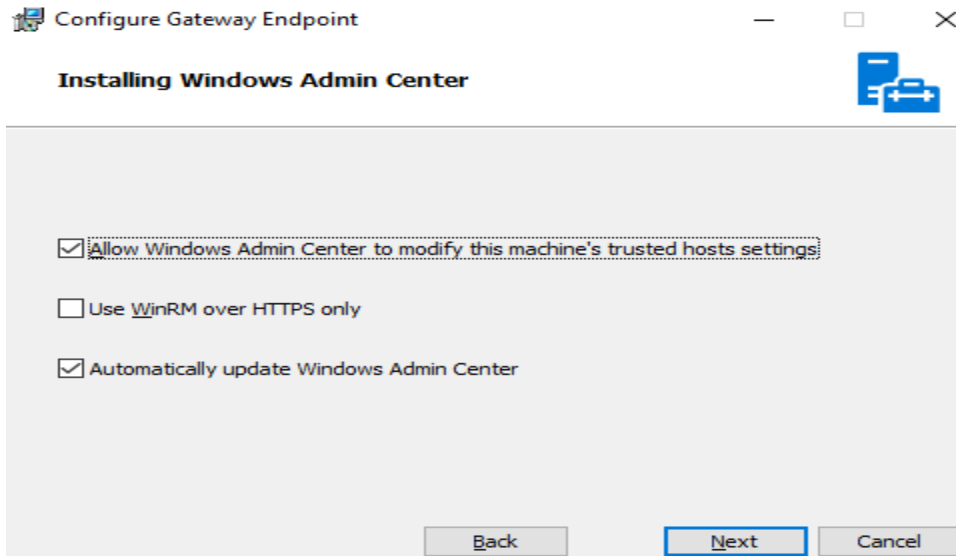
See installation scenarios at

<https://aka.ms/WindowsAdminCenter-Install>

Back

Next

Cancel



Login to the URL with admin credentials



Successfully installed version 2110

New in this release



Windows Admin Center upgraded to Angular 11 Improvement
Upgrading the front-end of our platform from Angular 7 to Angular 11 enhances security and performance across the product. We also updated our SDK so that extension developers can use it too.

Virtual Machine tool improvements

Improvement

We've improved the tool's performance and you can now create VHDs when adding a new disk to your VM. Azure Stack HCI clusters also get an updated dynamic processor compatibility mode.



Security tool New
This new tool centralizes some key security settings for servers and clusters, including the ability to easily view the Secured-core status of systems.

8 more items...

[Read what's new](#)

Windows Admin Center

Version	Build
2110	1.3.2111.01001

What's new

[Give us feedback](#)

[Documentation](#)

License terms for Windows Admin Center

PowerShell scripts use rights

License terms for extensions


[Privacy statement](#)

[Support policy](#)

3rd Party Software Notice

Keyboard shortcuts

What's new

Windows Admin Center version 2110. [Release notes](#) 

Improvement

11/2/2021



Windows Admin Center upgraded to Angular 11

Upgrading the front-end of our platform from Angular 7 to Angular 11 enhances security and performance across the product. We also updated our SDK so that extension developers can use it too.

[Learn more](#) 

Improvement

11/2/2021

Virtual Machine tool improvements

We've improved the tool's performance and you can now create VHDs when adding a new disk to your VM. Azure Stack HCI clusters also get an updated dynamic processor compatibility mode.

New

11/2/2021



Security tool

This new tool centralizes some key security settings for servers and clusters, including the ability to easily view the Secured-core status of systems.

Improvement

11/2/2021

New features when creating volumes on clusters

The Volumes tool in Cluster Manager now can create volumes with thin provisioning, nested resiliency, and optional stretched cluster features.

[Learn more](#) 

New

11/2/2021

Feature updates for Azure Stack HCI

The Updates tool has an improved history page and also can upgrade clusters to Azure Stack HCI, version 21H2.

[Learn more](#) 

New

11/2/2021

Simplify Azure Stack HCI host networking with Network ATC

When deploying an Azure Stack HCI cluster, specify which adapters should carry each traffic type and then automatically deploy and maintain the configuration on the cluster.

[Learn more](#) 

New

11/2/2021

GPU tool for Azure Stack HCI

Use this new tool to manage GPUs on Azure Stack HCI and use Discrete Device Assign (DDA) to assign GPUs to clustered VMs.

New

11/2/2021

Automatic VM activation for Azure Stack HCI

You can now set up Azure Stack HCI clusters to automatically activate Windows Server VMs. To do so, connect to the cluster and then go to Settings > Activate Windows Server VMs.

[Learn more](#)

New

11/2/2021

Set up SDN at any time on Azure Stack HCI

You can now set up SDN after creating the cluster in addition to during cluster creation.

[Learn more](#)

New

11/2/2021

Support for new operating systems

Windows Admin Center now supports managing systems running Windows Server 2022 and Azure Stack HCI, version 21H2.

New

11/2/2021

Azure hybrid services are available in Azure US Government

You can now register Windows Admin Center with the Azure US Government region to use Azure hybrid services.

[Windows Admin Center release history](#)

Back

Click Add button to add Servers/Windows PC/Azure VMs

The screenshot shows the Windows Admin Center interface. On the left, there is a table with columns for Name and Type. The table contains one entry: 'cb.ramlan.ca (Gateway)' with Type 'Servers'. Above the table are buttons for '+ Add', 'Connect', 'Manage as', 'Remove', and 'Edit Tags'. On the right, a dialog titled 'Add or create resources' is open. It prompts the user to 'Choose the type of resource that you want to add or create.' and offers four options:

- Servers**: Connect to servers running Windows Server or Azure Stack HCI. (Add button)
- Windows PCs**: Connect to Windows PCs. (Add button)
- Server clusters**: Add or create clusters running Windows Server or Azure Stack HCI. (Add and Create new buttons)
- Azure VMs**: Add or create Azure virtual machines that run Windows Server. (Add and Create new buttons)

Connection tags ⓘ

+ Add tags

[Add one](#) [Import a list](#) [Search Active Directory](#)

EX2019

Search

1 item 1 selected ✕

✓ Name ↑	Type	Login name
✓ EX2019.RAMLAN.CA	computer	RAMLAN.CA\EX201...

Add

Cancel

✓ **Successfully added connections...** ✕
ex2019.ramlan.ca was added to your connection list.
Server connections 8:44:00 AM

Connection tags ⓘ

+ Add tags

Add one Import a list Search Active Directory

DC Search

1 item 1 selected ✕




✓ Name ↑	Type	Login name
✓ DC.RAMLAN.CA	computer	RAMLAN.CA\DC\$

Add Cancel

✓ **Successfully added connections...** ✕
dc.ramlan.ca was added to your connection list.
Server connections 8:44:53 AM

Windows Admin Center | All connections ▾ Microsoft

+ Add Connect Manage as Remove Edit Tags

<input type="checkbox"/> Name ↑	Type	Last connected	Managing as
 cb.ramlan.ca (Gateway)	Servers	Never	RAMLAN\Administrator
 dc.ramlan.ca	Servers	Never	RAMLAN\Administrator
 ex2019.ramlan.ca	Servers	Never	RAMLAN\Administrator

Now you can manage remote servers from one centralized location.

Thanks

Ram
7th Nov 2021