



Installing Windows 11 – Hyper-V Virtual Machine

I am going to create a VM within Hyper-V to test Windows 11. Here are the Screen shot.

I was able to download the file. Provided the link at the end of the doc.

 New Virtual Machine Wizard

 **Specify Name and Location**

Before You Begin

Specify Name and Location

Specify Generation

Assign Memory

Configure Networking

Connect Virtual Hard Disk

Installation Options

Summary

Choose a name and location for this virtual machine.


The name is displayed in Hyper-V Manager. We recommend that you use a name that helps you easily identify this virtual machine, such as the name of the guest operating system or workload.


Name:


You can create a folder or use an existing folder to store the virtual machine. If you don't select a folder, the virtual machine is stored in the default folder configured for this server.

☒ Store the virtual machine in a different location

Location:

 If you plan to take checkpoints of this virtual machine, select a location that has enough free space. Checkpoints include virtual machine data and may require a large amount of space.

 New Virtual Machine Wizard

 **Specify Generation**

Before You Begin

Specify Name and Location

Specify Generation

Assign Memory

Configure Networking

Connect Virtual Hard Disk

Installation Options

Summary


Choose the generation of this virtual machine.

☐ Generation 1

This virtual machine generation supports 32-bit and 64-bit guest operating systems and provides virtual hardware which has been available in all previous versions of Hyper-V.

☒ Generation 2

This virtual machine generation provides support for newer virtualization features, has UEFI-based firmware, and requires a supported 64-bit guest operating system.

 Once a virtual machine has been created, you cannot change its generation.

[More about virtual machine generation support](#)



Assign Memory

Before You Begin

Specify Name and Location

Specify Generation

Assign Memory

Configure Networking

Connect Virtual Hard Disk

Installation Options

Summary

Specify the amount of memory to allocate to this virtual machine. You can specify an amount from 32 MB through 12582912 MB. To improve performance, specify more than the minimum amount recommended for the operating system.

Startup memory: MB

☐ Use Dynamic Memory for this virtual machine.

i When you decide how much memory to assign to a virtual machine, consider how you intend to use the virtual machine and the operating system that it will run.

< Previous

Next >

Finish

Cancel



Configure Networking

Before You Begin

Specify Name and Location

Specify Generation

Assign Memory

Configure Networking

Connect Virtual Hard Disk

Installation Options

Summary

Each new virtual machine includes a network adapter. You can configure the network adapter to use a virtual switch, or it can remain disconnected.

Connection:

< Previous

Next >

Finish

Cancel



Connect Virtual Hard Disk

Before You Begin
Specify Name and Location
Specify Generation
Assign Memory
Configure Networking
Connect Virtual Hard Disk
Installation Options
Summary

A virtual machine requires storage so that you can install an operating system. You can specify the storage now or configure it later by modifying the virtual machine's properties.

☒ Create a virtual hard disk

Use this option to create a VHDX dynamically expanding virtual hard disk.

Name:
Location:
Size: GB (Maximum: 64 TB)

☐ Use an existing virtual hard disk

Use this option to attach an existing VHDX virtual hard disk.

Location:

☐ Attach a virtual hard disk later

Use this option to skip this step now and attach an existing virtual hard disk later.



Installation Options

Before You Begin
Specify Name and Location
Specify Generation
Assign Memory
Configure Networking
Connect Virtual Hard Disk
Installation Options
Summary

You can install an operating system now if you have access to the setup media, or you can install it later.

☐ Install an operating system later

☒ Install an operating system from a bootable image file

Media
Image file (.iso):

☐ Install an operating system from a network-based installation server



Completing the New Virtual Machine Wizard

Before You Begin

Specify Name and Location

Specify Generation

Assign Memory

Configure Networking

Connect Virtual Hard Disk

Installation Options

Summary

You have successfully completed the New Virtual Machine Wizard. You are about to create the following virtual machine.

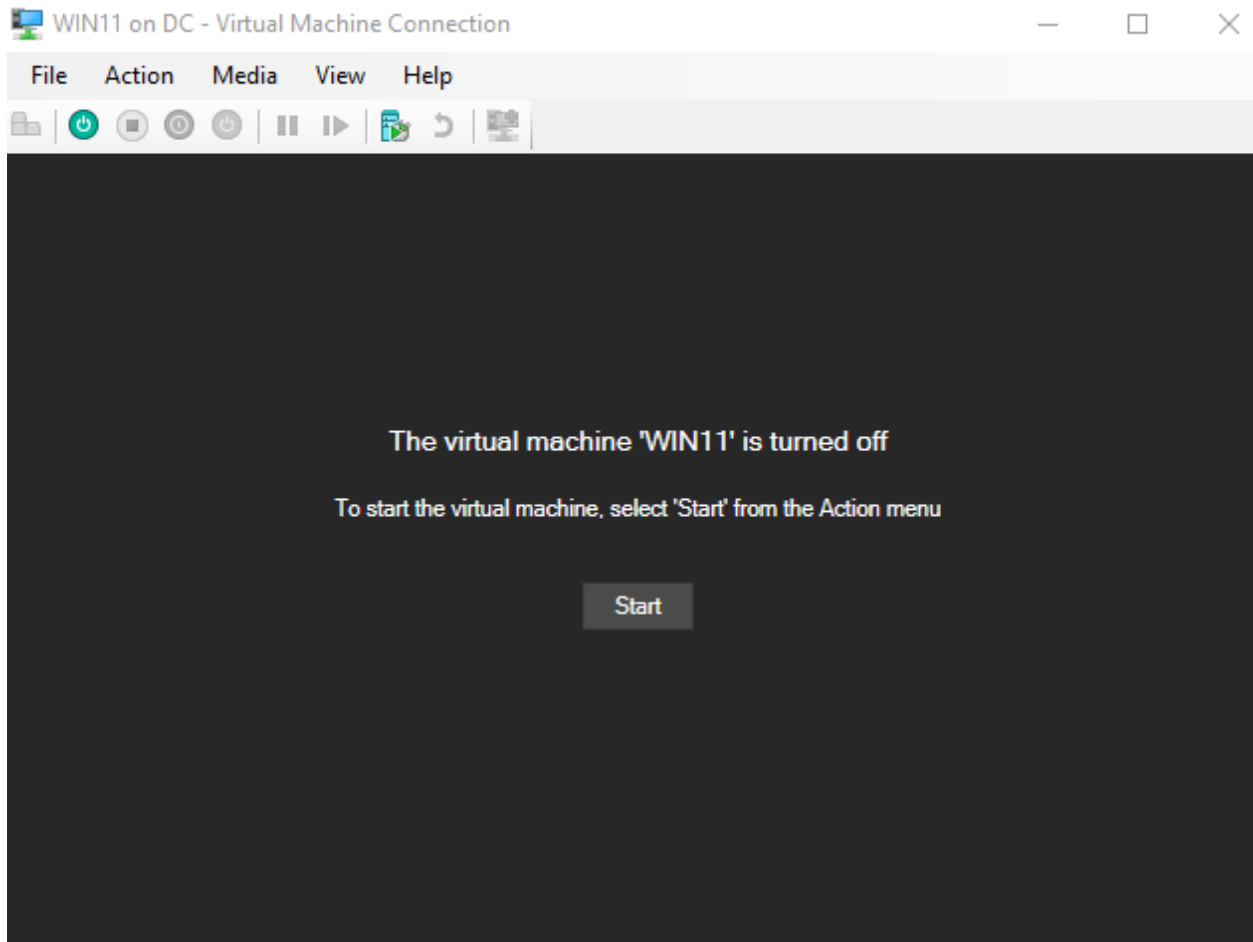
Description:

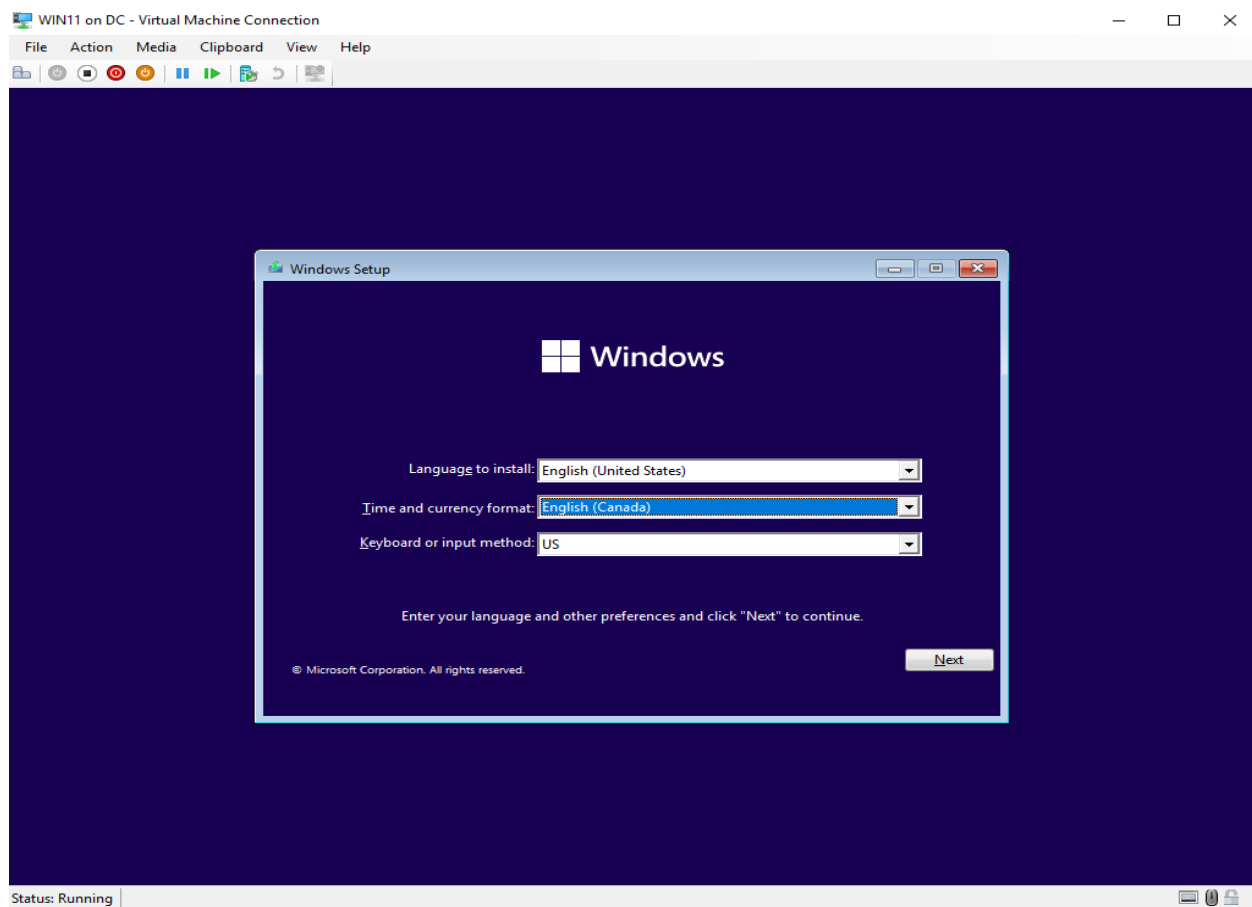
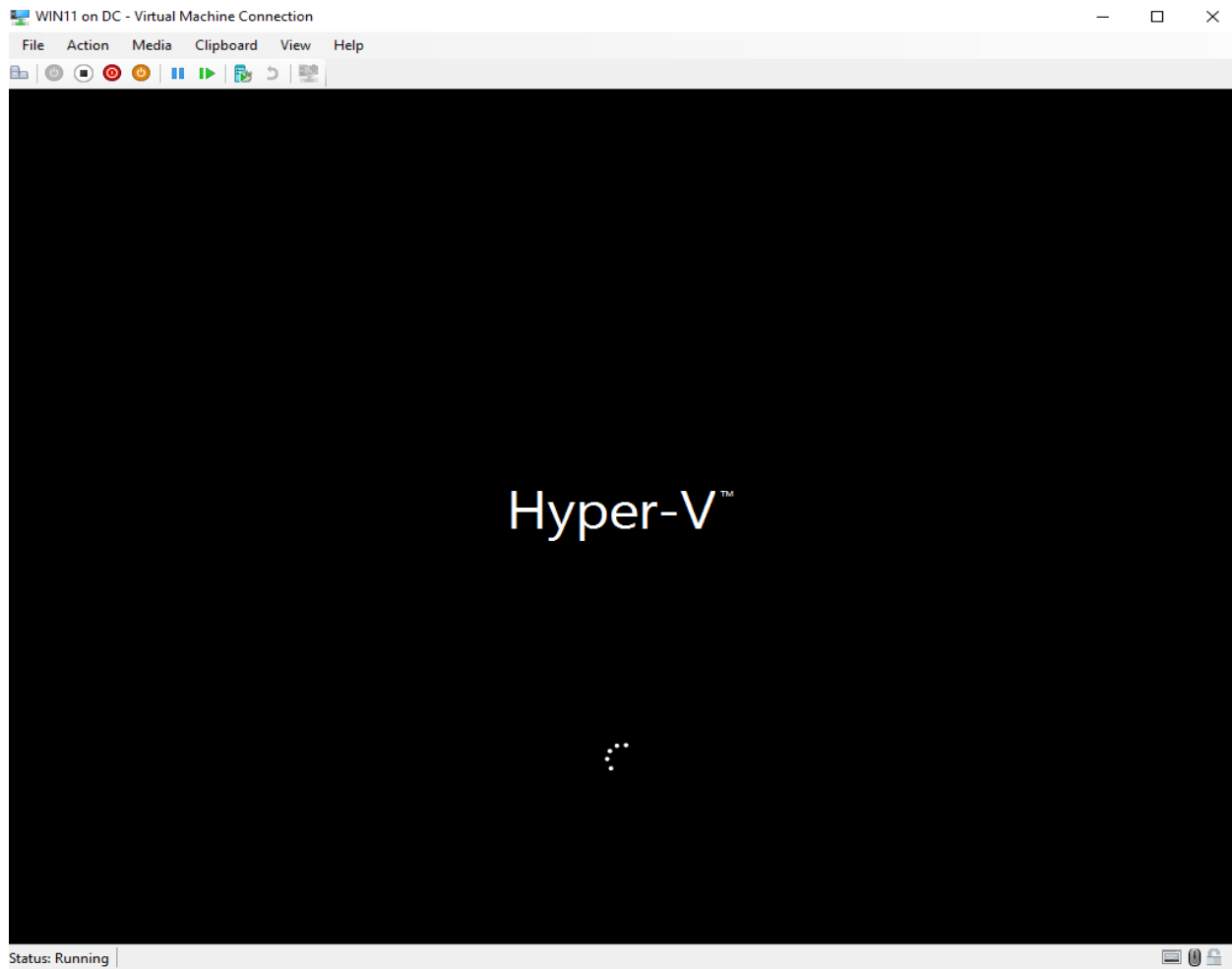
Name:	WIN11
Generation:	Generation 2
Memory:	4048 MB
Network:	Realtek PCIe GBE Family Controller - Virtual Switch
Hard Disk:	C:\VM\WIN11\Virtual Hard Disks\WIN11.vhdx (VHDX, dynamically expanding)
Operating System:	Will be installed from C:\Users\Administrator\Downloads\21996.1.210529-1541.c

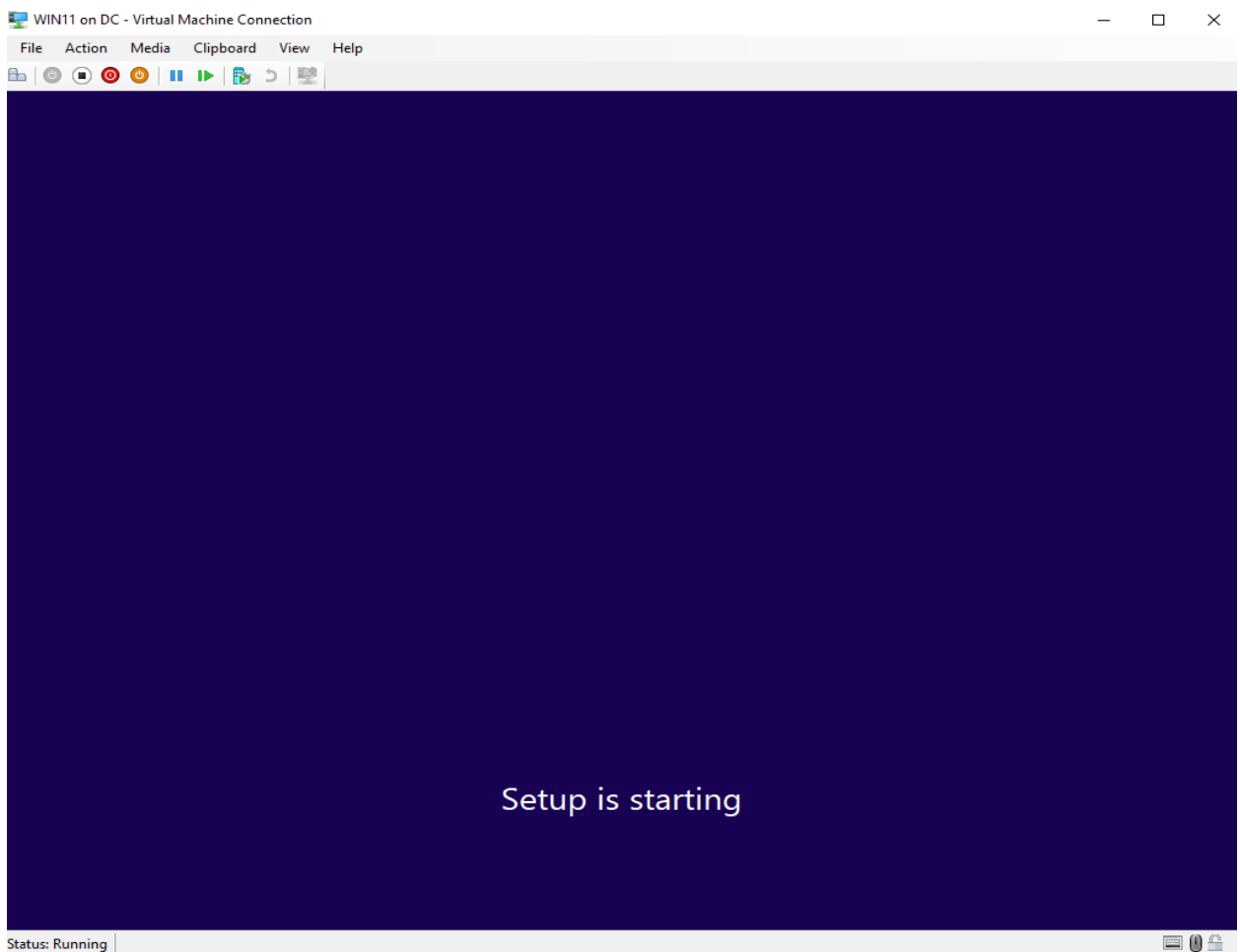
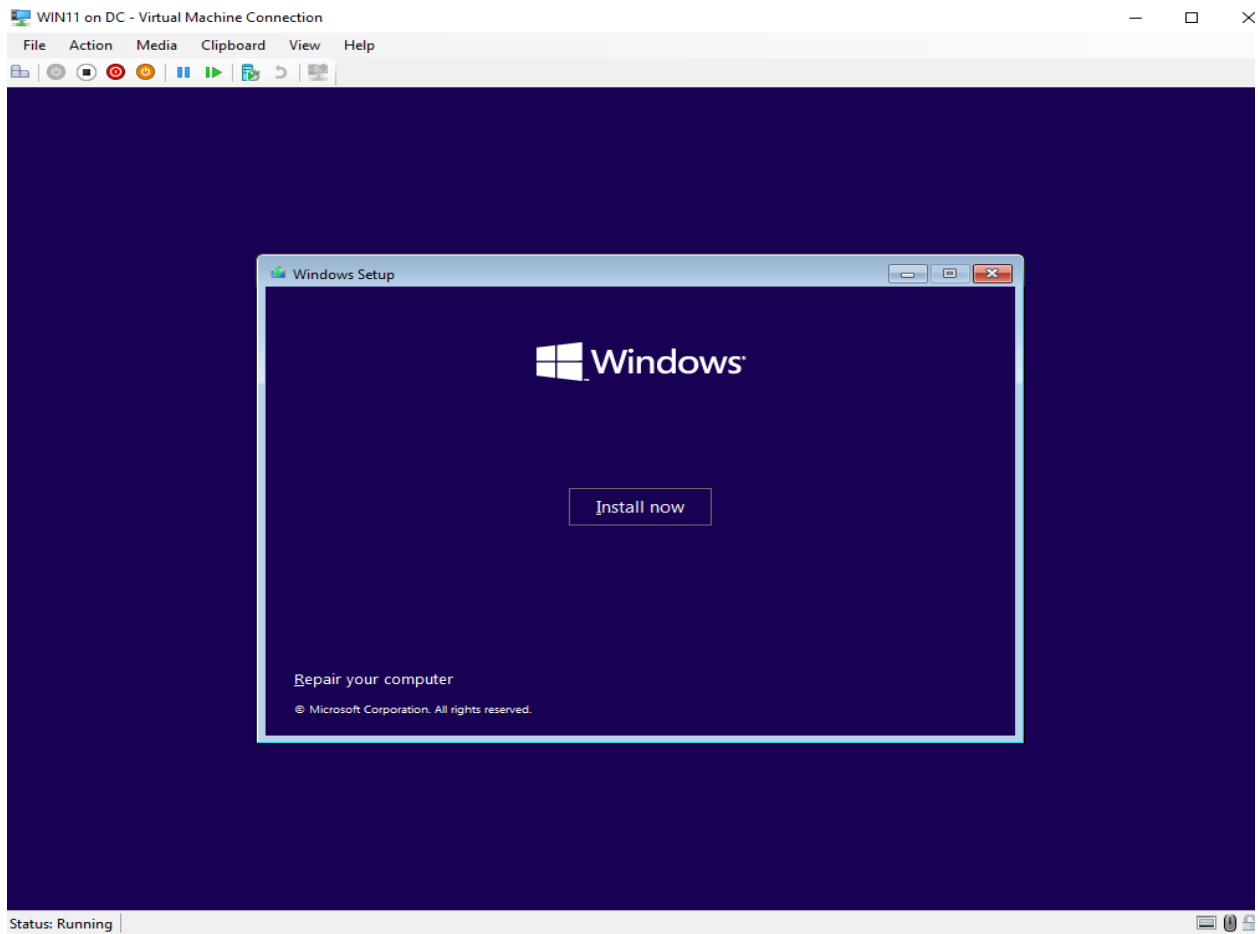
< >

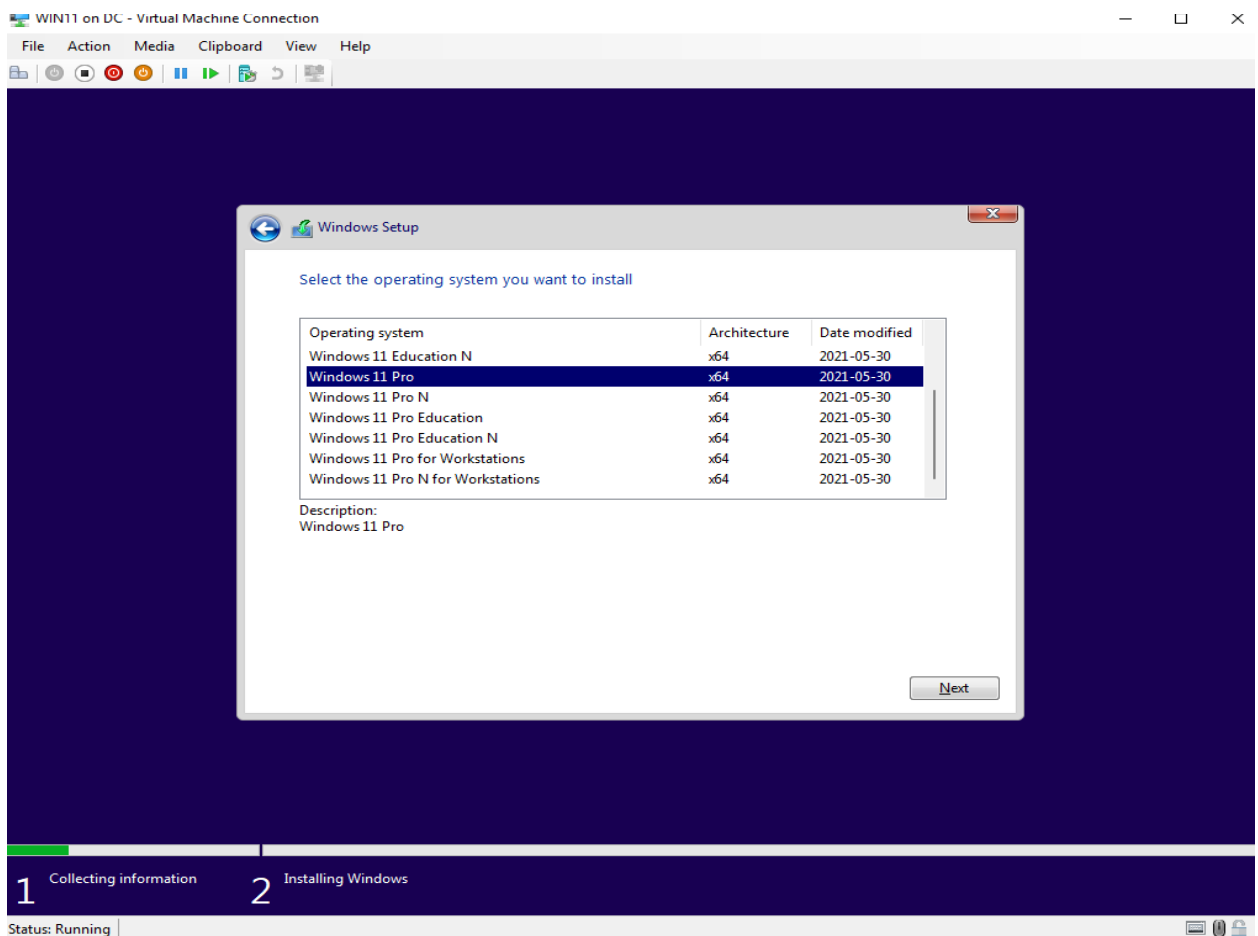
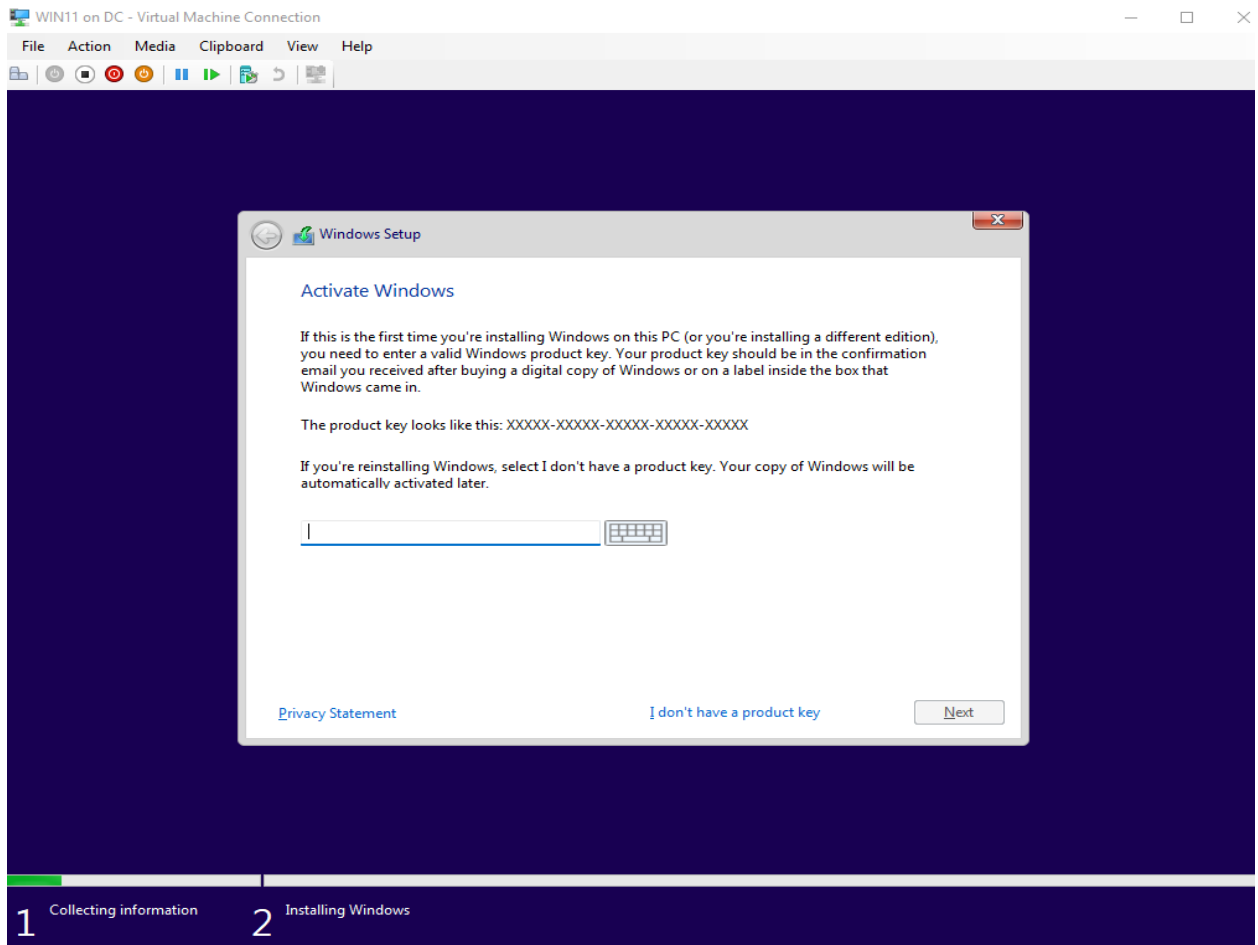
To create the virtual machine and close the wizard, click Finish.

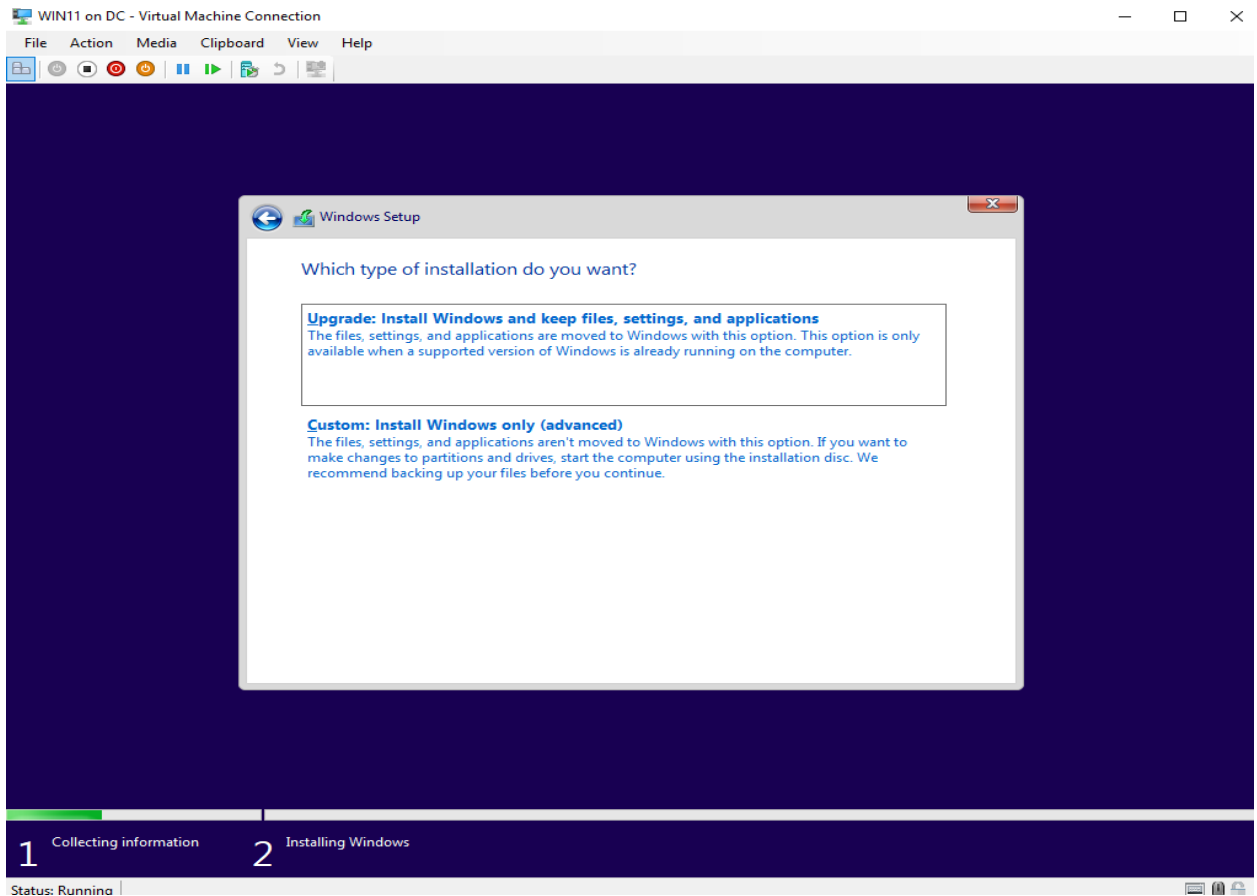
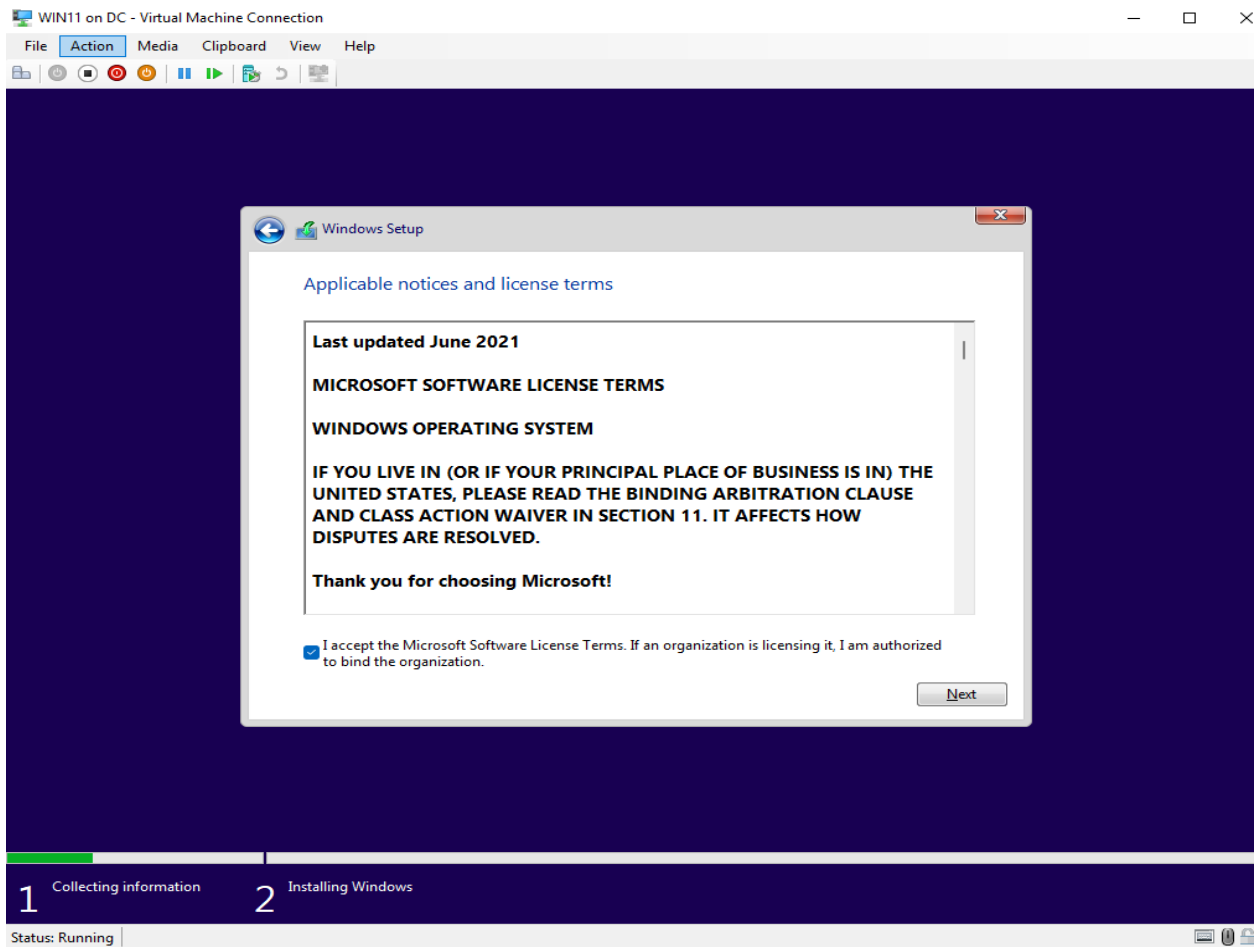
< Previous Next > **Finish** Cancel

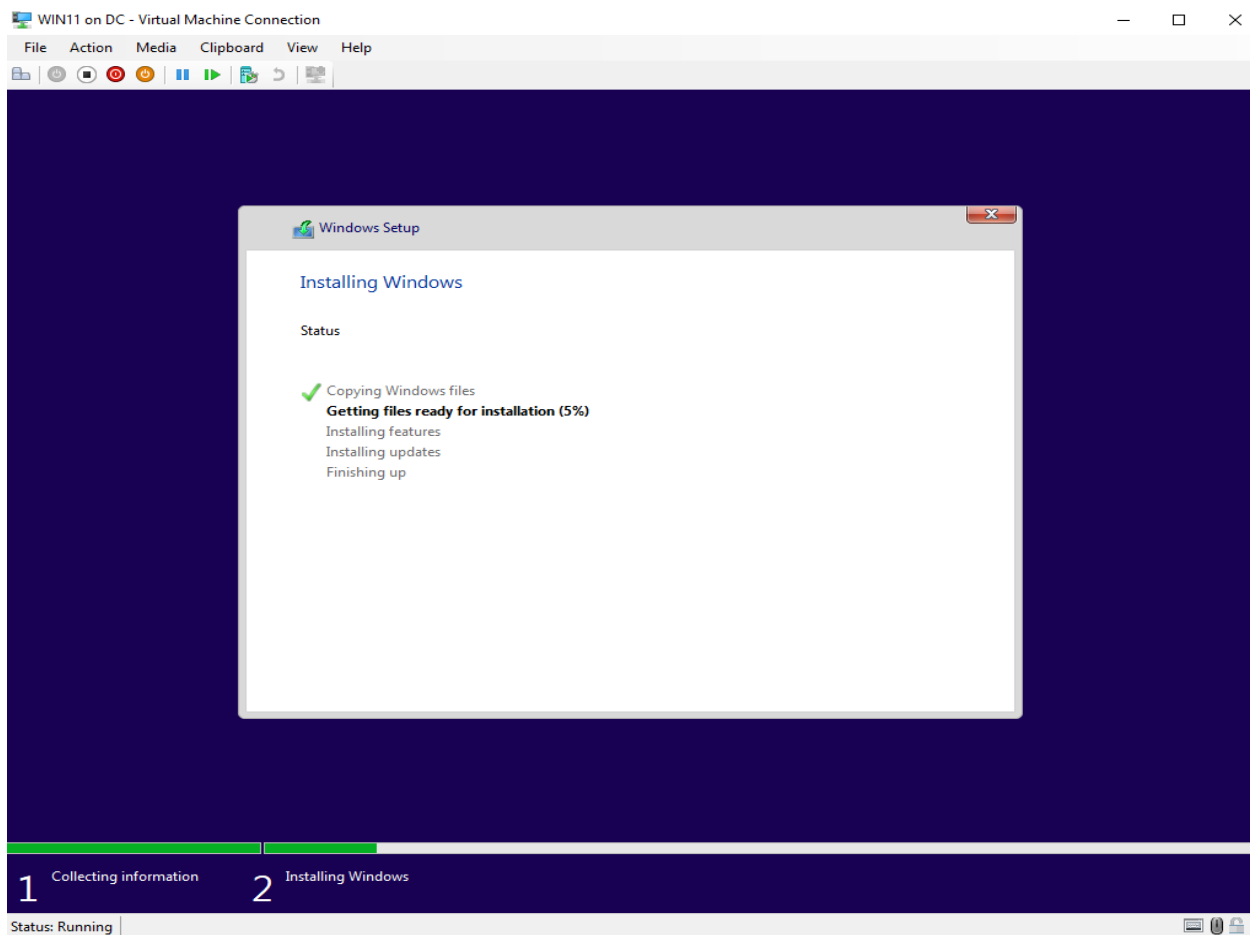
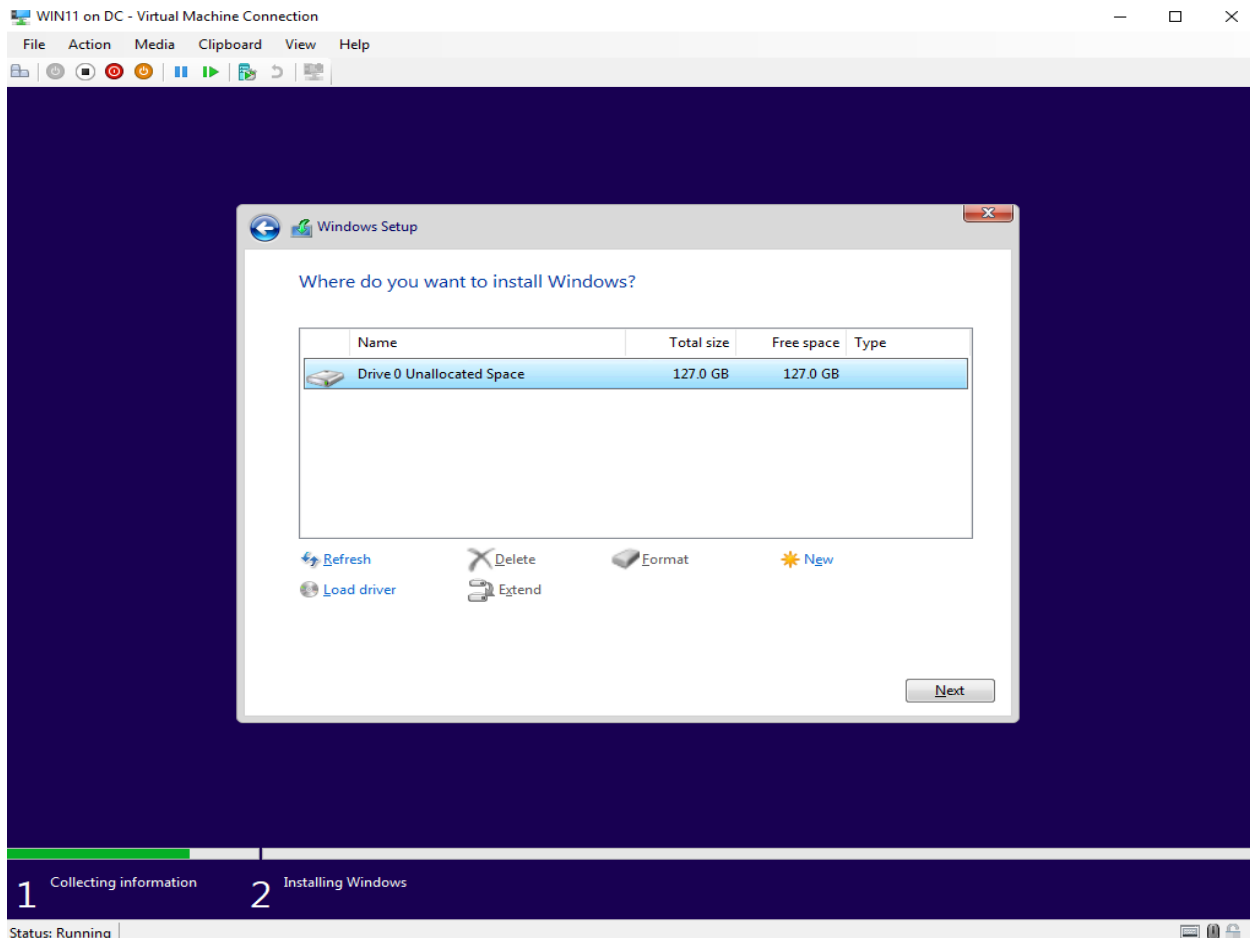


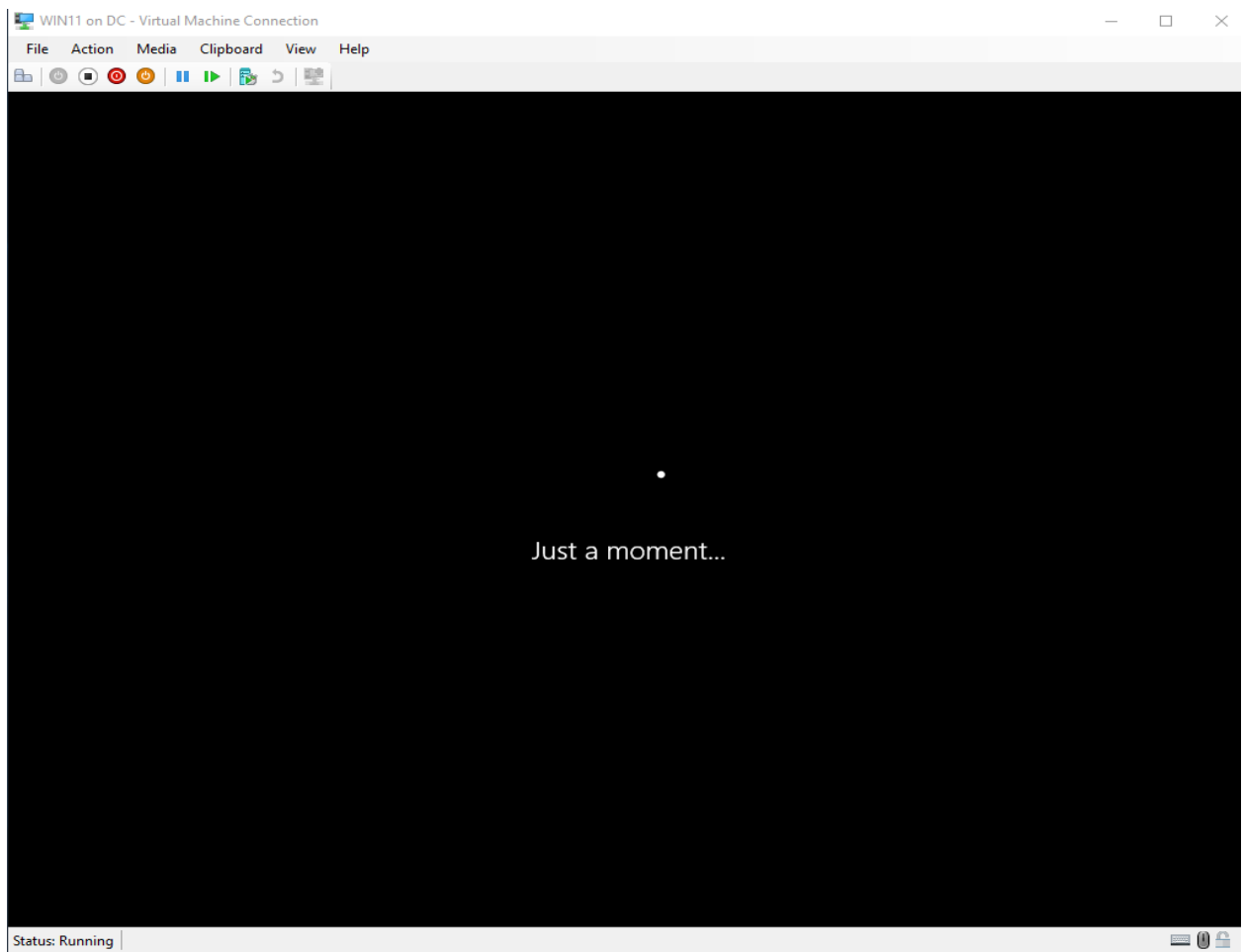
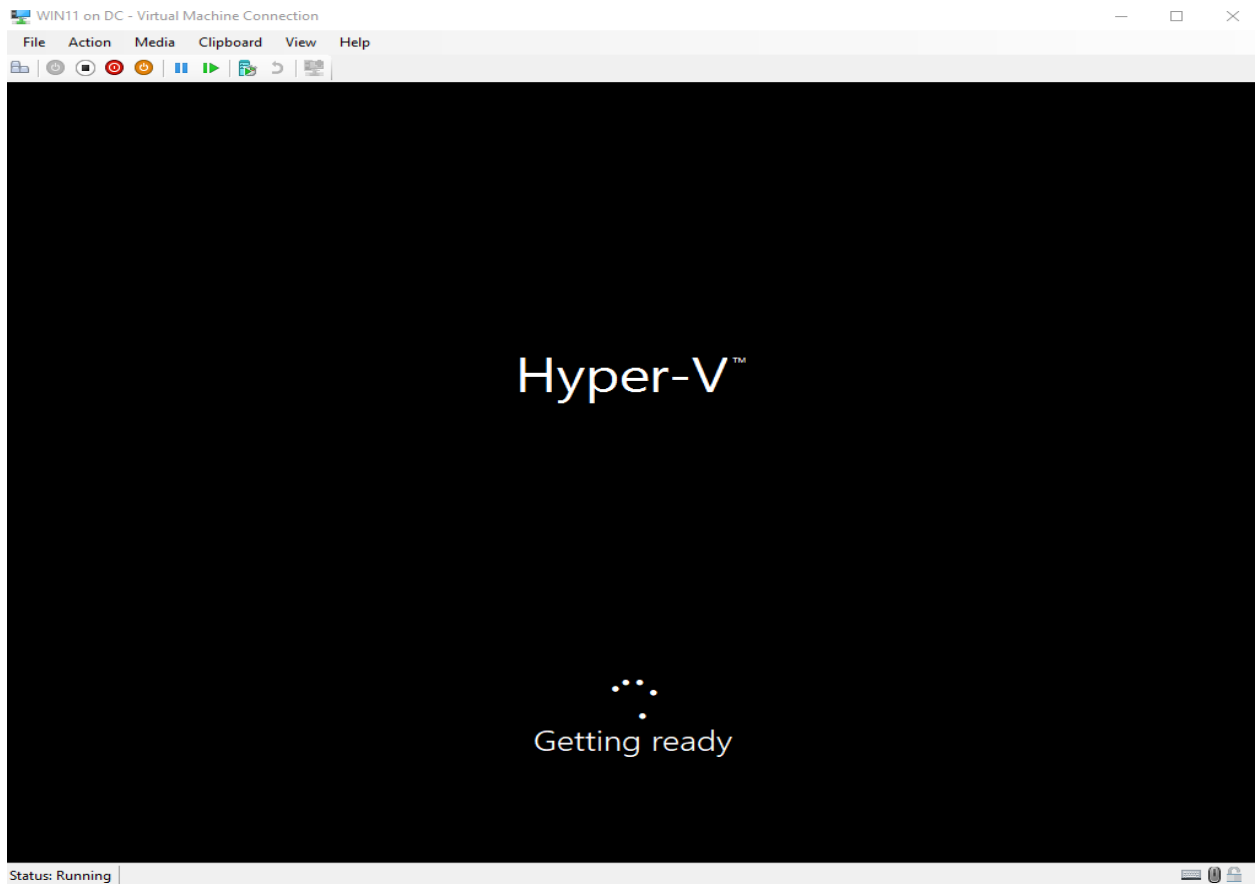


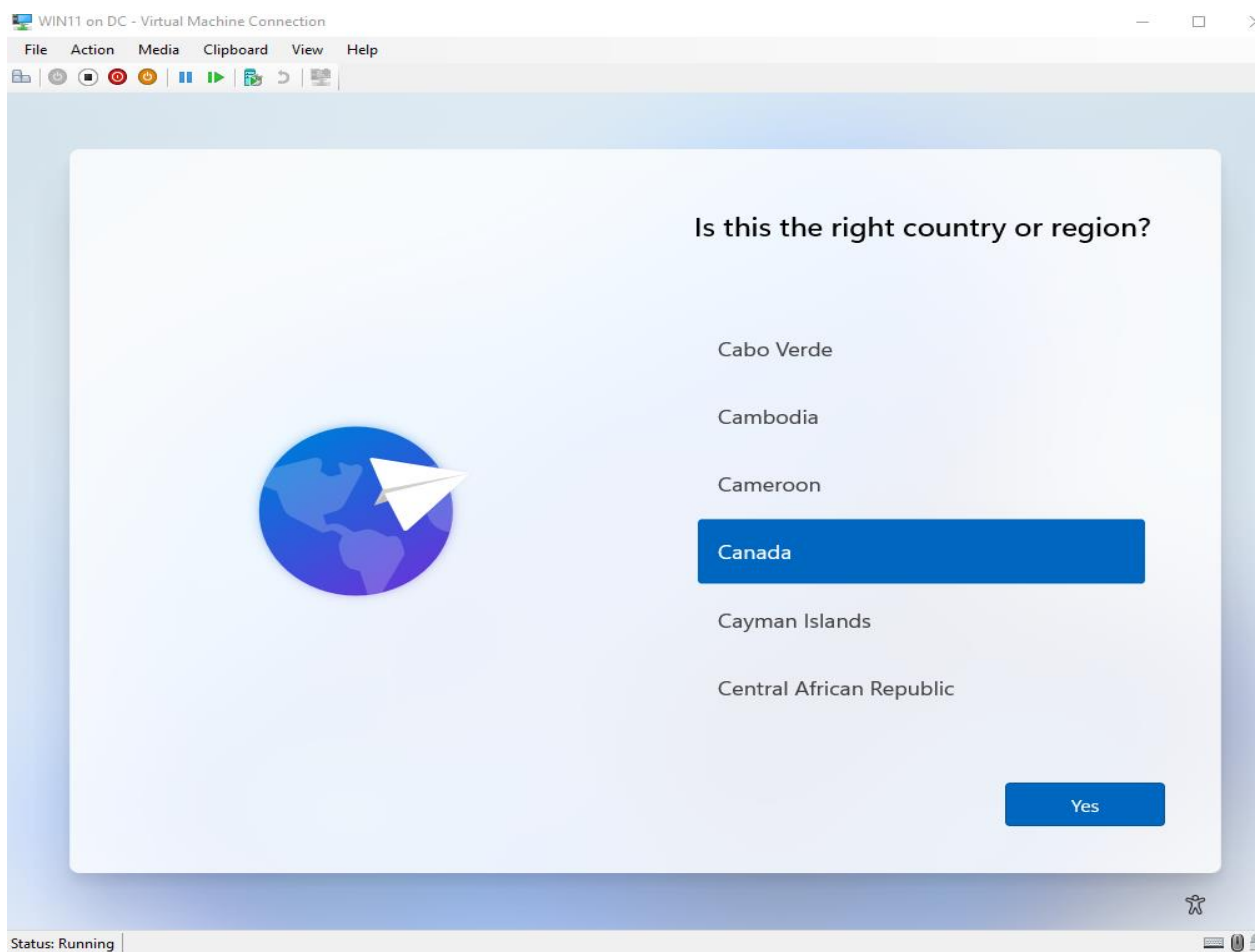
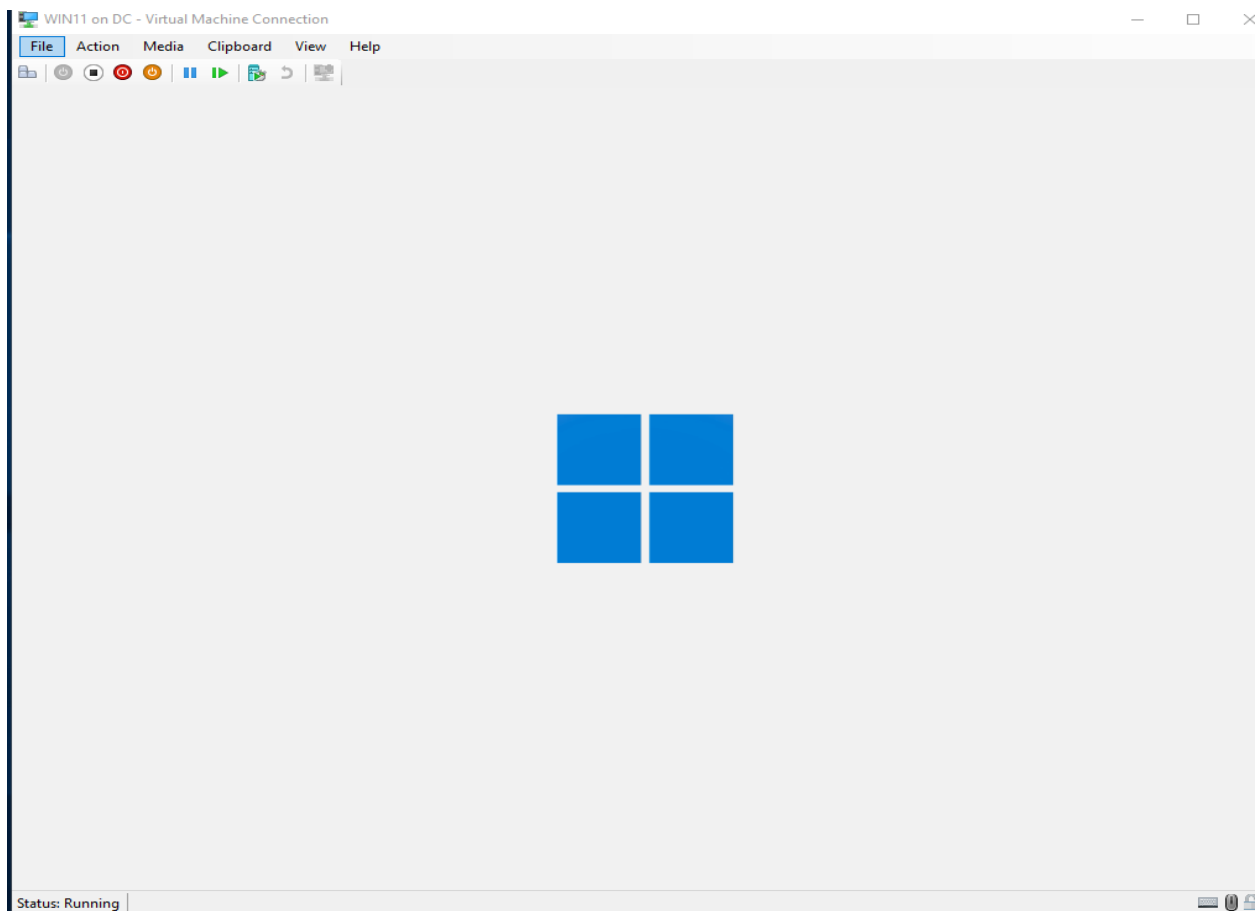


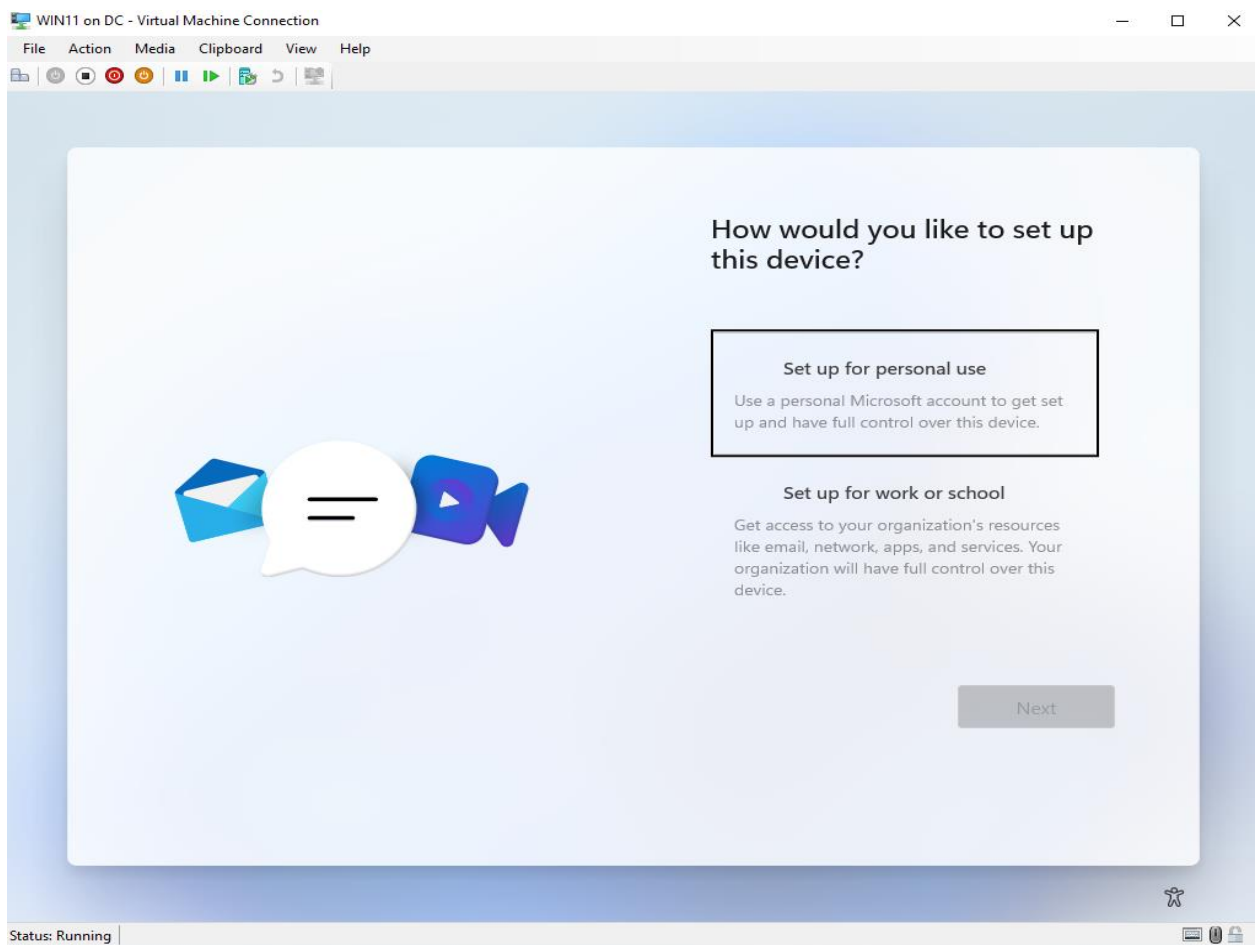
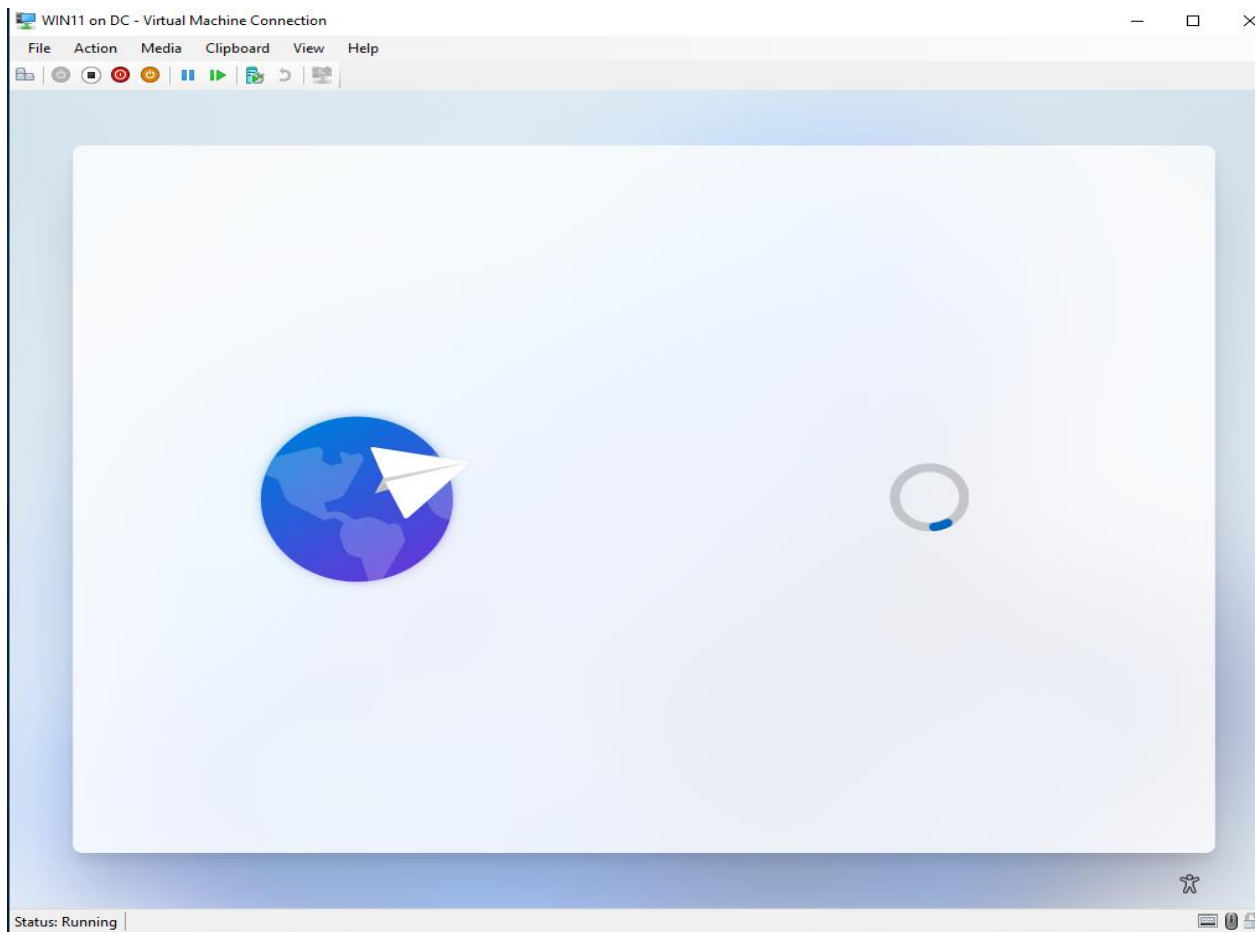


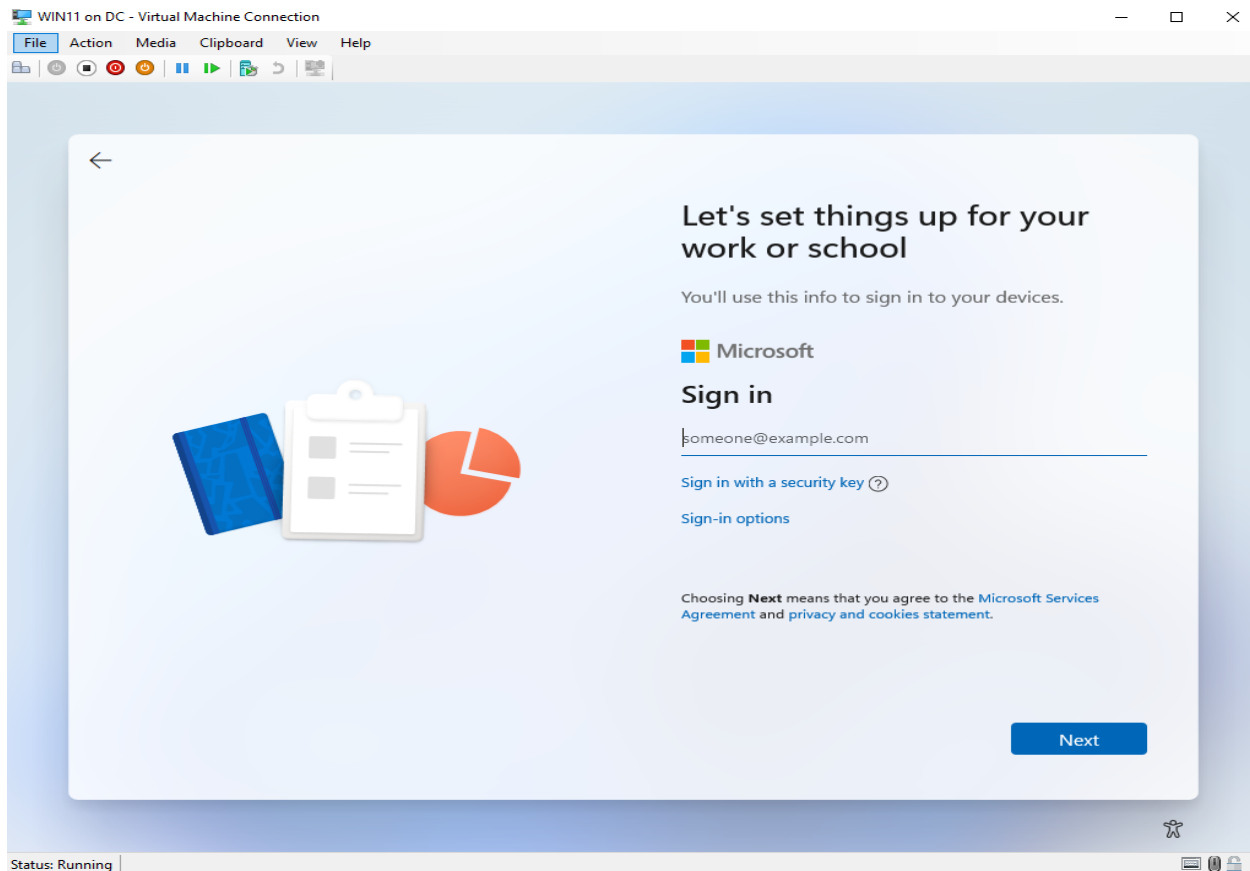




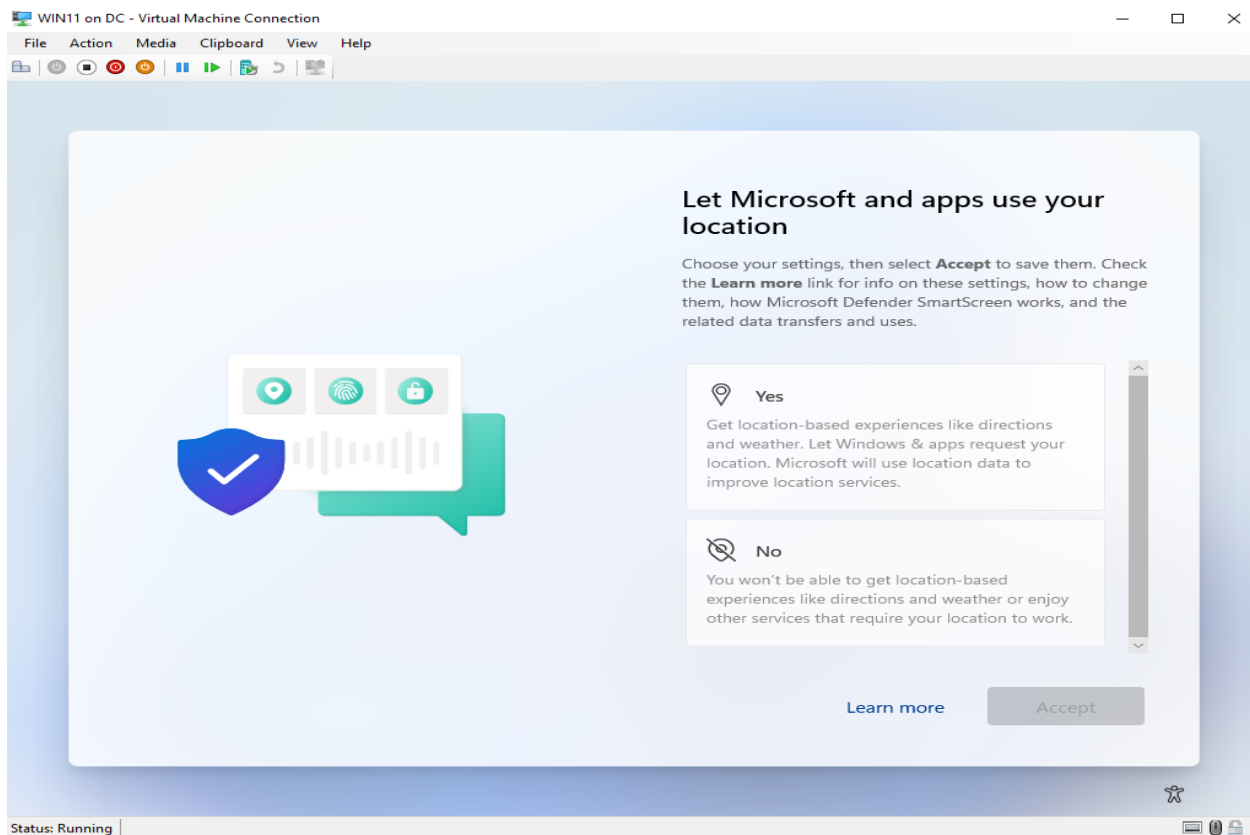


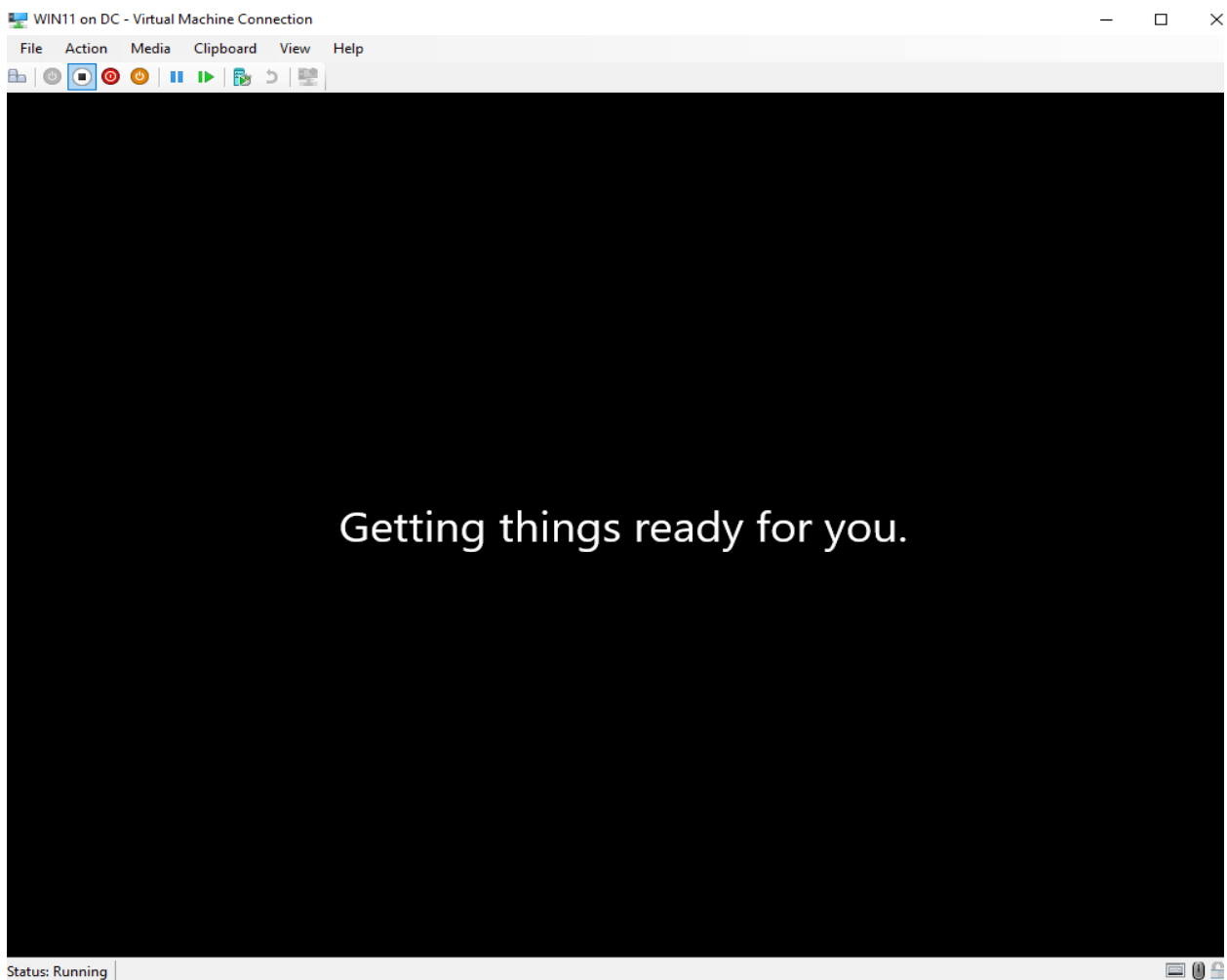
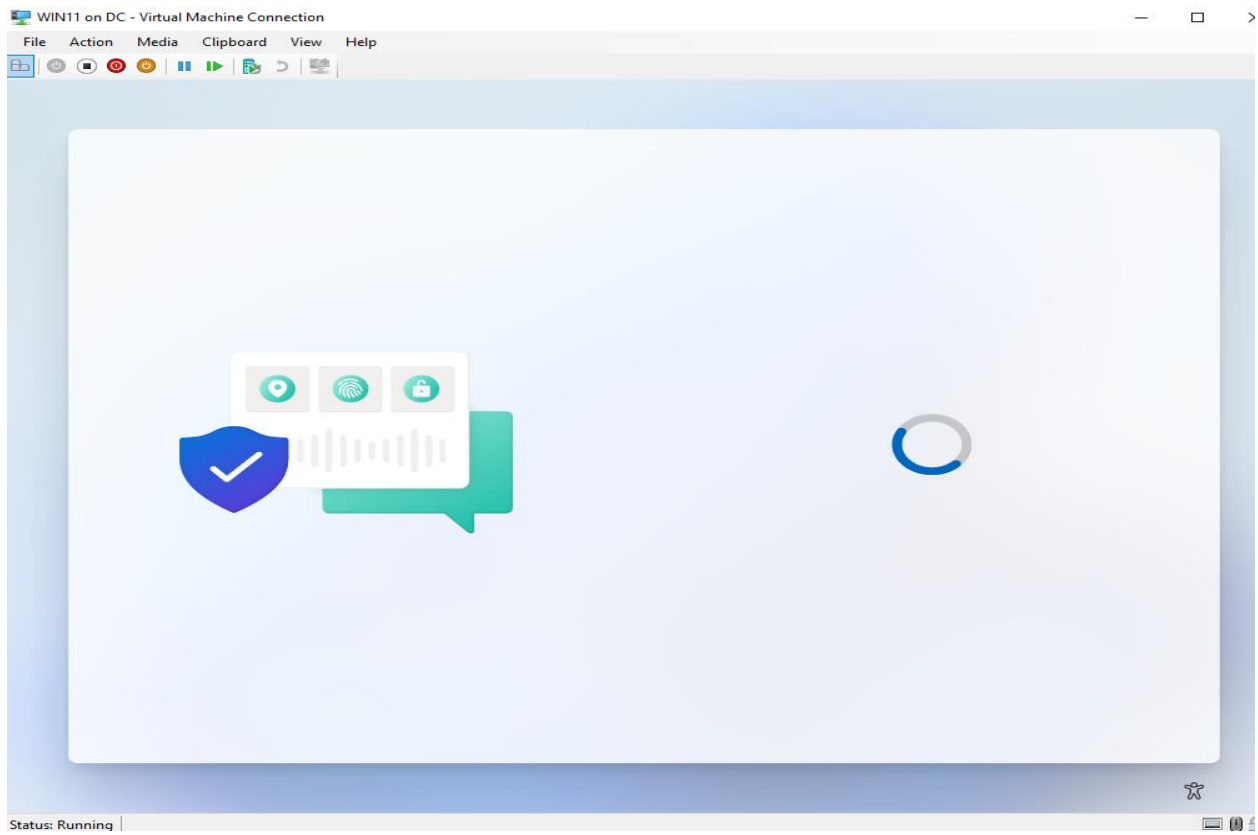


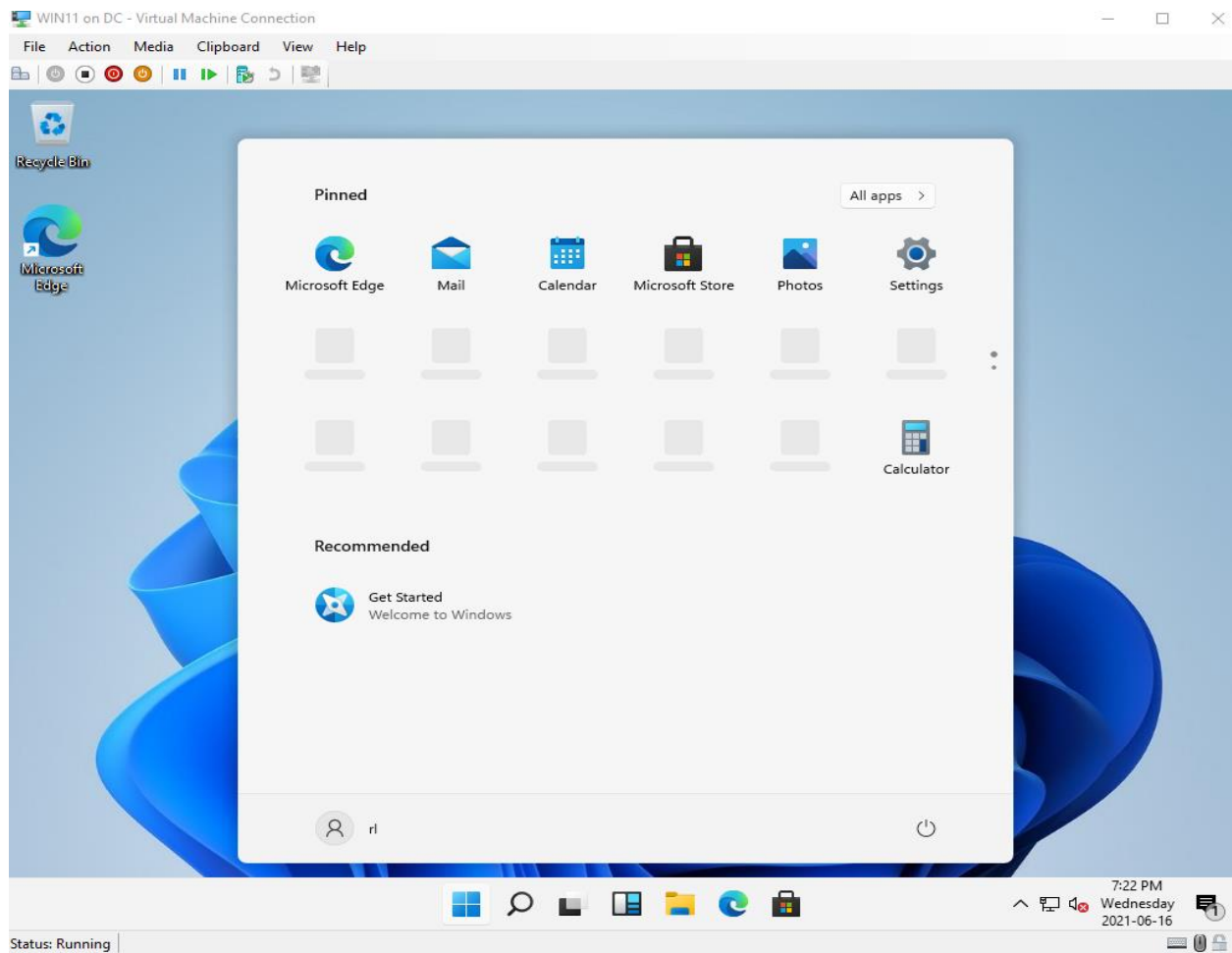
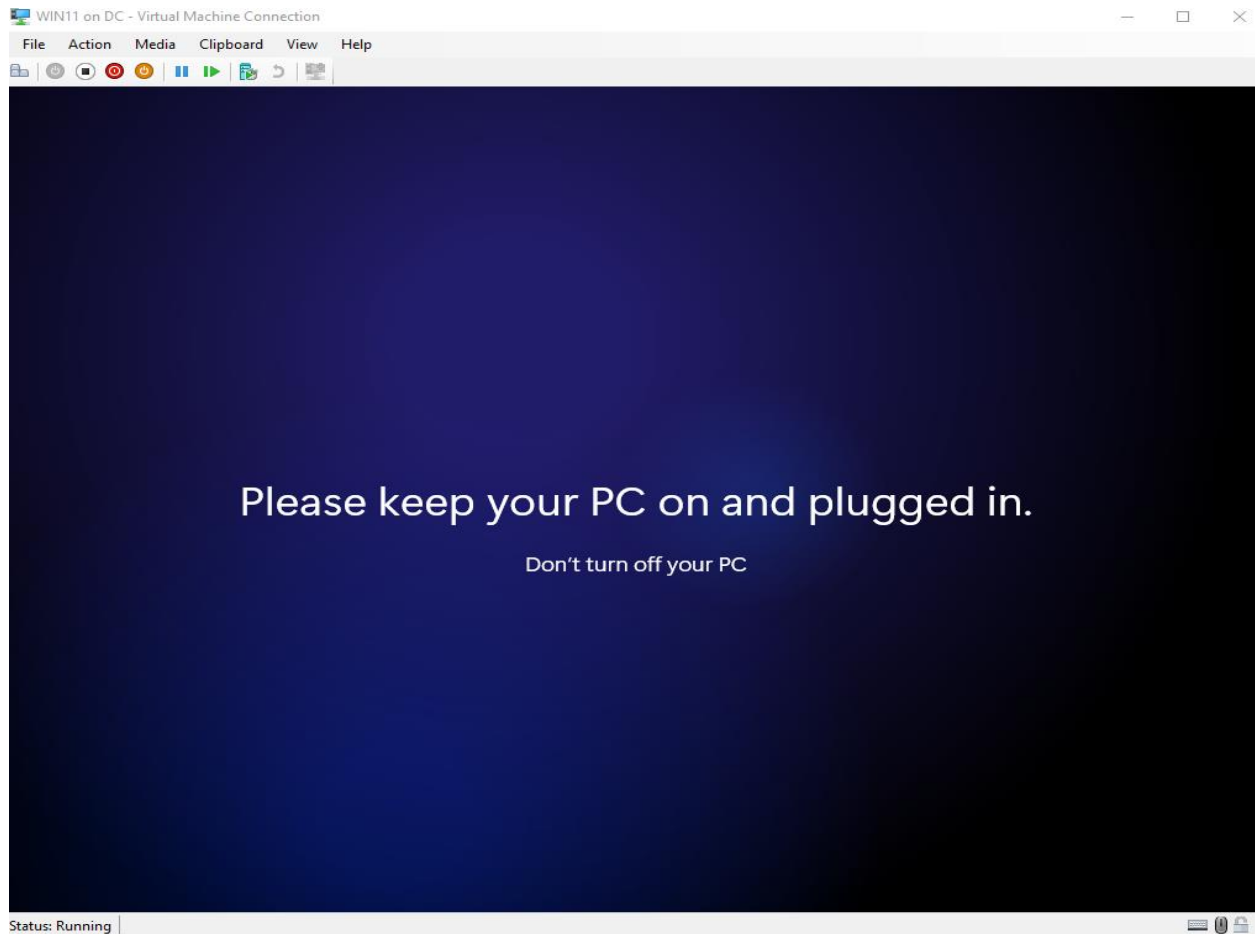


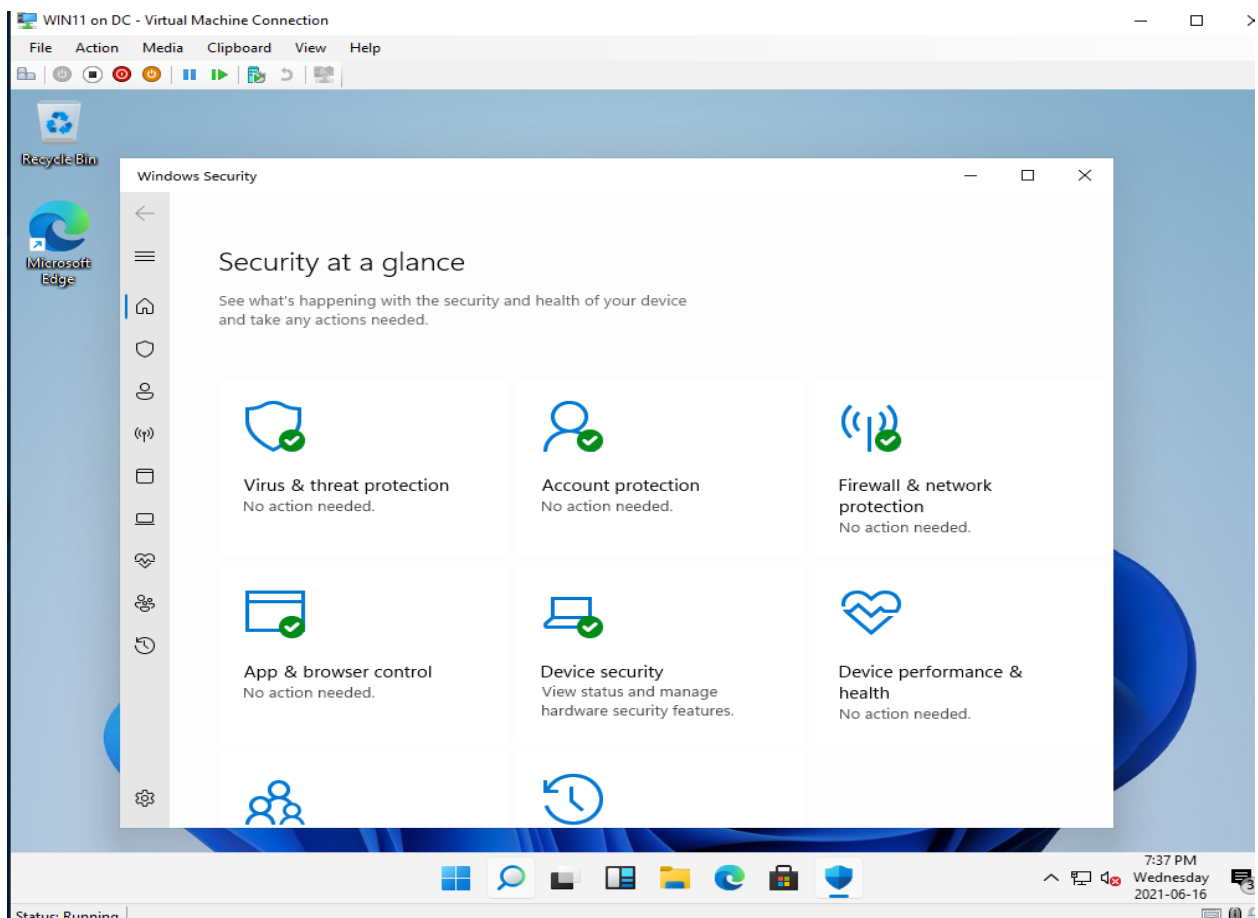
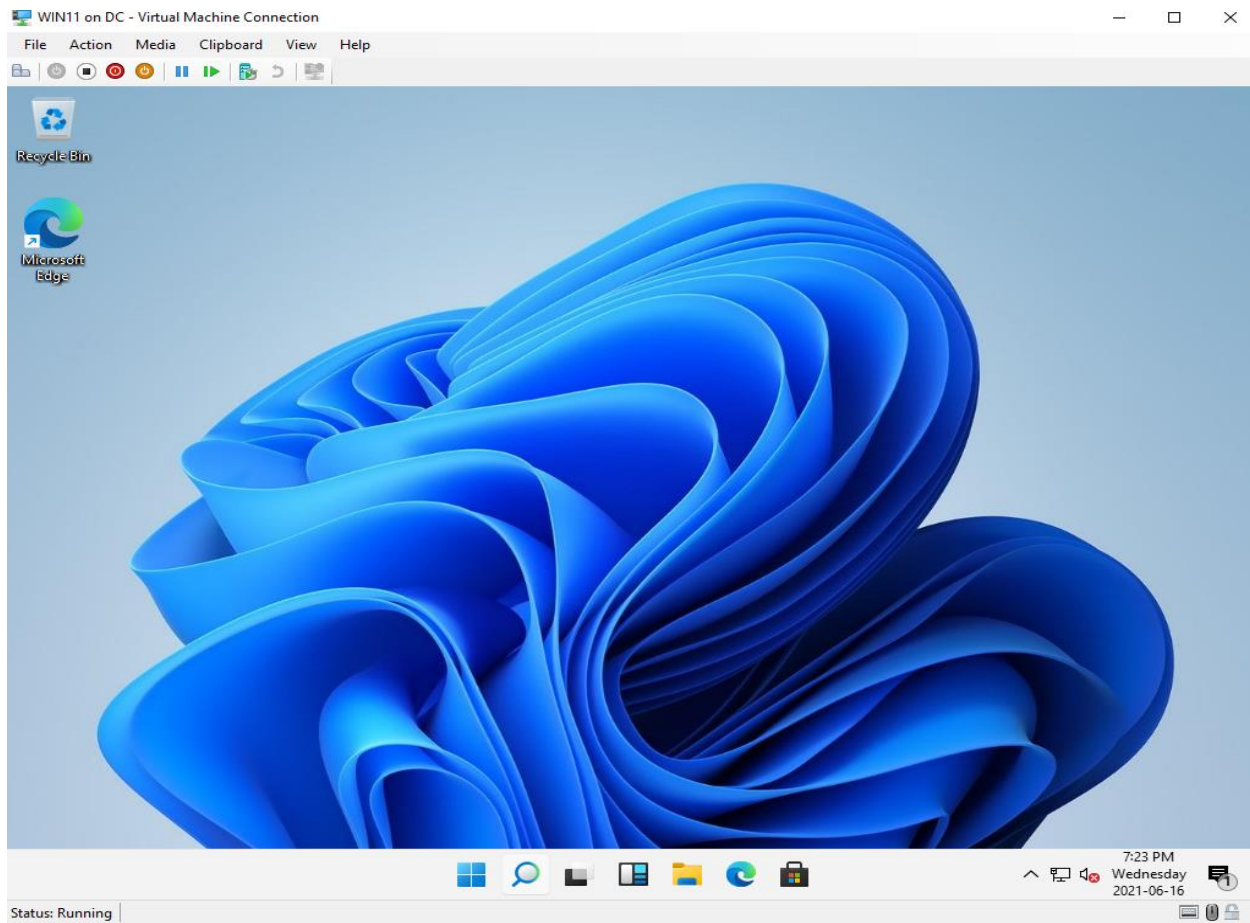


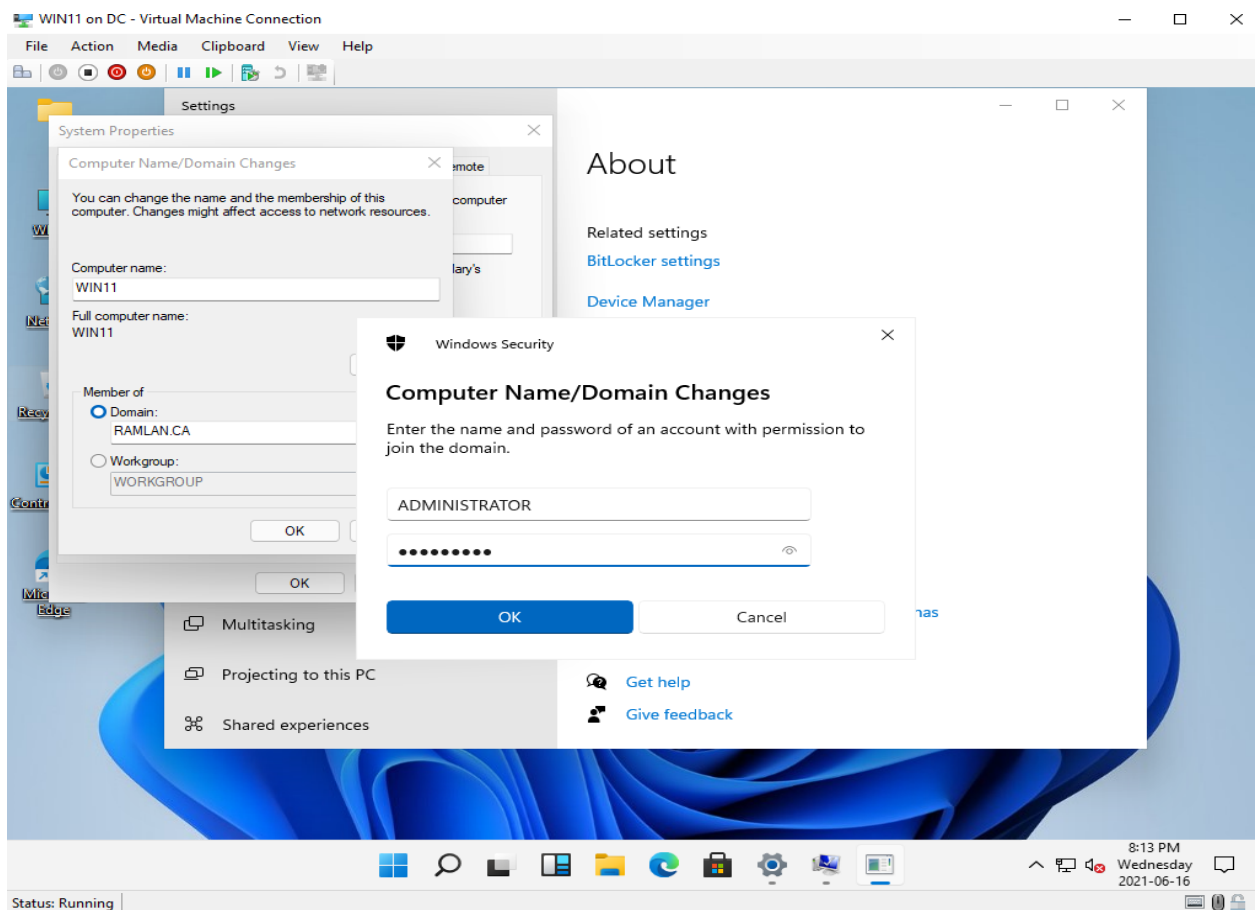
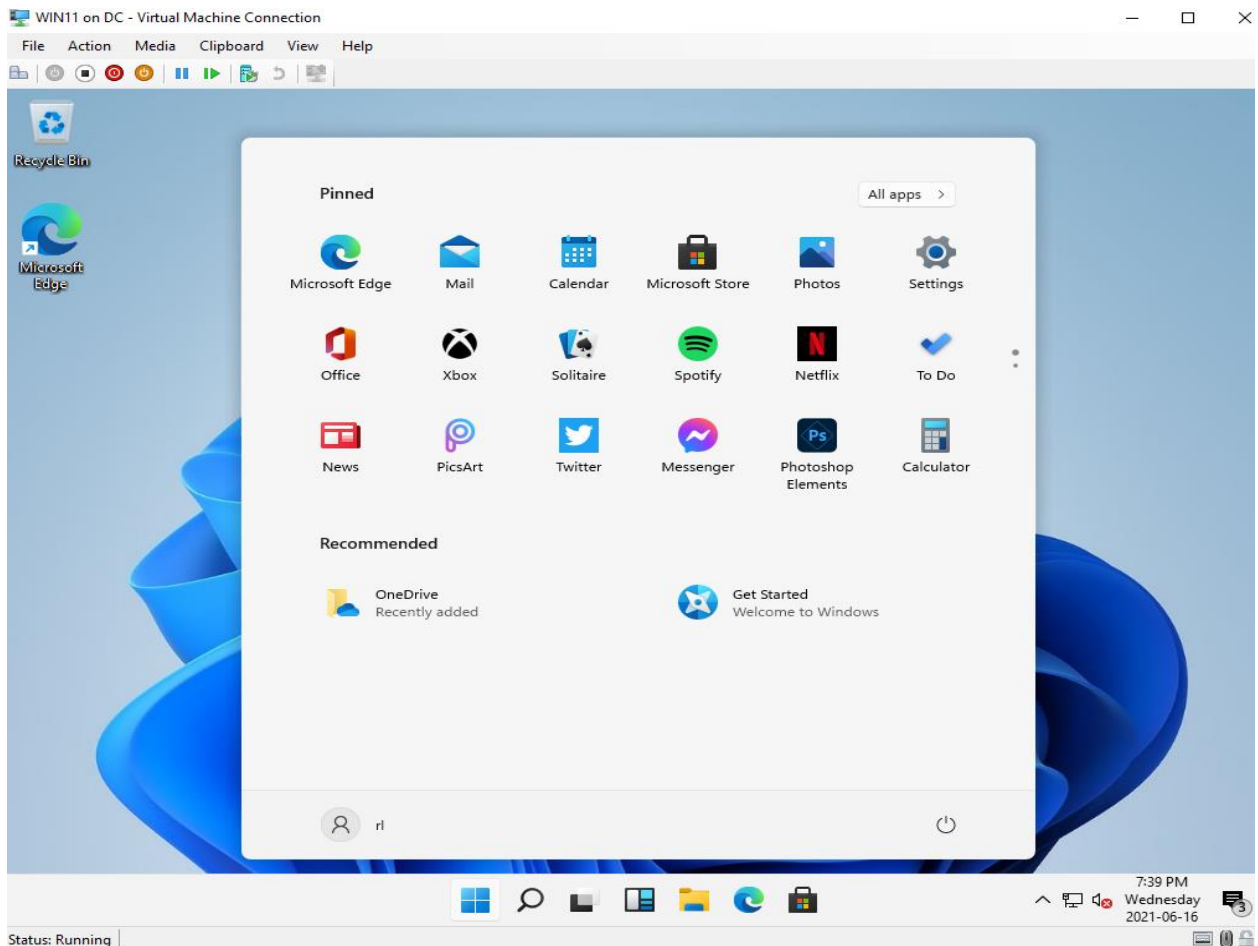
I used domain join option to continue

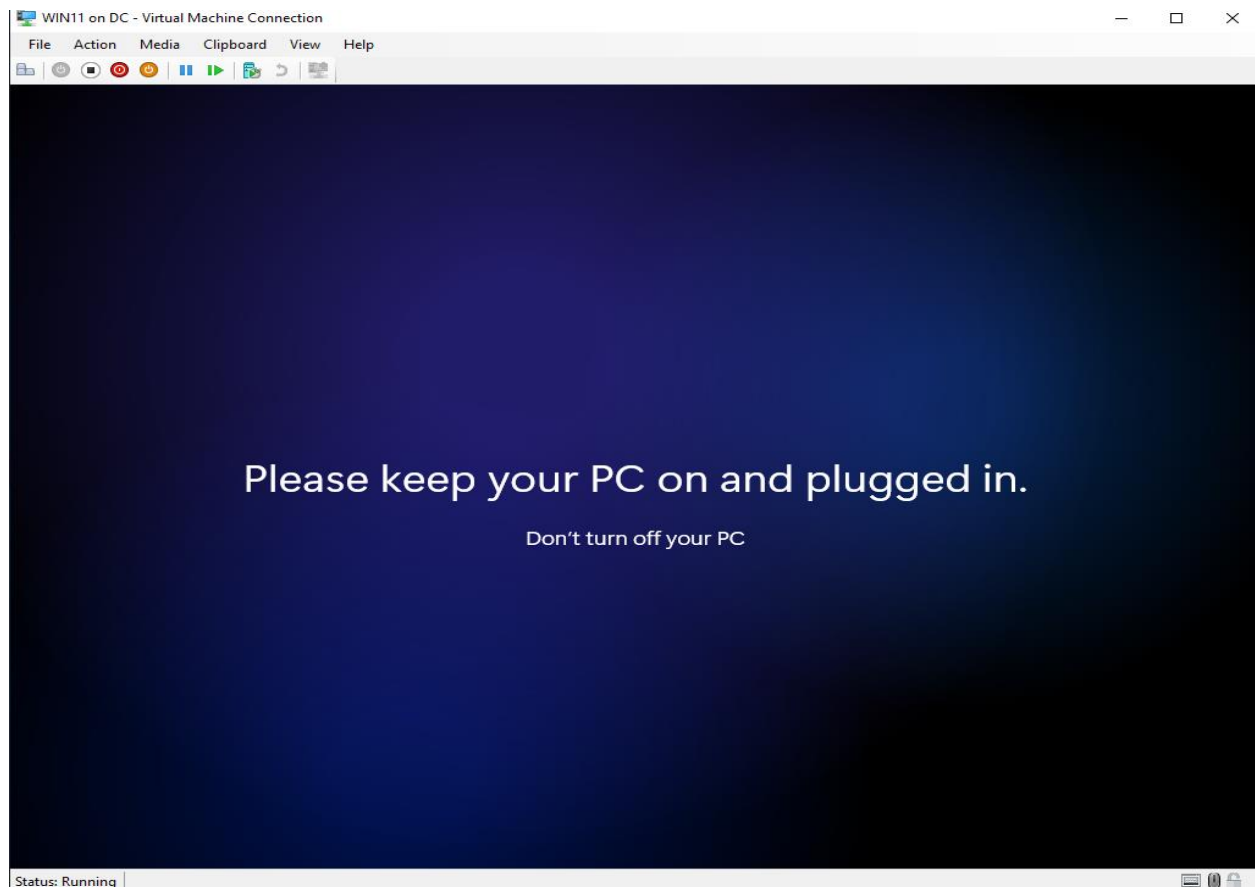
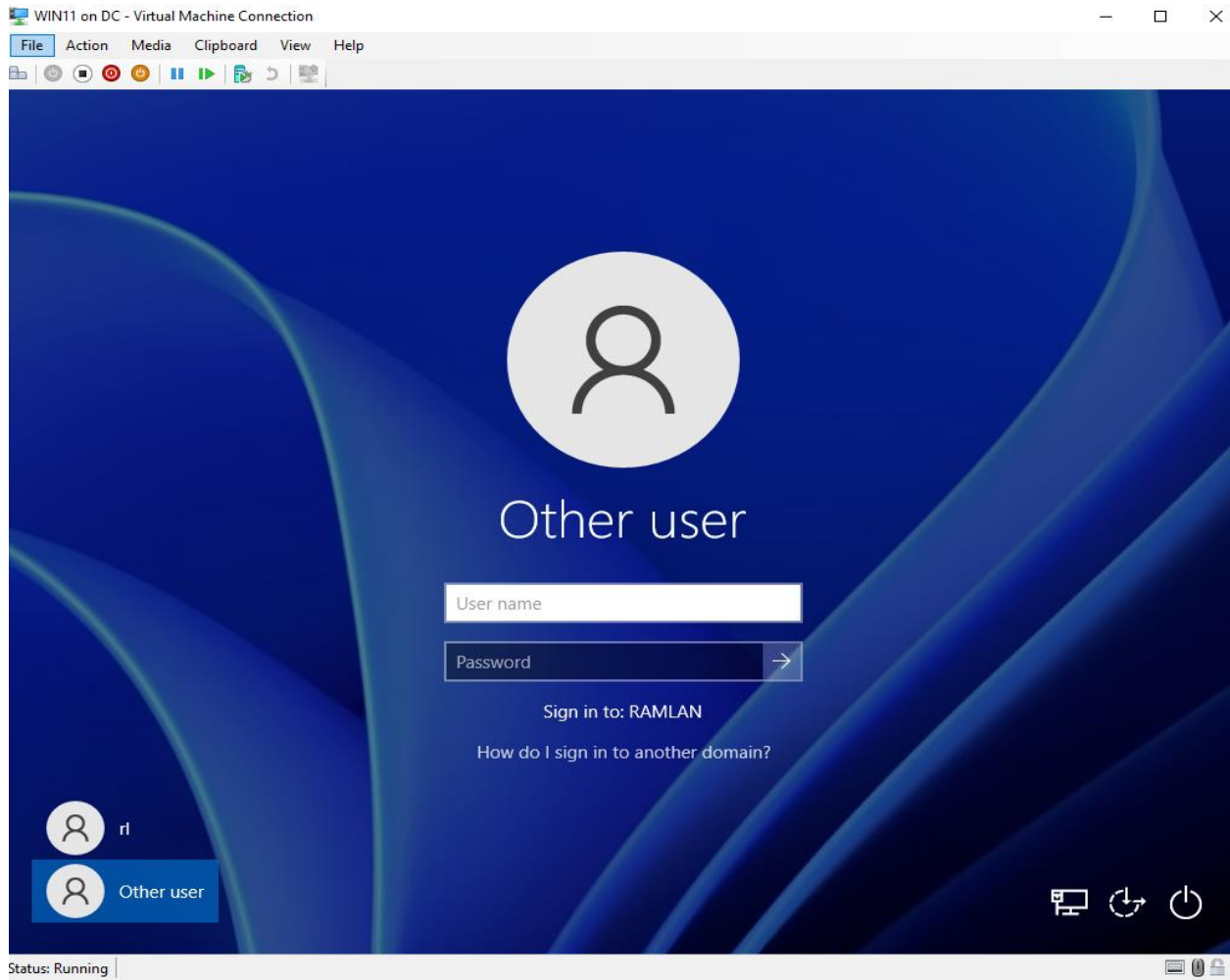


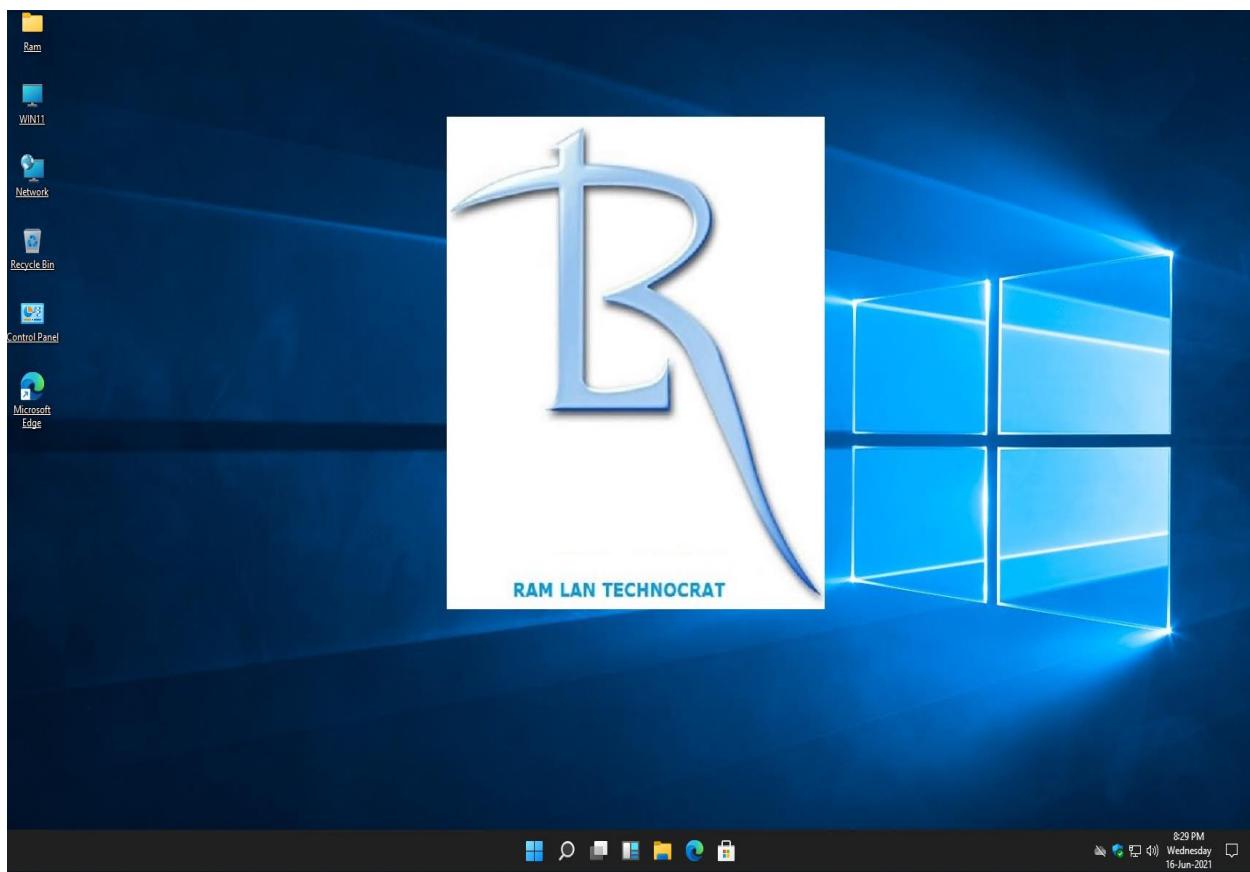
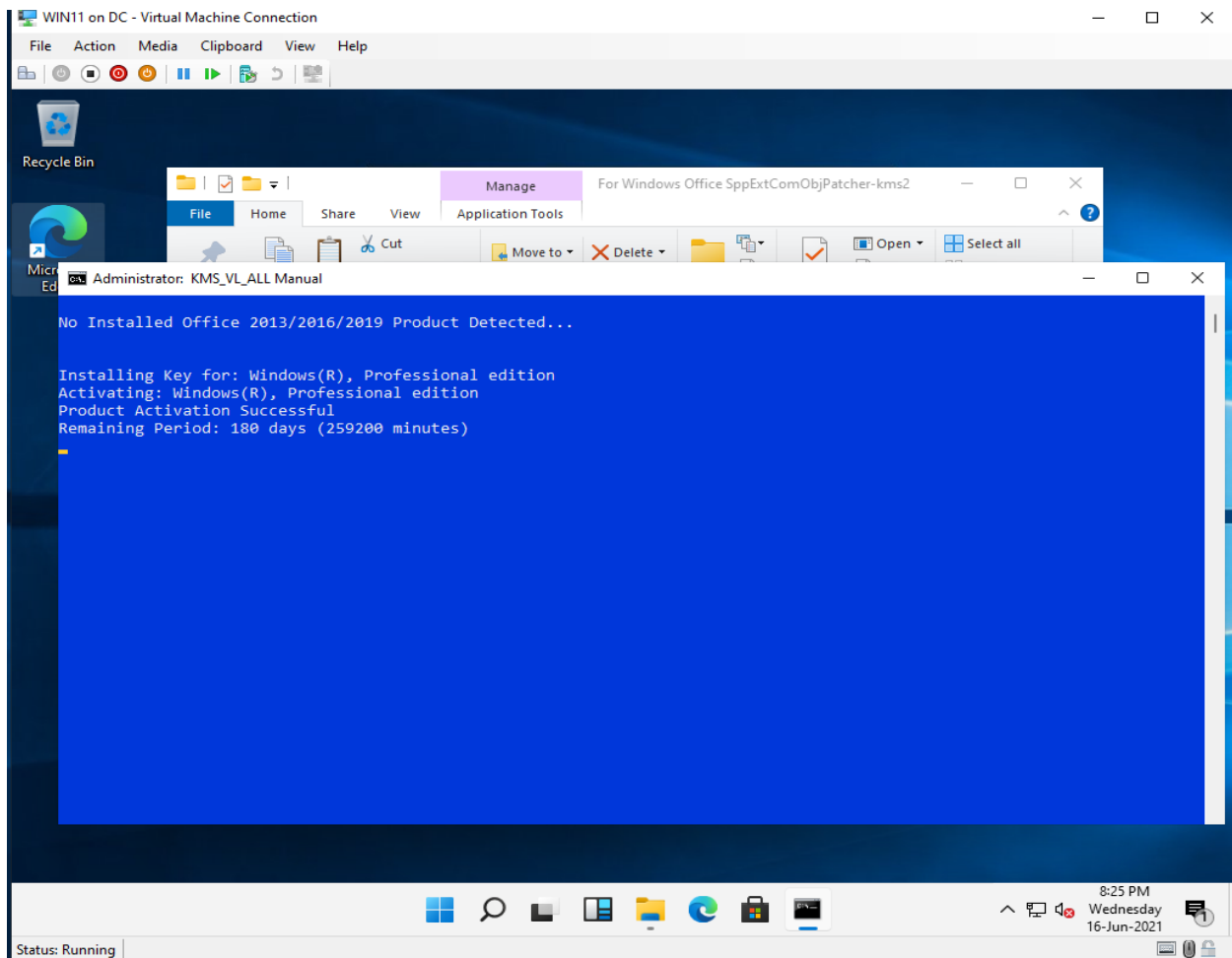


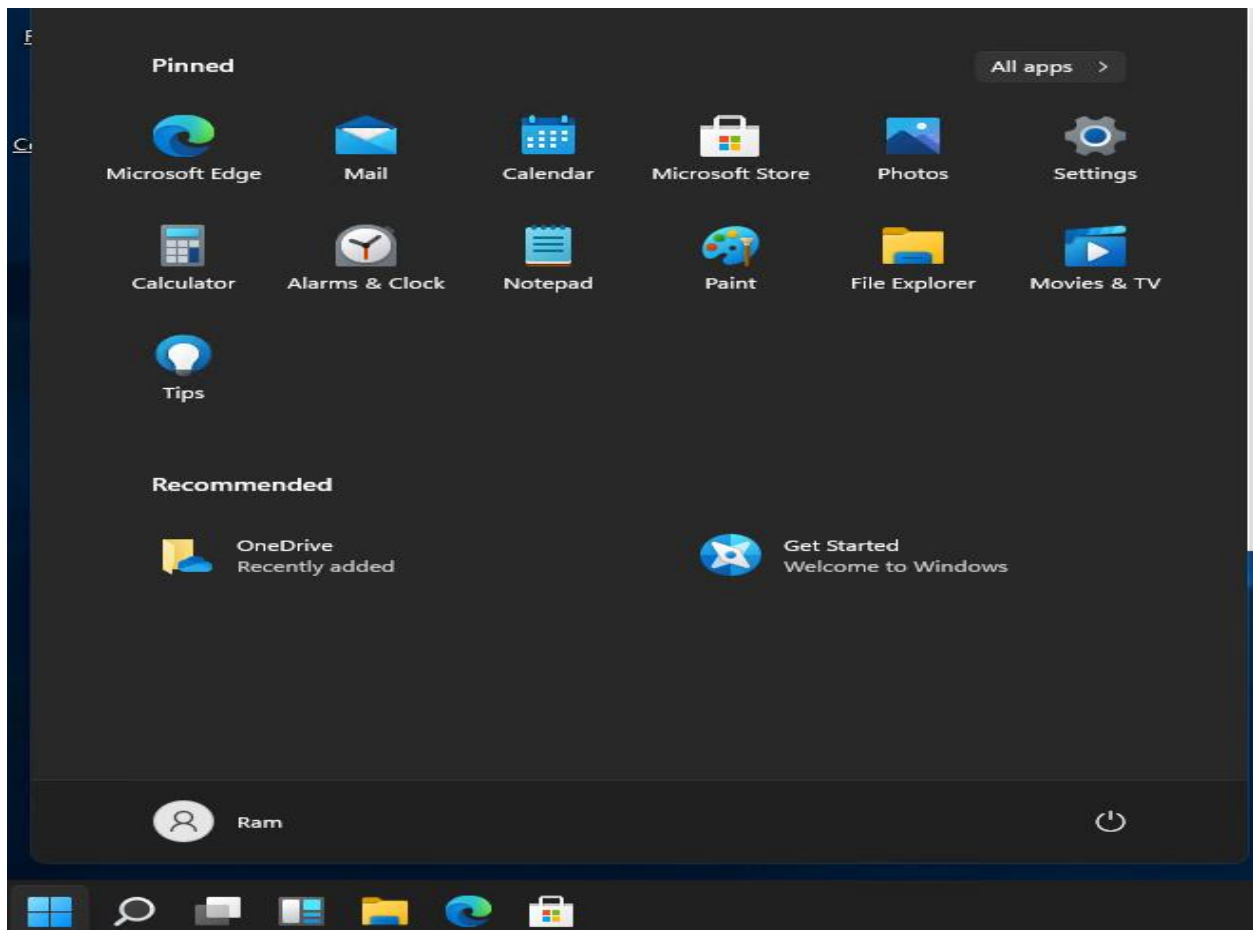
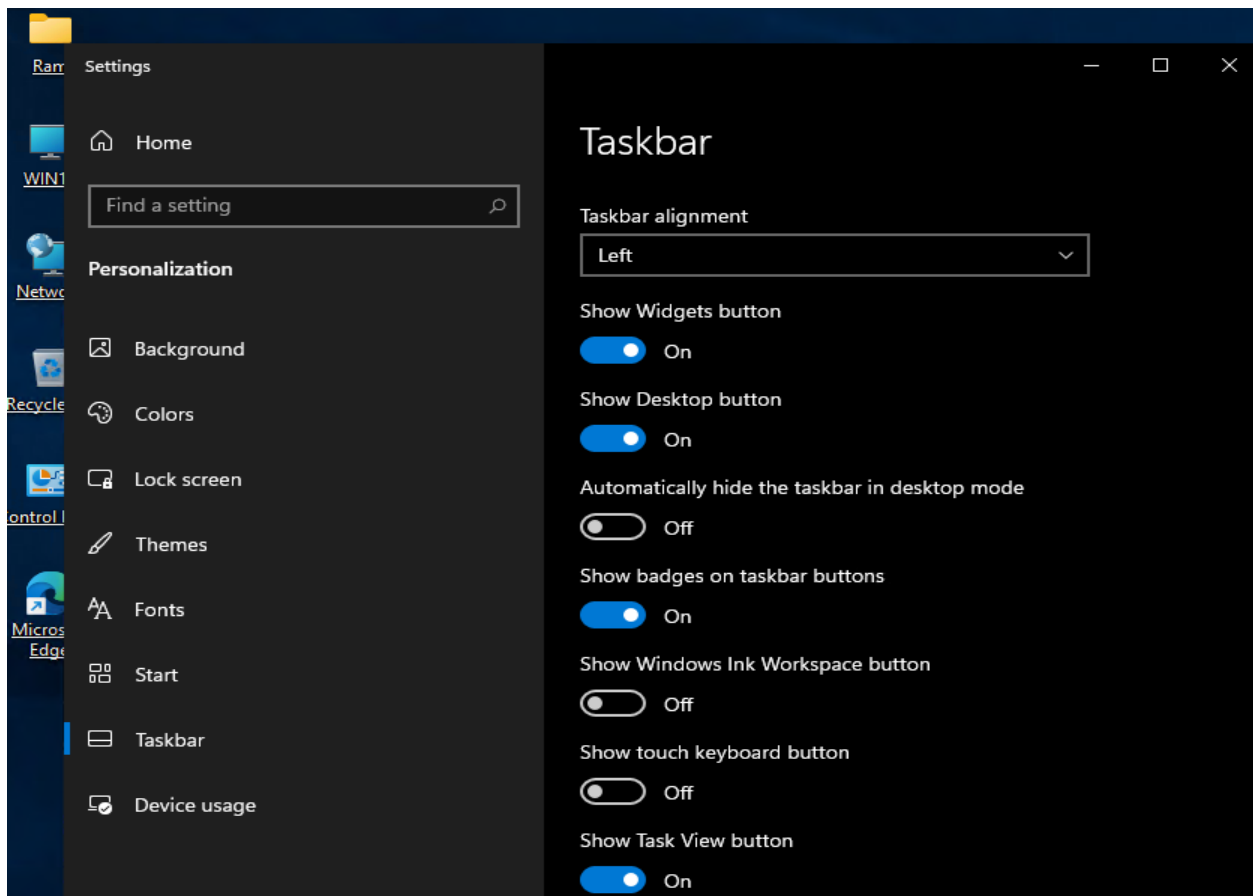


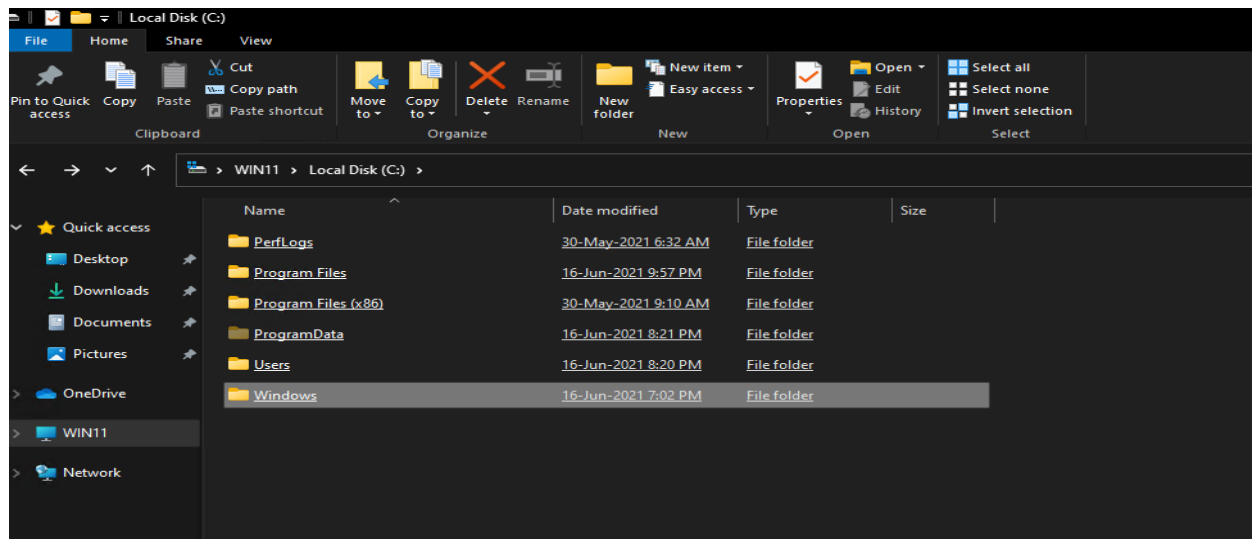












On June 24, Microsoft is not only going to show all the details around Windows 11 – including things we may not yet see in today's leak – but also release dates.

Following precedent and current trends in the software business, Microsoft is highly likely to announce that Windows 11 will be open to Windows Insiders either **starting that very day or soon after that**.

Think of it as the Windows 11 Public Beta.

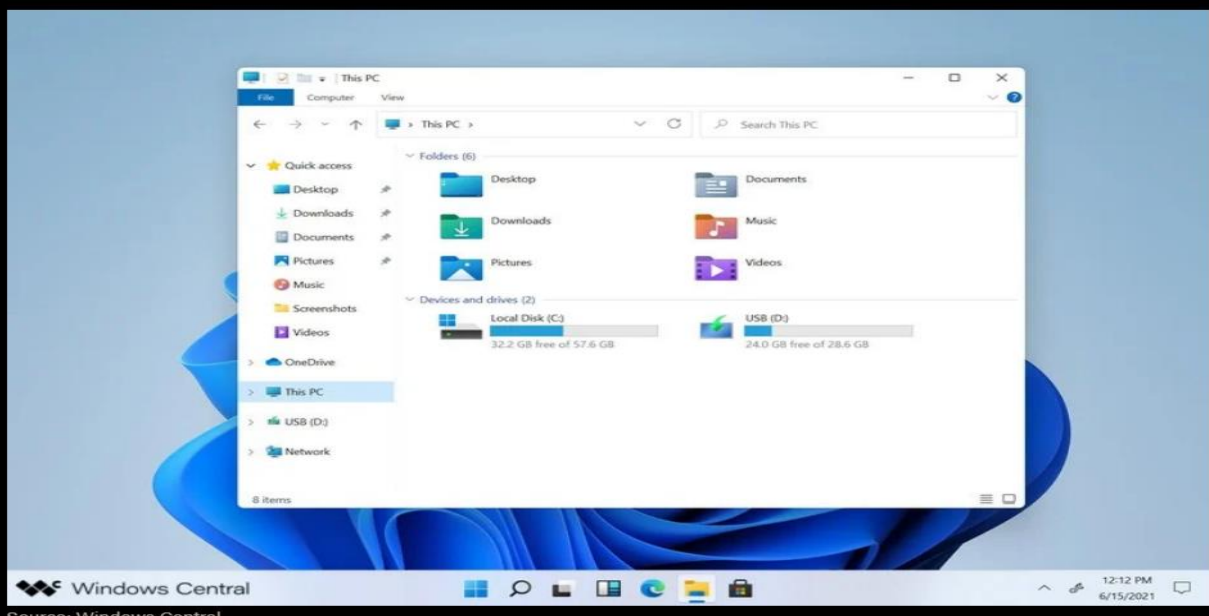
Questions will remain, of course, like *which* Insider Channels. The Insider Dev Channel is the most obvious first choice, with Beta Channel coming later this summer and Release Preview heading into the fall.

It is also not clear *which* PCs will get Windows 11 for early testing or if Microsoft will let any Insider PC join. Historically, it has been open to any Windows PC, which is likely to carry over with Windows 11.

One thing we are confident in stating is, **if you want Windows 11 officially in early beta this summer, you'll likely have your wish.**

FOR EVERYONE ELSE

Windows 11 General Release: October 2021





Windows 11

Microsoft Windows

Version Dev (OS Build 21996.1)

© Microsoft Corporation. All rights reserved.

The Windows 11 Pro operating system and its user interface are protected by trademark and other pending or existing intellectual property rights in the United States and other countries/regions.

This product is licensed under the [Microsoft Software License Terms](#) to:

rl

OK

<https://drive.google.com/drive/folders/19949229qsPMpoXfA4aw2HRDGHljKrYYH?usp=sharing>

<https://drive.google.com/file/d/1xVu5u-CRByOnHNP4INFLykHKJ0Wx2Agx/view?usp=sharing>

https://drive.google.com/drive/folders/1k6sXVKVGxe7IDDGGAxq_Pjz7kUQM9rtb?usp=sharing

Make way for Windows 11? Windows 10 end-of-life is October 2025

What does a new version of Windows mean for me?

For now, it's unclear what a new "Windows 11" means for end-users—there are no guarantees that existing Windows 10 licenses will allow the use of Windows 11, let alone an in-place upgrade. We also have no concrete idea about when new releases of Windows 10 will cease, when the first Windows 11 will be available, or what costs will be.

We do have an educated guess or two, though. Microsoft's generous upgrade policies from Windows 7 to Windows 10 (you can still upgrade for free today!) strongly imply a similar policy for 11, which Microsoft will presumably be keen to get users on. We also don't expect under-the-hood changes as sweeping as the ones that took place between 7 and 10. In all likelihood, in-place upgrades will be available.

Also, the consumer support cycle for Windows 10 is *short*. For example, Windows 10 21H1—the most current build—is only supported through December 2022. That's a roughly 18-month lifecycle, and there are no extended support policies for consumer Windows anymore. When it leaves support, you're expected to upgrade to the next version if you want to continue getting support and bug fixes.

We may or may not see a Windows 10 21H2 or even a Windows 10 22H1. But we don't expect to get a new Windows 10 build past 2023 at the latest, since that would imply the need to support 10 past its October 2025 retirement date.

This concludes Windows 11 install. I will explore more during the weekend.

Thanks

Ram Lan

16th Jun 2021