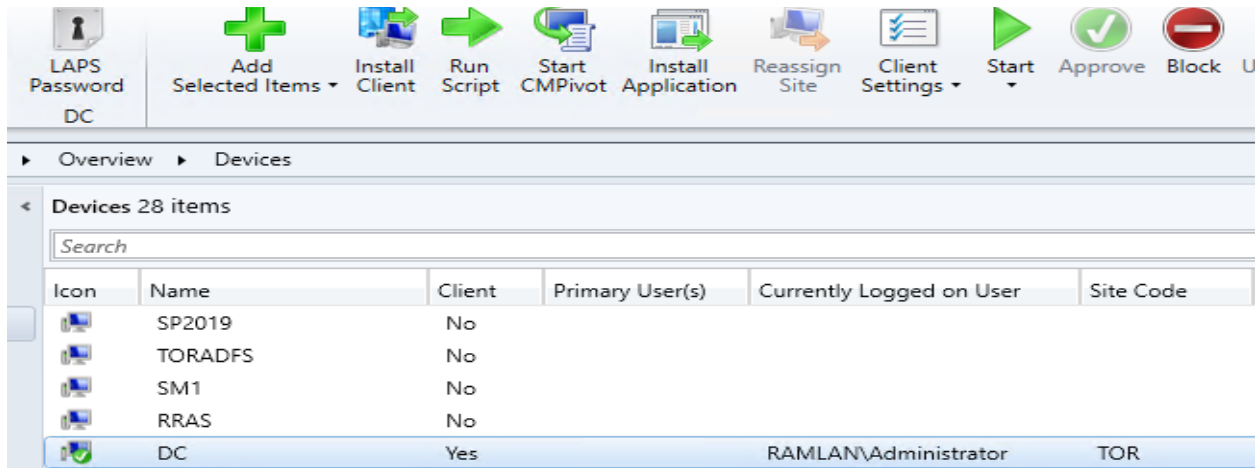
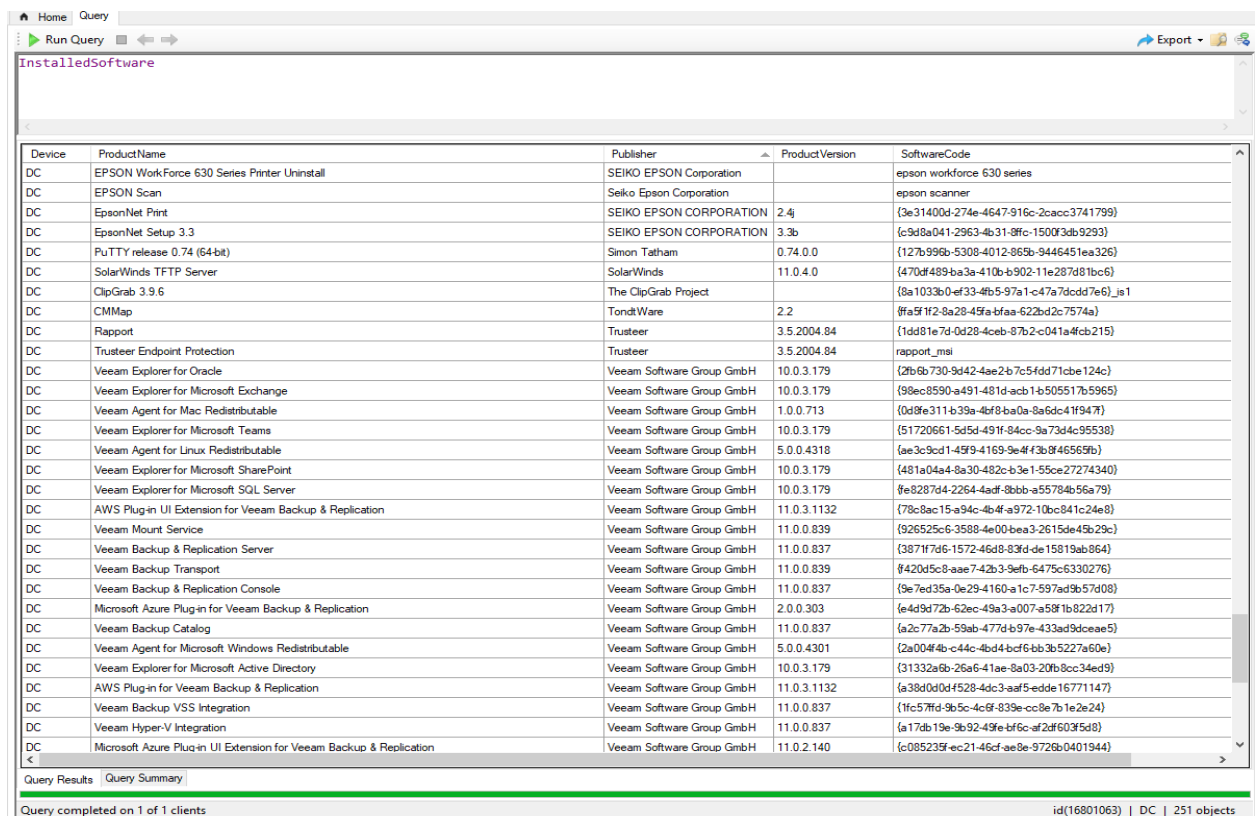
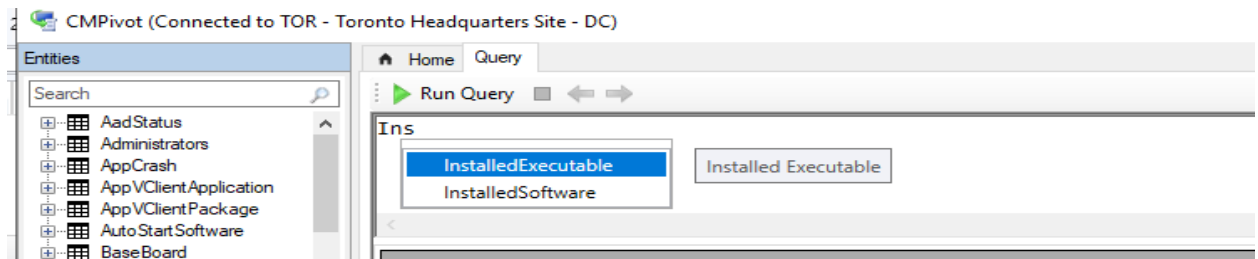


Find installed software on client machine using CMPivot

In this post, I will run a short script to get list of applications installed on a client machine. For this example, I will use client DC.

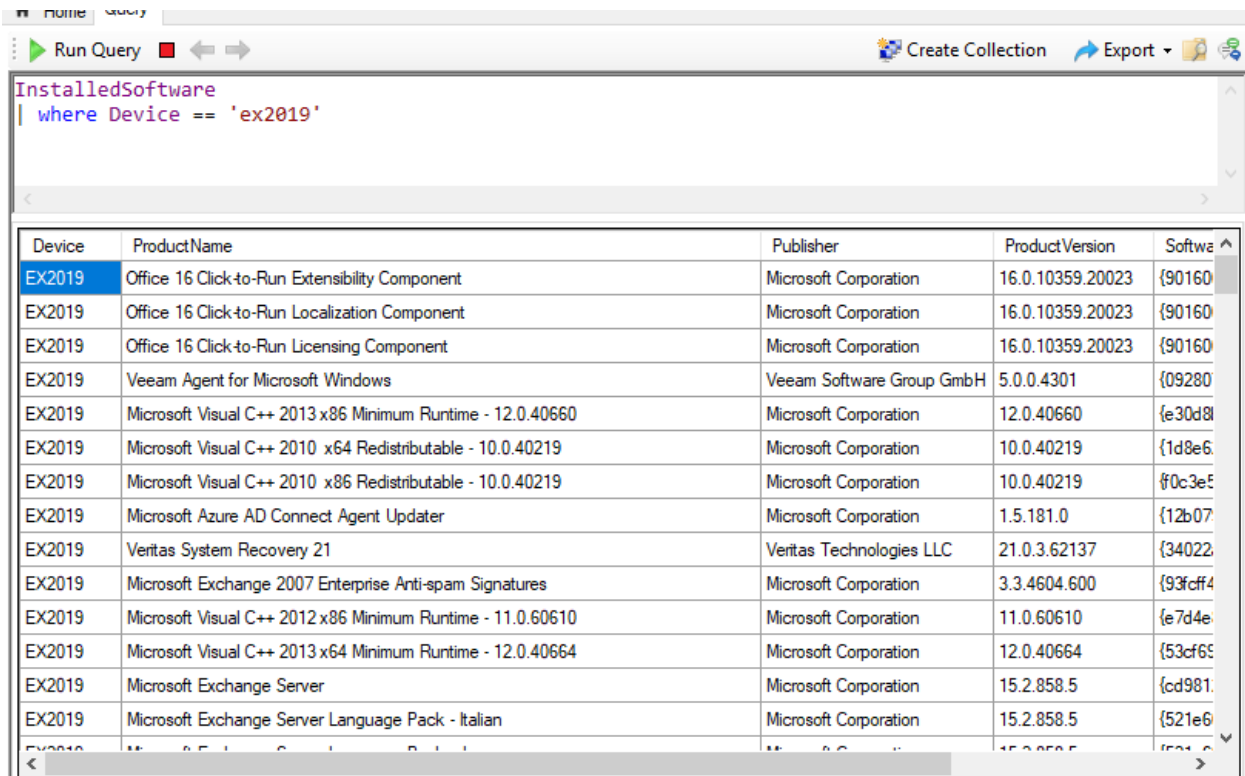


Select InstalledSoftware and click Run Query – After some time you will see the result.



If you want to run the query for a **specific device** – then use this command

InstalledSoftware | Where Device == 'device name'



The screenshot shows a query tool interface. At the top, there is a 'Run Query' button and navigation arrows. Below the query input field, the query is: `InstalledSoftware | where Device == 'ex2019'`. The results are displayed in a table with the following columns: Device, ProductName, Publisher, ProductVersion, and SoftwareID. The first row is highlighted in blue.

Device	ProductName	Publisher	ProductVersion	SoftwareID
EX2019	Office 16 Click-to-Run Extensibility Component	Microsoft Corporation	16.0.10359.20023	{90160}
EX2019	Office 16 Click-to-Run Localization Component	Microsoft Corporation	16.0.10359.20023	{90160}
EX2019	Office 16 Click-to-Run Licensing Component	Microsoft Corporation	16.0.10359.20023	{90160}
EX2019	Veeam Agent for Microsoft Windows	Veeam Software Group GmbH	5.0.0.4301	{09280}
EX2019	Microsoft Visual C++ 2013 x86 Minimum Runtime - 12.0.40660	Microsoft Corporation	12.0.40660	{e30d8}
EX2019	Microsoft Visual C++ 2010 x64 Redistributable - 10.0.40219	Microsoft Corporation	10.0.40219	{1d8e6}
EX2019	Microsoft Visual C++ 2010 x86 Redistributable - 10.0.40219	Microsoft Corporation	10.0.40219	{f0c3e5}
EX2019	Microsoft Azure AD Connect Agent Updater	Microsoft Corporation	1.5.181.0	{12b07}
EX2019	Veritas System Recovery 21	Veritas Technologies LLC	21.0.3.62137	{34022}
EX2019	Microsoft Exchange 2007 Enterprise Anti-spam Signatures	Microsoft Corporation	3.3.4604.600	{93fcf4}
EX2019	Microsoft Visual C++ 2012 x86 Minimum Runtime - 11.0.60610	Microsoft Corporation	11.0.60610	{e7d4e}
EX2019	Microsoft Visual C++ 2013 x64 Minimum Runtime - 12.0.40664	Microsoft Corporation	12.0.40664	{53cf65}
EX2019	Microsoft Exchange Server	Microsoft Corporation	15.2.858.5	{cd981}
EX2019	Microsoft Exchange Server Language Pack - Italian	Microsoft Corporation	15.2.858.5	{521e6}

If you want to run a query for a **specific product** against a specific device

InstalledSoftware | where Device == 'DC' and ProductName == 'Visual Studio Professional 2019'

If you want to run a query for a **specific publisher** against a specific device

InstalledSoftware | where Device == 'DC' and Publisher contains 'Microsoft'

In addition to the above methods there are several alterations that you do in the query and find the installed software information.

Thanks

Ram Lan

24th May 2021