

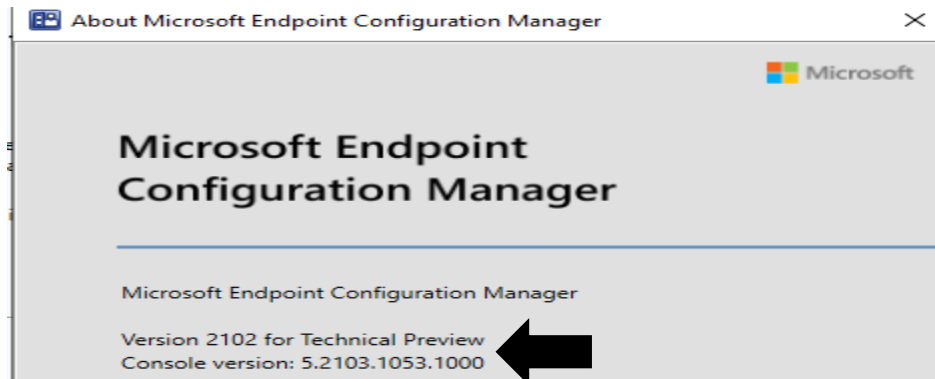
# Installing Technical Preview 2103

In this post, I will show you how to install / upgrade Technical Preview and explore new features. I am currently running TP2102. Will complete the upgrade from the console.

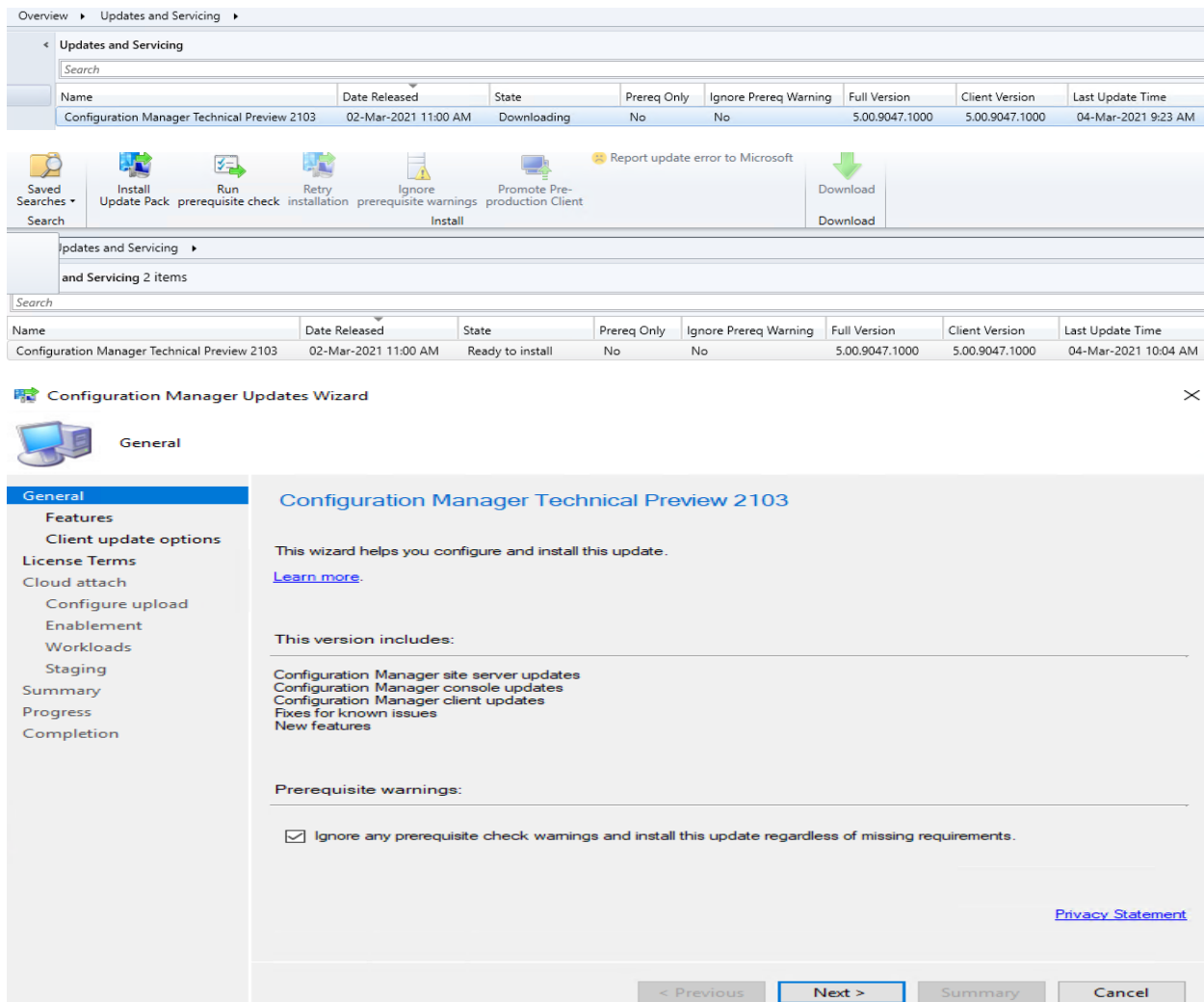
Below are the links to TP2103 documentation.

<https://docs.microsoft.com/en-us/mem/configmgr/core/get-started/2021/technical-preview-2103>

<https://techcommunity.microsoft.com/t5/configuration-manager-blog/download-baselines-from-community-hub-in-configuration-manager/ba-p/2183026#.YEBtS0phF9E.twitter>



Just clicked check for updates and it is ready to download / install TP2103





## Features

## General

## Features

## Client update options

## License Terms

## Cloud attach

## Configure upload

## Enablement

## Workloads

## Staging

## Summary

## Progress

## Completion

## Features included in update pack

This update pack includes the following features. Select the features you want to enable now. Features you don't enable now can be enabled later from the Updates and Servicing node of the Configuration Manager console.

- ☒ Device Health Attestation assessment for compliance policies for conditional access
- ☒ Windows Defender Exploit Guard policy
- ☒ Remove Central Administration Site
- ☒ Cloud management gateway with Azure VM scale set
- ☒ Microsoft Operations Management Suite (OMS) Connector
- ☒ Task Sequence Debugger
- ☒ Community hub
- ☒ Windows Hello for Business
- ☒ Task Sequence as an app model deployment type install method
- ☒ Application Groups

Description:

&lt; Previous

Next &gt;

Summary

Cancel



## Client update options

## General

## Features

## Client update options

## License Terms

## Cloud attach

## Configure upload

## Enablement

## Workloads

## Staging

## Summary

## Progress

## Completion

## Client update settings

This update includes an update for the Configuration Manager client. You can upgrade your clients immediately, or validate this client in a pre-production collection before you upgrade all your Configuration Manager clients.

☒ Upgrade without validating

Overwrites your current Configuration Manager client package with the new client update. All new client installations and client upgrades use this new client update.

☐ Validate in pre-production collection

Validate the client update on members of the pre-production collection while you keep your production client package intact. Later, you can overwrite the production package using Client Update Options in the Updates and Servicing node of the Configuration Manager console.

Pre-production collection:

Browse...

&lt; Previous


Next &gt;

Summary

Cancel

Configuration Manager Updates Wizard

×

License Terms

General

Features

Client update options

License Terms

Cloud attach

Configure upload

Enablement

Workloads

Staging

Summary

Progress

Completion

Review and accept the terms for this update pack

You must accept the License Terms and Privacy Statement to continue installation.

[View the License Terms](#)

[View the Privacy Statement](#)

☒ I accept these License Terms and Privacy Statement.

You can add or update your Software Assurance expiration date. This date must be after 01-Oct-2016.

Software Assurance expiration date:

01-May-2021

[Learn more](#)

< Previous


Next >

Summary

Cancel

Configuration Manager Updates Wizard

×

Cloud attach

General

Features

Client update options

License Terms

Cloud attach

Configure upload

Enablement

Workloads

Staging

Summary

Progress

Completion

Cloud attach settings

Azure environment: AzurePublicCloud

Sign into Microsoft Endpoint Manager with your Microsoft organizational account

Sign In

If you do not have a Microsoft Intune subscription, you can subscribe [here](#).

☒ Enable Microsoft Endpoint Manager admin center

☐ Optionally import a separate web app to synchronize Configuration Manager client data to Microsoft Endpoint Manager admin center

Import

☒ Enable automatic client enrollment for co-management

[Read the Microsoft Intune privacy statement online.](#)

[Read the Configuration Manager privacy statement online.](#)

< Previous

Next >

Summary

Cancel

## Configuration Manager



To continue, click Sign In and type your Microsoft Intune organizational account.

OK

## Configuration Manager Updates Wizard



### Cloud attach

#### General

##### Features

##### Client update options

#### License Terms

#### Cloud attach

##### Configure upload

##### Enablement

##### Workloads

##### Staging

#### Summary

#### Progress

#### Completion

### Cloud attach settings

Azure environment: AzurePublicCloud

Sign into Microsoft Endpoint Manager with your Microsoft organizational account

Sign In

If you do not have a Microsoft Intune subscription, you can subscribe [here](#).

☒ Enable Microsoft Endpoint Manager admin center

☐ Optionally import a separate web app to synchronize Configuration Manager client data to Microsoft Endpoint Manager admin center

Import

☒ Enable automatic client enrollment for co-management

[Read the Microsoft Intune privacy statement online.](#)

[Read the Configuration Manager privacy statement online.](#)

< Previous

Next >

Summary

Cancel

## Create AAD application



This action will register an application in the AAD tenant RAMLAN to authorize the synchronization of data to Intune. Do you want to continue?

Yes

No



## Configure upload

## General

Features

Client update options

License Terms

Cloud attach

Configure upload

Enablement

Workloads

Staging

Summary

Progress

Completion

## Configure upload to Microsoft Endpoint Manager admin center

## Devices

Select which devices to upload to Microsoft Endpoint Manager

☒ All devices managed by Microsoft Endpoint Configuration Manager (recommended)☐ Specific collection

Collection:

Browse...

[Learn more](#)

## Endpoint Analytics

☒ Enable Endpoint Analytics for devices uploaded to Microsoft Endpoint Manager[Learn more](#)

&lt; Previous

Next &gt;

Summary

Cancel



## Enablement

## General

Features

Client update options

License Terms

Cloud attach

Configure upload

Enablement

Workloads

Staging

Summary

Progress

Completion

## Enable co-management

To enable co-management for devices managed by Configuration Manager, configure automatic enrollment in [Microsoft Intune](#).

[Learn more](#)

Automatic enrollment in Intune

☒ All☐ Pilot☐ None

Intune auto enrollment

Browse...

To enable co-management for devices already enrolled in Intune, create an app in Intune to install the Configuration Manager client. Copy the following command line.

[Learn more](#)

Please ensure the proper prerequisites are installed.

&lt; Previous

Next &gt;

Summary

Cancel



## Workloads

## General

Features

Client update options

License Terms

Cloud attach

Configure upload

Enablement

Workloads

Staging

Summary

Progress

Completion

## Configure workloads

For Windows 10 devices that are in a co-management state, you can have Microsoft Intune start managing different workloads. Choose Pilot Intune to have Intune manage the workloads for only clients in the Pilot group (specified later in this wizard). If you are not ready to move workloads to Intune, select Configuration Manager.

[Learn more](#)

	Configuration Manager	Pilot Intune	Intune
Compliance policies:	<input type="checkbox"/>	<input type="checkbox"/>	<input type="checkbox"/>
Device configuration:	<input type="checkbox"/>	<input type="checkbox"/>	<input type="checkbox"/>
Endpoint Protection:	<input type="checkbox"/>	<input type="checkbox"/>	<input type="checkbox"/>
Resource access policies:	<input type="checkbox"/>	<input type="checkbox"/>	<input type="checkbox"/>
Client apps:	<input type="checkbox"/>	<input type="checkbox"/>	<input type="checkbox"/>
Office Click-to-Run apps:	<input type="checkbox"/>	<input type="checkbox"/>	<input type="checkbox"/>

&lt; Previous

Next &gt;

Summary

Cancel



## Staging

## General

Features

Client update options

License Terms

Cloud attach

Configure upload

Enablement

Workloads

Staging

Summary

Progress

Completion

## Configure roll out collections

## Pilot

When you configure a workload for Pilot Intune, select a device collection to be the pilot group.

[Learn more](#)

Compliance policies:	<input type="text"/>	<input type="button" value="Browse..."/>
Device configuration:	<input type="text"/>	<input type="button" value="Browse..."/>
Endpoint Protection:	<input type="text"/>	<input type="button" value="Browse..."/>
Resource access policies:	<input type="text"/>	<input type="button" value="Browse..."/>
Client apps:	<input type="text"/>	<input type="button" value="Browse..."/>
Office Click-to-Run apps:	<input type="text"/>	<input type="button" value="Browse..."/>
Windows Update policies:	<input type="text"/>	<input type="button" value="Browse..."/>

&lt; Previous

Next &gt;

Summary

Cancel



## Summary

## General

## Features

## Client update options

## License Terms

## Cloud attach

## Configure upload

## Enablement

## Workloads

## Staging

## Summary

## Progress

## Completion

## Confirm the settings

## Details:

**Summary of update package installation**

Install Update Package Configuration Manager Technical Preview 2103  
Prerequisite warnings will be ignored  
Test new version of the client in production  
Software Assurance expiration date is 2021-05-01.

## Cloud attach

- Azure environment: AzurePublicCloud
- Enable Microsoft Endpoint Manager admin center: True

## Data Upload

- Collection to upload: All devices

## Enablement

- Devices to auto-enroll into Microsoft Intune: Configuration Manager

## Workloads Configuration

- Compliance policies: Configuration Manager
- Device configuration: Configuration Manager
- Endpoint Protection: Configuration Manager
- Resource access policies: Configuration Manager
- Client apps: Configuration Manager
- Office Click-to-Run apps: Configuration Manager
- Windows Update policies: Configuration Manager

To change these settings, click Previous. To apply the settings, click Next.

&lt; Previous

Next &gt;

Summary

Cancel



## Completion

## General

## Features

## Client update options

## License Terms

## Cloud attach

## Configure upload

## Enablement

## Workloads

## Staging

## Summary

## Progress

## Completion



## The task "Configuration Manager Updates Wizard" completed successfully

## Details:

**Summary of update package installation**

✓ Success: Install Update Package Configuration Manager Technical Preview 2103  
Prerequisite warnings will be ignored  
Test new version of the client in production  
Software Assurance expiration date is 2021-05-01.

## Cloud attach

- Azure environment: AzurePublicCloud
- Enable Microsoft Endpoint Manager admin center: True

## Data Upload

- Collection to upload: All devices

## Enablement

- Devices to auto-enroll into Microsoft Intune: Configuration Manager

## Workloads Configuration

- Compliance policies: Configuration Manager
- Device configuration: Configuration Manager
- Endpoint Protection: Configuration Manager
- Resource access policies: Configuration Manager
- Client apps: Configuration Manager

To exit the wizard, click Close.

&lt; Previous

Next &gt;

Summary

Close

Updates and Servicing 3 items							
Search							
Name	Date Released	State	Prereq Only	Ignore Prereq Warning	Full Version	Client Version	Last Update Time
Configuration Manager Technical Preview 2103	02-Mar-2021 11:00 AM	Installing	No	Yes	5.00.9047.1000	5.00.9047.1000	04-Mar-2021 10:16 AM
Configuration Manager Technical Preview 2103	02-Mar-2021 11:00 AM	Installing	No	Yes	5.00.9047.1000	5.00.9047.1000	04-Mar-2021 10:16 AM

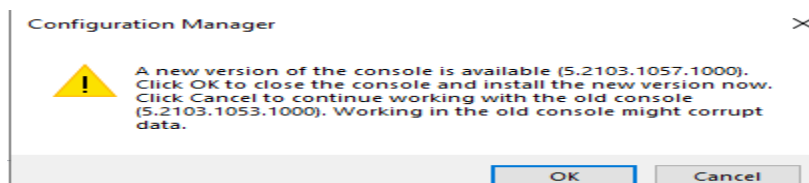
Updates and Servicing 2 items							
Search							
Name	Date Released	State	Prereq Only	Ignore Prereq Warning	Full Version	Client Version	Last Update Time
Configuration Manager Technical Preview 2103	02-Mar-2021 11:00 AM	Checking prerequisites	No	Yes	5.00.9047.1000	5.00.9047.1000	04-Mar-2021 10:21 AM

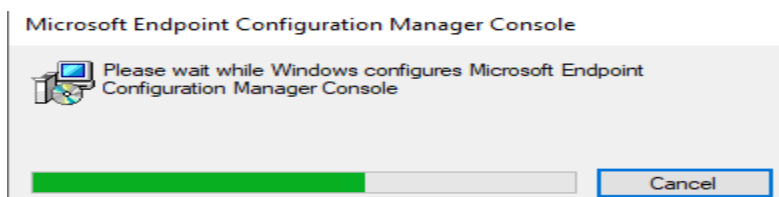
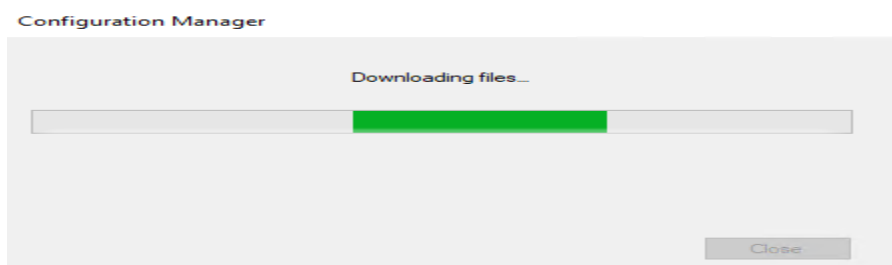
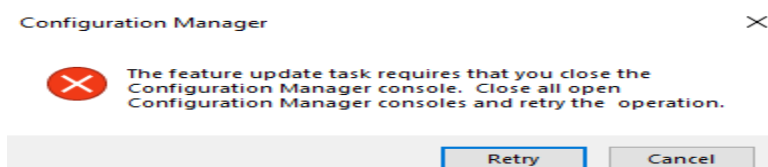
Updates and Servicing 2 items							
Search							
Name	Date Released	State	Prereq Only	Ignore Prereq Warning	Full Version	Client Version	Last Update Time
Configuration Manager Technical Preview 2103	02-Mar-2021 11:00 AM	Installing	No	Yes	5.00.9047.1000	5.00.9047.1000	04-Mar-2021 10:40 AM

Updates and Servicing 1 items							
Search							
Name	Date Released	State	Prereq Only	Ignore Prereq Warning	Full Version	Client Version	Last Update Time
Configuration Manager Technical Preview 2103	02-Mar-2021 11:00 AM	Installed	No	Yes	5.00.9047.1000	5.00.9047.1000	04-Mar-2021 11:21 AM



When, I got below error, I restarted the server and terminated configuration manager remote service from task manager to update the console.



## Microsoft Endpoint Configuration Manager 2103 Tech Preview

Welcome to update 2103 for Configuration Manager Technical Preview. Below you can find information about some of the new features and scenarios that are now available for you to try. You can also view which of the new scenarios you have completed for each feature. [Read more](#) about the latest changes in the Technical Preview build.

Please continue to give us feedback! To report any issues, file [product feedback](#) in the console. To request a new feature or enhancement, use the [Configuration Manager UserVoice site](#).

### 4 What's New in 2103

#### Configuration Manager Cmdlet Library changes

Changes to the Windows PowerShell cmdlets for Configuration Manager version 2103. In addition to new cmdlets, changes may include new functionality, bug fixes, or cmdlet deprecation. Some changes may not be backwards compatible. If you use one of the cmdlets listed in the release notes, carefully review the changes to understand how they may affect your use.



## **NEW FEATURES:**

**Configuration Manager Cmdlet Library changes** - Changes to the Windows PowerShell cmdlets for Configuration Manager version 2103. In addition to new cmdlets, changes may include new functionality, bug fixes, or cmdlet deprecation. Some changes may not be backwards compatible. If you use one of the cmdlets listed in the release notes, carefully review the changes to understand how they may affect your use.

### **New cmdlets**

#### **Remove-CMClientSettingDeployment**

Use this cmdlet to remove a specific deployment of a client setting.

PowerShell

 Copy

```
$clientSettingId = (Get-CMClientSetting -name "Remote control").SettingsID  
  
Remove-CMClientSettingDeployment -CollectionID 'XYZ0003F' -ClientSettingsID $clientSettingId
```

### **Modified cmdlets**

#### **Fast support**

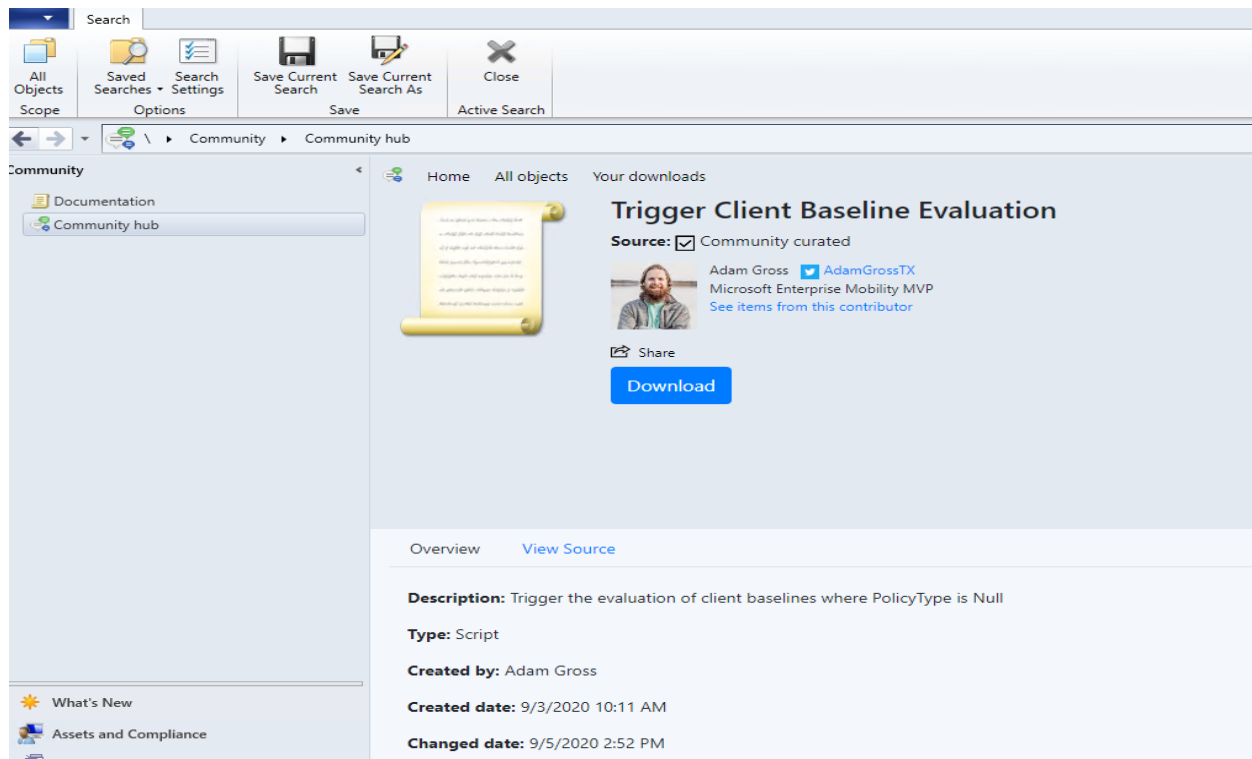
The following cmdlets now support the **Fast** parameter. Use this parameter to not automatically refresh lazy properties. Lazy properties contain values that are relatively inefficient to retrieve. Getting these properties can cause more network traffic and affect cmdlet performance.

- Get-CMAAlert
- Get-CMAAlertSubscription
- Get-CMBaseline
- Get-CMBaselineDeployment
- Get-CMBaselineDeploymentStatus
- Get-CMClientCertificatePfx
- Get-CMComplianceRule
- Get-CMComplianceSetting
- Get-CMConfigurationPlatform
- Get-CMConfigurationPolicyDeployment
- Get-CMDriver
- Get-CMDriverPackage
- Get-CMTaskSequence
- Get-CMTaskSequenceDeployment

#### **Get-CMPackage**

**Non-breaking changes**

**Community hub support for configuration baselines** - Community hub now supports contributing and downloading configuration baselines including the child configuration items. This integration allows administrators to easily share and reuse configuration baselines and configuration items. Baselines with software updates or version-specific references aren't supported. Contributing and downloading configuration baselines is also available for current branch versions of Configuration Manager. For more information, see [What's new in community hub](#) and [Contribute to the community hub](#).



## Contributing a configuration baseline

When you contribute a configuration baseline, each of the child configuration items is verified. The verification starts at the lowest nested level. This means that configuration items that are grandchildren are verified before direct child configuration items are. The following process occurs to ensure the configuration baseline is usable and complete:

1. Check if the child configuration item is already in the community hub. If the configuration item doesn't exist, it's created.
  - A configuration item with software updates or version-specific references will cause an error and the contribution will fail.
2. If the configuration item already exists in the community hub, verify the contributor is the author. If the contributor isn't the author, a new configuration item is created in community hub.
3. If the contributor is the author, check for local updates to the configuration item. If the configuration item changed, update the item in the community hub.

**Tenant attach: Antivirus policy supports exclusions merge-** When a tenant attached device is targeted with two or more antivirus policies, the settings for antivirus exclusions will merge before being applied to the client. This change results in the client receiving the exclusions defined in each policy, allowing for more granular control of antivirus exclusions.

## Try it out!

Try to complete the tasks. Then send **Feedback** with your thoughts on the feature.

## Prerequisites

- All of the prerequisites for **Tenant attach: Create and deploy endpoint security policies from the admin center**.
- The latest version of the Configuration Manager client installed

## Create two policies with different antivirus exclusions

1. Create an antivirus policy from the **Microsoft Endpoint Manager admin center** <sup>u</sup> that includes some **antivirus exclusions**.
2. Create a second antivirus policy including only antivirus exclusions that are different from the first policy.
3. **Assign both antivirus policies** to the same collection.
4. Observe the results on a client in the targeted collection. Antivirus exclusions from both policies are applied.

**New CMG deployments use TLS 1.2-** Starting this release, new deployments of the cloud management gateway (CMG) by default enable the option to Enforce TLS 1.2. This change doesn't affect existing deployments. While not recommended, if you need to use the less secure TLS protocol versions, you can still disable this option.

**Cloud attach during site upgrade-** Microsoft Endpoint Manager is an integrated solution for managing all of your devices. Cloud attach brings together Configuration Manager and Intune into a single console called Microsoft Endpoint Manager admin center. If you haven't already enabled the following cloud attach features, now the site upgrade process lets you cloud attach the site:

Try to complete the tasks. Then send **Feedback** with your thoughts on the feature.

1. Install the update for 2103 technical preview branch. For more information, see **Install in-console updates**.
2. On the new **Cloud attach** page of the Updates Wizard, select **Sign in**. Sign in to Azure Active Directory (Azure AD) with a *Global Administrator* account.

The wizard enables the following options by default:

- **Enable Microsoft Endpoint Manager admin center**
- **Enable automatic client enrollment for co-management**

By default, Configuration Manager uses your global administrator credentials to register an app in your Azure AD tenant. It uses this app to authorize synchronization of data between your on-premises site and Intune. To use an app that you already created, select **Optionally import a separate web app....**

3. On the **Configure upload** page of the wizard, select the recommended device upload setting of **All my devices managed by Microsoft Endpoint Configuration Manager**. If needed, you can limit upload to a single device collection.

The wizard enables by default the option to **Enable Endpoint analytics for devices uploaded to Microsoft Endpoint Manager**. Use Endpoint Analytics to get insights to optimize the end-user experience. For more information, see **What is Endpoint analytics?**

4. On the **Enablement** page of the wizard, configure automatic device enrollment to Intune.
5. On the **Workloads** page, configure which device authority manages each supported workload. For more information, see **How to switch Configuration Manager workloads to Intune**.
6. If you configure a workload for Pilot Intune, use the **Staging** page of the wizard to select a device collection for the pilot.
7. Complete the Updates Wizard.

After the site finishes updating to version 2103, you can take advantage of the cloud attach features.

To help troubleshoot, use the following log files:

- For upgrade progress, see **ConfigMgrSetup.log** at the root of the system drive.
- For more information on cloud attach, see **CMGatewaySyncUploadWorker.log** in the site's log directory.

## Known issue with cloud attach during site upgrade

If you opt out of cloud attach during the Updates Wizard, you still need to sign in on the **Cloud attach** page. It doesn't enable cloud attach features if you don't select them, but you can't continue the wizard unless you authenticate.

This concludes all the new features of TP2103.

Thanks

Ram Lan  
4<sup>th</sup> Mar 2021