

# How to enable remote errors for SSRS or PBRS

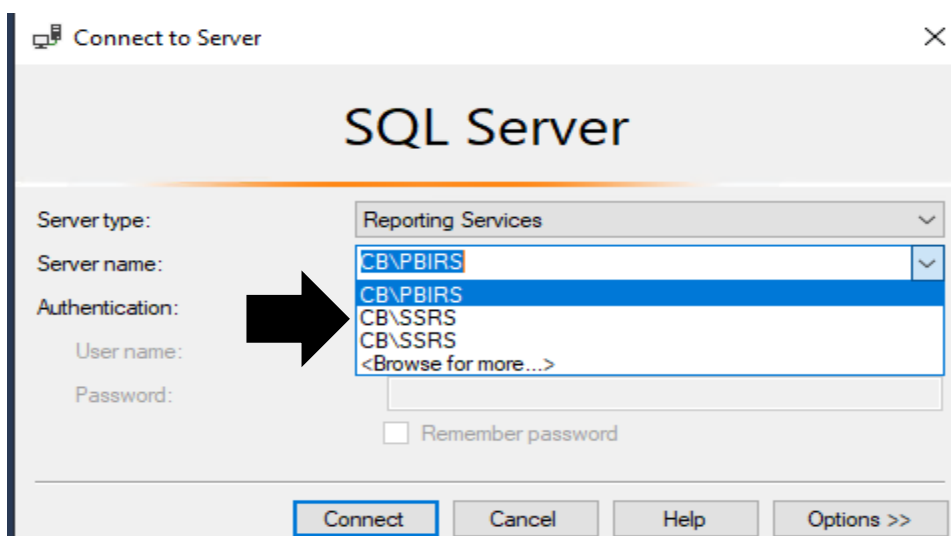
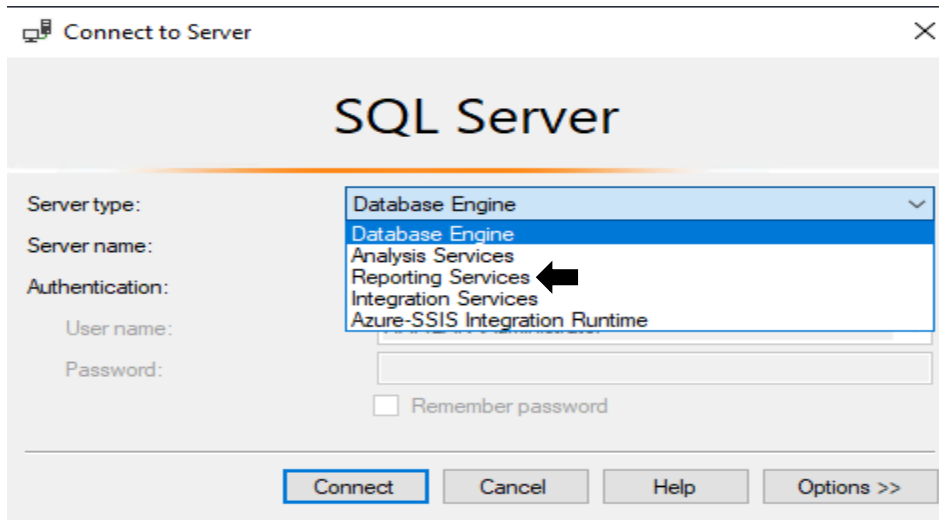
In this post we will enable remote errors for SSRS. The steps are same for PBRS as well.

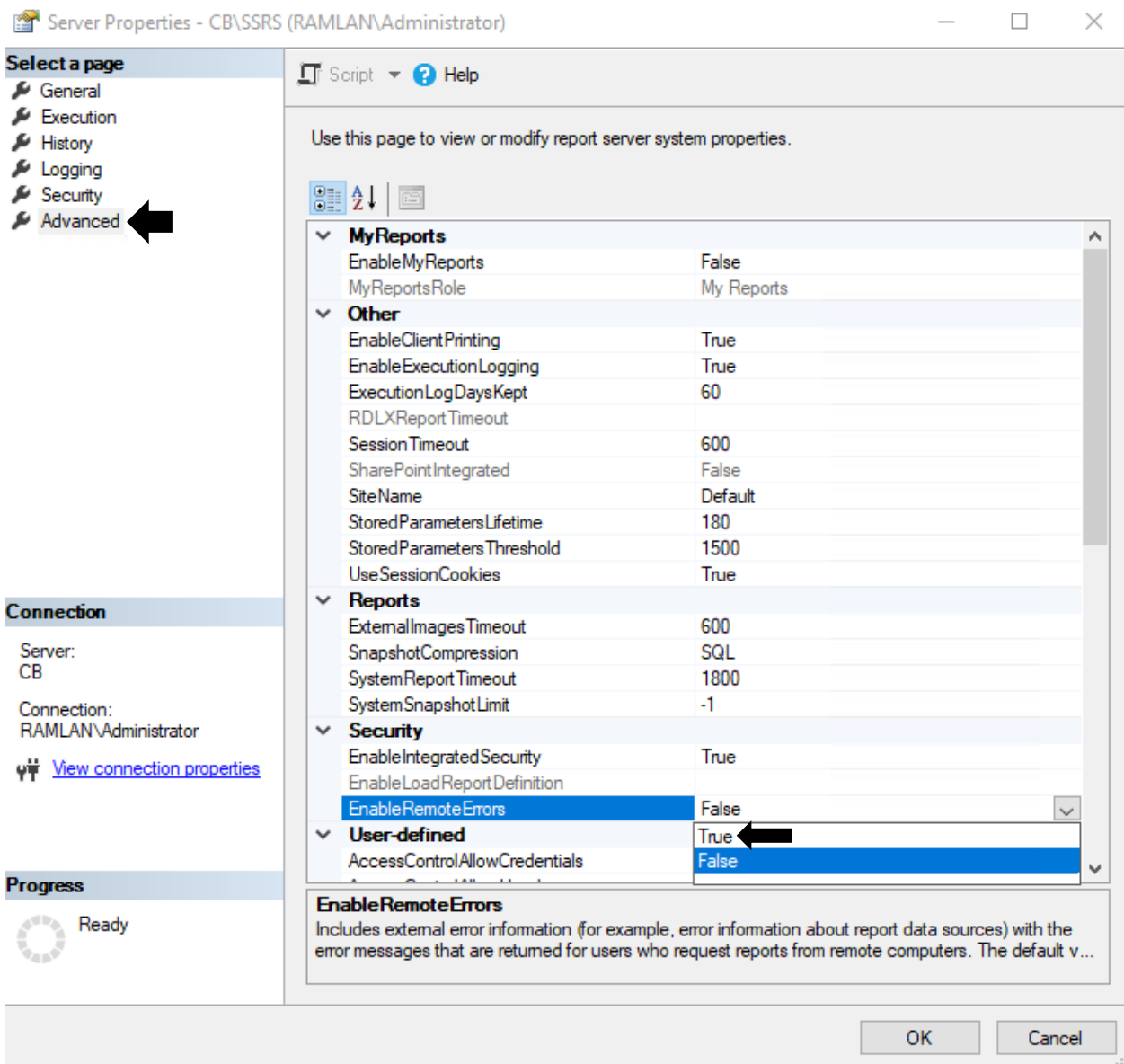
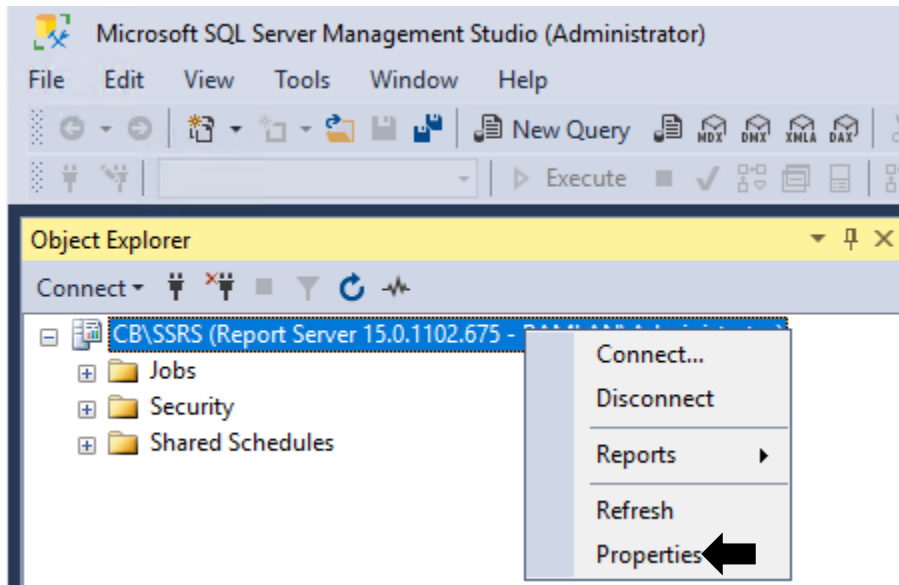
When you work a lot on reports in either Power BI Report Server (PBRS) or SQL Server Reporting Services (SSRS), at some point you are bound to get errors that basically say: go to the server to see the real error OR enable remote errors

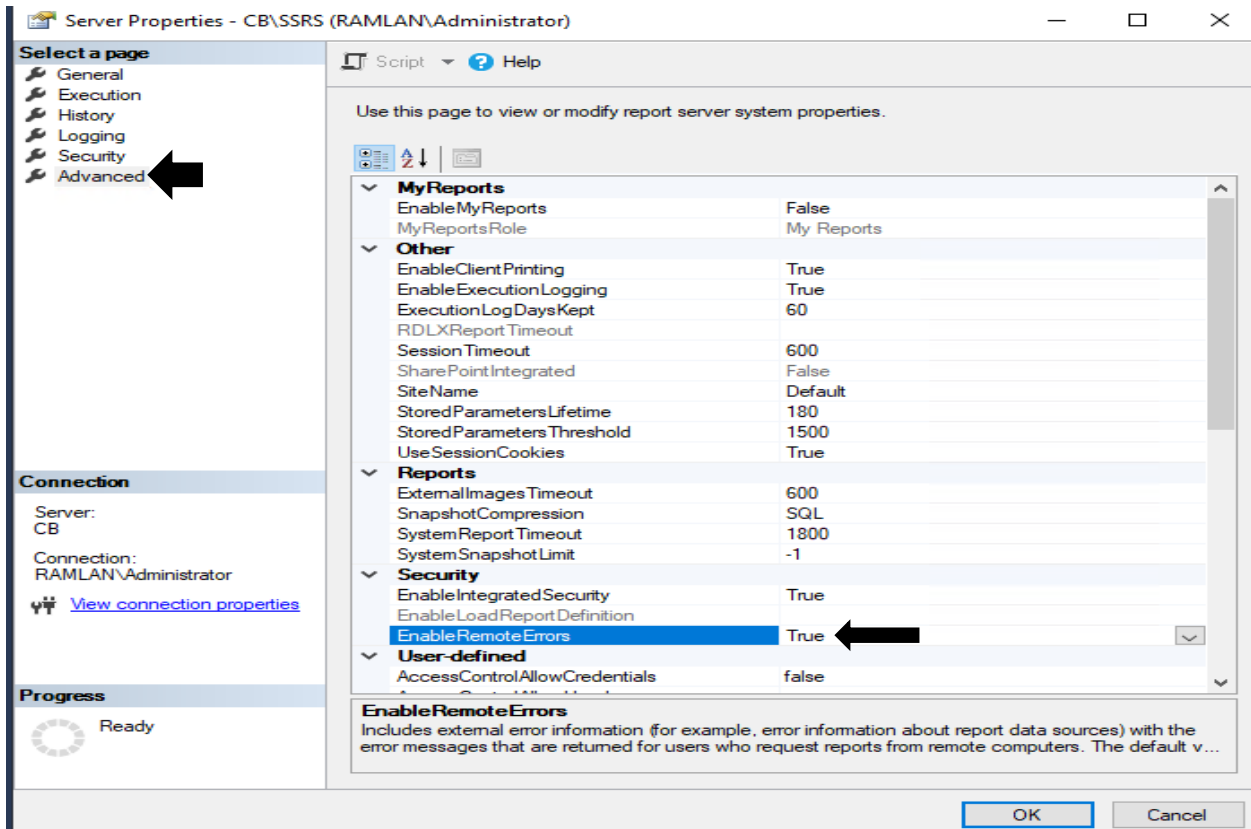
Why is this important? If remote error reporting is not enabled, the actual reason behind an error message is not displayed. I don't need to tell you that you can't fix something if you don't know what's broken. Why does this happen? PBRS and SSRS do this for security reasons because there is the potential that someone is shown something they shouldn't see. IMO, however, I believe that with ConfigMgr the risk is minimal at best.

How to Enable Remote Errors

Open SQL Server Management Studio (SSMS). I recommend that you open it with administrator rights because I have seen odd results when this isn't done. On the Connect to Server window, make sure to select Reporting Services in the Server type dropdown menu. Then enter your PBRS or SSRS server name. Finally, click Connect.

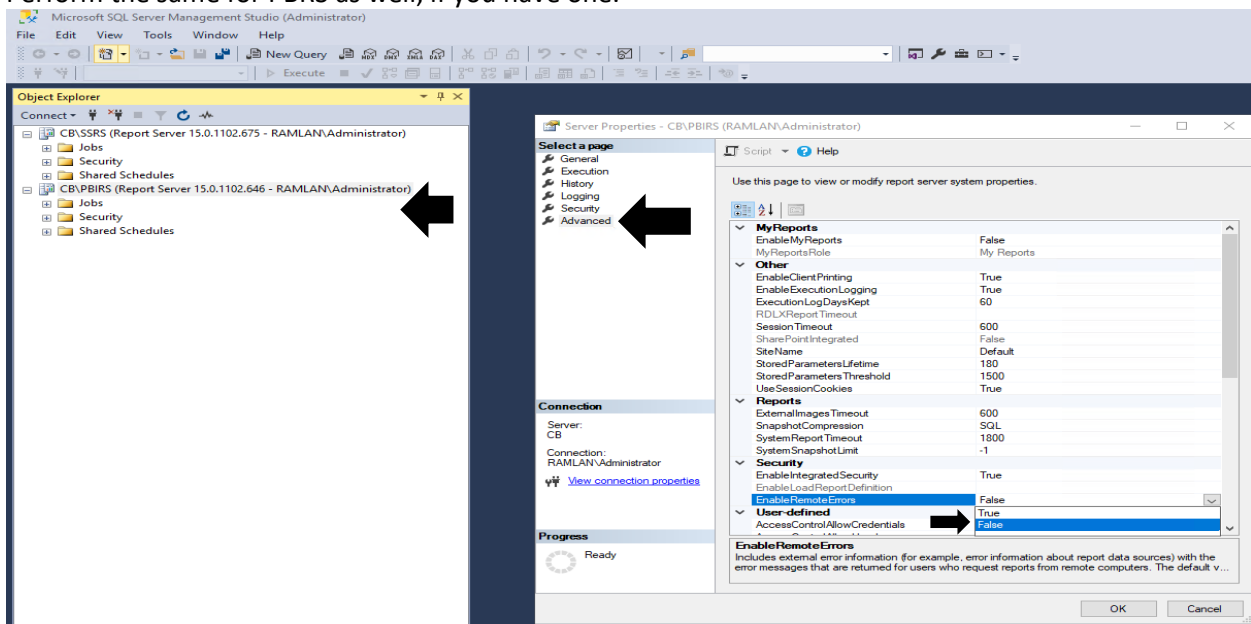






At this point, I like to stop and re-start SQL Server in order to ensure that the setting is updated. After I re-start SQL Server (or the server itself) I can clearly see what the error is and now the report can be quickly updated to solve this problem.

Perform the same for PBRS as well, if you have one.



Thanks

Ram Lan  
11<sup>th</sup> Feb 2021