

How to install Syslog Server on Windows Server 2019

In this post we will discuss about Syslog server and how to install and monitor windows server logs at a central location. I am using Kiwi Syslog Server (Free Version) to monitor 5 Windows Server.

Name	Date modified	Type	Size
Kiwi Syslog Server 9.7.0.Freeware.setup.exe	28-Aug-2020 10:29 AM	Application	25,960 KB

License Agreement
Please review the license terms before installing Kiwi Syslog Server 9.7.0 .

Press Page Down to see the rest of the agreement.

**SOLARWINDS
END USER LICENSE AGREEMENT**

BY ACCEPTING THIS AGREEMENT, EITHER BY INDICATING YOUR ACCEPTANCE, BY EXECUTING AN ORDER FORM THAT REFERENCES THIS AGREEMENT, OR BY DOWNLOADING, INSTALLING AND/OR UTILIZING THE SOFTWARE (DEFINED BELOW), YOU AGREE TO THIS AGREEMENT THIS AGREEMENT IS A

If you accept the terms of the agreement, click I Agree to continue. You must accept the agreement to install Kiwi Syslog Server 9.7.0 .

SolarWinds, Inc. _____

Choose Operating Mode
The program can be run as a Service or Application

Install Kiwi Syslog Server as a Service
This option installs Kiwi Syslog Server as a Windows service, allowing the program to run without the need for a user to login to Windows. This option also installs the Kiwi Syslog Server Manager which is used to control the service.

Install Kiwi Syslog Server as an Application
This option installs Kiwi Syslog Server as a typical Windows application, requiring a user to login to Windows before running the application.

SolarWinds, Inc. _____

Kiwi Syslog Server 9.7.0 Installer

solarwinds **Service Install Options**

Choose the account that you would like to use to install the Kiwi service.

IMPORTANT NOTICE: If you are not using the LocalSystem account to install the service then you **MUST** use an account that is a member of the local Administrators group.

Install the Service using:

The LocalSystem Account:

An Admin Account:

Password:

Confirm password:

SolarWinds, Inc.

< Back Next > Cancel

Kiwi Syslog Server 9.7.0 Installer

solarwinds **Choose Components**

Choose which features of Kiwi Syslog Server 9.7.0 you want to install.

This will install Kiwi Syslog Server version 9.7.0

Select the type of install:

Or, select the optional components you wish to install:

- Program files (required)
- Shortcuts apply to all users
- Add Start menu shortcut
- Add Desktop shortcut
- Add QuickLaunch shortcut
- Add Start-up shortcut

Space required: 97.2MB

Description
Position your mouse over a component to see its description.

SolarWinds, Inc.

< Back Next > Cancel



Choose Install Location

Choose the folder in which to install Kiwi Syslog Server 9.7.0 .

Setup will install Kiwi Syslog Server 9.7.0 in the following folder. To install in a different folder, click Browse and select another folder. Click Install to start the installation.

Destination Folder

C:\Program Files (x86)\Syslogd

Browse...

Space required: 97.2MB

Space available: 26.5GB

SolarWinds, Inc.

< Back

Install

Cancel



Completing the Kiwi Syslog Server 9.7.0 Setup Wizard

Kiwi Syslog Server 9.7.0 has been installed on your computer.

Click Finish to close this wizard.

Run Kiwi Syslog Server 9.7.0

[Visit the SolarWinds website](#)

< Back

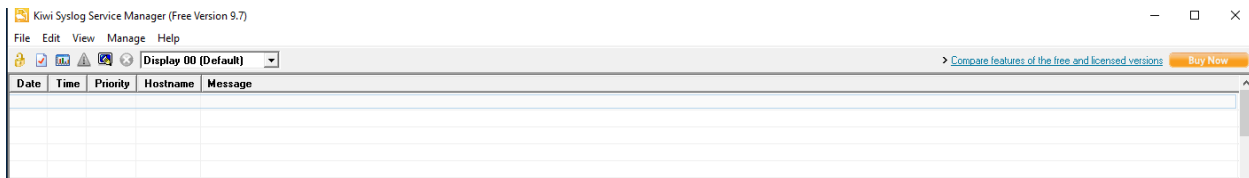
Finish

Cancel



Kiwi Syslog free version supports up to 5 message sources. Please define them under Inputs in Setup.

OK



.: About .:



Kiwi Syslog Server

Version 9.7.0.167

Copyright (C) 1995-2020 SolarWinds, Inc.. All rights reserved.

License Type Free

Activation Key None

Software Maintenance Expiry Date: None

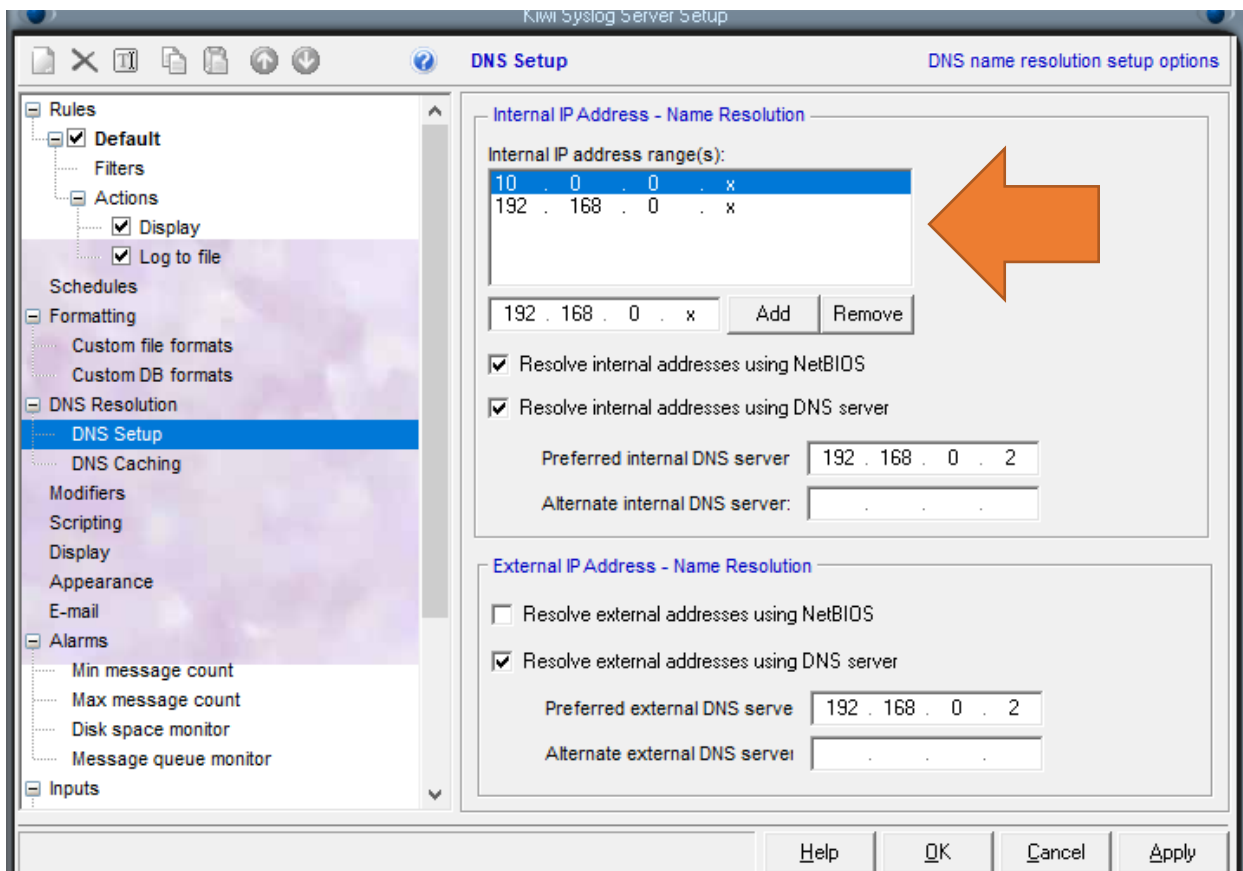
More Information:

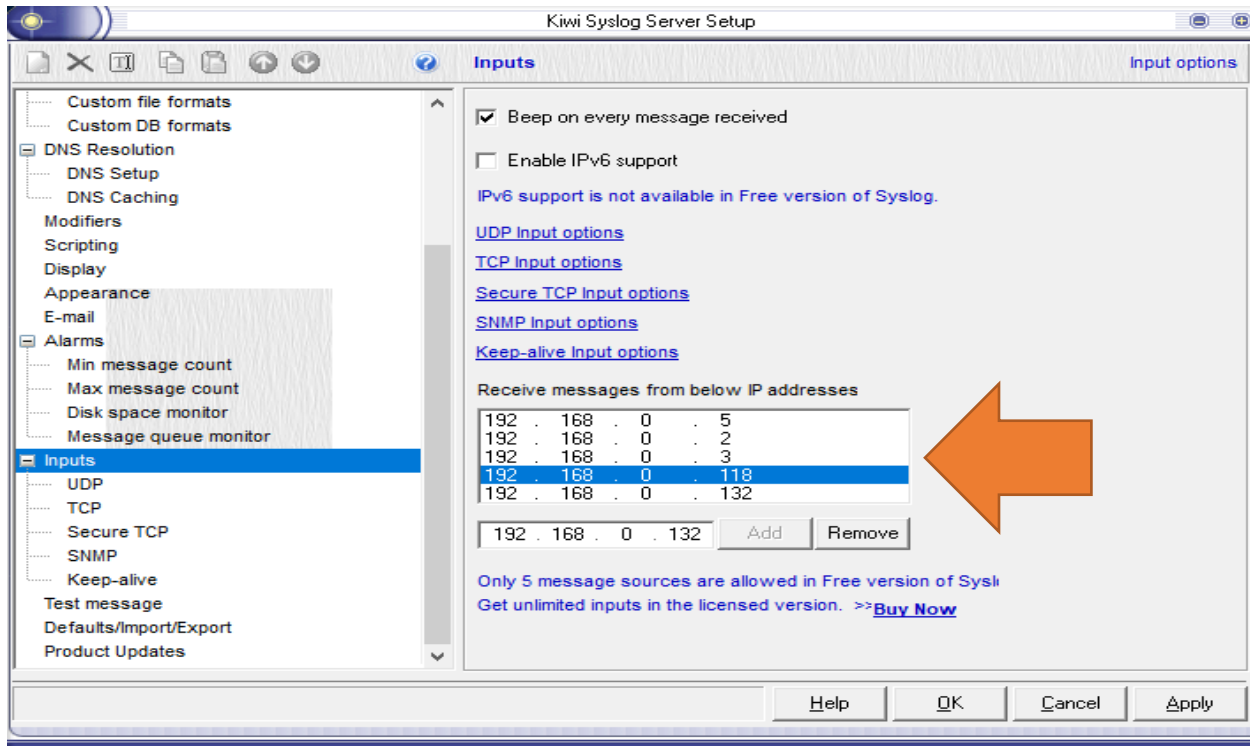
Website: <https://www.kiwisyslog.com/kiwi-syslog-server>

Support: <https://support.solarwinds.com/SuccessCenter/s/kiw>

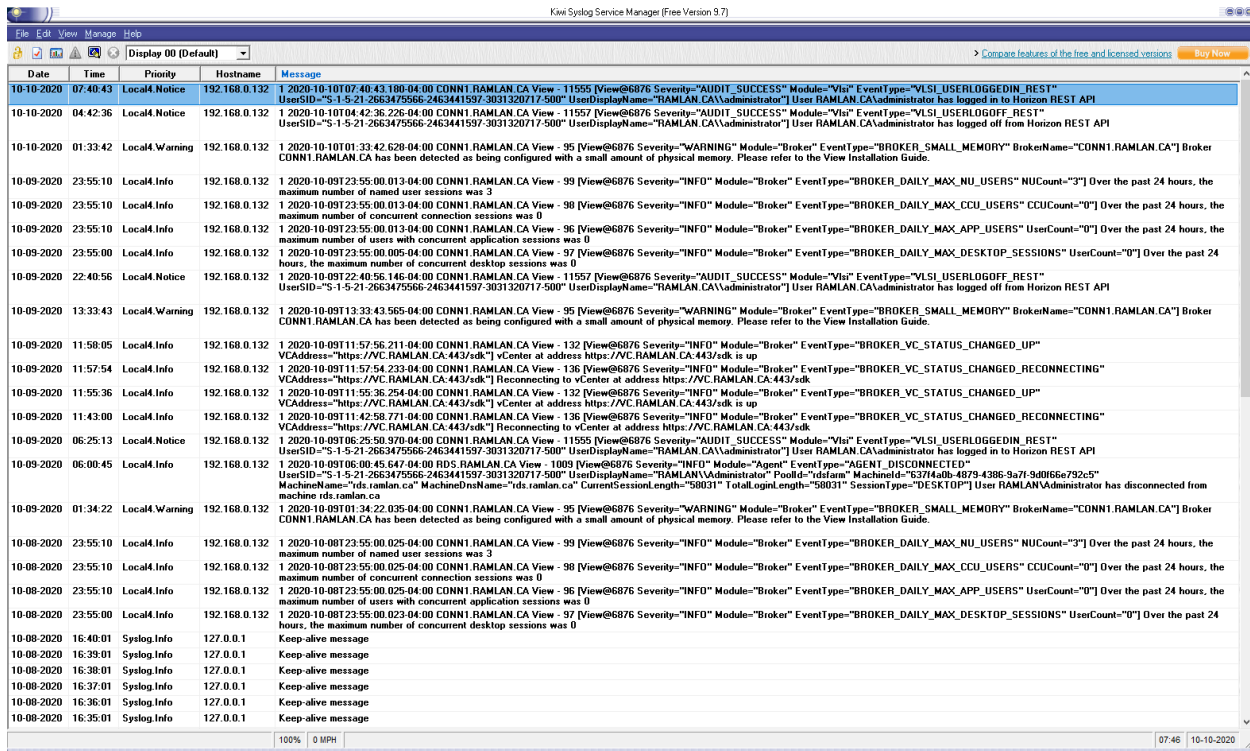
Purchase: <https://ecomm.solarwinds.com/onepagecheckout/ki>

OK





This is what you will see after initial configuration. It will take few hours for the logs to generate.



This concludes how to install Kiwi Syslog Server to monitor the logs from Windows Server.

Thanks

Ram Lan

10th Oct 2020