

How to add vCenter 7 to Veeam B&R 10

In this post, I will show you how to add vCenter to Veeam Backup & Replication Server v10. This will be useful, if you want to backup virtual machines.

Login to Veeam B&R console. Click Inventory



ADD SERVER

Before using Veeam Backup & Replication, you must register your protected data sources in the inventory. To start this process, click the Add Server button in the ribbon (or just click this text). For VMware vSphere protection, add a vCenter Server. You can also add ESXi hosts individually. Adding vCenter Server is preferred, because it makes Veeam Backup & Replication vMotion-aware. For Microsoft Hyper-V protection, add System Center Virtual Machine Manager (SCVMM) Servers, Hyper-V clusters, or standalone Hyper-V hosts. For physical and cloud servers and workstations protection, create one or more Protection Groups listing all computers you want to backup. For NAS protection, add an NDMP server. Note that NDMP backups are only supported to tape or Virtual Tape Libraries (VTL).



CREATE JOB

Veeam Backup & Replication provides different options to balance recovery time with storage requirements. Backup consumes less disk space but requires longer recovery time, making it ideal for long term data retention. Replication provides faster recovery time at the increased storage costs and shorter retention. To create a new backup or replication job, go to the Backup & Replication tree tab, and click the corresponding button in the ribbon.



RESTORE

To restore a machine from a backup or a replica, click the Restore button in the ribbon and select the required restore type. Alternatively, you can browse the Backups node of the Backup & Replication tab to locate the required machine by searching for its name. You can also start a restore by double-clicking the full backup (.VBK) file in the Windows Explorer.

Add Server



Select the type of a server you want to add to your backup infrastructure. All already registered servers can be found under the Managed Servers node on the Backup Infrastructure tab.



VMware vSphere

Adds VMware private cloud infrastructure servers to the inventory.



Microsoft Hyper-V

Adds SCVMM server, Hyper-V cluster, or standalone host (2008 R2 or later) to the inventory.



Protection Group

Adds a group of physical or cloud servers or workstations to the inventory.

Cancel



VMware vSphere

Select the type of a VMware server you want to add to the inventory.



vSphere

Adds vCenter Server (recommended), or standalone vSphere Hypervisor (ESXi) to the inventory.



vCloud Director

Adds VMware vCloud Director server to the inventory.

Cancel

New VMware Server

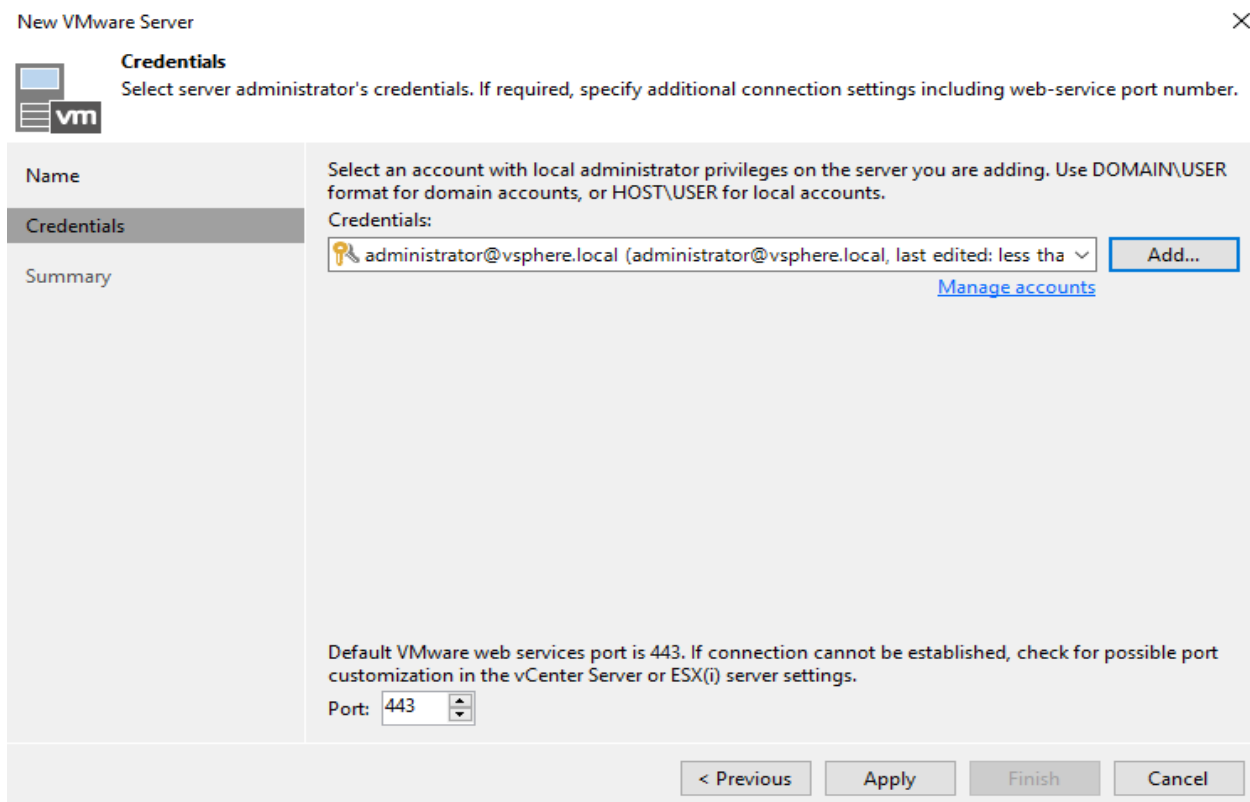
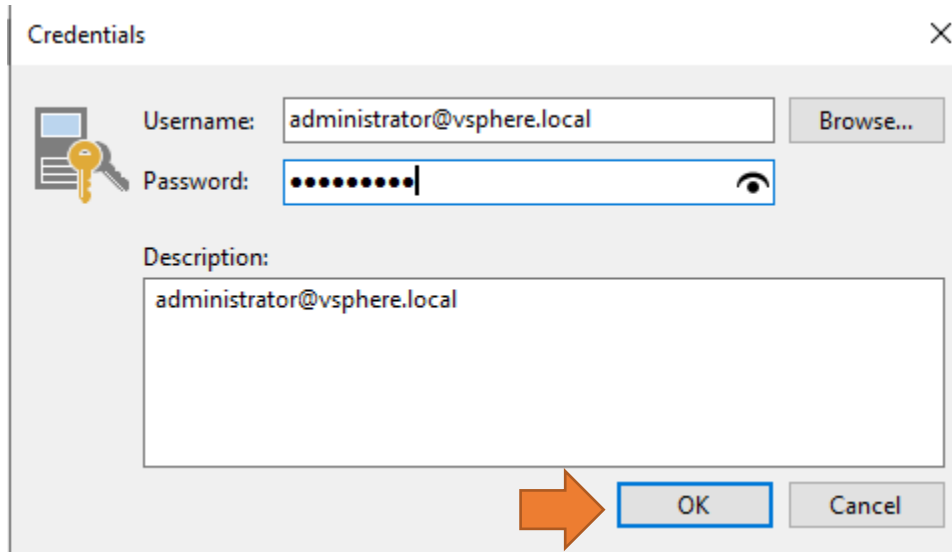
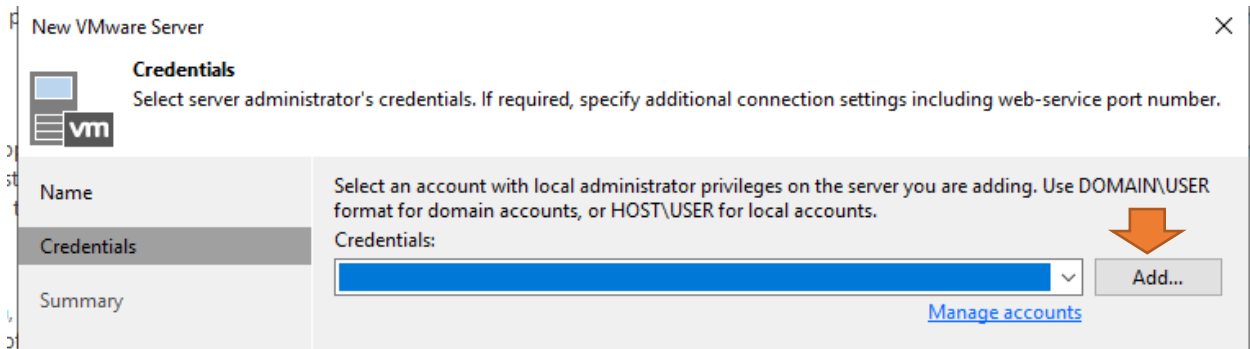


Name


Specify DNS name or IP address of VMware server.

Name	DNS name or IP address: <input type="text" value="VC.RAMLAN.CA"/>
Credentials	
Summary	Description: Created by RAMLAN\administrator at 01-Oct-2020 10:34 AM.


< Previous **Next >** Finish Cancel



Certificate Security Alert

 An untrusted certificate is installed on VC.RAMLAN.CA and secure communication cannot be guaranteed. Connect to this server anyway?

Remote certificate chain errors:
PartialChain (A certificate chain could not be built to a trusted root authority.)

[View...](#)  [Continue](#) [Cancel](#)

New VMware Server

Summary
You can copy the configuration information below for future reference.

Name

Credentials

Summary

Summary:
 VMware vCenter Server 'VC.RAMLAN.CA' was successfully created.
 Host info: VMware vCenter Server 7.0.0 build-16749670
 Connection options:
 User: administrator@vsphere.local
 Port: 443

< Previous Next > [Finish](#) Cancel

Here is the list of running VM's on vCenter

SERVER TOOLS VEEAM BACKUP AND REPLICATION

HOME VIEW SERVER


Add Server Edit Server Remove Server Set Location Rescan Upgrade

INVENTORY

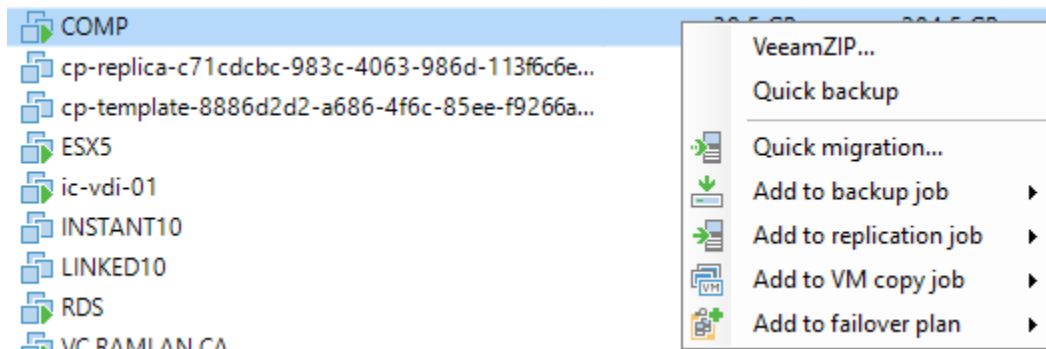
Virtual Infrastructure

- Microsoft Hyper-V
- Standalone Hosts
 - DC.RAMLAN.CA
- VMware vSphere
 - vCenter Servers
 - VC.RAMLAN.CA**
- Physical Infrastructure
 - Manually Added
 - Unmanaged
 - File Shares
 - Last 24 Hours
 - Success

NAME ↑	USED SIZE	PROVISION...	FOLDER	HOST	GUEST OS
2019Template	14.1 GB	254.2 GB	vm	esx2.ramlan.ca	Microsoft Windows Ser...
COMP	39.5 GB	284.5 GB	vm	esx2.ramlan.ca	Microsoft Windows Ser...
cp-replica-c71cdcbc-983c-4063-986d-113f6c6e...	18.5 GB	67.5 GB	ClonePrepReplicaVmFo...	esx6.ramlan.ca	
cp-template-8886d2d2-a686-4f6c-85ee-f9266a...	18.2 GB	67.3 GB	ClonePrepInternalTem...	esx6.ramlan.ca	
ESXS	44.1 GB	44.1 GB	vm	esx2.ramlan.ca	VMware ESXi 7.0 or later
ic-vdi-01	20 GB	66.8 GB	InstantClonePool	esx2.ramlan.ca	Microsoft Windows 10...
INSTANT10	18.1 GB	67.2 GB	vm	esx6.ramlan.ca	
LINKED10	0 B	52.6 GB	vm	esx6.ramlan.ca	
RDS	38.1 GB	283.7 GB	Discovered virtual mac...	esx6.ramlan.ca	Microsoft Windows Ser...
VC.RAMLAN.CA	72.6 GB	446.1 GB	vm	esx2.ramlan.ca	VMware Photon OS (6...
vLog Insight	40.4 GB	568 GB	vm	esx2.ramlan.ca	Other 3.x Linux (64-bit)
vOps	97.2 GB	290.1 GB	Discovered virtual mac...	esx6.ramlan.ca	VMware Photon OS (6...
vReplication	6.2 GB	36.6 GB	vm	esx2.ramlan.ca	Other 3.x Linux (64-bit)



Now we can backup VM's as and when required.



This concludes adding vCenter to Veeam B&R.

Thanks

Ram Lan

1st Oct 2020