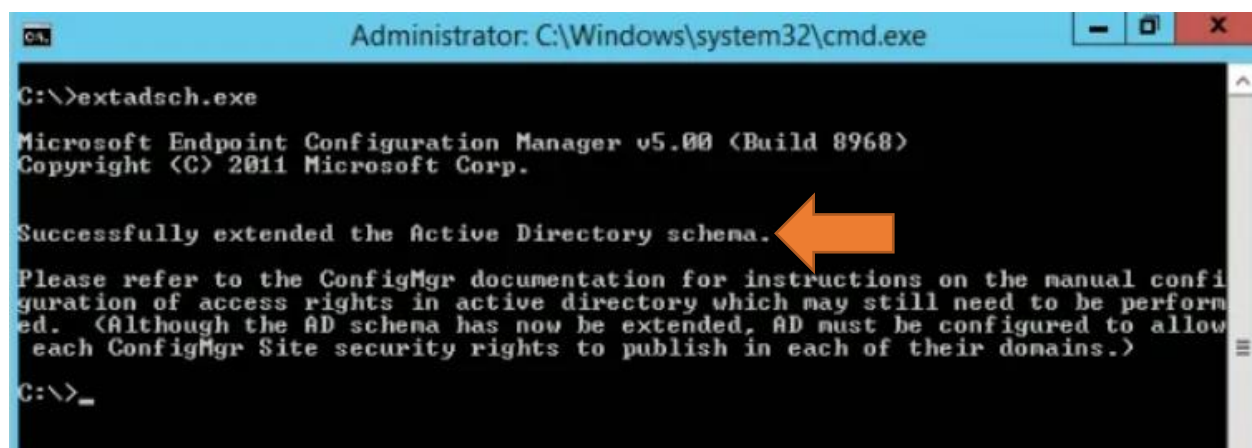
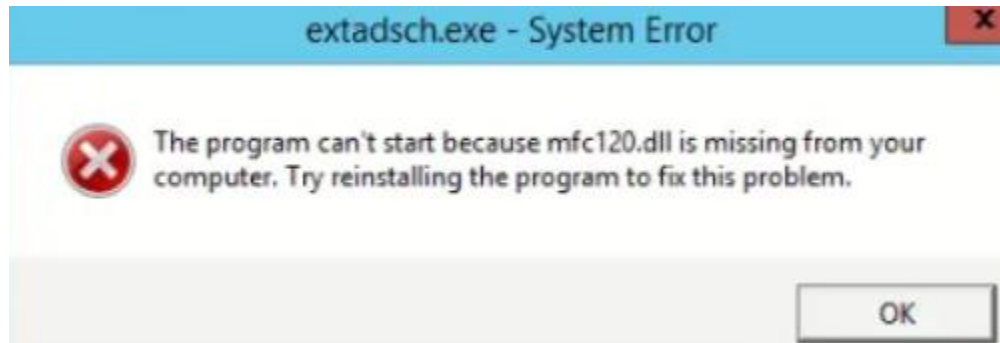
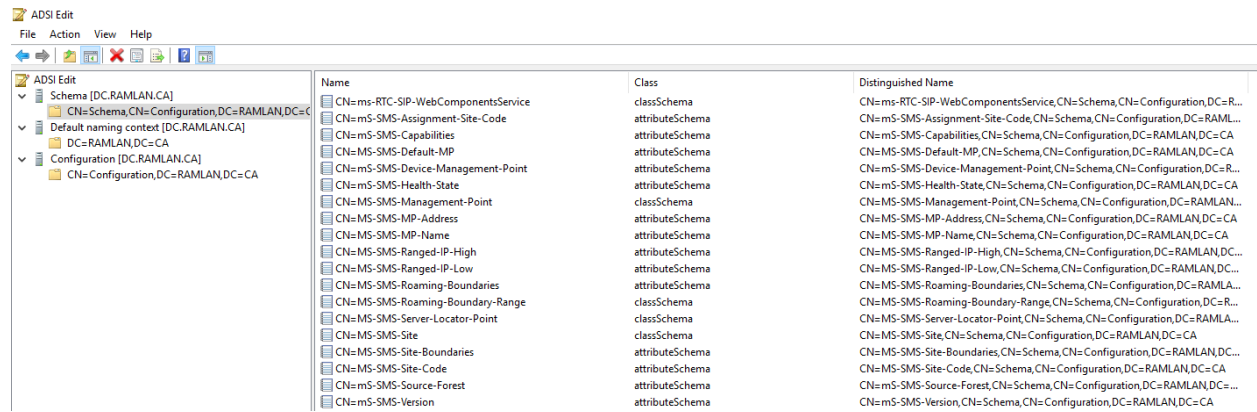


Extending Schema Error for Configuration Manager

I was trying to extend schema on Domain Controller as Schema Admin for installing Configuration Manager. I ran into this error. The solution was quick. Just install the right version of C++ Dist x64 and then try schema extension. It worked.



Open ADSIEdit and check for schema extension entries for SMS.



The screenshot shows the ADSI Edit application window. The left pane displays a tree view of the schema structure, including 'Schema [DC.RAMLAN.CA]', 'Default naming context [DC.RAMLAN.CA]', and 'Configuration [DC.RAMLAN.CA]'. The right pane shows a list of schema entries with columns for Name, Class, and Distinguished Name.

Name	Class	Distinguished Name
CN=ms-RTC-SIP-WebComponentsService	classSchema	CN=ms-RTC-SIP-WebComponentsService,CN=Schema,CN=Configuration,DC=R...
CN=mS-SMS-Assignment-Site-Code	attributeSchema	CN=mS-SMS-Assignment-Site-Code,CN=Schema,CN=Configuration,DC=RAML...
CN=mS-SMS-Capabilities	attributeSchema	CN=mS-SMS-Capabilities,CN=Schema,CN=Configuration,DC=RAMLAN,DC=CA
CN=mS-SMS-Default-MP	attributeSchema	CN=mS-SMS-Default-MP,CN=Schema,CN=Configuration,DC=RAMLAN,DC=CA
CN=mS-SMS-Device-Management-Point	attributeSchema	CN=mS-SMS-Device-Management-Point,CN=Schema,CN=Configuration,DC=R...
CN=mS-SMS-Health-State	attributeSchema	CN=mS-SMS-Health-State,CN=Schema,CN=Configuration,DC=RAMLAN,DC=CA
CN=mS-SMS-Management-Point	classSchema	CN=mS-SMS-Management-Point,CN=Schema,CN=Configuration,DC=RAMLAN...
CN=mS-SMS-MP-Address	attributeSchema	CN=mS-SMS-MP-Address,CN=Schema,CN=Configuration,DC=RAMLAN,DC=CA
CN=mS-SMS-MP-Name	attributeSchema	CN=mS-SMS-MP-Name,CN=Schema,CN=Configuration,DC=RAMLAN,DC=CA
CN=mS-SMS-Ranged-IP-High	attributeSchema	CN=mS-SMS-Ranged-IP-High,CN=Schema,CN=Configuration,DC=RAMLAN,DC...
CN=mS-SMS-Ranged-IP-Low	attributeSchema	CN=mS-SMS-Ranged-IP-Low,CN=Schema,CN=Configuration,DC=RAMLAN,DC...
CN=mS-SMS-Roaming-Boundaries	attributeSchema	CN=mS-SMS-Roaming-Boundaries,CN=Schema,CN=Configuration,DC=RAML...
CN=mS-SMS-Roaming-Boundary-Range	classSchema	CN=mS-SMS-Roaming-Boundary-Range,CN=Schema,CN=Configuration,DC=R...
CN=mS-SMS-Server-Locator-Point	classSchema	CN=mS-SMS-Server-Locator-Point,CN=Schema,CN=Configuration,DC=RAML...
CN=mS-SMS-Site	classSchema	CN=mS-SMS-Site,CN=Schema,CN=Configuration,DC=RAMLAN,DC=CA
CN=mS-SMS-Site-Boundaries	attributeSchema	CN=mS-SMS-Site-Boundaries,CN=Schema,CN=Configuration,DC=RAMLAN,DC...
CN=mS-SMS-Site-Code	attributeSchema	CN=mS-SMS-Site-Code,CN=Schema,CN=Configuration,DC=RAMLAN,DC=CA
CN=mS-SMS-Source-Forest	attributeSchema	CN=mS-SMS-Source-Forest,CN=Schema,CN=Configuration,DC=RAMLAN,DC=...
CN=mS-SMS-Version	attributeSchema	CN=mS-SMS-Version,CN=Schema,CN=Configuration,DC=RAMLAN,DC=CA

If you see above entries then schema is successful.

Thanks

Ram Lan
29th Oct 2020