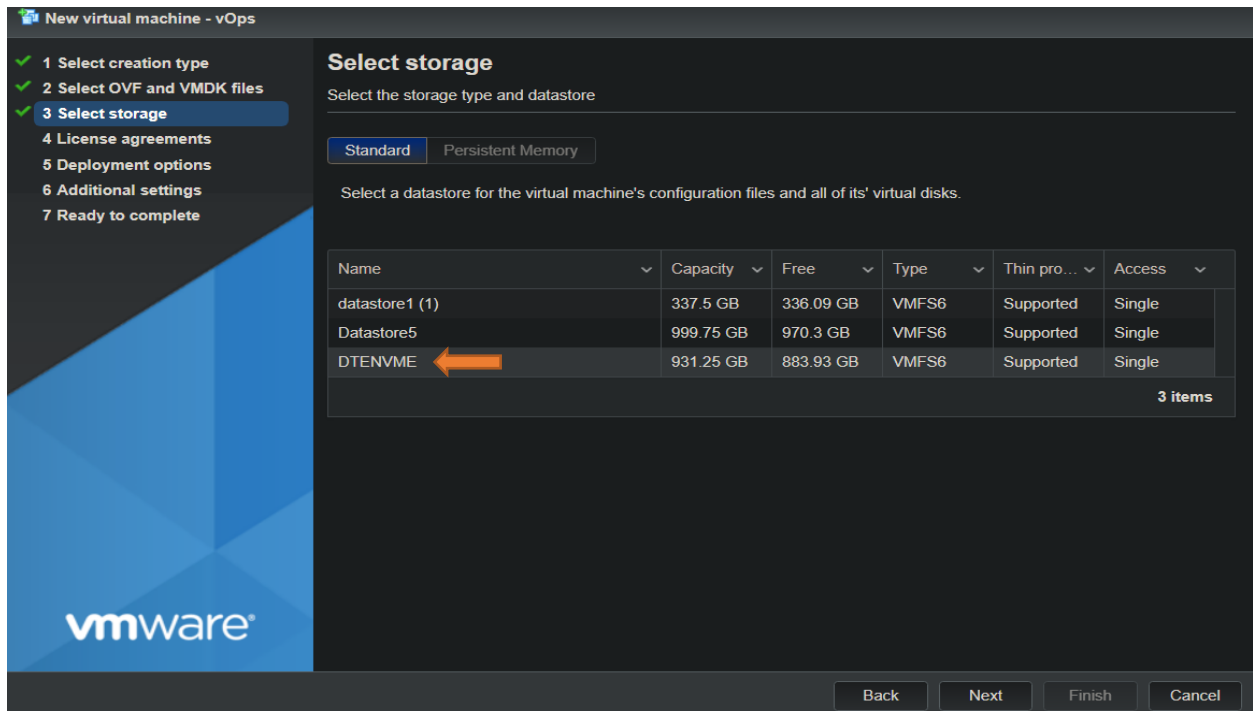
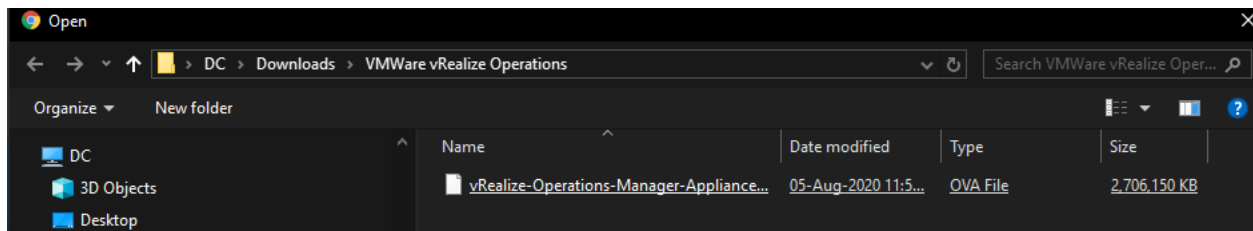
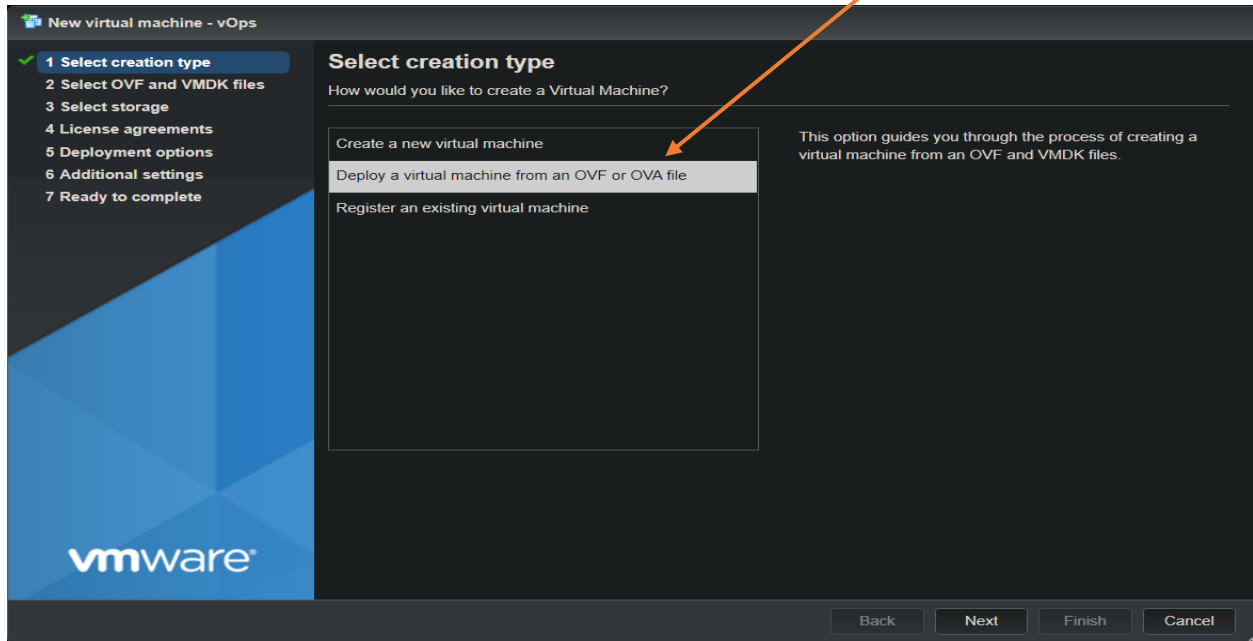


Installing vRealize Operations 8.1

Connect to Host ESXi – Click Virtual Machine – Right Click to create new VM



New virtual machine - vOps

1 Select creation type

2 Select OVF and VMDK files

3 Select storage

4 License agreements

5 Deployment options

6 Additional settings

7 Ready to complete

vmware

License agreements

Read and accept the license agreements

End User License A...

VMWARE END USER LICENSE AGREEMENT

PLEASE NOTE THAT THE TERMS OF THIS END USER LICENSE AGREEMENT SHALL GOVERN YOUR USE OF THE SOFTWARE, REGARDLESS OF WHETHER YOU ARE USING THE SOFTWARE FOR EVALUATION PURPOSES. BY DOWNLOADING, INSTALLING, OR USING THE SOFTWARE, YOU (THE INDIVIDUAL OR LEGAL ENTITY) ACCEPTS THE TERMS OF THIS AGREEMENT. If You are licensing the Software for evaluation purposes, Your use of the Software is limited to evaluation purposes only.

1. DEFINITIONS.

1.1. "Affiliate" means, with respect to a party at a given time, an entity that then is directly or indirectly owned, controlled, or managed by the party.

1.2. "Documentation" means that documentation that is generally provided to You by VMware with the Software.

1.3. "Guest Operating Systems" means instances of third-party operating systems licensed by You, installed and running on the Software.

1.4. "Intellectual Property Rights" means all worldwide intellectual property rights, including without limitation, patents, trademarks, copyrights, and trade secrets.

1.5. "License" means a license granted under Section 2.1 (General License Grant).

1.6. "License Key" means a serial number that enables You to activate and use the Software.

I agree

Back

Next

Finish

Cancel

New virtual machine - vOps

1 Select creation type

2 Select OVF and VMDK files

3 Select storage

4 License agreements

5 Deployment options

6 Additional settings

7 Ready to complete

vmware

Deployment options

Select deployment options

Network mappings

Network 1 VM Network

Deployment type

Small

Use this configuration for environments less than 3500 VMs. This deployment will require 4 vCPUs and 16GB Memory for the vApp.

Disk provisioning

☒ Thin ☐ Thick

Power on automatically

☒

Back

Next

Finish

Cancel

1 Select creation type

2 Select OVF and VMDK files

3 Select storage

4 License agreements

5 Deployment options

6 Additional settings

7 Ready to complete

Additional settings

Additional properties for the VM

Application	
Timezone setting	Canada/Eastern
IPv6	<input type="checkbox"/>
Networking Properties	
Default Gateway	192.168.0.1
Domain Name	RAMLAN.CA
Domain Search Path	
Domain Name Servers	192.168.0.2
Network 1 IP Address	192.168.0.131
Network 1 Netmask	255.255.255.0

Back

Next

Finish

Cancel

1 Select creation type

2 Select OVF and VMDK files

3 Select storage

4 License agreements

5 Deployment options

6 Additional settings

7 Ready to complete

Ready to complete

Review your settings selection before finishing the wizard

Product	vRealize Operations Manager Appliance
VM Name	vOps
Files	vRealize-Operations-Manager-Appliance-8.1.1.16522874-system.vmdk vRealize-Operations-Manager-Appliance-8.1.1.16522874-data.vmdk vRealize-Operations-Manager-Appliance-8.1.1.16522874-cloud-components.vmdk
Datastore	DTENVME
Provisioning type	Thin
Network mappings	Network 1: VM Network
Guest OS Name	Photon OS
Profile	Use this configuration for environments less than 3500 VMs. This deployment will require 4 vCPUs and 16GB Memory for the vApp.
Properties	Click to expand

Do not refresh your browser while this VM is being deployed.

Back

Next

Finish

Cancel

Task	Target	Initiator	Queued	Started	Result	Completed
Upload disk - v Realize-Operations-Manager-Appli...	vOps	root	09/08/2020 13:19:04	09/08/2020 13:19:04	<div></div>	Running... 12 %
Upload disk - v Realize-Operations-Manager-Appli...	vOps	root	09/08/2020 13:19:04	09/08/2020 13:19:04	<div></div>	Running... 43 %
Create VM	vOps		09/08/2020 13:23:04	09/08/2020 13:23:04	Completed successfully	09/08/2020 13:23:04
Upload disk - v Realize-Operations-Manager-Appli...	vOps	root	09/08/2020 13:19:04	09/08/2020 13:19:04	Completed successfully	09/08/2020 13:19:04
Import VApp	Resources	root	09/08/2020 13:23:04	09/08/2020 13:23:04	<div></div>	Running... 18 %

```
vRealize Operations Manager Appliance

To manage your appliance please browse to https://192.168.0.131

Welcome to vRealize Operations Manager Appliance

Quickstart Guide:
  1 - Open a browser to: https://192.168.0.131

  The configured appliance will be ready to use.

*Login
Set Timezone (Current:EDT)

Use Arrow Keys to navigate
and <ENTER> to select your choice.
```

is the root password (New one)

```
localhost login: root
You are required to change your password immediately (administrator enforced)
New password:
Retype new password:
root@localhost [ ~ ]#
```

Get Started

vRealize Operations Manager Initial Setup
Welcome to vRealize Operations Manager.
Choose one of the options below to get started.



EXPRESS INSTALLATION



NEW INSTALLATION



EXPAND AN EXISTING INSTALLATION

vRealize Operations Manager Initial Setup

1 Getting Started

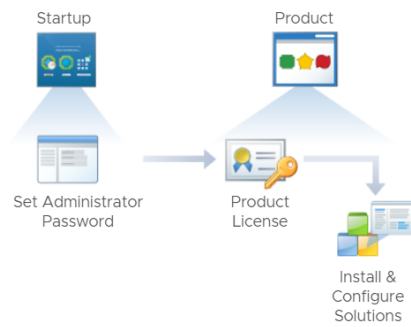
2 Set Administrator Credentials

3 Ready to Complete

New Cluster

? X

Create a new vRealize Operations Manager cluster with this node as the master node. Use this option when installing for the first time.



vRealize Operations Manager Initial Setup

1 Getting Started

2 Set Administrator Credentials

3 Ready to Complete

Set the Administrator account credentials

X

Set the Administrator account password for this deployment of vRealize Operations Manager.

User name: admin
New password:
Re-enter password:

Passwords must meet the following requirements:

vRealize Operations Manager Initial Setup

1 Getting Started

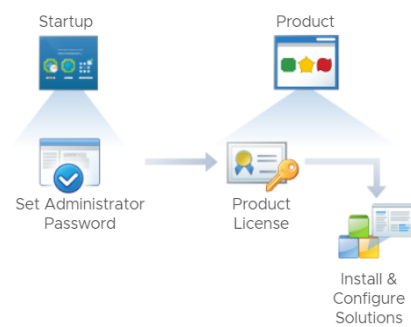
2 Set Administrator Credentials

3 Ready to Complete

Next Steps

X

Congratulations! Click Finish to start the cluster and to begin configuration of vRealize Operations Manager.



vmware®

Preparing vRealize Operations Manager for first use, it may take a few minutes...

VMware™ vRealize Operations Manager®

Local Users



admin

.....|

LOG IN

vRealize Operations Manager Configuration

1 Welcome

2 Accept EULA

3 Enter Product License Key

4 Customer Experience
Improvement Program

5 Ready to Complete

Congratulations on setting up vRealize Operations Manager.

?

Automate IT operations management, manage performance and gain visibility across physical and virtual infrastructure with vRealize Operations Manager.



vRealize Operations Manager Configuration

- 1 Welcome
- 2 Accept EULA
- 3 Enter Product License Key
- 4 Customer Experience Improvement Program
- 5 Ready to Complete

End User License Agreement

Read and agree to the End User License Agreement to continue.

VMWARE END USER LICENSE AGREEMENT

PLEASE NOTE THAT THE TERMS OF THIS END USER LICENSE AGREEMENT SHALL GOVERN YOUR USE OF THE SOFTWARE, REGARDLESS OF ANY TERMS THAT MAY APPEAR DURING THE INSTALLATION OF THE SOFTWARE.

IMPORTANT-READ CAREFULLY: BY DOWNLOADING, INSTALLING, OR USING THE SOFTWARE, YOU (THE INDIVIDUAL OR LEGAL ENTITY) AGREE TO BE BOUND BY THE TERMS OF THIS END USER LICENSE AGREEMENT ("EULA"). IF YOU DO NOT AGREE TO THE TERMS OF THIS EULA, YOU MUST NOT DOWNLOAD, INSTALL, OR USE THE SOFTWARE, AND YOU MUST DELETE OR RETURN THE UNUSED SOFTWARE TO THE VENDOR FROM WHICH YOU ACQUIRED IT WITHIN THIRTY (30) DAYS AND REQUEST A REFUND OF THE LICENSE FEE, IF ANY, THAT YOU PAID FOR THE SOFTWARE. EVALUATION LICENSE. If You are licensing the Software for evaluation purposes, Your use of the Software is only permitted in a non-production environment and for the period limited by the License Key. Notwithstanding any other provision in this EULA, an Evaluation License of the Software is provided "AS-IS" without indemnification, support or warranty of any kind, expressed or implied.

1. DEFINITIONS.

1.1. "Affiliate" means, with respect to a party at a given time, an entity that then is directly or indirectly controlled by, is under common control with, or controls that party, and here "control" means an ownership, voting or similar interest representing fifty percent (50%) or more of the total interests then outstanding of that entity.

1.2. "Documentation" means that documentation that is generally provided to You by VMware with the Software, as revised by VMware from time to time, and which may include end user manuals, operation instructions, installation guides, release notes, and on-line help files regarding the use of the

☒ I accept the terms of this agreement

CANCEL

BACK

NEXT

vRealize Operations Manager Configuration

- 1 Welcome
- 2 Accept EULA
- 3 Enter Product License Key
- 4 Customer Experience Improvement Program
- 5 Ready to Complete

Enter vRealize Operations Manager product license key

If you do not have your license key you can retrieve it from My VMware.

☐ Product Evaluation (no key required)

☒ Product Key:

[REDACTED]

VALIDATE LICENSE KEY

License Key successfully validated

License Capacity: Unlimited units of CPU Packages of Host System

License Serial:

[REDACTED]

License Type: Permanent

License Expiration: Does not expire

vRealize Operations Manager Configuration

- 1 Welcome
- 2 Accept EULA
- 3 Enter Product License Key
- 4 Customer Experience Improvement Program
- 5 Ready to Complete

Customer Experience Improvement Program

VMware's Customer Experience Improvement Program ("CEIP") provides VMware with information that enables VMware to improve its products and services, to fix problems, and to advise you on how best to deploy and use our products. As part of the CEIP, VMware collects technical information about your organization's use of VMware products and services on a regular basis in association with your organization's VMware license key(s). This information does not personally identify any individual.

Additional information regarding the data collected through CEIP and the purposes for which it is used by VMware is set forth in the Trust & Assurance Center at

<http://www.vmware.com/trustvmware/ceip.html>.

If you prefer not to participate in VMware's CEIP for this product, you should uncheck the box below. You may join or leave VMware's CEIP for this product at any time.

☒ Join the VMware Customer Experience Improvement Program

vm vRealize Operations Manager

Home

Dashboards

Alerts

Environment

Administration

🔍

↺

🔔

👤

BACK

Quick Start

Operations Overview

Optimize Performance

Optimize Capacity

Troubleshoot

Manage Applications

Hello admin

Welcome to vRealize Operations Manager

Begin monitoring your environment by adding your first Cloud Account.

ADD CLOUD ACCOUNT

You can also manage your data under Administration

Optimize Performance

Leverage self-driving operations to identify, predict and avoid performance bottlenecks.

Watch Tutorial

Optimize Capacity

Stay ahead of capacity demands with complete cost visibility, analysis and efficiency recommendations.

Watch Tutorial

Troubleshoot

Troubleshoot with active alerts on logs and metrics.

Watch Tutorial

Manage Configuration

Assess and manage vSphere compliance and object configurations.

Watch Tutorial

vRealize Operations Manager Configuration

- 1 Welcome
- 2 Accept EULA
- 3 Enter Product License Key
- 4 Customer Experience Improvement Program
- 5 Ready to Complete

Ready to Complete

Congratulations! Click Finish to begin installing and configuring solutions.



CANCEL

BACK

FINISH

vm vRealize Operations Manager

Home

Dashboards

Alerts

Environment

Administration

🔍

↺

🔔

👤

BACK

Quick Start

Operations Overview

Optimize Performance

Optimize Capacity

Troubleshoot

Manage Applications

Hello admin

Welcome to vRealize Operations Manager

Begin monitoring your environment by adding your first Cloud Account.

ADD CLOUD ACCOUNT

You can also manage your data under Administration

Optimize Performance

Leverage self-driving operations to identify, predict and avoid performance bottlenecks.

Watch Tutorial

Optimize Capacity

Stay ahead of capacity demands with complete cost visibility, analysis and efficiency recommendations.

Watch Tutorial

Troubleshoot

Troubleshoot with active alerts on logs and metrics.

Watch Tutorial

Manage Configuration

Assess and manage vSphere compliance and object configurations.

Watch Tutorial

NTP Configuration:

Configure the NTP service

To avoid **authentication issues**, all systems in your infrastructure must be **time synced**. Before configuring the SSO service, make sure the NTP service is configured in vROPS.

Go to **Administration** tab and access the **Management > Cluster Management** section. From the **Action** drop-down menu select **Network Time Protocol Settings**.


Global Network Time Protocol Settings ×

Cluster NTP Settings

Add NTP servers to be used by nodes in the cluster

NTP Server
Address:

ADD

NTP Servers	Status	
192.168.0.131		Remove

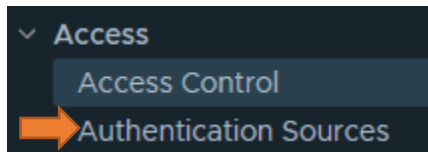
CANCEL

OK

Configure SSO Service:

Now go to **Access > Authentication Sources** section and click the **plus (+)** icon to add a source.

Administration – Access



Add Source for User and Group Import

Source Display Name:

Source Type:

Host: Port:

User Name:
Such as DOMAIN\username or admin@foo.com

Password:

Grant administrator role to vRealize Operations Manager for future configuration?
☒ Yes ☐ No

Automatically redirect to vRealize Operations single sign-on URL?
☒ Yes ☐ No

Import single sign-on user groups after adding the current source?
☒ Yes ☐ No

^ Advanced

Load Balancer Information

Host: Port:

Review and Accept Certificate

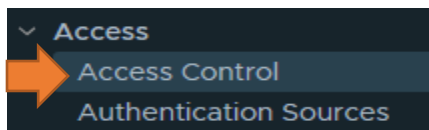
The following certificate was found on the SSO server:

Certificate Thumbprint: 5b7d4c7bc2ef207ce2766d0c68e55508835fa7ea
Issued to: C=US, CN=VC.RAMLAN.CA
Issued by: OU=VMware Engineering, O=VC.RAMLAN.CA, ST=California, C=US, DC=local, DC=vsphere, CN=CA
Expires: 8/27/22

☒ Accept this Certificate

Info

Test connection was successful



Import User Groups

1 Import User Groups

2 Roles and Objects

Import From: VC

ADD

EDIT

Search Option

Domain Name: RAMLAN.CA

Result Limit: 25

Search Prefix: vadmin

SEARCH

?

☒ Group Name

☒ VADMIN@ramlan.ca

CANCEL

NEXT

Import User Groups

1 Import User Groups

2 Roles and Objects

Select Role: Administrator

☒ Assign this role to the group.

Pick objects or object hierarchies to assign

Select Object Hierarchies

☒ Allow access to all objects in the system

Adapter Instance

Custom Groups

Applications

Custom Datacenters

Operating Systems

Remote Checks

Service Types

vRealize Operations Clusters

vSAN and Storage Devices

vSphere Hosts and Clusters

vSphere Networking

vSphere Storage

Select Object

Group has access to all objects in the system.

CANCEL

BACK

FINISH

Warning

Selected roles could lead to access to all Objects in the system.

Proceed anyway?

NO

YES

Access Control

User Accounts User Groups Roles Password Policy

ADD

...

	Group Name ↑	Description	Members	Group Type
<input type="checkbox"/>	Everyone	All Users in the system	4	Local Group
<input type="checkbox"/>	VADMIN@ramlan.ca	vCenter Admins	0	SSO SAML

With SSO configuration enabled you **don't need to log in to vROPS again** as long as you are logged into the vSphere Client.

Access Control

User Accounts User Groups Roles Password Policy

ADD

...

	User Name	First Name	Last Name
<input type="checkbox"/>	admin		
<input type="checkbox"/>	administrator...	Local	Admin
<input type="checkbox"/>	automationA...		
<input type="checkbox"/>	migrationAd...		
<input type="checkbox"/>	maintenance...		

Access Control

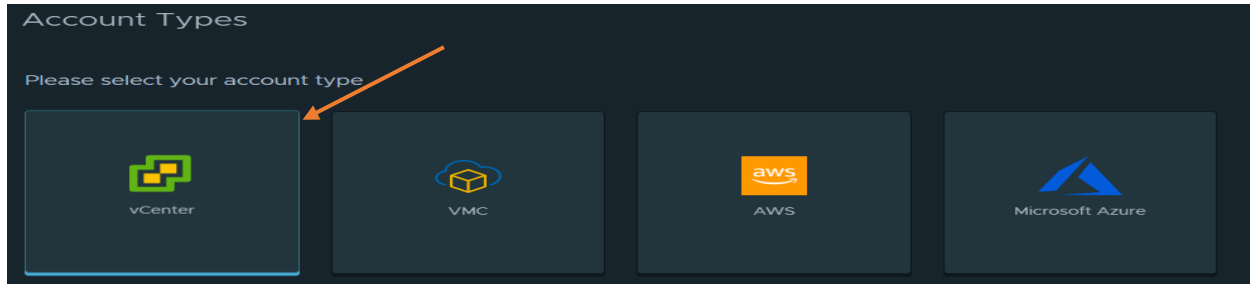
User Accounts User Groups Roles Password Policy

ADD

...

	Group Name ↑	Description	Members	Group Type
<input type="checkbox"/>	Everyone	All Users in the system	5	Local Group
<input type="checkbox"/>	VADMIN@ramlan.ca	vCenter Admins	0	SSO SAML

Administration - Solutions:



Enter vCenter details – Validate – Add. Do the same for vSAN and Service Discovery


The 'Add Cloud Account' form for vCenter includes the following sections:

- Cloud Account Information:** Fields for 'Name' (placeholder: 'Add account name') and 'Description' (placeholder: 'Add a short description for this account').
- Account Type Selection:** Three tabs: 'vCenter' (selected), 'vSAN', and 'Service Discovery'. An orange arrow points to the 'vCenter' tab.
- Connect vCenter:** Instructions to select a healthy collector and valid credentials. Fields include 'vCenter Server', 'Credential' (dropdown: '--Select--'), and 'Collector / Group' (dropdown: 'Default collector group'). A 'VALIDATE CONNECTION' button is present.
- Operational Actions:** A checkbox for 'Enable' which is checked.
- Advanced Settings:** Expandable section with settings for 'Auto Discovery' (true), 'Process Change Events' (true), and 'Enable Collecting vSphere Distributed' (false).
- Buttons:** 'ADD' and 'CANCEL' buttons at the bottom.

Cloud Accounts 1 item			
ADD ACCOUNT			
	Name	Status	Description
> ⋮	Home Lab	OK	

▼ Solutions

Cloud Accounts

 Other Accounts

Repository


Other Accounts

0 Items

ADD ACCOUNT

Account Types

Please select your account type


NSX-T Adapter

Enter the details – Validate – Add (I don't have NSX within the lab so will have to omit)

New Account

Cloud Account Information

Name

Add account name

Description

Add a short description for this account

Connect Information

Virtual IP/NSX-T Manager

Credential

Click + to add new credential

x ▼

+

Collector / Group

Default collector group

▼

VALIDATE CONNECTION

▼ Advanced Settings

vCenter ID



Here you have various management packs for install.

Repository

Native Management Packs Filter

VMware vSphere Status: 1 account Provided by: VMware Inc. Version: 8.116522885 ACTIVATED	VMware vSAN Status: 1 account Provided by: VMware Inc. Version: 8.116522881 ACTIVATED	VMware vRealize Operations Management Pack for VMware Cloud... Status: Not Configured Provided by: VMware, Inc. Version: 8.116522880 ACTIVATED	VMware vRealize Operations Management Pack for Microsoft... Status: Not Configured Provided by: VMware, Inc. Version: 8.116522893 ACTIVATED
VMware vRealize Log Insight Status: Not Configured Provided by: VMware Inc. Version: 8.116522876 ACTIVATED	VMware vRealize Compliance Pack for PCI Status: Provided by: VMware Inc. Version: 8.115636055 ACTIVATE	VMware vRealize Compliance Pack for ISO Status: Provided by: VMware Inc. Version: 8.115636055 ACTIVATE	VMware vRealize Compliance Pack for HIPAA Status: Provided by: VMware Inc. Version: 8.115636055 ACTIVATE

Repository

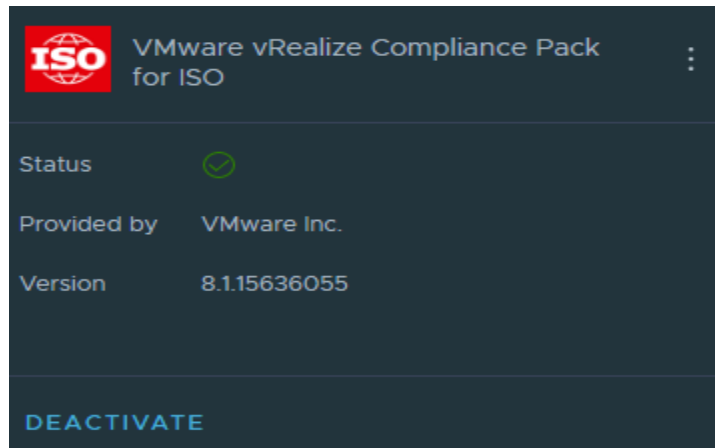
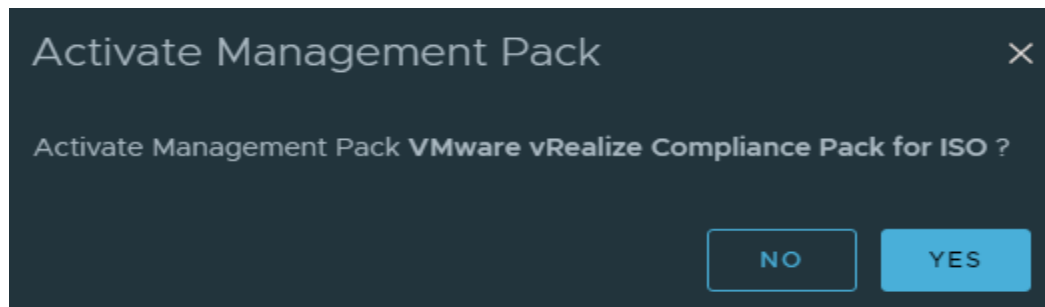
VMware vRealize Compliance Pack for FISMA Status: Provided by: VMware Inc. Version: 8.115636055 ACTIVATE	VMware vRealize Compliance Pack for DISA Status: Provided by: VMware Inc. Version: 8.115636055 ACTIVATE	VMware vRealize Compliance Pack for CIS Status: Provided by: VMware Inc. Version: 8.115636055 ACTIVATE	VMware vRealize Automation 8.x Status: Not Configured Provided by: VMware Inc. Version: 8.116522879 ACTIVATED
VMware vRealize Automation 7.x Status: Provided by: VMware Inc. Version: 8.116522878 ACTIVATE	VMware vRealize Assessments Status: Provided by: VMware Inc. Version: 8.116522877 DEACTIVATE	VMware vRealize Application Management Pack Status: Not Configured Provided by: VMware Inc. Version: 8.116522891 ACTIVATED	VMware Service Discovery Management Pack Status: 1 account Provided by: VMware Inc. Version: 8.116522894 ACTIVATED
VMware AWS Management Pack Status: Not Configured Provided by: VMware Inc. Version: 8.116522884 ACTIVATED	Operating Systems / Remote Service Monitoring Status: Provided by: VMware Inc. Version: 1.0.12389042 ACTIVATE	NSX-T Management Pack Status: Not Configured Provided by: VMware Inc. Version: 8.116522882 ACTIVATED	

Some are already activated and few others are not. I will try to activate ISO Pack.

VMware vRealize Compliance Pack for ISO

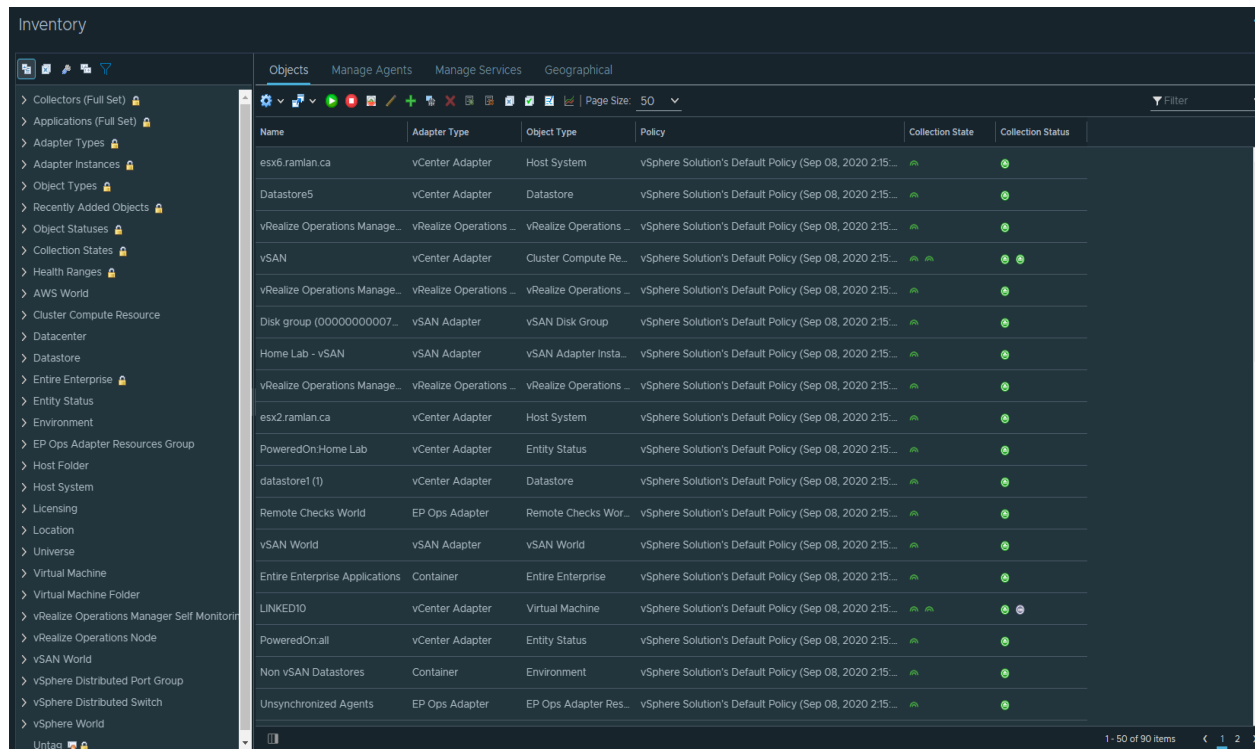
Status:
Provided by: VMware Inc.
Version: 8.115636055

ACTIVATE



Very easy to install these management packs.

Administration – Inventory



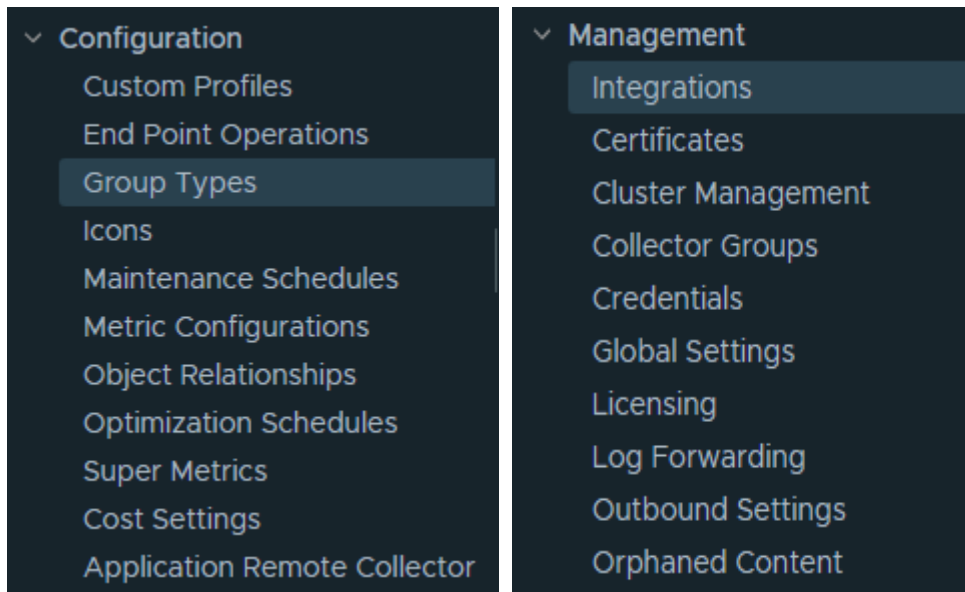
Administration – Policies

This requires more reading and testing/experimenting. I will cover this in great detail later.

Policies					
Active Policies Policy Library					
Priority	Name	Description	Assigned Groups	Affected Objects	Last Modified
D	vSphere Solution's Default Policy (Sep 08, 2020 2:15:14 PM)		0	90	2 hours ago

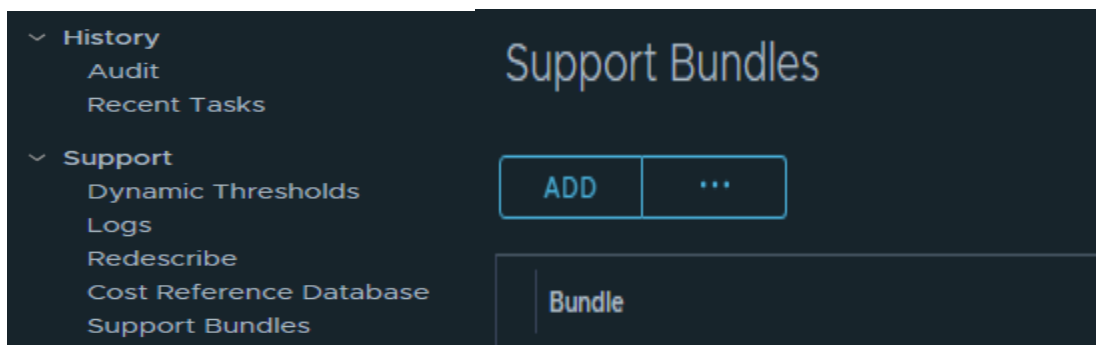
Administration – Configuration & Management

I will cover this later. Lots to read and then test the configuration.



Administration – History & Support

These are self explanatory. You can run through this at your free time.



Environment Overview

- vSphere Environment
 - vSphere Hosts and Clusters >
 - vSphere Networking >
 - vSphere Storage >
- Groups and Applications
 - Custom Groups >
 - Custom Datacenters >
 - Applications >
- Other Inventories
 - Operating Systems >
 - Remote Checks >
 - vRealize Operations Clusters >
- VMware Service Discovery
- Management Pack
 - Service Types >
- VMware vSAN
 - vSAN and Storage Devices >
- All Objects >

vSphere Hosts and Clusters

- vSphere World
 - Home Lab
 - Toronto
 - Discovered virtual machine
 - RDS
 - DTENVME
 - IIS
 - vOps
 - Nested
 - esx5.ramlan.ca
 - Datastore5
 - Others
 - Standalone
 - Lab
 - esx2.ramlan.ca
 - 2019Template
 - datastore1
 - SATAHD
 - COMP
 - SATAHD
 - MS-SQL DB
 - ESX5
 - Datastore5
 - SATAHD
 - VC.RAMLAN.CA
 - datastore1
 - vLog Insight
 - vReplication
 - datastore1
 - Datastore5
 - SATAHD

Toronto

ACTIONS

TROUBLESHOOT

vsphere Solution's Default Policy (Sep 08, 2020 2:15:14 PM)

Summary Alerts Metrics Capacity Compliance Events more...

Toronto

Cluster: 2
ESXi: 6
Virtual Machine: 10
Datastore: 6

Consumer

Virtual Machines
5 Running of 10

vCPU: 12
RAM: 40 GB
Provisioned: 2.1 TB

Provider (Usable Capacity)

ESXi Hosts
6 Running of 6

CPU: 45.61 GHz
RAM: 68.03 GB
Storage: 2.8 TB

vsphere Distributed Switch Name	Version	Total Number of Hosts	Maximum number of Ports	Used Number of Ports
DSwitch	6.6.0	3	20	6

1 - 1 of 1 items

Cluster Name	Host	Virtual Machine	Capacity Remaining	Time Remaining	VM Remaining
Lab	2	10	21.18 %	52.29 Week(s)	1
vSAN	3	0	5.28 %	52.29 Week(s)	

1 - 2 of 2 items

Datastore Name	Capacity	Virtual machine	Capacity Remaining	Time Remaining
DTENVME	931.25 GB	4	91.36 %	52.29 Week(s)

Alerts – It is self explanatory. Useful when the configuration are incorrect. Here is an example

The image displays two screenshots of the VMware vSphere Alerts interface, showing triggered alerts and their details.

Top Screenshot: DSwitch Alert

- Alert:** The Distributed Switch configuration is incorrect.
- Status:** Active
- Started on:** 2:43 PM
- Recommendations:** Verify that at least two NICs on each host is connected to the Distributed Switch.
- Symptoms:**
 - DSwitch has symptom Host without redundant physical connectivity to the Distributed Switch - Host:esx3.ramlan.ca. Number of Attached pNICs 1 < Threshold 2.
 - DSwitch has symptom Host without redundant physical connectivity to the Distributed Switch - Host:esx4.ramlan.ca. Number of Attached pNICs 1 < Threshold 2.
 - DSwitch has symptom Host without redundant physical connectivity to the Distributed Switch - Host:esx1.ramlan.ca. Number of Attached pNICs 1 < Threshold 2.

Bottom Screenshot: Lab Alert

- Alert:** Cluster has unbalanced workload.
- Status:** Active
- Started on:** 2:43 PM
- Recommendations:** Set DRS to fully automated if it is not. If it is already fully automated, make DRS more aggressive. **SET DRS AUTOMATION**
- Symptoms:**
 - Lab has symptom Cluster DRS settings are tunable to improve cluster workload balance. DRS Tunable "true" = "true".
 - Lab does not have symptom Cluster CPU "demand" workload at warning level. 39.2 %.
 - Lab has symptom At least one host in the cluster has critically high memory "demand" workload. Highest Host Workload (%) 112.581 >= Threshold (%) 95.
 - Lab has symptom Cluster DRS settings are tunable to improve cluster workload balance. DRS Tunable "true" = "true".
 - Lab does not have symptom Cluster memory "demand" workload at warning level. 78.346 %.

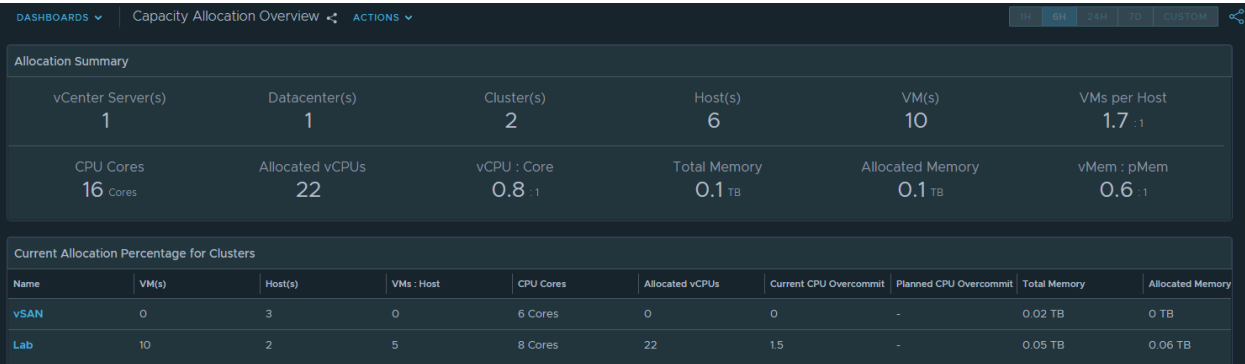
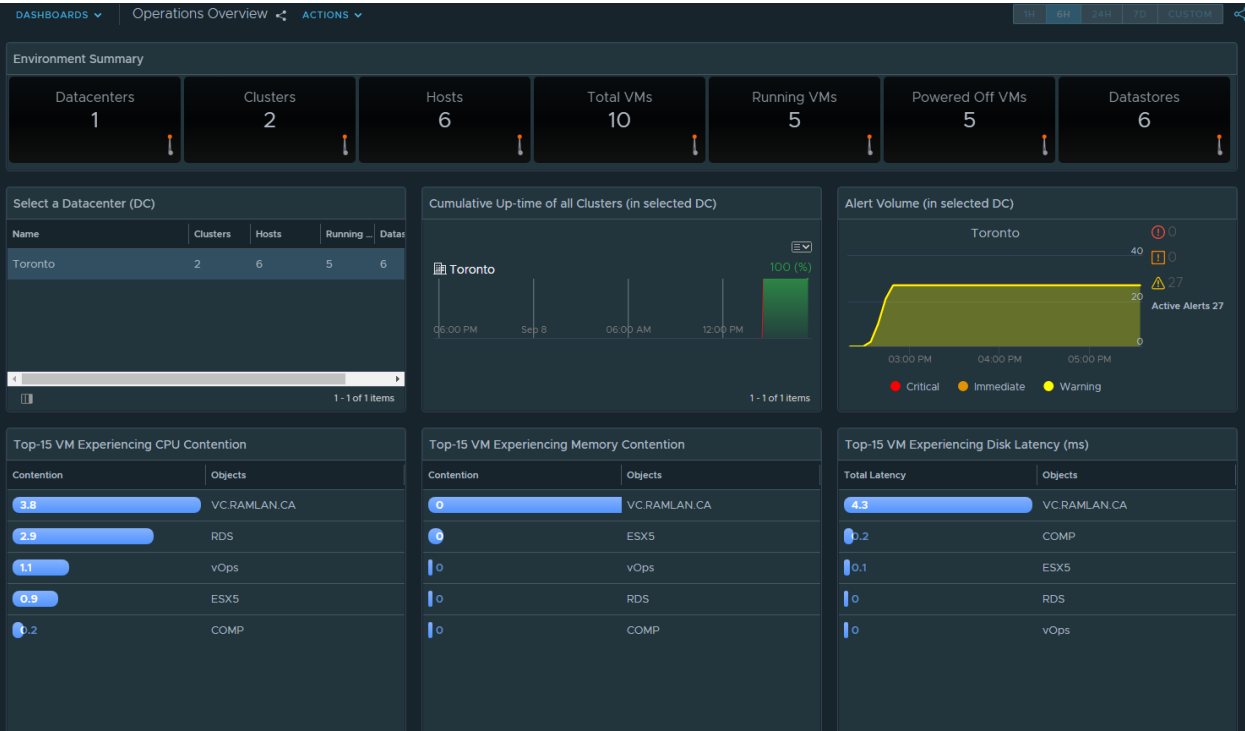
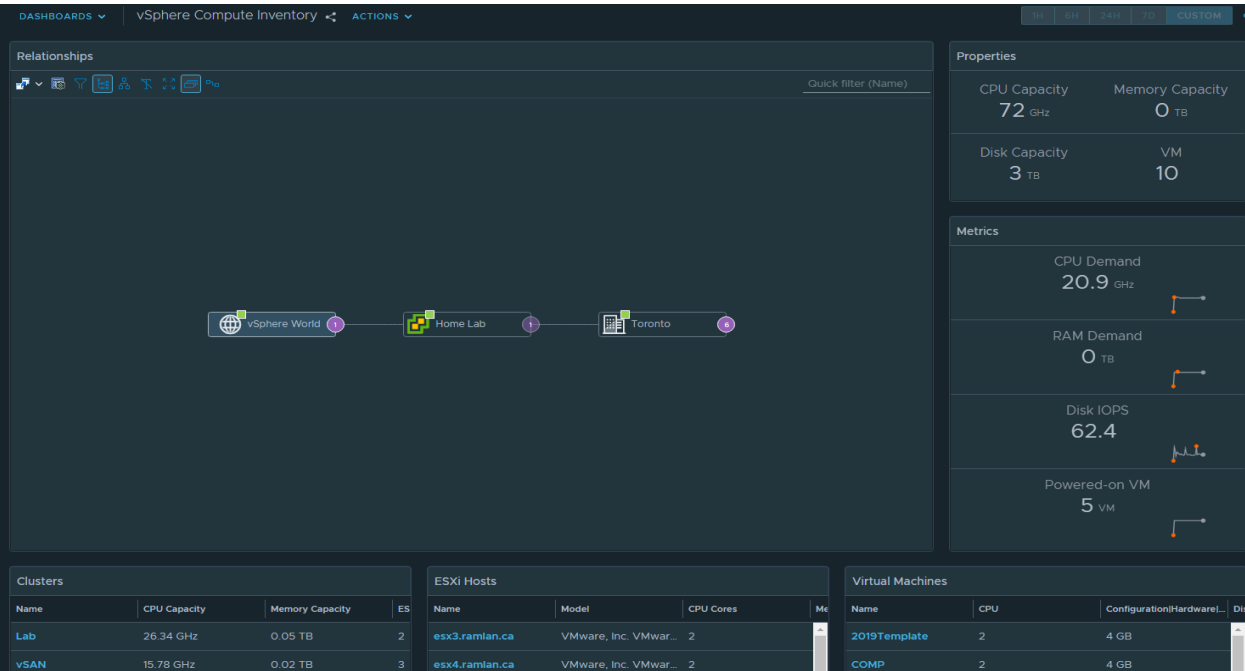
Dashboards:

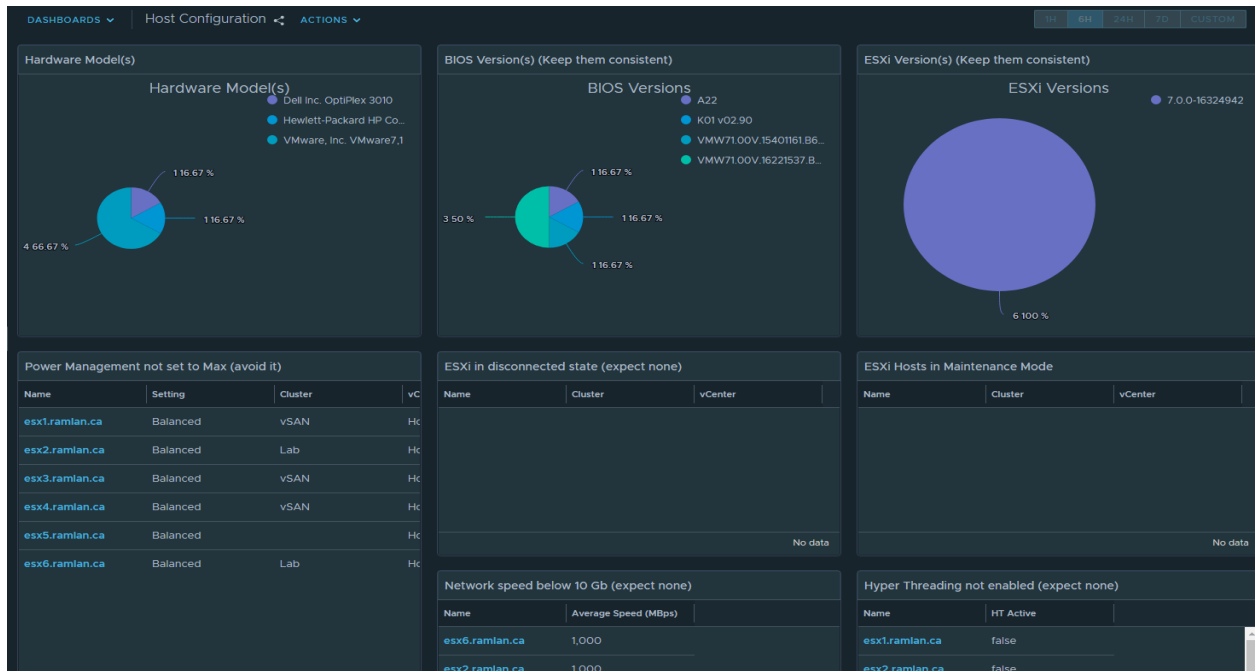
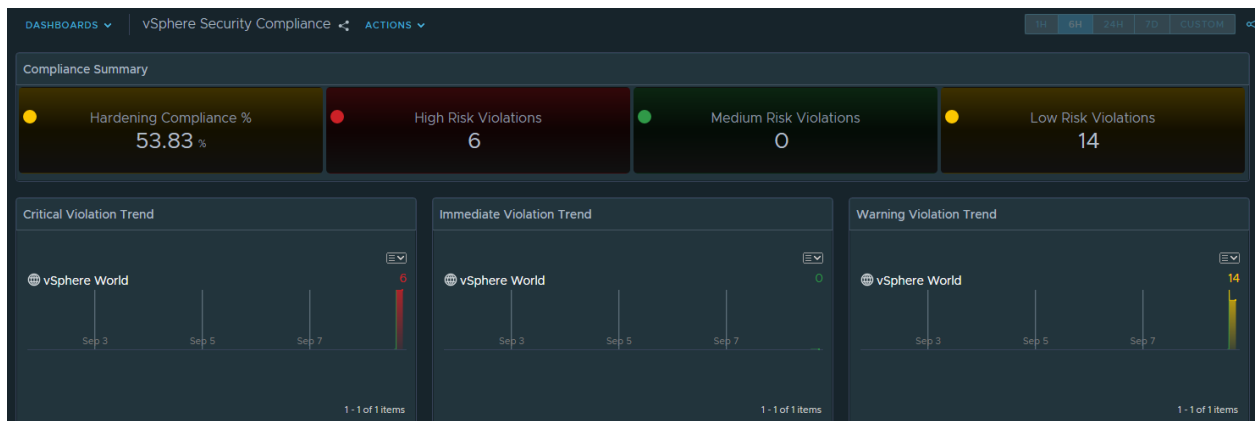
Here are few examples. You will have to check them out within your infrastructure.

The image shows the VMware vSphere Dashboards interface, specifically the 'Getting Started' page. The page displays a welcome message and a list of dashboard categories:

- Inventory**
- Operations**
- Capacity and Utilization**
- Performance Troubleshooting**
- Configuration and Compliance**

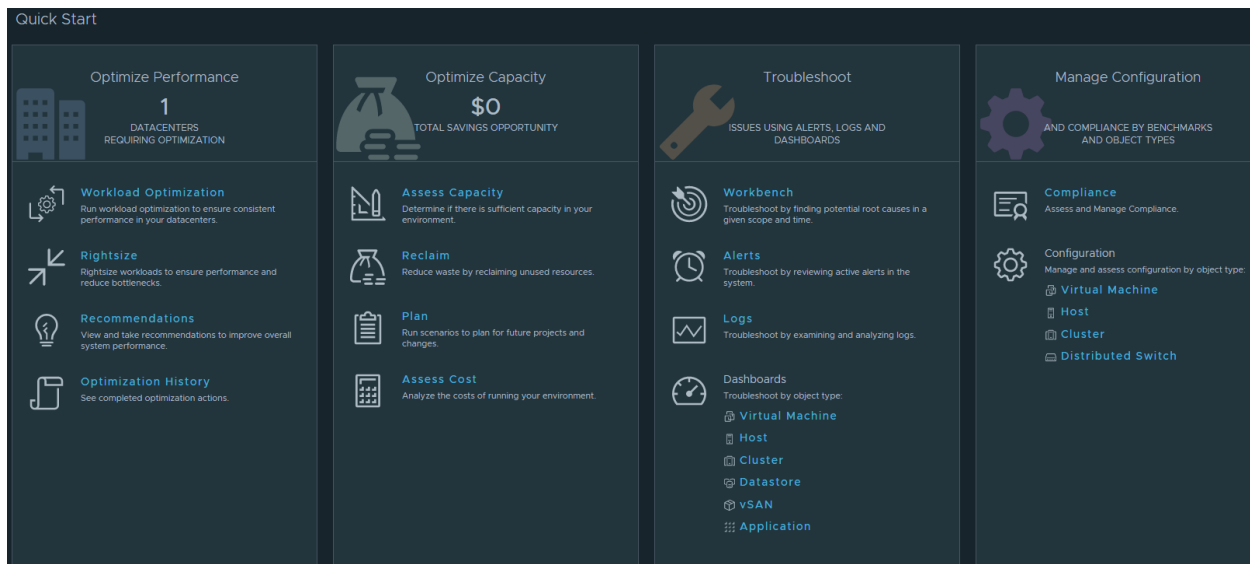
Each category is represented by an icon and a brief description. The 'Inventory' category is highlighted with a blue underline.





Home:





DASHBOARDS ▾ | Assess Cost ⚙️ | ACTIONS ▾

Assess Cost

Total Inventory and Costs

Datacenters	vSphere Hosts	vSphere Clusters	CPU Sockets	Total Cost of Ownership	Potential Cost Saving Opportun...
1	6	2	9	233 \$/Month	0 \$/Month

Datacenter Resource Cost

Name	VMs	Hosts	Clusters	Total Cost of Clusters	Datastores	Total Cost of Datastores	Monthly Direct Cost	Reclaimable vCPUs	Reclaimable Memory	Reclaimable Disk Space
Toronto	10	6	2	233.3 \$/Month	6	0 \$/Month	0 \$/Month	0 vCPUs	0 KB	11.71 GB
Total	10	6	2	233.3 \$/Month	6	0 \$/Month	0 \$/Month	0 vCPUs	0 KB	11.71 GB

Top Most Expensive Clusters

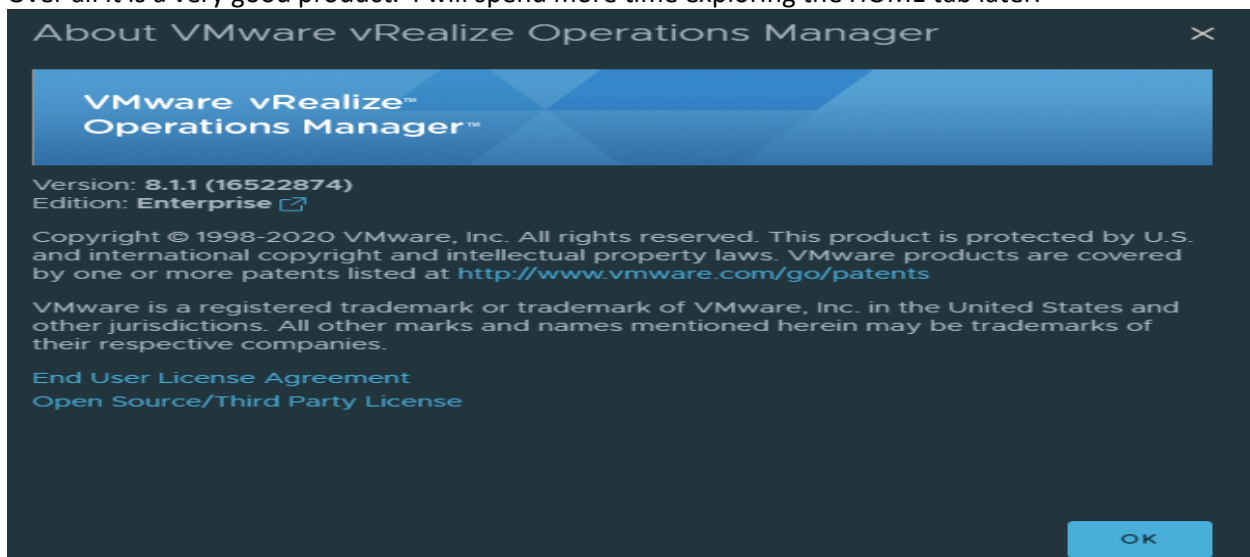
Monthly Cluster Total Cost	Objects	Hosts	Datastores	Virtual Machines
116.6	vSAN	3	1	0
77.8	Lab	2	5	10

Top Least Expensive Clusters

Monthly Cluster Total Cost	Objects	Hosts	Datastores	Virtual Machines
77.8	Lab	2	5	10
116.6	vSAN	3	1	0

Please check HOME tab configuration and do the needful. I will not go into great details as it varies from company to company and their infrastructure.

Over all it is a very good product. I will spend more time exploring the HOME tab later.



Thanks
Ram Lan
8th Sep 2020