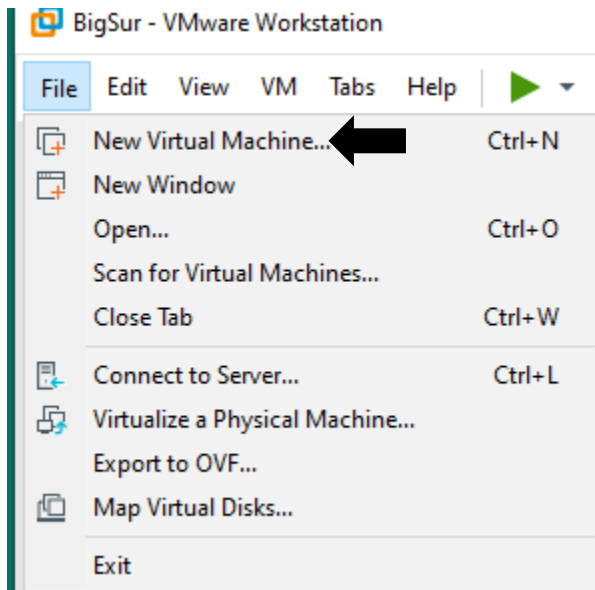


# How to install VMWare vSphere 7

In this post, I will show you how to install vSphere 7 on VMWare Workstation 15 and complete initial configuration. I will be allocating 6GB memory and 80GB hard disk. Will use remaining hard disk space for vCenter Server later.



New Virtual Machine Wizard



**Guest Operating System Installation**

A virtual machine is like a physical computer; it needs an operating system. How will you install the guest operating system?

Install from:

 Installer disc:

No drives available

 Installer disc image file (iso):

Browse...

 I will install the operating system later.

The virtual machine will be created with a blank hard disk.

Help

&lt; Back

Next &gt;

Cancel

**Select a Guest Operating System**

Which operating system will be installed on this virtual machine?

Guest operating system

- Microsoft Windows
- Linux
- Apple Mac OS X
- VMware ESX
- Other

Version

VMware ESXi 6.x

Help

&lt; Back

Next &gt;

Cancel

**Name the Virtual Machine**

What name would you like to use for this virtual machine?

Virtual machine name:

VMware ESXi 7

Location:

C:\Users\deepak\Documents\Virtual Machines\VMware ESXi 7

Browse...

The default location can be changed at Edit &gt; Preferences.

&lt; Back

Next &gt;

Cancel

**Specify Disk Capacity**

How large do you want this disk to be?

The virtual machine's hard disk is stored as one or more files on the host computer's physical disk. These file(s) start small and become larger as you add applications, files, and data to your virtual machine.

Maximum disk size (GB): 80.0

Recommended size for VMware ESXi 6.x: 40 GB

- Store virtual disk as a single file
- Split virtual disk into multiple files

Splitting the disk makes it easier to move the virtual machine to another computer but may reduce performance with very large disks.

Help

&lt; Back

Next &gt;

Cancel

**Ready to Create Virtual Machine**

Click Finish to create the virtual machine. Then you can install VMware ESXi 6.x.

The virtual machine will be created with the following settings:

Name:	VMware ESXi 7
Location:	C:\Users\deepak\Documents\Virtual Machines\VMwar...
Version:	Workstation 15.x
Operating System:	VMware ESXi 6.x
Hard Disk:	80 GB
Memory:	4096 MB
Network Adapter:	NAT
Other Devices:	2 CPU cores, CD/DVD, USB Controller

Customize Hardware...

< Back

Finish

Cancel

## VMware ESXi 7 - VMware Workstation

File Edit View VM Tabs Help

Library

Type here to search

- My Computer
  - BigSur
  - VMware ESXi 7
- Shared VMs

Home BigSur VMware ESXi 7

## VMware ESXi 7

▶ Power on this virtual machine

🔗 Edit virtual machine settings

### Devices

Memory	4 GB
Processors	2
Hard Disk (SCSI)	80 GB
CD/DVD (IDE)	Auto detect
Network Adapter	NAT
USB Controller	Present
Display	Auto detect

### Description

Type here to enter a description of this virtual machine.

Hardware Options

Device	Summary
Memory	6.0 GB
Processors	2
Hard Disk (SCSI)	80 GB
CD/DVD (IDE)	Auto detect
Network Adapter	NAT
USB Controller	Present
Display	Auto detect

Device status

Connected

Connect at power on

Connection

Use physical drive:

Auto detect

Use ISO image file:

C:\Users\deepak\Downloads\1 VMware-VM

VMware ESXi 7 - VMware Workstation

File Edit View VM Tabs Help

Library

Type here to search

- My Computer
  - BigSur
  - VMware ESXi 7
- Shared VMs

Home BigSur VMware ESXi 7

## VMware ESXi 7

[Power on this virtual machine](#)

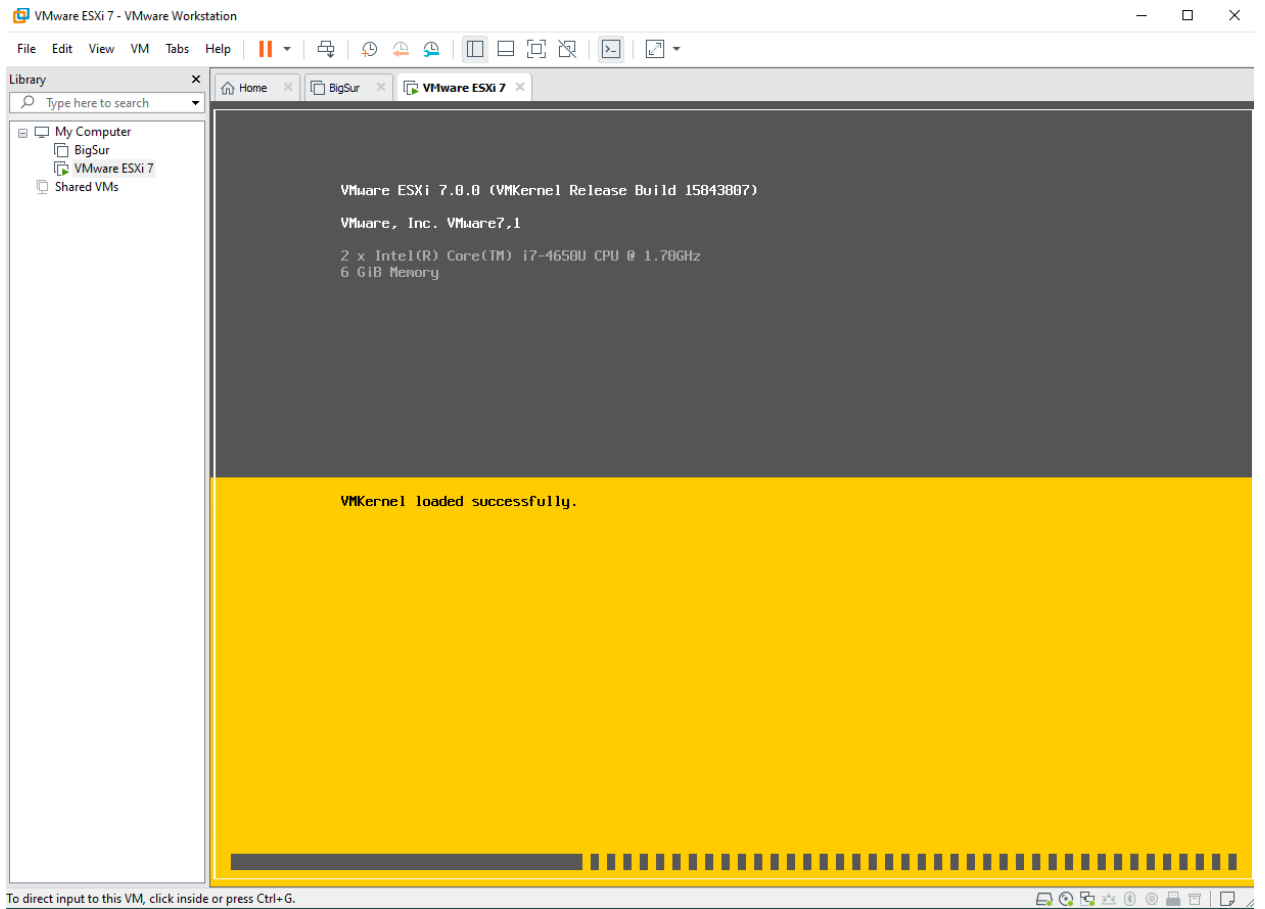
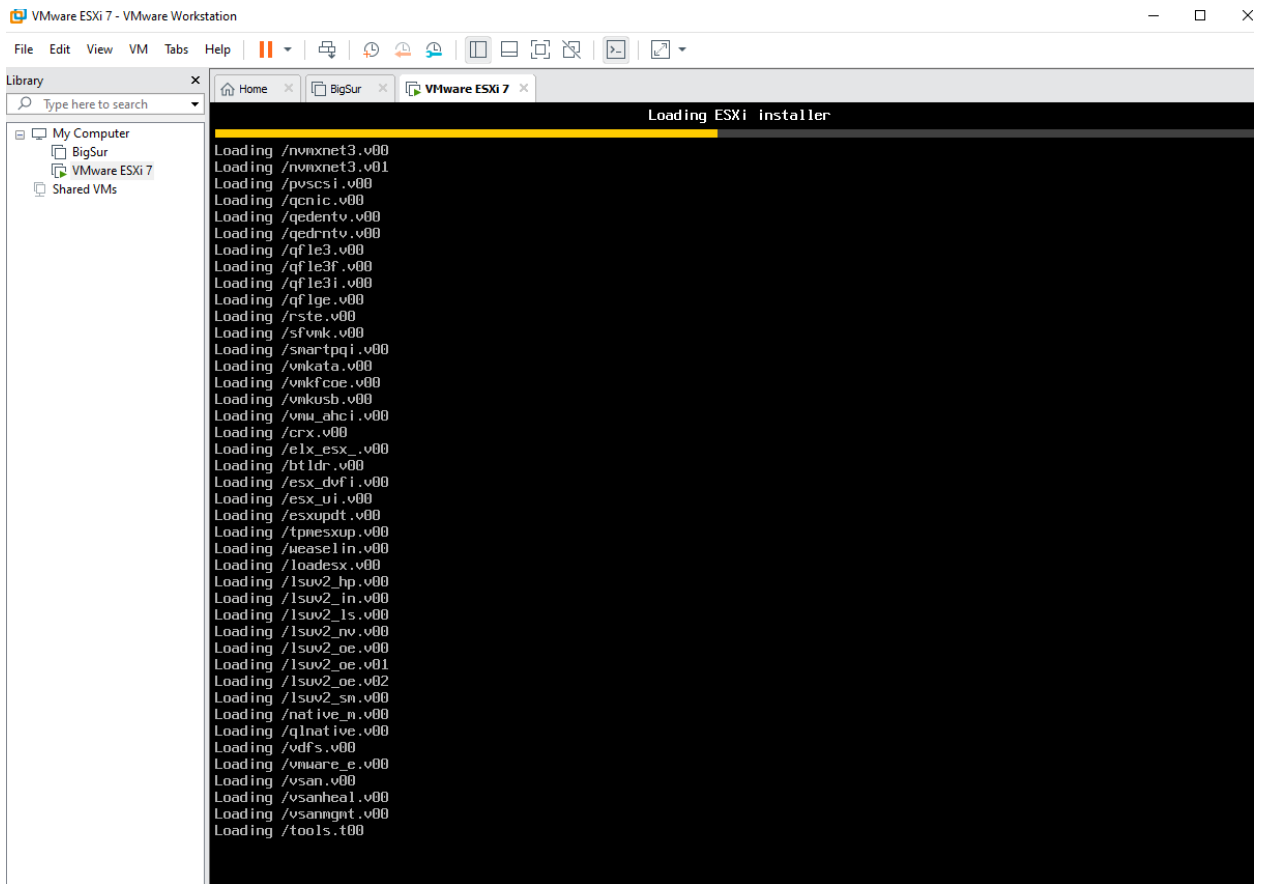
[Edit virtual machine settings](#)

Devices

Memory	4 GB
Processors	2
Hard Disk (SCSI)	80 GB
CD/DVD (IDE)	Auto detect
Network Adapter	NAT
USB Controller	Present
Display	Auto detect

Description

Type here to enter a description of this virtual machine.



Welcome to the VMware ESXi 7.0.0 Installation

VMware ESXi 7.0.0 installs on most systems but only systems on VMware's Compatibility Guide are supported.

Consult the VMware Compatibility Guide at:  
<http://www.vmware.com/resources/compatibility>

Select the operation to perform.

(Esc) Cancel

(Enter) Continue



End User License Agreement (EULA)

VMWARE END USER LICENSE AGREEMENT

PLEASE NOTE THAT THE TERMS OF THIS END USER LICENSE AGREEMENT SHALL GOVERN YOUR USE OF THE SOFTWARE, REGARDLESS OF ANY TERMS THAT MAY APPEAR DURING THE INSTALLATION OF THE SOFTWARE.

IMPORTANT-READ CAREFULLY: BY DOWNLOADING, INSTALLING, OR USING THE SOFTWARE, YOU (THE INDIVIDUAL OR LEGAL ENTITY) AGREE TO BE BOUND BY THE TERMS OF THIS END USER LICENSE AGREEMENT ("EULA"). IF YOU DO NOT AGREE TO THE TERMS OF THIS EULA, YOU MUST NOT DOWNLOAD, INSTALL, OR USE THE SOFTWARE, AND YOU MUST DELETE OR RETURN THE UNUSED SOFTWARE TO THE VENDOR FROM WHICH YOU ACQUIRED IT WITHIN THIRTY (30) DAYS AND REQUEST A REFUND OF THE LICENSE FEE, IF ANY, THAT

Use the arrow keys to scroll the EULA text

(ESC) Do not Accept

(F11) Accept and Continue



Select a Disk to Install or Upgrade

(any existing VMFS-3 will be automatically upgraded to VMFS-5)

\* Contains a VMFS partition

# Claimed by VMware vSAN

Storage Device	Capacity
-----	
Local:	
VMware, VMware Virtual S (mpx.vmhba0:C0:T0:L0)	80.00 GiB
Remote:	
(none)	

(Esc) Cancel

(F1) Details

(F5) Refresh




(Enter) Continue

Please select a keyboard layout

- Swiss French
- Swiss German
- Turkish
- US Default**
- US Dvorak
- Ukrainian
- United Kingdom

Use the arrow keys to scroll.

(Esc) Cancel    (F9) Back  (Enter) Continue

Enter a root password

Root password: \*\*\*\*\*  
Confirm password: \*\*\*\*\*


Passwords match.

(Esc) Cancel    (F9) Back    (Enter) Continue 

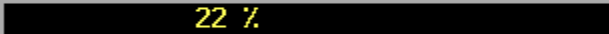
Confirm Install

The installer is configured to **install** ESXi 7.0.0 on:  
mpx.vmhba0:C0:T0:L0.

Warning: This disk will be repartitioned.

(Esc) Cancel    (F9) Back    (F11) Install 

Installing ESXi 7.0.0

 22 %



## Installation Complete

ESXi 7.0.0 has been installed successfully.

ESXi 7.0.0 will operate in evaluation mode for 60 days.  
To use ESXi 7.0.0 after the evaluation period, you must register for a VMware product license.

To administer your server, navigate to the server's hostname or IP address from your web browser or use the Direct Control User Interface.

Remove the installation media before rebooting.

Reboot the server to start using ESXi 7.0.0.

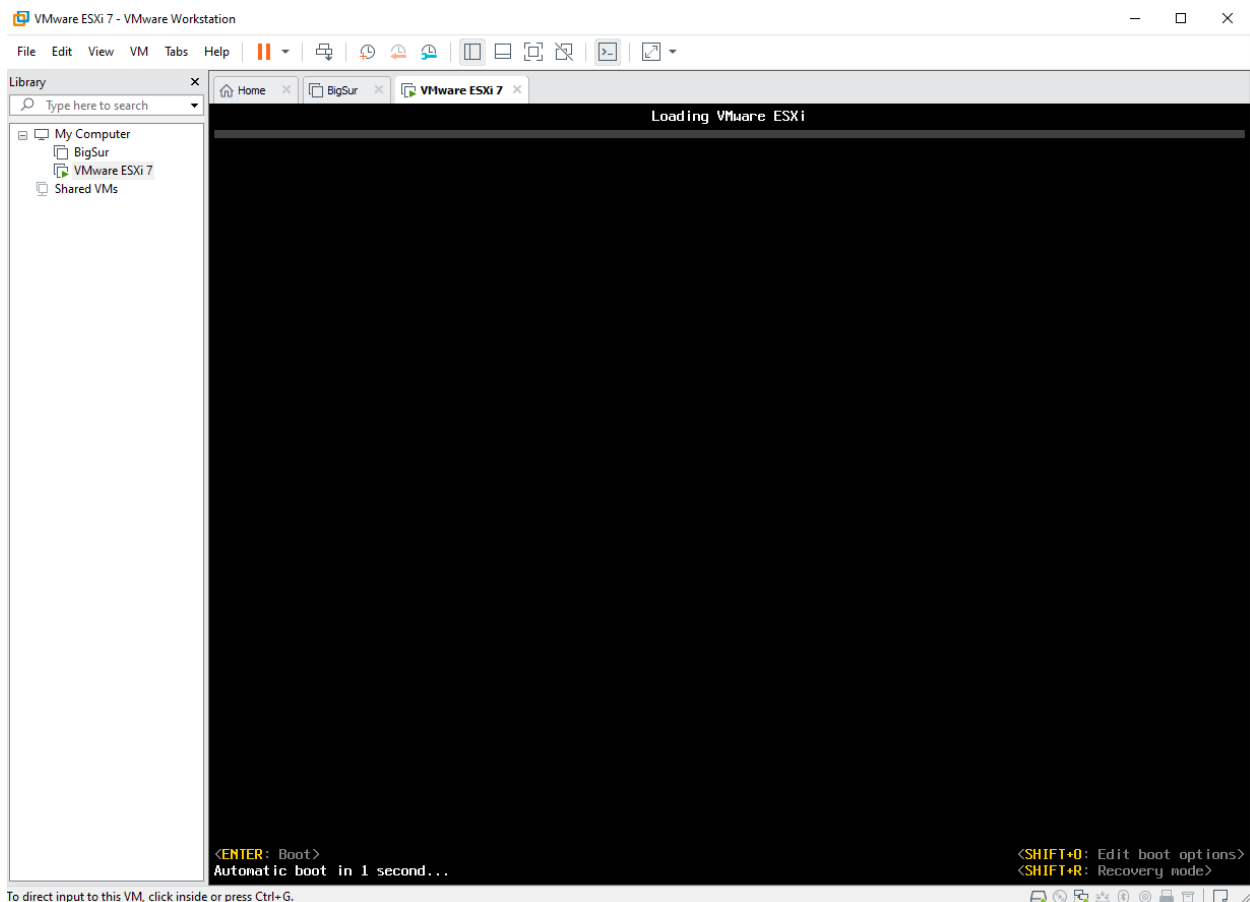
(Enter) Reboot

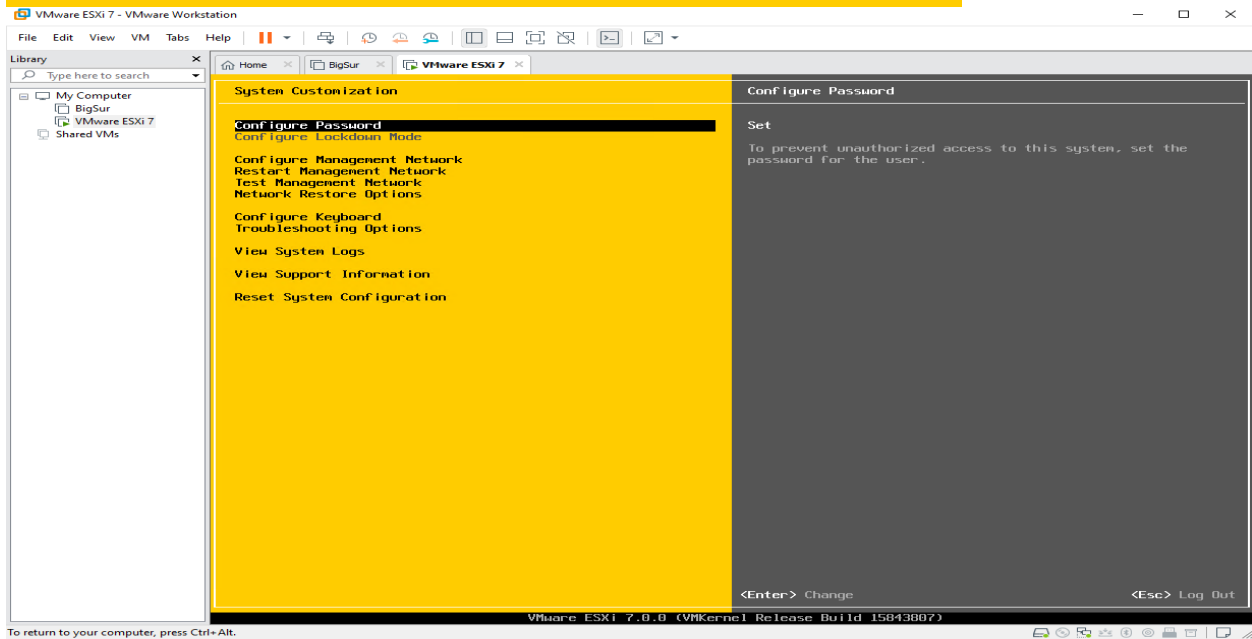
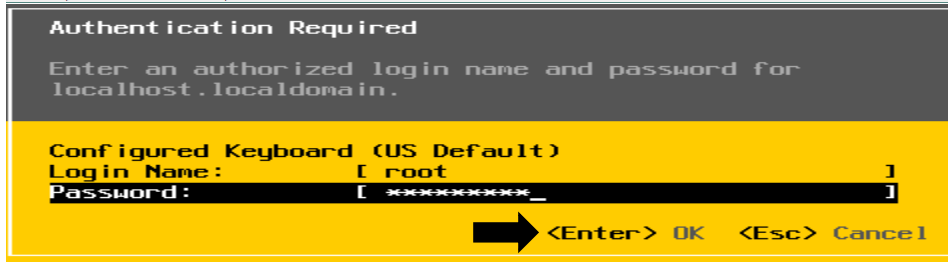
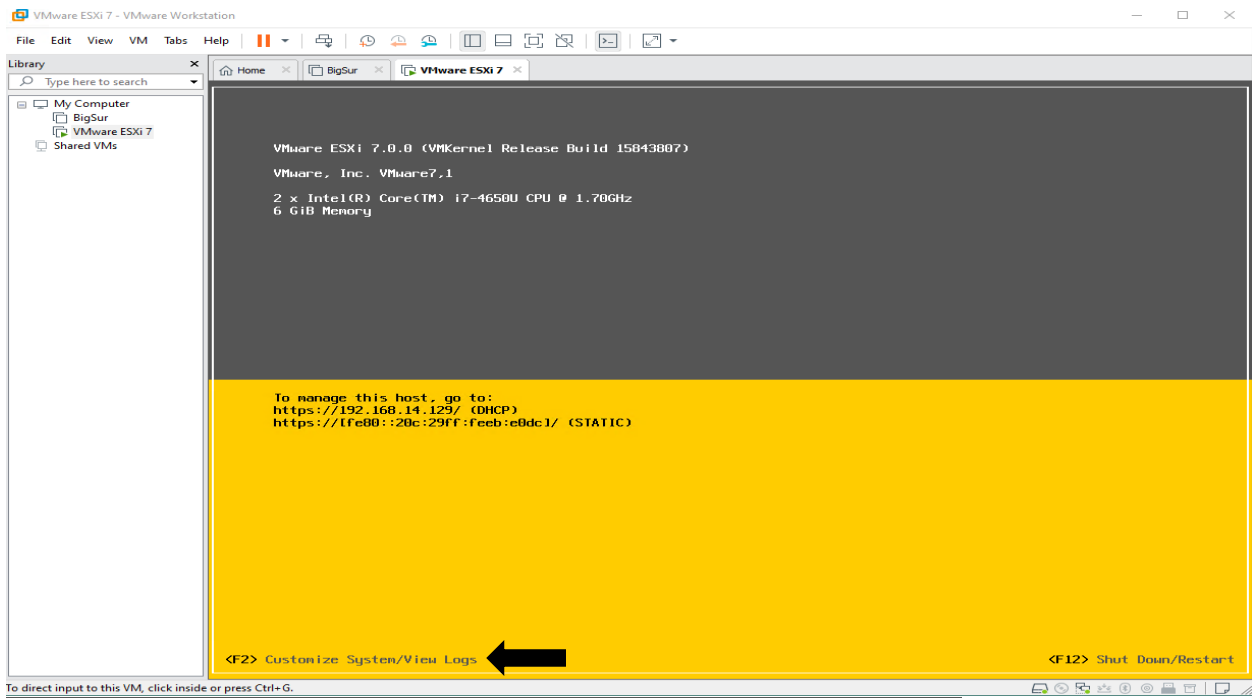


## Rebooting Server

The server will shut down and reboot.

The process will take a short time to complete.





This concludes basic setup of vSphere 7. In the next blog, I will complete Management Interface configuration and others.

Thanks

Ram Lan  
 20<sup>th</sup> July 2020