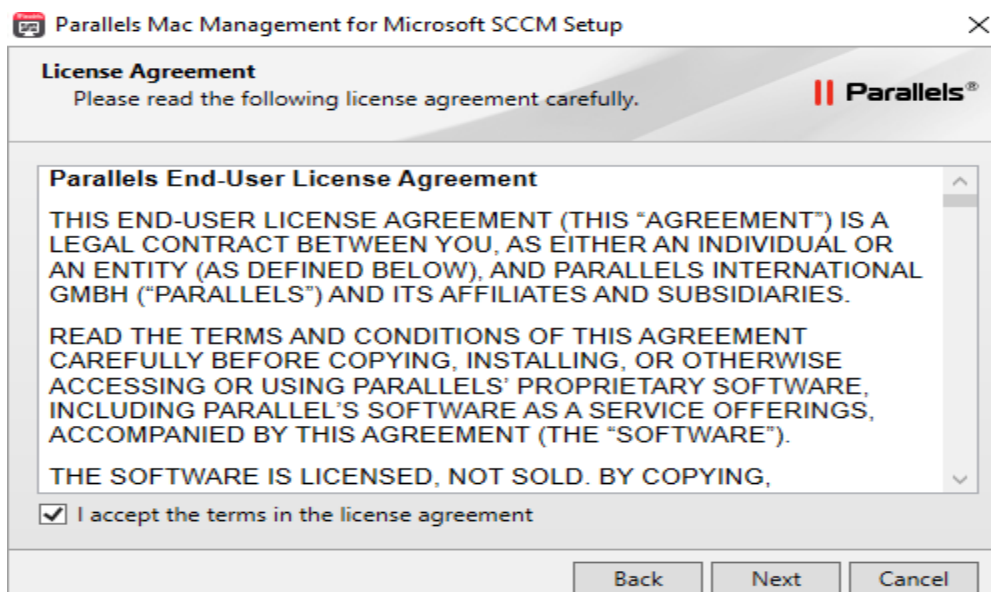
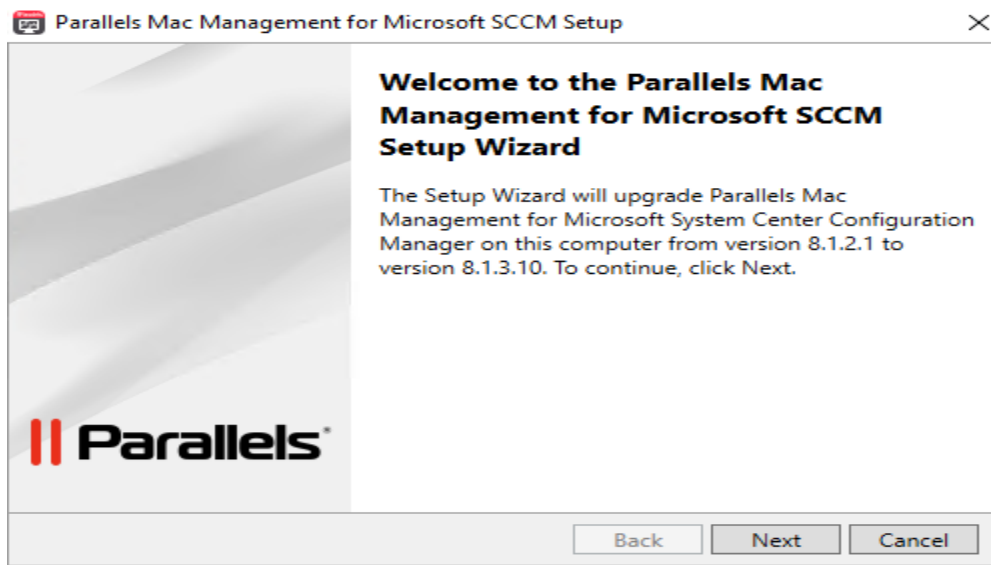
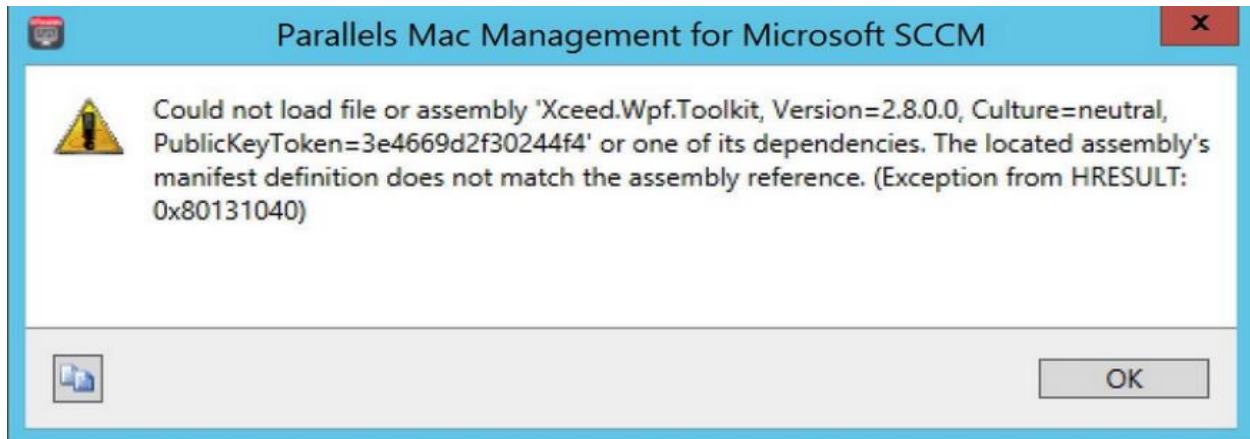
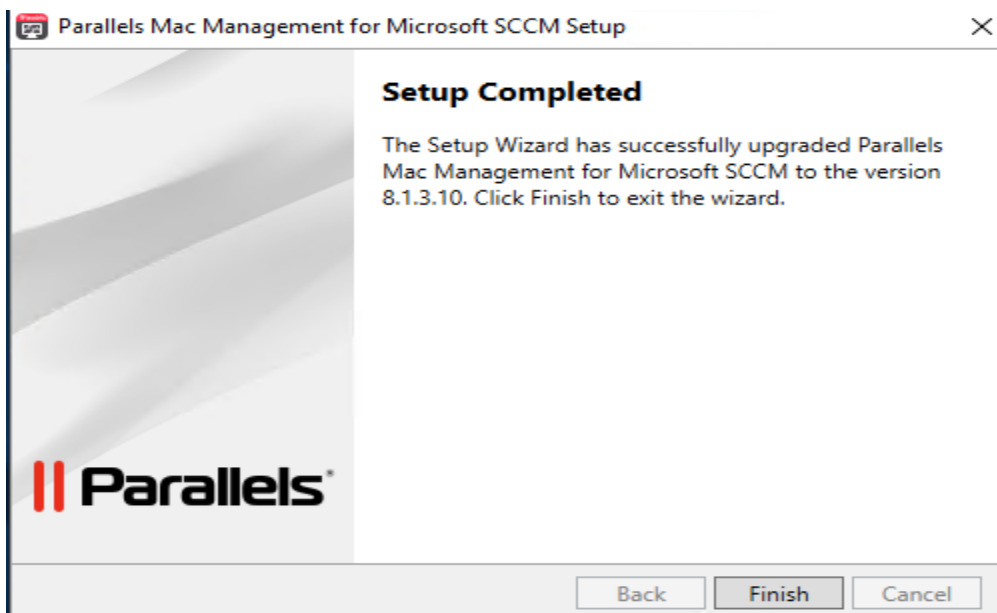
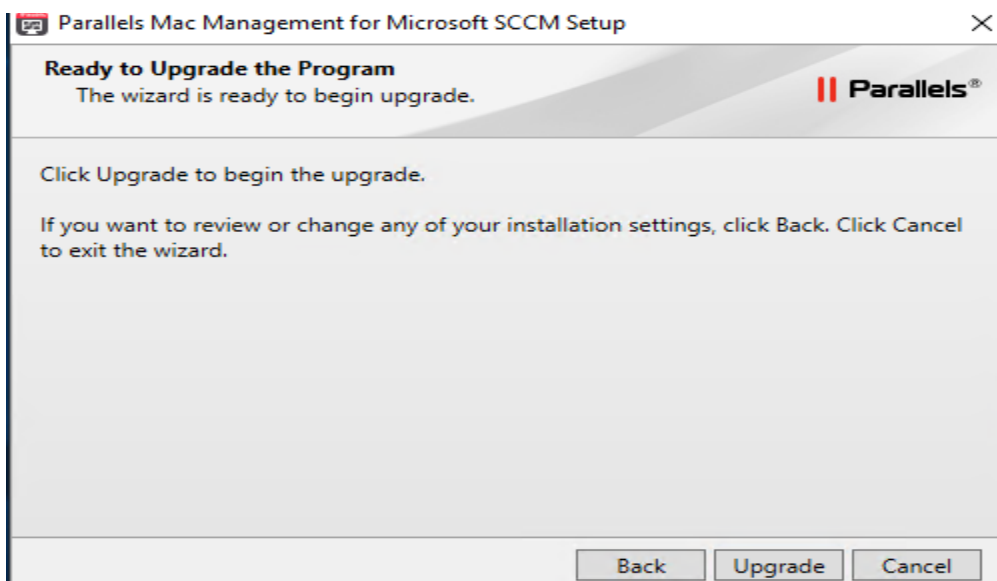
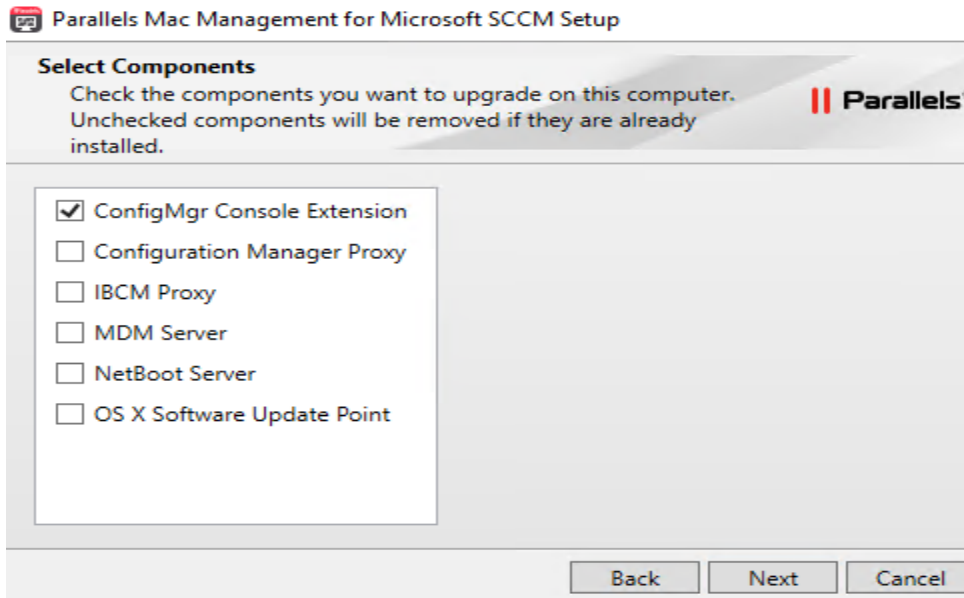


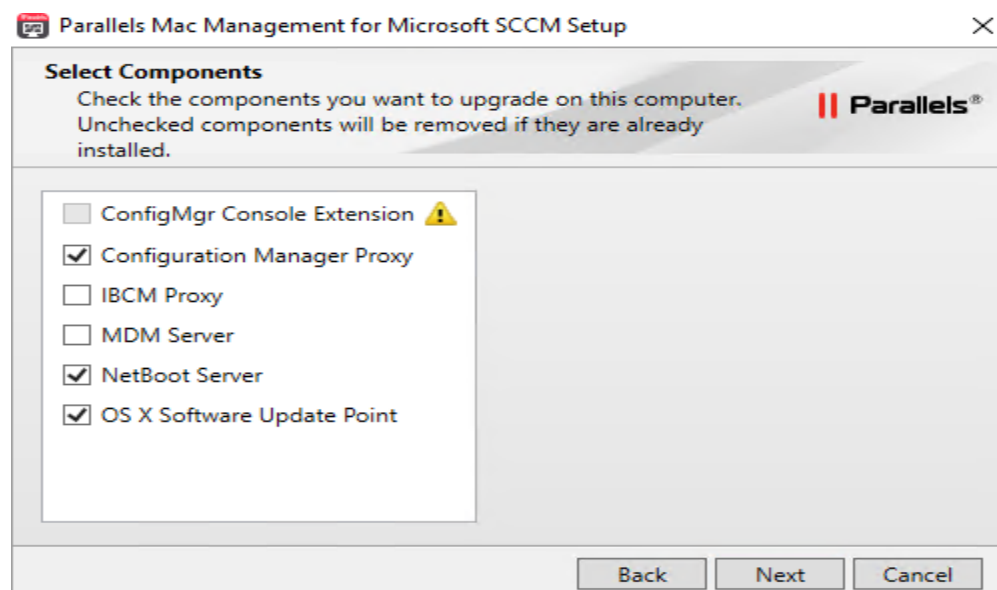
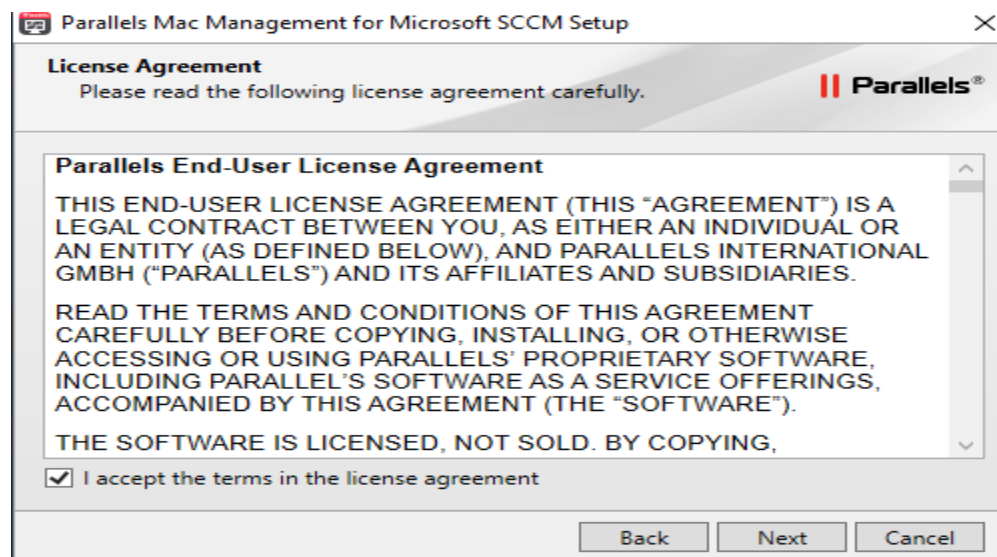
How to upgrade Parallels Mac Management v8.1.2.1 to v8.1.3.10

I was getting below error when, I tried to open License properties within CB2002 console. As per PMM, I need to upgrade the version to 8.1.3.10. The upgrade process is simple. Run the latest version exe and click next to complete the upgrade.





Repeat the same on PAR server (the proxy) as well which is running other services.



Ready to Upgrade the Program

The wizard is ready to begin upgrade.



Click Upgrade to begin the upgrade.

If you want to review or change any of your installation settings, click Back. Click Cancel to exit the wizard.

Back

Upgrade

Cancel

Setup Completed

The Setup Wizard has successfully upgraded Parallels Mac Management for Microsoft SCCM to the version 8.1.3.10. Click Finish to exit the wizard.



Back

Finish

Cancel

SMS Provider location

Specify the server where the SMS Provider is installed.

Local server - the SMS Provider is not installed on the local computer

Remote server (enter the hostname or IP address)

CB.RAMLAN.CA

The SMS Provider is a WMI provider that allows read and write access to the Configuration Manager site database. The SMS Provider can be installed on a dedicated server or on a local computer.



Next >

Cancel

Parallels Configuration Manager Proxy Configuration Wizard

Configuration Manager Proxy service account

Specify the service account for the Configuration Manager Proxy. The account you choose must have read/write access to the SMS Provider.

Local System account

This account:

Password:

i The Configuration Manager Proxy service enables Mac Clients to communicate with the Configuration Manager. The LocalSystem account is normally used when the SMS Provider is located on the same server as the Proxy service. A specific account may also be used if you want to manage the Configuration Manager Proxy service access rights.

Parallels®

Parallels Configuration Manager Proxy Configuration Wizard

Prerequisites Check

Passed: 16 Failed: 0 Warnings: 0

✓ Current user "RAMLAN\Administrator" must have local administrator rights.

✓ Current user "RAMLAN\Administrator" must have Access, Launch, and Activation permissions for SMS WMI Provider on host "CB.RAMLAN.CA".

✓ Current user "RAMLAN\Administrator" must have full administrative rights in the Configuration Manager (domain: "ramlan.ca").

✓ "ParallelsServices" Active Directory container must exist, or current user "RAMLAN\Administrator" must have Read and Create All Child Objects permissions on the "System" Active Directory container (domain: "ramlan.ca").

✓ Current user "RAMLAN\Administrator" must have Read and Create All Child Objects permissions on the "ParallelsServices" Active Directory container (domain: "ramlan.ca").

✓ Current user "RAMLAN\Administrator" must have Full Control permissions on the "PmaConfigMgrProxy-TOR" Active Directory container (domain: "ramlan.ca").

Parallels®

Parallels Configuration Manager Proxy Configuration Wizard

Parallels Client certificate management settings

Specify which connection Parallels Proxy and Mac clients use to communicate with distribution points and management points

HTTP

! There are no management points and no distribution points on this site that allow HTTP connection.

HTTPS

Certificate Authority:

Parallels Proxy certificate template:

Mac Client certificate template:

Parallels®

Parallels Configuration Manager Proxy Configuration Wizard

Role-based security
Review and modify, if necessary, the Configuration Manager Proxy role-based security settings.

Roles	Users/Groups
FileVault Key Administrators	RAMLAN\Domain Admins
Enrollers	RAMLAN\Administrator
Problem Monitor Users	
Administrator	

Parallels® < Back Next > Cancel

Parallels Configuration Manager Proxy Configuration Wizard

Configuration Manager Proxy communication ports
Specify TCP ports that the Configuration Manager Proxy will use to communicate with the Configuration Manager console and Mac Clients.

Use custom ports

Port for incoming connections to SCCM Proxy: 8760

Port for downloading Mac Client installation package: 8761

i Configuration Manager Proxy uses these ports to serve requests from the Configuration Manager console and Mac Clients. It also publishes its current port configuration in Active Directory and the DNS in order to be discoverable by its clients if the port configuration changes.

Parallels® < Back Next > Cancel

Parallels Configuration Manager Proxy Configuration Wizard

Customer Experience Program

Parallels Customer Experience Program helps us to improve the quality and reliability of Parallels Mac Management.

i If you accept, we will collect information about the way you use Parallels Mac Management. We will not collect any personal data, like your name, address, phone number, or keyboard input. [Click here](#) for more information.

Yes, I am willing to participate in the Customer Experience Improvement Program. (Recommended)

No, I don't wish to participate.

Parallels® < Back Next > Cancel

Configuration settings summary

Review the Configuration Manager Proxy settings below. Click the Finish button to apply the new settings.

SMS provider host:	CB.RAMLAN.CA
SMS site code:	TOR
SCCM Proxy service account name:	RAMLAN\Administrator
Certificate management:	Using corporate Certificate Authority
Certificate Authority:	DC.RAMLAN.CA\RAMLAN-DC-CA
SCCM Proxy certificate template:	Parallels Proxy
Mac Client certificate template:	Parallel Proxy Client



< Back

Finish

Cancel



Configuration Manager Proxy settings have been updated successfully.

To reconfigure Configuration Manager Proxy, run this Wizard again. The Wizard can be accessed from the Windows Start menu.

OK

SMS Provider location

Specify the server where the SMS Provider is installed.

Local server - the SMS Provider is not installed on the local computer

Remote server (enter the hostname or IP address)

The SMS Provider is a WMI provider that allows read and write access to the Configuration Manager site database. The SMS Provider can be installed on a dedicated server or on a local computer.



Next >

Cancel

Parallels NetBoot Server service account

Specify the service account for the NetBoot Server. The account you choose must have read/write access to the SMS Provider.

Local System account

This account:

RAMLAN\Administrator

Browse...

Password:

••••••••

i NetBoot server enables Macs to boot from the network. The LocalSystem account is normally used when the SMS Provider is located on the same server as the NetBoot server. A specific account may also be used if you want to manage the NetBoot service access rights.



< Back

Next >

Cancel

NetBoot image path

Specify a location for NetBoot images

Path:

C:\pmmimages

Browse...

i The NetBoot server will store disk image files (.dmg) in the folder you specify here. The disk should have enough space to accommodate large image files.



< Back

Next >

Cancel

Configuration settings summary

Review the NetBoot Server settings below. Click the Next button to apply the new settings.

SMS provider host:	CB.RAMLAN.CA
SMS site code:	TOR
NetBoot Server service account name:	RAMLAN\Administrator
Boot files path:	C:\RemoteInstall\pmmboot
Images path:	C:\pmmimages



< Back

Next >

Cancel

Configuration progress
Applying configuration.

Applying configuration changes ...
 Set NetBoot Server service account to RAMLAN\Administrator
 Set NetBoot Server service options
 Write NetBoot Server settings
 Configuring WDS options
 Configuring IIS options
 Registering WDS Provider Dll
 Restarting WDS Server
 Starting Parallels NetBoot Service...
 Configuration was applied successfully.

Parallels OS X Software Update Point service account

Specify the service account for the Parallels OS X Software Update Point. The account you choose must be able to publish local updates to WSUS.

Account Name:

Password:

The Parallels OS X Software Update Point service publishes Apple software updates to Windows Server Update Services so they can be distributed to Macs using Configuration Manager.

Prerequisites Check

Passed: 6 Failed: 0 Warnings: 0

- The current user ("RAMLAN\Administrator") must have local administrator rights.
- The specified "RAMLAN\Administrator" account must be a member of the "WSUS Administrators" group.
- The WSUS signing certificate must be deployed and accessible by "RAMLAN\Administrator".
- The WSUS signing certificate must not be expired.
- The public key for the WSUS signing certificate must be installed in the Root store.
- The public key for the WSUS signing certificate must be installed in the Trusted Publishers store.

Configuration settings summary

Review the Parallels OS X Software Update Point settings below. Click the Finish button to apply the new settings.

Parallels OS X Software Update Point service account name RAMLAN\Administrator



< Back

Finish

Cancel



Parallels Software Update Point service configuration settings have been applied successfully.

To reconfigure, run this Wizard again.

OK

Once the upgrade is done on both the servers – restart and check license properties to make sure the error is gone.

Overview ▶ Parallels Mac Management ▶ Licenses

< Licenses 1 items

Search

Icon	Site Code	License Status
	TOR	In grace period

This concludes upgrading PMM servers.

Thanks

Ram Lan
17th May 2020