

Installing Technical Preview 2003 – Configuration Manager Endpoint

In this post, I will show you the install steps and explore new features released in TP2003. I am running TP2002 and will be upgrading the version to TP2003.

Visit below link for more details about TP2003.

<https://techcommunity.microsoft.com/t5/configuration-manager-blog/onboard-clients-to-microsoft-defender-atp-using-memac-and/ba-p/1266085>

<https://docs.microsoft.com/en-us/configmgr/core/get-started/2020/technical-preview-2003>

The screenshot shows the Microsoft Endpoint Configuration Manager console. The top window displays the title 'About Microsoft Endpoint Configuration Manager' and the version information: 'Microsoft Endpoint Configuration Manager Version 2002 for Technical Preview Console version: 5.2002.1052.1000 Site version: 5.0.8961.1000'. A large black arrow points to the 'Home' button in the ribbon. Below this, the 'Updates and Servicing' ribbon is active, showing a list of updates. The 'Configuration Manager Technical Preview 2003' update is highlighted, showing its state as 'Downloading'. The bottom window shows the 'Configuration Manager Updates Wizard' with the 'General' tab selected. The wizard provides information about the update, including a list of features and prerequisite warnings. The 'Next >' button is highlighted.

Microsoft Endpoint Configuration Manager

Version 2002 for Technical Preview
Console version: 5.2002.1052.1000
Site version: 5.0.8961.1000

Updates and Servicing

Name	Date Released	State	Prereq Only
Configuration Manager Technical Preview 2003	29-Mar-2020 12:00 AM	Downloading	No

Configuration Manager Updates Wizard

General

Configuration Manager Technical Preview 2003

This wizard helps you configure and install this update.
[Learn more.](#)

This version includes:

- Configuration Manager site server updates
- Configuration Manager console updates
- Configuration Manager client updates
- Fixes for known issues
- New features

Prerequisite warnings:

☒ Ignore any prerequisite check warnings and install this update regardless of missing requirements.

[Privacy Statement](#)

< Previous Next > Summary Cancel



Features

General

Features

Client Update Options

License Terms

Summary

Progress

Completion

Features included in update pack

This update pack includes the following features. Select the features you want to enable now. Features you don't enable now can be enabled later from the Updates and Servicing node of the Configuration Manager console.

- ☒ Enable third party update support on clients
- ☒ Device Health Attestation assessment for compliance policies for conditional access
- ☒ Package Conversion Manager
- ☒ Windows Defender Exploit Guard policy
- ☒ Microsoft Operations Management Suite (OMS) Connector
- ☒ Task Sequence Debugger
- ☒ Cloud Management Gateway
- ☒ Surface Driver Updates
- ☒ Windows Hello for Business
- ☒ Task Sequence as an app model deployment type install method

Description:

< Previous

Next >

Summary

Cancel



Client Update Options

General

Features

Client Update Options

License Terms

Summary

Progress

Completion

Client Update Settings

This update includes an update for the Configuration Manager client. You can upgrade your clients immediately, or validate this client in a pre-production collection before you upgrade all your Configuration Manager clients.

☒ Upgrade without validating

Overwrites your current Configuration Manager client package with the new client update. All new client installations and client upgrades use this new client update.

☐ Validate in pre-production collection

Validate the client update on members of the pre-production collection while you keep your production client package intact. Later, you can overwrite the production package using Client Update Options in the Updates and Servicing node of the Configuration Manager console.

Pre-production collection:

Browse...

< Previous

Next >

Summary

Cancel



License Terms

General

Features

Client Update Options

License Terms

Summary

Progress

Completion

Review and accept the terms for this update pack

You must accept the License Terms and Privacy Statement to continue installation.

[View the License Terms](#)[View the Privacy Statement](#)

☒ I accept these License Terms and Privacy Statement.

You can add or update your Software Assurance expiration date. This date must be after 01-Oct-2016.

Software Assurance expiration date:

01-Dec-2020 

[Learn more](#)

< Previous

Next >

Summary

Cancel



Summary

General

Features

Client Update Options

License Terms

Summary

Progress

Completion

Confirm the Settings

Details:

Summary of update package installation

Install Update Package Configuration Manager Technical Preview 2003
Prerequisite warnings will be ignored
Test new version of the client in production
Software Assurance expiration date is 2020-12-01.

To change these settings, click Previous. To apply the settings, click Next.

< Previous

Next >

Summary

Cancel



Completion

General

Features

Client Update Options

License Terms

Summary

Progress

Completion



The Configuration Manager Updates Wizard completed successfully

Details:

Summary of update package installation

✓ Success: Install Update Package Configuration Manager Technical Preview 2003
 Prerequisite warnings will be ignored
 Test new version of the client in production
 Software Assurance expiration date is 2020-12-01.

To exit the wizard, click Close.

< Previous

Next >

Summary

Close

Administration > Overview > Updates and Servicing >

Administration

Overview

Updates and Servicing

Hierarchy Configuration

Updates and Servicing 2 items

Search

Name	Date Released	State	Prereq Only	Ignore Prereq Warning	Full Version
Configuration Manager Technical Preview 2003	29-Mar-2020 12:00 AM	Installing	No	Yes	5.00.8974.1000

Administration > Overview > Updates and Servicing >

Administration

Overview

Updates and Servicing

Hierarchy Configuration

Updates and Servicing 2 items

Search

Name	Date Released	State	Prereq Only	Ignore Prereq Warning	Full Version
Configuration Manager Technical Preview 2003	29-Mar-2020 12:00 AM	Checking prerequisites	No	Yes	5.00.8974.1000

Administration > Administration > Overview > Updates and Servicing >

Administration

Overview

Updates and Servicing

Hierarchy Configuration

Updates and Servicing 2 items

Search

Name	Date Released	State	Prereq Only	Ignore Prereq Warning	Full Version
Configuration Manager Technical Preview 2003	29-Mar-2020 12:00 AM	Prerequisite check passed with warnings	No	Yes	5.00.8974.1000

Update Pack Installation Status

Detailed status for the Configuration Manager Technical Preview 2003 installation on the site TP1:

Refresh

[View Post-Setup Configuration tasks](#)

Name	Status	Last Update Time
✓ Download	Completed	01-Apr-2020 9:45:10 AM
✓ Replication	Completed	01-Apr-2020 10:05:36 AM
⚠ Prerequisite Check	Completed with ...	01-Apr-2020 10:08:35 AM
▶ Installation	In progress	01-Apr-2020 10:17:32 AM
Post Installation	Not started	

Name	Status	Last Update Time	Description
✓ SQL Server supported version	Completed	01-Apr-2020 10:08:35 AM	Starting with versic
✓ SQL availability group replicas must be healthy	Completed	01-Apr-2020 10:08:23 AM	Checking availabili
✓ SQL availability group replicas must all have the same se...	Completed	01-Apr-2020 10:08:23 AM	Checking availabili
✓ Software Update Points using a Load Balancer (NLB/HL...	Completed	01-Apr-2020 10:08:32 AM	Starting with versic
✓ Upgrade Assessment Toolkit is no longer supported.	Completed	01-Apr-2020 10:08:32 AM	Starting with versic
✓ Unsupported site server operating system version for Set...	Completed	01-Apr-2020 10:08:22 AM	Verifies that the sit
✓ Unsupported operating system version for site system role	Completed	01-Apr-2020 10:08:23 AM	Verifies that the sit
✓ Using HTTP management point with cloud management ...	Completed	01-Apr-2020 10:08:33 AM	Checking if HTTP
✓ SQL Server Always On availability groups	Completed	01-Apr-2020 10:08:33 AM	Checks if the spec
✓ Max Text Repl Size for SQL Server Always On availabili...	Completed	01-Apr-2020 10:08:33 AM	Checks if the max
✓ Pending configuration item policy updates	Completed	01-Apr-2020 10:08:34 AM	Checks if there are
✓ SQL Server Configuration for site upgrade	Completed	01-Apr-2020 10:08:35 AM	Checks if the spec
✓ SQL Server Native Client version	Completed	01-Apr-2020 10:08:23 AM	Verifies that the ve
⚠ Potential SQL server performance issue caused by chan...	Completed with ...	01-Apr-2020 10:08:35 AM	The site database
✓ Check if the site uses hybrid mobile device management ...	Completed	01-Apr-2020 10:08:35 AM	Microsoft Intune S
✓ Check if the site uses Upgrade Readiness (UR)	Completed	01-Apr-2020 10:08:35 AM	The Upgrade Rea

Description:

[Completed with warning]: The site database has a backlog of SQL change tracking data. For more information, see <https://go.microsoft.com/fwlink/?linkid=2027576>

Administration > Overview > Updates and Servicing						
Administration		Updates and Servicing 2 items				
Overview		Search				
Updates and Servicing		Name	Date Released	State	Prereq Only	Ignore Prereq Warning
Hierarchy Configuration		Configuration Manager Technical Preview 2003	29-Mar-2020 12:00 AM	Installing	No	Yes
					Full Version	
					5.00.8974.1000	

Configuration Manager



A new version of the console is available (5.2006.1006.1000). Click OK to close the console and install the new version now. Click Cancel to continue working with the old console (5.2002.1052.1000). Working in the old console might corrupt data.

OK

Cancel

Configuration Manager

Downloading files...



Close

Microsoft Endpoint Configuration Manager Console



Please wait while Windows configures Microsoft Endpoint Configuration Manager Console

Cancel

Search

All Objects

Scope

Saved Searches

Options

Search Settings

Save Current Search

Save Current Search As

Save

Close

Active Search

What's New

Overview

Assets and Compliance

Software Library

Monitoring

Administration

Community

Microsoft Endpoint Configuration Manager 2003 Tech Preview

Welcome to update 2003 for System Center Configuration Manager Technical Preview. Below you can find information about some of the new features and scenarios that are now available for you to try. You can also view which of the new scenarios you have completed for each feature. [Read more](#) about the latest changes in the Technical Preview build.

Please continue to give us feedback! To report any issues you encounter with the latest functionality included in this Technical Preview, use the [Microsoft Connect](#) website. To request a new feature or enhancement, use the [Configuration Manager UserVoice](#) site.

What's New in 2003

Device boundary group information column on devices view

In the devices view on admin console, user can now add the column Boundary Group(s). This column will be a comma separated list of the boundary groups the device is in. This information is only available on consoles connected to primary site.

New Feedback Wizard

You now have a new wizard for sending feedback that streamlines the process. It allows you to add diagnostic logs, tells you if the submission was successful and gives you the option to save your feedback to a file for later reference.

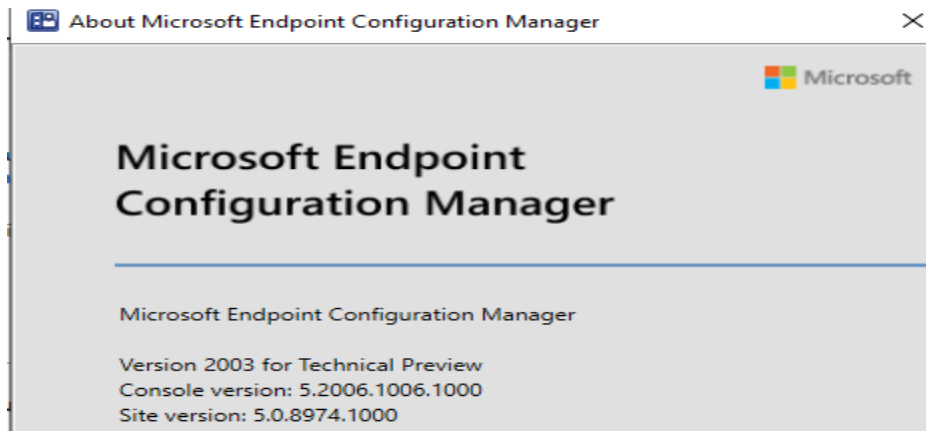
Onboard non-comanaged Windows clients and servers to Microsoft Defender ATP through the Microsoft Endpoint Manager portal

This feature will enable customers to onboard Windows client and server SKU operating systems to the Microsoft Defender ATP service. Use the 'Endpoint detection and response' policy found in the Endpoint security node of Microsoft Endpoint Manager to configure and target onboarding policies to synced collections. To create this new preview policy type, use the following URL [aka.ms/ATPTenantAttachPreview](#).

Query for Feedback sent to Microsoft

There is a new query named "Feedback sent to Microsoft" to help you find status messages for feedback sent to Microsoft for this hierarchy.

Ready



4 What's New in 2003

Device boundary group information column on devices view

In the devices view on admin console, user can now add the column Boundary Group(s). This column will be a comma separated list of the boundary groups the device is in. This information is only available on consoles connected to primary site.

New Feedback Wizard

You now have a new wizard for sending feedback that streamlines the process. It allows you to add diagnostic logs, tells you if the submission was successful and gives you the option to save your feedback to a file for later reference.

Onboard non-managed Windows clients and servers to Microsoft Defender ATP through the Microsoft Endpoint Manager portal

This feature will enable customers to onboard Windows client and server SKU operating systems to the Microsoft Defender ATP service. Use the 'Endpoint detection and response' policy found in the Endpoint security node of Microsoft Endpoint Manager to configure and target onboarding policies to synced collections. To create this new preview policy type, use the following URL aka.ms/ATPTenantAttachPreview.

Query for Feedback sent to Microsoft

There is a new query named "Feedback sent to Microsoft" to help you find status messages for feedback sent to Microsoft for this hierarchy.

Start CMPivot from a single device

Start CMPivot on a specific device for real-time query results on that individual device instead of an entire collection.

Track browser usage in Edge dashboard

The Microsoft Edge Management dashboard has a new Preferred browser by device chart. The chart gives you insights into which browser was most used by each device over the last 7 days. If a user has two devices, they're counted separately since the primary browser used on each device might vary.

Track Configuration Item Remediations

This feature allows administrators to track the remediation history of Configuration Items.

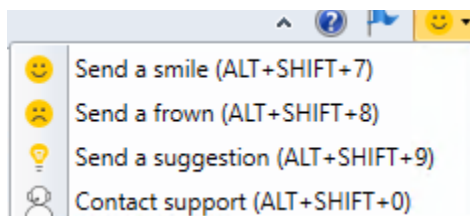
NEW FEATURES:

1. New Boundary Group – Device View

Devices 4 items

Search							
Icon	Name	Client	Primary User(s)	Currently Logged on User	Site Code	Client Activity	Boundary Group(s)

2. New Feedback Wizard





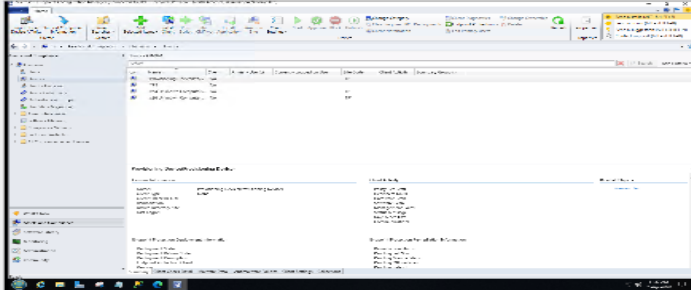
Let us know what you liked!

Tell us what you liked:

Give as much detail as you can

☒ You can contact me about this feedback

☒ Include screenshot



Browse...

Refresh

Contact Information

By including your email you allow us to follow up with you if we have questions or an update about your feedback.

[Your privacy is important to us.](#)

Your feedback is collected by Microsoft and used to improve your experience.



Previous

Next

Cancel



Please describe your issue

If you need immediate assistance, contact our technical support team. [More information.](#)

If you have suggestions for improvements, send them to our UserVoice. [More information.](#)

Issue category:

What issue are you experiencing? Has it always been this way?

Please describe your issue in as much detail as possible.

Separate Issues

If you have multiple issues, submit multiple reports.

Clear Details

Provide clear details and share your research to help us diagnose the problem.

☒ You can contact me about this feedback

Contact Information

By including your email you allow us to follow up with you if we have questions or an update about your feedback.

[Your privacy is important to us.](#)

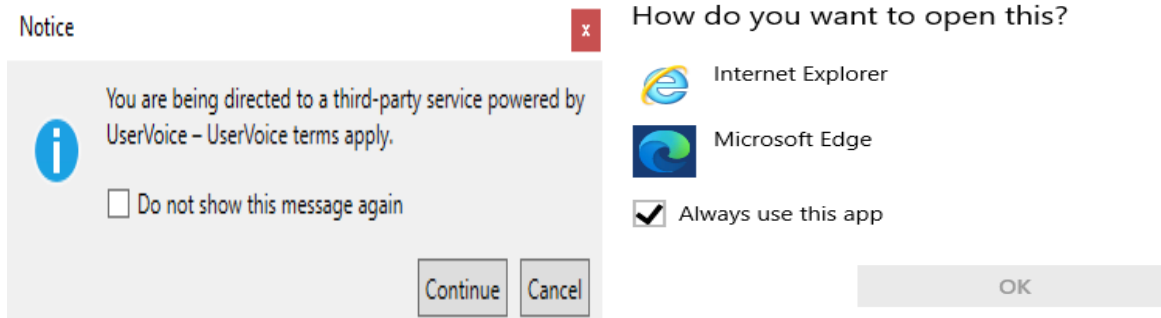
Your feedback is collected by Microsoft and used to improve your experience.



Previous

Next

Cancel



3. Microsoft Defender ATP

You can now deploy Microsoft Defender ATP Endpoint Detection and Response (EDR) onboarding policies to Configuration Manager managed clients. These clients don't require Azure AD or MDM enrollment, and the policy is targeted at ConfigMgr collections rather than Azure AD Groups.

Prerequisites

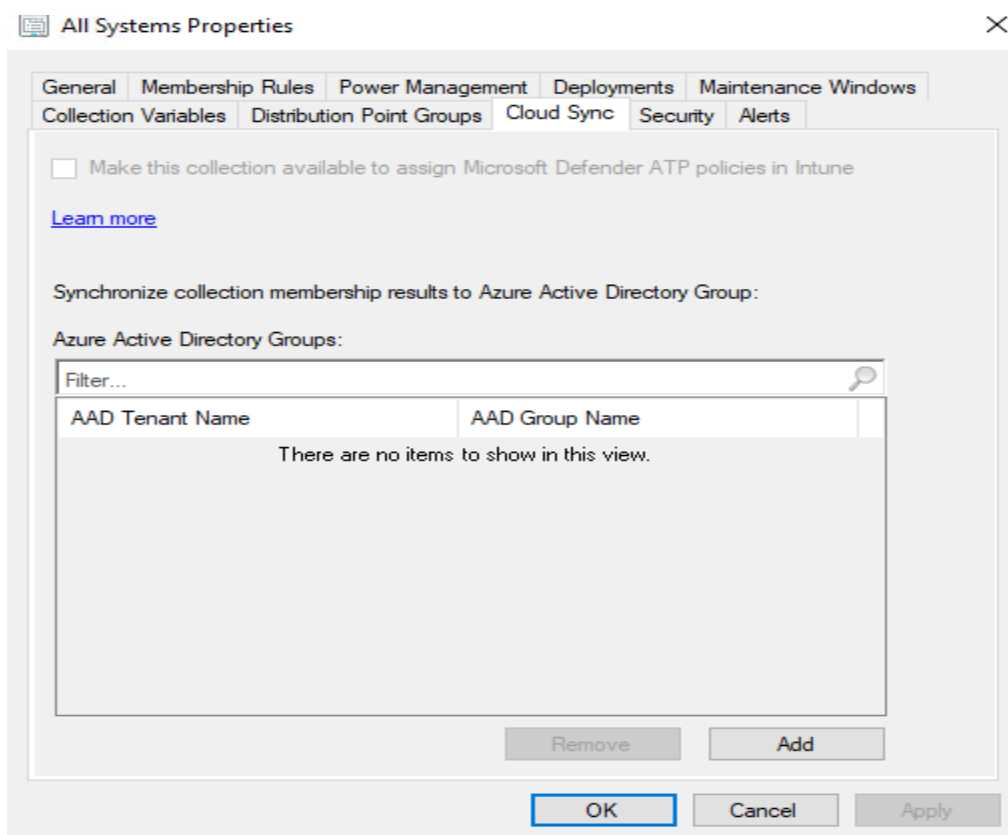
Access to the Microsoft Endpoint Manager admin center.

An E5 license for Microsoft Defender ATP.

A Microsoft Endpoint Manager tenant attached hierarchy.

Right-click on a device collection and select Properties.

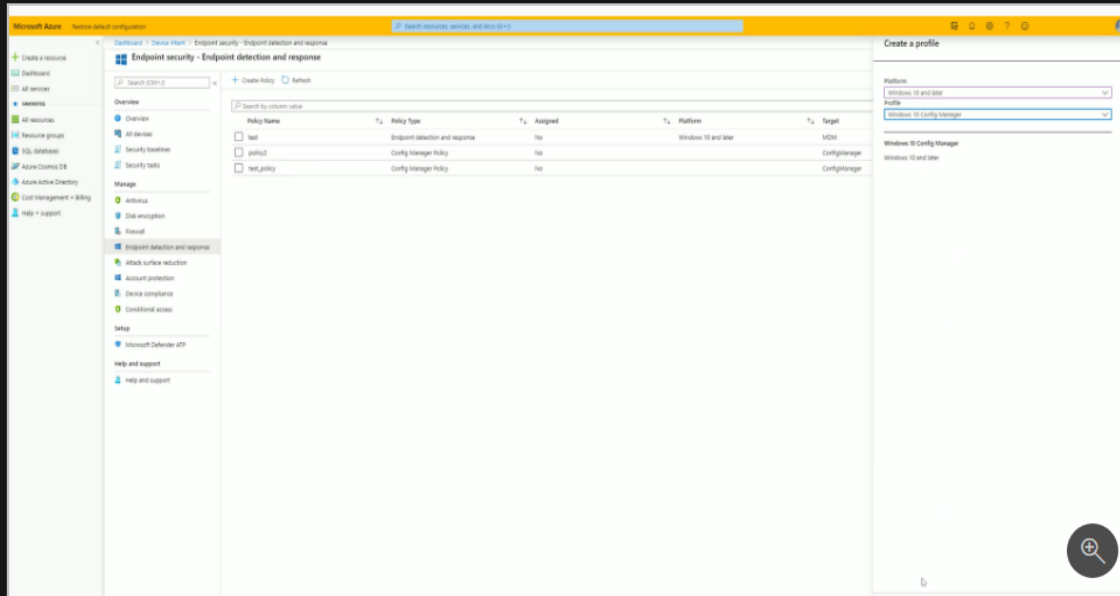
On the Cloud Sync tab, enable the option to Make this collection available to assign Microsoft Defender ATP policies in Intune. The option is disabled if your hierarchy isn't tenant attached.



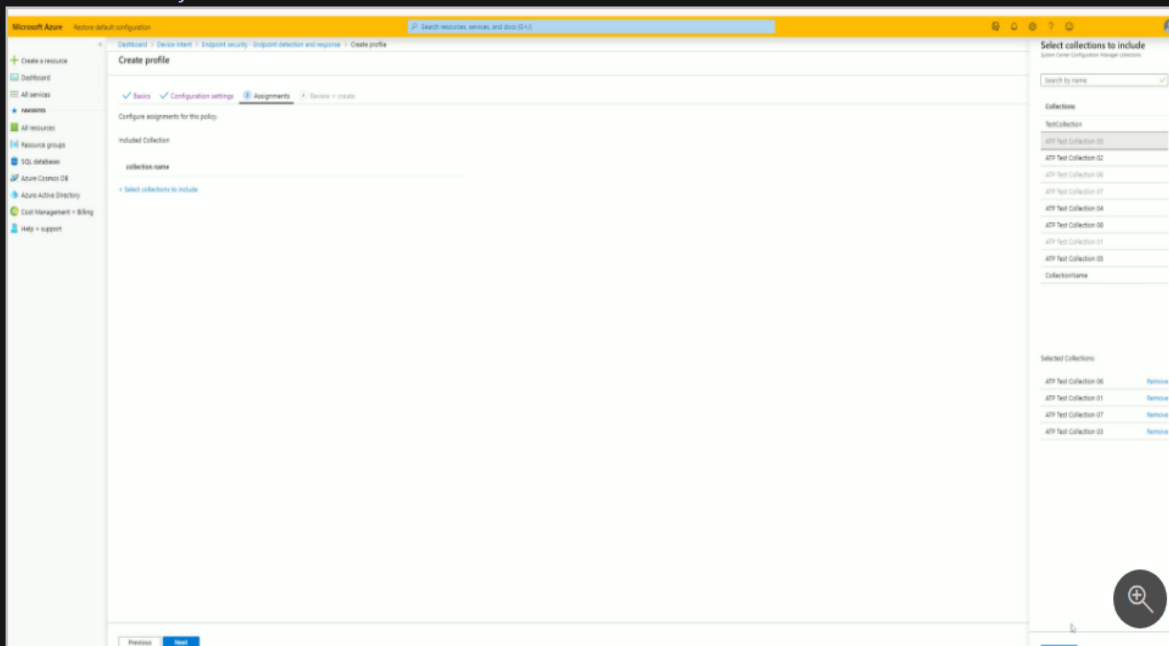
Create Microsoft Defender ATP policy for Configuration Manager collections

1. Open a web browser and go to <https://aka.ms/ATPTenantAttachPreview>.
2. Select **Endpoint detection and response** then select **Create Policy**.
3. Use the following settings for the profile, then click **Create** when done:

- **Platform:** Windows 10 and later
- **Profile:** *Windows 10 Config Manager



4. Supply a **Name** and **Description** then click **Next**.
5. Choose your **Configuration settings** then click **Next**.
6. Under **Assignments**, click **Select collections to include**. You'll see a list of your available Configuration Manager collections. Select your collections and click **Next** when done.



7. Click **Create** once you have finished reviewing your settings under **Review + create**.

4. Query Feedback sent to Microsoft

As you can see from Queries – I do not have Feedback query to test because TP upgraded from previous version.

Queries 1 / Items			
Search			
Icon	Name	Resource Class	Query ID
	All Active Directory Security Groups	User Group Resource	SMS005
	All Client Systems	System Resource	SMS028
	All Company Owned Devices	System Resource	SMS031
	All jailbroken or rooted devices	System Resource	SMS030
	All Mobile Devices	System Resource	SMSDM1
	All Non-Client Systems	System Resource	SMS029
	All Personal Devices	System Resource	SMS032
	All Systems	System Resource	SMS001
	All Systems with Hardware Inventory Collected	System Resource	SMS006
	All Systems with Specified Software File Name and File Size	System Resource	SMS027
	All Systems with Specified Software Product Name and Version	System Resource	SMS026
	All Unknown Computers	Unknown Computer	SMS0US
	All User Groups	User Group Resource	SMS003
	All Users	User Resource	SMS002
	ConfigMgr clients not upgraded to Configuration Manager 2012 R2 or later	System Resource	SMS041
	Systems by Last Logged On User	System Resource	SMS024
	This Site and its Subsites	Site And Subsites	SMS012

Run this query in SSMS

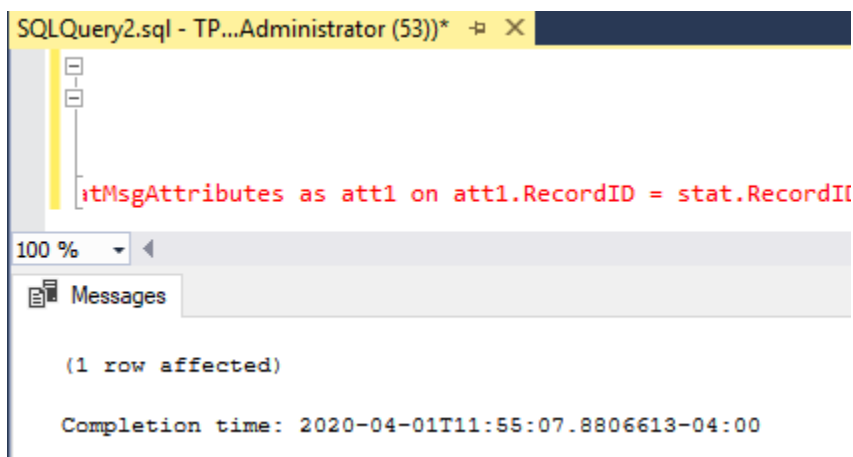
```
IF EXISTS (SELECT * FROM Queries WHERE QueryKey = N'SMS595')
```

```
BEGIN
```

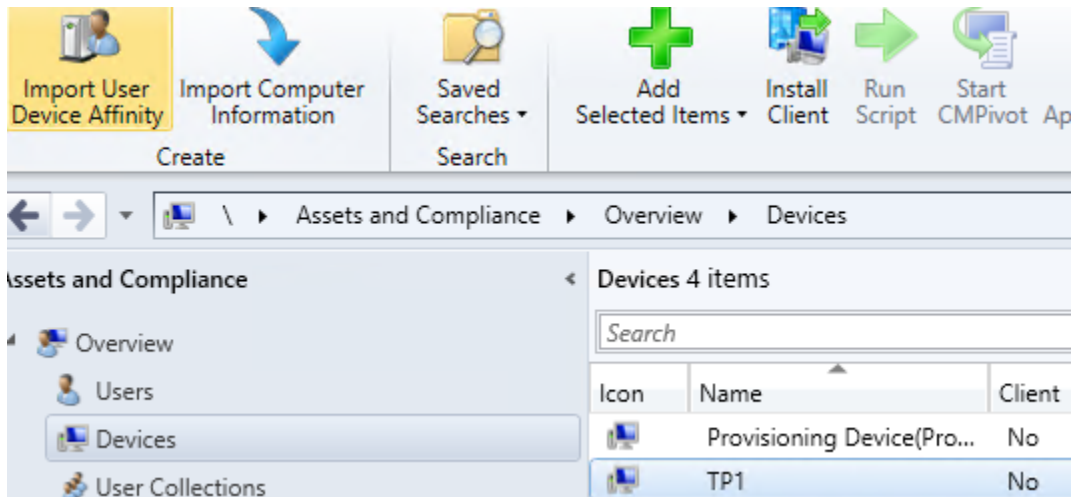
```
DELETE FROM Queries WHERE QueryKey = N'SMS595'
```

```
END
```

```
INSERT INTO Queries (QueryKey, Name, Comments, Architecture, Lifetime, WQL) VALUES ('SMS595',  
N'Feedback sent to Microsoft', N'Configuration Manager feedback sent to Microsoft for this hierarchy.',  
'SMS_StatusMessage', 1, 'select stat.*, ins.*, att1.*, stat.Time from SMS_StatusMessage as stat left join  
SMS_StatMsgInsStrings as ins on ins.RecordID = stat.RecordID left join SMS_StatMsgAttributes as att1  
on att1.RecordID = stat.RecordID where stat.Time >= ##PRM:SMS_StatusMessage.Time## and  
(stat.MessageID = 53900 or stat.MessageID = 53901) order by stat.Time DESC')
```

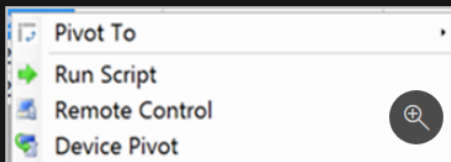


5. Start CMPivot from a single device



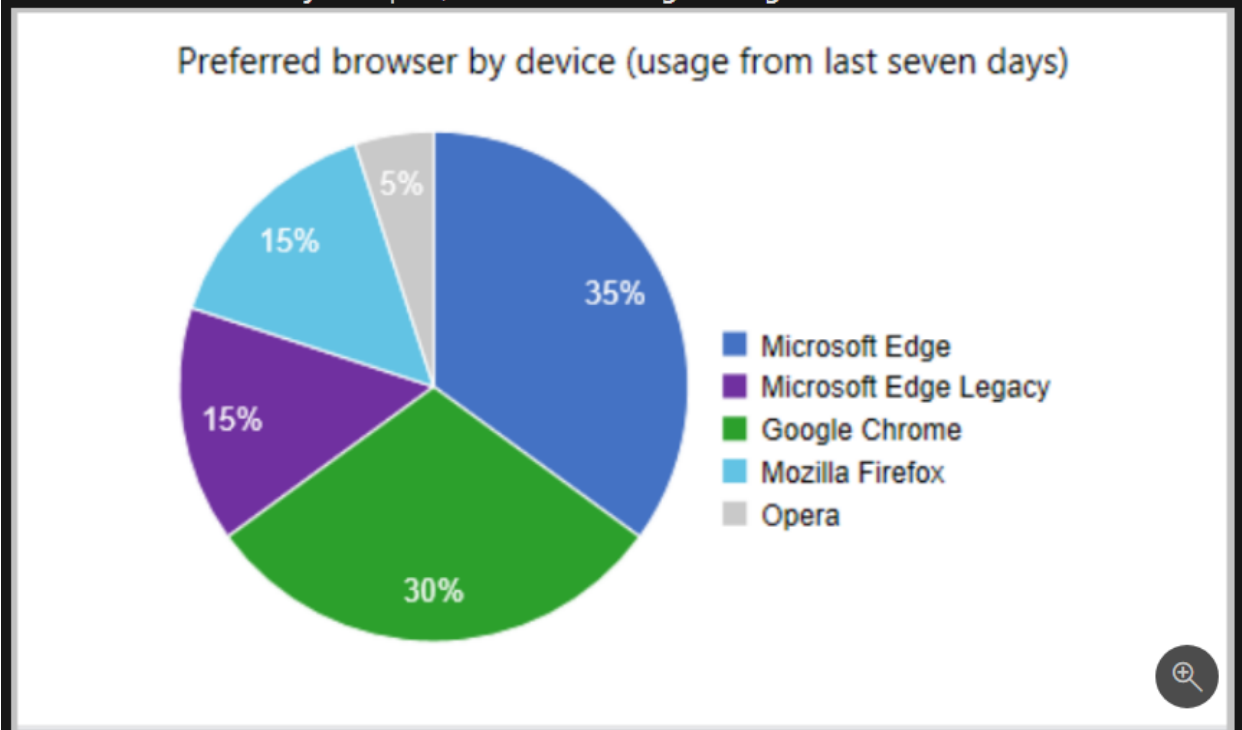
You can start CMPivot for an individual device in two ways. The device name is at the top of the CMPivot window so you can differentiate it from others. To start CMPivot for a device:

1. Select an individual device in a device collection and click **Start CMPivot**. There's no need to select the entire device collection.
2. Within an existing CMPivot operation, right-click a device in the device output and pivot using the **Device Pivot** option.
 - This action launches a separate CMPivot instance on that individually selected device.

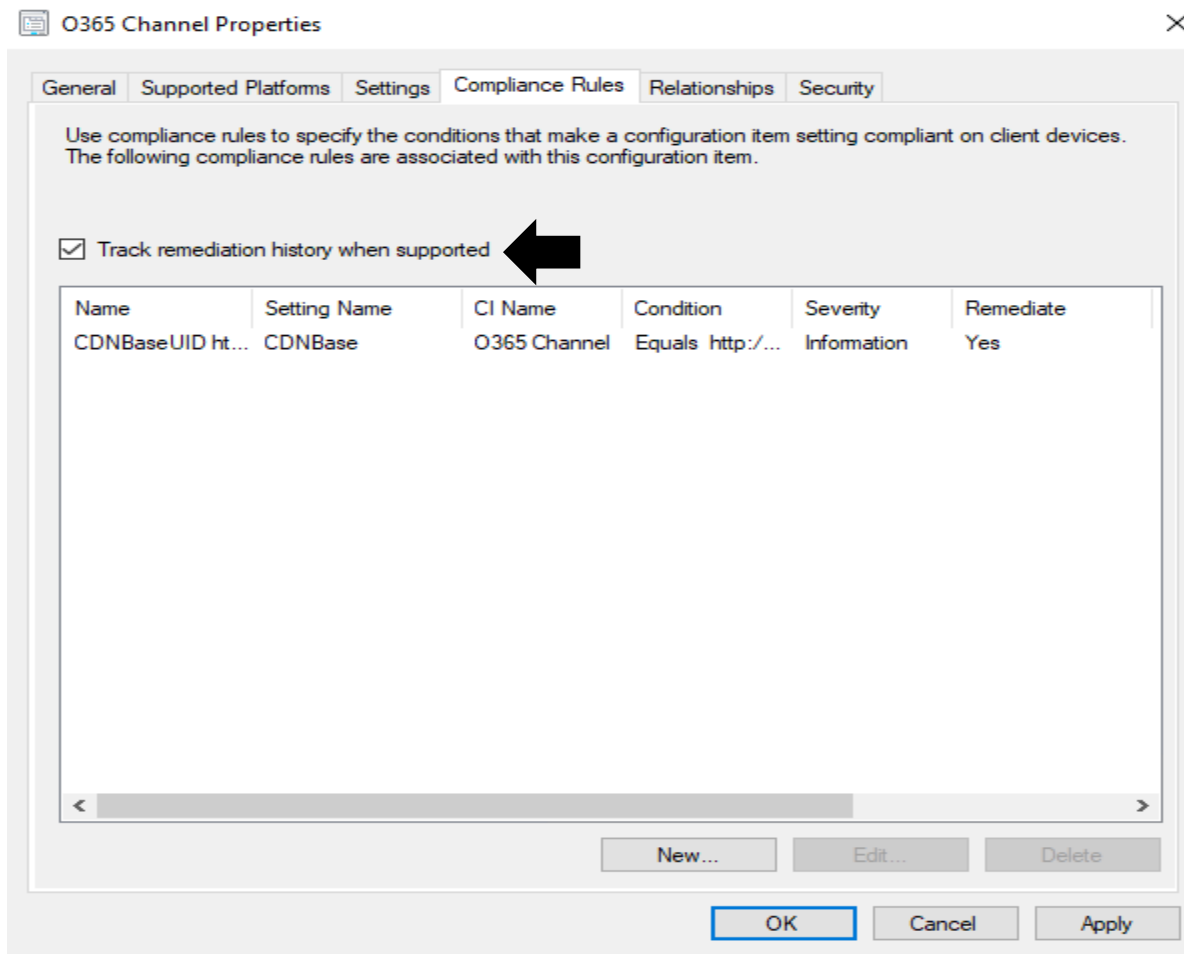
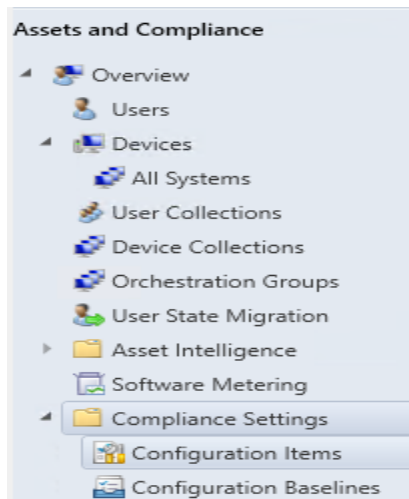


6. Track browser usage in Edge Dashboard

From the **Software Library** workspace, click **Microsoft Edge Management** to see the dashboard's new chart.



7. Track Configuration Item remediation



This concludes all new features in TP2003.

Thanks

Ram Lan

1st April 2020