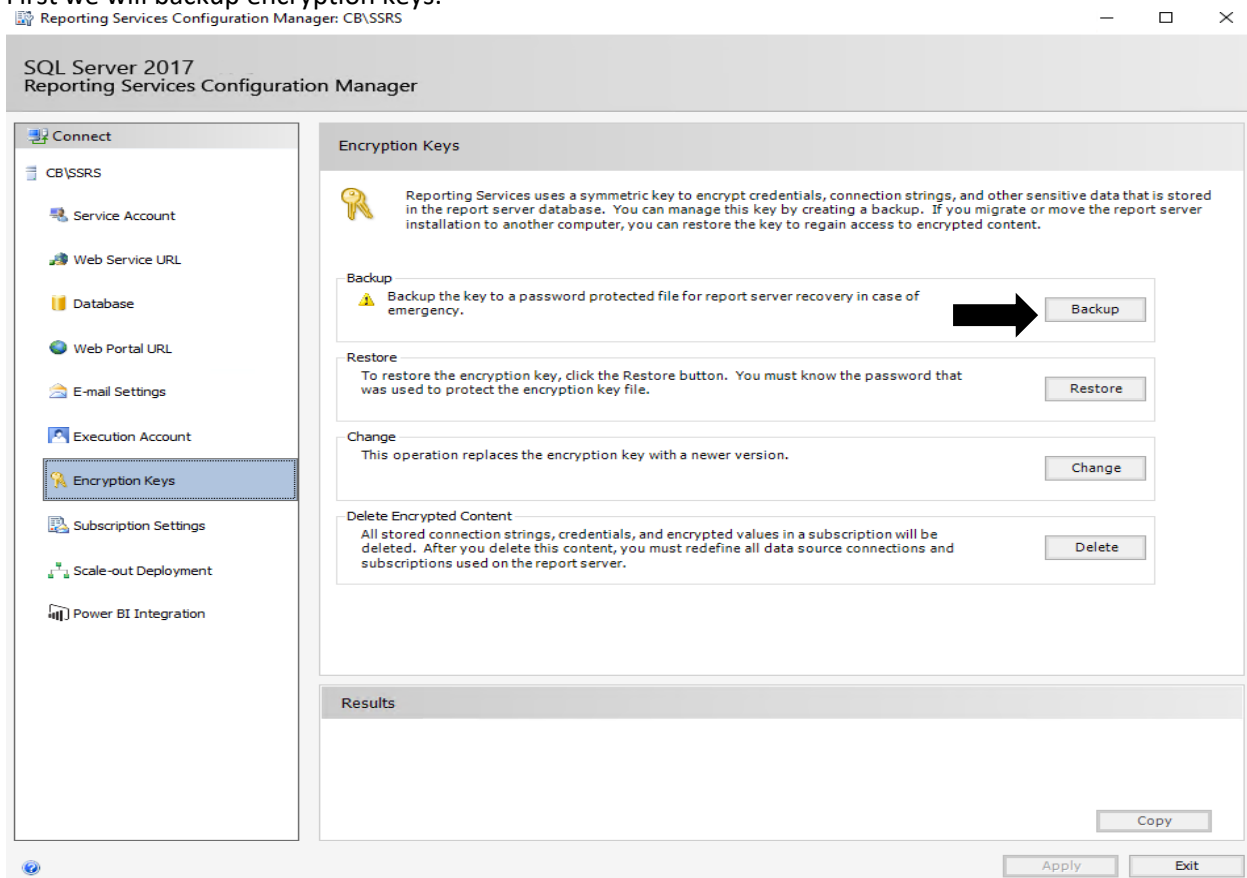


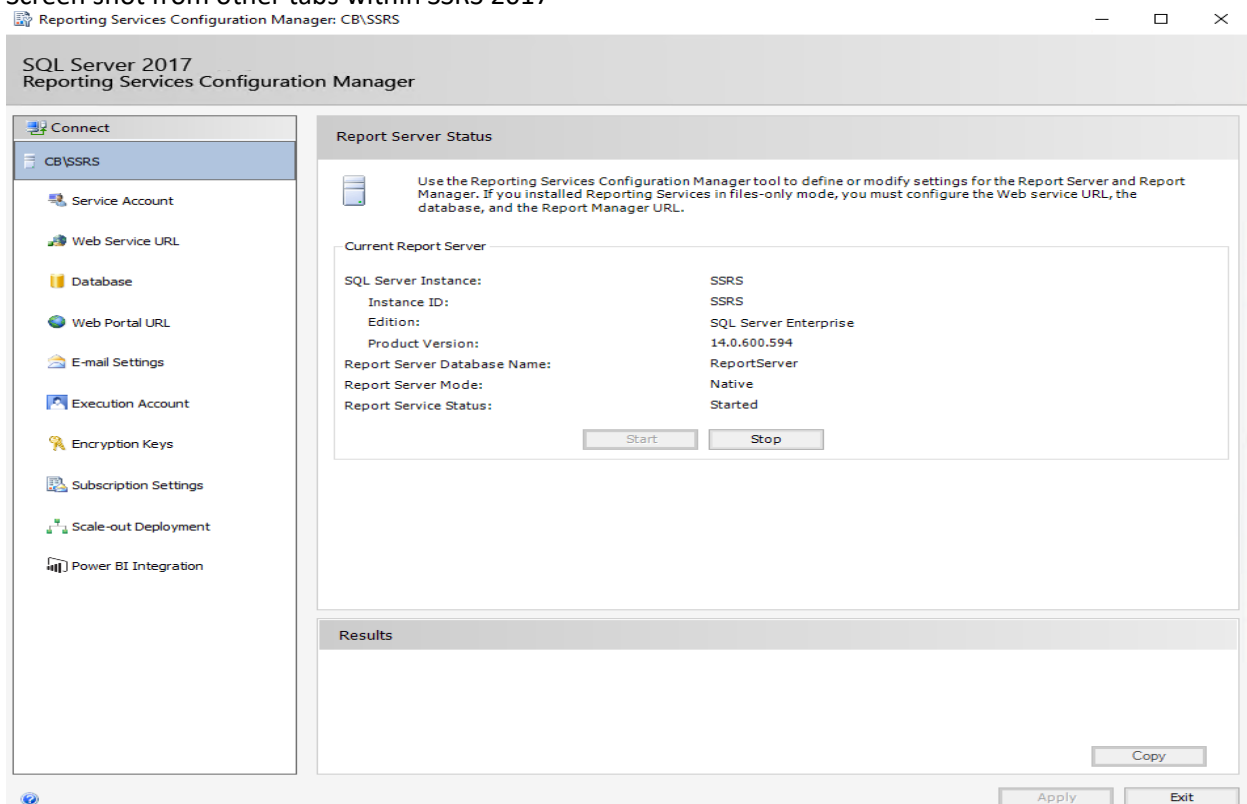
How to upgrade SSRS 2017 to SSRS 2019

In this post, I will show you the steps to upgrade SSRS 2017 to SSRS 2019. I am running SQL Server Reporting Services 2017. I will upgrade this to SQL Server Reporting Services 2019.

First we will backup encryption keys.



Screen shot from other tabs within SSRS 2017



SQL Server 2017
Reporting Services Configuration Manager

Connect

CB\SSRS

Service Account

Web Service URL

Database

Web Portal URL

E-mail Settings

Execution Account

Encryption Keys

Subscription Settings

Scale-out Deployment

Power BI Integration

Service Account

Specify a built-in account or Windows domain user account to run the report server service.

Report Server Service Account

Choose an option to set the service account and then click Apply.

☐ Use built-in account:

Network Service

☒ Use another account:

Account (Domain\user):

ramlan\administrator

Password:

••••••••

Results

Copy

Apply Exit

SQL Server 2017
Reporting Services Configuration Manager

Connect

CB\SSRS

Service Account

Web Service URL

Database

Web Portal URL

E-mail Settings

Execution Account

Encryption Keys

Subscription Settings

Scale-out Deployment

Power BI Integration

Web Service URL

Configure a URL used to access the Report Server. Click Advanced to define multiple URLs for a single Report Server instance, or to specify additional parameters on the URL.

Report Server Web Service Virtual Directory

Virtual Directory:

ReportServer

Report Server Web Service Site Identification

IP Address:

All Assigned (Recommended)

TCP Port:

80

HTTPS Certificate:

HTTPS SSRS

HTTPS Port:

443

Advanced...

Report Server Web Service URLs

URLs:

<http://CB:80/ReportServer>
<https://CB.RAMLAN.CA:443/ReportServer>

Results

Copy

Apply Exit

SQL Server 2017
Reporting Services Configuration Manager

Connect

CB\SSRS

Service Account

Web Service URL

Database

Web Portal URL

E-mail Settings

Execution Account


Encryption Keys

Subscription Settings

Scale-out Deployment

Power BI Integration

Report Server Database

 Reporting Services stores all report server content and application data in a database. Use this page to create or change the report server database or update database connection credentials.

Current Report Server Database

Click Change database to select a different database or create a new database in native or SharePoint integrated mode.

SQL Server Name:CB

Database Name:ReportServer

Report Server Mode:Native

Change Database

Current Report Server Database Credential

The following credentials are used by the report server to connect to the report server database. Use the options below to choose a different account or update a password.

Credential:Service Account

Login:ramlan\administrator

Password:*****

Change Credentials

Results

Copy

Apply

Exit

SQL Server 2017
Reporting Services Configuration Manager

Connect

CB\SSRS

Service Account

Web Service URL

Database

Web Portal URL

E-mail Settings

Execution Account


Encryption Keys

Subscription Settings

Scale-out Deployment

Power BI Integration

Web Portal URL

 Configure a URL to access Web Portal. Click Advanced to define multiple URLs, or to specify additional parameters on the URL.

Web Portal Site Identification

Virtual Directory:Reports

URLs:<http://CB:80/Reports>
<https://CB.RAMLAN.CA:443/Reports>

Advanced

Results

Copy

Apply

Exit

SQL Server 2017
Reporting Services Configuration Manager

Connect

CB\SSRS

Service Account

Web Service URL

Database

Web Portal URL

E-mail Settings

Execution Account


Encryption Keys

Subscription Settings

Scale-out Deployment

Power BI Integration

E-mail Settings

 To use report server e-mail, specify an existing SMTP server and an e-mail account that can send e-mail from that server.

SMTP Settings

To edit, change the fields and click the Apply button.

Sender Address:

Current SMTP Delivery Method:

SMTP Server:

Authentication:

Results

Copy

Apply Exit

SQL Server 2017
Reporting Services Configuration Manager

Connect

CB\SSRS

Service Account

Web Service URL

Database

Web Portal URL

E-mail Settings

Execution Account


Encryption Keys

Subscription Settings

Scale-out Deployment

Power BI Integration

Scale-out Deployment

 Use this page to view information about a scale-out deployment. Report Servers that are joined to the scale-out can store encrypted data in a common Report Server database. Servers that are waiting to join the scale-out deployment must be added by a Report Server instance that is already part of the deployment.

Scale-out Deployment Status

SQL Server Name: CB

Database Name: ReportServer

Report Server Mode: Native

Server	Instance	Status
CB	SSRS	Joined


Add Server Remove Server

Results

Copy

Apply Exit

Now we are ready for the upgrade (SSRS 2019).

Name	Date modified	Type	Size
 04 SQLServerReportingServices 2019.exe	04-Apr-2020 3:33 ...	Application	107,947 KB

Microsoft SQL Server 2019 Reporting Services

Welcome

Upgrade Reporting Services

SQL Server Reporting Services transmits information about your installation experience, as well as other usage and performance data, to Microsoft to help improve the product. To learn more about SQL Server Reporting Services data processing and privacy controls, please see [Privacy Statement](#). Learn how to opt out of collection [here](#).

Microsoft SQL Server 2019 Reporting Services

Review the license terms

MICROSOFT SOFTWARE LICENSE TERMS

MICROSOFT SQL SERVER 2019 ENTERPRISE

These license terms are an agreement between you and Microsoft Corporation (or one of its affiliates). They apply to the software named above, which includes the media on which you received it, if any. The terms also apply to any Microsoft services or software updates (except to the extent such services or updates are accompanied by new or additional terms, in which case those different terms apply prospectively and do not alter your or Microsoft's rights relating to pre-updated software or services). **IF YOU COMPLY WITH THESE LICENSE TERMS, YOU HAVE THE RIGHTS BELOW FOR EACH SERVER YOU PROPERLY LICENSE. BY USING THE SOFTWARE, YOU ACCEPT THESE TERMS. IF YOU DO NOT ACCEPT THEM, DO NOT USE THE SOFTWARE. INSTEAD, RETURN IT TO THE RETAILER FOR A REFUND OR CREDIT. If you cannot obtain a refund there, contact Microsoft or the Microsoft affiliate serving your**

☒ I accept the license terms

Cancel

< Previous

Upgrade

Microsoft SQL Server 2019 Reporting Services

Upgrade completed

Setup has upgraded your report server.

[Learn more](#)



Configure report server

Close

Report Server Configuration Manager: CB\SSRS

Report Server Configuration Manager

Connect

CB\SSRS

- Service Account
- Web Service URL
- Database
- Web Portal URL
- E-mail Settings
- Execution Account
- Encryption Keys
- Subscription Settings
- Scale-out Deployment
- Power BI Service (cloud)

Report Server Status

Use the Report Server Configuration Manager tool to define or modify settings for the report server and web portal. Before you can use the report server, you must configure the Web Service URL, the database, and the Web Portal URL.

Current Report Server

Instance ID:	SSRS
Edition:	SQL Server Enterprise
Product Version:	15.0.1102.675
Report Server Database Name:	ReportServer
Report Server Mode:	Native
Report Service Status:	Started

Results

Report Server Configuration Manager

Connect

CB\SSRS

Service Account

Web Service URL

Database

Web Portal URL

E-mail Settings

Execution Account

Encryption Keys

Subscription Settings

Scale-out Deployment

Power BI Service (cloud)

Service Account

Specify a built-in account or Windows domain user account to run the report server service.

Report Server Service Account

Choose an option to set the service account and then click Apply.

☐ Use built-in account: Virtual Service Account

☒ Use another account:

Account (Domain\user): ramlan\administrator

Password: ●●●●●●

Results

Copy

Apply Exit

Report Server Configuration Manager

Connect

CB\SSRS

Service Account

Web Service URL

Database

Web Portal URL

E-mail Settings

Execution Account

Encryption Keys

Subscription Settings

Scale-out Deployment

Power BI Service (cloud)

Web Service URL

Configure a URL used to access the Report Server. Click Advanced to define multiple URLs for a single Report Server instance, or to specify additional parameters on the URL.

Report Server Web Service Virtual Directory

Virtual Directory: ReportServer

Report Server Web Service Site identification

IP Address: All Assigned (Recommended)

TCP Port: 80

HTTPS Certificate: HTTPS SSRS

HTTPS Port: 443

Advanced...

Report Server Web Service URLs

URLs: <http://CB:80/ReportServer>
<https://CB.RAMLAN.CA:443/ReportServer>

Results

Copy

Apply Exit

Report Server Configuration Manager

Connect

CB\SSRS

Service Account

Web Service URL

Database

Web Portal URL

E-mail Settings

Execution Account


Encryption Keys

Subscription Settings

Scale-out Deployment

Power BI Service (cloud)

Report Server Database

 The report server stores all report server content and application data in a database. Use this page to create or change the report server database or update database connection credentials.

Current Report Server Database

Click Change database to select a different database or create a new database.

SQL Server Name: CB

Database Name: ReportServer

Report Server Mode: Native

Change Database

Current Report Server Database Credential

The following credentials are used by the report server to connect to the report server database. Use the options below to choose a different account or update a password.

Credential: Service Account

Login: ramlan\administrator

Password: *****

Change Credentials

Results

Copy

Apply Exit

Report Server Configuration Manager

Connect

CB\SSRS

Service Account

Web Service URL

Database

Web Portal URL

E-mail Settings

Execution Account


Encryption Keys

Subscription Settings

Scale-out Deployment

Power BI Service (cloud)

Web Portal URL

 Configure a URL to access Web Portal. Click Advanced to define multiple URLs, or to specify additional parameters on the URL.

Web Portal Site Identification

Virtual Directory: Reports

URLs: <http://CB:80/Reports>
<https://CB.RAMLAN.CA:443/Reports>

Advanced

Results

Copy

Apply Exit

Report Server Configuration Manager

Connect

CB\SSRS

Service Account

Web Service URL

Database

Web Portal URL

E-mail Settings

Execution Account


Encryption Keys

Subscription Settings

Scale-out Deployment

Power BI Service (cloud)

E-mail Settings

 To use report server e-mail, specify an existing SMTP server and an e-mail account that can send e-mail from that server.

SMTP Settings

To edit, change the fields and click the Apply button.

Sender Address:

administrator@ramlan.ca

Current SMTP Delivery Method:

Use SMTP server

SMTP Server:

ex2019.ramlan.ca

Authentication:

No authentication

Results

Copy

Apply

Exit

Report Server Configuration Manager

Connect

CB\SSRS

Service Account

Web Service URL

Database

Web Portal URL

E-mail Settings


Encryption Keys

Subscription Settings


Scale-out Deployment

Power BI Service (cloud)

Encryption Keys

 The report server uses a symmetric key to encrypt credentials, connection strings, and other sensitive data that is stored in the report server database. You can manage this key by creating a backup. If you migrate or move the report server installation to another computer, you can restore the key to regain access to encrypted content.

Backup

 Backup the key to a password protected file for report server recovery in case of emergency.

Backup

Restore

To restore the encryption key, click the Restore button. You must know the password that was used to protect the encryption key file.

Restore

Change

This operation replaces the encryption key with a newer version.

Change

Delete Encrypted Content

All stored connection strings, credentials, and encrypted values in a subscription will be deleted. After you delete this content, you must redefine all data source connections and subscriptions used on the report server.

Delete

Results

Copy

Apply

Exit

Report Server Configuration Manager

Connect

CB\SSRS

Service Account

Web Service URL

Database

Web Portal URL

E-mail Settings

Execution Account

Encryption Keys

Subscription Settings

Scale-out Deployment

Power BI Service (cloud)



**Power BI is
available Cloud
only – Not on
premise BI Server**

Scale-out Deployment



Use this page to view information about a scale-out deployment. Report Servers that are joined to the scale-out can store encrypted data in a common Report Server database. Servers that are waiting to join the scale-out deployment must be added by a Report Server instance that is already part of the deployment.

Scale-out Deployment Status

SQL Server Name: CB
Database Name: ReportServer
Report Server Mode: Native

Server	Instance	Status
CB	SSRS	Joined

Add Server

Remove Server

Results

Copy

Apply

Exit



Not secure | cb/Reports/browse/



SQL Server Reporting Services

★ Favorites

Browse



Home

Home

FOLDERS (1)



ConfigMgr_TOR



Not secure | cb/ReportServer

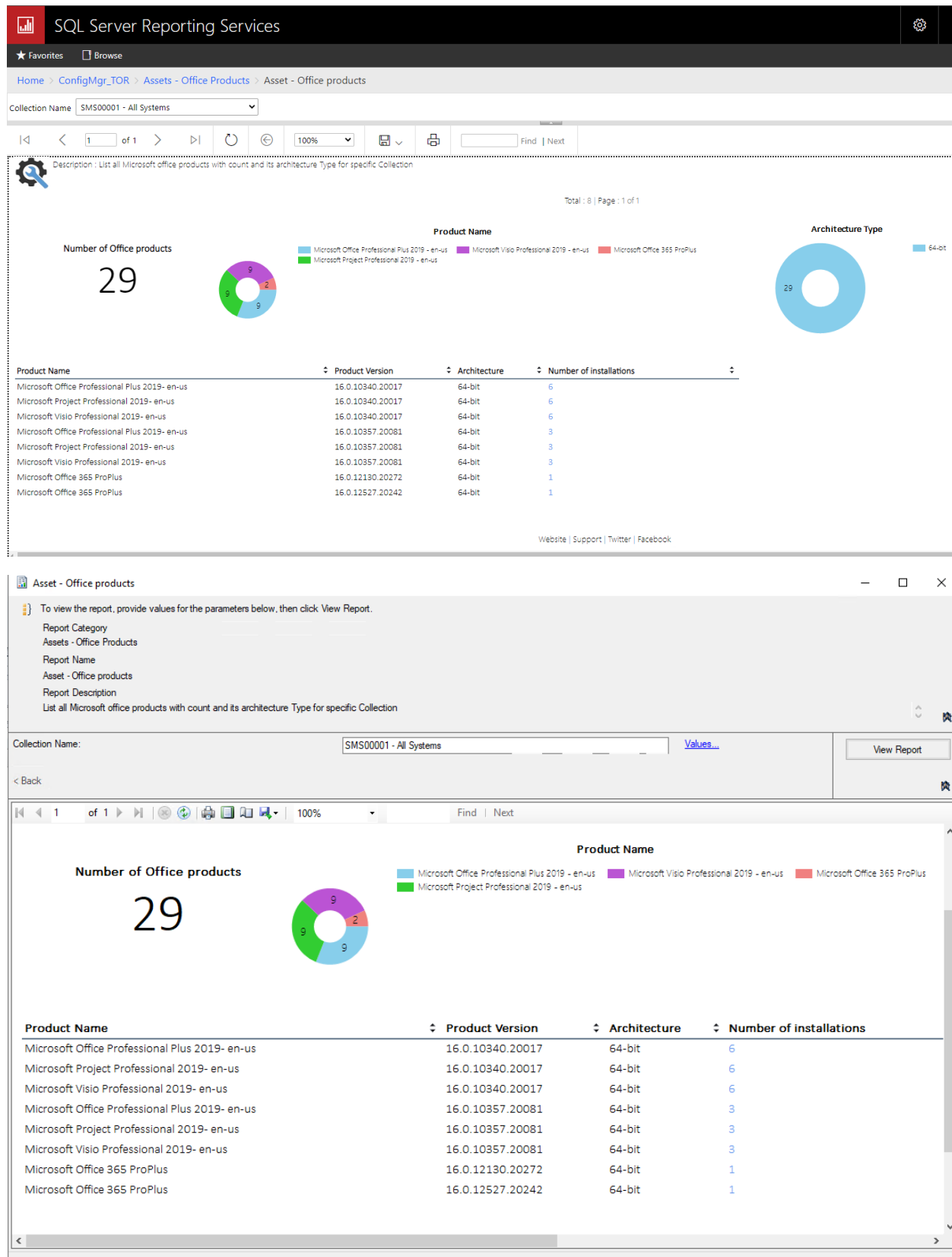
cb/ReportServer - /

Saturday, January 12, 2019 3:47 PM

<dir> [ConfigMgr_TOR](#)

Microsoft SQL Server Reporting Services Version 15.0.1102.675

All the reports are working fine.



This concludes SSRS 2019 upgrade.

Thanks

Ram Lan

5th April 2020