

# Installing Technical Preview 2001 – Configuration Manager

In this post, I will show you the steps for installing TP2001. After that we will go over the new features and its configuration. Enjoy!

Please visit below link to get more information about TP2001 released on 17<sup>th</sup> Jan 2020.

<https://docs.microsoft.com/en-us/configmgr/core/get-started/2020/technical-preview-2001>  
<https://techcommunity.microsoft.com/t5/configuration-manager-blog/monitor-new-microsoft-edge-usage-with-technical-preview-2001/ba-p/1121144>

You can see from below screen shot TP2001 is being downloaded. I am running TP1912 as of last year.

The screenshot shows the Configuration Manager console with the 'Updates and Servicing' view. The 'Updates and Servicing' pane on the left shows a list of updates. The 'Configuration Manager Technical Preview 2001' update is highlighted, showing its state as 'Downloading'. An arrow points to the 'Download' button in the top right corner of the console.

Name	Date Released	State	Prereq Only	Ignore Prereq Warning	Full Version	Client Version	Last Update Time
Configuration Manager Technical Preview 1912	11-Dec-2019 12:00 AM	Installed	No	Yes	5.00.8923.1000	5.00.8923.1000	13-Dec-2019 9:47 PM
Configuration Manager Technical Preview 2001	17-Jan-2020 12:00 AM	Downloading	No	No	5.00.8938.1000	5.00.8938.1000	21-Jan-2020 9:57 PM

The 'Configuration Manager Updates Wizard' is open, showing the 'General' tab. The wizard title is 'Configuration Manager Technical Preview 2001'. The text states: 'This wizard helps you configure and install this update. [Learn more.](#)'

**This version includes:**

- Configuration Manager site server updates
- Configuration Manager console updates
- Configuration Manager client updates
- Fixes for known issues
- New features

**Prerequisite warnings:**

☒ Ignore any prerequisite check warnings and install this update regardless of missing requirements.

[Privacy Statement](#)

Navigation buttons: < Previous, Next >, Summary, Cancel.



## Features

## General

## Features

## Client Update Options

## License Terms

## Summary

## Progress

## Completion

## Features included in update pack

This update pack includes the following features. Select the features you want to enable now. Features you don't enable now can be enabled later from the Updates and Servicing node of the Configuration Manager console.

- ☒ Enable third party update support on clients
- ☒ Device Health Attestation assessment for compliance policies for conditional access
- ☒ Package Conversion Manager
- ☒ Windows Defender Exploit Guard policy
- ☒ Microsoft Operations Management Suite (OMS) Connector
- ☒ Task Sequence Debugger
- ☒ Cloud Management Gateway
- ☒ Surface Driver Updates
- ☒ Passport for Work
- ☒ Application Groups

Description:

&lt; Previous

Next &gt;

Summary

Cancel



## Client Update Options

## General

## Features

## Client Update Options

## License Terms

## Summary

## Progress

## Completion

## Client Update Settings

This update includes an update for the Configuration Manager client. You can upgrade your clients immediately, or validate this client in a pre-production collection before you upgrade all your Configuration Manager clients.

☒ Upgrade without validating

Overwrites your current Configuration Manager client package with the new client update. All new client installations and client upgrades use this new client update.

☐ Validate in pre-production collection

Validate the client update on members of the pre-production collection while you keep your production client package intact. Later, you can overwrite the production package using Client Update Options in the Updates and Servicing node of the Configuration Manager console.

Pre-production collection:

Browse...

&lt; Previous

Next &gt;

Summary

Cancel



## License Terms

General

Features

Client Update Options

License Terms

Summary

Progress

Completion

## Review and accept the terms for this update pack

You must accept the License Terms and Privacy Statement to continue installation.

[View the License Terms](#)[View the Privacy Statement](#)

☒ I accept these License Terms and Privacy Statement.

You can add or update your Software Assurance expiration date. This date must be after 01-Oct-2016.

Software Assurance expiration date:

01-Jun-2020

[Learn more](#)

&lt; Previous

Next &gt;

Summary

Cancel



## Summary

General

Features

Client Update Options

License Terms

Summary

Progress

Completion

## Confirm the Settings

Details:

**Summary of update package installation**

Install Update Package Configuration Manager Technical Preview 2001  
Prerequisite warnings will be ignored  
Test new version of the client in production  
Software Assurance expiration date is 2020-06-01.

To change these settings, click Previous. To apply the settings, click Next.

&lt; Previous

Next &gt;

Summary

Cancel



## Completion

## General

Features

Client Update Options

License Terms

Summary

Progress

Completion



The Configuration Manager Updates Wizard completed successfully

## Details:

**Summary of update package installation**

Success: Install Update Package Configuration Manager Technical Preview 2001  
 Prerequisite warnings will be ignored  
 Test new version of the client in production  
 Software Assurance expiration date is 2020-06-01.

To exit the wizard, click Close.

&lt; Previous

Next &gt;

Summary

Close

The installation has started.

History | **Check for updates** | Refresh | Saved Searches | Install Update Pack | Run prerequisite check | Retry installation | Ignore prerequisite warnings | Promote Pre-production Client | Download

Updates and Servicing > Administration > Overview > Updates and Servicing

Administration > Updates and Servicing 2 items

Name	Date Released	State	Prereq Only	Ignore Prereq Warning	Full Version	Client Version	Last Update Time
Configuration Manager Technical Preview 1912	11-Dec-2019 12:00 AM	Installed	No	Yes	5.00.8923.1000	5.00.8923.1000	13-Dec-2019 9:47 PM
Configuration Manager Technical Preview 2001	17-Jan-2020 12:00 AM	Installing	No	Yes	5.00.8938.1000	5.00.8938.1000	21-Jan-2020 10:10 PM

**Updates and Servicing 2 items**

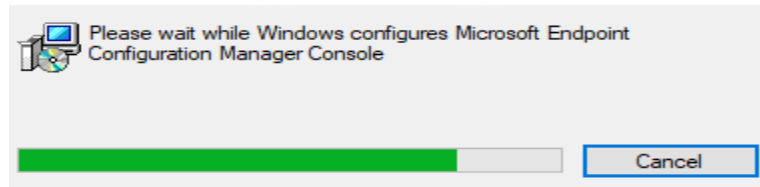
Name	Date Released	State	Prereq Only	Ignore Prereq Warning	Full Version	Client Version	Last Update Time
Configuration...	11-Dec-2019 1...	Installed	No	Yes	5.00.8923.1000	5.00.8923.1000	13-Dec-2019 9:47 PM
Configuration...	17-Jan-2020 1...	Checking prerequisites	No	Yes	5.00.8938.1000	5.00.8938.1000	21-Jan-2020 10:14 PM

✖ A new version of the console is available (5.2002.1026.1000). Working in the old console (5.2002.1012.1000) might corrupt data. [Install the new version](#)

Administration > Updates and Servicing 2 items

Name	Date Released	State	Prereq Only	Ignore Prereq Warning	Full Version	Client Version	Last Update Time
Configuration...	11-Dec-2019 1...	Installed	No	Yes	5.00.8923.1...	5.00.8923.1000	13-Dec-2019 9:47...
Configuration...	17-Jan-2020 1...	Checking prer...	No	Yes	5.00.8938.1...	5.00.8938.1000	21-Jan-2020 10:14...

## Microsoft Endpoint Configuration Manager Console



Updates and Servicing 0 items

Search							
Name	Date Released	State	Prereq Only	Ignore Prereq Warning	Full Version	Client Version	Last Update Time
Configuration Manager Technical Preview 2001	17-Jan-2020 12:00 AM	Installed	No	Yes	5.00.8938.1000	5.00.8938.1000	21-Jan-2020 11:14 PM



## Microsoft Endpoint Configuration Manager 2001 Tech Preview

### What's New in 2001

#### Improvements to administration service

Automatically use Configuration Manager-generated certificates for the administration service REST API, unless there's already a certificate bound to port 443.

#### Improvements to check readiness task sequence step

An administrator is now able to specify additional readiness verification in the check readiness task sequence step: New checks added include the architecture of the current OS, minimum and maximum OS versions, the minimum client version, the language of the current OS, whether AC power is plugged in and the network adapter state.

#### Microsoft Edge Management dashboard

The Microsoft Edge Management dashboard provides insights on the usage of Microsoft Edge and other browsers. In this dashboard, you can see how many of your devices have Microsoft Edge installed, how many devices have different versions of Microsoft Edge installed, and you have a view of the installed browsers across devices.

#### OneTrace Log groups

OneTrace now support customizable log groups. Log groups allow you to open all log files associated together with a single feature. You can customize these groupings using a template.

#### Power BI Report Server Integration

Configuration Manager now supports integration of Power BI Report Server with Configuration Manager reporting. You can now save Power BI Desktop report files and easily deploy them to the Power BI Report Server like SSRS RDL files. You can also launch the reports in the browser directly from the Configuration Manager console.

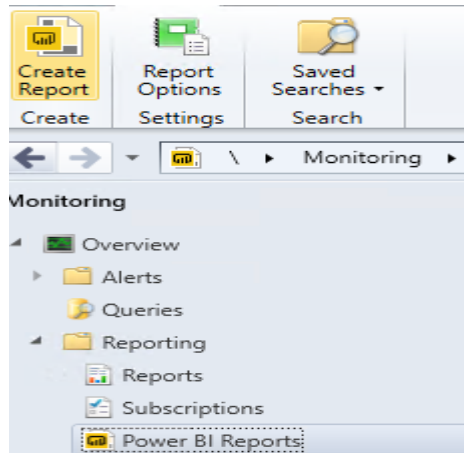
#### Wake up a device from the central administration site

You can now use the client notification action to wake up a device from the central administration site.

# NEW FEATURES:

## Power BI Reports

You can now integrate [Power BI Report Server](#) with Configuration Manager reporting. This integration gives you modern visualization and better performance. It adds console support for Power BI reports similar to what already exists with SQL Server Reporting Services.



### Prerequisites and initial setup

- Power BI Report Server license. For more information, see [Licensing Power BI Report Server](#).
- Download [Microsoft Power BI Report Server-September 2019](#).
- Download [Microsoft Power BI Desktop \(Optimized for Power BI Report Server - September 2019\)](#).

#### Important

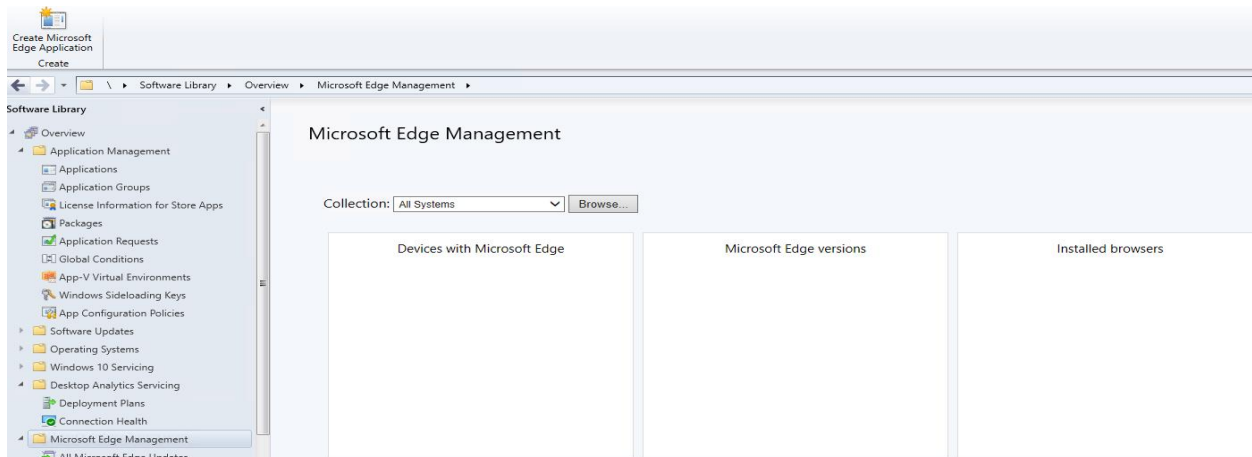
Only use this version of Power BI Desktop, don't use the version from the Microsoft Store.

- [Configure the reporting services point](#)
- [Configure the Configuration Manager console](#)

## Microsoft Edge Dashboard

The Microsoft Edge Management dashboard provides you insights on the usage of Microsoft Edge and other browsers. In this dashboard, you can:

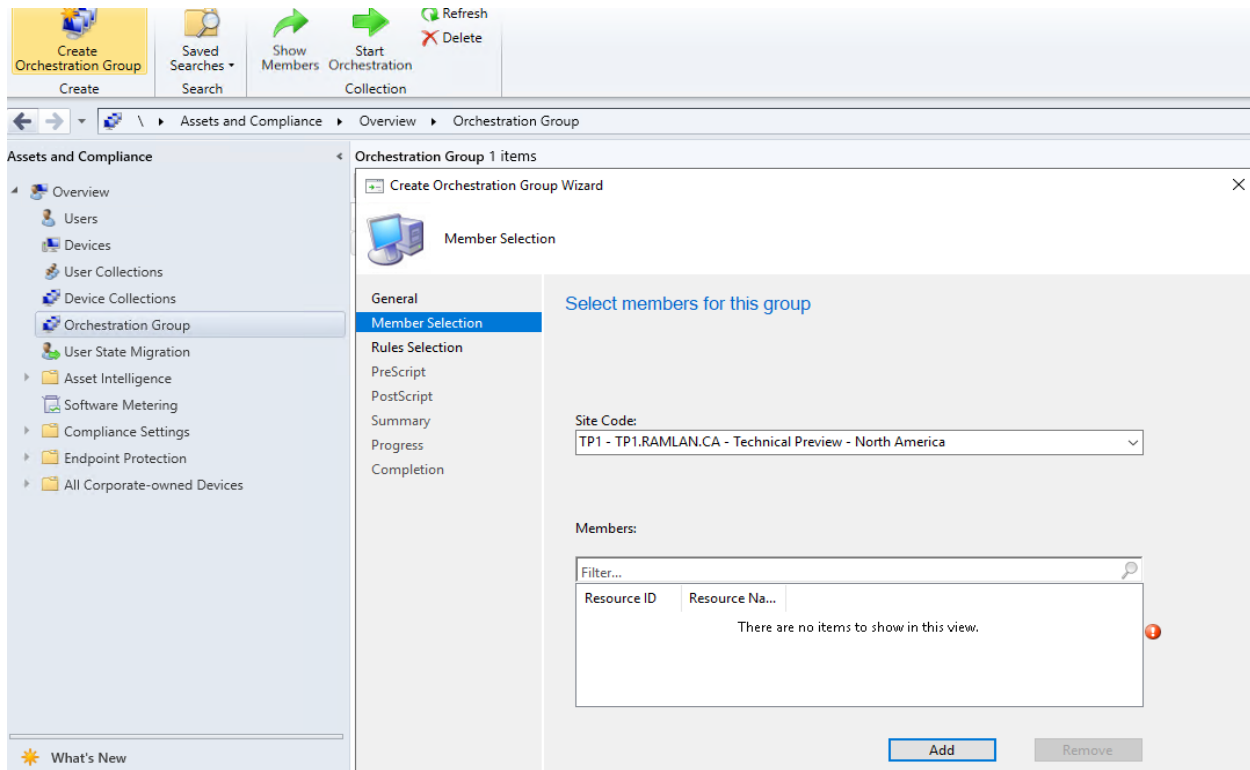
- See how many of your devices have Microsoft Edge installed
- See how many clients have different versions of Microsoft Edge installed
- Have a view of the installed browsers across devices



## Improvements in Orchestrator Group

Orchestration Groups are the evolution of the "Server Groups" feature. They were first introduced in the [technical preview for Configuration Manager, version 1909](#). In this technical preview, we've added the following improvements to Orchestration Groups:

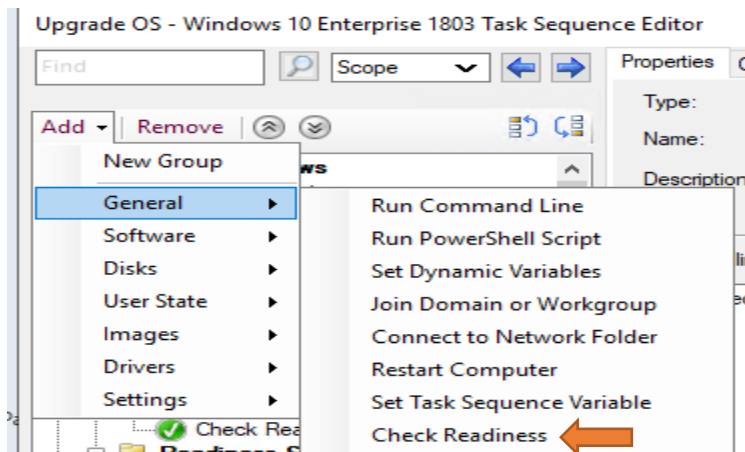
- You can now specify custom timeout values for:
  - The Orchestration Group
    - Time limit for all group members to complete update installation
  - Orchestration Group members
    - Time limit for a single device in the group to complete the update installation
- When selecting group members, you now have a drop-down list to select the site code.



## Improvements to check readiness task sequence

You can now verify more device properties in the [Check Readiness](#) task sequence step. Use this step in a task sequence to verify the target computer meets your prerequisite conditions.

- **Architecture of current OS:** 32-bit or 64-bit
- **Minimum OS version:** for example, 10.0.16299
- **Maximum OS version:** for example, 10.0.18356
- **Minimum client version:** for example, 5.00.08913.1005
- **Language of current OS:** select the language name, the step compares the associated language code
- **AC power plugged in**
- **Network adapter connected**
  - Network adapter is not wireless



The screenshot shows the 'Check Readiness' properties window. The 'Type' and 'Name' fields are both set to 'Check Readiness'. The 'Description' field is empty. Below the fields, there is a section titled 'Select requirements that must be ensured for this step to succeed:'. The requirements are listed with checkboxes and values:

- ☒ Minimum memory (MB): 512
- ☒ Minimum processor speed (MHz): 800
- ☒ Minimum free disk space (MB): 25000
- ☒ Current OS to be refreshed is: CLIENT
- ☐ Architecture of current OS: 64-bit
- ☐ Minimum OS version: \_\_\_\_\_
- ☐ Maximum OS version: \_\_\_\_\_
- ☐ Minimum client version: \_\_\_\_\_
- ☐ Language of current OS: English (United States)
- ☐ AC power plugged in
- ☐ Network adapter connected
- ☐ Network adapter is not wireless

A large blue arrow points from the requirements section towards the left.

## OneTrace Log Groups

Log groups allow you to open all log files for a single scenario. You can install OneTrace from here -

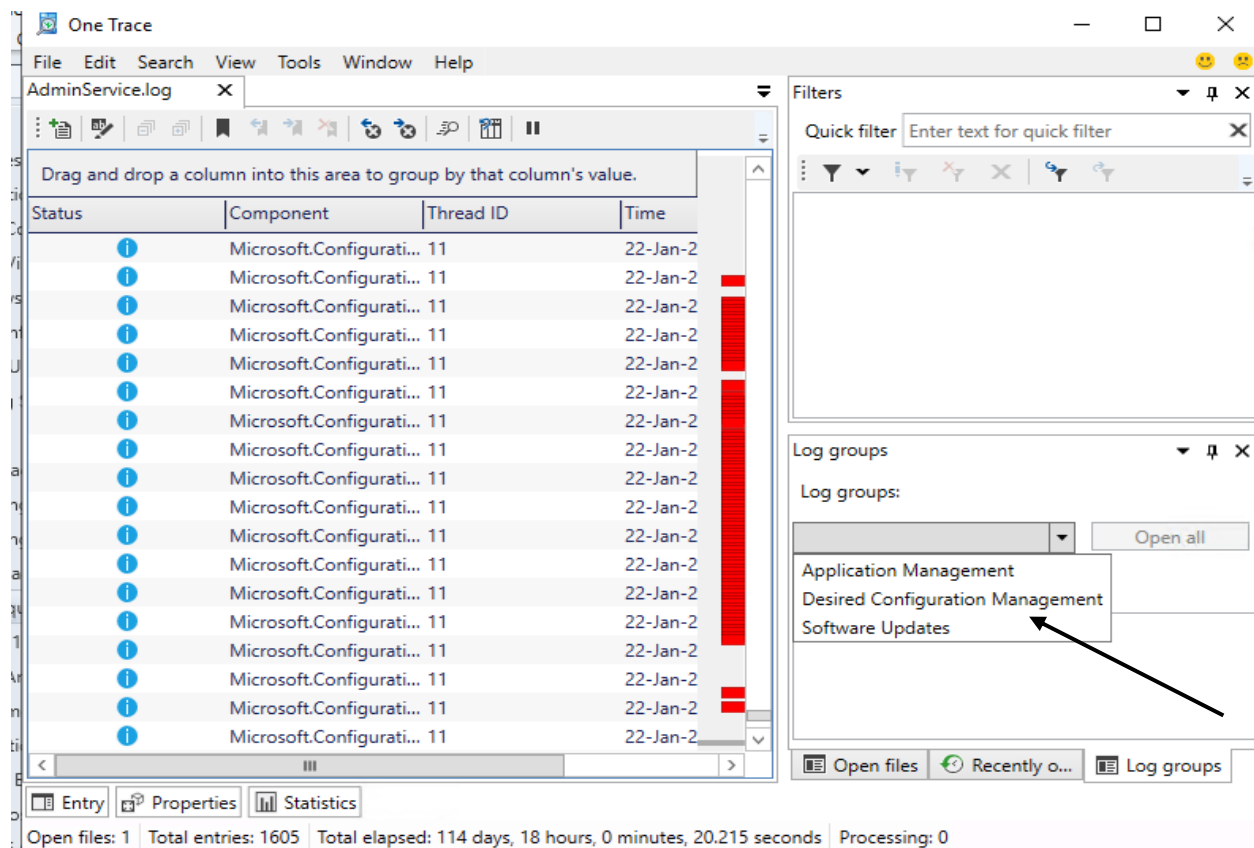
« OS (C:) » Program Files » Microsoft Configuration Manager » cd.latest » SMSSETUP » TOOLS » SupportCenter

Name	Date modified	Type	Size
SupportCenterInstaller	17-Jan-2020 3:02 P...	Windows Installer...	5,076 KB

OneTrace currently includes groups for the following scenarios:

- Application management
- Compliance settings (also referred to as Desired Configuration Management)
- Software updates





## Customize OneTrace log groups

You can customize these groups by modifying the configuration XML, which by default is in the following path:

C:\Program Files (x86)\Configuration Manager Support Center\LogGroups.xml.

The following example is one portion of the default configuration file:

```
XML
Copy

<LogGroups>
  <LogGroup Name="Desired Configuration Management" GroupType="1" GroupFilePath="">
    <LogFile>CIAgent.log</LogFile>
    <LogFile>CIDownloader.log</LogFile>
    <LogFile>CISTateStore.log</LogFile>
    <LogFile>CISTore.log</LogFile>
    <LogFile>CITaskMgr.log</LogFile>
    <LogFile>ccmsdkprovider.log</LogFile>
    <LogFile>DCMAgent.log</LogFile>
    <LogFile>DCMReporting.log</LogFile>
    <LogFile>DcmWmiProvider.log</LogFile>
  </LogGroup>
</LogGroups>
```

The `GroupType` property accepts the following values:

- 0: Unknown or other
- 1: Configuration Manager client logs
- 2: Configuration Manager server logs

## Improvements in Administration Service

The [administration service](#) is a REST API for the SMS Provider. Previously, you had to implement one of the following dependencies:

- Enable Enhanced HTTP for the entire site
- Manually bind a PKI-based certificate to IIS on the server that hosts the SMS Provider role

Starting in this release, the administration service automatically uses the site's self-signed certificate. This change helps reduce the friction for easier use of the administration service. The site always generates this certificate. The Enhanced HTTP site setting to **Use Configuration Manager-generated certificates for HTTP site systems** only controls whether site systems use it or not. Now the administration service ignores this site setting, as it always uses the site's certificate even if no other site system is using Enhanced HTTP.

The only exception is if you've already bound a PKI certificate to port 443 on the SMS Provider server. If you added a certificate, the administration service uses that existing certificate.

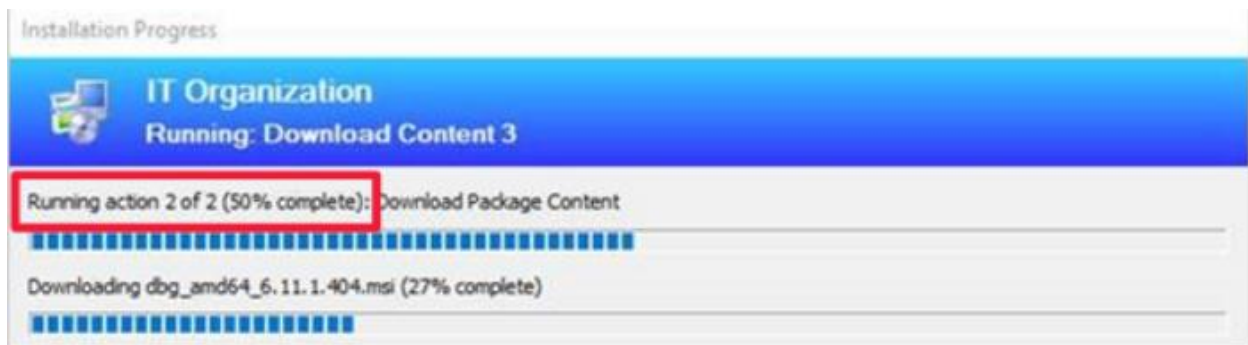
## Wake up device from CAS

When you start this action from the CAS, it sends a fast message to the primary site to which the client is assigned. The primary site then processes the action as normal. Once the primary site receives an updated status from the client, it reports that status to the CAS.

## Improvement in Task Sequence Progress

Based on your [UserVoice feedback](#), the task sequence progress window includes the following improvements:

- Show the current step number, total number of steps, and percent completion
- Increased the width of the window to give you more space to better show the organization name in a single line



This concludes all the new features in TP2001

Thanks

Ram Lan

22<sup>nd</sup> Jan 2020