

DELL INTEGRATION SUITE

In this post, I will show you the steps involved in installing the following:




1. Dell Command Integration Suite for Configuration Manager (DCIS) -
<https://www.dell.com/support/home/ca/en/cabsdt1/drivers/driversdetails?driverid=79TR1>
2. Dell Command Monitor (DCM) -
<https://www.dell.com/support/article/ca/en/cabsdt1/sln311855/dell-command-monitor?lang=en>
3. Dell Command Configure (DCC) -
<https://www.dell.com/support/article/ca/en/cabsdt1/sln311302/dell-command-configure?lang=en>
4. Dell Command Deploy Driver Packs for Enterprise Client OS Deployment -
<https://www.dell.com/support/article/ca/en/cabsdt1/sln312414/dell-command-deploy-driver-packs-for-enterprise-client-os-deployment?lang=en>

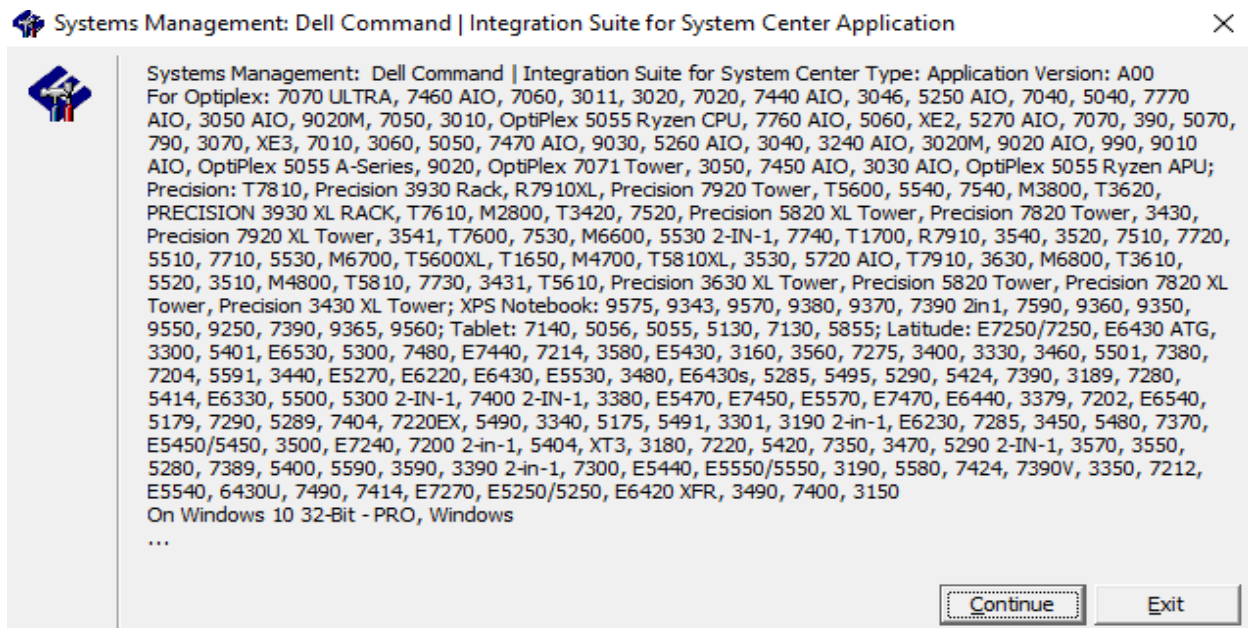
I will be covering 1-2 only for now. May be at a later date another blog to cover 3-4. Enjoy the ride!

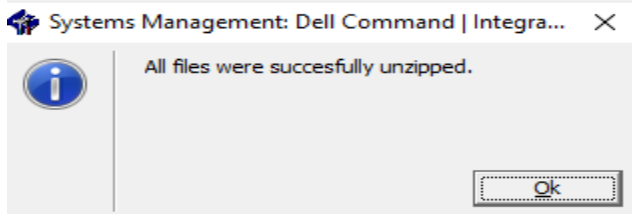
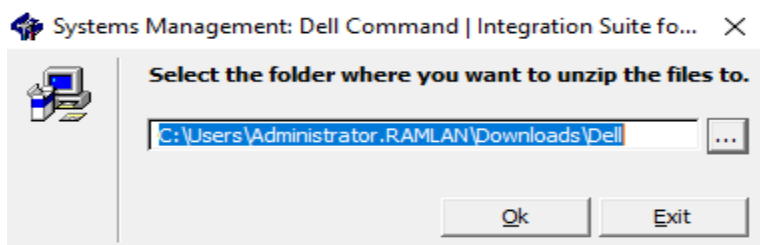
I have downloaded all of the files to a folder called Dell and saved it on Configuration Manager Server. I will be installing Integration Suite on the Configuration Manager Server (CB.RAMLAN.CA). Here it is

Run DCIS.29.ZPE.exe


CB > Downloads > Dell

Name	Date modified	Type	Size
 DCIS 29 ZPE.exe	18-Jan-2020 12:52 ...	Application	22,758 KB
 Dell-Command-Configure DX4T3 WIN 4.2.1.568 A00.EXE	18-Jan-2020 12:53 ...	Application	36,528 KB
 Dell-Command-Monitor 70PH6 WIN 10.2.1.80 A00.EXE	18-Jan-2020 12:53 ...	Application	36,582 KB





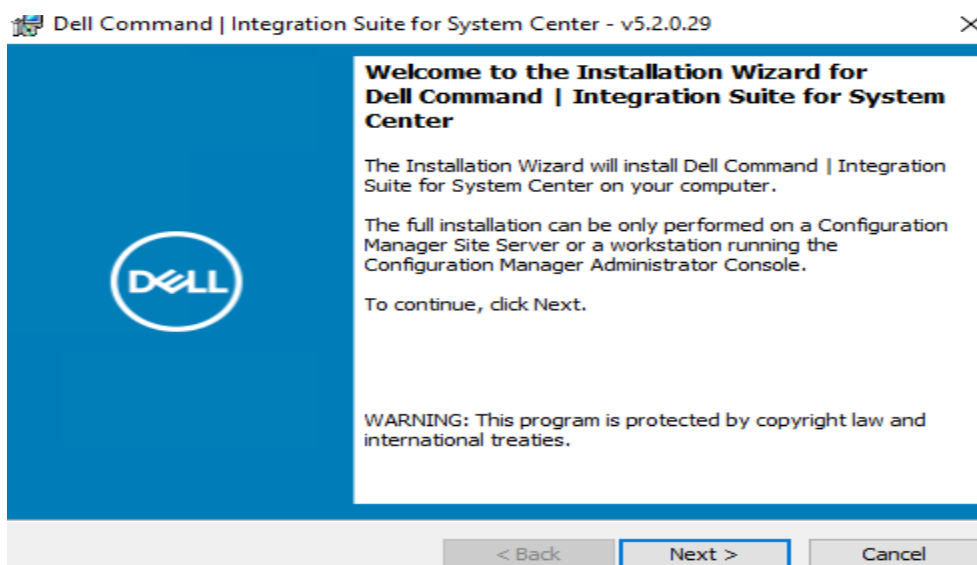
Run DCIS Setup 5.2.0.exe

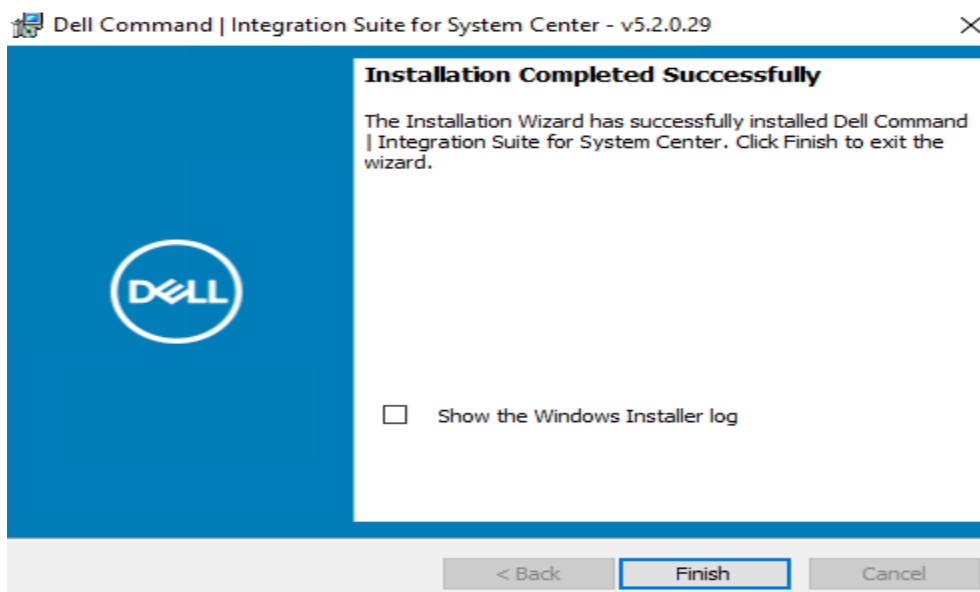
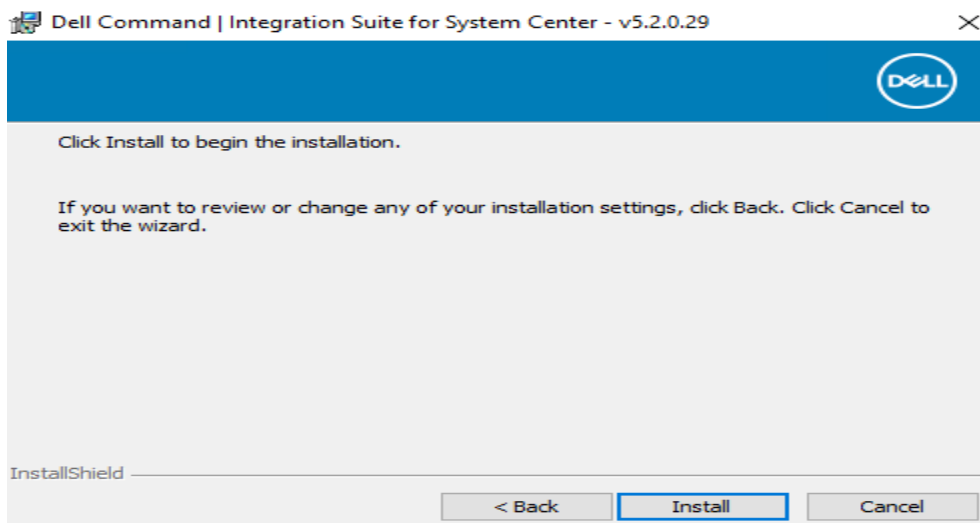
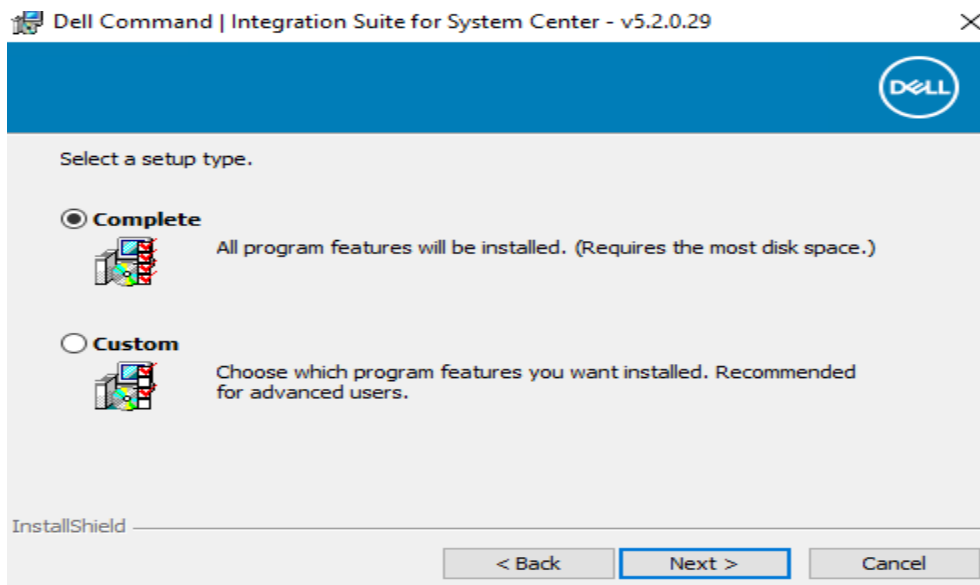
 [DCIS Setup 5 2 0.exe](#)

[05-Dec-2019 5:47 ...](#)

[Application](#)

[23,250 KB](#)












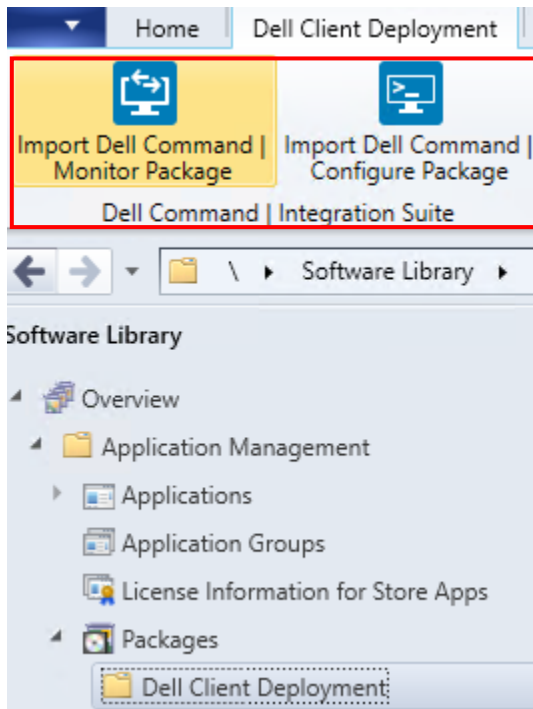
Uninstall or change a program

To uninstall a program, select it from the list and then click Uninstall, Change, or Repair.

Organize ▾ Uninstall Change Repair

Name	Publisher	Installed On	Size	Version
 Active Directory Authentication Library for SQL Server	Microsoft Corporation	06-Jan-2019	1.78 MB	14.0.3015.40
 Adobe Acrobat Reader DC	Adobe Systems Incorporated	23-Feb-2019	338 MB	15.007.20033
 Browser for SQL Server 2017	Microsoft Corporation	22-Dec-2019	55.1 MB	14.0.1000.169
 Classic Shell	IvoSoft	30-Dec-2018	13.1 MB	4.3.0
 CMMMap	TondtWare	13-Jan-2019	5.34 MB	2.2
 Configuration Manager Support Center	Microsoft Corporation	12-Aug-20...	14.0 MB	5.1906.1000.1024
 Dell Command Integration Suite for System Center	Dell Inc.	18-Jan-2020	64.2 MB	5.2.0.29

Open SCCM console, go to Software Library>Application Management>Packages. On the top you can see two additional menus for Dell.

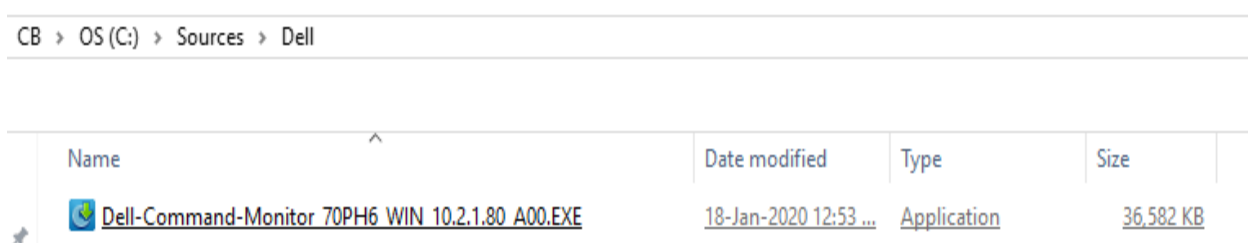


After integrating the Dell Command Suite within SCCM, you can perform Dell Command Monitor deployment to your clients to get more details about Dell hardware inventory.

The Dell Command Monitor is designed for Dell Enterprise Client systems, Dell IoT Gateway systems, Dell Embedded PCs. Furthermore, with Dell Command Monitor, system administrators can remotely manage assets, monitor system health, and inventory deployed systems in an enterprise.

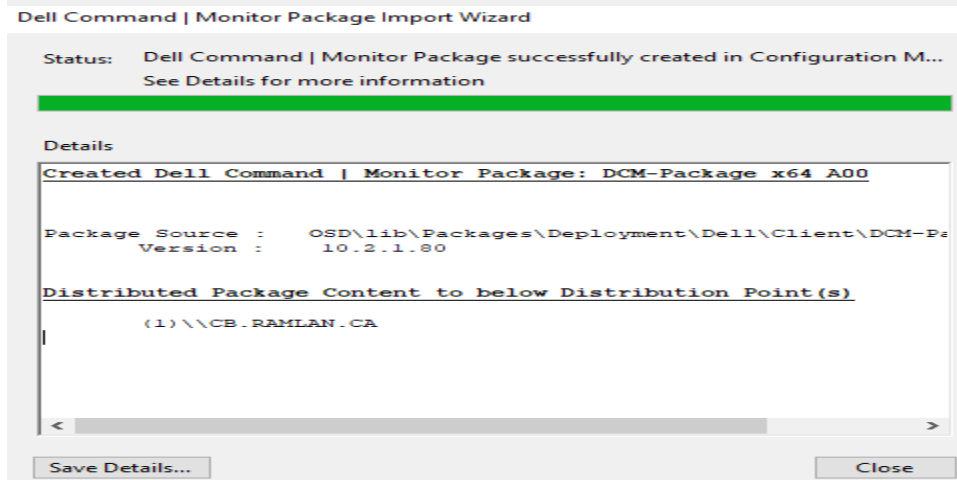
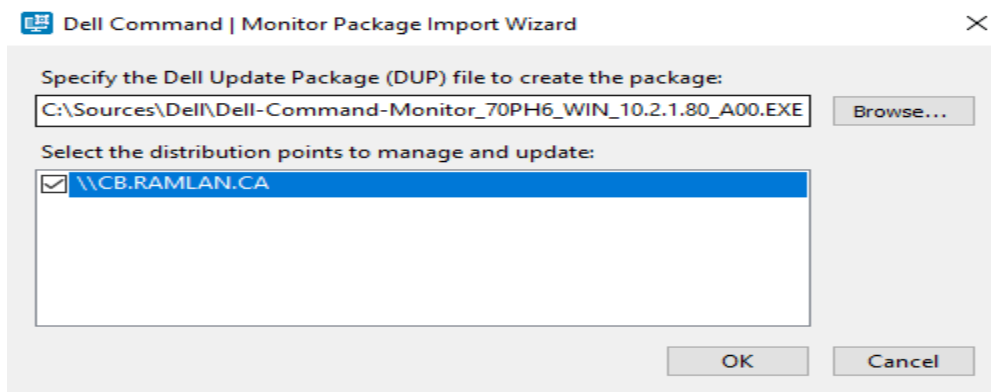
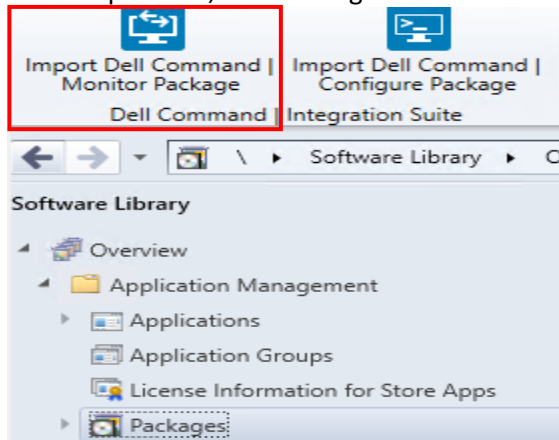
The Process of installing DCM as a package is explained below.

Copy this file to Sources folder.

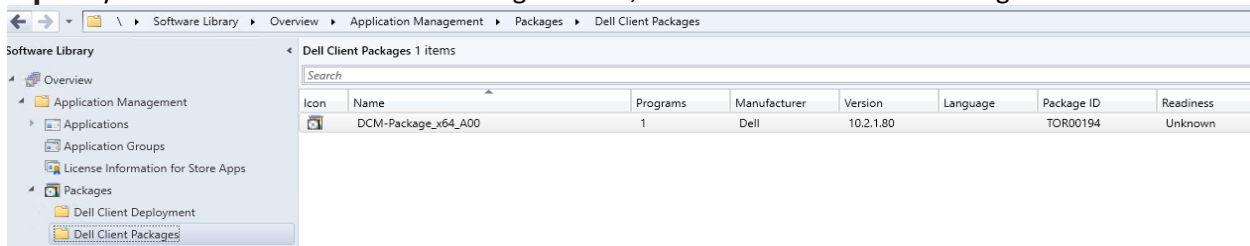


Go to Software Library > Application Management > Packages.

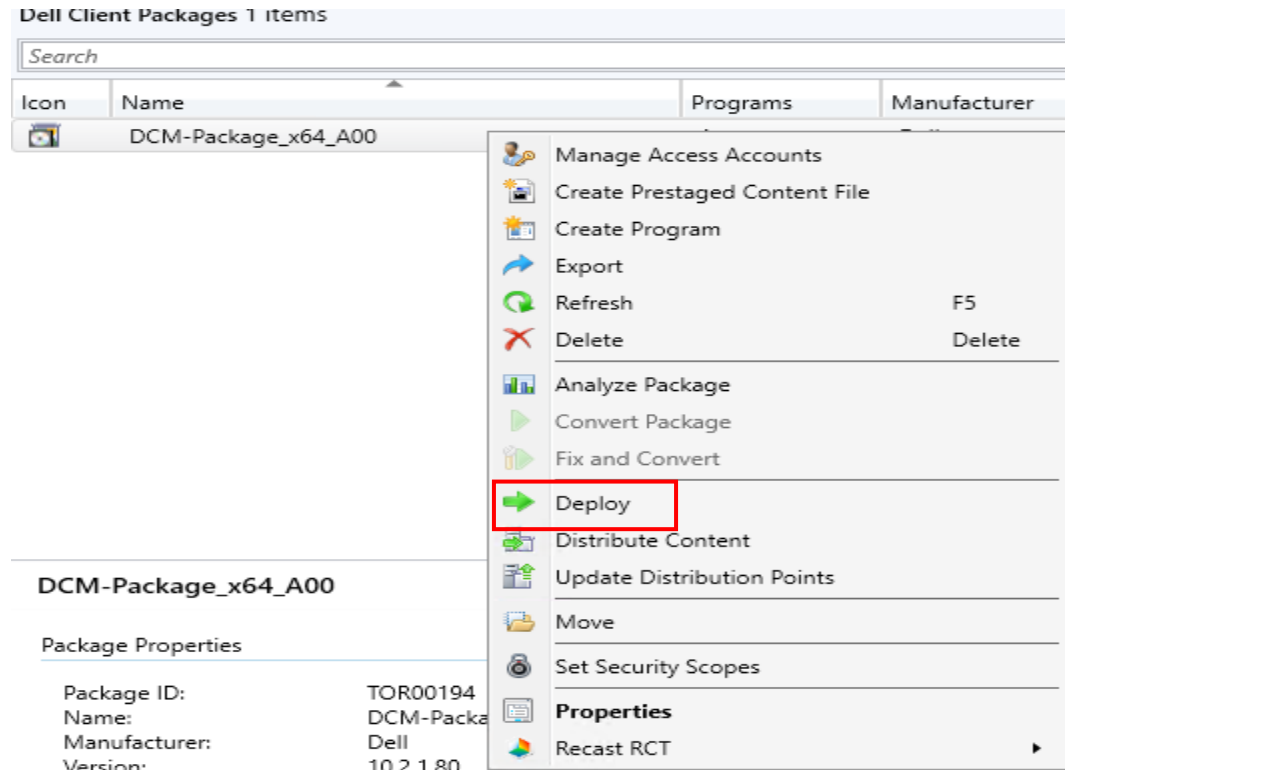
In the top ribbon, click Packages Tab and click to Import Dell Command Monitor Package.



Tip – If you don't see the Dell Client Packages folder, close the console and check again.



Now we can deploy above package to all Dell clients within the enterprise.



The screenshot shows the 'Dell Client Packages' console. A table lists packages, with 'DCM-Package_x64_A00' selected. A right-click context menu is open, and the 'Deploy' option is highlighted with a red rectangle. Below the table, the package properties are displayed: Package ID: TOR00194, Name: DCM-Package_x64_A00, Manufacturer: Dell, Version: 10.2.1.80.

Icon	Name	Programs	Manufacturer
	DCM-Package_x64_A00		

DCM-Package_x64_A00

Package Properties

Package ID: TOR00194
Name: DCM-Package_x64_A00
Manufacturer: Dell
Version: 10.2.1.80

Deploy Software Wizard

General

Specify general information for this deployment

Software: DCM-Package_x64_A00 (Dell Command | Monitor Launcher) Browse...

Collection: Dell Clients Win 10 Browse...

☐ Use default distribution point groups associated to this collection

☐ Automatically distribute content for dependencies

Comments (optional):

< Previous Next > Summary Cancel



Content

General

Content

Deployment Settings

Scheduling

User Experience

Distribution Points

Summary

Progress

Completion

Specify the content destination

Distribution points or distribution point groups that the content has been distributed to:

Name	Type
\\CB.RAMLAN.CA	Distribution point

Additional distribution points, distribution point groups, and the distribution point groups that are currently associated with collections to distribute content to:

Filter...			Add ▾
Name	Description	Associations	Remove
Toronto	Distribution point group	0	

< Previous

Next >

Summary

Cancel



Deployment Settings

General

Content

Deployment Settings

Scheduling

User Experience

Distribution Points

Summary

Progress

Completion

Specify settings to control how this software is deployed

Action: Install ▾

Purpose: Required ▾

☐ Pre-deploy software to the user's primary device☐ Send wake-up packets☐ Allow clients on a metered Internet connection to download content after the installation deadline, which might incur additional costs

< Previous

Next >

Summary

Cancel



Scheduling

General
Content
Deployment Settings
Scheduling
User Experience
Distribution Points
Summary
Progress
Completion

Specify the schedule for this deployment

This program will be available as soon as it has been distributed to the content servers unless it is scheduled for a later time below. For required applications, specify the assignment schedule.

☐ Schedule when this deployment will become available:

18-Jan -2020 1:31 PM ☐ UTC

☐ Schedule when this deployment will expire:

18-Jan -2020 1:31 PM ☐ UTC

Assignment schedule:

New...

Edit...

Delete

There are no items to show in this view.

Rerun behavior:

Always rerun program

< Previous

Next >

Summary

Cancel



User Experience

General
Content
Deployment Settings
Scheduling
User Experience
Distribution Points
Summary
Progress
Completion

Specify the user experience for the installation of this software on the selected devices

Notification settings:

☒ Allow users to run the program independently of assignments

When the scheduled assignment time is reached, allow the following activities to be performed outside the maintenance window:

☐ Software installation

☐ System restart (if required to complete the installation)

Write filter handling for Windows Embedded devices

☒ Commit changes at deadline or during a maintenance window (requires restarts)

If this option is not selected, content will be applied on the overlay and committed later.

< Previous

Next >

Summary

Cancel



Distribution Points

General

Content

Deployment Settings

Scheduling

User Experience

Distribution Points

Summary

Progress

Completion

Specify how to run the content for this program according to the type of boundary the client is connected to

Select the deployment option to use when a client uses a distribution point from a current boundary group.

Deployment options:

Download content from distribution point and run locally

Select the deployment option to use when a client uses a distribution point from a neighbor boundary group or the default site boundary group.

Deployment options:

Download content from distribution point and run locally

When this content is not available on any distribution points in current and neighbor boundary groups, you can allow the client to use a distribution point in site default boundary group.

☐ Allow clients to use distribution points from the default site boundary group

< Previous

Next >

Summary

Cancel



Summary

General

Content

Deployment Settings

Scheduling

User Experience

Distribution Points

Summary

Progress

Completion

Confirm the settings for this new deployment

Details:

General

- Software: DCM-Package_x64_A00 (Dell Command | Monitor Launcher)
- Collection: Dell Clients Win 10 (Member Count: 0)
- Use default distribution point groups associated to this collection: Disabled
- Automatically distribute content for dependencies: Disabled

Deployment Settings

- Action: Install
- Purpose: Available
- Allow clients to use a metered Internet connection to download content: Disabled

Scheduling

- Schedule when this deployment will become available: Disabled
- Schedule when this deployment will expire: Disabled
- Rerun behavior: Always rerun program

User Experience

- Allow users to run the program independently of assignments: Enabled
- Software installation: Disabled
- System restart (if required to complete the installation): Disabled
- Allow task sequence to run for client on the Internet: Disabled
- Commit changes at deadline or during a maintenance window (requires restarts): Enabled

Distribution Points

- Select the deployment option to use when a client uses a distribution point from a current boundary group.: Download content from distribution point and run locally

To change these settings, click Previous. To apply the settings, click Next.

< Previous

Next >

Summary

Cancel



Completion

General
Content
Deployment Settings
Scheduling
User Experience
Distribution Points
Summary
Progress
Completion



The Deploy Software Wizard completed successfully

Details:

- ✓ Success: General
 - Software: DCM-Package_x64_A00 (Dell Command | Monitor Launcher)
 - Collection: Dell Clients Win 10 (Member Count: 0)
 - Use default distribution point groups associated to this collection: Disabled
 - Automatically distribute content for dependencies: Disabled
- ✓ Success: Deployment Settings
 - Action: Install
 - Purpose: Available
 - Allow clients to use a metered Internet connection to download content: Disabled
- ✓ Success: Scheduling
 - Schedule when this deployment will become available: Disabled
 - Schedule when this deployment will expire: Disabled
 - Rerun behavior: Always rerun program
- ✓ Success: User Experience
 - Allow users to run the program independently of assignments: Enabled
 - Software installation: Disabled
 - System restart (if required to complete the installation): Disabled
 - Allow task sequence to run for client on the Internet: Disabled
 - Content-based scheduling and user experience (if required): Enabled

To exit the wizard, click Close.

< Previous

Next >

Summary

Close

After you run Machine Policy refresh – You will see DCM package is available for install.



Configuration Manager Properties



Cache

Configurations

Network

General

Components

Actions

Site

Select an action to run a client cycle independently from schedules that are configured in the Configuration Manager console.

Actions:

Application Deployment Evaluation Cycle
Discovery Data Collection Cycle
File Collection Cycle
Hardware Inventory Cycle
Machine Policy Retrieval & Evaluation Cycle
Software Inventory Cycle
Software Metering Usage Report Cycle
Software Updates Deployment Evaluation Cycle
Software Updates Scan Cycle
User Policy Retrieval & Evaluation Cycle
Windows Installer Source List Update Cycle

Run Now

OK

Cancel

Apply



Applications 1

- Updates
- Operating Systems
- Installation status
- Device compliance
- Options
- Personal

All Required

Filter: All

Sort by: Most recent



DCM-
Package_x64_A00...
Dell
10.2.1.80



Maxthon
5.3.8.2000
Maxthon Internation...
5.3.8.2000



Google Chrome
78.0.3904.87
Google LLC
78.0.3904.87



7-Zip (MSI-x64)
Igor Pavlov
19.00



Applications 1

- Updates
- Operating Systems
- Installation status
- Device compliance
- Options
- Personal

Applications > Application details



DCM-Package_x64_A00 - Dell Command | Monitor Launcher

Published by Dell

Install

Status: Available
Version: 10.2.1.80
Date published: 18-Jan-2020

Restart required: No
Download size: 35 MB
Estimated time: Not specified
Total components: 1



Applications 1

- Updates
- Operating Systems
- Installation status
- Device compliance
- Options
- Personal

Applications > Application details



DCM-Package_x64_A00 - Dell Command | Monitor Launcher

Published by Dell

Reinstall

Status: Installed
Version: 10.2.1.80
Date published: 18-Jan-2020

Restart required: No
Download size: 35 MB
Estimated time: Not specified
Total components: 1

After deploying Dell Command Monitor to Dell machines, we need to import related MOF file to SCCM Hardware Inventory classes to get more details.

To get the OMCI_SMS_DEF.mof file browse on Dell machine

C:\Program Files\Dell\Command_Monitor\ssa\omacim\OMCI_SMS_DEF.mof

CB > OS (C:) > Program Files > Dell > Command Monitor > ssa > omacim >

Name	Date modified	Type	Size
bin	18-Jan-2020 1:41 P...	File folder	
event	18-Jan-2020 1:41 P...	File folder	
log	18-Jan-2020 1:41 P...	File folder	
mofs	18-Jan-2020 1:41 P...	File folder	
xmlreg	18-Jan-2020 1:41 P...	File folder	
xslroot	18-Jan-2020 1:41 P...	File folder	
OMCI_SMS_DEF.mof	18-Dec-2019 5:02 ...	MOF File	35 KB

In the SCCM console, go to Administration > Client Settings. Right click Default Client Settings and click Properties.

The screenshot shows the SCCM console interface. At the top, the 'Client Settings' pane is visible with a search bar and a list of settings. The 'Default Client Settings' is selected, and its 'Properties' are being viewed. The 'Default Settings' window is open, showing the 'Device Settings' section. The 'Enable hardware inventory on clients' checkbox is checked, and the 'Hardware inventory schedule' is set to 'Occurs every 7 days effective 01-Feb-1970 12:00 AM'. The 'Maximum random delay (minutes)' is set to 240, and the 'Maximum custom MIF file size (KB)' is set to 250. The 'Hardware inventory classes' button is highlighted with a red box, and the 'Collect MIF files' dropdown is set to 'None'.

Client Settings

Search

Icon	Name	Type	F
	Default Client Settings	Default	
	Endpoint	Properties	

☒ Default Settings

Default Settings

☒ Specify settings that apply to all clients in the hierarchy, and can be modified by custom settings.

Specify hardware inventory settings for client computers.

Device Settings

☒ Enable hardware inventory on clients Yes

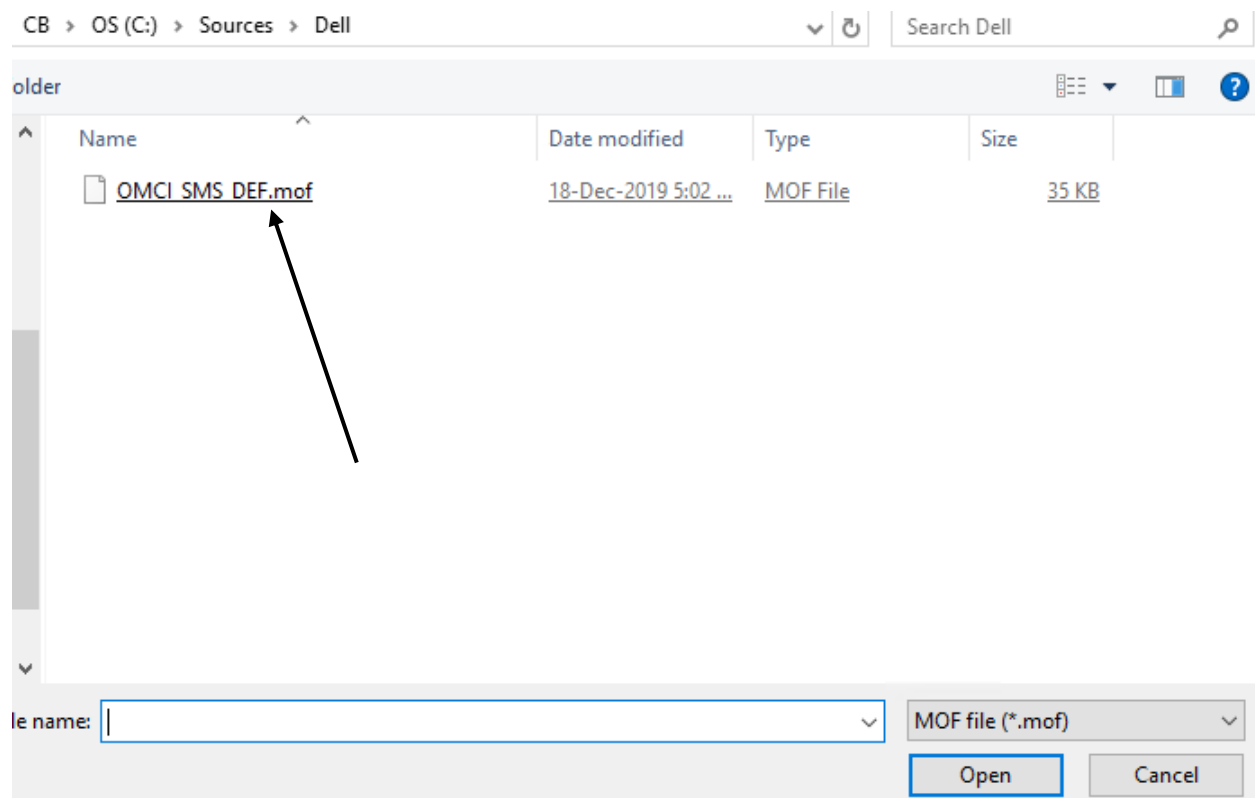
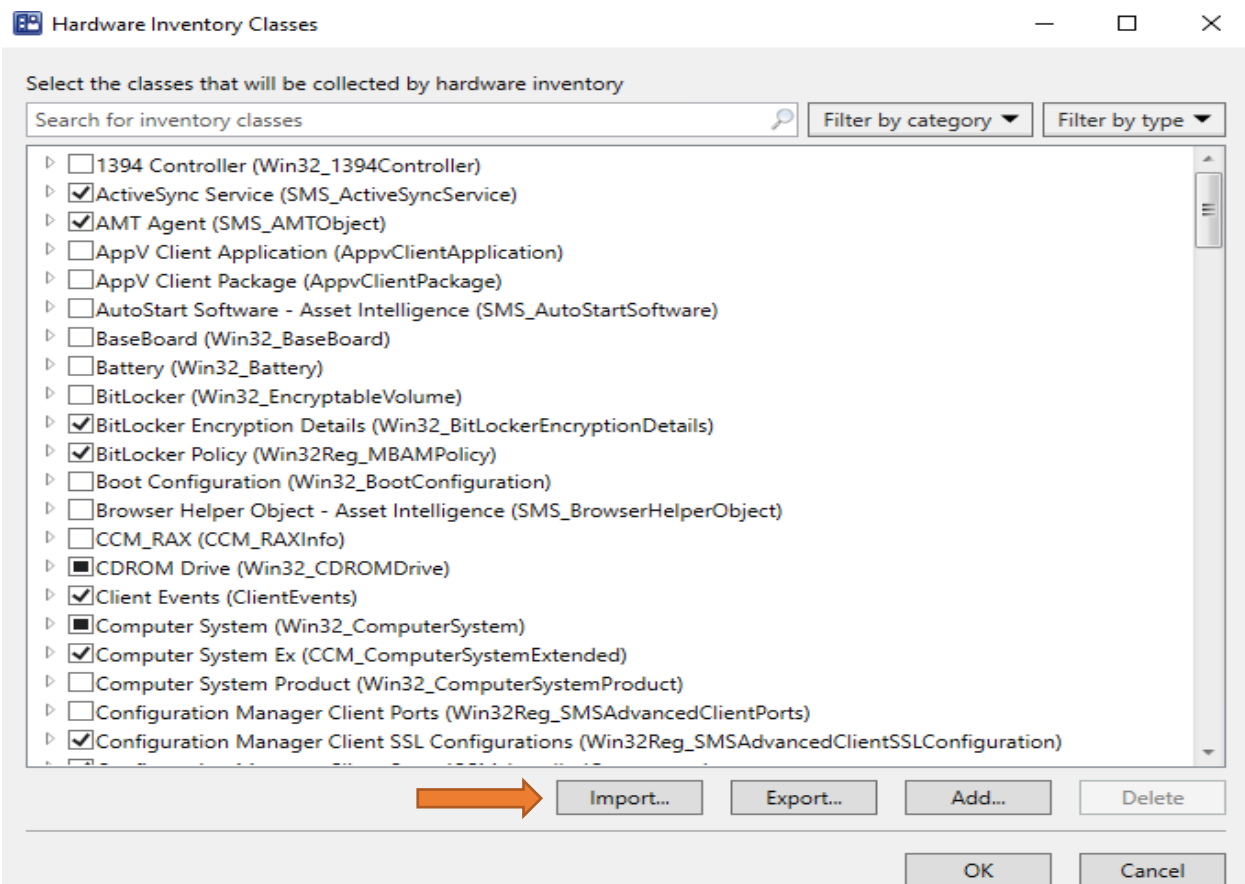
Hardware inventory schedule Occurs every 7 days effective 01-Feb-1970 12:00 AM Schedule ...

Maximum random delay (minutes) 240

Maximum custom MIF file size (KB) 250

Hardware inventory classes Set Classes ...

Collect MIF files None



Import Summary

Select the inventory items you want to install

- ☒ Import both hardware inventory classes and hardware inventory class settings
☐ Import hardware inventory classes only
☐ Import hardware inventory class settings only



The following hardware inventory classes are found in the import file:

The following classes will be added:

DCIM Alert Indication Setting Data (DCIM_AlertIndicationSettingData)
DCIM AMTSettings (DCIM_AMTSettings)
DCIM ASFSettings (DCIM_ASFSettings)
DCIM Asset Warranty Information (DCIM_AssetWarrantyInformation)
DCIM Battery (DCIM_Battery)
DCIM BIOS Enumeration (DCIM_BIOSEnumeration)
DCIM BIOSElement (DCIM_BIOSElement)
DCIM BIOSPassword (DCIM_BIOSPassword)
DCIM BIOSService (DCIM_BIOSService)
DCIM BIOSString (DCIM_BIOSString)
DCIM Boot Config Setting (DCIM_BootConfigSetting)
DCIM Boot Service (DCIM_BootService)
DCIM Boot Source Setting (DCIM_BootSourceSetting)
DCIM Button (DCIM_Button)
DCIM Card (DCIM_Card)
DCIM Chassis and Docking (DCIM_Chassis)
DCIM Chip (DCIM_Chip)
DCIM Computer System (DCIM_ComputerSystem)
DCIM Concrete Job (DCIM_ConcreteJob)
DCIM Controller View (DCIM_ControllerView)
DCIM Desktop Monitor (DCIM_DesktopMonitor)
DCIM Device Bay (DCIM_DeviceBay)



Import

Cancel

Hardware Inventory Classes

Select the classes that will be collected by hardware inventory

Search for inventory classes

Filter by category

Filter by type

- ☒ DCIM Alert Indication Setting Data (DCIM_AlertIndicationSettingData)
- ☒ DCIM AMTSettings (DCIM_AMTSettings)
- ☒ DCIM ASFSettings (DCIM_ASFSettings)
- ☒ DCIM Asset Warranty Information (DCIM_AssetWarrantyInformation)
- ☒ DCIM Battery (DCIM_Battery)
- ☒ DCIM BIOS Enumeration (DCIM_BIOSEnumeration)
- ☒ DCIM BIOSElement (DCIM_BIOSElement)
- ☒ DCIM BIOSPassword (DCIM_BIOSPassword)
- ☒ DCIM BIOSService (DCIM_BIOSService)
- ☒ DCIM BIOSString (DCIM_BIOSString)
- ☒ DCIM Boot Config Setting (DCIM_BootConfigSetting)
- ☒ DCIM Boot Service (DCIM_BootService)
- ☒ DCIM Boot Source Setting (DCIM_BootSourceSetting)
- ☒ DCIM Button (DCIM_Button)
- ☒ DCIM Card (DCIM_Card)
- ☒ DCIM Chassis and Docking (DCIM_Chassis)
- ☒ DCIM Chip (DCIM_Chip)
- ☒ DCIM Computer System (DCIM_ComputerSystem)
- ☒ DCIM Concrete Job (DCIM_ConcreteJob)
- ☒ DCIM Controller View (DCIM_ControllerView)
- ☒ DCIM Desktop Monitor (DCIM_DesktopMonitor)

Import...

Export...

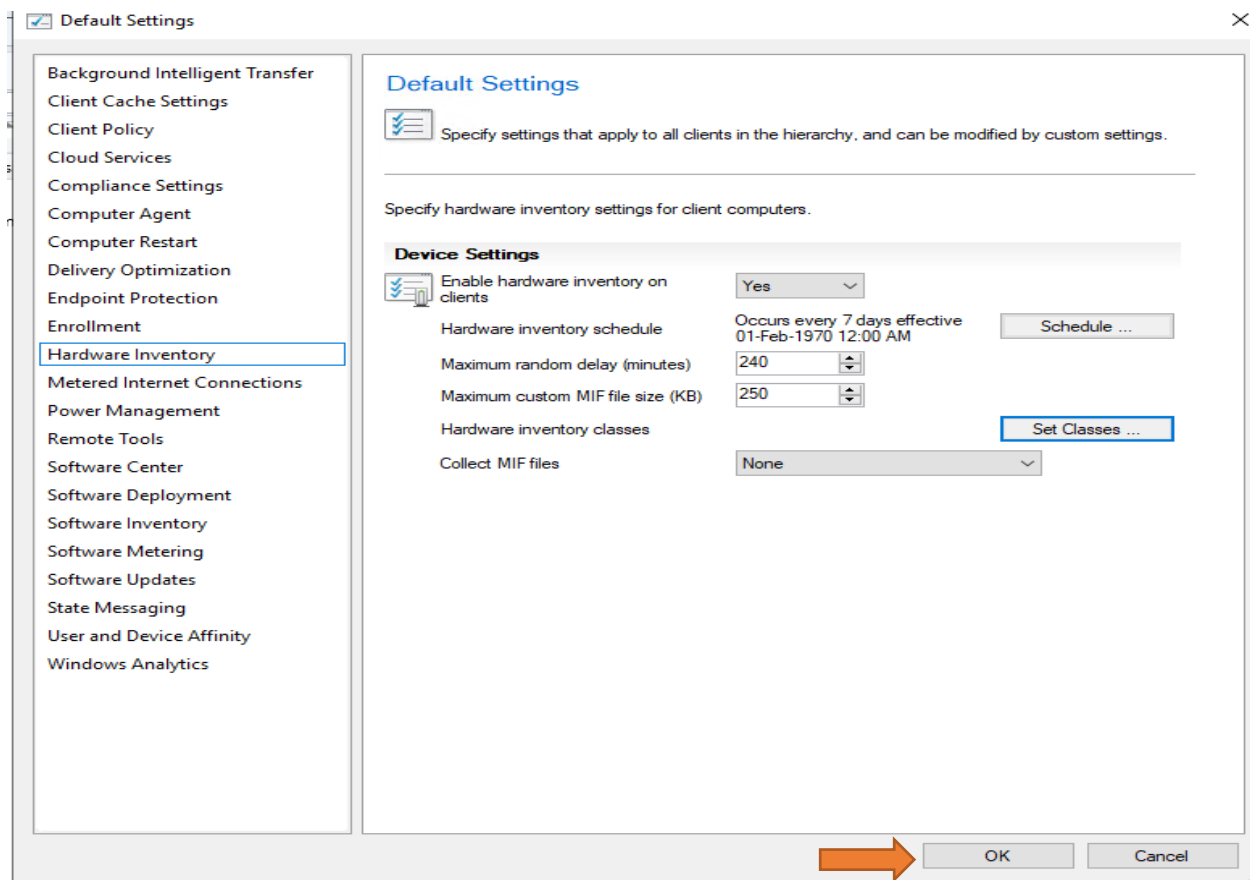
Add...

Delete

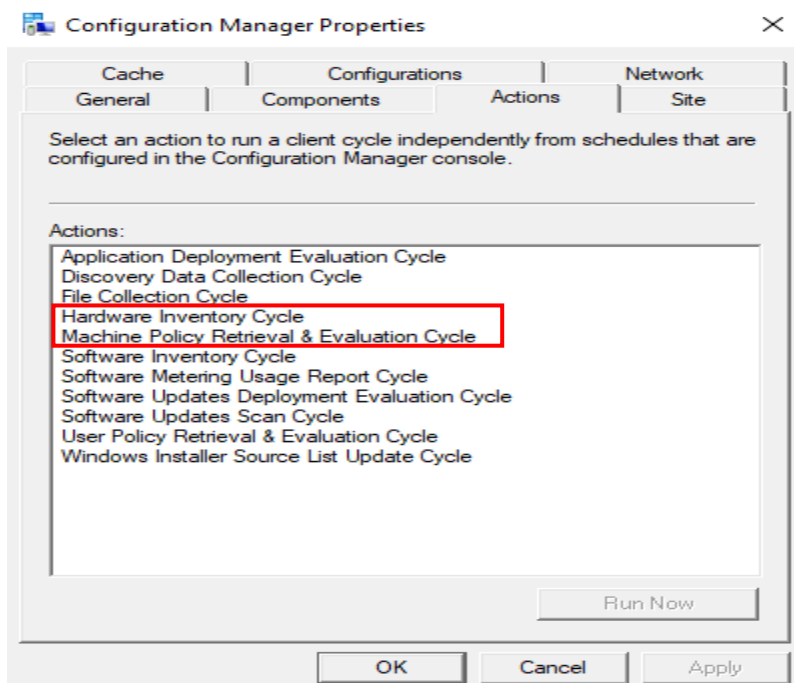


OK

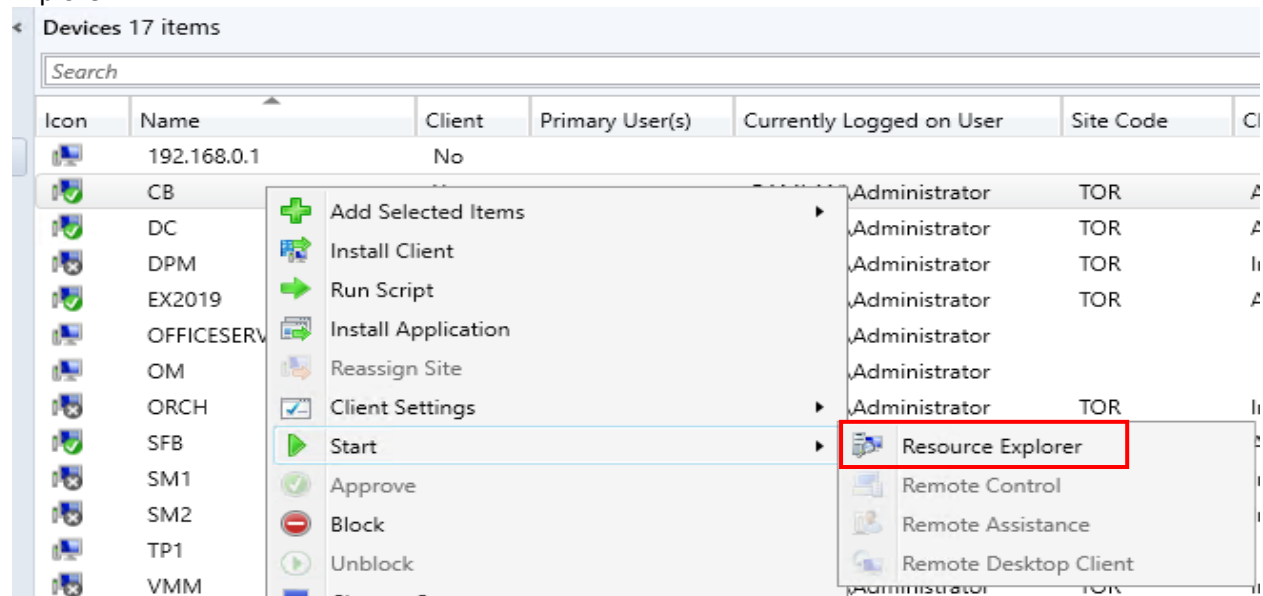
Cancel



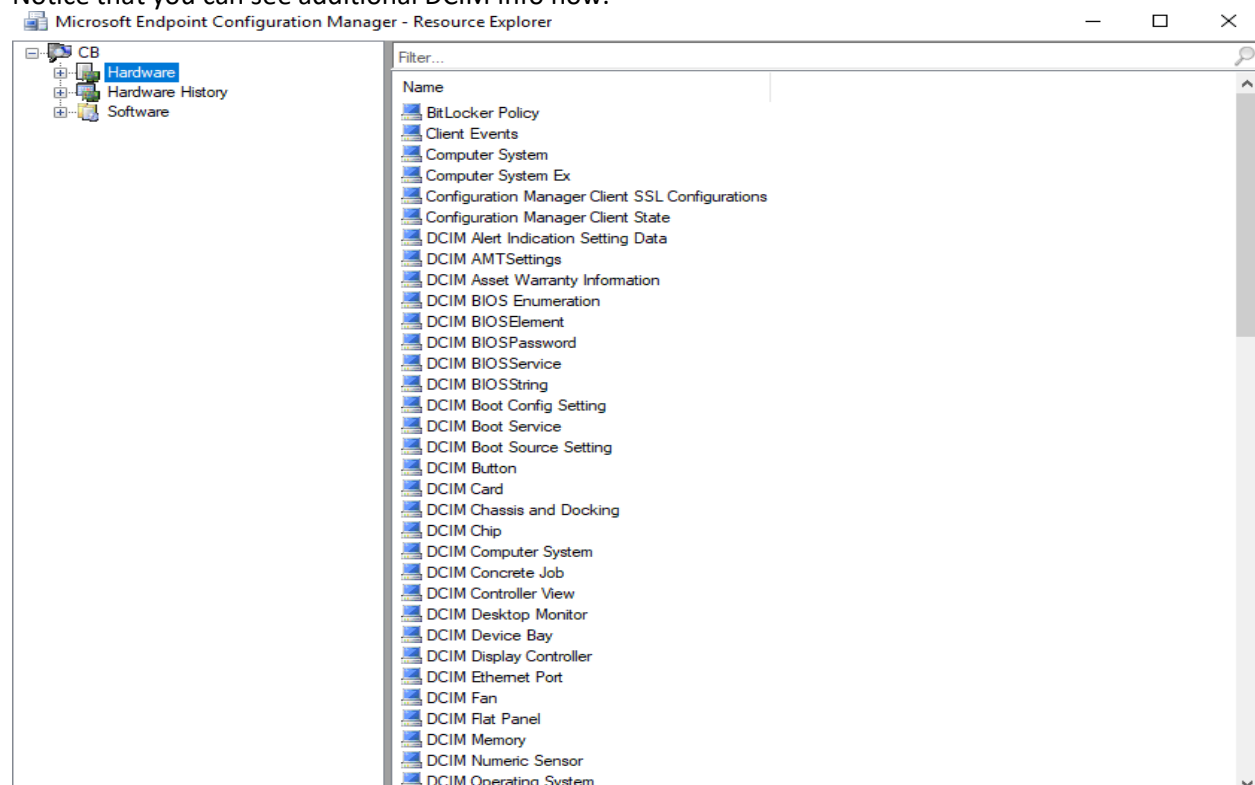
Login to Dell machine - Open Control Panel > System and Security > Configuration Manager. Go to Actions tab, run Machine Policy Retrieval & Evaluation Cycle and Hardware Inventory Cycle in order.



After few minutes, under Assets and Compliance, right click a Dell machine and click Start > Resource Explorer.



Notice that you can see additional DCIM info now.



This concludes Dell Integration suite configuration. Using Dell Command Monitor, SCCM administrators can remotely manage assets, monitor system health, and inventory deployed systems in an enterprise.

Thanks

Ram Lan
18th Jan 2020