

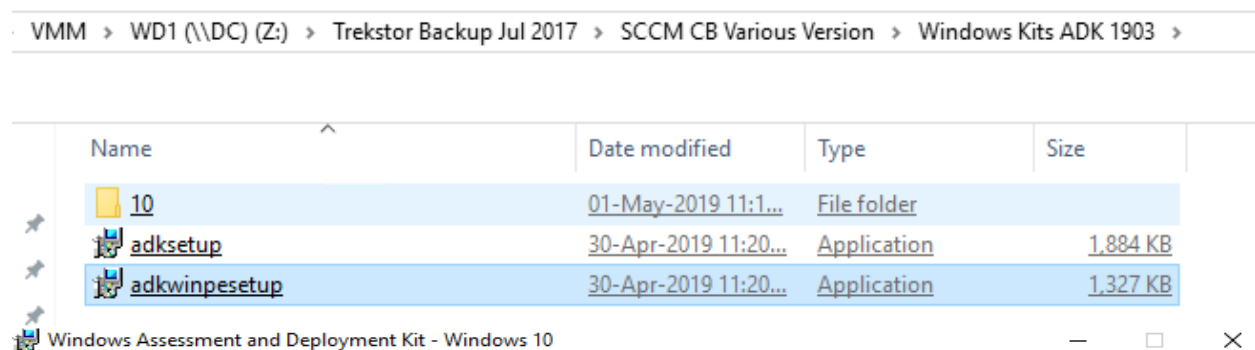
Installing Virtual Machine Manager 2019 (VMM)

In this post, I will show you the steps for installing Virtual Machine Manager 2019. I will be installing it on a virtual machine running Server 2019 and SQL Server 2017.

First we will take care of these pre req.

1. ADK 1903
2. SQL Server 2017 + Latest CU
3. ODBC Driver 11 for SQL Server
4. SQL Server Command Line Utilities 11
5. Service Account (Group Managed Service) – Create this on the Domain Controller using PS
6. Install all updates for Server 2019
7. Restart the server

ADK 1903:



Specify Location

- ☒ Install the Windows Assessment and Deployment Kit - Windows 10 to this computer

Install Path:

C:\Program Files (x86)\Windows Kits\10\

Browse...

- ☐ Download the Windows Assessment and Deployment Kit - Windows 10 for installation on a separate computer

Download Path:

C:\Users\ADMINISTRATOR.RAMLAN\Downloads\Windows Kits\10\ADK

Browse...

Estimated disk space required:

1.1 GB

Disk space available:

232.5 GB

Next

Cancel

Windows Kits Privacy

Windows 10 Kits collect and send anonymous usage data to Microsoft about how our customers use Microsoft programs and about some of the problems they encounter. Microsoft uses this information to improve the products and features. Participation in the program is voluntary, and the end results are software improvements to better meet the needs of our customers. No code or software produced by you will be collected.

[Tell me more about the Windows 10 program.](#)

Send anonymous usage data to Microsoft for the Windows 10 Kits?

- ☒ Yes
☐ No

* Participation applies to all Windows Kits installed on this computer.

[Privacy Statement](#)

Back

Next

Cancel

License Agreement

You must accept the terms of this agreement to continue. If you do not accept the Microsoft Software License Terms, click Decline.

MICROSOFT SOFTWARE LICENSE TERMS

MICROSOFT WINDOWS ASSESSMENT AND DEPLOYMENT KIT (ADK) FOR WINDOWS 10

MICROSOFT WINDOWS HARDWARE LAB KIT (HLK) FOR WINDOWS 10

MICROSOFT WINDOWS DRIVER KIT (WDK) FOR WINDOWS 10

These license terms are an agreement between you and Microsoft Corporation (or one of its affiliates). They apply to the software named above and any Microsoft services or software updates (except to the extent such services or updates are accompanied by new or additional terms, in which case those different terms apply prospectively and do not alter your or Microsoft's rights relating to pre-updated software or services). IF YOU COMPLY WITH THESE LICENSE TERMS, YOU HAVE THE RIGHTS BELOW. BY USING THE SOFTWARE, YOU ACCEPT THESE TERMS.

1. INSTALLATION AND USE RIGHTS.

a. ADK.

- i. You may install and use any number of copies of the software on your devices solely for the purpose of deploying, maintaining, assessing system quality and evaluating

Back

Accept

Decline

Select the features you want to install

Click a feature name for more information.

- ☐ Application Compatibility Tools
- ☒ Deployment Tools
- ☐ Imaging And Configuration Designer (ICD)
- ☐ Configuration Designer
- ☐ User State Migration Tool (USMT)
- ☐ Volume Activation Management Tool (VAMT)
- ☐ Windows Performance Toolkit
- ☐ Microsoft User Experience Virtualization (UE-V) Template Ger
- ☐ Microsoft Application Virtualization (App-V) Sequencer
- ☒ Microsoft Application Virtualization (App-V) Auto Sequencer
- ☐ Media eXperience Analyzer

Microsoft Application Virtualization (App-V) Auto Sequencer

Size: 913 KB

Microsoft Application Virtualization (App-V) Auto Sequencer.

The Application Virtualization (App-V) Auto Sequencer is a helper tool for batch sequencing packages.

Estimated disk space required:
Disk space available:

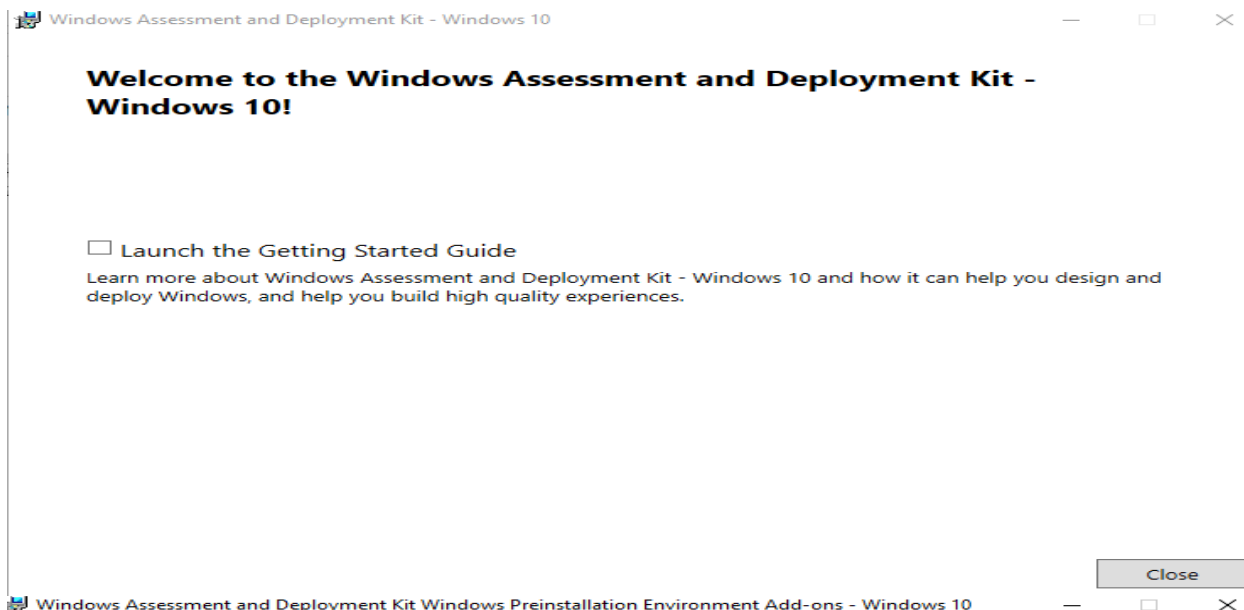
96.3 MB
232.5 GB

< >

Back

Install

Cancel



Specify Location

- ☒ Install the Windows Assessment and Deployment Kit Windows Preinstallation Environment Add-ons - Windows 10 to this computer

Install Path:

C:\Program Files (x86)\Windows Kits\10\

Browse...

* Windows Kit common installation path used

- ☐ Download the Windows Assessment and Deployment Kit Windows Preinstallation Environment Add-ons - Windows 10 for installation on a separate computer

Download Path:

C:\Users\ADMINISTRATOR.RAMLAN\Downloads\Windows Kits\10\ADKWinPEAddons

Browse...

Estimated disk space required:
Disk space available:

5.7 GB
232.4 GB

Next

Cancel



Windows Kits Privacy

Windows 10 Kits collect and send anonymous usage data to Microsoft about how our customers use Microsoft programs and about some of the problems they encounter. Microsoft uses this information to improve the products and features. Participation in the program is voluntary, and the end results are software improvements to better meet the needs of our customers. No code or software produced by you will be collected.

[Tell me more about the Windows 10 program.](#)

Send anonymous usage data to Microsoft for the Windows 10 Kits?

- ☒ Yes
☐ No

* You are currently participating in the CEIP program. Participation applies to all Windows kits installed on this computer.

[Privacy Statement](#)

Back

Next

Cancel

Select the features you want to install

Click a feature name for more information.

☒ Windows Preinstallation Environment (Windows PE)

Windows Preinstallation Environment (Windows PE)

Size: 5.7 GB

Minimal operating system designed to prepare a computer for installation and servicing of Windows.

Includes:

- Windows PE (x86)
- Windows PE (AMD64)
- Windows PE (ARM)
- Windows PE (ARM64)

Estimated disk space required: 5.7 GB
Disk space available: 232.4 GB

Back

Install

Cancel

License Agreement

You must accept the terms of this agreement to continue. If you do not accept the Microsoft Software License Terms, click Decline.

MICROSOFT SOFTWARE LICENSE TERMS

MICROSOFT WINDOWS ASSESSMENT AND DEPLOYMENT KIT (ADK) FOR WINDOWS 10

MICROSOFT WINDOWS HARDWARE LAB KIT (HLK) FOR WINDOWS 10

MICROSOFT WINDOWS DRIVER KIT (WDK) FOR WINDOWS 10

*
These license terms are an agreement between you and Microsoft Corporation (or one of its affiliates). They apply to the software named above and any Microsoft services or software updates (except to the extent such services or updates are accompanied by new or additional terms, in which case those different terms apply prospectively and do not alter your or Microsoft's rights relating to pre-updated software or services). IF YOU COMPLY WITH THESE LICENSE TERMS, YOU HAVE THE RIGHTS BELOW. BY USING THE SOFTWARE, YOU ACCEPT THESE TERMS.

1. INSTALLATION AND USE RIGHTS.

a. ADK.

- You may install and use any number of copies of the software on your devices solely for the purpose of deploying, maintaining, assessing system quality and evaluating

Back

Accept











Decline

Welcome to the Windows Assessment and Deployment Kit Windows Preinstallation Environment Add-ons - Windows 10!

Close

SQL 2017:

VMM > DVD Drive (D:) SqlSetup_x64_ENU

Name	Date modified	Type	Size
 1033_ENU_LP	23-Aug-2017 1:55 ...	File folder	
 redist	23-Aug-2017 1:55 ...	File folder	
 resources	23-Aug-2017 1:55 ...	File folder	
 Tools	23-Aug-2017 1:55 ...	File folder	
 x64	23-Aug-2017 5:52 ...	File folder	
 autorun	04-Aug-2017 10:0...	Setup Information	1 KB
 MedialInfo	23-Aug-2017 1:57 ...	XML Document	1 KB
 setup	22-Aug-2017 8:38 ...	Application	107 KB
 setup.exe.config	18-Aug-2017 4:41 ...	CONFIG File	1 KB
 SqlSetupBootstrapper.dll	22-Aug-2017 8:20 ...	Application extens...	235 KB

SQL Server Installation Center

Planning

Installation

Maintenance

Tools

Resources

Advanced

Options



[New SQL Server stand-alone installation or add features to an existing installation](#)

Launch a wizard to install SQL Server 2017 in a non-clustered environment or to add features to an existing SQL Server 2017 instance.



[Install SQL Server Reporting Services](#)

Launch a download page that provides a link to install SQL Server Reporting Services. An internet connection is required to install SSRS.



[Install SQL Server Management Tools](#)

Launch a download page that provides a link to install SQL Server Management Studio, SQL Server command-line utilities (SQLCMD and BCP), SQL Server PowerShell provider, SQL Server Profiler and Database Tuning Advisor. An internet connection is required to install these tools.



[Install SQL Server Data Tools](#)

Launch a download page that provides a link to install SQL Server Data Tools (SSDT). SSDT provides Visual Studio integration including project system support for Azure SQL Database, the SQL Server Database Engine, Reporting Services, Analysis Services and Integration Services. An internet connection is required to install SSDT.



[New SQL Server failover cluster installation](#)

Launch a wizard to install a single-node SQL Server 2017 failover cluster.



[Add node to a SQL Server failover cluster](#)

Launch a wizard to add a node to an existing SQL Server 2017 failover cluster.



[Upgrade from a previous version of SQL Server](#)

Launch a wizard to upgrade a previous version of SQL Server to SQL Server 2017.



[New Machine Learning Server \(Standalone\) installation](#)

Launch a wizard to install Machine Learning Server (Standalone) on a Windows

Microsoft SQL Server 2017

Product Key

Specify the edition of SQL Server 2017 to install.

Product Key

License Terms

Global Rules

Microsoft Update

Product Updates

Install Setup Files

Install Rules

Feature Selection

Feature Rules

Feature Configuration Rules

Ready to Install

Installation Progress

Complete

Validate this instance of SQL Server 2017 by entering the 25-character key from the Microsoft certificate of authenticity or product packaging. You can also specify a free edition of SQL Server: Developer, Evaluation, or Express. Evaluation has the largest set of SQL Server features, as documented in SQL Server Books Online, and is activated with a 180-day expiration. Developer edition does not have an expiration, has the same set of features found in Evaluation, but is licensed for non-production database application development only. To upgrade from one installed edition to another, run the Edition Upgrade Wizard.

☐ Specify a free edition:

Evaluation

☒ Enter the product key:

< Back

Next >

Cancel

License Terms

To install SQL Server 2017, you must accept the Microsoft Software License Terms.

Product Key

License Terms

Global Rules

Microsoft Update

Product Updates

Install Setup Files

Install Rules

Feature Selection

Feature Rules

Feature Configuration Rules

Ready to Install

Installation Progress

Complete

MICROSOFT SOFTWARE LICENSE TERMS

MICROSOFT SQL SERVER 2017 ENTERPRISE

These license terms are an agreement between Microsoft Corporation (or based on where you live, one of its affiliates) and you. Please read them. They apply to the software named above, which includes the media on which you received it, if any. The terms also apply to any Microsoft

- updates,
- supplements,
- Internet-based services, and

Copy Print

☒ I accept the license terms.

SQL Server 2017 transmits information about your installation experience, as well as other usage and performance data, to Microsoft to help improve the product. To learn more about SQL Server 2017 data processing and privacy controls, please see the [Privacy Statement](#).

< Back

Next >

Cancel

Microsoft Update

Use Microsoft Update to check for important updates

Product Key
License Terms
Global Rules
Microsoft Update
Product Updates
Install Setup Files
Install Rules
Feature Selection
Feature Rules
Feature Configuration Rules
Ready to Install
Installation Progress
Complete

Microsoft Update offers security and other important updates for Windows and other Microsoft software, including SQL Server 2017. Updates are delivered using Automatic Updates, or you can visit the Microsoft Update website.

☒ Use Microsoft Update to check for updates (recommended)

[Microsoft Update FAQ](#)

[Microsoft Update Privacy Statement](#)

< Back

Next >

Cancel

Install Rules

Setup rules identify potential problems that might occur while running Setup. Failures must be corrected before Setup can continue.

Product Key
License Terms
Global Rules
Microsoft Update
Product Updates
Install Setup Files
Install Rules
Feature Selection
Feature Rules
Feature Configuration Rules
Ready to Install
Installation Progress
Complete

Operation completed. Passed: 3. Failed 0. Warning 1. Skipped 0.

Hide details <<

Re-run

[View detailed report](#)

	Rule	Status
✓	Fusion Active Template Library (ATL)	Passed
✓	Consistency validation for SQL Server registry keys	Passed
✓	Computer domain controller	Passed
⚠	Windows Firewall	Warning

< Back

Next >

Cancel

Feature Selection

Select the Enterprise features to install.

Product Key
License Terms
Global Rules
Microsoft Update
Product Updates
Install Setup Files
Install Rules
Feature Selection
Feature Rules
Instance Configuration
Server Configuration
Database Engine Configuration
Feature Configuration Rules
Ready to Install
Installation Progress
Complete

Looking for Reporting Services? [Download it from the web](#)

Features:

- Instance Features**
- ☒ Database Engine Services
 - ☐ SQL Server Replication
 - ☐ Machine Learning Services (In-Database)
 - ☐ R
 - ☐ Python
 - ☐ Full-Text and Semantic Extractions for Search
 - ☐ Data Quality Services
 - ☐ PolyBase Query Service for External Data
 - ☐ Analysis Services

Select All Unselect All

Instance root directory: C:\Program Files\Microsoft SQL Server\ ...

Shared feature directory: C:\Program Files\Microsoft SQL Server\ ...

Shared feature directory (x86): C:\Program Files (x86)\Microsoft SQL Server\ ...

Feature description:

The configuration and operation of each instance feature of a SQL Server instance is isolated from other SQL Server instances. SQL

Prerequisites for selected features:

Already installed:
... Windows PowerShell 3.0 or higher
... Microsoft .NET Framework 4.6

Disk Space Requirements

Drive C: 1001 MB required, 232039 MB available

< Back

Next >

Cancel

Instance Configuration

Specify the name and instance ID for the instance of SQL Server. Instance ID becomes part of the installation path.

Product Key
License Terms
Global Rules
Microsoft Update
Product Updates
Install Setup Files
Install Rules
Feature Selection
Feature Rules
Instance Configuration
Server Configuration
Database Engine Configuration
Feature Configuration Rules
Ready to Install
Installation Progress
Complete

☐ Default instance

☒ Named instance: VMM

Instance ID: VMM

SQL Server directory: C:\Program Files\Microsoft SQL Server\MSSQL14.VMM

Installed instances:

Instance Name	Instance ID	Features	Edition	Version

< Back

Next >

Cancel

Server Configuration

Specify the service accounts and collation configuration.

Product Key
License Terms
Global Rules
Microsoft Update
Product Updates
Install Setup Files
Install Rules
Feature Selection
Feature Rules
Instance Configuration
Server Configuration
Database Engine Configuration
Feature Configuration Rules
Ready to Install
Installation Progress
Complete

Service Accounts Collation

Microsoft recommends that you use a separate account for each SQL Server service.

Service	Account Name	Password	Startup Type
SQL Server Agent	RAMLAN\Administrator	●●●●●●●●	Automatic ▾
SQL Server Database Engine	RAMLAN\Administrator	●●●●●●●●	Automatic ▾
SQL Server Browser	NT AUTHORITY\LOCAL ...		Automatic ▾

☐ Grant Perform Volume Maintenance Task privilege to SQL Server Database Engine Service

This privilege enables instant file initialization by avoiding zeroing of data pages. This may lead to information disclosure by allowing deleted content to be accessed.

[Click here for details](#)

< Back

Next >

Cancel

Server Configuration

Specify the service accounts and collation configuration.

Product Key
License Terms
Global Rules
Microsoft Update
Product Updates
Install Setup Files
Install Rules
Feature Selection
Feature Rules
Instance Configuration
Server Configuration
Database Engine Configuration
Feature Configuration Rules
Ready to Install
Installation Progress
Complete

Service Accounts Collation

Database Engine:

SQL_Latin1_General_CP1_CI_AS

Customize...

Latin1-General, case-insensitive, accent-sensitive, kanatype-insensitive, width-insensitive for Unicode Data, SQL Server Sort Order 52 on Code Page 1252 for non-Unicode Data

< Back

Next >

Cancel

Database Engine Configuration

Specify Database Engine authentication security mode, administrators, data directories and TempDB settings.

Product Key
License Terms
Global Rules
Microsoft Update
Product Updates
Install Setup Files
Install Rules
Feature Selection
Feature Rules
Instance Configuration
Server Configuration
Database Engine Configuration
Feature Configuration Rules
Ready to Install
Installation Progress
Complete

Server Configuration | Data Directories | TempDB | FILESTREAM

Specify the authentication mode and administrators for the Database Engine.

Authentication Mode

☒ Windows authentication mode

☐ Mixed Mode (SQL Server authentication and Windows authentication)

Specify the password for the SQL Server system administrator (sa) account.

Enter password:

Confirm password:

Specify SQL Server administrators

RAMLAN\Administrator (Administrator)
RAMLAN\ramlan (Ram Lan)
RAMLAN\ram (Ram)
VMM\Administrator (Administrator)

SQL Server administrators have unrestricted access to the Database Engine.

Add Current User

Add...

Remove

< Back

Next >

Cancel

Ready to Install

Verify the SQL Server 2017 features to be installed.

Product Key
License Terms
Global Rules
Microsoft Update
Product Updates
Install Setup Files
Install Rules
Feature Selection
Feature Rules
Instance Configuration
Server Configuration
Database Engine Configuration
Feature Configuration Rules
Ready to Install
Installation Progress
Complete

Ready to install SQL Server 2017:

Summary

... Edition: Enterprise
... Action: Install (Product Update)
... Prerequisites
... Already installed:
... Windows PowerShell 3.0 or higher
... Microsoft .NET Framework 4.6
... To be installed from media:
... Microsoft Visual C++ 2015 Redistributable
... General Configuration
... Features
... Database Engine Services
... Instance configuration
... Instance Name: VMM
... Instance ID: VMM
... Instance IDs
... SQL Database Engine: MSSQL14.VMM
... Instance Directories: C:\Program Files\Microsoft SQL Server\140\

Configuration file path:

C:\Program Files\Microsoft SQL Server\140\Setup Bootstrap\Log\20191226_110917\ConfigurationFile.ini

< Back

Install

Cancel

Complete

Your SQL Server 2017 installation completed successfully with product updates.

Product Key
License Terms
Global Rules
Microsoft Update
Product Updates
Install Setup Files
Install Rules
Feature Selection
Feature Rules
Instance Configuration
Server Configuration
Database Engine Configuration
Feature Configuration Rules
Ready to Install
Installation Progress
Complete

Information about the Setup operation or possible next steps:

Feature	Status
✓ Database Engine Services	Succeeded
✓ SQL Browser	Succeeded
✓ SQL Writer	Succeeded
✓ SQL Client Connectivity	Succeeded
✓ SQL Client Connectivity SDK	Succeeded
✓ Setup Support Files	Succeeded

Details:

Install successful.

Summary log file has been saved to the following location:

C:\Program Files\Microsoft SQL Server\140\Setup Bootstrap\Log\20191226_110917\S\Ssummary_VMM_20191226_110917.txt

Close

SQL 2017 KB4527377:

02 SQLServer2017-KB4527377-x64 25-Dec-2019 2:05 ... Application 541,841 KB

Install a SQL Server 2017 update

— □ ×

License Terms

To install the update, you must accept the Microsoft Software License Terms.

SQL Server 2017 update
License Terms
Select Features
Check Files In Use
Ready to update
Update Progress
Complete

UPDATE FOR MICROSOFT SQL SERVER 2017

PLEASE NOTE: Refer to your license terms for Microsoft SQL Server 2017 software (the "software") to identify the entity licensing this supplement to you and for support information. You may use a copy of this supplement with each validly licensed copy of the software. You may not use the supplement if you do not have a license for the software. The license terms for the software apply to your use of this supplement.

Copy Print

☒ I accept the license terms and [Privacy Statement](#)

SQL Server transmits information about your installation experience, as well as other usage and performance data, to Microsoft to help improve the product. To learn more about data processing and privacy controls, and to turn off the collection of this information after installation, see the [documentation](#).

< Back

Next >

Cancel

Select Features

Specify the features to update.

SQL Server 2017 update

License Terms

Select Features

Check Files In Use

Ready to update

Update Progress

Complete

Instances:

- ☒ VMM
 - ... Database Engine Services
 - ☒ Shared Features
 - ... SQL Client Connectivity SDK

Description:

Language:

Edition:

Patch Level:

Architecture:

Service Pack:

Upgrade Status:

Select All

Unselect All

< Back

Next >

Cancel

Check Files In Use

The following services and applications are using files that Setup needs to complete the installation. To avoid a computer restart, stop the applications and services.

SQL Server 2017 update

License Terms

Select Features

Check Files In Use

Ready to update

Update Progress

Complete

Files in use check completed.

Stop check

Refresh check

< Back

Next >

Cancel

Ready to update

Verify the list of features to be updated.

SQL Server 2017 update

License Terms

Select Features

Check Files In Use

Ready to update

Update Progress

Complete

Ready to update:

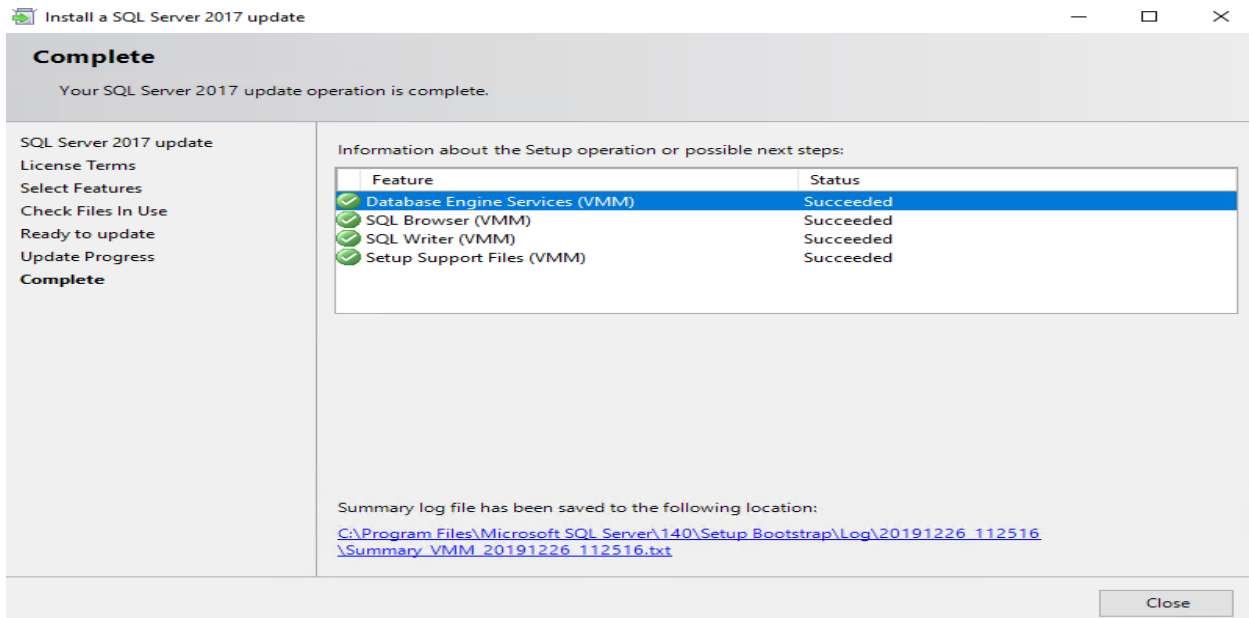
- [-] Summary
 - ... Action: Patch
 - [-] General Configuration
 - [-] VMM
 - [-] Features
 - ... Database Engine Services
 - [-] Attributes
 - ... Language: English - United States
 - ... Edition: Enterprise
 - ... Patch Level: 14.0.1000.169
 - ... Processor Type: x64
 - ... Service Pack:
 - ... Upgrade Status: Not installed.
 - [-] Shared Features
 - [-] Features
 - ... SQL Client Connectivity SDK
 - [-] Attributes
 - ... Language:

Configuration file path:

< Back

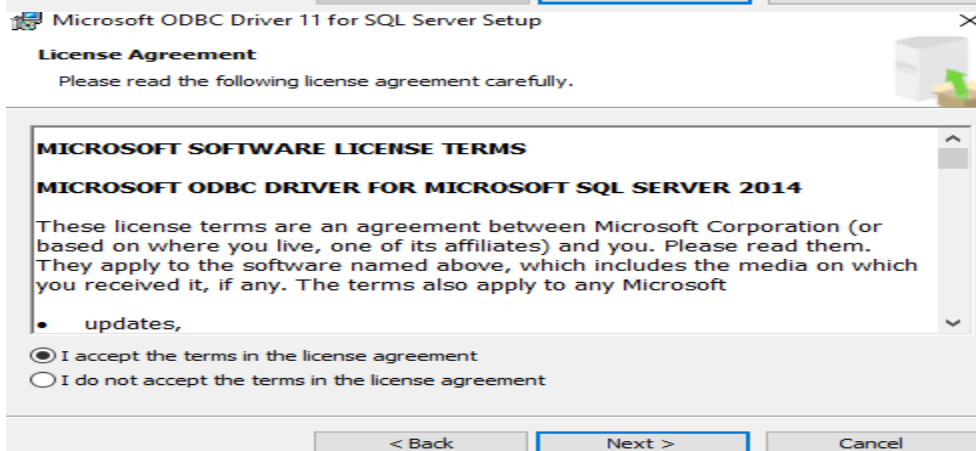
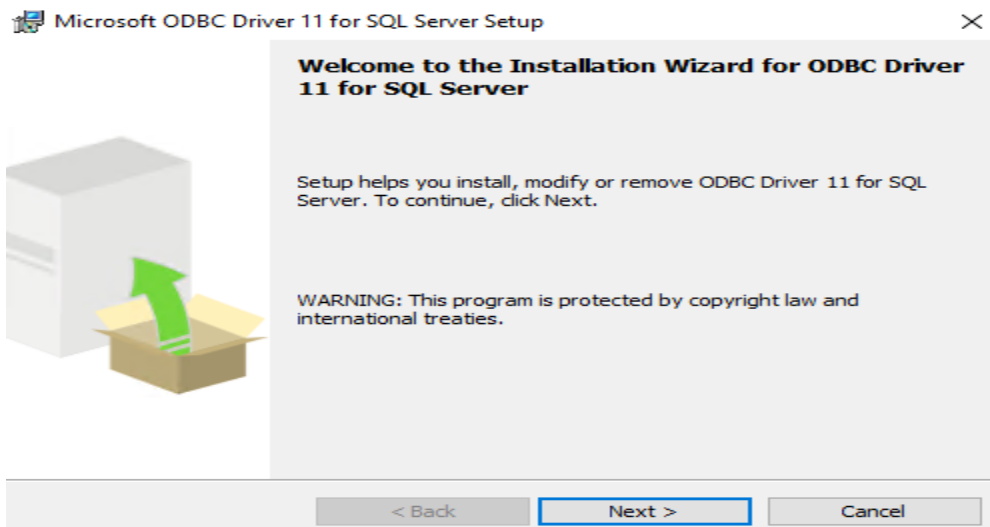
Update

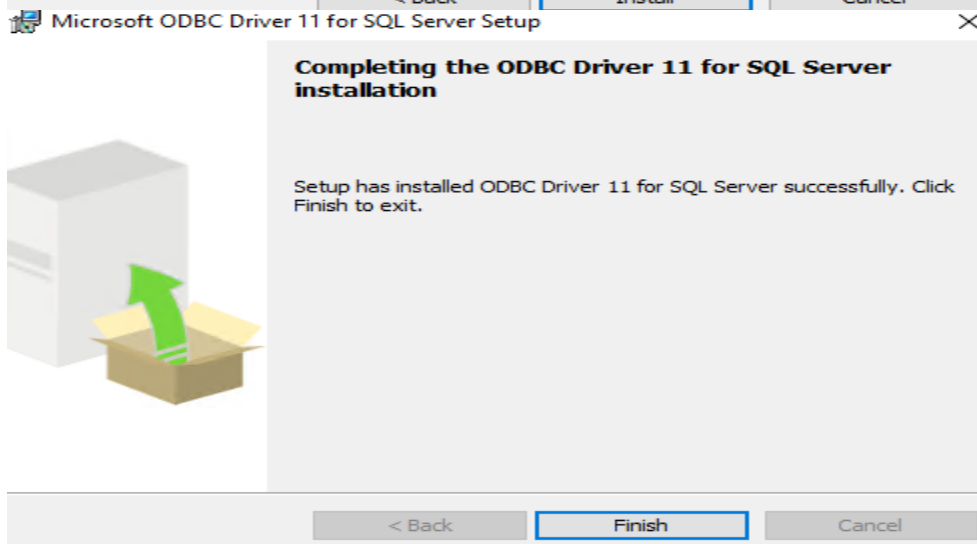
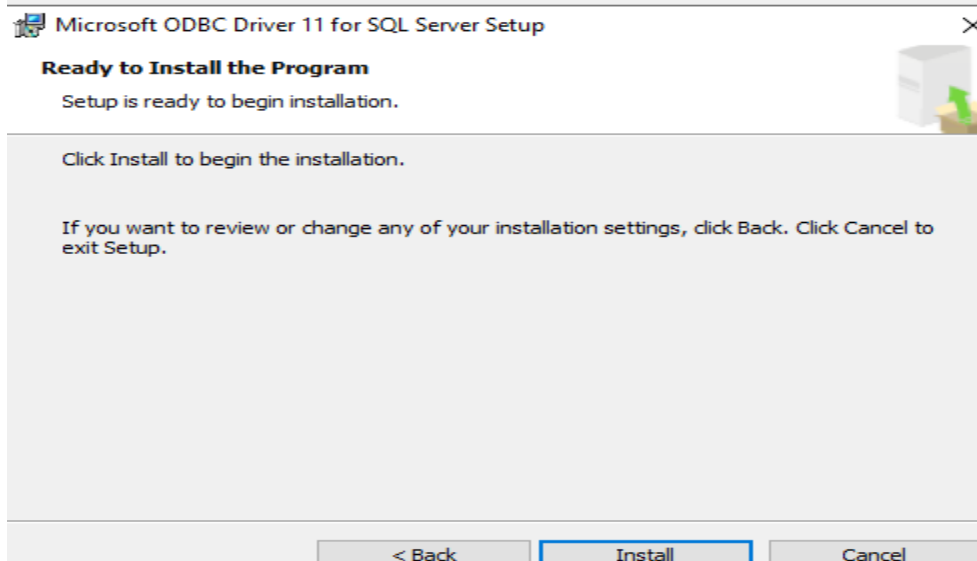
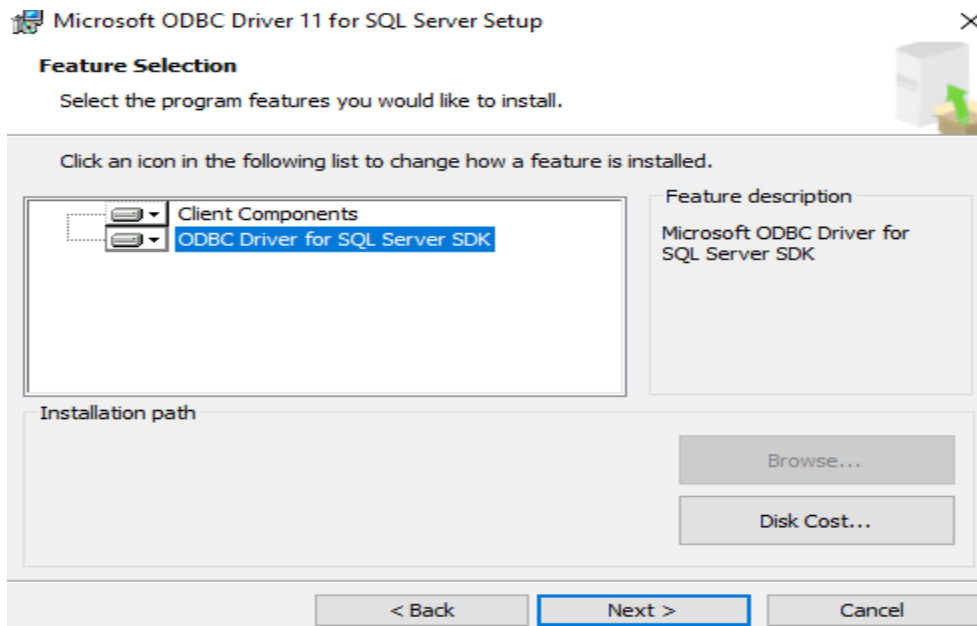
Cancel

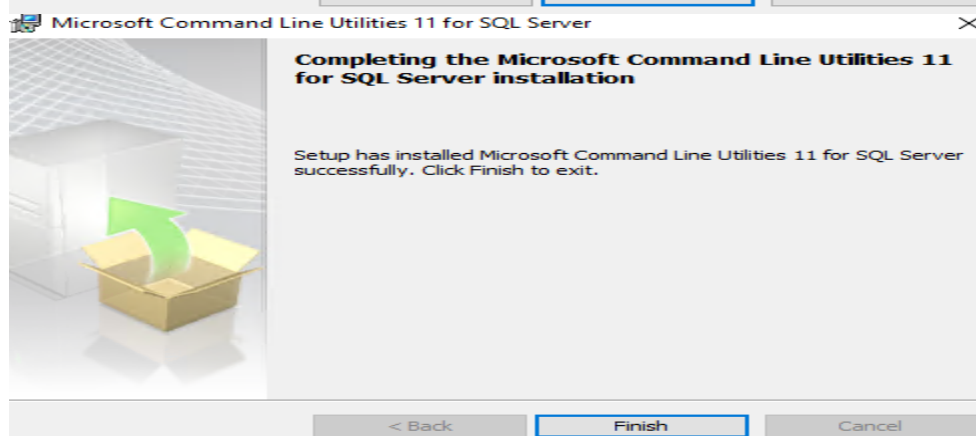
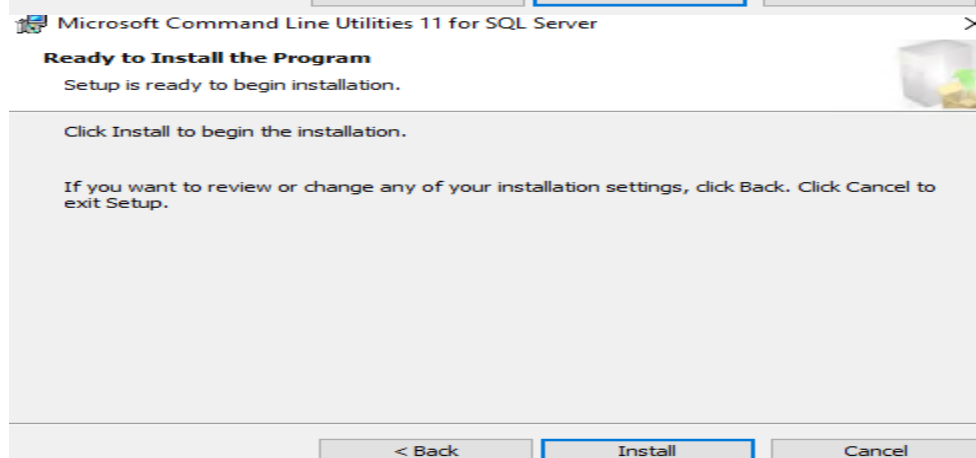
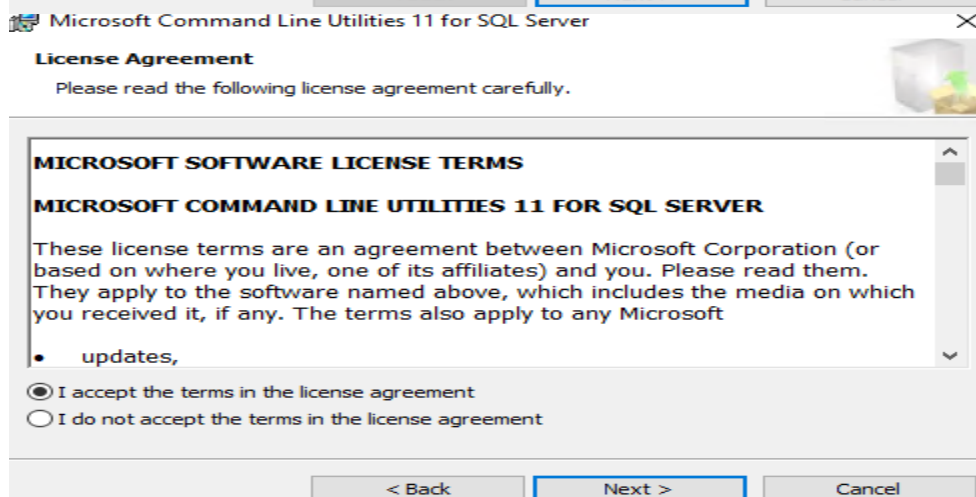
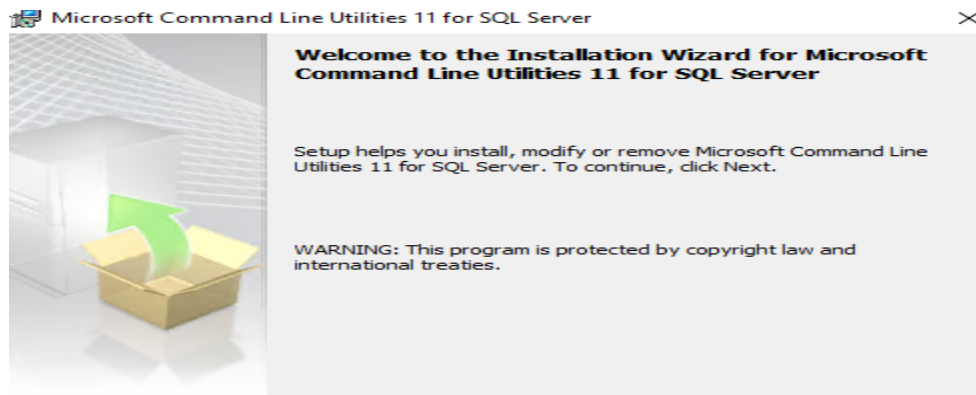


ODBC Driver & Command Line Utility:

Name	Date modified	Type	Size
msodbcsql	26-Dec-2019 9:00 ...	Windows Installer ...	3,764 KB
MsSqlCmdLnUtils	26-Dec-2019 8:59 ...	Windows Installer ...	2,620 KB







Group Managed Service Account (GMSA):

- New-ADServiceAccount SCVMMMSVC –DNSHostName SCVMMMSVC.ramlan.ca – PrincipalsAllowedToRetrieveManagedPassword VMM\$ –KerberosEncryptionType RC4, AES128, AES256
- get-adserviceaccount -identity scvmmmsvc









Make sure to add this account to local admin group on VMM machine where you install VMM2019.

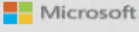
```
S C:\Users\Administrator> New-ADServiceAccount SCVMMMSVC -DNSHostName SCVMMMSVC.ramlan.ca -PrincipalsAllowedToRetrieveManagedPassword VMM$ -KerberosEncryptionType RC4, AES128, AES256
S C:\Users\Administrator> get-adserviceaccount -identity scvmmmsvc

DistinguishedName : CN=SCVMMMSVC,CN=Managed Service Accounts,DC=RAMLAN,DC=CA
Enabled           : True
Name             : SCVMMMSVC
ObjectClass      : msDS-GroupManagedServiceAccount
ObjectGUID       : ec9cdf19-f85d-4b59-99f3-6400fb43b2ee
SamAccountName   : SCVMMMSVC$
ID               : S-1-5-21-2663475566-2463441597-3031320717-1219
ServerPrincipalName :
```


Install VMM 2019:

VMM > OS (C:) > Temp > System Center Virtual Machine Manager >

Name	Date modified	Type	Size
 amd64	26-Dec-2019 11:54...	File folder	
 i386	26-Dec-2019 11:55...	File folder	
 Prerequisites	26-Dec-2019 11:55...	File folder	
 SAV	26-Dec-2019 11:55...	File folder	
 Scripts	26-Dec-2019 11:55...	File folder	
 autorun	04-Feb-2019 8:47 ...	Setup Information	1 KB
 msvcrt110.dll	16-Jul-2014 12:50 ...	Application extens...	855 KB
 setup	08-Feb-2019 1:47 ...	Application	371 KB





System Center 2019 Virtual Machine Manager

**Install**

- Restart may be required
- Before you begin
 - VMM Privacy Statement

Optional Installations

-  **Local Agent**
Installs agent on local machine.



- Release Notes
- Installation Guide
- Browse the CD
- System Center Online

© Microsoft Corporation. All rights reserved.

Close

Getting started

[Report a problem](#)

Select features to install

☒ **VMM management server**

Installs the Virtual Machine Manager service, which processes commands and controls communications with the VMM database, library servers, and virtual machine hosts. This feature requires a SQL Server database and Windows Assessment and Deployment Kit (ADK) for Windows 10. ([View all installation requirements](#))

☒ **VMM console**

Installs a program that allows you to connect to a VMM management server to centrally view and manage resources, such as hosts, virtual machines, private clouds, and services. ([View all installation requirements](#))

Previous

Next

Cancel

Getting started

[Report a problem](#)

Product registration information

Name: Administrator

Organization: RAMLAN INC

Product key: BXH69-M62YX-QQD6R-3GPWX-8WMFY

Previous

Next

Cancel

Getting started

[Report a problem](#)

Please read this license agreement

PLEASE NOTE: Your use of this software is subject to the terms and conditions of the license agreement by which you (or your company) acquired the Microsoft server software or gained access to the online service from Microsoft. For instance, if you are:

- a volume license customer or service provider, use of this software is subject to your volume license agreement or service provider license agreement;
- a customer that received the software separately from a hardware manufacturer or system builder, use of this software is subject to the license agreement with that party;
- an online service customer, use of this software is subject to the online subscription agreement.

☒ I have read, understood, and agree with the terms of the license agreement

Print

[VMM Privacy Statement](#)

Previous

Next

Cancel

Getting started

[Report a problem](#)

Diagnostic and Usage Data

Microsoft automatically collects usage and performance data over the internet ("Data"). Microsoft uses this Data to provide and improve the quality, security and integrity of Microsoft products and services. For example, we analyze performance and reliability, such as what features you use, how quickly the features respond, device performance, user interface interactions, and any problems you experience with the product. Data will also include information about the configuration of your software like the software version you are currently running, and the IP address.

Choice/Control: This feature is on by default. Administrators can turn off this feature anytime by changing the Settings workspace of the VMM console.

For information about the other data collection and usage, see [Privacy Statement for System Center Virtual Machine Manager](#). This Notice replaces the Customer Experience Improvement Program (CEIP) description in the VMM section of the Privacy Statement. All other sections of the Privacy Statement apply.

Previous

Next

Cancel

Getting started

[Report a problem](#)

Installation location

The recommended location for program files is displayed.

Location:

Browse...

Free space 223.41 GB

Previous

Next

Cancel

Configuration

[Report a problem](#)

Database configuration

Provide information about the database that you would like to use for your VMM management server.

Server name:

Browse

Port: ☐ Use the following credentialsUser name:

Format: Domain\UserName

Password: Instance name:

Select an existing database or create a new database.

☒ New database: ☐ Existing database:

Previous

Next

Cancel

Configuration

[Report a problem](#)

Configure service account and distributed key management

Virtual Machine Manager Service Account

Select the account to be used by the VMM service. Highly available VMM installations require the use of a domain account.

[Which type of account should I use?](#)

☐ Local System account

☐ Domain account

User name and domain:

Password:

Select...

☒ Group Managed Service Account

User name and domain:

ramlan.ca\SCVMMMSVC\$

Distributed Key Management

Select whether to store encryption keys in Active Directory instead of on the local machine. Highly available VMM installations require the keys be stored in Active Directory.

☒ Store my keys in Active Directory

Provide the location in Active Directory. For example, CN=DKM,DC=contoso,DC=com.

OU=VMM,DC=RAMLAN,DC=CA

[How do I configure distributed key management?](#)

Previous

Next

Cancel

Configuration

[Report a problem](#)

Port configuration

Management Server

Please select the ports for various VMM features.

8100

Communication with the VMM console

5985

Communication to agents on hosts and library servers

443

File transfers to agents on hosts and library servers

8102

Communication with Windows Deployment Services

8101

Communication with Windows Preinstallation Environment (Windows PE) agents

8103

Communication with Windows PE agent for time synchronization

Previous

Next

Cancel

Configuration

[Report a problem](#)

Library configuration

Specify a share for the Virtual Machine Manager library

☒ Create a new library share

Share name: MSSCVMMLibrary

Share location: C:\ProgramData\Virtual Machine Manager Library Files

Select...

Share description: VMM Library Share

☐ Use an existing library share

Share name: MSSCVMMLibrary

Share location:

Share description:

Previous

Next

Cancel

Configuration

[Report a pr](#)

Installation summary

Review the selections for features you are installing. To continue, click Install. To change these selections, click Previous.

Features selected to be added

VMM management server

VMM console

Installation Location

C:\Program Files\Microsoft System Center\Virtual Machine Manager

Database Information

VirtualManagerDB database will be created on VMM\VMM

Service Account

ramlan.ca\SCVMM\$VC\$

Communication Ports

8100 - Communication with the VMM console

5985 - Communication to agents on hosts and library servers

443 - File transfers to agents on hosts and library servers

8102 - Communication with Windows Deployment Services

8101 - Communication with Windows Preinstallation Environment (Windows PE) agents

8103 - Communication with Windows PE agent for time synchronization

Library Share Name and Location

MSSCVMMLibrary

C:\ProgramData\Virtual Machine Manager Library Files

Previous

Install

Cancel

Complete

[Report a problem](#)

Setup completed successfully

For detailed information, review the Setup log files that are located in the %SYSTEMDRIVE%\ProgramData\VMMLogs folder. Note that the ProgramData folder is a hidden folder.

✓ VMM management server

✓ VMM console



[Release Notes](#)

[Installation Guide](#)

[Read Documentation](#)

[System Center Online](#)

☒ Check for the latest Virtual Machine Manager updates

☒ Open the VMM console when this wizard closes

Close



System Center 2019 Virtual Machine Manager

This product is licensed to:



© Microsoft Corporation.
All rights reserved.

Server Version: 10.19.1013.0
[Product information](#)

HomeFolder

Create Service

Create Virtual Machine

Create Cloud

Create Host Group

Create VM Network

Assign Cloud Cloud

Overview

VMs

Services

VM Networks

Select Tenant

Clear Filter

PowerShell

Jobs

PRO

VMs and Services

Tenants

Clouds

Azure Subscriptions

VM Networks

Storage

All Hosts

VMs and Services

Fabric

Library

Jobs

Settings

VMs (0)

Name	Status	Virtual Machine State	Host
------	--------	-----------------------	------

HomeFolder

Create

Add Resources

Overview

Fabric Resources

Compliance

Scan

Remediate

Compliance Properties

Update Agent

Reassociate

Connect via RDP

PowerShell

Jobs

PRO

Fabric

Servers

All Hosts

Infrastructure

Networking

Storage

VMs and Services

Fabric

Library

Jobs

Settings

Managed Computers (1)

Name	Agent Status
VMM.RAMLAN.CA	Responding

HomeFolder

Create Service Template

Create VM Template

Create

Add Library Server

Import Template

Import Physical Resource

Import Shielding Data

Export Physical Resource

Library Settings

PowerShell Jobs PRO

library

Templates (0)

Templates

Service Deployment Configurations

Service Templates

VM Templates

Profiles

Application Profiles

Azure Profiles

Capability Profiles

Guest OS Profiles

Hardware Profiles

Physical Computer Profiles

SQL Server Profiles

VM Shielding Data

Equivalent Objects

Cloud Libraries

Self Service User Content

Library Servers

VMM.RAMLAN.CA

MSSCVMMLibrary

Stored Virtual Machines and Services

Orphaned Resources

Update Catalog and Baselines

Update Baselines

Update Catalog

VMs and Services

Fabric

Library

Jobs

Settings

Name	Release	Type
------	---------	------

Home

Refresh

Load More

Recent

Last 24 Hours

Last 7 Days

Last 30 Days

All

Custom

Restart

Cancel

PowerShell Jobs PRO

Jobs

History – Recent Jobs (0)

Last refresh: 26-Dec-2019 12:37:05 PM

Name

Running

History

Critical Failures

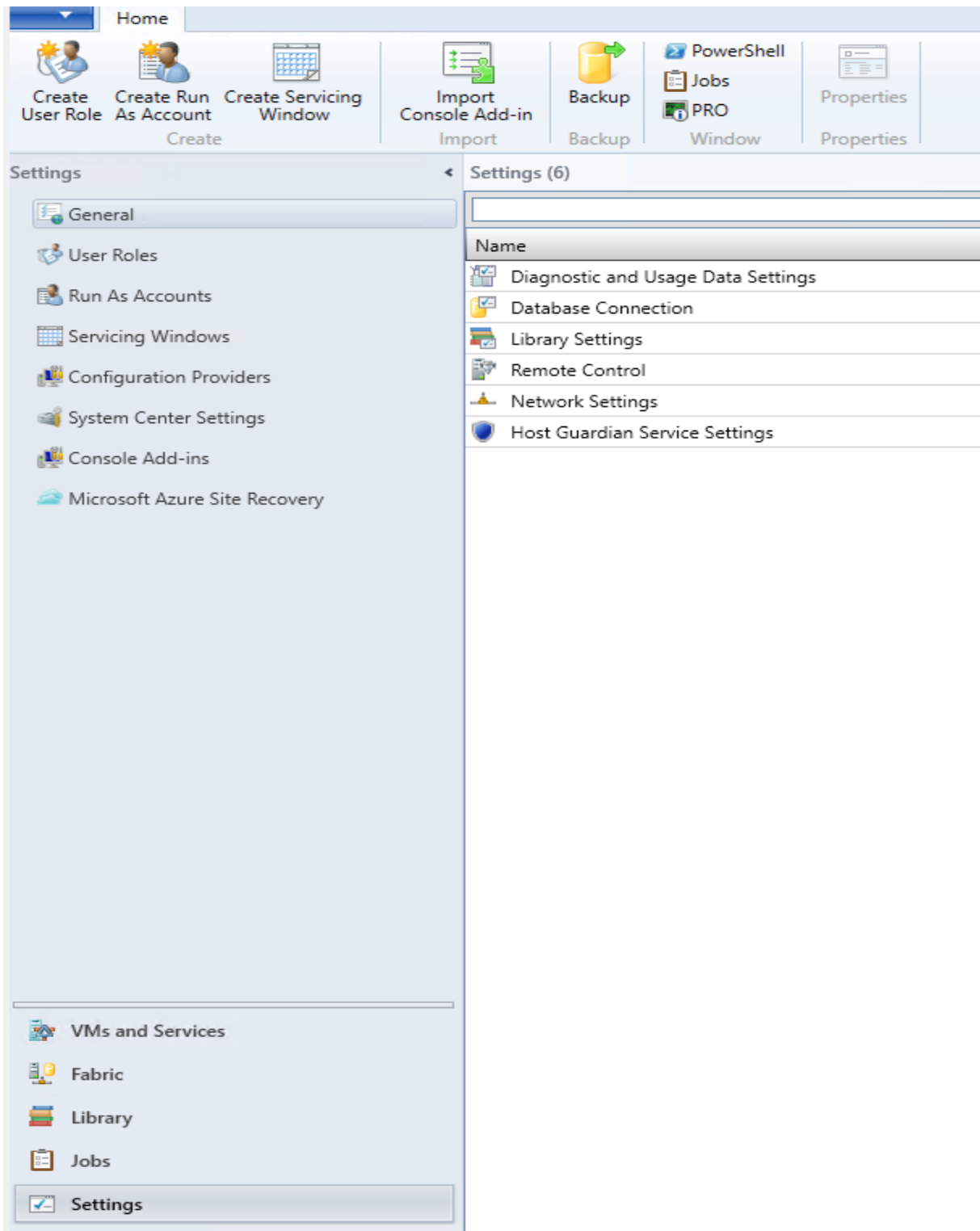
VMs and Services

Fabric

Library

Jobs

Settings



This concludes the installation of VMM 2019

Thanks

Ram Lan

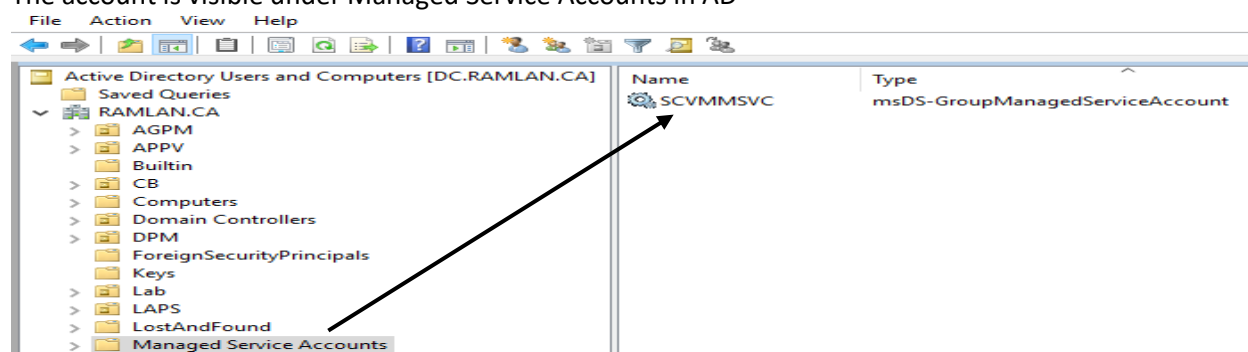
26th Dec 2019

GMSA – Group Managed Service Account: This account is created in AD on Domain Controller using PowerShell. There is no password set. You do have the option to set how frequent the password will be updated.

One of the newest features of GMSA is VMM Server will request the password from AD on a consistent basis and update SCVMMMSVC with the new Service Account password, all in the background, allowing you and your security team peace of mind that the Service account password is reset regularly and unknown to any humans.

One important note is when installing VMM 2019 make sure to add SCVMMMSVC account to Local Administrator Group – if not you will get pop up message to complete before you can proceed.

The account is visible under Managed Service Accounts in AD



<https://docs.microsoft.com/en-us/windows-server/security/group-managed-service-accounts/getting-started-with-group-managed-service-accounts>

Parameter	String	Example
Name	Name of the account	ITFarm1
DNSHostName	DNS host name of service	ITFarm1.contoso.com
KerberosEncryptionType	Any encryption types supported by the host servers	RC4, AES128, AES256
ManagedPasswordIntervalInDays	Password change interval in days (default is 30 days if not provided)	90
PrincipalsAllowedToRetrieveManagedPassword	The computer accounts of the member hosts or the security group that the member hosts are a member of	ITFarmHosts
SamAccountName	NetBIOS name for the service if not same as Name	ITFarm1
ServicePrincipalNames	Service Principal Names (SPNs) for the service	http/ITFarm1.contoso.com/contoso.com, http/ITFarm1.contoso.com/contoso, http/ITFarm1/contoso.com, http/ITFarm1/contoso

EXAMPLE: New-ADServiceAccount ITFarm1 -DNSHostName ITFarm1.contoso.com - PrincipalsAllowedToRetrieveManagedPassword ITFarmHosts\$ -KerberosEncryptionType RC4, AES128, AES256 -ServicePrincipalNames http/ITFarm1.contoso.com/contoso.com, http/ITFarm1.contoso.com/contoso, http/ITFarm1/contoso.com, http/ITFarm1/contoso